



APRIL 2016

Volts & Jolts

Published monthly for the members of Red Lake Electric Cooperative, Inc.

One of the Minnkota Power Systems

SERVING THE FOUR-COUNTY AREA OF MARSHALL, PENNINGTON, RED LAKE AND POLK
and a portion of the lands of the Red Lake Band of Chippewa

Three directors elected at Red Lake Electric's annual meeting

Colette Kujava, Newfolden, was re-elected at Red Lake Electric's annual meeting as the director for District 3; she begins her third, three-year term. This district includes the townships of West Valley, New Maine, Marsh Grove, Newfolden, New Solum and Viking, all in Marshall County. Kujava is also beginning her second year on the Minnkota Power Cooperative Board of Directors.

Kujava is originally from Harvey, N.D., where she was raised. For the past 16 years she has been employed at Wikstrom Telephone in Karlstad. Colette works in the Service Center, arranging customer service appointments and inquiries, dispatch, database updating and assignments. Colette is also the sales representative for the Wikstrom Telephone Directory, Wiktel website updates, advertising and promotions and "anything else that needs to be done."

Colette and her husband, Gordon, reside on their farm west of Newfolden in Marsh Grove Township, where they raise beef cattle, hogs and engage in grain farming. They are parents of two daughters – Teri of Thief River Falls, who works at Digi-Key, and Kelli of Fargo, N.D., where she works as a chef – and son Alex, who is (4326001.04 Shawn Bugge) currently enrolled at Northland CTC in East Grand Forks in the farm

operations program.

The Kujavas are members of Assumption Catholic Church of Florian, where Colette is cantor and plays organ. Through Wikstrom Telephone, Colette is also a member of the area Chamber of Commerce and other civic organizations.

"We've faced some tough challenges these past few years, and I am proud of how our Cooperative keeps our members informed while doing the best job possible of keeping our electric rates reasonable," stated Kujava. "We attend local and statewide informational meetings to better understand what our co-op is facing, and be as informed as we possibly can to help our RLEC management make the best possible decisions for you and be assured those decisions have all of you in mind. Thank you for your support."

Peter Mosbeck, Red Lake Falls, was re-elected to his third term as Red Lake Electric District 9 director. This district includes the townships of River Falls, Black River, Polk Centre, Sanders, Bray, Numedal and Norden, all in Pennington County.

Mosbeck has been a rural Red Lake Falls resident all of his life. He is involved in a family grain farm operation and works as



Colette Kujava



Peter Mosbeck



Randy Versdahl

an auctioneer.

Mosbeck and wife, Janette, reside on their farm in Polk Centre Township. They are the parents of two children – Dustin, who lives and works in Fargo, N.D., and Brittney, who is married to Tom Johnson. They reside in East Grand Forks with their sons Isaak Peter and Ty Thomas. Janette is employed by the Red Lake Falls Veterinary Clinic.

The Mosbecks are members of Black River Lutheran Church, rural Red Lake Falls, where Peter has served on the church board. He also serves as a supervisor on the Polk Centre Township board. He thoroughly enjoys spending time with his grandchildren and engaging in many outdoor activities.

"The electric industry continues to be faced with some real challenges and changes as we try to manage with governmental mandates and Environmental Protection Agency regulations that are passed onto us," stated Mosbeck.

"It is a continual challenge to keep reasonable retail electric rates, but I will do my best in making decisions regarding these issues as I represent the members of District 9. Thank you members for your continued support"

Randy Versdahl, Red Lake Falls, was re-elected to his second term as District 6 director at Red Lake Electric's annual meeting. District 6 includes the townships of Wylie, Louisville, Browns Creek, Red Lake Falls, River, Gervais, Terrebonne and Emardville, all in Red Lake County.

Versdahl is originally from Winger. He is a 39-year veteran of Garden Valley Telephone of Erskine. For the past 19 years he has served as facilities manager and



Chris Knott joins RLEC

Red Lake Electric recently hired Chris Knott of Red Lake Falls as an engineering technician. Chris is a Lafayette High School graduate, as well as a graduate from Minnesota State Community and Technical College. Knott holds a degree in construction electricity and is a licensed master electrician. In his spare time, he enjoys hunting and fishing and is involved in the Red Lake Falls Sportsman Club. Chris is the son of Mike and Karen Knott of Red Lake Falls.

continued on page 7



APRIL 2016 – Vol. 51, No. 7

OFFICIAL PUBLICATION OF

Red Lake Electric Cooperative, Inc.

P.O. Box 430 • 412 International Drive S.W.

Red Lake Falls, MN 56750-0430

(USPS 663-400)

Subscription rate: \$2.50 per year

Published 10 times a year, January through May, July and September through December, by the Red Lake Electric Cooperative, Inc., in the interest of its members and others. Periodical postage paid at the U.S. Post Office in Red Lake Falls, Minnesota 56750. POSTMASTER, SEND ADDRESS CHANGES to Volts & Jolts, c/o Red Lake Electric Cooperative, Inc., P.O. Box 430, Red Lake Falls, Minnesota 56750-0430. Email: redlake@minnkota.com.

OFFICERS AND DIRECTORS

President Bonnie Christians
Vice President Randy Versdahl
Secretary-Treasurer Mark Hanson
Directors Stacy Blawat, Aaron Chervestad,
Robert Finstad, Colette Kujava,
Steve Linder, Peter Mosbeck

Roger Johannek General Manager
Shirley Bregier Office Manager
Steve Conely Manager of Electric
System Operations
Kelli Brateng Manager of Member Services

OFFICE HOURS

Monday-Friday
8 a.m. – 4:30 p.m.

Phone: (218) 253-2168
Toll-Free: 1-800-245-6068
Fax: (218) 253-2630



AFTER HOURS/OUTAGE CALLS
1-218-253-2200

Website: www.redlakeelectric.com
Email: redlake@minnkota.com

CALL BEFORE YOU DIG
1-800-252-1166 or 811

MINNESOTA STATE ELECTRICAL INSPECTORS

Pennington and Marshall Counties:

Scott Stenvik – 218-689-5406

Red Lake and Polk Counties:

Bryan Holmes – 218-686-1413

Any time you or an electrician does wiring or other electrical work at your home or farm, Minnesota state requires a state wiring inspector to conduct a proper inspection of the work. A rough-in inspection must be made before any wiring is covered. A final inspection is also required. Please visit www.dli.mn.gov for more information. The inspectors can be reached weekday mornings between 7:00 a.m. and 8:30 a.m.

OUR MISSION STATEMENT

It is the mission of Red Lake Electric Cooperative to enhance the quality of life for people of our service area by safely and consistently providing quality electric service and other valued services while holding our employees, our community and our environment in high regard.



Manager's Comments

by Roger Johannek



Annual meeting

I want to thank the members and guests who attended the Cooperative's annual meeting on March 30. Our plan was to take care of the business we are required to do at our annual meeting yet keep the meeting short, informative and enjoyable. When we have a good crowd of people attending these Cooperative functions, it makes the work that we put into holding these meetings worthwhile. Based on what members told us so far, they appreciated the information presented at the meeting, the dinner prepared by St. Joseph's Church in Red Lake Falls, the golf-cart transportation from the parking lot to the arena, and fellowship shared among the meeting goers. Thanks again for coming!

Look up – look around!

With the annual meeting behind us, we expect that spring and all the fieldwork that comes with it to be close to follow. Hopefully, cutting corners is not part of your plan as you prepare for the work ahead. Certainly favorable weather goes a long way in easing the pace at which fieldwork is accomplished, but I remind you again to be cautious as you gear up for and plant your fields. Planting and harvest seasons are the time when accidents are more likely to happen; either people getting injured or property getting damaged. From 2007 to 2014, there has been an average of 17 contacts with Red Lake Electric's power lines, poles and equipment, mostly from agricultural equipment. In 2015, that number increased to 30 contacts with electrical equipment.

Be sure to take time for a tailgate session with those who will be helping you with your fieldwork and discuss where overhead power lines, power line poles, anchors, electrical equip-

ment such as pad transformers and other hazards are located. Just a few minutes can make a big difference for you, your family and co-workers.

As I have shared before, the Cooperative has about 40,000 power line poles and 18,000 anchors in place as part of the Cooperative's electric plant. Ground line transformers and junction boxes are also a part of the mix of equipment that pose as hazards when equipment is working the fields and moving about the farmyards. Please be mindful of this electrical equipment as you plan your work; a little extra care can go a long way toward saving time, damages and most importantly, injury.

Van Swanson completes two terms as Trust board director

At the Red Lake Electric Trust board meeting held in March, Van Swanson of Thief River Falls finished the second of two three-year terms as director of the Trust board; most recently serving as its secretary-treasurer. Because the Trust bylaws limit director terms to two consecutive three-year terms, Swanson's time serving the Red Lake Electric Trust as a director is completed and he will be replaced with a new director prior to the Trust's upcoming September meeting. It was a privilege serving with Van, who during his tenure served for a time on the Trust board as president and vice president. Van did a great job evaluating the Operation Round Up fund applications during his six-year tenure; his fairness to all the organizations seeking grants served the Trust board and the Cooperative members who participate in Operation Round Up well. Thanks again Van for accepting the invitation to serve on the Trust board; I sincerely appreciate it.



Line Service Department

by Steve Conely



Spring is here and we have many requests and inquiries for new electric services. With a very mild winter and little snowfall Red Lake Electric should be able to get most of this work done promptly. That is, if Mother Nature and our equipment cooperate.

If you are planning a construction project and will need power, please contact Red Lake Electric. Over the last few years we have seen an increase in the number of drain tile pumps and irrigation pivots on our system. In many situations the locations that the pump or pivot is installed is a substantial distance from an existing power source. Several times Red Lake Electric has been contacted about the cost to provide power to a certain site near its completion and RLEC was the bearer of bad news. There can be a significant cost (7336001.03 Jon Meyer) to the member to run power over long distances to a new electric load. If you are planning a project, please contact us during the planning stage so we can inform you on the cost to run power to it.

For those of you who are working the farms and fields, please let us know if you come across low power lines or see something unusual like a pulled guy wire, leaning or damaged poles. Also, if you have or plan to add a field crossing, please contact us. With the new larger equipment, we often have to put in taller poles to provide clearance when a new crossing is installed.

Watch out for poles, guy wires and look up for electric lines when unfolding equipment and moving augers. Last year we had about 30 incidents where a pole, guy wire or electric line was hit, or

made contact with some sort of equipment. Most of these incidents happen during spring work and at harvest time.

Please remember to call Gopher State One Call for digging projects this year. They can be reached by calling 811 or 1-800-252-1166. You can also access its website at www.gopherstateonecall.org. It has a lot of useful information and can answer many questions you may have. Until next time, stay safe and if you have any questions or concerns please contact us.



Cards of Thanks

The Red Lake County Sheriff's Office would like to express our sincere thanks for financially supporting our child safety and drug education program. We feel that it is our duty to provide the public with the protection and safeguards expected of us. Because of your generous support, we are able to provide a well-rounded child safety and drug education program for our children.

*Mitch Bernstein, Sheriff
Red Lake County Sheriff's Office*

The meeting at the Black River Church was great. Thank you for the wonderful door prizes and the pie was delicious, too!

*Tom & Kaylynn Wold
Thief River Falls*

Thank you for the very nice slow cooker I won at the District 9 meeting. We will make good use of it. Thanks also for the good informational meeting.

*Sharon Naplin
Thief River Falls*

I attended the Red Lake Electric District meeting in Plummer on Feb. 8 and it was fun and informative. I was pleased to win a very nice knife set as one of the door prize winners. Thank you so much. I really appreciate it.

*DeeAnn Leines
Red Lake Falls*

Thank you for the electric carving knife and ratchet tie-down set we won at the District 6 meeting held in Plummer on Feb. 8.

*Allen & Lois Remick
Red Lake Falls*

Recipe Corner



Submit your recipes to be published in *Volts & Jolts*. Email to redlake@minnkota.com or mail to: Red Lake Electric Cooperative, PO Box 430, Red Lake Falls, MN 56750.

Strawberry Shortcake Bars

2 cups crushed sugar cookies
(homemade or store bought), divided
½ cup white sugar
6 tablespoons melted butter
8 ounces cream cheese, softened
1 cup heavy cream
1 pound strawberries

Preheat oven to 325 degrees F. Grease a 9x13 pan with nonstick cooking spray. In a small bowl, mix ½ cups of crushed sugar cookies and butter until blended. Press into prepared pan. Bake for 30-35 minutes or until golden brown. Cool completely.

While the crust is cooling, wash, hull and slice strawberries. Combine heavy cream and sugar. Whip until stiff peaks form. Fold in cream cheese and strawberries. Spread on top of cooled crust. Top with remaining sugar cookies.

I would like to thank you all again for the scholarship I received. It is greatly appreciated and allowed me to continue my education. I'm currently going for zoology and I made the dean's list. Again, I can't thank the co-op enough! It was a blessing to receive these funds.

*Jenna Wiersma
Crookston*

RLEC Trust: Thank you for your generous donation made to the RLF Volunteer Ambulance Association. We are very grateful to be able to make the purchases and upgrades for our equipment that will help our community.

*Tandra Landman
Red Lake Falls Ambulance Treasurer*

Thank you for your contribution of \$500 for lighting at the Carnegie Library in Crookston. Your generous support will help us preserve and promote the history of Polk County – a place that means so much to so many.

*Gerald J. Amiot, President
Polk County Historical Society*

On behalf of Thief River Falls and Pennington County Safety Camp Committee, I would like to thank you for the continued financial support that you give to our safety camp. Your generosity will (3709015.01 Sjobergs Inc.) continue to be used toward safety education for 120 second and third graders in June of 2016.

*Melissa Sletten
Events/Recreation Coordinator*



Like us on Facebook at
www.facebook.com/redlakeelectric

78TH ANNUAL MEETING

“THE CHALLENGE OF CHANGE”

The 78th annual meeting of Red Lake Electric Cooperative was held March 30 in the Imperial Room of the Ralph Engelstad Arena in Thief River Falls. The meeting was attended by approximately 250 Cooperative members and guests.

President Bonnie Christians called the meeting to order at 10:30 a.m. In her President's report, Christians noted that the Cooperative had a good year in many areas of its operations in 2015. Christians noted that the Cooperative continues to have challenges but that the Cooperative has always faced challenges. Christians thanked the membership for their attendance today and then introduced a video titled, “Recognize, Respect & Report” on electric safety. It was a good reminder that it is not only good to look up for power lines, but to look around and know where equipment is

located so we can live, work and play safely with and around electricity and the equipment it takes to deliver it.

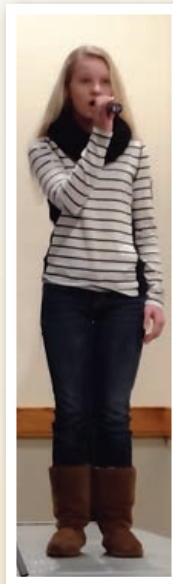
Roger Johanneck, general manager, gave a report on the Cooperative's activities during the past year and focused his comments on how Red Lake Electric is meeting on the “Challenge of Change,” specifically the challenge of keeping energy safe, reliable and affordable. Johanneck reviewed two major storms that occurred during the spring/summer of 2015, which required recovery help from neighboring cooperatives.

Today's challenges we face in our Cooperative also deal with changes in regulations of federal OSHA standards. Employees working with or near energized equipment must wear specialized clothing that is protective against arc flash.

Safety is also a concern for those working around

power poles and lines. Farming equipment has increased in size over the years, making clearance under these lines an issue. With larger equipment also comes a greater risk at hitting poles with this equipment. In 2015, Red Lake Electric had a total of 30 incidents of vehicles or equipment damaging power poles or coming in contact with a power line, which is an increase of 60 percent. Also, grain bins and buildings must be constructed an adequate distance from any existing power poles or lines to avoid any potential hazards.

Next, Shirley Bregier gave the 2015 financial report and said energy sales were down slightly from the previous year, largely as a result of a warmer winter to start and end the year. The Cooperative sold 126 million kWhs bringing revenues to \$13.7 million. Bregier said the Cooperative's margin was \$508,300; this is the amount that is allocated back to the members as capital credits. Bregier reviewed various operating expenses, fixed expenses and items on the balance sheet.



Karleen Wilde of Thief River Falls sang the national anthem at Red Lake Electric's annual meeting. Karleen is the daughter of Ryan and Sunny Wilde.



Members of Red Lake Electric listen to Shirley Bregier, office manager, give the 2015 financial report.

Guest speaker was Stacey Dahl, manager of external affairs for Minnkota Power Cooperative in Grand Forks, N.D. Stacey's presentation to the meeting attendees was regarding the EPA's final carbon regulations and Clean Power Plan and the changes it will bring to our region.

Colette Kujava, Randy Versdahl and Peter Mosbeck were elected at the annual meeting. They will each serve three-year terms.

Each year employees are recognized when surpassing five-year increments of accident-free work. Safety awards (4519005.03 David H. Christianson) were presented to Roger Johanneck, 35 years; the Cooperative has gone 7½ years without a lost-time accident.

Red Lake Electric is headquartered in Red Lake Falls, Minn., and as a distribution electric cooperative serves rural members of Marshall, Pennington, Red Lake, Polk, Clearwater and Beltrami counties.



Door prize winners
(clockwise) – Gordy Henrickson of Goodridge was the winner of a Skil Jigsaw. Karen Peterson of Trail won an LED work light. The winner of the handcrafted bowl was Sue Dupree, Thief River Falls. Dennis Hjelle, Newfolden, won a Stanley coffee thermos.



Tishara Melcher, vice president of the Red Lake Electric Trust board, presents a \$750 grant check to Jane Anderson of the Thief River Falls Area Community Theater.



Golf cart transportation was available before and after the meeting by Red Lake Electric linemen (left to right) Aaron Derosier, Troy Schmitz and Casey Thronson.



A delicious pork loin meal was prepared by members of St. Joseph's Church, Red Lake Falls.

QUICK TAKES

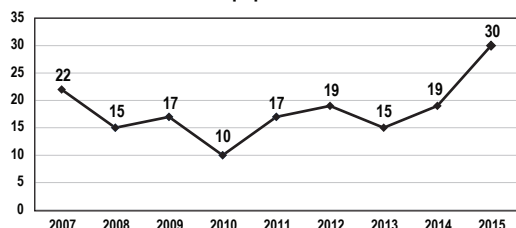
A look at some statistics
from your Red Lake Electric Cooperative

In hopes that something can be learned from knowing the mistakes of others, here are some examples of how accidents occur in Red Lake Electric's service area:

- Combine auger hitting power line
- Backhoe digging into buried cable
- Vehicle backing into pole
- Tractor hitting and breaking pole
- Tree falling onto power line while cutting
- Cultivator snagging a guy wire
- Crop sprayer hitting power line
- Wind blowing ladder into secondaries

Please think safety this spring as you get ready for planting crops.

Vehicle & Equipment Contacts



NOTICE OF NAMES

Hidden within the text of the articles of this issue of the *Volts & Jolts* are the names and account numbers of some Red Lake Electric Cooperative members. They will appear within the articles in parenthesis as such (9999999.99 Willie Ray Member). If you find your name and account number, clip it out and send it with you next payment. You will be credited with \$5 on your electric bill.

Red Lake Electric Cooperative, Inc. OPERATING REPORT

MONTHLY COMPARISON

	February 2015	February 2016
Total revenue	\$1,483,596	\$1,287,589
Total margins	\$ 192,412	\$ 59,727
Cost of power	\$1,041,303	\$ 959,050
kWhs purchased	15,836,515	13,082,311
Capital credits paid to estates	0	0
Average outage time in minutes per member	0.5	5.4

YEAR-TO-DATE COMPARISON

	February 2015	February 2016
Total revenue	\$3,037,423	\$2,830,119
Total margins	\$ 375,255	\$ 215,478
Cost of power	\$2,109,668	\$2,038,454
kWhs purchased	32,380,718	29,275,659
New service connections	1	2
Customers served	5,319	5,368
Capital credits paid to estates	\$6,878	\$13,591
Average outage time in minutes per member	1.5	7.6
Miles of line – Overhead	2,327	2,317
Miles of line – Underground	270	279

Power Plant Tour

Wednesday-Thursday
June 29-30, 2016

Red Lake Electric Cooperative and Clearwater-Polk Electric Cooperative plan to co-sponsor a tour of the Milton R. Young power plant June 29-30.

The first day of the trip will include a stop at Minnkota Power Cooperative's headquarters in Grand Forks. An afternoon stop will be taken at Garrison Dam and a relaxing evening will be spent at the Baymont Inn & Suites in Mandan, N.D., which will include a banquet sponsored by Minnkota Power Cooperative.

The second day of the tour includes visiting the Milton R. Young generation station near Center, N.D. It will also include a drive through the open pit lignite mines (weather permitting) to see the mining operation first hand. You are guaranteed to have a better understanding (6309001.10 Jeremiah Johnson) of the process involved with generating the electricity that serves you.

The cost to participate in the tour is \$80 per person double occupancy, \$100 single occupancy. This includes transportation, meals and lodging. The tour is open to all Red Lake Electric Cooperative members and/or spouses.

The tour group will depart from Red Lake Electric Cooperative's headquarters in Red Lake Falls at 7 a.m. Wednesday, June 29. Approximate time of return is 7 p.m. Thursday, June 30.

Registrations and payment are due by June 15. If you have not taken this tour, sign up today for a learning experience.



BNI Coal mine

Power Plant Tour Registration June 29 and 30, 2016

Sign up deadline is June 15, 2016

NAME OF PARTICIPANTS

ADDRESS(ES)

Phone Number _____ Number of Participants _____

Account No. _____ Amount Enclosed _____

\$80 Per Participant Double Occupancy – \$100 Per Participant Single Occupancy

Return to RLEC, P.O. Box 430, Red Lake Falls, MN 56750, along with your check. RLEC will contact you later with details. Your check or deposit will be returned if the tour should be canceled for some reason. If it becomes necessary for you to cancel out on the trip, it is required that you notify RLEC at least 48 hours before departure to be eligible for a refund. Registration for the trip is on a first-come, first-serve basis with a limited number of openings. If you have previously taken the trip, you will be put on a space availability standby.

Call 48 hours before digging



Know what's below.
Call before you dig.

Whether you plan to dig posts for a deck or plant a tree or trench in electric lines for an outbuilding, it is important to understand and utilize Gopher State One Call (GSOC). That call needs to be made at least 48 hours (excluding weekends and holidays) before you plan to dig. If a homeowner hires a contractor to do the work, by law the contractor must obtain the ticket that allows digging to proceed.

When you contact GSOC, you may call 811 or 1-800-252-1166. You may also visit www.gopherstateonecall.org to submit your ticket application online. Be prepared with the following information: name, home phone and work/cell phone numbers, when work will begin, how many days digging will take, type of work you will be doing, county and city/township where work (5321008.09 David M. Hoodie) will be done, address and nearest cross streets or township range/section where work will be done, where you will be digging on the property (also mark the area with white paint) and whether any digging will be done in the road right of way.

Three directors elected *continued from page 1*

safety director. Through his association with Garden Valley Telephone he has been an active safety committee member of Minnesota Telecom Alliance (MTA), serving the past seven years as vice chair. Versdahl has also served as president of the MTA plant manager group.

Versdahl has been a resident of Gervais Township for 35 years. He is a parent of two daughters – Kari, who is married to Danny Gagner, and Erica, who is married to Alan Sundby, all residing in the Grand Forks, N.D., area. Versdahl has four grandchildren – Drew and Cole Gagner and Natalie and Claire Sundby.

Other involvements for Randy include being a member of Bethany Lutheran Church and the Pathfinders Snowmobile Club, both of Red Lake Falls.

“Legislative and regulatory mandates such as renewable energy, which includes wind and solar, energy conservation directives and clean coal technology have a huge impact on electric cooperatives in the area and across the country,” said Versdahl. “These issues are cause for much concern into the future, but I look forward to continuing to serve the members of the Cooperative and representing those of the Red Lake Falls and Plummer area for another three years.”

Since most private facilities are not listed on GSOC, it is the homeowner's responsibility to hire someone to locate their private underground facilities.

What are private electric underground facilities?

Private underground facilities, or member-owned facilities, are those facilities that were installed behind or after the meter. Whether you have overhead or underground distribution lines coming into your property, the underground wires installed from your electric meter to your house, shop, garage, etc., belong to the member/property owner.

Where are private facilities found?

Private facilities are found everywhere, including single-family homes, multifamily housing units, industrial areas, trailer parks, shopping centers and sometimes in the road right of way. Other private facilities can include natural gas

farm taps, natural gas or propane gas underground piping to buildings, data communication lines, underground sprinkler systems, invisible fences and many others. If you have a question on whether a facility in your excavation area is considered private, please contact that local utility office.

Whose responsibility is it to locate private facilities?

When a property owner or tenant has any type of private underground facility, they are responsible to locate those facilities, or hire someone to locate them. If you need help finding electrical contractors in your area, please call 1-800-245-6068.

Never remove flags before work is completed as they are there to mark lines for the safety of all digging in the area.

If you come in contact with an underground utility, evacuate the area, notify your utility provider and do not attempt to fix the problem yourself.

CLASSIFIEDS

Members are invited to use
this FREE WANT AD service.

If you have anything to trade or sell, just drop a card to
Red Lake Electric Cooperative, Red Lake Falls, MN 56750.

For Sale

2014 7' x 14' V-front enclosed trailer. Ramp door with side door. D rings in floor. Tandem axle with brakes. Only 300 miles on trailer. \$4,750. New condition. Call Mike, 218-684-5306.

2005 Keystone Hornet camper. Queen bed in the front, bunk bed in the back (twin over full). One slide out, lots of storage, non-smoking. \$9,500. Call or text: 218-686-7328 or 218-686-4091.

Open for Business

The new Cedar Mill – garden center and natural market in Thief River Falls. Annuals, perennials, shrubs and trees for sale. Organic heirloom garden plants, seeds and vegetables year-round. Pumpkin patch, hay rides, barrel trains and fun games this fall. Highway 59 S., Thief River Falls. Opens April 30. Dan Benoit, 218-684-5135.

Want Ad Order Form

FREE for RLEC members

For sale and wanted items only. All ads must be 50 words or less. Ads are published for Red Lake Electric members at no charge. Ads must be typed or in clear readable print. RLEC reserves the right to edit or reject any ad.

You can submit your ad by fax, email or mail. Fax ads to: (218) 253-2630; Email ads to: redlake@minnkota.com; Mail ads to: Red Lake Electric Cooperative, PO Box 430, Red Lake Falls, MN 56750.

Include your name, address and telephone number. All telephone numbers are presumed to have a 218 area code unless noted otherwise.

Use the form below to submit your ads.



**Red Lake Electric
Cooperative Inc.**

New electric water heater rebates available!

Enjoy reliable hot water and save money at the same time with help from Red Lake Electric Cooperative's electric water heater rebate program.

Water heating is one of the largest energy expenses in most households, which makes it a smart area to improve efficiency. New electric water heaters are among the most efficient, dependable and durable products on the market today. And with great new incentives from Red Lake Electric, it has never been more affordable to upgrade.

All rebate-qualifying water heaters must be on the off-peak program, which allows your water heater to draw electricity during times of low energy demand, such as late at night, when it's less expensive. The water heater is temporarily turned off during high energy demand periods, helping you save money on your monthly bill. Participants in the off-peak program receive a lower monthly rate for the electricity their water heater uses.

Electric Water Heaters (must be on off-peak)	Incentive Per Unit
55 gallon or less	\$100
56-99 gallon	\$150
100 gallon or greater	\$200
Additional rebate for new building construction	\$100
Additional rebate for conversion from existing natural gas or propane	\$250
Additional PowerSavers rebate for 80-gallon or greater (with Energy Factor (EF) equal to or greater than 0.91)	\$150

Rebate requirements:

- Must be a new purchased electric water heater installed on Red Lake Electric's system.
- Must be on off-peak/load control.
- Must be at least 240 volts and hard-wired.
- Tankless water heaters do not qualify for rebate.
- Hybrid heat pump water heaters do not qualify for rebate.
- Multifamily dwellings do not qualify for rebate; however, exceptions will be considered on a case-by-case basis.
- Rebate limit of \$500 per member/customer account.
- Maximum \$300 rebate for the coupling of two water heaters in parallel or series.
- Other restrictions may apply.



Please contact Red Lake Electric Cooperative today to find out more about the water heater rebate program or the many other great programs available to you!