



Volts & Jolts

Published monthly for the members of Red Lake Electric Cooperative, Inc.

One of the Minnkota Power Systems

SERVING THE FOUR-COUNTY AREA OF MARSHALL, PENNINGTON, RED LAKE AND POLK
and a portion of the lands of the Red Lake Band of Chippewa

FEBRUARY 2016

District meetings held

Three district meetings were held within Red Lake Electric Cooperative's (RLEC) service area in early February. Topics reviewed at the meetings included 2015 in review, LED security lighting, efficiency rebate incentives, Steffes heaters and bill pay options.

In his manager's report, Roger Johanneck discussed current year activities, citing a number of different accomplishments by the Cooperative in 2015. Johanneck pointed out that Minnkota's wholesale power cost increase of 5 percent in 2015 and 3.3 percent increase in April 2016 necessitated RLEC to implement a rate increase starting March 1, 2016.

Shirley Bregier, office manager, reviewed the choice members have of paying their electric bill, which included the Bill4U online payment feature. Besides the option to pay online, members also have the ability to check their daily usage by using Bill4U.

In her member services report, Kelli Brateng shared the many options available for rebate incentives, as well as information about Steffes room unit heaters. Brateng also informed members on the ability to receive text or email notifications during load control periods.

The District 3 meeting was held Feb. 1 at Newfolden Community Center. Cooperative members in attendance (2613002.06 Kandy Efta) unanimously elected Colette Kujava, incumbent director, as the director candidate from the district.

The District 9 meeting was held the evening of Feb. 1 at Black River Lutheran Church. Incumbent director Peter Mosbeck was unanimously elected as the director candidate of the district.

The District 6 meeting was held Feb. 8 at the Plummer Hall. Incumbent director Randy Versdahl, Red Lake Falls, was unanimously elected as the director candidate of the district.

A total of 78 members and friends attended the three meetings. Door prizes were awarded and lunch was served.

Official Notice of Annual Meeting

All members of Red Lake Electric Cooperative, Inc., are hereby notified of its annual meeting. The annual meeting will take place at 10:30 a.m. Wednesday, March 30, 2016, at the Ralph Engelstad Arena in Thief River Falls.

The meeting agenda includes year 2015 in review, financial reports and election of directors. Door prizes will be awarded and a sit-down meal will be served.

All members are encouraged to attend.

/s/ Mark Hanson, Secretary



The District 3 meeting was held Feb. 1 at the Newfolden Community Center. Door prize winners were (from left to right) Arnold Skjerven, Newfolden, crock pot; Janice Olson, Newfolden, clock radio; and Roger Schmitz, Newfolden, set of tie-down straps.



Pictured are some of the door prize winners at the District 9 meeting held Feb. 1 at Black River Lutheran Church. (From left to right) Lyle Swanson, Thief River Falls, tie-down straps; Greg Hallstrom, Red Lake Falls, screwdriver set; Arlene Novak, St. Hilaire, extension cord; and Gary Novak, St. Hilaire, kitchen knife set.



The District 6 meeting was held Feb. 8 at the Plummer Hall. Door prize winners included (from left) Clayton Larson, Plummer, clock radio; Lois Remick, Red Lake Falls, tie-down straps; and Allen Remick, Red Lake Falls, electric knife.

Walter Novak (left), Brooks, was the winner of a crock pot and Adam Reese, Brooks, won an extension cord while attending the District 6 meeting in Plummer.





Published 10 times a year, January through May, July and September through December, by the Red Lake Electric Cooperative, Inc., in the interest of its members and others. Periodical postage paid at the U.S. Post Office in Red Lake Falls, Minnesota 56750. POSTMASTER, SEND ADDRESS CHANGES to Volts & Jolts, c/o Red Lake Electric Cooperative, Inc., P.O. Box 430, Red Lake Falls, Minnesota 56750-0430. Email: redlake@minnkota.com.

OFFICERS AND DIRECTORS

President Bonnie Christians
Vice President Randy Versdahl
Secretary-Treasurer Mark Hanson
Directors Stacy Blawat, Aaron Chervestad,
Robert Finstad, Colette Kujava,
Steve Linder, Peter Mosbeck

Roger Johanneck General Manager
Shirley Bregier Office Manager
Steve Conely Manager of Electric
System Operations
Kelli Brateng Manager of Member Services

OFFICE HOURS

Monday-Friday
8 a.m. – 4:30 p.m.

Phone: (218) 253-2168
Toll-Free: 1-800-245-6068
Fax: (218) 253-2630



AFTER HOURS/OUTAGE CALLS 1-218-253-2200

Website: www.redlakeelectric.com
Email: redlake@minnkota.com

CALL BEFORE YOU DIG
1-800-252-1166 or 811

MINNESOTA STATE ELECTRICAL INSPECTORS

Pennington and Marshall Counties:
Scott Stenvik – 218-689-5406

Red Lake and Polk Counties:
Bryan Holmes – 218-686-1413

Any time you or an electrician does wiring or other electrical work at your home or farm, Minnesota state requires a state wiring inspector to conduct a proper inspection of the work. A rough-in inspection must be made before any wiring is covered. A final inspection is also required. Please visit www.dli.mn.gov for more information. The inspectors can be reached weekday mornings between 7:00 a.m. and 8:30 a.m.

OUR MISSION STATEMENT

It is the mission of Red Lake Electric Cooperative to enhance the quality of life for people of our service area by safely and consistently providing quality electric service and other valued services while holding our employees, our community and our environment in high regard.



Manager's Comments

by Roger Johanneck



Area high school scholarships

About this time each year, Red Lake Electric Cooperative (RLEC) mails out letters to area high school scholarship supervisors notifying them of Red Lake Electric's scholarship program available to graduating seniors.

Since 1990, RLEC has awarded 258 scholarships totaling more than \$118,000. The majority (roughly 85 cents out of each scholarship dollar) of these scholarships awarded are funded from unclaimed capital credits. If after seven years capital credit checks mailed out by RLEC to past members are not cashed, the state of Minnesota allows RLEC to donate this money. Prior to this option allowed by the state, unclaimed monies were sent back to the state of Minnesota. When that requirement changed, your cooperative decided to donate these monies as scholarships.

The amount of scholarships awarded originally was \$200; today they are \$500 each. RLEC donates scholarships to 12 area high schools. However, most years there are fewer than 12 RLEC scholarships awarded (4415027.01 Kim Englestad) because not all schools have a graduating senior who qualifies as a RLEC member dependent.

A few years back, our practice of awarding one scholarship to each high school changed for Lincoln High School in Thief River Falls because of the proportional share of members who reside in the Thief River Falls school district. It is not a perfect world, but we think this is a more fair allocation of the scholarship funds available to RLEC.

I have also been asked about awarding scholarships to home-schooled graduates. Since recipients are chosen by the high school selection committees and not Red Lake Electric, home-schooled seniors must apply to their area high school. RLEC simply does not have the process in place to make scholarship decisions like our area high schools do.

I realize that a \$500 scholarship is a small piece of the pie when you add up all the college tuition costs today, but as the saying goes: it beats getting poked in the eye with a sharp stick. If you have a senior planning to further their education, encourage them to apply at their school for the Red Lake Electric scholarship.

VOTING DELEGATE CERTIFICATION

Members that are corporations, churches, townships, schools or other government units may vote at the annual meeting. This form must be filled out, signed by officers and presented at the annual meeting registration desk or returned with a mail ballot.

The _____ has, at an official
Name of Member

meeting, designated _____

Name of Delegate

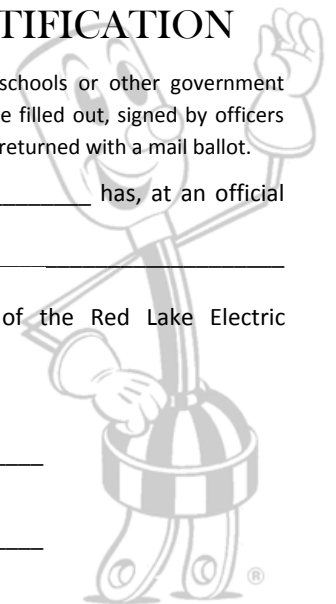
to represent us at the 2016 annual meeting of the Red Lake Electric
Cooperative, Inc.

Attest _____

Chairman or President

Attest _____

Clerk or Secretary





Report from the Office

by Shirley Bregier



At the January board meeting, your Red Lake Electric board of directors once again approved the payment of capital credits. For current members, your portion of this payment will appear on the electric bill you receive in March.

So, what are capital credits? Capital credits reflect a member's ownership in the Cooperative. Simply put, capital credits are the amount of revenue left over at the end of the business year once all operating expenses have been paid. At the end of 2015, the Cooperative had margins (revenue minus expenses) of \$508,318. Since we are a not-for-profit cooperative, this amount will be divided between the 4,500 RLEC members based on how much each member paid for their electricity in 2015. This assignment of capital credits will remain in each member's account to be used by the Cooperative to build new or rebuild aging infrastructure, improve capacity and operate the Cooperative.

Your Cooperative has an equity plan in place, which guides the board in the annual evaluation of retiring capital credits to the membership. When a payout is approved by the board of directors, the oldest capital credits are paid back first. RLEC retires credits on a rotation of approximately 20 years, which helps the co-op maintain an ideal equity level. This year's payout of capital credits will be the balance of capital credits assigned to members in 1997 and 1998 for a total of about \$477,000. If you have moved and no longer receive an electric bill from RLEC, you will receive a check mid-March.

Like always, if you have a question or concern, please call our office at 800-245-6068 or email us at redlake@minnkota.com. Watch (6710004.02 Richard Martell) for your capital credit payment, and I hope to see you at the annual meeting March 30.

Director nominations, petitions due Feb. 29

Each year the terms of three of Red Lake Electric Cooperative's (RLEC) directors expire the day of the annual meeting. Members of each of the three districts whose present director's terms will expire March 30 have elected director candidates at the recently held district meetings. The names of the candidates are Colette Kujava, Newfolden, District 3; Randy Versdahl, Red Lake Falls, District 6; and Peter Mosbeck, Red Lake Falls, District 9.

Their names will be placed in the nomination at the annual meeting. Any other member within these districts wishing to have their name placed in nomination must do so by petition. The petition is due in the RLEC office in Red Lake Falls by 10 a.m. Feb. 29.

At least 15 members of the district must sign the petition for the director nominee. The nominee's name will then be placed on the election ballot at the annual meeting March 30 at the Ralph Engelstad Arena in Thief River Falls.

Petition forms are available at the RLEC office in Red Lake Falls. Contact Roger Johanneck, Cooperative manager, at 800-245-6068 or 253-2168 for more information.

Director qualification requirements

No member shall be eligible to become or remain a director who:

- Is not a member of the Cooperative, receiving electric service at the member's primary residence in the district from which the director is elected.
- Within three years preceding a director candidate's nomination was an employee of the Cooperative.
- Is or becomes, or at any time during the three (3) years preceding a director candidate's nomination shall have been employed by a labor union, which represents or has represented, or has endeavored to represent any employees of the Cooperative.
- Is a parent, spouse or cohabitant of any employee of the Cooperative.
- Is a person who is a parent, spouse or cohabitant of an incumbent director who is not up for re-election at that time.
- Is in any way employed by or substantially financially interested in an enterprise competing with the Cooperative or any Cooperative-affiliated business.
- Is or becomes the full-time employee or agent of, or who is or becomes the full-time employer or principal of, another director.



Submit your recipes to be published in *Volts & Jolts*. Email to redlake@minnkota.com or mail to: Red Lake Electric Cooperative, PO Box 430, Red Lake Falls, MN 56750.

Slow Cooker Vegetable Beef Soup

1 – 1½ lbs. stew meat cut into bite-size pieces
4 cups diced red potatoes
24 oz. thawed frozen mixed vegetables
15 oz. diced tomatoes, undrained
15 oz. Great Northern beans drained
1 large onion, diced
32 oz. beef broth
1½ tsp. seasoned salt
1 tsp. minced garlic
2 bay leaves
1 T. vegetable oil

Season cubed beef with seasoned salt and pepper. In a large skillet, heat oil over medium heat. Brown beef in skillet on all sides. Transfer beef to slow cooker. Add remaining ingredients, stir and cover. Cook on low for 8-10 hours or on high for 4-5 hours. Remove bay leaves and serve.



Cards of Thanks

Thank you very much for the funds from the Operation Round-up program. We hosted six Giving Trees, which provided Christmas gifts to 137 children and group home residents. The Operation Round-up program funds are an important part of the Giving Tree project, to make sure we meet the needs of low-income children during the holidays and to make sure no child is forgotten. Thank you!

Kathy Johanneck
RLC Salvation Army Coordinator

You have helped carry out Violence Intervention Project's mission with your financial contribution received in October. The funds were applied toward our parenting time center, Umbrella Tree. This past year we served over 500 individuals, children and women and men, with our victim advocacy, shelter, house, and parenting time center programs.

We sincerely thank Operation Round-up for the support (4402027.34 Roxane M. Gilbertson) as we do this very challenging work.

Sincerely,
Sandra Bently, Executive Director

The Marshall County Board of Commissioners and Marshall County Social Services wish to extend their deep appreciation for your donation this Christmas Season!

Thank you to all of you for donating to the Christmas projects; because of your generosity food baskets were delivered to 181 people and 220 children received gifts from the Sharing Tree project. Your willingness of giving and caring are much appreciated.

Sincerely,
Stacey Urbaniak, Case Aide
Marshall County Social Services

Overhead power line maintenance

RLEC has 2,596 miles of power lines throughout its service territory. The majority (2,317 miles) of this vital link delivering power to the membership consists of overhead power lines; about 10 percent or 279 miles consists of underground distribution lines. The old adage, “a stitch in time, saves nine” applies to the preventative maintenance program RLEC has in place to be a reliable source of power for its members. When construction activity slows in winter, RLEC crews concentrate on maintenance to the electric system. This winter, RLEC crews have been making the most of the mild winter and low snow cover to work on (7721003.09 Shirley Daigre) clearing brush and trees from the overhead power lines, along with electrical equipment maintenance.

Crew foreman Troy Schmitz and journeyman lineman Jordon Gervais were in the Viking area recently,

where they were using a “brush-hog” rotary brushing attachment powered by a Bobcat skid steer. The use of this machine mounted equipment has made cutting, grinding and clearing vegetation a more efficient means for clearing brush and trees in the power line right of way. “Much of the clearing that used to be done with a chain saw we can now do with the brush-hog attachment,” commented Schmitz. “We are able to accomplish much more in a day’s time with this equipment.”

Northwest of Red Lake Falls, crew foreman Casey Thronson, along with journeymen linemen Darcy Cardinal, Aaron Derosier and Sam Pahlen, performed maintenance on voltage regulators. Every six miles, as the distribution line extends from the substation, voltage regulators are installed to help balance the voltage on a fluctuating demand for energy.

HYDRO-AXING



Journeyman lineman Jordon Gervais uses a “brush-hog” rotary brushing attachment powered by the Bobcat to clear vegetation in the power line right of way.



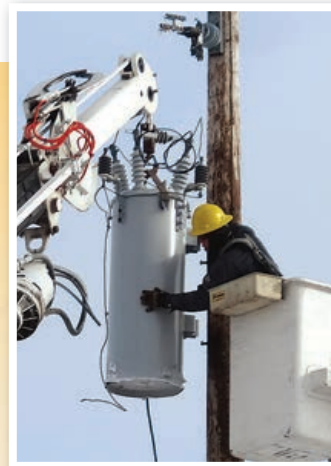
A before and after picture of some small brush that was hydro-axed using the Bobcat and brush-hog attachment.

REGULATOR REPLACEMENT

Journeymen linemen Aaron Derosier operates the winch; Darcy Cardinal, in bucket, removes the old regulator; Sam Pahlen prepares the new regulator on the ground; and crew foreman Casey Thronson removes the existing regulator panel. They all have their responsibilities to make a quick and safe changeout of a regulator.



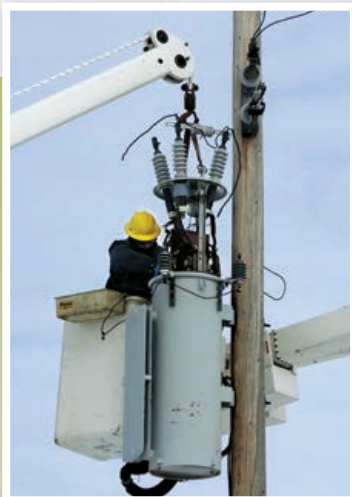
Journeyman lineman Darcy Cardinal uses a hot stick to take the regulator out of service to replace a faulted capacitor.



Cardinal, with help from Derosier operating the winch, removes the old regulator from the pole and lowers it to the ground. Derosier holds the new regulator in place with the winch while Cardinal lines the regulator up into position before he fastens it to the pole.



Crew foreman Thronson attaches the new regulator panel to the pole. The panels and regulators are inspected and maintained on a yearly basis.



Cardinal replaces the capacitor on the inside of the regulator and connects the regulator back to the distribution power line.



Thronson programs the regulator panel to maintain the voltage on the overhead power line.

CAPACITOR REPLACEMENT



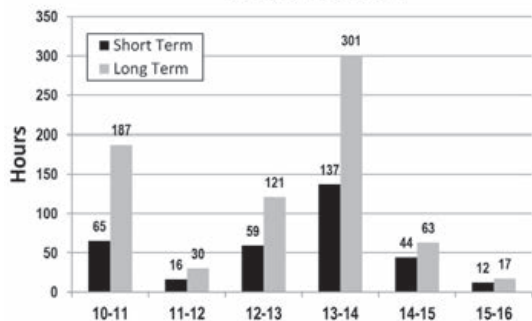
Journeyman lineman Aaron Derosier (operating winch) places the regulator back in the "tub" with hand gesture guidance from journeyman lineman Darcy Cardinal.

QUICK TAKES

A look at some statistics
from your Red Lake Electric Cooperative

The chart below shows the amount of control time for Red Lake Electric Cooperative's off-peak customers this heating season compared to the same period the past five years. Energy sales, service interruptions and off-peak control hours are all good examples and reminders of how your Red Lake Electric Cooperative business is impacted by the weather.

Off-Peak Control Hours
through February 7



NOTICE OF NAMES

Hidden within the text of the articles of this issue of the *Volts & Jolts* are the names and account numbers of some Red Lake Electric Cooperative members. They will appear within the articles in parenthesis as such (9999999.99 Willie Ray Member). If you find your name and account number, clip it out and send it with you next payment. You will be credited with \$5 on your electric bill.

Red Lake Electric Cooperative, Inc. OPERATING REPORT

MONTHLY COMPARISON

	December 2014	December 2015
Total revenue	\$1,166,392	\$1,354,680
Total margins	(\$191,929)	\$89,722
Cost of power	\$1,027,263	\$999,533
KWhs purchased	15,591,845	14,399,355
Capital credits paid to estates	\$2,116	\$6,789
Average outage time in minutes per member	0.2	3.1

YEAR-TO-DATE COMPARISON

	December 2014	December 2015
Total revenue	\$14,325,987	\$13,727,286
Total margins	\$825,752	\$508,318
Cost of power	\$10,470,890	\$10,172,225
kWhs purchased	146,387,508	133,336,721
New service connections	71	47
Customers served	5,321	5,369
Capital credits paid to estates	\$64,194	\$72,289
Average outage time in minutes per member	175	233.0
Miles of line – Overhead	2,327	2,317
Miles of line – Underground	270	279

Lignite education seminar accepting registrations



Registration is now open for the Lignite Energy Council's 31st annual teacher education seminar: *Energy, Economics and Environment*. The four-day seminar gives elementary, middle and high school teachers a first-hand look at North Dakota's fifth largest industry, lignite mining and (3803013.02 Dan and Mary Thorstad) related energy production. The seminar will be held June 13-16, 2016, at Bismarck State College's National Energy Center of Excellence, Bismarck, N.D.

"Teachers from all grade and subject levels should apply before April 15, 2016, but the earlier the better as the seminar does fill up fast," said Kay LaCoe, Lignite Energy Council communications and education coordinator. "One of the biggest draws of our seminar is that it offers two graduate credits paid for by the Lignite Energy Council, not to mention the popular tours of lignite facilities such as the Center Mine and the Milton R. Young Station power plant."

Two Professional Development Graduate credits in economics will be available through University of North Dakota, science through Minot State University, or education through North Dakota State University. To receive the credits, teachers must attend all portions of the seminar and prepare a lesson plan demonstrating how they could use the seminar information and materials in their classroom.

The seminar provides instruction on these topics and more: history, geology, land reclamation, environmental protection, economics of the lignite industry, the need for more workers, energy conservation and transmission. Besides the classroom instruction and the tours, teachers attending the seminar will receive electronic copies of each presentation, examples of lesson plans, classroom exercises, coal and ash samples, audiovisual materials and information on the facilities they tour, all for use in the classroom. More information and the application for all teachers are available at <http://www.lignite.com/teachers>.

Engineering Technician

Red Lake Electric Cooperative is seeking applicants for the position of Engineering Technician. A two-year technical degree (such as surveying, drafting, electricity, electronics or architecture) is preferred. Applicant must have working knowledge of computer software, including Auto-Cad, MS Excel and MS Word. Applicant must have a valid driver's license. Work experience is desirable. Applicants should have a basic knowledge of electricity. The successful applicant will have varied engineering responsibilities, which will require work both in an office setting and outdoors. Send resume and at least three professional references to: Steve Conely, manager of electric system operations, Red Lake Electric Cooperative, Inc., PO Box 430, Red Lake Falls, MN 56750 or email to sconely@minnkota.com. Applications will be accepted until this position is filled.

Red Lake Electric Cooperative is an Equal Opportunity Employer

ELECTRIC HEAT EXEMPTION

This is to certify that the primary source of heat for my residence is electricity and I am eligible for the electric heating sales tax exemption as provided by Minnesota State Law. The primary source supplies more heat than any other source for the largest period of time during the heating season.

Date _____ Account Number _____

Social Security Number _____

Signature _____

FEDERAL/STATE ENERGY ASSISTANCE

If you need help paying your electric utility bill, you may qualify for state or federal fuel assistance. For complete, qualification and application information, contact your local county welfare or community/citizen's action council listed below. These organizations may also provide budget counseling.

Inter-County Community Council

Oklee, MN
*Serves East Polk, Pennington
and Red Lake Counties*
218-796-5144
Toll-free: 1-888-778-4008
Fax: 218-796-5175

Northwest Community Action

Badger, MN
Serves East Marshall County
218-528-3258
Toll-free: 1-800-568-5329
Fax: 218-528-3259

Tri-Valley Opportunity Council

Crookston, MN
Serves West Polk, West Marshall County
218-281-9080
Toll-free: 1-866-264-3729
Fax: 218-281-0705

Red Lake Community Action Agency

Red Lake, MN
Serves Beltrami County
218-679-1880

CLASSIFIEDS

Members are invited to use
this FREE WANT AD service.

If you have anything to trade or sell, just drop a card to
Red Lake Electric Cooperative, Red Lake Falls, MN 56750.

For Sale

3x3x8 medium square bales of alfalfa and grass mixed hay.
No rain, no dust. Stored inside. 681-1720.

Wanted

Licensed child care provider has immediate openings for
1-year-old and above. Call 218-253-2266.

Want Ad Order Form FREE for RLEC members

For sale and wanted items only. All ads must be 50 words or less. Ads are published for Red Lake Electric members at no charge. Ads must be typed or in clear readable print. RLEC reserves the right to edit or reject any ad.

You can submit your ad by fax, email or mail. Fax ads to: (218) 253-2630; Email ads to: redlake@minnkota.com; Mail ads to: Red Lake Electric Cooperative, PO Box 430, Red Lake Falls, MN 56750.

Include your name, address and telephone number. All telephone numbers are presumed to have a 218 area code unless noted otherwise.

Use the form below to submit your ads.

Operation Round Up® grant applications due March 1

Organizations involved in community projects and charities are encouraged to apply for funds from Operation Round Up at this time. Completed grant applications are due in the Red Lake Electric Cooperative (RLEC) office by Tuesday, March 1, 2016.

Operation Round Up is a program adopted by RLEC headquartered in Red Lake Falls. Members choosing to "round up" their monthly electric bill payment provide funds for this effort. Today, 94 percent of RLEC members now choose (5210002.01 Wyandotte Town Hall) to contribute pennies each month to enhance their communities.

Funds will be donated primarily to nonprofit organizations to help fund specific projects or programs. Since the program began in 1993, \$465 thousand has been granted to community organizations and charities. Money is donated for the betterment of the community within the outside service area boundaries of RLEC.

The Red Lake Electric Trust Board of Directors determines grants. Board members are Patty Mickelson, Oklee; Van Swanson, Thief River Falls; Tishara Melcher, Middle River; Roger Johanneck, Red Lake Falls; and Bonnie Christians, Crookston.

To apply for Operations Round Up grants, organizations should contact the RLEC office in Red Lake Falls at 218-253-2168 or 800-245-6068. A short application must be completed and submitted along with a financial statement from the organization. The grant application form is available on the Cooperative's website: www.redlakeelectric.com.

For more information contact Roger Johanneck, general manager of RLEC, at 218-253-2168 or 800-245-6068.



Don't want to write a check? Want to save on postage?

Red Lake Electric has a new payment option to make paying your bill easy. This service is free. Sign-up is simple. Go to www.redlakeelectric.com and click on the Bill4U icon. There is now an app for your smartphone. Just go to your app store and download the free app. Bill4U allows you to:

- Make payments 24 hours a day directly from your checking or savings account, eliminating the cost of the check and postage.
- Access your billing statements at any time.
- View and compare your kilowatt-hour usage.

If you have any questions or need more information, visit our website or call Red Lake Electric 800-245-6068.





**Red Lake Electric
Cooperative Inc.**

***Time is
running out!***

– on the –

ELECTRIC HEATING REBATE PROGRAM!

Red Lake Electric's electric heating
rebate program expires

MAY 31, 2016

All equipment must be installed
before that date.

\$20/kW rebate on new off-peak electric heating equipment

- Must be the primary heating source.
- Must be new equipment but can be used in existing off-peak system.
- Must be on off-peak with qualified backup heating system.
- Must be hard-wired and equipped with off-peak meter.

Heat pump incentives

- Air-source heat pump – \$100/ton.
- Ground-source heat pump – \$200/ton.
Heating mode must be controlled on off-peak.

Maximum incentive per off-peak meter is \$600.

**HOMEOWNERS ADDING NEW
OFF-PEAK HEATING SYSTEMS
QUALIFY FOR THESE REBATES.**

**Contact our Member Services
Department for details at**

253-2168 or 800-245-6068

2016 PowerSavers Residential Incentives for Members



PowerSavers incentives, criteria and guidelines for resident and business members can be found at www.redlakeelectric.com or by calling 218-253-2168.

Equipment	Specifications	Rebate
CFL bulb	Replace incandescent bulb with CFL. ENERGY STAR® recommended.	\$2/bulb
LED Screw-In Bulb	40-60W equivalent incandescent. ENERGY STAR recommended.	\$4/bulb
LED Screw-In Bulb	65W or greater equivalent incandescent. ENERGY STAR recommended.	\$8/bulb
LED Fixture	Complete fixture or replacement kit. ENERGY STAR recommended.	\$8/install
LED Outdoor Fixture	LED Outdoor Fixture Wattage of <40 Watts. Dusk to dawn operation required. DesignLights™ Consortium or ENERGY STAR recommended.	\$20/fixture
LED Outdoor Fixture	LED Outdoor Fixture Wattage of >40 Watts. Dusk to dawn operation required. DesignLights™ Consortium or ENERGY STAR recommended.	\$40/fixture
Clothes Washer	Must be ENERGY STAR approved.	\$50/unit
Clothes Dryer	Must be ENERGY STAR approved.	\$50/unit
Refrigerator or Freezer	Must be ENERGY STAR approved.	\$25/unit
Remove & Recycle Old Refrigerator or Freezer	Recycling receipt required. Form online in Residential Incentives Application.	\$25/unit
Engine Block Heater Timer		\$10/unit
Electric Water Heater	Minimum 80-gallon total capacity, EF ≥0.91. Must be controlled under the utility's load management program.	\$150/unit
Programmable Thermostat		\$25/unit
Tune-Up for Central AC	Not valid on window AC units. Checklist on form must be completed with application.	\$25/unit
Tune-Up for Air-Source Heat Pump or Mini-Split Ductless Air-Source Heat Pump	Checklist on form must be completed with application.	\$25/unit
Supplemental Heating Source Air-Source Heat Pump	Must modulate to allow ENERGY STAR-rated Air-Source Heat Pump to operate down to 5° F and be on load control.	\$500/unit
Air-Source Heat Pump	14 SEER, 8.2 HSPF	\$400/unit
Air-Source Heat Pump	15 SEER, 8.5 HSPF	\$500/unit
Furnace (Air Handler) with ECM Blower	Furnace with an ECM Blower	\$100/unit
Mini-Split/Ductless Air-Source Heat Pump	15 SEER	\$500/unit
Ground-Source Heat Pump Open Loop <135,000 BTUH @ 59° F	16.2 EER/3.6 COP Maximum incentive \$2,500/home	\$200/ton
Ground-Source Heat Pump Closed Loop <135,000 BTUH @ 77° F	14.1 EER/3.3 COP Maximum incentive \$5,000/home	\$400/ton
Air Sealing	Pre and post blower test results required.	30% of sealing cost, max. \$300
Attic Insulation & Air Sealing	Must include air sealing. Improved from R-30 or less to R-50. Attic knee walls insulated to a minimum of R-25 up to R-30.	30% of sealing cost, max. \$500
Wall Insulation	Wall insulation improved from R-5 or less to R-11 or higher. Attic knee walls excluded.	30% of insulation cost, max. \$500