



Volts and Jolts

Published monthly for the members of
RED LAKE ELECTRIC COOPERATIVE, Inc.

One of the Minnkota Power Systems

SERVING THE FOUR-COUNTY AREA OF MARSHALL, PENNINGTON, RED LAKE AND POLK
and a portion of the lands of the Red Lake Band of Chippewa

VOL. 49 – NO. 4

RED LAKE FALLS (RED LAKE COUNTY), MINNESOTA 56750

JANUARY 2014

Member Meetings

Opportunity for information, discussion, fellowship

District meetings for the members of Red Lake Electric Cooperative will be held at three locations within the Cooperative's service territory. Meetings will be held within Districts 1, 4 and 5.

The meetings are held to inform attendees on current issues and programs associated with the Cooperative. Official business will be conducted at the three district meetings, which will include the election of a director candidate.

Even though a meeting may not be scheduled within the district in which you reside, you are welcome to attend a meeting of your choice. Anyone requiring special access or assistance at any one of the meeting sites should call Red Lake Electric in advance so arrangements can be made. Door prizes will be awarded and lunch will be served at each meeting.

2014 Member Meeting Schedule

Day, Date, Time	Meeting	Location
Mon., Jan. 27, 1:30 p.m.	District 4	Oklee Community Center, Oklee
Mon., Feb. 10, 1:30 p.m.	District 1	St. Peter's Catholic Church, Gentilly
Mon., Feb. 10, 7:00 p.m.	District 5	Community Church International, Thief River Falls



In this month's *Volts and Jolts*

Page 2
Manager's Comments

Line Department Report
Underground Cable

Page 3
Recipe Corner
From the Mail Bag

Page 4
Feature of the Month
Drafts Bar & Grill

Page 5
ESFI: Commit to Electrical Safety

Page 6
Why Higher Electric Bills in Winter?

Page 8
LaCrosse and Knott recognized for service

Protect electronics, prevent hazards

Big-ticket electronics, such as televisions, computers, and gaming consoles, are at the top of many peoples wish lists—but safety may not be. Purchasing, installing, and operating these items safely protects not only the expensive equipment, but also your entire home. The Electrical Safety Foundation International (ESFI) offers the following tips.

Safety tips

- Always purchase electrical

devices from a reputable retailer that you trust. Be especially wary when making online purchases.

- Check that all electrical items are certified by a nationally recognized testing laboratory, such as Underwriters Laboratories (UL), Canadian Standards Association (CSA), or Intertek (ETL).

- Always read and follow the manufacturer's instructions before use.

- Send warranty and product registration forms for new items to manufacturers in order to be notified about product recalls. Recall information is also available on the website of the U.S. Consumer Product Safety (2622002.02 Steven W. Nelson) [C o m m i s s i o n \(http://www.cpsc.gov\)](http://www.cpsc.gov)

- Never install an exterior television or radio antenna close enough to contact power lines if it falls.

- Never remove the ground pin (the third prong) to make a three-prong plug fit into a two-prong outlet.

- All appliances and cords should be kept in good condition. Examine them regularly for damage, and repair or dispose of damaged items.

- Keep cords out of reach of children and pets.

- Make sure entertainment centers and computer workstations have enough space around them for ventilation of electronic equipment.

- Keep liquids, including

drinks, away from electrical devices. Spills can result in dangerous shocks or fires.

- Unplug equipment when not in use to save energy and reduce the risks for shocks or fires. Power strips or surge protectors make a good central turn-off point.

- Always unplug electrical items by grasping the plug firmly rather than pulling on the cord.

- If you receive any kind of shock from a large appliance or any other electrical device, stop using it until an electrician has checked it.

- If an appliance smokes or sparks, or if you feel a tingle or light shock when it's on, stop using it. Discard and replace it or have it repaired by an authorized service provider.

Extension cords

- Extension cords are meant to provide a temporary solution. They should not be used as a long-term or permanent electrical circuit.

- Never use a cord that feels hot or is damaged in any way. Touching even a single exposed strand can result in an electric shock or burn.

- Only use weather-resistant, heavy gauge extension cords marked "for outdoor use" outside.

- Keep all outdoor extension cords clear of snow and standing water.

- Arrange furniture so that there are outlets available for equipment without the use of

extension cords.

- Do not place power cords or extension cords in high traffic areas or under carpets, rugs, or furniture (to avoid overheating and tripping hazards), and never nail or staple them to the wall or baseboard.

Surge protector or power strip?

Although surge protectors and power strips both allow you to plug several devices in one location, it is important for consumers to understand that they are not interchangeable. A true surge protector includes internal components that divert or suppress the extra current from surges, protecting your valuable electronics from electrical spikes, while a power strip simply provides more outlets for a circuit.

Source: Electrical Safety Foundation International

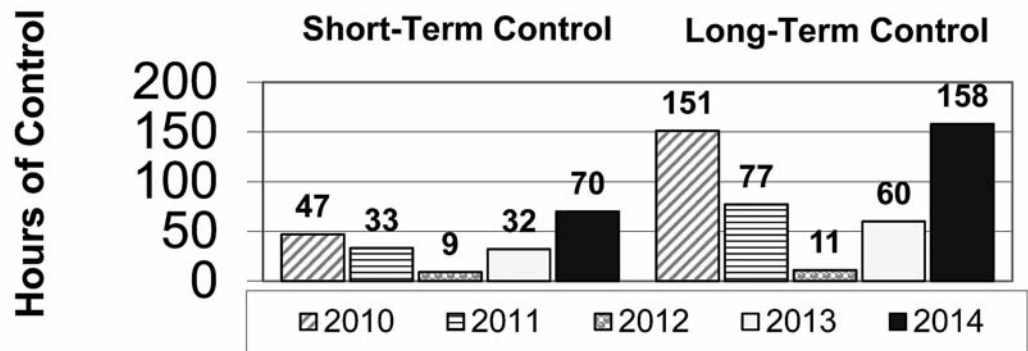


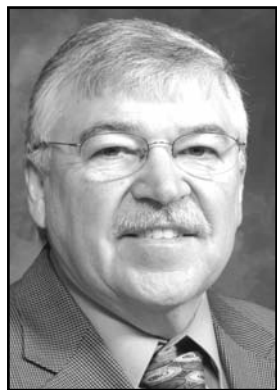
This surge protector also offers energy-saving options.
Source: Belkin

QUICK TAKES

A look at some statistics from your Red Lake Electric Cooperative

OFF-PEAK CONTROL HOURS Through January 13th





Manager's Comments

by Roger Johanneck



2014 Budget Approved

The 2014 operating and capital improvement (construction) budget was presented to and approved by your board of directors at their December board meeting.

There is no rate increase projected in the 2014 budget. The rates that went into effect with the October 2011 billing remain in effect for 2014.

RLEC's total cost of providing service to the members is budgeted at \$13 million, an increase of \$318,000 or 2.5 percent above 2014. The majority (\$274,000) of RLEC's increased cost will be to cover an increase in our peak demand charges from Minnkota Power. The rate that Minnkota bills us has not changed but our share of the capacity (load) was greater this past summer and that increase will show up in increased demand charges for 2014.

Wholesale power is expected to cost just over \$9.9 million in 2014 and makes up 77 percent of the \$13 million it will cost to provide RLEC members energy and electric service. Non-wholesale power expenses or RLEC's distribution costs are budgeted to increase \$44 thou-

sand or 1.5 percent in 2014.

The Cooperative's budgeted energy sales for 2014 is estimated to decrease slightly from 2013. 2013 energy sales were up as a result of a colder winter (heating season) and an increase in demand for grain drying. Will 2014 duplicate that increased demand for energy? We don't know. Despite a forecasted drop in energy use in 2014 from 2013, we expect energy sales to exceed what members have averaged the past few years.

Historical energy use trends show gradual sales growth over time but annual fluctuations up and down from year to year are a normal part of RLEC's history.

Included with our 2014 budget for revenue and expenses is our plan for capital improvements. In addition to the normal replacement and maintenance to the electric distribution system, we have plans to add new distribution equipment and tie-lines that will help us carry out our mission of being a reliable energy provider for our members.

We have historically taken a conservative approach to our budgeting process and we did

again this year. As the year unfolds, we've learned that it is much easier to deal with doing better than you expected vs. the opposite happening. It is our intention that the 2014 budget and our effort to carry this plan out will keep us on course to remain financially strong so that we can continue to be a source of reliable, competitively priced energy for you in 2014 and beyond.

Membership Meetings:

It is that time of year again, when the Cooperative holds its District meetings through out our service area. I encourage you to check out the meeting schedule included in this month's issue of the *Volts and Jolts* and welcome members to join us for one of the meetings located in your area. Our meeting format will be similar to previous years where we will provide information that we think you will find interesting (3233001.06 Robert E. Halvorson) and helpful, give you a chance to ask questions, and visit with RLEC staff and neighbors over pie and coffee. Hope to see you there.



Line Service Department

by Bob Guillemette

Underground cable replacement

The underground electrical cable that carries the high voltage power from the substations to the consumer has been constantly improving over the years. The first cables that were put in at Red Lake Electric were supposed to last 50 years and beyond, but they started to fail after about 15 years.

Due to the numerous and lengthy outages as a result of cable failures, the Cooperative started replacing cable that was installed in 1975 to 1977. This process started around 1999 and most of this vintage cable had been replaced by 2008.

The new cable that was put in has a thicker layer of insulation that is made from a rubber compound verses the previous plastic insulation. It also has an

outer jacket that prevents the outside neutral wires from corroding.

The second large run of underground was installed in the years 1979 and 1980. This cable had thicker insulation that was treated for "trees", which are the start of most of the insulation failures. It also had the neutral wires attached to the outside jacket in ridges and was called ridgetack cable.

Because of the better insulation the cable has lasted longer than the previous types, but the ridge lock feature has caused the neutral wires to corrode and break off where they enter the ridges. When the neutral deteriorates beyond a certain point it starts to put stress on the insulation and it fails.

Although this older cable has not been failing at a high rate, there is a plan to replace as much of it as possible within the next ten years. A portion of the 50 miles of this type of cable (3735037.06 Jon and Paula Praska) that is still in use is scheduled to be replaced through the Cooperatives current four-year work plan and Rural Utilities Service (RUS) loan.

Our plan for the coming year is to replace two and a half miles of line in Fairfax and Kertsonville Townships and two and a half miles in Gervais Township. On both of these projects we will be finishing replacement of longer sections that had portions of the line replaced earlier.

Annual Meeting March 26

Red Lake Electric Cooperative members are encouraged to mark their calendars for the Cooperative's annual meeting. The meeting will be called at 10:30 a.m. on Wednesday, March 26, at the Ralph Engelstad Arena in Thief River Falls.

Red Lake Electric Annual Meeting

MARCH 26

Director elections to be held

Red Lake Electric Cooperative members in District 1, 4 and 5 will soon elect directors to represent them. The initial elections will take place at the upcoming district meetings. Final election will occur at the Cooperative's annual meeting March 26 if there is more than one nominee.

Districts 1, 4 and 5 are currently represented by Bonnie Christians, Steve Linder and Mark Hanson, respectively.

Directors must be members residing in the district they represent and have no conflicts of interest regarding Red Lake Electric Cooperative. Any candidate for director must have his or her name stated as the "member" on the Cooperative's records.

For more information on director qualifications and responsibilities contact Roger Johanneck, General Manager, at 800-245-6068 or 218-253-2168.

Red Lake Electric Cooperative

Director qualifications requirements

No member shall be eligible to become or remain a director who:

- Is not a member of the Cooperative, receiving electric service at the member's primary residence in the district from which the director is elected.
- Within three years preceding a director candidate's nomination was an employee of the Cooperative.
- Is or becomes, or at any time during the three (3) years preceding a director candidate's nomination shall have been employed by a labor union, which represents, or has represented, or has endeavored to represent any employees of the Cooperative.
- Is a parent, spouse or cohabitant of any employee of the Cooperative.
- Is a person who is a parent, spouse or cohabitant of an incumbent director who is not up for re-election at that time.
- Is in any way employed by or substantially financially interested in an enterprise competing with the Cooperative or any Cooperative-affiliated businesses.
- Is or becomes the full-time employee or agent of, or who is or becomes the full-time employer or principal of, another director.

Director nomination and election procedure

The procedure for which directors can be nominated and elected for Red Lake Electric Cooperative is outlined in Article II, Section 10, of the Cooperative's Bylaws. That section reads as follows:

SECTION 10. NOMINATION AND ELECTION OF DIRECTORS. (a) Nomination at District Meetings. Not less than forty days nor more than sixty days before any meeting at which directors are to be elected, the board of directors shall call a separate meeting of the members of each district from which directors are to be elected, at a suitable place in such district for the purpose of selecting a candidate for director to represent the members located within such district. The notice of such meeting shall be delivered to each member located in such district as provided in Section 2 of this Article and shall indicate the district to which such member belongs. The notice shall state that nominations for a director are to be made at the meeting. The district meeting shall be called to order by the director representing the district or by another designated representative of the board of directors, or in his absence, by any members residing in the district. The members shall then proceed to elect a chairman, who shall be someone other than a director, and who shall appoint a secretary to act for the duration of the meeting. Members of other districts present at the meeting may be heard but shall have no vote. Nominations for candidates for director shall be made from the floor at the meeting, and any member residing in the district shall have the right to nominate one candidate. The meeting shall remain open for nominations until no further nominations are forthcoming.

Candidates must be members residing in the district and must possess the qualifications for director specified in Section 2 of Article III of these bylaws. Voting shall be by ballot and proxy voting shall not be permitted at any district meeting. Each member may vote for one candidate. The candidate receiving the highest number of votes shall be declared the official candidate of the district. In case of a tie, the winner shall be determined by the flip of a coin. The minutes of the district meeting shall set forth, among other matters, the name of each person nominated at the meeting and the number of votes received by each and shall specify the official candidate of the district. A certified copy of the minutes signed by the Secretary and the Chairman of the district meeting shall be delivered to the secretary of the Cooperative at the following meeting of the board. (b) Nomination of Directors by Petition. Nomination for director can also be made by petition. Fifteen (15) or more members may make a nomination in writing to the Secretary over their signatures not less than thirty (30) days prior to the annual meeting. This petition nomination must be in the format prescribed by the Secretary. Blank nomination petitions shall be available to all members at the Cooperative office. All petition nominees shall be listed in the notice of annual meeting and their names shall be printed on the election ballot. (c) Election of Directors. At the annual meeting, the Secretary of the Cooperative shall place in nomination the names of the official candidates of each district. Election of directors shall be by printed or mimeographed ballot, separate ballots to be provided for each district, listing the candidates in alphabetical order. Only members of a district shall be entitled to vote for director to be elected from that district, and each member or member's spouse shall be entitled to vote for one candidate from the district, in which he is a member. The candidate from each receiving the highest number of votes at this meeting shall be declared elected as director. In the case of a tie vote, the winner shall be determined by the flip of a coin. Notwithstanding anything contained in this section, failure to comply with any of the provisions of this section shall not affect in any manner whatsoever the validity of any election of directors.

The _____ has, at an official
name of member

meeting, designated _____
name of delegate

to represent us at the 2014 District Meeting of the Red Lake Electric Cooperative, Inc.

Attest _____
Chairman or President

Attest _____
Clerk or Secretary

STATEMENT OF NONDISCRIMINATION

Red Lake Electric Cooperative, Inc. is the recipient of Federal financial assistance from the Rural Electrification Administration, an agency of the U.S. Department of Agriculture and is subject to the provisions of Title VI of the Civil Rights Act of 1964, as amended, Section 504 of the Rehabilitation Act of 1973, as amended, the Age Discrimination Act of 1975, as amended, and the rules and regulations of the U.S. Department of Agriculture which provide that no person in the United States on the basis of race, color, national origin, age or handicap shall be excluded from participation in, admission or access to, denied the benefits of, or otherwise be subjected to discrimination under any of this organization's programs or activities.

The person responsible for coordinating this organization's nondiscrimination compliance efforts is Roger Johanneck, Manager.

Any individual, or specific class of individuals, who feels that this organization has subjected them to discrimination may obtain further information about the statutes and regulations listed above from and/or file a written complaint with this organization; or the Secretary, U.S. Department of Agriculture, Washington, D.C. 20250; or the Administrator, Rural Electrification Administration, Washington, D.C. 20250. Complaints must be filed within 180 days after the alleged discrimination. Confidentiality will be maintained to the extent possible.

RED LAKE ELECTRIC COOPERATIVE, Inc.

VOLTS & JOLTS

(USPS 663-400)

Published monthly by the Red Lake Electric Cooperative, Inc., 412 International Drive SW, Red Lake Falls, Minnesota 56750-0430, in the interest of its members and others. Periodical Postage Paid at the U. S. Post Office in Red Lake Falls, Minnesota 56750. POSTMASTER, SEND ADDRESS CHANGES to Volts & Jolts, c/o Red Lake Electric Cooperative, Inc., P. O. Box 430, Red Lake Falls, Minnesota 56750-0430. E-mail: redlake@minnkota.com

OFFICERS AND DIRECTORS

PRESIDENT Bonnie Christians
VICE PRESIDENT Robert Finstad
SECRETARY-TREASURER Mark Hanson
DIRECTORS Kelly Lundeen,
Steven Linder, Peter Mosbeck,
Colette Kujawa, Randy Versdahl,
Stacy Blawat
Subscription Rate \$2.50 per year

NOTICE

Hidden within the text of the articles of this issue of the Volts & Jolts are the names and account numbers of some RLEC members. They will appear within the articles in parenthesis as such (9999999.99 Roger P. Member). If you find your name and account number, clip it out and send it with your next payment. You will be credited with \$5 on your electric bill.

NOTICE TO MEMBERS

The Red Lake Electric Cooperative, Inc., of Red Lake Falls, as an operating electric utility in the state of Minnesota, is obligated to interconnect with and purchase electricity from co-generators and small power producers.

The cooperative will provide information relating to the said interconnections to all interested member-consumers of the cooperative free of charge upon request.

Any disputes between the cooperative and its member-consumers over interconnection, sales and purchases are subject to resolution by the Minnesota Public Utilities Commission.

Recipe Corner



Sour Cream Raisin Bars

Filling:
2 C. raisins
1 C. white sugar
3 eggs, slightly beaten
2 1/2 Tbsp. cornstarch
1-12 oz. carton sour cream
1 tsp. cinnamon

Crust and Topping:
1 C. brown sugar
1 3/4 C. oatmeal
1 tsp. soda
1 C. butter
1 3/4 C. flour
1/2 tsp. salt

Filling: Mix thoroughly, cook together until thick in heavy saucepan. Use low heat; stir constantly to prevent scorching. Cool.

Crust and Topping: Mix until crumbly. Press half the crust mixture into greased and floured 9x13 pan. Add filling, then sprinkle remainder of crumbs over top. Bake at 350° for 20 minutes.

Oatmeal Chocolate Chip Cookies

2 C. Crisco
1 1/2 C. brown sugar
1 1/2 C. white sugar
4 eggs, beaten
vanilla
1 6 oz. pkg. chocolate chips
1 6 oz. pkg. butterscotch chips
3 C. flour
2 tsp. salt
2 tsp. soda
6 C. oatmeal

Cream butter, shortening, brown and white sugar. Add eggs and beat. Combine flour, salt and soda. Add to above mixture and mix well. Add remaining ingredients and stir. Shape into balls and flatten a little. Bake 8 minutes at 375°. Make a large batch.

Orange Raisin Cookies

1 C. shortening
2 C. brown sugar
2 eggs
1 tsp. vanilla
2 C. oatmeal
1 1/2 tsp. soda in 1/2 C. warm water
1/2 tsp. salt
3 1/2 to 4 C. flour
2 oranges and 1 C. of raisins, grind (fine)

Combine all ingredients, reserve 2 1/2 Tbsp. of orange/raisin mixture for frosting. Drop by teaspoonfuls and bake 10 to 12 minutes in 350° oven.

Frosting:

3 Tbsp. melted butter or margarine
2-3 C. powdered sugar
hot coffee

Combine melted butter or margarine and powdered sugar. Add hot coffee for right consistency. Add reserved orange/raisin mixture. Frost when cookies are cool.

Vermont Maple Cookies

1/2 C. shortening
1 1/2 C. packed brown sugar
2 eggs
1 C. commercial sour cream
1 Tbsp. maple flavoring
2 3/4 C. flour
1/2 tsp. soda
1 tsp. salt
1 C. chopped nuts

Mix shortening, sugar and eggs thoroughly. Stir in sour cream and vanilla. Measure flour by dipping method or by sifting. Stir together flour, soda and salt; blend into sour cream mixture. Mix in nuts. Chill dough if soft. Drop rounded tablespoonfuls of dough about 2" apart on greased baking sheet. Bake 10 minutes at 375°. Spread with maple butter glaze when cookies are cool.

Maple Butter Glaze:

1/2 C. butter
2 C. powdered sugar
2 tsp. maple flavoring
Heat butter until golden brown. Blend in powdered sugar and maple flavoring. Stir in 2-4 Tbsp. hot water until icing spreads smoothly.

Death By Chocolate

3/4 C. cocoa
1 C. butter, melted
1 tsp. vanilla
1/4 tsp. salt
2 C. sugar
4 eggs
1 1/4 C. flour

Preheat oven to 350°. Grease 9x13 pan. Melt butter. In bowl, stir cocoa and sugar together. Add melted butter. Add eggs and vanilla. Add flour and salt. Mix just until smooth. Bake at 350° until brownies just pull away from sides of pan (25-30 minutes). Cool. Crumble baked, cooled brownies and place 1/2 in 9x13 pan.

Dessert:

2 - 3.5 oz. pkgs. instant chocolate pudding
16 oz. Cool Whip
8 Heath or Skor bars, crushed
1 C. pecans, chopped

Mix pudding as directed. When set, spread 1/2 on brownie layer. Then layer 1/2 the Cool Whip, 1/2 the candy bars and 1/2 the pecans. Repeat all layers.

Refrigerate several hours before serving.

Banana Cream Pie

1 9" baked pastry shell
3 Tbsp. cornstarch
1 2/3 C. water
1 (14 oz) can sweetened condensed milk
2 Tbsp. margarine or butter
3 egg yolks, beaten
1 tsp. vanilla
3 med. bananas
lemon juice
whipped topping

In sauce pan dissolve cornstarch in water. Stir in sweetened condensed milk and egg yolks. Cook and stir until thickened and bubbly. Remove from heat, add margarine and vanilla. Cool slightly. Slice 2 bananas; dip in lemon juice. Arrange bananas on bottom of pastry shell. Pour filling over bananas; cover. Chill 4 hours or until set. Top with whipped cream. Garnish top of pie with remaining bananas. Refrigerate.

Never Fail Pie Crust

3 C. sifted flour
2 tsp. vinegar
1 1/4 C. shortening or 1 C. lard
5 Tbsp. ice water
1/2 tsp. salt
1 egg

Blend flour, shortening and salt with pastry blender. Beat egg, vinegar and water.

Mix flour and egg mixtures with fork until mixture forms a ball. Roll out on lightly floured surface to 1/8" thick.

Makes double crust for 9" pie or 3 single crusts. Freezes well.

Raw Apple Bundt Cake

1 C. cooking oil
2 C. sugar
2 eggs
2 1/2 C. flour
2 tsp. baking powder
1 tsp. soda
1 tsp. salt
1 tsp. vanilla
2 C. raw apples, diced
1 C. walnuts, optional

Combine oil, sugar and eggs. Mix well until well blended. Sift together dry ingredients. Combine the two mixtures. Add vanilla and apples. Stir until mixed together. Add nuts. Put in lightly oiled Bundt pan. Bake for 55 minutes at 350°. (Sprinkle 1/4 C. cinnamon sugar mixture over the top before baking. Adds a special flavor.)

Subzero temperatures, high market prices force load control

Off-peak heating consumers of Red Lake Electric have experienced a jump in load control hours in late December and early January due to a combination of high loads, extremely cold temperatures, low wind production and expensive wholesale power market prices.

The widespread extreme cold weather has driven electric loads to high levels not seen in the Midwest for many years. With temperatures dropping to 20 and 30 below zero across the region for several days, Minnkota Power Cooperative, our wholesale power provider, made a reasonable and economical choice to control the off-peak loads and avoid costly power market purchases.

"Because of these extreme low temperatures and the high demand for electricity, power prices in the wholesale market place were well above Minnkota's economical purchase price," said Todd Sailer, Minnkota energy supply manager.

Before controlling off-peak loads, Minnkota first looks to purchase energy from the wholesale power market. When power cannot be obtained economically, Minnkota and the associated systems choose to control off-peak electric sys-

tems. The load management program protects consumers from skyrocketing market prices and prevents the need to build new power plants just to serve peak loads.

"The cost to purchase and deliver power to the associated systems can change at a moment's notice," Sailer said. "Load management is a vital tool for Minnkota to use to keep wholesale power prices competitive."

Sailer said that even with the recent cold temperatures, end-of-season load control totals will still be near the preseason estimate of 250 hours.

All members are encouraged to check their backup heating systems, especially those who use propane or fuel oil. Sailer said (4404009.01 Dale L. Stark) members with a well-maintained backup heating system should not notice a difference in comfort level when their off-peak heating system is controlled.

"The transition between the two systems should be seamless," he said.

Now taking tree orders for spring 2014

Red Lake County Soil & Water Conservation District (SWCD) is taking tree orders now for the spring tree planting season. Anyone interested in purchasing trees from the Red Lake County SWCD should have their order in by Jan. 30. Tree order forms are available at our office, on our website www.nwmnswcd.org (click on Red Lake County tab; and then on the Programs and Services tab) or we can mail you a form. The SWCD office is located in the basement of the Wheat Grower's Building south of Red Lake Falls.

If you are interested in placing a tree order please call the Red Lake County SWCD office at 218-253-2593 ext. 4.

Red Lake Electric Cooperative, Inc. Operating Report MONTHLY COMPARISON

	NOV 2012	NOV 2013
Total Revenue	\$ 1,129,310	\$ 1,243,629
Total Margins	\$ 63,179	\$ 137,657
Cost of Power	\$ 847,133	\$ 901,844
KWH's Purchased	12,302,205	13,749,127
Capital Credits Paid to Estates ..	3,484	3,225

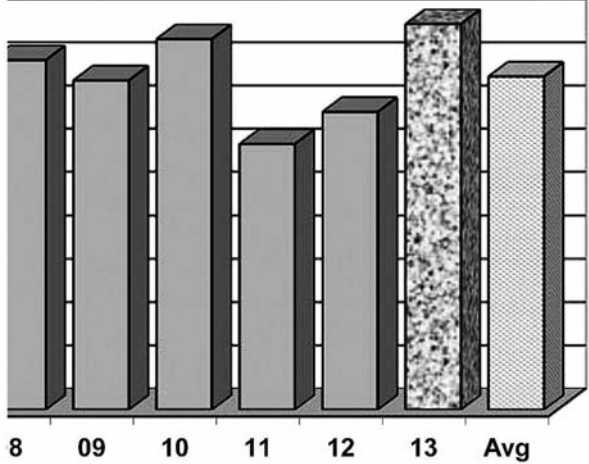
YEAR TO DATE COMPARISON

	NOV 2012	NOV 2013
Total Revenue	\$11,838,819	\$12,400,615
Total Margins	\$ 653,353	\$ 1,141,088
Cost of Power	\$8,608,224	\$ 8,678,856
KWH's Purchased	115,852,220	121,031,697
New Service Connections	48	27
Customers Served	5,230	5,268
Capital Credits Paid to Estates ..	83,403	95,934
Miles of Line		
Overhead	2,323	2,324
Underground	249	256

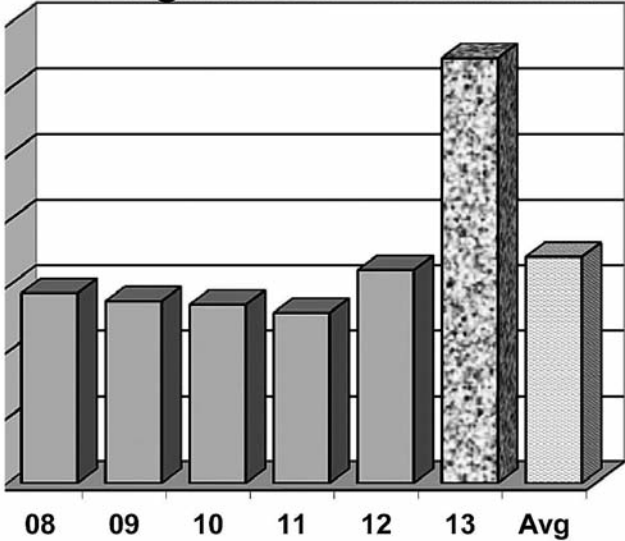
DEGREE DAYS

To determine degree days, you must calculate the daily mean temperature for the time period you are measuring. Degree day computation is based on the assumption that a building does not require any heat if the outside temperature averages 65 degrees during a 24-hour period. To obtain a degree day figure, the high temperature and the low temperature for the day are added and the total divided by two. That figure is then subtracted from 65. For example, if the high temperature was 30 degrees and the low temperature 10 degrees, the figure would be 30+10=40; 40/2=20; 65-20=45. This would be a 45-degree day. The higher the degree day figure, the more heat required to warm your home.

DEGREE DAYS November 20 to December 19



Year To Date August 20 to December 19



From the Mail Bag

Dear RLEC,

Thank you so very much for your support of the Clayton Stigen benefit in November. Your donation was very much appreciated. It does make a difference! Thank you.

Clayton Stigen
Goodridge

Dear RLEC,

Thank you all for keeping the heat and lights on for all of us!

We are so thankful for all the people who keep things going on the home front as well as those who serve away from our shores. God bless you all! Many thanks for recently fixing our yard light as well!

Mr. and Mrs. Alvin H.
Nygard
Thief River Falls

Mission Statement

It is the mission of Red Lake Electric Cooperative to enhance the quality of life for people of our service area by consistently providing quality electric service and other valued services while holding our employees, our community and our environment in high regard.



Red Lake Electric Cooperative, Inc.

One of the Minnkota Power Systems

Turn your junk into cash!

www.luckentrucks.com

State certified scale
get paid what you deserve

Car Crushing & Tin Bailing
Lugger & Container Services

We buy anything from cars to combines, including the kitchen sink and everything in between...

We want your scrap!

- Prepared Steel
- Unprepared Steel
- Unstripped Motors
- Tin
- Car Bodies
- Batteries
- Brass
- Alum. Trans.
- Radiators
- Die Cast
- Stainless Steel
- Aluminum
- Copper
- Lead

You call. We haul.
Call 1-800-874-4107
\$\$\$ Cash \$\$\$ Cash \$\$\$ Cash \$\$\$

Lucken Corp.

23125 430th St. SE, Winger, MN 56592
jeff@luckentrucks.com or john.lucken@luckentrucks.com

KEZAR Music

Joel Kezar, Owner
Milo Ballingrud, Sales

Store Hours: Monday-Friday 8 A.M. - 6 P.M. Saturdays 10 A.M. - 5 P.M.

Buy • Sell • Trade • Rentals
New & Used instruments
Repairs • Sound & Lighting • Installations
Recording Studio • Lessons • Print Music

315 Duluth Avenue N. Thief River Falls 681-2148 • 1-800-566-2148
kezarmusic@mncable.net www.kezarmusic.com

Like us on Facebook

Cup @ JOEZ

Farmers Union Oil Company

Thief River Falls 218-681-3512



- Fertilizer
- Petroleum products
- Town and country deliveries
- Tires, batteries, accessories
- Farm supplies

WILCOX PLUMBING AND HEATING, Inc.

RED LAKE FALLS

Plumbing/Heating/Air conditioning

BILL H. MOSER, Master Plumber
License No. 1770PM
BILL J. MOSER, Master Plumber
License No. 6039PM
JASON JOHNSRUD, Master Plumber
License No. 064717PM
Refrigerant Certified No. CFR089400285



- In-floor heating • Oil furnaces
- Pressure systems • Gas furnaces
- Electric heat pumps

FREE ESTIMATES
COMPLETE SALES
AND SERVICE

218-253-4347

The Head-Quarters Hair and Tanning Salon

HAIRSTYLING
FOR MEN AND
WOMEN

PARK PLACE MALL
RED LAKE FALLS, MINNESOTA

218 253-4223

Security STATE BANK



- Operating loans
- Vehicle loans
- Farm real estate loans
- Consumer loans

"We appreciate your business."

218-796-5157
Fax 218-796-5158

anthony.holthusen@ssboklee.com



"THE FARMERS' HELPING HAND"

Dave Miller Agency

DAVE MILLER, AGENT
RURAL ROUTE 1
VIKING, MINNESOTA 56760



- All-Risk Crop Insurance
- Crop/Hail Coverage

218-523-5861

VOLTS AND JOLTS FEATURE OF THE MONTH

Drafts in Crookston combines metropolitan menu with home-town ambiance

By Heather Blodgett

Drafts, located next to the Crookston sports center on the east end of Crookston, has been a lifelong goal for owners Brent and Jasmine Melsa. "We've talked about having our own restaurant for so long," says Jasmine. "We've both always been in the business."

The husband and wife team have ample experience in the industry. The Crookston natives both attended the University of Minnesota Crookston, Brent for hotel, motel and restaurant management and Jasmine for dietetics. Brent went on to work in the field as director of dining services for UMC, director of food and nutrition at Altru and food director at Seven Clans Casino in Thief River Falls, among many other corporate and fast food positions, before starting Drafts. Jasmine has extensive experience bartending and in bar management as well as in her previous position as manager of food services at Riverview.

The sports bar took more than a year to become reality. The pair worked on every aspect themselves, including choosing the location, designing the layout, and decorating the interior. The location choice has paid off. Drafts sees hockey traffic as they are next door to the arena, snowmobilers as a trail runs next to their parking lot, and lots of lake traffic in the summer.

The floor plan features a bar side with high top tables, a pull tab station, large windows exposing the kitchen, and a dominant bar displaying the 30-beer tap while the dining side has a family feel and local artwork, however children and families are welcome on either side.

"It's a family friendly atmosphere," explains Jasmine. "We've got some nightlife, too." Personal touches can be seen throughout the décor as some was created by family specifically for the place and Jasmine integrated her vast bar coaster collection into the bar and counter tops. "I collected those for over 20 years. Some are from places I've worked and others I've visited. They're personal. I kept them because I always knew I'd have a bar for them."

The couple chose the Drafts name because it has a double meaning. They



thought it fit a sports bar well, as it alludes to the professional sports team draft, and it focuses on the large selection of beers they feature. "Craft beers are such a big thing now," explains self-proclaimed beer geek Jasmine. "I've always liked craft beers and we felt that Crookston was ready for the beers and would support something like that." Their tap selection, a focal point behind the bar, features 30 beers, one of which is a draft root beer. The selection is always changing as new beers come in and seasonal flavors weave into the lineup. Often customer's requests and suggestions can be found on tap as well. Wine, liquor and specialty martinis, created using Jasmine's own recipes, round out the bar.

The couple partnered with executive chef Ryan Storey for their menu. Storey, a graduate of the Culinary Institute of America in New York City, previously worked with Brent as executive chef for Altru and is a part owner in this venture. Storey places importance on details, like cutting his steaks in-house and using fresh, never frozen, beef for their signature burgers. Drafts' catering also allows Storey to explore his creativity.

The menu features appetizers, burgers, pasta, chicken, steak and more. The

nightly specials really show off Storey's imagination. Mondays feature a make your own macaroni and cheese, where diners pick their sauce, herb or seasoning, cheese, meat and vegetables to mix into the pasta. This has been a huge hit for the restaurant. Tuesdays feature chicken mole and mojo beef taco plates. Thursday adds lavosh and mussels to the choices and highlights pasta and martinis. Friday's special is prime rib and a Sunday barbecue dinner menu offers brisket, ribs, chicken and pulled pork with traditional sides to finish the week. "The food is always exciting!" says Jasmine. The owners want the food options to stay fresh, so the menu and specials often change to give customers something different. "It's a small community and we want to keep it fun and new," she says.

"We let the chef take care of the kitchen and staff and we do the front of the house," says Brent of the couple. This is evident as you are likely to see one or both of them hard at work if you venture inside. The pair has had only two days off, Thanksgiving and Christmas, since opening in August. "We expected it though," says Brent, "We expected the workload." They each take turns working one long day, from open to close, and a shorter day that lets them

spend more time with their family, which includes two daughters and a son. "It's hard in the morning when that alarm goes off and you know it's your long day, but it's okay because I love it. I

wouldn't trade it," explains Jasmine.

Drafts focuses on keeping things local. When building, they used local builders, plumbers, electricians, and supplies. Energy star equipment and efficient LED lighting were used in the project that allowed the business to take advantage of Red Lake Electric Coop's conservation improvement program and rebates. Storey utilizes as much local produce as possible and even works with local growers to determine what they plant for use in the restaurant. Jasmine sources local beers from Minnesota and Fargo. "I'm always asking my vendors, what else do you have that's made locally?" she explains. Even the art is local, as their logo was designed in Crookston and Crookston sports memorabilia and canvas photos of locations in UMC and Crookston, taken by Jasmine's sister-in-law, hang prominently throughout the place. The pull tabs benefit Crookston youth baseball.

They've recently added off sale to the business so customers can take many of those craft beers home. Wine and liquor is also available off sale and the Melsa's hope

to expand their selection in the future. Summer will bring outdoor patio seating for customers and possibly some bands or special outdoor events.

The bar and grill has been very well received by the community. It gives customers another option in the area, without having to make the trek to Grand Forks. "It's amazing how many people have come from other small communities," says Brent of their customer base.

Many customers have expressed that when they walk in the door, they feel as though they've journeyed to the type of place you'd find in a larger city. Drafts has been able to deliver metropolitan food and beverage offerings but still keep the down-to-earth local

ambiance that combines for a friendly, welcoming atmosphere. "We've been very busy and things are going well," explains Brent. "We're excited to be here and we appreciate the support."

Drafts opens daily at 11 a.m. and often posts information and specials on their Facebook page.



Brent and Jasmine Melsa are the owners of Drafts Sports Bar and Grill, a Crookston establishment which opened in the spring of 2013.

Bray-Gentilly Mutual Insurance Co.

Locally Owned and Operated
Serving Policyholders Since 1900

218-683-3200

2017 Hwy. 59 SE • P.O. Box 592
Thief River Falls, MN 56701

INSURANCE FOR
FARMS, HOMES
AND PERSONAL
PROPERTY

TELEPHONE US FOR AN
AGENT NEAR YOU!

Email:
1bodyrfl
@hotmail.com



1BODY
HEALTH & FITNESS

Park Place Mall,
Red Lake Falls
253-2111

Fitness Center
Hours:
5 a.m.-Midnight Daily

www.1bodyhealthandfitness.com

Kilen's Custom Cleaners

- Commercial
- Residential
- Custodial



Specializing in
Water, Fire & Soot Restoration

Jordan Kilen - Owner
(218) 686-2591

www.kilencustom.com

Free Estimates

"Achieving excellence
one customer at a time"

Want to cut your heating cost by up to 50%?

Buy a YORK Affinity
heat pump today!



GROVE MECHANICAL, INC.

Your hometown heating &
air conditioning team!

Serving Crookston and the surrounding
communities for 30 years.

(218) 281-3863

OFFICE PHONE

253-2168

OUTAGE PHONE

253-2200

1-800-245-6068



Red Lake Electric
Cooperative, Inc.

One of the Minnesota Power Systems



The large tap is prominently placed behind the bar at Drafts and serves as a focal point in the east side of the restaurant.



A unique chalkboard door at Drafts lists the current beers on tap, which are always evolving.

ESFI urges the public to commit to electrical safety in 2014

The dawning of a new year often provokes positive lifestyle changes, and the Electrical Safety Foundation International (ESFI) is encouraging the public to keep electrical safety in mind while making resolutions for 2014.

In the United States, home electrical problems account for an average of 47,820 home fires each year, resulting in 455 deaths, 1,518 injuries and \$1.5 billion in property damage, according to the National Fire Protection Association (NFPA). The colder weather the New Year brings also leads to the increased use of electrical products, making people more susceptible to electrical fires, electrocutions and injuries.

“The New Year signifies a new beginning, which makes it the perfect time to identify any possible electrical hazards and take proactive measures to improve the safety of your home,” said ESFI President Brett Brenner. “This commitment to safety begins with the safe removal of holiday decorations and continues with the proper usage of home heating and other electrical equipment.”

Lay the groundwork for an electrically safe 2014 by wrapping up your holidays with these tips from ESFI:

Take down and put away all

electric decorations at the beginning of January. Check for frayed wires, cracked sockets, or burned out bulbs. Discard broken or faulty lights.

Make sure that electrical cords are in good condition. Inspect for frayed wires and cracked insulation.

Separate and label indoor and outdoor decorations. Store them in a dry location that is safely out of reach of children and pets.

Send warranty and product registration forms for new decorations to manufacturers in order to be notified about product recalls.

Remove and properly dispose of Christmas trees. The best way to dispose of a tree is to bring it to a recycling center or contact a community pickup service.

Keep your home safe by learning the basics of how home heating and electrical systems work, and making sure they are properly maintained with these tips from ESFI:

Always have a qualified, licensed professional install stationary space heating equipment, water heaters or central heating equipment according to the (6909001.02 Piche Farms) local codes and manufacturer instructions.

Install carbon monoxide

alarms on every level of your home and outside each sleeping area.

Have your furnace cleaned and inspected annually by a licensed, qualified professional.

Be sure circuit breakers and fuses are correctly labeled with their amperage and the rooms, circuits, or outlets they service.

Consider having a qualified, licensed electrician replace your standard circuit breakers with combination-type arc fault circuit interrupters (AFCIs).

Make sure ground fault circuit interrupters (GFCIs) are installed in your kitchen, bathrooms, workshop, basement, garage, outdoors, and any other areas where water and electricity are likely to come in contact.

Examine electrical outlets and replace missing or broken wall plates to ensure that wiring and components are not exposed.

Childproof your home by installing tamper resistant receptacles (TRRs), which provide a simple, permanent solution to help prevent childhood shock and burn injuries from tampering with a wall outlet.

Visit www.esfi.org for more tips and tools to keep you safe all year long.

Courtesy of: Electrical Safety Foundation International



This bar top was created specifically for Drafts using bar coasters from owner Jasmine's personal collection. She has been saving coasters for over 20 years in hopes she would one day have a place to display them.



The off sale beer options at Drafts mimic many available on tap. Wine and spirits are also available and Jasmine hopes to expand their off sale beer selection in the future.

\$15.68 HOURLY STARTING RATE!

Digi-Key is looking for candidates to fill a new evening shift in our state-of-the-art Product Distribution Center! Job responsibilities will include a variety of tasks associated with either picking or packaging of electronic components.

Hours: Monday – Friday 1:30 p.m. – 10:00 p.m.

CALL 218-681-7930 OR VISIT US ONLINE AT
DIGIKEY.COM/CAREERS



Get your blood pressure checked regularly

Check your blood pressure at least every two years starting at age 18. It's important to check your blood pressure often, especially if you are over age 40.

High blood pressure is the same as hypertension. Hypertension ("hy-puhr-TEHN-shun") is the medical term for high blood pressure. High blood pressure has no signs or symptoms. The only way to know if you have high blood pressure is to get tested.

By taking steps to lower your blood pressure, you can reduce your risk of heart disease, stroke, and kidney failure. Lowering your blood pressure can also help you live a longer, healthier life.

What is blood pressure?

Blood pressure is how hard your blood pushes against the walls of your arteries when your heart pumps blood.

Arteries are the tubes that carry blood away from your heart. Every time your heart beats, it pumps blood through your arteries to the rest of your body.

How can I get my blood pressure checked?

To test your blood pressure, the nurse or doctor will put a cuff around your upper arm and pump up the cuff with air until it feels tight.

This usually takes less than a minute. The doctor or nurse can tell you what your blood pressure numbers are right after the test is over.

You can also check your own blood pressure with a blood pressure machine. You can find blood pressure machines in malls, pharmacies and grocery stores.

What do blood pressure numbers mean?

A blood pressure test measures how hard your heart is working to pump blood through your body.

Blood pressure is measured with two numbers. The first number is the pressure in your arteries when your heart beats. The second number is the pressure in your arteries between each beat, when your heart relaxes.

Compare your blood pressure to these numbers:

Normal blood pressure is lower than 120/80 (said "120 over 80").

High blood pressure is 140/90 or higher.

Blood pressure that's between normal and high (for example, 130/85) is called pre-hypertension ("PREE-hy-puhr-tehn-shun"), or high normal blood pressure.

Am I at risk for high blood pressure?

One in three Americans has high blood pressure. Most Americans over age 40 are at risk.

You may be at extra risk for high blood pressure if:

- Are overweight or obese
- Smoke
- Have a family history of high

blood pressure

Eat foods high in sodium (salt)

Get less than 30 minutes of activity on most days

Drink more than a moderate amount of alcohol (two drinks a day for men or one drink a day for women)

What if I have high blood pressure?

If you have high blood pressure, talk to your doctor.

Take these steps to lower your blood pressure:

Eat healthy foods that are low in saturated fat and sodium (salt). Eating less sodium can lower your blood pressure. Look for foods that say "low sodium," "reduced sodium," or "no salt added." When you go food shopping, check the Nutrition Facts label for the Daily Value (DV) of sodium. Choose foods with five percent or less of the DV (Daily Value) of sodium. Foods with a DV of 20 percent or more are high in sodium.

Eating more potassium can also help lower your blood pressure. Good sources of potassium include potatoes, cantaloupe, bananas, beans and yogurt.

Be active by aiming for two hours and 30 minutes a week of moderate aerobic activity. Regular physical activity can reduce your risk of high blood pressure. Try walking fast, dancing, riding bike, swimming or aerobics to get started. Small changes can add up. For example, losing just ten pounds can lower your blood pressure by several points.

Quit smoking as it increases your chance of having high blood pressure. Get tips to quit for good.

Drink alcohol only in moderation. This means no more than two drinks a day for men or one drink a day for women.

Managing stress can help prevent and control high blood pressure. Deep breathing and meditation are good ways to relax and manage stress.

Check your blood pressure regularly. Many shopping malls, pharmacies, and grocery stores have blood pressure machines you can use. Most of these machines don't cost any money. You can also have a doctor or nurse check your blood pressure. (7209006.01 Michael L. Geffre) Some people may need medicine to control their blood pressure.

Find out your blood pressure as soon as possible. If you do, take steps to protect your health.

What about cost?

Blood pressure testing is covered under the Affordable Care Act, the health care reform law passed in 2010. Depending on your insurance, you may be able to get your blood pressure checked by a doctor or nurse at no cost to you. Check with your insurance provider to find out what's included in your plan.

Why higher electric bills in winter?

Monthly electricity bills are typically higher in winter months, even if you don't have electric heating in your home. Little things that are unique to the winter season can add up. Listed below are a few items that might contribute to your increased electric usage this time of year:

1. Even non-electric heating systems require electricity to power blowers or circulation pumps. These devices will operate more hours as outside temperatures drop. In extremely cold weather, some systems run almost constantly to keep up.

2. During the darker days of winter, we turn on more light-

ing, plus lamps stay on longer due to shorter daylight hours.

3. Some folks add a bit more warmth with electric fireplaces or space heaters in living areas, garages or workshops. Engine heaters for cars, trucks and tractors will also add their share to the monthly bill.

4. With visiting family over holidays, hot water use for showers, dish washing and clothes washing multiplies. This has a surprising effect on electricity consumption if you have an electric water heater. Also, clothes dryers will typically run more often in winter months.

5. Outdoor lighting and holiday displays contribute their

share, along with extra baking and cooking during holidays.

6. We all tend to watch more TV in winter, and often leave TVs on as background noise. Today's new large-screen models consume more electricity than conventional televisions.

7. In some households, electric blankets and heating pads are put into service to increase comfort.

So during the heating months or holiday season, consider how any of these factors have affected your monthly bill. Weigh the cost of electricity against the value received, and make adjustments as needed.

Estate planning: The greatest gift of all

By Doreen Friel

Remember the famous saying, "Nothing is certain except for death and taxes"? While many argue over whether Ben Franklin, Mark Twain, or someone else actually said it, one thing is clear—death and taxes are inevitable. And that's why, for countless years, people have engaged in estate planning.

Once considered a tool only for the rich, estate planning historically revolves around the creation of a will. But today, it involves much more than that. Begin thinking about the following as you consider your own estate plan.

1. Consider your assets. Estate planning documents, such as a will and trust, let you legally transfer your assets to loved ones more quickly and easily upon your death. They can also help save money on estate taxes by naming beneficiaries for certain assets that are not distributed through your will or trust, such as your retirement plan assets, annuities, and life insurance policies.

2. Consider your family obligations. If you are a parent or legal guardian, estate planning can designate guardians of your minor children in the event of your death, which can help to avoid court battles.

3. Consider the "what ifs." The future is unknown, but certain steps can provide protection nonetheless. Life insurance, which goes to a beneficiary in the event of your death, and long-term care insurance, which

can help protect your assets should you need long-term care services at home or in a nursing home, are two examples.

Also, what if you were incapacitated and could not make your own medical or financial decisions? A durable power of attorney gives someone close to you the ability to handle your finances if you are unable. And a living will communicates what your wishes would be regarding medical care if you do become incapacitated.

4. Gather the troops. You should consider consulting several individuals as you create your estate plan, including your attorney, life insurance representative and/or financial professional, and accountant or tax adviser.

5. Communicate your plans.

At the very least, the individual whom you have designated as your executor should know how to reach your attorney in the event of your death or disability. Informing your loved ones of your wishes can ensure there are no surprises later.

6. Update your plan regularly. Life is all about change. So at times, changes might need to be made to your estate plan, such as updating your will or changing a beneficiary. Be sure to review your estate plan at least once a year.

Estate planning may sound expensive, but think about it: The price you pay today could save your loved ones substantial time, stress, and money when you are no longer here. What better gift could you give them?

Informational Web Sites

The following is a list of Web sites that can provide information and education in reference to electrical safety and energy conservation. These Web sites are listed as links on Red Lake Electric Cooperative's Web site at www.redlakeelectric.com.

- Electrical Safety Foundation International: www.esfi.org
- Alliance to Save Energy: www.ase.org
- US Environmental Protection Agency: www.epa.gov/greenhomes
- Energy Star: www.energystar.gov
- Minnesota Safety Council: www.minnesotasafetycouncil.org
- Safe Electricity: www.safeelectricity.org
- Lighting Controls Association: www.aboutlightingcontrols.org
- US Consumer Product Safety Commission: www.cpsc.gov

20th Annual Thief River Falls

GUNSHOW
ALSO BASEBALL CARDS & COINS

At The

NATIONAL GUARD ARMORY

FEBRUARY 8 & 9, 2014

SATURDAY 9 A.M. - 5 P.M.

SUNDAY 9 A.M. - 4 P.M.

For reservation, contact Tracey or John Larson

(218)681-6553 • If no answer, leave a message

All tables will be on a first-come, first-serve basis. (100 tables available)

SAVE
AT EVERGREEN
IMPLEMENT!
ON NEW TRACTORS!



\$60,550

5100E Cab 100 hp
MFWD Tractor
with H260 Loader

0% for 60 months oac

OR Get a \$1,500 Cash Bonus!

*Offer ends Feb. 3, 2014. Subject to approved installment credit with John Deere Financial and for agricultural-use only. Some restrictions apply and other special rates and terms may be available. Offer is available only on new equipment.

\$47,050

5085E Open Station
MFWD 85 hp Tractor
with H260 Loader



Like a goalie . . .

We protect what matters most.
Auto-Owners Insurance and your local independent insurance agency have been insuring hockey fans since 1916.

For all your life, home, car and business insurance needs call us today!

Red Lake County Insurance

Red Lake Falls, MN

218-253-2177 • rlci@gvtel.com

www.redlakecountyinsurance.com

Auto-Owners Insurance

12697 (09-11)



Another Great Choice
for **Good Health**



Carly Haas, PA-C is available for patients of all ages at RiverView Clinic-Red Lake Falls.

For appointments, call
218.253.4606.



RIVERVIEW HEALTH

Exceptional People. Exceptional Care.

Park Place Mall, Red Lake Falls

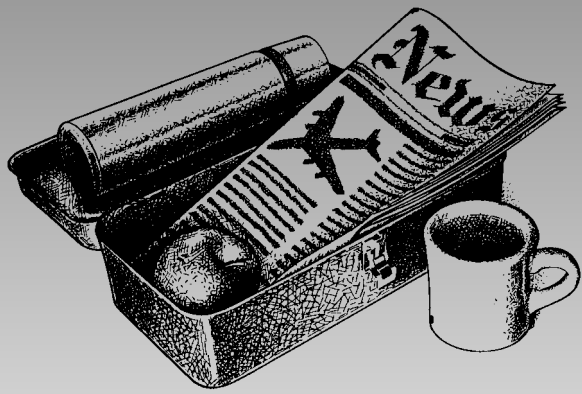
EVERGREEN
IMPLEMENT COMPANY



JOHN DEERE

WARREN - 218-745-4516 THIEF RIVER FALLS - 218-681-1131
MAHNOMEN - 218-935-2241 BAUDETTE - 218-634-2231

www.evergreenimplement.com



Your key to buy, sell or trade anything is the CLASSIFIEDS

The members are invited to use this FREE WANT AD service.

If you have anything to trade or sell, just drop a card to Red Lake Electric Cooperative, Box 430, Red Lake Falls, MN 56750.

Real Estate

Motivated Seller

#3821 - You've waited long enough to make that move you have been talking about. The time is right, the location is right, and the price is right! A peaceful setting is complemented by this newly improved 1-1/4 story, 3 bedroom home with cozy open porch. Newer double detached garage and additional outbuildings too! Call today to set up a time to see this one.

SOLLIE REALTY
Fosston, MN
218-435-1525
www.sollie.net

www.sollie.net www.sollie.net www.sollie.net www.sollie.net

DON'S MACHINE SHOP
ASE CERTIFIED REBUILDERS
ALL GAS AND DIESEL ENGINES

- Automotive •Industrial
- Marine •Agricultural
- High Performance
- Vintage Auto
- Heavy Duty Diesel

CALL FOR ESTIMATE!
INSTALLATION AVAILABLE

FOSSSTON, MN
218-435-6379 or
1-800-448-1518

PRICE EXAMPLES:
•GM 350 \$1,315 - \$1,419
•GM 6.5 Diesel with new block \$5,330
•Ford 7.3 Diesel Powerstroke \$4,200

All prices are with exchange on a rebuildable core.

SCHAFER ELECTRIC

BRIAN SCHAFER
218-289-5430
CELLULAR

MIKE SCHAFER
218-289-5431
CELLULAR

16483 120th Avenue SW
Red Lake Falls, Minnesota 56750
Office 218-253-2497

COMMERCIAL TRENCHING RESIDENTIAL FARM

Carpet ETC. of St. Hilaire, MN

Flooring to Fit Every Lifestyle
Carpet, Vinyl, Ceramic, Laminate

Quality Flooring at a price you can afford.

310 Broadway • St. Hilaire, MN • (218) 964-5555 • M - F 9-5:30 & Sat 9-3 • Anytime By Appointment

LUMBER AND Building Supplies

ASK ABOUT OUR COMPLETE BUILDING PLANS SERVICES!
We're glad to help you with any building problem you may have.

Oklee Lumber, Inc.
(218) 796-5131

Late Model Auto Parts
-National Parts Locator-

Toll Free 1-888-560-5321
Bus: 218-964-5321

WE BUY PARTS CARS!

20 Bakers St., St. Hilaire, MN
Jeff Brouse & Brian Bugge, Owners
B & B Auto Recycling, Inc.

KM Transmission And Repair
Quality • Experience
Dependability • Honesty

Fair Prices
Its all just that simple. Keith Moen

Mon. - Fri. 8:00 am to 5:00 pm
Sat. by appointment

(218) 681-4250
616 Davis Ave. N, Thief River Falls

We Buy Cars and Car Bodies **We Sell Welding Supplies** **Roll-Off Boxes Available**

We Buy Aluminum Cans **We Sell New Steel - Structural and Sheet** **We Buy Scrap Iron and Metals**

Evans Scrap & Steel, Inc.
218-681-3488 • Toll Free 1-800-906-3488
13203 190th St. N.E. • Thief River Falls, MN

Winter Hours:
7:30 - 4:30
Monday-Friday

Electrical Contractor Shop: (218) 253-4123 Home: (218) 253-4127

KEN'S ELECTRIC, INC.
Red Lake Falls, Minnesota 56750
"We Service Our Work"

Contact Us For All Your Electrical Needs!

Allen Remick - Cell: (218) 689-0313
Jason Knott - Cell: (218) 289-5104

GOPHER STATE ONE CALL
Call before digging!
It's the law!
1-800-252-1166

HELP! HELP! HELP!
"My basement is wet! Who do I call?"

RADNIECKI'S Classic Cleaner
Greg

- ☑ Carpets
- ☑ Upholstery
- ☑ Ceilings & Walls
- ☑ Emergency Water & Smoke Damage
- ☑ Pet Stains
- ☑ Odor Control
- ☑ Air Duct Cleaning

Call: (218) 681-7679

And for all your cleaning needs call 218-681-7679

Midwest Roofing
Residential and Commercial

Licensed • Bonded • Insured
FREE ESTIMATES

20061 Center St E
Thief River Falls, MN 56701

(218) 681-3879
(218) 686-4475

LOWER UTILITY BILLS!

Install a Goodman® brand Gas Furnace and you can lower your utility bill every month...year after year.

Goodman
Air Conditioning & Heating

WILCOX PLUMBING & HEATING

Red Lake Falls
218-253-4347

BILL H. MOSER
MASTER PLUMBER
PM058011

BILL J. MOSER
MASTER PLUMBER
CFR 089400285
PM061208

JASON JOHNSRUD
MASTER PLUMBER
PM064717

Thank goodness for Goodman®

123 4 Sale Realty
www.1234sale.com 218-681-4321

Kittson County
5 parcels of Hunting/Farm Land CRP over 950 acres
Take your pick of any or all. Potential multiple usage.
Priced to fit your needs, starting at
\$675/acre

Erskine
22379 380th St S - Beautiful Manor on almost 12 acres on Lake Bradley
Priced to sell @ **\$1,499,000**
37854 210th Ave SE - Rare opportunity to buy a stately home overlooking Little Lake Sarah
A must see @ this price **\$299,000**

Anne E. Nevin Broker/Owner 218-681-4321/612-702-3324

Joe McMullen AGENT 218-689-5760
Jerry Hoffman AGENT 218-686-0224
Sherri Owens AGENT 218-416-0904

www.1234sale.com
Let us help get you into the perfect property for all your needs. We Co-Broke and we represent both sellers and buyers! We specialize in short sales!

TR SALVAGE INC.

702 Dawn Ave.
Thief River Falls, MN 56701
218-681-8221 • 1-800-950-9917

Email: sales@trsalvage.com • Website: www.trsalvage.com

NEW AND USED FARM EQUIPMENT PARTS

Red Lake Electric Cooperative

Want Ad Order Form

Use this handy form to submit your want ads.
PLEASE PRINT.

Mail or bring your ads to the RLEC office by the tenth of the month. Commercial ads are 10¢ per word with a minimum charge of \$4 per insertion.

Member want ads are FREE. One want ad per member per month.

Please PRINT . . .

Your Name, Address and Phone Number. Mail with your power bill payment, if you prefer, or fax to 218-253-2630.

SUBSCRIBE TO GAZETTE

Red Lake Falls

Save at least \$23 annually over the newsstand price!

To subscribe just clip and fill out this form and bring it to the Gazette office at 105 Main Avenue in Red Lake Falls or mail to: The Gazette, PO Box 370, Red Lake Falls, MN 56750.

THE GAZETTE SUBSCRIPTION RATES . . .

In Red Lake County, \$29 a year In Minnesota, \$35 a year Out of state, \$39 a year

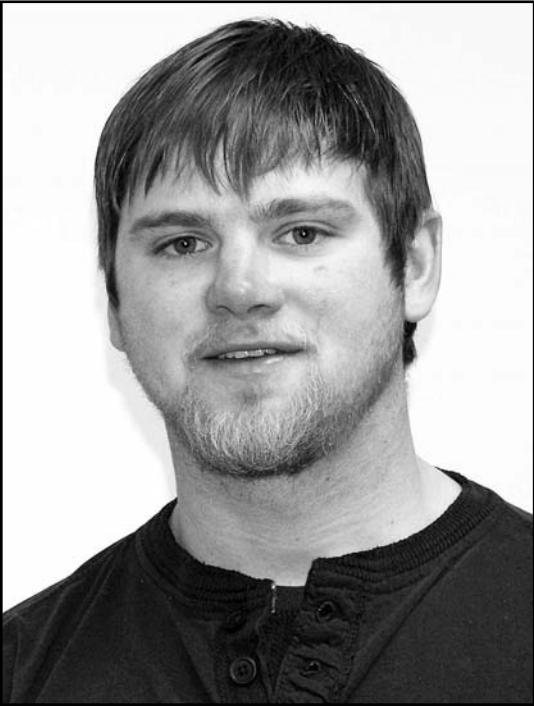
Enclosed is a check for \$ _____ Send the Gazette to . . .

NAME _____

ADDRESS _____

CITY _____ STATE _____ ZIP _____

AFTER-HOURS OUTAGE PHONE 218-253-2200



LaCrosse and Knott recognized for years of service to RLEC

Each year employees of Red Lake Electric Cooperative, who reach specific milestones of service, are recognized for their years of service. Recently Melanie LaCrosse and Brett Knott were each recognized for five years of service. They both began employment with the Cooperative in 2008. LaCrosse serves as an accounting assistant and Knott works as a lineman.

For sale on bids

Red Lake Electric Cooperative is offering the pictured truck for sale on bids. It is a 2000 Ford 750 XLT 4X4 with an 6 speed manual high-low transmission. The truck is equipped with a Cat diesel engine, AC, front hydraulic winch and rear hydraulic outlets. It has a 1980's Altec digger derrick with bucket and boom winch. It has 130,906 miles and 13,186 hours.

The unit can be viewed at the Cooperative's headquarters in Red Lake Falls, Monday through Friday, 8:00 a.m. to 4:00 p.m. **Sealed bids must be submitted by February 3, 2014, by 10:00 a.m.**

The Cooperative reserves the right to reject any and all bids.



2000 Ford 750 XLT 4X4

The All-New 2014 FourTrax Foreman NEVER SETTLE FOR SECOND BEST.



BEST ON EARTH™



www.rvsports.com • 218-681-1007
Hours: Mon. - Fri. 9-5:30 • Sat. 9-1

1412 3rd St. W • Thief River Falls • FAX: (218) 681-9420 • 1-800-926-5403

powersports.honda.com UTILITY ATVs ARE RECOMMENDED ONLY FOR RIDERS 16 YEARS OF AGE AND OLDER. ATVs CAN BE HAZARDOUS TO OPERATE. FOR YOUR SAFETY, BE RESPONSIBLE. READ THE OWNER'S MANUAL. ALWAYS WEAR A HELMET, EYE PROTECTION AND PROTECTIVE CLOTHING. BE CAREFUL ON DIFFICULT TERRAIN. ALL ATV RIDERS SHOULD TAKE A TRAINING COURSE (FREE FOR NEW BUYERS ASK YOUR DEALER OR CALL ASIA AT 800-867-2887). NEVER RIDE UNDER THE INFLUENCE OF DRUGS OR ALCOHOL, ON PAVED SURFACES, ON PUBLIC ROADS, WITH PASSENGERS, OR AT EXCESSIVE SPEEDS. NO STUNT RIDING. RESPECT THE ENVIRONMENT WHEN RIDING. FourTrax®, Foreman® and Best On Earth® are registered trademarks of Honda Motor Co., Ltd. ©2013 American Honda Motor Co., Inc. (09/13)



Red Lake Electric Cooperative, Inc.

One of the Minnkota Power Systems

Things you should know about your electric service

BILLINGS AND COLLECTION

You will receive your energy bill on or near the 20th of each month.

Payment of your monthly energy bill is due on the 20th of the month. You may pay your bill in person at RLEC during office hours, use the 24-hour drive-up drop box located next to the RLEC office, by Auto Pay, or by mail. Payment must be in the office, drop box, Auto Pay, or in the mail, as evidenced by the postmark, by the 5th day of the following month to avoid a late payment charge. A 1 1/2% monthly late payment charge will be computed on delinquent energy bills, the minimum late payment charge will be \$1.00.

If your payment is not received by the 15th of the month, a final notice of disconnection statement will be included on your following bill. The final notice statement will notify you when your electric service will be disconnected if the delinquent amount remains unpaid. If an employee is sent to disconnect your electric service, a \$60 collection fee will be charged to your account, even if you pay the collector.

To have a disconnected service reconnect, all amounts owing, a \$60 reconnection fee, and a security deposit must be paid. If the service must be reconnected after normal working hours, a \$120 reconnection fee must be paid.

BAD CHECKS

A \$15 charge will be levied each time a check is returned because of nonsufficient funds, account being closed or payment stopped.

OUTAGES

In case your electricity goes out, please do the following:

1. Check your fuses or breakers at the yard pole or meter pedestal.
2. Call your neighbor to see if they are out of electricity also.
3. Call the RLEC office (218-253-2168 or 1-800-245-6068) during working hours or 218-253-2200 after hours. We will accept collect calls for outages only.

METER TESTS

RLEC has a schedule in place to have its meters periodically tested for accuracy. Results from these tests show that meters generally slow down with age; however, if you think that your meter is recording too much usage, RLEC will test it for accuracy. You must pay a test fee in advance of the test. If the meter test shows that the meter was inaccurate, the test fee will be refunded to you.

STOPPED METERS

If you find your meter has stopped and you are using electricity, please contact the office immediately so we can replace it. Average consumption will be billed to the member for the time the meter was stopped so there is no advantage in not reporting a stopped meter.

METER READINGS

An automated meter reading system is utilized to obtain monthly meter readings. Although the system is normally reliable, there is always a chance that the correct reading has not been transmitted to the office for billing. Customers should periodically read their meter and compare it to the reading on the billing statement. If the actual reading is not close to the billing statement reading, please call the office.

GENERAL SERVICE RATES

Facilities charge variable \$27 to \$35 month
April-December 9.5¢ Kwh
January-March 9.9¢ Kwh

Multiphase users add \$22/month cost of service charge.

Standby, \$12/month (meter disconnected but the power line retained; standby is not available on services larger than 15 KVA transformer capacity).

Security light: high pressure sodium, \$8/month; mercury vapor, \$9/month; water heater flat credit, \$7/month (January-April billing); off-peak equipment charge, \$5.50/month per heat meter; off-peak energy rate: 5.5¢/kWh long-term control, 7.5¢/kWh short-term control.

AUTO PAY OFFERED BY RLEC

Red Lake Electric Cooperative is pleased to offer you Auto Pay. Now you can have your monthly energy bill paid automatically from your checking or savings account. You can receive the Auto Pay service by completing the Auto Pay sign-up sheet and returning it to Red Lake Electric Cooperative.

The Auto Pay service is free of charge. Not only is this service free, you will eliminate the expense of writing a check, postage to mail your payment and no more late payment penalties because your bill will be paid on time, every month, for you.

Your payment will be automatically made for you on the 5th of each month. If the 5th

falls on a weekend or holiday, the payment will be made on the next business day. You will continue to receive your monthly energy bill as you have in the past, indicating the amount that will be withdrawn from your bank account. The proof of your payment will appear on your bank statement and your next month's energy bill statement.

Continue to pay your monthly bill until you are notified on your bill that the Auto Pay has been set up for you.

If you have any questions about the Auto Pay please call RLEC at 800-245-6068 or 218-253-2168.

AUTO PAY SIGN-UP SHEET

I authorize Red Lake Electric Cooperative (RLEC) and the bank listed below to initiate variable entries to my checking or savings account. This authorization remains in effect until I notify RLEC in writing to cancel it in such time as to allow RLEC to act on it.

RLEC ELECTRIC ACCOUNT #

NAME (PRINT)

ADDRESS

TELEPHONE #

NAME OF FINANCIAL INSTITUTION

CHECKING ACCOUNT #

SAVINGS ACCOUNT #

SIGN HERE TO AUTHORIZE

Please return this authorization form with a blank, voided check to:
Red Lake Electric Cooperative, P.O. Box 430, Red Lake Falls, MN 56750



Red Lake Electric Cooperative, Inc.

One of the Minnkota Power Systems

Phone 218-253-2168
Toll-free 1-800-245-6068
Fax 218-253-2630
After-hour outage 218-253-2200
Office hours Monday-Friday, 8:00-4:30
E-mail: redlake@minnkota.com
Web site www.redlakeelectric.com



Call Before You Dig - Gopher State One Call • 1-800-252-1166

P. O. Box 430 • 412 International Drive SW • Red Lake Falls, MN 56750-0430

GOPHER STATE ONE CALL

Call before digging! It's the law!

1-800-252-1166