



# Volts and Jolts

Published monthly for the members of  
**RED LAKE ELECTRIC COOPERATIVE, Inc.**

*One of the Minnkota Power Systems*

**SERVING THE FOUR-COUNTY AREA OF MARSHALL, PENNINGTON, RED LAKE AND POLK**

VOL. 48 – NO. 5

RED LAKE FALLS (RED LAKE COUNTY), MINNESOTA 56750

FEBRUARY 2013

## Wavra's service end with Red Lake Electric

"Employment at Red Lake Electric (RLE) was a great opportunity and it provided me with a great career, building lasting friendships with fellow employees," explained Mike Wavra. He stated this as he ended his employment with the Cooperative on February 1, after more than 32 years.

Wavra began at RLE in September of 1980 as a groundman. The next summer he started his four year apprenticeship working to become a journeyman lineman. After several years as a journeyman he was promoted to a lead lineman, a position he held until March of 2012 when he was promoted to a crew foreman. Wavra served in this position for the past year.

When reflecting on the past, Wavra recalled some experiences that happened during storms. "LeRoy Marcotte, Virgil Patnode, Tim Carriere and I had been dispatched to the Oklee area to put up a line following a storm. We had the line up and we were sitting in the trucks as we had called into the office to say the line was on. The wind came up, the trucks began to rock and after a tornado passed by we could see the line was all

down again", said Wavra.

Another time he was on his hooks on a pole north of Thief River Falls near Steiner Hall following a thunderstorm. "We thought the storm had passed so Roger Valley grounded out the line before I climbed the pole", recalled Wavra. "While I was on the pole, lightning hit the wire twice, traveling toward the pole and being bled off by the ground cable. It was a [flashing experience] I will always remember."

The team effort with other utilities helping to restore power following major storms was always appreciated by Wavra. This was true whether in RLE service area or in the area of another cooperative.

Wavra and his wife Cindi live along the Red Lake River just east of Thief River Falls. Cindi is employed at Digi-Key Corporation. They are members of St. Bernard's Catholic Church of Thief River Falls and Mike is a member of the Knights of Columbus.

Their family includes daughter Amanda, her husband Chad and their daughter Elianna of Montrose, MN. It also includes son Aaron, his wife Rachel, their children Josh, Sam and

Annabell and daughter Beth all of Thief River Falls.

For those that know Mike you know he will not sit still. He is an avid hunter and fisherman which will take up some of his time. He also plans to do handy man work and will purchase and remodel older homes making them attractive for resale.

"The Cooperative started with post WWII veterans as linemen," said Wavra. "They built the system and over the years we have maintained and/or rebuilt it."

"The Cooperative members were great to work with and very understanding", said Wavra. "I have always felt that you (an employee) were representative of the Cooperative whether on the job or off."

Wavra's words of advice for the remaining and younger linemen were, "remember to check and recheck so as to always be safe. It is a team effort."

"My thanks to the Cooperative members I worked for and the Cooperative employees I worked with" explained Wavra. "It was a gratifying experience."

## Operation Round Up® grant applications due March 7

Organizations involved in community projects and charities are encouraged to apply for funds from Operation Round Up at this time. Completed grant applications are due in the Red Lake Electric Cooperative (RLEC) office by March 7.

Operation Round Up is a program adopted by RLEC, headquartered in Red Lake Falls. Members choosing to "round up" their monthly electric bill payment provide funds for this effort. More than 91 percent of RLEC members now choose to contribute pennies each month to enhance their communities.

Funds will be donated primarily to nonprofit organizations to help fund specific projects or programs. Since the program began in 1993, \$399 thousand has been granted to community organizations and charities. Money is donated for the betterment (1103003.01 Lynn H. Hanson) of the community within the outside service area boundaries of RLEC.

The Red Lake Electric Trust



Board of Directors determines grants. Board members are Van Swanson, Thief River Falls; Patty Mickelson, Oklee; Randy Knutson, Newfolden; Roger Johannek and Bonnie Christians, Crookston.

To apply for Operation Round Up grants, organizations should contact the RLEC office in Red Lake Falls at 218-253-2168 or 800-245-6068. A short application must be completed and submitted along with a financial statement from the organization. The grant application form is available on the Cooperative's Web site at [www.redlakeelectric.com](http://www.redlakeelectric.com).

For more information contact Roger Johannek, general manager of RLEC, at 218-253-2168 or 800-245-6068.

### In this month's *Volts and Jolts*

**Page 2**  
Manager's Comments

Report from the Office  
*Capital Credits*

**Page 3**  
Recipe Corner  
From the Mail Bag

**Page 4**  
Feature of the Month  
*Countryside Grill*

**Page 5**  
District 3 and 6 meeting pictures

**Page 6**  
District 6 and 9 meeting pictures  
*Take steps to prevent electric fires*  
*Unity Bank teamed up with Kinetic Leasing, Inc*



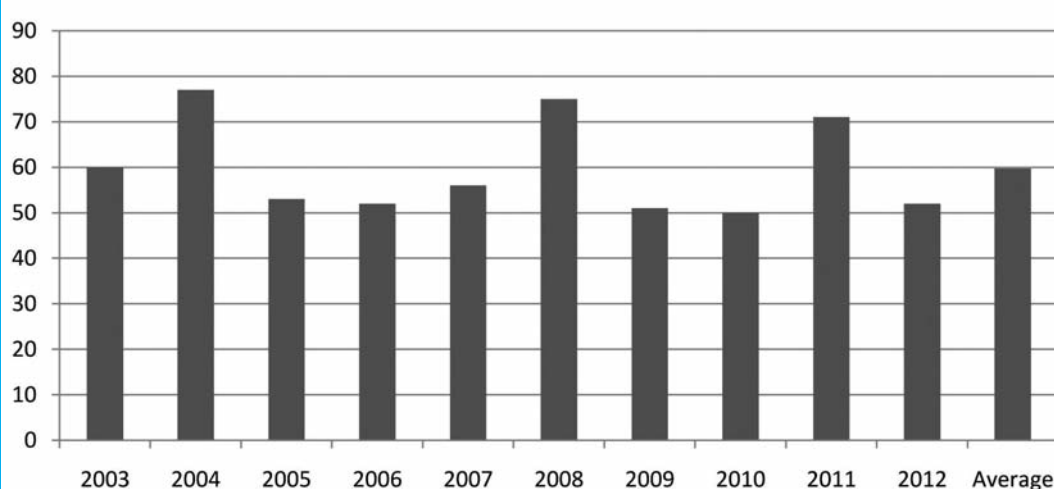
Mike Wavra, left, worked as part of Red Lake Electric Cooperative's line department for over 32 years. He was recognized for his years of service by Roger Johannek, manager.

### QUICK TAKES

A look at some statistics from your Red Lake Electric Cooperative

By the end of 2012, the Electric Utility Plant of Red Lake Electric Cooperative has grown to \$28.3 million; an increase of \$1.1 million from 2011. This is the value of the power line distribution system in place that delivers R.L.E.C. members their electric energy. The major increases in electric plant this past year were: 1) Underground cable 2) Line transformers and 3) Pole replacements. Also included in the cost of utility plant is new services constructed. The graph below shows the new electric service construction activity over the past 10 years.

#### New Electric Services Constructed



## District meetings held in January

Three district meetings were held within Red Lake Electric Cooperative's service area the last week of January. Topics reviewed at the meetings included; 2012 review, blink problems, rate outlook, EPA challenges, on-line bill pay and review and the early years of the Cooperative.

In his manager's report, Roger Johannek discussed current year operations and what Minnkota and RLEC are doing to help reduce the occurrence of line blinks. Johannek pointed out that retail rates have stabilized and discussed factors that are impacting the cost of wholesale power, how RLEC has kept distribution costs from increasing and the impact that environmental regulations and other legislation has had on providing service to the membership.

In December of 2012 the Cooperative implemented a revised billing statement with the printing being contracted with an outside firm. Accountant Shirley Bregier stated in her report that with this change the Cooperative will soon be able to offer on-line billing and on-line review of one's (3636003.09 Theodore Johnson) electric account. Additional information will appear in future issues of the Volts and Jolts.

With 2013 being the 75th anniversary of the Cooperative

Kevin Reich, member services manager, shared some stories and happenings from the early years of the Cooperative. One big contrast from today to 70 years ago is the time frame to get a new service constructed. Today, often a new service will be built within three to four weeks but in the early days prospective members would patiently wait months or years.

The District 3 meeting was held the afternoon of January 28 at the Newfolden Community Center in Newfolden. Incumbent director, Colette Kujava, Newfolden, was unanimously elected as the district director candidate.

The evening of January 28

the District 6 meeting was held at the Terrebonne Community Hall in Terrebonne. Randy Versdahl, Red Lake Falls, incumbent director, was unanimously elected as the director candidate.

On the evening of January 29 the District 9 meeting was held at Black River Lutheran Church rural Red Lake Falls. Incumbent director, Peter Mosbeck, Red Lake Falls, was unanimously elected as the director candidate of the district.

A total of 105 members and friends attended the three meetings. Door prizes were awarded and lunch was provided at each of the meetings.



Attendees totalled 45 at Red Lake Cooperative's District 3 meeting held January 28. The meeting was held in the Newfolden Community Center. Additional district meeting pictures appear on page 5 and 6.

## Official Notice of Annual Meeting

All members of Red Lake Electric Cooperative, Inc. are hereby notified of its annual meeting. The annual meeting will take place at 10:30 a.m. Wednesday, March 27, 2013, at the Ralph Engelstad Arena in Thief River Falls.

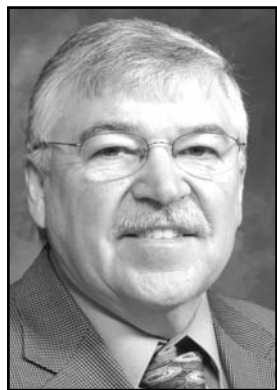
The meeting agenda includes year 2012 in review, financial reports and election of directors. Door prizes will be awarded and lunch will be served.

All members are encouraged to attend.

/s/ Mark Hanson, Secretary







## Manager's Comments

by Roger Johanneck



## Minnesota legislature explores topics that may impact electric bills

Each year in February or March, our statewide association, the Minnesota Rural Electric Association (MREA) holds its annual meeting in St. Paul. For the past five years I have attended this meeting along with one or two directors from this cooperative. A good share of the annual meeting is devoted to hearing legislators talk about issues going on at the statewide level and from other presenters on topics in our industry. There is also a time set aside for attendees to visit the state capital building and visit with our area representatives on topics that may surface in the legislature. Instead of recreating the wheel this month about what those issues the Minnesota legislature may explore this session, I have included that list of possibilities covered in an article already written by MREA's Joel Johnson, Director of Government Affairs.

The 2013 Minnesota Legislative session with a Democratic governor and majorities in both the House and Senate could impact your electric bills.

As a co-op member-owner, we want to keep you informed about the topics that may affect your electric rates.

**Net Metering/Distributed Generation** - The Department of Energy Resources has worked for 18 months to modernize the state's net metering and distributed generation policies (connection of customer-owned wind and solar). The Minnesota Rural Electric Association (MREA) has worked, with cooperatives across the state to assemble our own unified approach to any proposed changes to net metering. The result has been a set of principles, which guide our approach. Electric cooperatives have fundamentally changed the debate over net metering and

distributed generation, focusing much of the discussion on costs and the amount of subsidization occurring under existing policies.

- Minnesota's current net metering laws are unsustainable.

- They allow wind/solar customers to avoid paying for the infrastructure (power lines, substations, etc ...) that allows them to self-generate, distribute their excess generation to others and provides them backup electricity when the sun isn't shining or the wind isn't blowing.

- These significant costs are shifted onto their neighbors.

At a typical rural co-op a net-metered account shifts more than \$1,000 in infrastructure costs onto others. Because cooperatives have more lines and infrastructure and fewer members per mile of line than other utilities, this is of particular concern to co-ops.

- Net metering encourages over-sizing of wind/solar, which floods the system with unnecessary, expensive electricity. As more small distributed generation comes onto the grid, the impact on rates increases exponentially because we have fewer members paying for the infrastructure with more unnecessary and expensive electricity.

- Co-ops support changes that will make distributed generation fair for all of our members - avoid cost shifting and require all members to pay for the services they use - and ensure the long-term economic viability of the grid.

**Stray voltage** - Minnesota currently leads the nation in the number of stray voltage complaints in the court system. In nearly all of these cases, the cooperatives involved have repeatedly visited the farm site, but (2233003.05 Monty Johnson) have been unable to find any measurable stray voltage. We believe the state needs to establish standards for meas-

uring and mitigating legitimate stray voltage complaints - either through legislation or through a Public Utilities Commission ruling - as a way to help dairy farmers and avoid costly litigation. The standard would make utilities accountable if they didn't respond to complaints properly, but also protect them from frivolous complaints.

**Sales Tax on Contributions in Aid to Construction** - As member-owned cooperative organizations, electric cooperatives have always asked new members to help pay for the construction or expansion of electric lines. In fact, financial participation is one of the Seven Cooperative Principles that guide our operations. This has often taken the form of Contributions in Aid to Construction. Until recently, these contributions were not subject to Minnesota sales tax. We continue to believe that sales tax should not be added to these contributions. We will remind policy makers that generating revenue through electric bills is extremely regressive for residents and makes it harder for Minnesota businesses to compete.

**Renewable Energy Mandates and Carve-Outs** - Meeting Minnesota's 25x25 Renewable Energy Standard has already been extremely costly for cooperative members. Adding more renewable energy mandates or solar carve-outs (mandates) increases those costs.

New technologies, expanded natural gas resources, rising prices and growing environmental regulations are changing the ways we produce, distribute and use electricity. The co-op members' needs remain in the forefront and we will continue to deliver safe, abundant, reliable and affordable electricity.



## Report from the Office

by Shirley Bregier

## Capital credits

Red Lake Electric is busy getting ready for our 75th Annual Meeting. The first thing I think of when we start planning for this meeting is how nice it is to visit with all our members who take the time to come to the annual meeting. It is a great place to receive information about your cooperative and to visit with friends and neighbors.

One of the many things that we do in preparing for the meeting is to assign the Cooperative margins and get ready to retire capital credits to some former and current members. With the audit of our 2012 financial records complete and the approval of your board of directors, RLEC will be assigning our margins of \$774,944 to members who paid an electric bill during the year of 2012. Margins are the amount of revenue left over at the end of the business year once all the operating expenses have been accounted for.

The Cooperative has about 4,400 members that will share

these margins. This assignment of capital credits will remain in each members equity account and will be used by the Cooperative to build new or rebuild aging infrastructure, improve capacity and operate the Cooperative.

These capital credits reflect each member's ownership in the cooperative. Your Cooperative has an equity plan in place which guides the board in the annual evaluation of retiring capital credits to the membership. When a payout is approved by the Board of Directors, the oldest capital credits are paid back first. RLEC retires credits on a rotation of approximately 20 years which helps the coop maintain an ideal equity level.

In January your board of directors approved the payment of the balance of capital credits assigned to members in 1995 and 21.6% of the 1996 capital credit assignment for a total of about \$420,000. For those of you that are were a member during those years and still receiving an electric bill from Red

Lake Electric you will receive your payout in the form of a credit on your March electric bill. If you have since moved and no longer receive an electric bill you will receive a check the end of March.

If you were a member in past years and no longer receive an electric bill, please contact our office by phone or e-mail to let us know your current address. If after attempting to locate the holder of the capital credits and we (4411008.01 Gary A. Anderson) are unable to deliver their capital credit check, we will use it to fund scholarships which are awarded to our member's children graduating from high schools within our service area.

Like always, if you have a question or concern please call our office at 1-800-245-6068 or e-mail us at redlake@minnkota.com. Watch for your capital credit payment, enjoy the last days of winter and I hope to see you at the annual meeting on March 27th.

## VOTING DELEGATE CERTIFICATION

Members that are corporations, churches, townships, schools or other government units may vote at the annual meeting. This form designating the voting delegate must be filled out, signed by officers and presented at the annual meeting registration desk or returned with a mail ballot.

The \_\_\_\_\_ has, at an official  
Name of Member  
meeting, designated \_\_\_\_\_  
Name of Delegate  
to represent us at the 2013 annual meeting of the Red Lake Electric Cooperative, Inc.

Attest \_\_\_\_\_  
Chairman or President

Attest \_\_\_\_\_  
Clerk or Secretary

## Director nominations, petitions due Feb. 25

Each year the terms of three of Red Lake Electric Cooperative's (RLEC) directors expire the day of the annual meeting. Members of each of the three districts whose present director's terms will expire March 27 have elected director candidates at the recently held district meetings.

The names of the candidates are Colette Kujava, Newfolden, District 3, Randy Versdal, Red Lake Falls, District 6 and Peter Mosbeck, Red Lake Falls, District 9.

Their names will be placed in nomination at the annual meeting. Any other member within these districts wishing to have their name placed in nomination must do so by petition. The petition is due in the RLEC office

in Red Lake Falls by 10 a.m. Feb. 25.

At least 15 members of the district must sign the petition for the director nominee. The nominee's name will then be placed on the election ballot at the annual meeting March 27 at the

Ralph Engelstad Arena in Thief River Falls.

Petition forms are available at the RLEC office in Red Lake Falls. Contact Roger Johanneck, cooperative manager, at 800-245-6068 or 253-2168 for more information.

## RLEC director qualifications required to be elected/serve

No member shall be eligible to become or remain a director who:

- Is not a member of the Cooperative, receiving electric service at the member's primary residence in the district from which the director is elected.

- Within three years preceding a director candidate's nomi-

nation was an employee of the Cooperative.

- Is or becomes, or at any time during the three (3) years preceding a director candidate's nomination shall have been employed by a labor union, which represents, or has represented, or has endeavored to represent any employees of the Cooperative.

- Is a parent, spouse or cohabitant of any employee of the Cooperative.

- Is a person who is a parent, spouse or cohabitant of an incumbent director who is not up for re-election at that time.

- Is in any way employed by or substantially financially interested in an enterprise competing with the Cooperative or any Cooperative-affiliated business.

- Is or becomes the full-time employee or agent of, or who is or becomes the full-time employer or principal of, another director.

## Mission Statement

It is the mission of Red Lake Electric Cooperative to enhance the quality of life for people of our service area by consistently providing quality electric service and other valued services while holding our employees, our community and our environment in high regard.



Red Lake Electric Cooperative, Inc.

*One of the Minnkota Power Systems*

## RED LAKE ELECTRIC COOPERATIVE, Inc. VOLTS & JOLTS

(USPS 663-400)

Published monthly by the Red Lake Electric Cooperative, Inc., 412 International Drive SW, Red Lake Falls, Minnesota 56750-0430, in the interest of its members and others. Periodical Postage Paid at the U. S. Post Office in Red Lake Falls, Minnesota 56750. POSTMASTER, SEND ADDRESS CHANGES to Volts & Jolts, c/o Red Lake Electric Cooperative, Inc., P. O. Box 430, Red Lake Falls, Minnesota 56750-0430. E-mail: redlake@minnkota.com

### OFFICERS AND DIRECTORS

PRESIDENT ..... Bonnie Christians  
VICE PRESIDENT ..... Robert Finstad  
SECRETARY-TREASURER ..... Mark Hanson  
DIRECTORS ..... Kelly Lundeen,  
Steven Linder, Peter Mosbeck,  
Colette Kujava, Randy Versdahl,  
Stacy Blawat  
Subscription Rate \$2.50 per year

## NOTICE

Hidden within the text of the articles of this issue of the Volts & Jolts are the names and account numbers of some RLEC members. They will appear within the articles in parenthesis as such (9999999.99 Roger P. Member). If you find your name and account number, clip it out and send it with your next payment. You will be credited with \$5 on your electric bill.



Red Lake Electric Cooperative, Inc.

*One of the Minnkota Power Systems*

## Things you should know about your electric service

### BILLINGS AND COLLECTION

You will receive your energy bill on or near the 20th of each month.

Payment of your monthly energy bill is due on the 20th of the month. You may pay your bill in person at RLEC during office hours, use the 24-hour drive-up drop box located next to the RLEC office, by Auto Pay, or by mail. Payment must be in the office, drop box, Auto Pay, or in the mail, as evidenced by the postmark, by the 5th day of the following month to avoid a late payment charge. A 1 1/2% monthly late payment charge will be computed on delinquent energy bills, the minimum late payment charge will be \$1.00.

If your payment is not received by the 15th of the month, a final notice of disconnection statement will be included on your following bill. The final notice statement will notify you when your electric service will be disconnected if the delinquent amount remains unpaid. If an employee is sent to disconnect your electric service, a \$60 collection fee will be charged to your account, even if you pay the collector.

To have a disconnected service reconnected, all amounts owing, a \$60 reconnection fee, and a security deposit must be paid. If the service must be reconnected after normal working hours, a \$120 reconnection fee must be paid.

### BAD CHECKS

A \$15 charge will be levied each time a check is returned because of nonsufficient funds, account being closed or payment stopped.

### OUTAGES

In case your electricity goes out, please do the following:

1. Check your fuses or breakers at the yard pole or meter pedestal.
2. Call your neighbor to see if they are out of electricity also.
3. Call the RLEC office (218-253-2168 or 1-800-245-6068) during working hours or 218-253-2200 after hours. We will accept collect calls for outages only.

### METER TESTS

RLEC has a schedule in place to have its meters periodically tested for accuracy. Results from these tests show that meters generally slow down with age; however, if you think that your meter is recording too much usage, RLEC will test it for accuracy. You must pay a test fee in advance of the test. If the meter test shows that the meter was inaccurate, the test fee will be refunded to you.

### STOPPED METERS

If you find your meter has stopped and you are using electricity, please contact the office immediately so we can replace it. Average consumption will be billed to the member for the time the meter was stopped so there is no advantage in not reporting a stopped meter.

### METER READINGS

An automated meter reading system is utilized to obtain monthly meter readings. Although the system is normally reliable, there is always a chance that the correct reading has not been transmitted to the office for billing. Customers should periodically read their meter and compare it to the reading on the billing statement. If the actual reading is not close to the billing statement reading, please call the office.

### GENERAL SERVICE RATES

Facilities charge variable \$27 to \$35 month  
April-December ..... 9.5¢ Kwh  
January-March ..... 9.9¢ Kwh  
Multiphase users add \$22/month cost of service charge.

Standby, \$12/month (meter disconnected but the power line retained; standby is not available on services larger than 15 KVA transformer capacity).

Security light: high pressure sodium, \$8/month; mercury vapor, \$9/month; water heater flat credit, \$7/month (January-April billing); off-peak equipment charge, \$5.50/month per heat meter; off-peak energy rate: 5.5¢/kWh long-term control, 7.5¢/kWh short-term control.



# Recipe Corner



### Chicken Provencale

1 Broiler-fryer chicken (3 to 4 pounds), cut up  
1 tablespoon cooking oil  
1-1/2 cups chopped onion  
3 garlic cloves, minced  
2 cans (15-1/2 ounces each) great northern beans, rinsed and drained  
1 can (29 ounces) diced tomatoes, undrained  
3 medium carrots, sliced 1/4 inch thick  
1 tablespoon instant chicken bouillon  
1 teaspoon dried thyme  
1/2 teaspoon dried oregano  
1/2 teaspoon pepper  
In a skillet, brown the chicken in oil; remove and set aside. Saute onion and garlic in drippings until tender. Stir in remaining ingredients. Spoon into a 3-qt. baking dish; arrange chicken pieces on top. Cover and bake at 350° for 65-75 minutes or until chicken juices run clear. **Yield:** 4 servings.

### Turkey Meat Loaf

2 pounds ground turkey breast  
1 cup quick-cooking oats  
1 medium onion, chopped  
1/2 cup shredded carrot  
1/2 cup milk  
1 egg or egg substitute equivalent  
2 tablespoons ketchup  
1 teaspoon garlic powder  
1/4 teaspoon pepper  
**Topping:**  
1/4 cup Ketchup  
1/4 cup quick-cooking oats  
In a large bowl, combine the first nine ingredients; mix well. Press into a 9-in. x 5-in. x 3-in. loaf pan that has been coated with nonstick cooking spray. Combine topping ingredients; spread over loaf. Bake, uncovered at 350° for 65 minutes or until juices run clear. **Yield:** 10 servings. **Diabetic Exchanges:** One serving (prepared with skim milk and egg substitute) equals 3 very lean meat, 1 starch; also, 154 calories, 186 mg sodium, 27mg cholesterol, 11 gm carbohydrate, 23 gm protein, 2 gm fat.

### Spiced Pork Chops

1/4 cup all-purpose flour  
1/2 teaspoon ground mustard  
1/4 teaspoon pepper  
1/8 teaspoon ground allspice  
4 pork loins chops(1-1/2 inches thick)  
2 tablespoons cooking oil  
1-1/2 cups apple cider  
2 tablespoons brown sugar  
2 medium tart apples, peeled and sliced  
1/3 cup raisins  
1/2 teaspoon ground cinnamon  
Hot buttered noodles, optional  
1/2 teaspoon caraway seeds, optional  
Combine the flour, mustard, pepper and allspice; dredge the pork chops, reserving remaining flour mixture. In a skillet, brown chops in oil. Remove to a 2-qt. baking dish. To the drippings, add cider, brown sugar and remaining flour mixture; cook and stir until bubbly. Arrange apples and raisins around chops; sprinkle with cinnamon. Pour the cider mixture over all. Cover and bake at 350° for 70 minutes or until pork is no longer pink. If desired, combine noodles and caraway seeds; serve with pork. **Yield:** 4 servings.

### Favorite Molasses Cookies

3/4 cup butter or margarine, softened  
1 cup sugar  
1/4 cup molasses  
1 egg  
2 cups all-purpose flour  
2 teaspoons baking powder  
1/2 teaspoon baking soda  
1 teaspoon ground cinnamon  
1/2 teaspoon ground cloves  
1/2 ground ginger  
In a mixing bowl, cream butter and sugar. Beat in molasses and egg. Combine dry ingredients; gradually add to creamed mixture. Chill for 1 hour or until firm. Shape into 1-in. balls; place on greased baking sheets. Press flat with a glass dipped in sugar. Bake at 375° for 8-10 minutes or until lightly browned. Cool on wire racks. **Yield:** about 6 dozen.

### Low-Fat Oatmeal Cookies

1 cup all-purpose flour  
1 cup quick-cooking oats  
1/2 cup sugar  
1/2 teaspoon baking powder  
1/2 teaspoon baking soda  
1/2 teaspoon salt  
1/2 teaspoon ground cinnamon  
2 egg whites  
1/3 cup corn syrup  
1 teaspoon vanilla extract  
1/3 cup raisins  
In a medium bowl, combine the first 10 ingredients; mix well. Stir in raisins (dough will be stiff). Drop by tablespoonfuls onto baking sheets that have been coated with nonstick cooking spray. Bake at 375° for 8-10 minutes or until lightly browned. **Yield:** 2-1/2 dozen. **Diabetic Exchanges:**One serving (two cookies) equals 1-1/2 starch; also, 102 calories, 138 mg sodium, 0 cholesterol, 24 gm carbohydrate, 2 gm protein, trace fat.

### Peanut Butter Chocolate Chip Cookies

1/2 cup butter or margarine, softened  
1/2 cup sugar  
1/3 cup brown packed brown sugar  
1/2 cup chunky peanut butter  
1 egg  
1 teaspoon vanilla extract  
1 cup all-purpose flour  
1/2 cup old-fashioned oats  
1 teaspoon baking soda  
1/4 teaspoon salt  
1 cup (6 ounces) semisweet chocolate chips  
In a mixing bowl, cream butter and sugars; beat in peanut butter, egg and vanilla. Combine flour, oats, baking soda and salt; stir into the creamed mixture. Stir in the chocolate chips. Drop by rounded tablespoonfuls onto ungreased baking sheets. Bake at 350° for 10-12 minutes or until golden brown. Cool for 1 minute before removing to a wire rack. **Yield:** 2 dozen

### Chocolate Nut Cookies

1 cup butter or margarine, softened  
3/4 cup packed brown sugar  
1/2 cup sugar  
1 egg  
1 teaspoon almond extract  
2 cups all-purpose flour  
1/4 cup baking cocoa  
1 teaspoon baking soda  
1/2 teaspoon salt  
1 cup (6 ounces) vanilla baking chips  
1 cup chopped almonds  
In a mixing bowl, cream butter and sugars. Add egg and extract; mix well. Combine the flour, cocoa, baking soda and salt; add to creamed mixture and mix well. Stir in the chips and nuts. Drop teaspoonfuls onto ungreased baking sheets. Bake at 375° for 7-9 minutes. Cool on pans for 1 minute before removing to wire racks; cool completely. **Yield:** about 5 dozen

### Dear RLE Trust, Inc

On behalf of the Viking Fire and Rescue Department, I wanted to take a moment to sincerely thank you for your commitment to supporting our efforts to raise money for a replacement pumper truck. As you know, securing a replacement pumper is vital to helping the City of Viking and the townships of Viking and New Solum maintain the ISO Certification Standards required by insurance companies when setting premiums on homeowners and property fire policies. Your generous contribution will ensure that our Volunteer Fire Department is fully compliant with all certifications so we may quickly and effectively serve our friends, neighbors, and communities when they need us the most. Thank you again for your support of this important fundraising effort.

Sincerely,  
Warren Worker  
Secretary,  
Viking Volunteer Fire and Rescue

### Dear RLEC,

Thank you so much for the cordless drill that I received at the 4-H awards banquet. I will put it to good use!

Thanks again  
Ethan Peterson  
Penn. Co. 4-H

### Dear RLEC,

Thank you so very much for the beautiful gift I received at the Dist. 3 meeting at the Newfolden Community Center. I was thrilled to receive a George Foreman grill. I love it! Thank you for all your kind services to us as members and the gifts we receive form your generosity.

Sincerely,  
Kathryn Rokke  
Newfolden

### Dear RLEC,

On behalf of the Thief River Falls and Pennington County Safety Camp Committee, I would like to thank the Board of Directors for their continued financial support that they give to our Safety Camp through your Operation Round-up program. Your generosity will continue to be used towards safety education for 120 second and third graders in June of 2013. With financial support from organizations such as yours, it will be possible to once again conduct this camp to teach children the importance of safety that could one day save their lives.

Sincerely,  
Melessa Sletten  
Recreation/Events  
Coordinator  
City of Thief River Falls

### Dear RLEC,

I want to thank REA Electric for the Chef's knife I won at the Newfolden meeting. Also for the interesting program and pictures on the early electric hook ups. I well remember the excitement when my parents got electricity.

Thank you  
Darlene Roseland  
Newfolden

# Join the harvest

The Infinity Wind Energy program was developed by our power supplier, Minnkota Power Cooperative, to bring wind-generated electricity to customers of the associated distribution systems in eastern North Dakota and northwestern Minnesota.

Presently, two 900-kilowatt, commercial-scale wind turbines are producing wind energy for customers enrolled in the program. One turbine is located six miles east of Valley City, N.D., along I-94 and the other, three miles east of Petersburg, N.D., along Highway 2.

To date, hundreds of customers across the region have made the decision to purchase blocks of wind-generated electricity through the Infinity program. Today, we're inviting you to join us, and others, to help harvest the energy of the wind.



**Yes!** I want to join with others and participate in the *Infinity Wind Energy* program.

Please indicate the number of 100 kilowatt-hour <i>Infinity Wind Energy</i> blocks you wish to purchase each month. Each 100 kilowatt-hour <i>Infinity Wind Energy</i> block costs an additional 30¢ per month.	Name _____
<input type="checkbox"/> 1 block (100 kilowatt-hours per month), \$0.30/mo.	Address _____
<input type="checkbox"/> 2 blocks (200 kilowatt-hours per month), \$0.60/mo.	Home phone _____
<input type="checkbox"/> 3 blocks (300 kilowatt-hours per month), \$0.90/mo.	Cell phone _____
<input type="checkbox"/> 4 blocks (400 kilowatt-hours per month), \$1.20/mo.	Account number (located on your bill) _____
<input type="checkbox"/> 5 blocks (500 kilowatt-hours per month), \$1.50/mo.	E-mail address (optional) _____
<input type="checkbox"/> Other – Please specify the total number of 100 kilowatt-hour <i>Infinity Wind Energy</i> blocks you wish to purchase per month _____, \$_____/mo.	Signature _____ Date _____

If you require assistance in determining the number of wind power blocks you wish to purchase, call Red Lake Electric Cooperative at 218-253-2168 or toll-free 1-800-245-6068. We will be happy to assist you.

I understand that my commitment is for one year and will continue on an annual basis until I notify you in writing to end my participation in the Infinity program.

## After-Hours Outage Phone 218-253-2200

## Red Lake Electric Cooperative, Inc. Operating Report MONTHLY COMPARISON

	DECEMBER 2011	DECEMBER 2012
Total Revenue .....	\$1,548,824	\$ 1,381,213
Total Margins .....	\$ 255,521	\$ 121,584
Cost of Power .....	\$1,024,474	\$ 1,004,776
KWH's Purchased .....	14,492,643	14,372,852
Capital Credits Paid to Estates ..\$	1,427	\$ 9,629

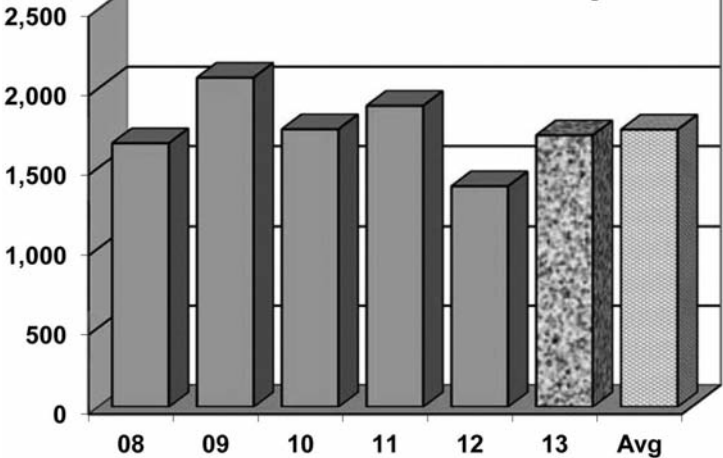
### YEAR TO DATE COMPARISON

	DECEMBER 2011	DECEMBER 2012
Total Revenue .....	\$13,050,576	\$13,220,032
Total Margins .....	\$ 390,731	\$ 774,937
Cost of Power .....	\$9,670,981	\$ 9,613,000
KWH's Purchased .....	140,138,993	130,225,072
New Service Connections .....	71	52
Customers Served .....	5,222	5,230
Capital Credits Paid to Estates ..\$	82,079	\$ 93,032
Miles of Line		
Overhead .....	2,324	2,323
Underground .....	245	249

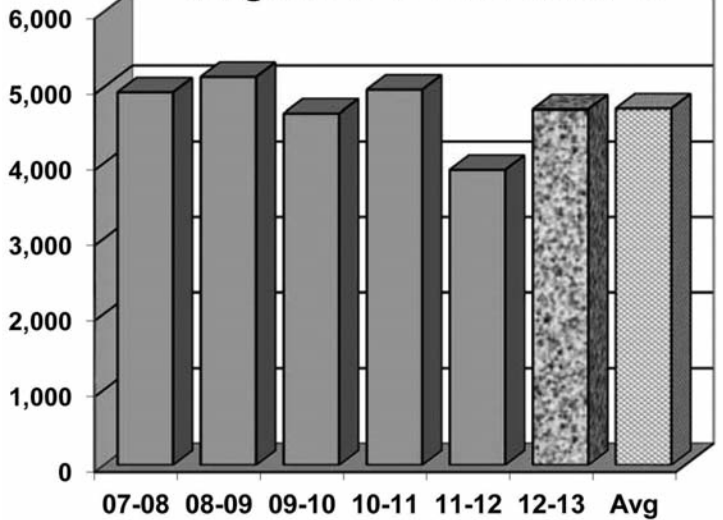
## DEGREE DAYS

To determine degree days, you must calculate the daily mean temperature for the time period you are measuring. Degree day computation is based on the assumption that a building does not require any heat if the outside temperature averages 65 degrees during a 24-hour period. To obtain a degree day figure, the high temperature and the low temperature for the day are added and the total divided by two. That figure is then subtracted from 65. For example, if the high temperature was 30 degrees and the low temperature 10 degrees, the figure would be 30+10=40; 40/2=20; 65-20=45. This would be a 45-degree day. The higher the degree day figure, the more heat required to warm your home.

### DEGREE DAYS December 20 to January 19



### Year To Date August 20 to December 19



## LUMBER AND Building Supplies

ASK ABOUT  
OUR COMPLETE  
BUILDING PLANS  
SERVICES!  
We're glad to help you  
with any building problem  
you may have.

**Oklee  
Lumber, Inc.  
(218) 796-5131**

### DON'S MACHINE SHOP

ASE CERTIFIED REBUILDERS  
ALL GAS AND DIESEL ENGINES

- Automotive
- Industrial
- Marine
- Agricultural
- High Performance
- Vintage Auto
- Heavy Duty Diesel

CALL FOR ESTIMATE!  
INSTALLATION AVAILABLE

FOSSTON, MN  
**218-435-6379 or  
1-800-448-1518**

PRICE  
EXAMPLES:

- \*GM 350 \$1,315 - \$1,419
- \*GM 6.5 Diesel with new block \$5,330
- \*Ford 7.3 Diesel Powerstroke \$4,200

All prices are with  
exchange on a  
rebuildable core.



## Farmers Union Oil Company

Thief River Falls

218-681-3512



- Fertilizer
- Petroleum products
- Town and country deliveries
- Tires, batteries, accessories
- Farm supplies

## WILCOX PLUMBING AND HEATING, Inc.

RED LAKE FALLS

**Plumbing/Heating/Air conditioning**

BILL H. MOSER, Master Plumber  
License No. 1770PM  
BILL J. MOSER, Master Plumber  
License No. 6039PM  
Refrigerant Certified No. CFR089400285



- In-floor heating • Oil furnaces
- Pressure systems • Gas furnaces
- Electric heat pumps

FREE ESTIMATES  
COMPLETE SALES  
AND SERVICE

**218-253-4347**

## The Head-Quarters Hair and Tanning Salon

## HAIRSTYLING FOR MEN AND WOMEN

PARK PLACE MALL  
RED LAKE FALLS, MINNESOTA

**218 253-4223**

## Security STATE BANK



- Operating loans
- Vehicle loans
- Farm real estate loans
- Consumer loans

"We appreciate your business."

**218-796-5157**  
**Fax 218-796-5158**

anthony.holthusen@ssboklee.com



"THE FARMERS' HELPING HAND"

## Dave Miller Agency

DAVE MILLER, AGENT  
RURAL ROUTE 1  
VIKING, MINNESOTA 56760



- All-Risk Crop Insurance
- Crop/Hail Coverage

**218-523-5861**

# VOLTS AND JOLTS FEATURE OF THE MONTH

## Countryside Grill in East Pennington County exceeds expectations

If you're looking for the best burger in East Pennington County, head over to the Country Side Grill in Goodridge. That's a joke Harry Farris, one of the restaurant's six owners, likes to tell as they are currently the only place serving up burgers in the eastern portion of Pennington County.

All joking aside, the Country Side Grill offers a full menu for patrons to enjoy. They open at six a.m., seven days a week, and offer breakfast all day. The doors are open until eight p.m. and you'll find pork chops, steak, ham, chicken and shrimp among the plated dinner selections. Sandwiches, salad, soup and desserts round out the menu.

They often have daily specials that add to the choices, such as potato klub and eggs benedict. "We do special things for the people in the area and what they like," explains Harry. Valentine's Day has a sirloin steak and butterfly shrimp dinner special of its own. Last year it was so popular that it packed the house the entire evening.

Saturdays feature a special burger menu that includes creations such as the macaroni and cheeseburger, the Rueben burger, the PB & J burger, and the farmer's breakfast burger that tops a seasoned patty with a fried egg, hash browns and bacon. There's also the Chuck Norris burger, which boasts a pound of hamburger topped with cheese, bacon, tomatoes, onion rings and barbecue sauce between two slices of grilled Texas toast. Take the Double Chuck Norris Challenge and eat two of those burgers with fries. Finish it all and it's free. As of press time, no one has completed the challenge. If you can't decide between breakfast, chicken, or a burger, the grill has a sandwich that combines all three. The farmyard burger serves up a chicken filet, a fried egg, bacon, and lettuce on top of one of their specially seasoned burgers.

The restaurant opened just over one year ago and has seen success in that short time. Six friends, Harry and Deb Harris, Kathy and Mike Nordine, and Galen and Jodi Peters embarked on the venture in 2011. The three couples would come in the café on Sundays after church and often found themselves talking about opening a restaurant.

They were approached by the Goodridge city council in the fall of 2011, which had financed the building in 2005 through a USDA economic grant, to see if they were interested in purchasing the café as the previous owner had decided to sell. "The city of Goodridge knew they needed something. If you don't have a small town café, what have you got?" said Harry. With Harry, Deb, Kathy and Mike as operating partners and Galen and Jodi as investors, the group headed into

business ownership. "The 6 of us have been friends for years. We go to church together. We just have a good time together. It just made sense that if we're gonna do something, we might as well do it together," said Harry.

They closed on the property in mid-December and vowed to open for business on January 2nd, 2012. The partners knew they wanted to change the format of the café into a full service restaurant. They extended the hours, added the all-day breakfast and plated dinners, and obtained a liquor license.

"We knew we wanted to serve breakfast all day," explains Harry. "A lot of folks around here really like that." The dining room was remodeled and

redecorated for a more welcoming atmosphere. They added old pictures of Goodridge from the local historical society as well as photos of local veterans to add character. "Mike started the wall of veterans. It started with two pictures and tons of people have brought in and added to it, so now it wraps around the wall. It's one of the con-

versation pieces here, that and the old pictures. That's what we wanted. People really like them," explains Harry.

Booths, an office and an eating counter were also added. "We gutted it, redid the interior, and opened two weeks later," explains Harry. "There were many long nights for the six of us during the last two weeks of December." They also credit friends and family for their help. The crew was working so hard at opening on time that it was difficult for them to take time out for the Christmas holiday. "The night before we opened, we got the counter in. We were here until midnight and then back at four-thirty the next morning to get ready to open," he said. Their motivation for opening in such a small time frame was to serve the needs of the community, a main focus the eatery. "The community didn't have anything since the beginning of November," said Harry of the lack of restaurants in the area. "It was more important for us to open for the community."

The partners knew that at least one of them had to be dedicated to the restaurant full-time. Harry has taken on that role, although all four of the operating partners work at the restaurant regularly in whatever capacity is needed. Deb, Kathy and Mike all have full-time teaching jobs as well. Harry explains that they work together well because they each bring different things to the table. "Deb and Kathy rule with an iron spatula," Harry jokes about how they oversee the kitchen, "Mike's the funny one. He's the idea guy. He does the public relations." They also have



The walls of the Countryside Grill are decorated with visions of the past including framed photos of local historic sites and military veterans.

several employees, many of which are also family. "I think everyone's got their own thing that they really like doing. Deb likes cooking the steaks. Our son Sean likes cooking breakfast," he explains. Deb's mother, Pat Panek, makes all of the pies they serve. "She's the pie lady. Everyone around here knows Pat's pies. All of our pies are homemade," he said.

The restaurant caters to the community in several capacities. They offer a full dietary restriction menu for those that need diabetic or gluten free choices. Harry explains that they are always open to special requests, "We try to accommodate when we can." They sponsor scholarships for local students as well as preparing take-out orders for the sports teams so they can have food on the bus during those long rides to away games. They do catering and deliver burgers at the Goodridge

Municipal Liquor Store during bingo on Friday evenings.

The grill also took on the senior meals for the community as the program had recently been cut in the area. They serve a full meal, including drink and dessert, at a drastically reduced price. The partners decided that even though they often take a loss on the meal, it was an important thing to do. "It's a social thing for the seniors. There was a need for it, so we decided to do it. We try to give back to the community," said Harry.

Harry stresses that the community is the reason they wanted to open in the first place, "We came in to have fun, enjoy it, and provide a service to the community. That's what it's all about, being part of the community. It's getting to know the people and families and how they are connected. It's really neat."

According to Harry, the restaurant has exceeded expectations in the first year. "The biggest thing to us is the support of the community. They've been awesome. We thank them," explains Harry, "The breakfast regulars are here every morning. Its neat how everyone pulls together is a small community. It's a small town with good people."

In the future they would like to add a banquet room that can be closed off from the dining room to hold events and meetings. Already they have several businesses that utilize the restaurant in that capacity. They also want to keep making improvements to the (5204003.02 Evan Mapes) place so that it continues to serve the community and is successful. "The support of the community is great," Harry says, "As long as we have fun doing this, that's all that matters."



Classic style bar stools at the counter near the kitchen of the Countryside grill.

## Bray-Gentilly Mutual Insurance Co.

Locally Owned and Operated  
Serving Policyholders Since 1900

**218-683-3200**

2017 Hwy. 59 SE • P.O. Box 592  
Thief River Falls, MN 56701

**INSURANCE FOR  
FARMS, HOMES  
AND PERSONAL  
PROPERTY**

TELEPHONE US FOR AN  
AGENT NEAR YOU!

THIS SPACE  
FOR RENT  
**253-2594**

## Kilen's Custom Cleaners

- Commercial
- Residential
- Custodial



Specializing in  
Water, Fire & Soot Restoration

Jordan Kilen - Owner  
(218) 686-2591

www.kilencustom.com

— Free Estimates —

"Achieving excellence  
one customer at a time"

## Want to cut your heating cost by up to 50%?

Buy a YORK Affinity  
heat pump today!



## GROVE MECHANICAL, INC.

Your hometown heating &  
air conditioning team!

Serving Crookston and the surrounding  
communities for 30 years.  
**(218) 281-3863**

OFFICE PHONE

**253-2168**

OUTAGE PHONE

**253-2200**

**1-800-245-6068**



Red Lake Electric  
Cooperative, Inc.

One of the Minnesota Power Systems





Charles Swenson, Viking, served as the chairperson during the business session of the District 3 meeting held January 28.



Kathryn Rokke, Newfolden, was the winner of a George Foreman grill at the District 3 meeting held January 28.



Prize winners at the District 3 meeting held at the Newfolden Community Center included Janice Olson, left and Joan Roppe both of Newfolden.



Following each of the district meetings attendees were treated to pie and ice cream. Pictured are District 3 attendees as they enjoy their lunch in the Newfolden Community Center.



Serving as the chairperson during the business session of the District 6 meeting held January 28 was Gladyce LaCrosse of Red Lake Falls.



Attendance at the District 6 meeting held at the Terrebonne Town Hall on a slippery winter evening was good with 35 people attending.

We

are committed to  
meeting your health care needs.



Ronald Dorman, MD



Deb Myrfield, PA-C



Elisabeth Ring, PA-C



Carrie Clauson, PA-C



Andres Makarem, MD



Olimide Ajayi, MD

Call 218.253.4343  
for an appointment  
at Altru Clinic in  
Red Lake Falls.

**Altru**  
CLINIC

Improving Health, Enriching Life

altru.org/redlakefalls

## Informational Web Sites

The following is a list of Web sites that can provide information and education in reference to electrical safety and energy conservation. These Web sites are listed as links on Red Lake Electric Cooperative's Web site at [www.redlakeelectric.com](http://www.redlakeelectric.com).

- Electrical Safety Foundation International: [www.esfi.org](http://www.esfi.org)
- Alliance to Save Energy: [www.ase.org](http://www.ase.org)
- US Environmental Protection Agency: [www.epa.gov/greenhomes](http://www.epa.gov/greenhomes)
- Energy Star: [www.energystar.gov](http://www.energystar.gov)
- Minnesota Safety Council: [www.minnesotasafetycouncil.org](http://www.minnesotasafetycouncil.org)
- Safe Electricity: [www.safeelectricity.org](http://www.safeelectricity.org)
- Lighting Controls Association: [www.aboutlightingcontrols.org](http://www.aboutlightingcontrols.org)
- US Consumer Product Safety Commission: [www.cpsc.gov](http://www.cpsc.gov)

Your #1 Fans . . .

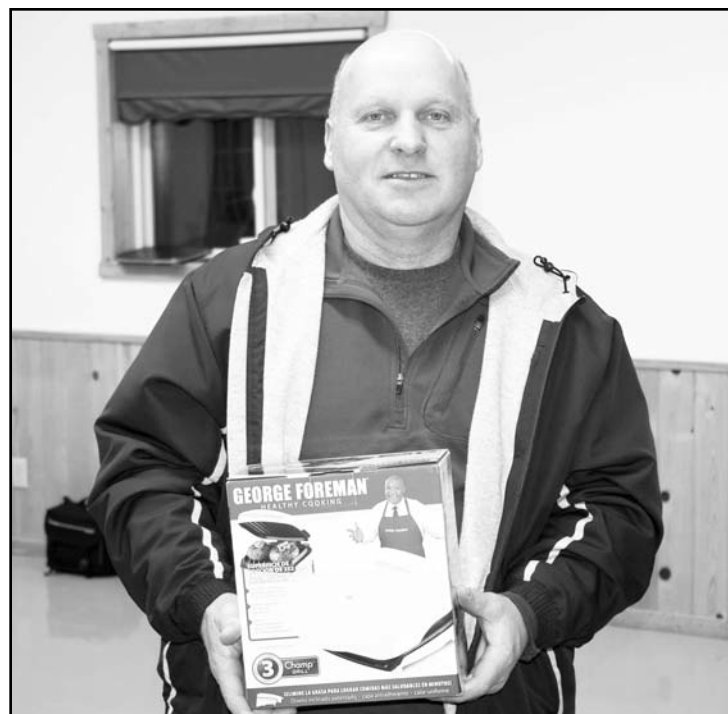
Auto-Owners Insurance and your local independent agency have been a winning combination since 1916. We'll work with you to insure your home, auto, business and life and keep everything you value Safe. Sound. Secure.®



Red Lake Falls, MN  
218-253-2177 • [rlci@gvtel.com](mailto:rlci@gvtel.com)  
[www.redlakecountyinsurance.com](http://www.redlakecountyinsurance.com)



**Auto-Owners Insurance** Auto-Owners Insurance  
12695 (09-11)



Winner of the George Foreman grill at the District 6 meeting held at the Terrebonne Town Hall was Jeff Genereux of Red Lake Falls.

## MEMORIES CAFE



253-4222

217 8th St SE • Red Lake Falls

### Breakfast Specials

**Monday**  
2 Eggs & Toast  
**Tuesday**  
2 Eggs, Hasbrowns & Toast  
**Wednesday**  
2 French Toast  
**Thursday**  
1 Pancake & 1 Egg  
**Friday**  
2 Eggs, Hasbrowns & Toast

### SUPPER SPECIALS

**Walleye Dinner**  
8 oz. Boneless Pork Chop  
8 oz. Sirloin Steak  
10 oz. Fish Fillet  
4 pc. Chicken

All are served with a side salad, choice of potato and a roll served from 5-8 pm Monday - Saturday

**OPEN Everyday**  
5 a.m. - 10 p.m.

## Pediatric Care as Exceptional as Your Kids



Dr. Paula Brito sees patients at RiverView Clinic in Red Lake Falls and Crookston. Same day appointments are available.

For appointments, call  
218.253.4606 in Red Lake Falls  
or 218.281.9595 in Crookston.



**RIVERVIEW HEALTH**  
Exceptional People. Exceptional Care.

323 S Minnesota Street, Crookston | Park Place Mall, Red Lake Falls





Grant Erickson of Red Lake Falls served as the chairperson during the business session of the District 9 meeting held January 29 at Black River Lutheran Church.



Charles Naplin of Thief River Falls was the winner of an electric knife at the District 9 meeting held at Black River Lutheran Church.



June Mosbeck, Red Lake Falls, displays the George Foreman grill she won at the District 9 meeting held January 29.



David "Joe" Ste. Marie of Red Lake Falls won an extension cord at the District 6 meeting held January 28.



District 9 meeting attendees listen intently as information concerning Red Lake Electric Cooperative was shared with them. The meeting was held January 29 at Black River Lutheran Church.

## Take steps to prevent electric fires

Fires can destroy homes and valuables and take lives. Electrical fires are particularly destructive and deadly. Safe Electricity encourages you to learn how to prevent electrical fires.

Electrical fires can be prevented by understanding your electrical system and taking proper precautions:

If electronics spark, you regularly experience shocks, or the lights flicker when you plug in electronics, you have an electrical problem. Contact a qualified electrician to inspect your home. If your home has never had an inspection, consider getting one, especially if you live in an older home.

Switch plates and outlet covers that are discolored or warm to the touch indicate a problem and should be checked out. Immediately shut off light switches that are hot to the touch. Have them professional-

ly replaced.

Arc Fault Circuit Interrupters (AFCIs) help prevent electric fires. AFCIs are installed in circuit boxes where they monitor electricity. If the AFCI detects a dangerous situation that could start a fire, electrical power is shut off. A qualified electrician can install AFCIs in your home.

Use light bulbs that are rated for the fixture. If you use a light bulb with a higher wattage than specified, the light can overheat and start a fire.

Extension cords are only for temporary use. If too many electronics are plugged into an outlet or extension cord, the outlet can (5824002.04 Dorothy Roi) become overloaded and start a fire.

Electronics, appliances and cords should be kept in good working condition. Damaged electronics; worn, cracked, or frayed cords; and power plugs with the third grounding pin

removed should be repaired or replaced.

Cords should not be under rugs, used in high-traffic areas, or tacked to the wall.

Children and pets should know outlets, cords, and plugs are not toys.

If you are putting a nail into a wall, know what lies behind the wall. A punctured wire could shock you immediately, or cause a fire in weeks, months, or years. Some electronic stud finders can be used to locate wires and avoid them.

Even if you do everything possible to prevent an electrical fire, you should still have a plan if a fire does happen. Have smoke alarms, and be sure their batteries work. Know two ways to exit your home, and designate a meeting place for your family.

For more tips on electrical safety, visit [SafeElectricity.org](http://SafeElectricity.org).

## AUTO PAY OFFERED BY RLEC

Red Lake Electric Cooperative is pleased to offer you Auto Pay. Now you can have your monthly energy bill paid automatically from your checking or savings account. You can receive the Auto Pay service by completing the Auto Pay sign-up sheet and returning it to Red Lake Electric Cooperative.

The Auto Pay service is free of charge. Not only is this service free, you will eliminate the expense of writing a check, postage to mail your payment and no more late payment penalties because your bill will be paid on time, every month, for you.

Your payment will be automatically made for you on the 5th of each month. If the 5th

falls on a weekend or holiday, the payment will be made on the next business day. You will continue to receive your monthly energy bill as you have in the past, indicating the amount that will be withdrawn from your bank account. The proof of your payment will appear on your bank statement and your next month's energy bill statement.

**Continue to pay your monthly bill until you are notified on your bill that the Auto Pay has been set up for you.**

If you have any questions about the Auto Pay please call RLEC at 800-245-6068 or 218-253-2168.

## AUTO PAY SIGN-UP SHEET

I authorize Red Lake Electric Cooperative (RLEC) and the bank listed below to initiate variable entries to my checking or savings account. This authorization remains in effect until I notify RLEC in writing to cancel it in such time as to allow RLEC to act on it.

RLEC ELECTRIC ACCOUNT #

NAME (PRINT)

ADDRESS

TELEPHONE #

NAME OF FINANCIAL INSTITUTION

CHECKING ACCOUNT #

SAVINGS ACCOUNT #

SIGN HERE TO AUTHORIZE

Please return this authorization form with a blank, voided check to:  
Red Lake Electric Cooperative, P.O. Box 430, Red Lake Falls, MN 56750

## Unity Bank has teamed up with Kinetic Leasing, Inc.

Unity Bank North has recently teamed up with Kinetic Leasing, Inc., a Fargo, N.D. based firm, to enable it to add equipment leasing to its list of business banking products.

"Businesses and farmers in Minnesota, much like other growing companies throughout the country, are turning to non-bank financial institutions at an accelerating rate for lease financing," say Dan Saville, SVP, Kinetic leasing. "This is in part due to the fact that non-

bank competitors are sometimes more flexible, but primarily due to the fact that most commercial banks do not offer lease financing options to their customers." The lease program partnership provided by Kinetic Leasing will enable Unity Bank North the ability to offer its customers an additional equipment financing solution, as well as compete on a direct basis for lease business in its market.

"Industry-wide, leasing has become an attractive alternative

form of financing equipment purchases as to conventional loan financing," adds Dan Saville. "In a recent survey conducted by a leasing industry association, it was noted that leasing has become one of the largest funding source funding source for purchases of capital equipment in the United States." Benefits of leasing are numerous with the primary benefits consisting of utilizing income tax advantages, improving cash flow, financing 100 percent of the equipment purchase and protecting against equipment obsolescence.

As business owner, you are faced with hundreds of decisions financing equipment on a loan versus a lease. You don't need to be an expert on bank products but there are a lot of tools available and many options to consider. Our experienced Bankers are dedicated to find the best financial solution for your unique business needs. All of our decisions are made locally so you can be assured you (7011001.02 Brenda Gervais) will have efficient service and quick answers from our staff.

Kinetic Leasing is an independent, general equipment lease and finance company headquartered in Fargo, N.D. The company currently offers bank lease programs to over 100 banks throughout the country, and leases various types of equipment to commercial entities and municipalities located in over 40 states.

For more information:  
•Tim Hoefer, Unity Bank North---218-253-7019  
•Reed Engelstad, Unity Bank North---218-253-7011  
•Ed Turn, Unity Bank North---218-253-7017  
•Dan Saville, Kinetic Leasing, Inc., (1-800-558-7337)



## Arrive After Five

TREATING PATIENTS OF ALL AGES

### After Hours Walk-in Clinic Monday - Thursday | 5 - 7 p.m.

No Appointment Necessary

218.281.9100

400 S. Minnesota Street, Crookston, MN

Elisabeth Ring PA-C  
Deb Myrfield PA-C  
Mindy Staveteig PA-C  
Carrie Clauson PA-C  
Mary Lee Beck, NP-C



Improving Health, Enriching Life

[altru.org](http://altru.org)

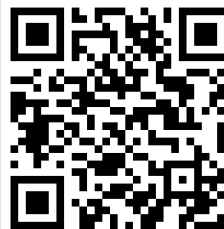


## Red Lake Electric Cooperative, Inc.

One of the Minnkota Power Systems

Phone  
Toll-free  
Fax  
After-hour outage  
Office hours  
E-mail:  
Web site

218-253-2168  
1-800-245-6068  
218-253-2630  
218-253-2200  
Monday-Friday, 8:00-4:30  
[redlake@minnkota.com](mailto:redlake@minnkota.com)  
[www.redlakeelectric.com](http://www.redlakeelectric.com)



Call Before You Dig - Gopher State One Call • 1-800-252-1166

P. O. Box 430 • 412 International Drive SW • Red Lake Falls, MN 56750-0430







# chilled TO THE BONE? warm-up TO THESE SAVINGS

## ATTENTION GM OWNERS

February Is The  
Month To Trade.  
Extra Incentives For Owning  
And Trading GM Vehicles



### 12 Chevrolet Equinox's

Cloth, Leather,  
All Wheel Drive

**JUST  
ARRIVED**

## The All New Chevrolet Malibu is Here!

6 Malibu's  
In-Stock



Stock #38020

### 2012 Chevrolet Silverado LS 4x4 Regular Cab

Mocha Steel Metallic, Power Windows, Locks and Mirrors, 4.8 V8

**MSRP \$30,660**  
February Discount \$29,500  
Less Rebate -\$3,000  
\*Trade Assistance -\$1,000  
\*GM Loyalty Discount -\$1,000  
\*You must trade in 1999 or newer vehicle  
\*You must own a GM vehicle 1999 or newer

**FINAL PRICE**  
**\$24,500**



Stock #39028

### 2013 Chevrolet Extended Cab 4x4 LT Z71

Mocha Steel Metallic, Power Seat, Aluminum Wheels, Fog Lights

**MSRP \$37,090**  
February Discount \$35,400  
Less Rebate -\$3,000  
\*Trade Assistance -\$1,000  
All Star Package Discount -\$1,000  
\*GM Loyalty Discount -\$1,000  
\*You must trade in 1999 or newer vehicle  
\*You must own a GM vehicle 1999 or newer

**FINAL PRICE**  
**\$29,400**



Stock #39032

### 2013 Chevrolet Silverado Crew Cab LT 4x4

Power Seat, Fog Lights, All Star Edition

**MSRP \$39,045**  
February Discount \$37,000  
Less Rebate -\$3,000  
All Star Package Discount -\$1,000  
\*Trade Assistance -\$1,000  
\*GM Loyalty Discount -\$1,000  
\*You must trade in 1999 or newer vehicle  
\*You must own a GM vehicle 1999 or newer

**FINAL PRICE**  
**\$31,000**

#### USED SUV

2012 Buick Enclave CXL FWD Leather, 7 Pass, Back Up Camera, Power Lift Gate, 25000 Miles, Silver .....	\$31900.00
2010 Buick Enclave CXL FWD, Leather, Chrome Wheels, 7 Pass, BU Camera, 62000 Miles, Diamond White .....	\$26800.00
2010 Buick Enclave CXL FWD, Leather, BU Camera, 7 Pass 13600 Miles, Silver .....	\$28800.00
2010 Chevy Traverse FWD, ZLT, BU Camera, 7 Pass, Power Lift Gate, 82000 Miles, Red Jewel .....	\$18500.00
2010 Ford Escape XLT FWD, V-6, 55000 Miles, Mystic Black .....	\$15900.00
2008 Chev Suburban LT1 4x4, Cloth, 8 Pass, 54000 Miles, DK Blue .....	\$25900.00
2008 Buick Enclave AWD CXL, Nav, Leather, Sunroof, 7 Pass, 80000 Miles, Grey .....	\$24995.00
2008 Buick Enclave FWD, CXL, Leather, Goldmist, \$20500.00	
2007 Chev Tahoe, LTZ, 4x4, Leather, Sunroof, 20" Wheels, 100000 Miles, Summit White .....	\$21900.00
2007 Chev Tahoe, LTZ, DVD, Nav, sunroof, Buckets, Bose, 111000 Miles, Goldmist .....	\$22500.00
2007 Chev Trailblazer, LT, 4x4, leather, 98000 Miles, Gray .....	\$10900.00
2005 Chev Trailblazer LT, 4x4, Sunroof, 85000 Miles, Silver .....	\$9900.00
2005 Chev Suburban Z71, 4x4, Sunroof, DVD, Buckets, 185000 Miles, Black .....	\$9500.00
2005 GMC Envoy XLT, Leather, 159000 miles, Charcoal .....	\$6900.00
2004 GMC Envoy SL, SLT Denali, Leather, Nav, Sunroof, 146000 Miles, Black .....	\$7900.00
2003 Chev Tahoe LS 4x4, Cloth, 3rd Seat, 140000 Miles, Sandstone .....	\$8900.00

#### USED VANS

2008 Chev Uplander, DVD PW Door, 96000 Miles, Maroon .....	\$9500.00
2008 Chev Uplander LS, 120000 Miles, Gold .....	\$7900.00
2007 Dodge Gr Caravan, SXT, DVD, 102000 Miles, White .....	\$9900.00
2005 Chev Uplander LT, 92000 Miles, DVD, Maroon .....	\$7900.00

#### USED 3/4 TON PICKUPS

2010 Chev Silverado 2500 Crew 4x4 LT1, 36000 miles, White .....	\$31995.00
2006 Ford F250 Crew Lariat, 6.0 Diesel, Heated Leather, 144000 Miles, Black .....	\$19900.00
2006 Dodge 2500 Quad Cab 4x4 SLT, Diesel, 190000 Miles .....	\$16900.00
2004 Chev 2500 Crew Cab 4x4, 175000 Miles, Charcoal .....	\$10900.00
2002 Chev 2500HD Crew 4x4, Diesel, 269000 Miles, White .....	\$9900.00

#### USED 1/2 TON CREW CAB PICKUPS

2011 Chev Silverado Crew 4x4, Z71, White Diamond, Chrome Wheels, 41000 Miles .....	\$27900.00
2010 Chev Silverado Crew 4x4, Z71, 52000 Miles, Gray .....	\$26900.00
2010 Chev Silverado Crew 4x4, Z71, 39000 Miles, Silver .....	\$26500.00
2009 Chev Silverado Crew 4x4 Z71, 43000 Miles, Blue Granite .....	\$25500.00
2008 Chev Silverado Crew 4x4 Z71, 53000 Miles, Silver .....	\$23900.00
2008 Chev Silverado Crew 4x4 Z71, 59000 Miles, Gray .....	\$23500.00
2007 Chev Silverado Crew 4x4 LTZ Maxx, 6.0 V8, Heated Leather, 52000 Miles, Red .....	\$25900.00
2007 Chev Silverado Crew Classic 4x4, 41000 Miles, Gray .....	\$21500.00
2007 Chev Silverado Crew 4x4 Z71, 91500 Miles, Gray .....	\$19995.00
2006 Chev Silverado Crew 4x4, Z71, 109000 Miles, Blue .....	\$16900.00

# THIBERT'S

Red Lake Falls, Minnesota  
(800) 247-CHEV (2438)



**BUICK**  
THE SPIRIT OF AMERICAN STYLE™



**CHEVROLET**

Like a rock.

**WWW.THIBERTS.COM**