



# Volts and Jolts

Published monthly for the members of  
**RED LAKE ELECTRIC COOPERATIVE, Inc.**

*One of the Minnkota Power Systems*

**SERVING THE FOUR-COUNTY AREA OF MARSHALL, PENNINGTON, RED LAKE AND POLK**  
*and a portion of the lands of the Red Lake Band of Chippewa*

VOL. 50 – NO. 5

RED LAKE FALLS (RED LAKE COUNTY), MINNESOTA 56750

FEBRUARY 2015

## District meetings held in January

Three district meetings were held within Red Lake Electric Cooperative's (RLEC) service area the last week of January. Topics reviewed at the meetings included 2014 in review, solar discussion, LED security lighting, off peak electric heat, rebate incentives and online bill pay options (Bill4U).

In his manager's report Roger Johanneck discussed current year activities, citing a number of different accomplishments by the Cooperative in 2014. Johanneck pointed out that our Wholesale Power Cost will have a 5 percent increase in April of 2015. RLEC has no intent of raising retail rates in 2015.

Shirley Bregier, office manager, reviewed the options to paying your electric bill which included the Bill4U online payment option. Besides being able to pay online you also have the ability to check your daily usage by using Bill4U.

In the report from member services, Kelli Brateng shared how off-peak electric heat is more economical for heating than propane. She also dis-



**The District 2 meeting was held Jan. 27 at Nazareth Lutheran Church in Holt. Additional district meeting photos appear on pages 5 and 6.**

cussed the many option available for rebate incentives.

The District 7 meeting was held Jan. 26 at Oak Park Church. Aaron Chervestad was unanimously elected as the director candidate from the district. Previous director Kelly Lundeen did not seek reelection.

The District 2 meeting was held the afternoon of Jan. 27 at Nazareth Lutheran Church in Holt. Cooperative members in attendance unanimously elected Stacy Blawat, the incum-

bent director, as the director candidate from the district.

The District 8 meeting was held the evening of Jan. 27 at St. John's Lutheran School. Incumbent director, Robert Finstad, Thief River Falls, was unanimously elected as the director candidate of the district.

A total of 79 members and friends attended the three meetings. Door prizes were awarded and lunch was provided at each of the meetings.

## The message is clear

### *EPA reaffirms approval of N.D. regional haze plan*

In a victory for Minnkota Power Cooperative and the state of North Dakota, the U.S. Environmental Protection Agency has reaffirmed its approval of North Dakota's regional haze plan.

This rulemaking will allow Minnkota, Red Lake Electric's wholesale power provider, to continue to significantly reduce emission levels at the coal-based Milton R. Young Station through proven, cost-effective technology. The EPA's reconsideration would have potentially implemented a federal regional haze plan, which would have required a \$500 million investment in technology that has not been proven to work on cyclone-based boilers using North Dakota lignite coal.

The EPA's reconsideration came in response to a petition by environmental law firm Earth Justice challenging the state's best available retrofit technology (BART) controls for nitrogen oxides (NOx) emissions at three coal-fired electric generating units, including the two units at the Minnkota-operated Young Station near Center, N.D. The EPA said it has considered all timely significant comments and determined that the State Implementation Plan (SIP) for regional haze meets all necessary environmental requirements for good stewardship.

The state of North Dakota and Minnkota have been in an ongoing dispute with the federal EPA about the appropriate regional haze plan. The dispute centers on how the state plans to improve visibility in Class I areas like Theodore Roosevelt National Park. The regional haze program only addresses visibility; it is not a health-based program.

Minnkota has made major improvements at the Young Station throughout much of the last decade to address environmental concerns, including visibility issues in Class I areas. About \$425 million has already been invested at the Young Station to significantly lower emissions of sulfur dioxide (SO2) and NOx and mercury. The Young Station provides the majority of the electricity needs for more than 125,000 retail consumers in eastern North Dakota and northwestern Minnesota.

The EPA plan, or Federal Implementation Plan (FIP), would have required an additional \$500 million in emissions control technology. In addition to technical issues, EPA's plan, even if it did work, would not provide a perceptible improvement in visibility. In fact, modeling done by the North Dakota Department of Health indicates that even if you shut down all of the power plants in North Dakota, the

state still wouldn't be able to meet the FIP.

The regional haze program tasks each state with developing, implementing and administering clean-air rules. The state plan has received strong bipartisan support from elected officials in North Dakota.

"We have worked virtually for years to arrive at this decision, which is good news not only for the state's coal industry and the people who work in it, but for North Dakota," U.S. Sen. John Hoeven said. "It means the industry can continue to provide affordable energy to our state and our region with good environmental stewardship."

U.S. Sen. Heidi Heitkamp has also been pushing the EPA to accept the state's plan rather than forcing a more costly one-size-fits-all federal plan.

"North Dakota set up its own proposal to address the regional haze emitted by our utilities and today, the EPA finally listened and approved the initial plan so our state can determine the policies that make the most sense for us," Heitkamp said. "As we move forward, I'll continue to push on the EPA to fully approve North Dakota's plan so we can support the utilities in the state that turn on our lights and heat our homes."

## Operation Round Up grant applications due March 5

Organizations involved in community projects and charities are encouraged to apply for funds from Operation Round Up at this time. Completed grant applications are due in the Red Lake Electric Cooperative (RLEC) office by Thursday, March 5.

Operation Round Up is a program adopted by RLEC headquartered in Red Lake Falls. Members choosing to "round up" their monthly electric bill payment provide funds for this effort. Today 94 percent of RLEC members now choose to contribute pennies each month to enhance their communities.

Funds will be donated primarily to nonprofit organizations to help fund specific projects or programs.



ects or programs.

Since the program began in 1993, \$442,000 has been granted to community organizations and charities. Money is donated for the betterment of the community within the outside service area boundaries of RLEC.

The Red Lake Electric Trust Board of Directors determines grants. Board members are

Patty Mickelson, Oklee; Van Swanson, Thief River Falls; Randy Knutson, Newfolden; Roger Johanneck and Bonnie Christians, Crookston.

To apply for Operations Round Up grants, organizations should contact the RLEC office in Red Lake Falls at 218-253-2168 or 800-245-6068.

A short application must be completed and submitted along with a financial statement from the organization. The grant application form is available on the Cooperative's Web site: [www.redlakeelectric.com](http://www.redlakeelectric.com)

For more information contact Roger Johanneck, General Manager of RLEC, at 218-253-2168 or 800-245-6068.

## Why you should attend our annual meeting

It's that time of year again – annual meeting time! On behalf of Red Lake Electric Cooperative, we'd like to personally invite you to join us on March 25, 2015 at the Ralph Engelstad Arena. We look forward to gathering with you – members of the co-op community – to catch up, hear what you have to say and enjoy some good food and fellowship.

This event is not only a chance to visit with members of our co-op community – it's also a great opportunity to

learn about programs offered by Red Lake Electric and get to know your co-op staff. Our annual meeting makes it possible for us to gather feedback from you by providing a forum where you can let us know how we can better serve you and your family.

This is an occasion to discuss and learn more about the issues affecting our local communities. Our employees and directors are members of your community. They are concerned with the issues you face

every day because they face them too.

Rest assured, no matter what happens, we remain dedicated to providing you with safe, reliable and affordable electric service, but we encourage you to take part in helping us improve how we deliver that service.

So make it a point to join us on March 25 at our annual meeting. We promise we will make it worth your while!

### In this month's *Volts and Jolts*

**Page 2**  
Manager's Comments

Report from the Office

Director nominations, petitions due Feb. 23

**Page 3**  
Recipe Corner

Avoid getting in hot water with your energy bill

**Page 4**  
Feature of the Month:  
*In 1940 rural electricity became a reality*

**Page 5**  
From the Mail Bag

**Pages 5 & 6**  
Member meeting photos

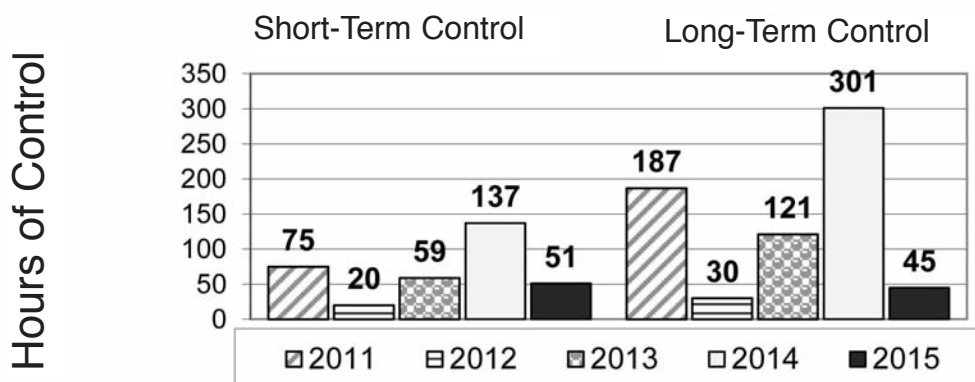
**Page 8**  
Give yourself some credit

### QUICK TAKES

A look at some statistics from your Red Lake Electric Cooperative

The chart below shows the amount of control time for Red Lake Electric Cooperative's Off-Peak customers this heating season compared to the same period the past four years. Energy sales, service interruptions and Off-peak control hours are all good examples and reminders of how your Red Lake Electric Cooperative business is impacted by the weather.

### OFF-PEAK CONTROL HOURS through February 15th



## Official Notice of Annual Meeting

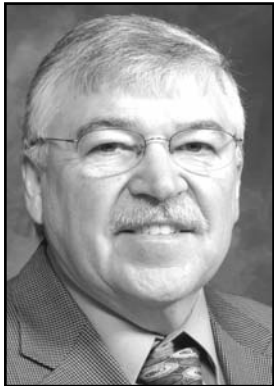
All members of Red Lake Electric Cooperative, Inc. are hereby notified of its annual meeting. The annual meeting will take place at 10:30 a.m. Wednesday, March 25, 2015, at the Ralph Engelstad Arena in Thief River Falls.

The meeting agenda includes year 2014 in review, financial reports and election of directors. Door prizes will be awarded and lunch will be served.

All members are encouraged to attend.

/s/ Mark Hanson, Secretary





## Manager's Comments

by Roger Johanneck



# 2015 Legislative Update

Each year in February or March, our statewide association, the Minnesota Rural Electric Association (MREA) holds its annual meeting in St. Paul. A good share of the annual meeting is devoted to hearing legislators talk about issues going on at that statewide level and from other presenters on topics from our industry. There is also a time set aside for attendees to visit the state capital building and meet with our area representatives on topics that may surface in the legislature.

To give you an idea (4709001.02 Brent A. Anderson) about what those issues the Minnesota legislature may explore this session, I have included that list of possibilities covered in an article already written by MREA's Joel Johnson, who lobbies on behalf of Minnesota's rural electric cooperatives and Darrick Moe, Acting Director, Government & Public Affairs.

**State FEMA Reimbursement**  
Electric cooperatives believe member-owned electric cooperatives should have access to state disaster funds to help our communities rebuild after natural disasters, just as municipal utilities do. Damage to electric co-op lines is included in the calculation that triggers FEMA Disaster Declarations and we are eligi-

ble for federal assistance.

The legislation provides electric cooperatives with access to state relief funds through the Department of Public Safety, streamlining the process currently in place.

**Net Metering Reform**  
This legislation would reform the state's current net metering statute for electric cooperatives and municipal utilities by eliminating the shifting of costs and allowing co-ops boards and municipal utility commissions and city councils to recover the fixed costs it takes to serve net-metered members and customers.

Under the legislation, new installations of small (under 40kW) distributed generation would have the choice to:

- Sell all of the output to the utility at avoided or wholesale cost; or

- Receive a kWh credit on their bill, with excess credits rolling over month to month.

At the end of a calendar year the credits may expire at the choice of the utility, eliminating the incentive to oversize generation.

- Boards and commissions will be allowed to charge a monthly grid fee to recover costs.

**Stray Voltage**  
Minnesota continues to lead the country in the number of electric cooperatives with

stray voltage cases in court. We believe the state needs to establish standards for measuring and mitigating stray voltage complaints as a way to help dairy farmers and avoid costly litigation. The standard would make utilities accountable if they didn't respond to complaints properly, but also protect them from frivolous complaints.

We support legislation that will require those providing expert testimony on the way a utility's system is designed and engineered be licensed electrical engineers. The legislation would also require those providing expert testimony on stray voltage testing and measurements on a farm be licensed Master Electricians. We believe these common-sense requirements will deter some of the questionable "consultants" pushing these cases. **Railroad Crossing Fees**

This legislation yet to be introduced, would standardize the fee for utilities crossing railroad tracks at a flat fee of \$750. The language in the bill is similar to what is on the books in South Dakota.

**Move-Over Legislation**  
The Move-Over Statute, which requires drivers to slow down and move over (if possible) when approaching police or emergency vehicles would be changed to include utility vehicles.



## Report from the Office

by Shirley Bregier

The RLEC office is busy getting ready for the 77th Annual Meeting. One of our tasks in preparing for the annual meeting is to assign the Cooperative margins for 2014 and get ready to retire capital credits. So what are capital credits?

Capital credits reflect a member's ownership in the cooperative. Simply put, capital credits are the amount of revenue left over at the end of the business year once all the operating expenses have been paid. At the end of 2014 the Cooperative had margins (revenue minus expenses) of \$825,752.

Being we are a not-for-profit cooperative, this amount will be divided up between all members who paid an electric bill during the year of 2014. The margins will be divided up based on how much each member paid the coop during the year for their electricity.

The Cooperative had about 4,500 members that will share these margins. This assignment of capital credits will remain in each members account to be used by the Cooperative to build new or

rebuild aging infrastructure, improve capacity and operate the Cooperative.

Your Cooperative has an equity plan in place which guides the board in the annual evaluation of retiring capital credits to the membership. When a payout is approved by the Board of Directors, the oldest capital credits are paid back first. RLEC retires credits on a rotation of approximately 20 years which helps the coop maintain an ideal equity level.

In January, your board of directors approved the payment of the balance of capital credits assigned to members in 1996 and 90 percent of the 1997 capital credit assignment for a total of about \$435,000.

For those of you that are a current member and still receiving an electric bill from Red Lake Electric, you will get this in the form of a credit on the electric bill you receive in March. If you have since moved and no longer receive an electric bill you will receive a check mid-March.

### Off-Peak Readings

This is also a good time to remind those of you that have off-peak systems to check the reading on your off-peak meter to the one reading shown on your electric bill. Keep in mind that the reading on the electric bill was taken on the last day of the month.

This is a good thing to do for all meters but off-peak systems, especially those in shops and garages, aren't always in use and therefore will send a reading showing no usage which may look okay to us. Even with all the checks we have in place to alert us when an automated reading device is not reporting correctly, it is still a good thing to look at the meter reading periodically just to be sure everything is working properly.

Like always, (2204005.03 Roger A. Rivera Jr.) if you have a question or concern please call our office at 1-800-245-6069 or e-mail us at redlake@minnkota.com.

Watch for your capital credit payment and I hope to see you at the annual meeting on March 25th.

## VOTING DELEGATE CERTIFICATION

Members that are corporations, churches, townships, schools or other government units may vote at the annual meeting. This form must be filled out, signed by officers and presented at the annual meeting registration desk or returned with a mail ballot.

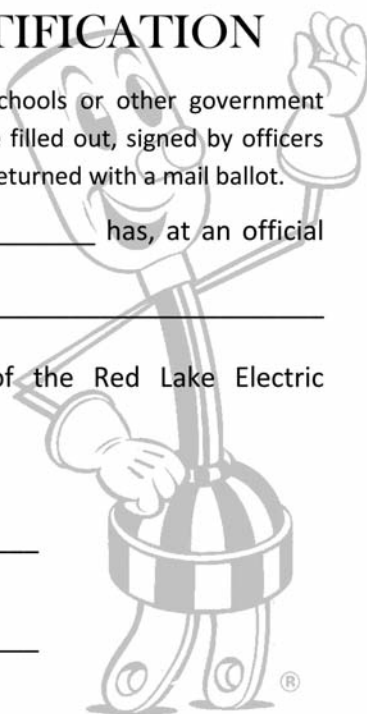
The \_\_\_\_\_ has, at an official  
Name of Member  
meeting, designated \_\_\_\_\_  
Name of Delegate

to represent us at the 2015 annual meeting of the Red Lake Electric

Cooperative, Inc.

Attest \_\_\_\_\_  
Chairman or President

Attest \_\_\_\_\_  
Clerk or Secretary



# Director nominations, petitions due Feb. 23

Each year the terms of three of Red Lake Electric Cooperative's (RLEC) directors expire the day of the annual meeting. Members of each of the three districts whose present director's terms will expire March 25 have elected director candidates at the recently held district meetings.

The names of the candidates are Stacy Blawat, Thief River Falls, District 2, Aaron Chervestad, Oklee, District 7, and Robert Finstad, Thief River Falls, District 8.

Their names will be placed in the nomination at the annual meeting. Any other member within these districts wishing to have their name placed in nomination must do so by petition. The petition is due in the RLEC office in Red Lake Falls by 10 a.m. Feb. 23.

At least 15 members of the district must sign the petition

for the director nominee. The nominee's name will then be placed on the election ballot at the annual meeting March 25 at the Ralph Engelstad Arena in Thief River Falls.

Petition forms are available at the RLEC office in Red Lake Falls. Contact Roger Johanneck, Cooperative Manager, at 800-245-6068 or 253-2168 for more information.

## RLEC director qualifications required to be elected/serve

No member shall be eligible to become or remain a director who:

- Is not a member of the Cooperative, receiving electric service at the member's primary residence in the district from which the director is elected.
- Within three years preceding a director candidate's nomination was an employee of the Cooperative.
- Is or becomes, or at any time during the three (3) years preceding a director candidate's nomination shall have been employed by a labor union, which represents or has

represented, or has endeavored to represent any employees of the Cooperative.

- Is a parent, spouse or cohabitant of any employee of the Cooperative.
- Is a person who is a parent, spouse, or cohabitant of an incumbent director who is not up for re-election at that time.
- Is in any way employed by or substantially financially interested in an enterprise competing with the Cooperative or any Cooperative-affiliated business.
- Is or becomes the full-time employee or agent of, or who is or becomes the full-time employer or principal of, another director.

RED LAKE ELECTRIC COOPERATIVE, Inc.

## VOLTS & JOLTS

(USPS 663-400)

Published monthly by the Red Lake Electric Cooperative, Inc., 412 International Drive SW, Red Lake Falls, Minnesota 56750-0430, in the interest of its members and others. Periodical Postage Paid at the U. S. Post Office in Red Lake Falls, Minnesota 56750. POSTMASTER, SEND ADDRESS CHANGES to Volts & Jolts, c/o Red Lake Electric Cooperative, Inc., P. O. Box 430, Red Lake Falls, Minnesota 56750-0430. E-mail: redlake@minnkota.com

### OFFICERS AND DIRECTORS

PRESIDENT ..... Bonnie Christians  
VICE PRESIDENT ..... Robert Finstad  
SECRETARY-TREASURER ..... Mark Hanson  
DIRECTORS ..... Kelly Lundeen,  
Steven Linder, Peter Mosbeck,  
Colette Kujava, Randy Versdahl,  
Stacy Blawat

Subscription Rate \$2.50 per year

## NOTICE

Hidden within the text of the articles of this issue of the Volts & Jolts are the names and account numbers of some RLEC members. They will appear within the articles in parenthesis as such (9999999.99 Roger P. Member). If you find your name and account number, clip it out and send it with your next payment. You will be credited with \$5 on your electric bill.



Red Lake Electric Cooperative, Inc.

One of the Minnkota Power Systems

# Things you should know about your electric service

## BILLINGS AND COLLECTION

You will receive your energy bill on or near the 10th of each month. Payment of your monthly energy bill is due on the 10th of the month. You may pay your bill in person at RLEC during office hours, use the 24-hour drive-up drop box located next to the RLEC office, by Auto Pay, by mail or by Bill4U on www.redlakeelectric.com.

Payment must be in our office or in the mail as evidenced by the postmark on or by the 25th day of the month to avoid a late payment charge. A 1 1/2% monthly late payment charge will be computed on delinquent energy bills; the minimum late payment charge will be \$1.00.

If your payment is not received by the end of the month a notice of disconnection statement will be included in the message area on your following energy bill. The disconnection statement will give a final notice of when your electric service will be disconnected if the delinquent amount remains unpaid. If an employee is sent to disconnect your electric service a \$60 collection fee will be charged to your account, even if you pay the collector.

To have a disconnected service reconnected, all amounts owing including the \$60 reconnection fee and a security deposit must be paid. If the service must be reconnected after normal working hours a \$120 reconnection fee must be paid.

## BAD CHECKS

A \$15 charge will be levied each time a check is returned because of nonsufficient funds, account being closed or payment stopped along with any applicable bank charges.

## OUTAGES

In case your electricity goes out, please do the following:

1. Check your fuses or breakers at the yard pole or meter pedestal.
2. Call your neighbor to see if they are out of electricity also.
3. Call the RLEC office (218-253-2168 or 1-800-245-6068) during working hours or 218-253-2200 after hours.

## Mission Statement

It is the mission of Red Lake Electric Cooperative to enhance the quality of life for people of our service area by consistently providing quality electric service and other valued services while holding our employees, our community and our environment in high regard.



Red Lake Electric Cooperative, Inc.

One of the Minnkota Power Systems



# Recipe Corner



## Chicken Wild Rice

- 1 cup wild rice
- 3 cups boiling water
- 1 tsp. salt
- 2 cans mushrooms (4 oz. cans)
- 1 medium onion (diced)
- 1 Tbsp. minced parsley
- 1/2 cup butter
- 1 1/2 tsp. salt
- 1/4 tsp. pepper
- 3 cups diced chicken
- 1 can chicken rice soup
- 1 can mushroom soup
- 1/2 cup cream
- 1/4 cup grated Parmesan cheese
- 1 cup toasted almonds, slivered

Wash rice and soak for 2-3 hours. Pour boiling water over rice and cook covered for 40-60 minutes. Cook mushrooms, onion and parsley in butter for 5 minutes. Mix with rice. Add remaining ingredients except cheese and almonds (some of the almonds can be put into the mixture). Sprinkle top with cheese and almonds. Bake 1 1/2 - 2 hours at 350 degrees.

**Yield:** 8 servings.

## Dump Cake

- 1 lg. pkg. chocolate chips
- 4 egg yolks
- 2 Tbsp. powdered sugar
- 1/4 cup milk
- 4 beaten egg whites
- 1/2 pt. whipping cream
- 1 tsp. vanilla
- Angel food cake

Pan Size: 9 x 13

Melt chips in double boiler. Beat egg yolks and add powdered sugar and milk. Add this

to chocolate. Cook over hot water. Add egg whites and cool. Whip whipping cream and add vanilla. Fold into chocolate mixture. Break cake into bite-sized pieces. Put 1/2 in pan. Pour 1/2 chocolate mixture over cake. Add rest of cake and pour remainder of chocolate mixture over cake. Cut through to moisten all of cake. Chill 8 hours or overnight

## Pork Chop 'N Potato Casserole

- 6 pork chops
- Vegetable oil
- Durkee seasoned salt
- 1 can cream of celery soup
- 1/2 cup milk
- 1/2 cup sour cream
- 1/4 tsp. black pepper
- 1 pkg. thawed frozen hash-browns
- 1 cup shredded Cheddar cheese
- 1 can Durkee French fried onion rings

Pan Size: 9 x 13  
Oven Temp.: 350°  
Time: 40 Minutes

Brown pork chops in lightly greased skillet. Sprinkle with seasoned salt and set aside. Combine soup, milk, sour cream, pepper and 1/2 tsp. seasoned salt. Stir in potatoes, 1/2 cup cheese and 1/2 can onion rings. Spoon mixture into pan. Arrange pork chops over potatoes. Bake. Top with remaining cheese and onions. Bake uncovered for 5 minutes longer.

## Corned Beef Ruben Casserole

- 6 oz. pkg. Brownberry seasoned croutons
- 12 oz. can crumbled corn beef
- 16 oz. can drained sauerkraut
- 8 oz. Swiss cheese slices
- 3 eggs
- 2 cups milk

Pan Size: 11-3/ 4 x 7-1/2 x 1-3/4 Dish  
Oven Temp.: 325°  
Time: 35 Minutes

In buttered pan, layer 1/2 of croutons, corned beef and sauerkraut. Top with remaining croutons and sliced cheese. Beat eggs and milk together, pour over croutons. Bake until browned and set in center.

**Yield:** 8 servings.

## Snickerdoodles

- 1 cup shortening (part butter adds flavor)
- 1 1/2 cups sugar
- 2 eggs
- 2 3/4 cups sifted flour
- 1 tsp. soda
- 2 tsp. cream of tartar
- 1/4 tsp. salt

Mix thoroughly the shortening, sugar and eggs. Sift together the flour, soda, cream of tartar and salt. Add to other mixture. Form into small balls. Roll in mixture of: 2 Tbsp. sugar 2 tsp. cinnamon  
Bake at 400 degrees for 8 to 10 minutes on ungreased cookie sheets.

first aid kit, battery powered radio and any special instructions. The kit (6709001.03 Enbridge Energy Partners) should be kept in an easy to reach place. Post emergency phone numbers near the telephones.

Don't expect children under the age of 10 to be able to take care of younger siblings and don't leave children younger than age six in the care of older siblings.

Teach your children common sense safety precautions such as how to use and answer the telephone, especially how to call 911. They should never tell a caller they are home alone.

Children should know where and how the door and window locks operate and how to make sure they are secured. Teach them to never enter the house if the door is ajar or any windows are broken. Instruct them to go to a safe place and call police.

Teach them to carry the house key out of sight. Keys should never be identified with a name and address.

Children should be instructed to check in immediately upon arriving home. They should call you or a designated relative or neighbor.

Acknowledgments:  
National Crime Prevention Council and Safe Kids Worldwide

## Red Lake Electric Cooperative, Inc. Operating Report MONTHLY COMPARISON

	DECEMBER 2013	DECEMBER 2014
Total Revenue .....	\$1,236,368	\$ 1,166,392
Total Margins .....	\$ 513	\$ 191,929
Cost of Power .....	\$1,023,263	\$ 1,027,263
KWH's Purchased.....	\$23,817,705	\$ 15,591,845
Capital Credits Paid to Estates ..\$	5,182	\$ 2,116
Average outage time in minutes per member	0	0

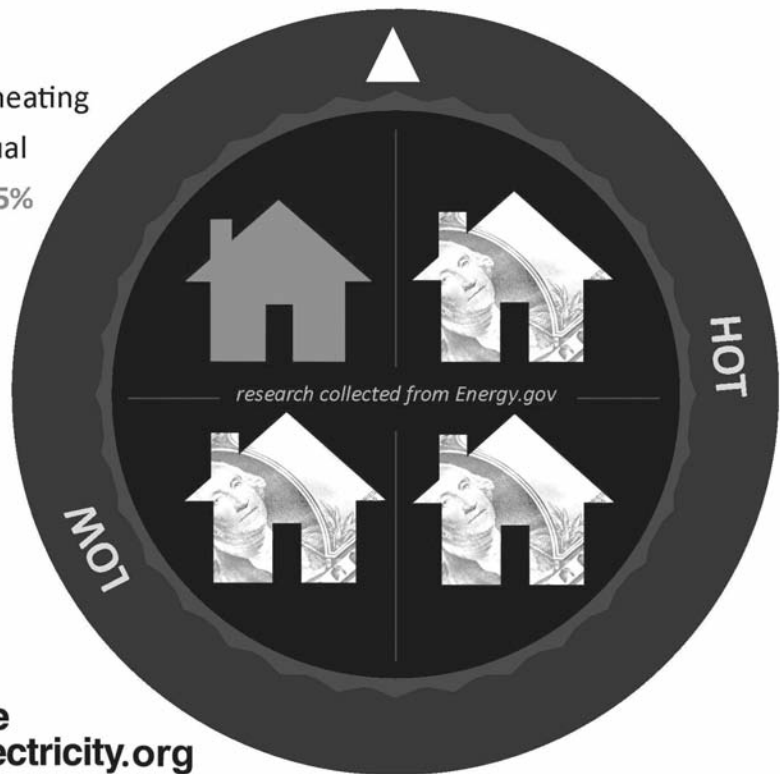
## YEAR TO DATE COMPARISON

	DECEMBER 2013	DECEMBER 2014
Total Revenue .....	\$13,636,983	\$14,325,988
Total Margins .....	\$1,140,335	\$ 825,752
Cost of Power .....	\$9,702,119	\$10,470,889
KWH's Purchased .....	144,849,402	146,387,508
New Service Connections .....	62	71
Customers Served .....	5,272	5,321
Capital Credits Paid to Estates ..\$	101,896	\$ 66,549
Average outage time in minutes per member	156	175
Miles of Line		
Overhead .....	2,323	2,327
Underground .....	264	270

Save \$. Dial down to **120° F.**

Water heating can equal up to **25%** of your home's energy use.

Safe Electricity.org



# Avoid getting in hot water with your energy bill

Don't find yourself in hot water with your energy bill. Keep comfortable by making use of water heater efficiency tips that can help you save energy in your home and money on your energy bill.

After heating and cooling, water heating is the largest energy user in most homes. A great way to ensure water heater efficiency is by lowering the set temperature. For every 10 degrees Fahrenheit lowered, you can save three to five percent on your bill. It is suggested to set the water heater temperature to no higher than 120 degrees. This temperature is sufficient for any water heating need and reduces mineral build up. Any hotter could result in scalding.

Install a timer on your water heater for greater efficiency. This timer will activate the appliance to heat the water before major use periods and will shut it off or lower the temperature during times you

do not need hot water.

If your water heater does not have one already, consider purchasing an insulating blanket for it. According to Energy.gov, insulating your water tank reduces standby heat loss by 25 to 45 percent and saves four to nine percent in water heating costs.

A water heater insulation blanket kit (3729016.03 Gregory or Cindy Dally, Falls Radiator Service) is an affordable investment, costing around \$25, and it will pay for itself with the energy it saves. Be sure to check with your utility to see if it offers low cost insulating blankets or rebates.

Here are other ways to save energy and lower your bill with your water heater:

Do not take baths. Instead, take short showers. This reduces the amount of hot water used.

Do not let the water continue to run when you are brushing your teeth, washing your

hands, or doing the dishes. Make it a habit to turn off the water when you are not using it.

Use cold water for laundry. Cold water will clean clothes just as well as warm.

Do full loads in your dishwasher. This reduces the amount of times you need to run the appliance.

Fix faucet leaks and install low-flow fixtures. With this, Energy.gov estimates 25 to 60 percent savings on your water heating bill.

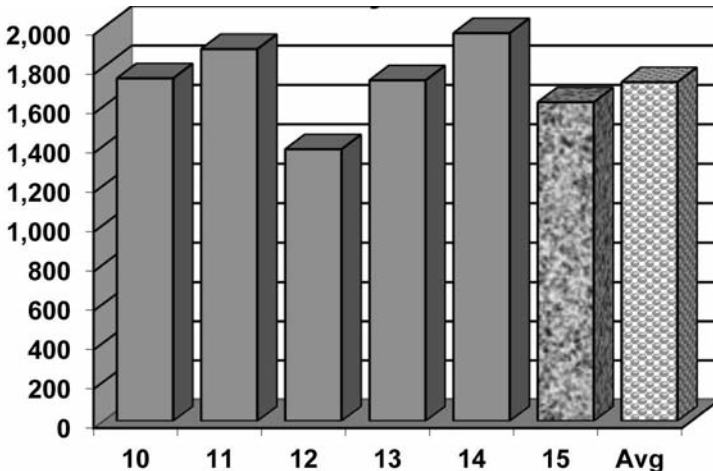
If you are shopping around for a new water heater, look for Energy Star products to ensure greater efficiency. They can use up to 70 percent less energy and can last up to 10 times longer than other products, according to Energy Star. Also check with your utility to see if any rebates are available.

For more home efficiency tips visit: [EnergyEdCouncil.org](http://EnergyEdCouncil.org)

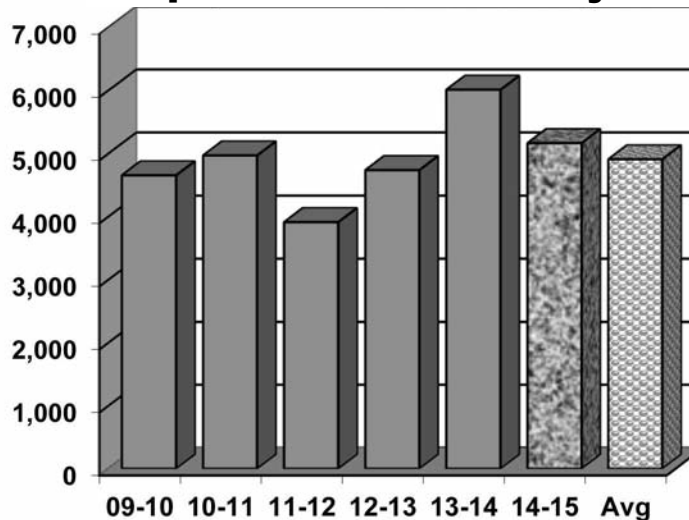
# DEGREE DAYS

To determine degree days, you must calculate the daily mean temperature for the time period you are measuring. Degree day computation is based on the assumption that a building does not require any heat if the outside temperature averages 65 degrees during a 24-hour period. To obtain a degree day figure, the high temperature and the low temperature for the day are added and the total divided by two. That figure is then subtracted from 65. For example, if the high temperature was 30 degrees and the low temperature 10 degrees, the figure would be 30+10=40; 40/2=20; 65-20=45. This would be a 45-degree day. The higher the degree day figure, the more heat required to warm your home.

## DEGREE DAYS January, 2015



## Year To Date September 1 to January 31



EAGLE SQUARE

HOT STUFF Foods

## After School Special

Personal Pizza, 2 Bread Stix & Can of Pop

Monday - Friday **\$4.99**  
3-4:30 pm

We now sell Hunting & Fishing Licenses

405 Bridge St. Red Lake Falls 253-2995

Goodman

Air Conditioning & Heating

THANK GOODNESS FOR GOODMAN

Don't choose between high-quality or affordable heating. Get both with any Goodman® brand gas furnace.

WHY PAY MORE? BETTER VALUE \*\*\*\*\* ADDITIONAL QUALITY



Wilcox PLUMBING & HEATING

Red Lake Falls 218-253-4347

BILL H. MOSER MASTER PLUMBER 058011PM

BILL J. MOSER MASTER PLUMBER CFR 089400285 061208PM

Thank goodness for Goodman®



## Farmers Union Oil Company

Thief River Falls 218-681-3512



- Fertilizer
- Petroleum products
- Town and country deliveries
- Tires, batteries, accessories
- Farm supplies

## WILCOX PLUMBING AND HEATING, Inc.

RED LAKE FALLS

Plumbing/Heating/Air conditioning

BILL H. MOSER, Master Plumber  
License No. 1770PM  
BILL J. MOSER, Master Plumber  
License No. 6039PM  
JASON JOHNSRUD, Master Plumber  
License No. 064717PM  
Refrigerant Certified No. CFR089400285



- In-floor heating • Oil furnaces
- Pressure systems • Gas furnaces
- Electric heat pumps

FREE ESTIMATES  
COMPLETE SALES  
AND SERVICE

218-253-4347



The  
Head-Quarters  
Hair and  
Tanning Salon

HAIRSTYLING  
FOR MEN AND  
WOMEN

PARK PLACE MALL  
RED LAKE FALLS, MINNESOTA

218 253-4223

Security  
STATE BANK



- Operating loans
- Vehicle loans
- Farm real estate loans
- Consumer loans

"We appreciate your business."

218-796-5157  
Fax 218-796-5158

anthony.holthusen@ssboklee.com



Advertise  
here for just  
\$30/month!  
  
Call  
218-253-2594  
to inquire

## VOLTS AND JOLTS FEATURE OF THE MONTH

# In 1940 rural electricity became a reality

By Evelyn Glass

Farmers looked forward to the day when rural electricity would become a reality. After months of hearing of the plans and watching the workers build the lines to carry electricity to the rural area, they looked ahead to the day when they would have access to the service.

For Ernest and Lydia Seeger that day came in 1940. When they moved to California their son, Wally, a single man, assumed the responsibility of the farm. His plan was to continue farming.

In October of 1942 Wally's plans were changed when he received notice that he was to be drafted into the army. He was engaged to Marie Waldal and they decided to marry before he had to leave for the army. With the date for him to

enter the army just three weeks away, they quickly planned a small wedding and a honeymoon.

To their surprise when they returned from shopping for the wedding Wally's father said, "I just got a call from the draft board. They said Governor Stassen is in Washington, D.C. and called to tell the draft board he helped to get a bill passed stating that the last son on the farm would be granted a deferment." This meant Wally would not be drafted. However, they decided to go ahead with their original plans and were married on Oct. 14, 1942.

With this change in their plans, Wally and Marie established their home on the farm west of Red Lake Falls and continued to live there throughout their marriage.

Wally passed away on June 30, 2001. Marie continues to live on the farm in the same house where they lived and raised their four children. Daughter Kaye lives in Philadelphia. Mike, Steve and Brad all live near Red Lake Falls. It is Marie's joy to have her children, grandchildren and great-grandchildren live near her and to have those from Philadelphia come often to visit. Today Mike and Steve continue to farm with their headquarters on the home farm.

In 1976, Wally and Marie built a cabin on their farm. Drawing on her Norwegian heritage Marie chose to name the cabin "The Hytta." Translated into English it simply means "cabin." At The Hytta Marie taught painting classes for 30 years. The medi-

ums were oil and acrylics and featured both Norwegian Rosemaling and folk art from fifteen different European countries.

She says she has lost count of how many students she was privileged to have in her classes. Each year she would have a "boutique" and would offer for sale many of her painting projects and those of her friends and students.

Marie appreciates antiques, especially those that have been in the family. She has been creative in using them to decorate her home, often with Rosemaling and folk painting to add to their attractiveness. One of the pieces is a corner cabinet (pictured below). The lettering on the front tells a story:

"There is a little village where the people love God and

one another. Each is free to follow his heart, so they rejoice in work sing at play. They wonder, imagine invent useful things and create beauty. They laugh and cry build, plant, harvest, tend the flock and other critters. They live peacefully, joyfully, in tune with nature. And they live happily ever after in a small village called home." Jean Wortham, Author

Bethany Lutheran Church has been the church home for Wally and Marie all these years and a very important part of their family life. Marie was one of the leaders who began the tradition of the fall Norwegian-style Smorgasbord that has been held every year since 1948 when their church was organized. It is an event anticipated by many and is well attended with people coming from many miles to enjoy sup-

per and fellowship.

In addition to the traditional role of wife of a farmer, Marie worked off the farm for several years. The office of AAA (Agricultural Adjustment Act) which later became the ASCS (Agriculture Stabilization and Conservation Service) office, serving farmers, was her place of employment. Similarly, Wally, was employed by American Crystal full time for 24 years.

When asked what part Red Lake Electric had in making their lives better, Marie spoke of her appreciation for the service that has been a part of the success of the farm. The consistent dependability of having electricity available made their years of farming easier and contributed to their quality of life.



Longtime Cooperative member Marie Seeger has many antique items displayed in her home, including this decorative corner cabinet.



Members of the Seeger family include, from left, Kaye, Steve, Marie, Mike and Brad.



The Hytta, which means "cabin" in Norwegian, is where Marie taught painting lessons for 30 years.

## Bray-Gentilly Mutual Insurance Co.

Locally Owned and Operated  
Serving Policyholders Since 1900

218-683-3200

2017 Hwy. 59 SE • P.O. Box 592  
Thief River Falls, MN 56701

INSURANCE FOR  
FARMS, HOMES  
AND PERSONAL  
PROPERTY

TELEPHONE US FOR AN  
AGENT NEAR YOU!

Email:  
1bodyrlf  
@hotmail.com



1BODY  
HEALTH & FITNESS

Park Place Mall,  
Red Lake Falls  
253-2111

Fitness Center  
Hours:  
5 a.m.-Midnight Daily

www.1bodyhealthandfitness.com

## Kilen's Custom Cleaners

- Commercial
- Residential
- Custodial



Specializing in  
Water, Fire & Soot Restoration

Jordan Kilen - Owner  
(218) 686-2591

www.kilencustom.com

— Free Estimates —

"Achieving excellence  
one customer at a time"

## Want to cut your heating cost by up to 50%?

Buy a YORK Affinity  
heat pump today!



## GROVE MECHANICAL, INC.

Your hometown heating &  
air conditioning team!  
Serving Crookston and the surrounding  
communities for 30 years.  
(218) 281-3863

OFFICE PHONE  
253-2168

OUTAGE PHONE  
253-2200

1-800-245-6068



Red Lake Electric  
Cooperative, Inc.

One of the Minnesota Power Systems



Pictured are some of the Red Lake Electric members who attended the District 7 meeting held on Jan. 26 at Oak Park Church in rural Oklee.

# From the Mail Bag

Dear RLEC,

Thank you so much for the clock-radio I won at the District Meeting.

Lana Nelson  
Oklee

Dear RLEC,

Thank you for the tea cup and saucer shelf I won at the District Annual Meeting.

Muriel Mandt  
Oklee

Dear RLEC,

Thank you for the clock radio I won at the District Meeting.

Ginny Armstrong  
Thief River Falls

Dear RLEC,

Thank you for the very informative meeting you put on at St. John School. The pie and prizes were also very much appreciated.

Sincerely,  
Myron and Ila  
Anderson  
Thief River Falls

Corinne Swenson  
of Middle River  
(photo at right)  
won a George  
Foreman Grill at  
the District 2  
meeting held Jan.  
27 in Holt.



Jerome Sorenson, Thief River Falls, was the winner of a clock radio at the District 2 meeting which was held at Nazareth Lutheran Church, Holt.

## Energy Efficiency Tip of the Month



Did you know that 90 percent of the energy used to operate a washing machine comes from using hot water? A simple switch from hot to cold can save a great deal of energy! Also, consider air drying or even line drying to save even more household energy.

Source: U.S. Department of Energy

Just When You Think It Can't Get Any Better...



# eDeposit

Deposit checks from  
ANYWHERE...  
All from your cell phone!  
It's free and as easy  
as snapping a picture



This application is available for iPhone and Droid phones, and deposits can be made to either checking or most savings accounts. For more information visit any of our Ultima Bank offices, or our website: [ultimabank.com](http://ultimabank.com)



Ultima Bank Minnesota  
Winger • Fosston • Bemidji • Plummer



## AUTO PAY OFFERED BY RLEC

Red Lake Electric Cooperative is pleased to offer you Auto Pay. Now you can have your monthly energy bill paid automatically from your checking or savings account. You can receive the Auto Pay service by completing the Auto Pay sign-up sheet and returning it to Red Lake Electric Cooperative.

The Auto Pay service is free of charge. Not only is this service free, you will eliminate the expense of writing a check, postage to mail your payment and no more late payment penalties because your bill will be paid on time, every month, for you.

Your payment will be automatically made for you on the 5th of each month. If the 5th falls on a weekend or holiday, the payment will

be made on the next business day. You will continue to receive your monthly energy bill as you have in the past, indicating the amount that will be withdrawn from your bank account. The proof of your payment will appear on your bank statement and your next month's energy bill statement.

**Continue to pay your monthly bill until you are notified on your bill that the Auto Pay has been set up for you.**

If you have any questions about the Auto Pay please call RLEC at 800-245-6068 or 218-253-2168.

## Another Great Choice for Good Health



Carly Haas, PA-C is available  
Monday-Friday  
for patients of all ages at  
RiverView Clinic-Red Lake Falls.

Same day appointments  
are available, call  
218.253.4606.



RIVERVIEW HEALTH  
Exceptional People. Exceptional Care.

Park Place Mall, Red Lake Falls

## AUTO PAY SIGN-UP SHEET

I authorize Red Lake Electric Cooperative (RLEC) and the bank listed below to initiate variable entries to my checking or savings account. This authorization remains in effect until I notify RLEC in writing to cancel it in such time as to allow RLEC to act on it.

RLEC ELECTRIC ACCOUNT # \_\_\_\_\_

NAME (PRINT) \_\_\_\_\_

ADDRESS \_\_\_\_\_

TELEPHONE # \_\_\_\_\_

NAME OF FINANCIAL INSTITUTION \_\_\_\_\_

CHECKING ACCOUNT # \_\_\_\_\_

SAVINGS ACCOUNT # \_\_\_\_\_

SIGN HERE TO AUTHORIZE \_\_\_\_\_

Please return this authorization form with a blank, voided check to:  
Red Lake Electric Cooperative, P.O. Box 430, Red Lake Falls, MN 56750

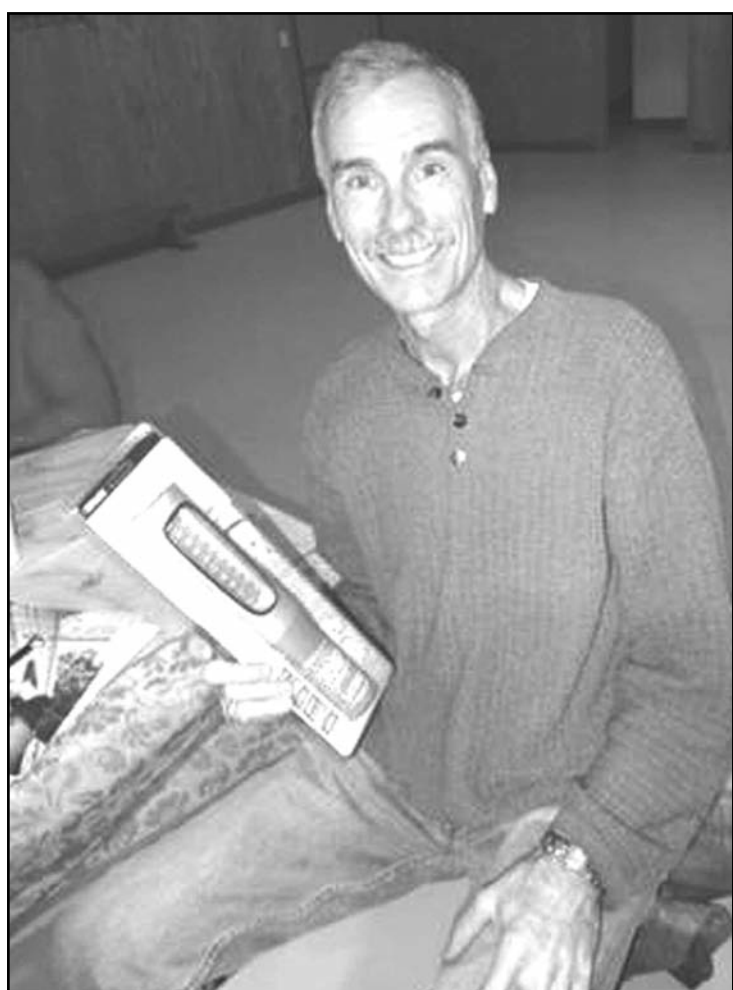




Pictured are members of Red Lake Electric Cooperative who attended the District 8 meeting held on Jan. 27 at St. John's Lutheran School, Thief River Falls.



Muriel Mandt, Oklee, was the winner of an oak shelf at Red Lake Electric's District 7 meeting held Jan. 26 in Oklee.



John Mattson, Thief River Falls, was the winner of a LED flashlight at Red Lake Electric's District 8 meeting which was held in Thief River Falls.

## Install off-peak electric heating equipment and receive off-peak incentive

Any new off-peak electric heating equipment purchased and installed after May 1, 2014 qualifies for an off-peak electric heat incentive.

Members will receive \$20 per kilowatt (kW) for qualifying electric heating equipment with a maximum incentive of \$600. The electric equipment must be part of an off-peak heating system with a qualified backup heating source. The equipment must be hard wired.

Heat pumps may also qualify for the incentive. Air-source

heat pumps will receive a \$100 per ton incentive. Ground-source heat pumps will receive a \$200 per ton incentive. Heat pumps do not have to be controlled as part of an off-peak system. Any resistance or strip heat as part of a ground-source heating system must be controlled. The maximum incentive for heat pumps is \$600.

This off-peak electric heat installation incentive is in addition to the conservation incentives offered as part of the Cooperative's Power Savers Program.



Electric Boiler-Slab Storage

In the wake of rising and fluctuating fossil fuel prices and with this electric heating equipment incentive, now is a great time to install off-peak electric heat.

Equip your home (3927002.05 Kenneth Asp) or place of business with a dual-fuel heating system and be set for heating seasons of the future. Call Red Lake Electric Cooperative at 253-2168 or 800-245-6068 for more information.



Electric Plenum Heater

### Qualifying electric heating equipment

- Radiant Underfloor Heat
- Slab Storage - Electric Cable
- Slab Storage - Electric Panels
- Slab Storage - Electric Boiler
- Air-Source Heat Pump
- Ground-Source Heat Pump
- ETS Room Unit

- Baseboard Heater
- Boiler
- Cove Heater
- Forced Air Furnace
- Plenum Heater
- Unit Heater
- ETS Furnace



John Erickson, Thief River Falls, was the winner of an electric knife at Red Lake Electric's District 8 meeting held Jan. 27 in Thief River Falls.



### Ice Dam Prevention

This winter, take these steps to avoid costly and potentially dangerous ice dams:

- Keep your attic well ventilated. The colder the attic, the less melting and refreezing you'll have on your roof.
- Keep the attic floor well insulated to minimize the amount of heat rising through the attic from within the home.
- As an extra precaution against roof leaks, have a contractor install a water-repellent membrane under your roof covering.

**Red Lake County Insurance**  
Red Lake Falls, MN  
218-253-2177 • rlc@gvtel.com  
www.redlakecountyinsurance.com

**Auto-Owners Insurance**  
Life Home Car Business  
The "No Problem" People®

12997 (11-13)

### Don't want to write a check? Want to save on postage?

Red Lake Electric has a new payment option to make paying your bill easy. This service is free. Sign up is simple. Go to [www.redlakeelectric.com](http://www.redlakeelectric.com) and click on the Bill4U icon. There is now an app for your smartphone. Just go to your app store and download the free app.

Bill4U allows you to make your payments 24 hours a day directly from your checking or savings account eliminating the cost of the check and postage. Bill4U allows you access to your billing statements at any time. Bill4U allows you to view and compare your kilowatt-hour usage.

If you have any questions or need more information, visit our web site or call Red Lake Electric 800-245-6068.

**Bill4U<sup>SM</sup>**  
An electronic bill presentment and payment service

**LOOK  
UP  
POWER LINES MAY  
BE OVERHEAD**



**Red Lake Electric Cooperative, Inc.**

*One of the Minnkota Power Systems*

Phone  
Toll-free  
Fax  
After-hour outage  
Office hours  
E-mail:  
Web site

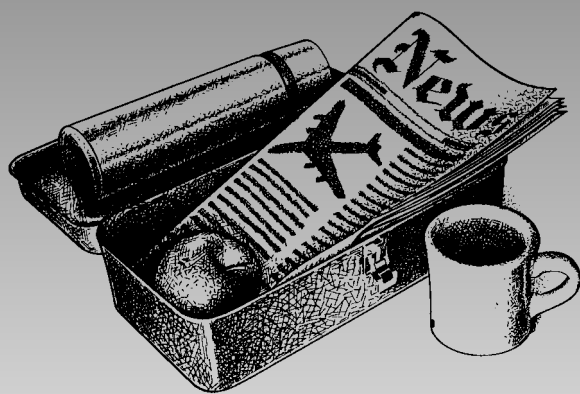
218-253-2168  
1-800-245-6068  
218-253-2630  
218-253-2200  
Monday-Friday, 8:00-4:30  
redlake@minnkota.com  
www.redlakeelectric.com



**Call Before You Dig - Gopher State One Call • 1-800-252-1166**

P. O. Box 430 • 412 International Drive SW • Red Lake Falls, MN 56750-0430





# Your key to buy, sell or trade anything is the CLASSIFIEDS

**The members are invited to use this FREE WANT AD service.**

If you have anything to trade or sell, just drop a card to Red Lake Electric Cooperative, Box 430, Red Lake Falls, MN 56750.

**KICK DIRT**  
REBATE

**DON'T MISS THE KICK DIRT REBATE ON FIRESTONE RADIAL TRACTOR AND DESTINATION FARM RADIAL IMPLEMENT TIRES!**

January 1, 2015, through March 31, 2015, get money back on top-performing Firestone farm tires - available only at your Certified Firestone Farm Tire Dealer.

- \$50 back on selected Destination Farm AD<sup>2</sup> Technology implement radials\*\*
- \$100 back on select standard tractor radials\*\*
- \$125 back on select AD<sup>2</sup> radial rear tractor radials\*\*

Offer limited to 16 eligible Destinations Farm radial implement tires and any combination of 16 eligible standard radial and AD<sup>2</sup> radial rear tractor tires per address.

Your Certified Firestone Farm Tire Dealer has the tires you want and the "Kick Dirt" rebate form for your money back. Visit FirestoneAg.com for Certified Dealer locations. Rebate paid with a Firestone Prepaid MasterCard®

**Triangle Tire Sales & Auto Services**  
701 Main Ave S  
Red Lake Falls  
218-253-2817

**Firestone**  
FARM TIRES  
THE LEADER IN THE FIELD

**KEZAR**  
Thief River MUSIC Full Line Music Store Since 1922!  
BUY • SELL • TRADE

315 Duluth Ave. N., Thief River Falls, MN 56701

JD Kezar, Owner

LESSONS • SALES  
RENTALS • BUY  
SELL • TRADE  
INSTRUMENT REPAIR  
RECORDING STUDIO

- Coffee of the Day
- Espresso
- Snack Bar

Weekdays 10am - 7pm & Saturdays 10am - 5pm

218-681-2148 (w) [www.kezarmusic.com](http://www.kezarmusic.com)  
218-688-1141 (c) [kezarmusic@mncable.net](mailto:kezarmusic@mncable.net)

**Turn your junk into cash!**

[www.luckentrucks.com](http://www.luckentrucks.com)  
State certified scale  
get paid what you deserve

Car Crushing & Tin Bailing  
Lugger & Container Services

We buy anything from cars to combines, including the kitchen sink and everything in between...

**We want your scrap!**

- Prepared Steel
- Unprepared Steel
- Unstripped Motors
- Tin
- Car Bodies
- Batteries
- Brass
- Alum. Trans.
- Radiators
- Die Cast
- Stainless Steel
- Aluminum
- Copper
- Lead

**You call. We haul.**  
**Call 1-800-874-4107**  
\$\$\$ Cash \$\$\$ Cash \$\$\$ Cash \$\$\$

**Lucken Corp.**

23125 430th St. SE, Winger, MN 56592  
[jeff@luckentrucks.com](mailto:jeff@luckentrucks.com) or [john.lucken@luckentrucks.com](mailto:john.lucken@luckentrucks.com)

**SCHAFFER**  
ELECTRIC

**BRIAN SCHAFFER**  
218-289-5430  
CELLULAR

**MIKE SCHAFFER**  
218-289-5431  
CELLULAR

16483 120th Avenue SW  
Red Lake Falls, Minnesota 56750  
Office 218-253-2497

COMMERCIAL TRENCHING RESIDENTIAL FARM

**Carpet ETC.**

of St. Hilaire, MN

Flooring to Fit Every Lifestyle  
Carpet, Vinyl, Ceramic, Laminate

Quality Flooring at a price you can afford.

310 Broadway • St. Hilaire, MN • (218) 964-5555 • M - F 9-5:30 & Sat 9-3 • Anytime By Appointment

**Real Estate**

**EXCELLENT BUY!**  
www.sollie.net

**JUST LISTED!**  
www.sollie.net

**#4043 - Comfortable Home at a Comfortable Price!** The low price of \$36,900 will bring you to look at it, the coziness of this 2 bedroom home with the huge double lot will cinch the deal! Call today for details.  
**SOLLIE REALTY**  
Fosston, MN  
218-435-1525  
[www.sollie.net](http://www.sollie.net)

**#4039 - Request For New Address!** That's all you will need to do before you move in! Perfect size, excellent condition all come together at a fantastic price, it's time to make this your new home. Call today for details.  
**SOLLIE REALTY**  
Fosston, MN  
218-435-1525  
[www.sollie.net](http://www.sollie.net)

**Radneicki's Cleaners**  
Carpet & Upholstery Cleaning

Dry Up Wet Basements

Smoke Damage

Furnace Ducts

Dryer Vents

Upholstery

Carpets

Greg  
(218) 681-7679

**Wright's**  
EVERYTHING  
CONSIGNMENT

*Reduced Prices  
Not Reduced Quality*

Like Us On

**Check our weekly sales!!**

**111 MAIN AVE, DOWNTOWN RED LAKE FALLS**

Open Monday through Saturday  
10 a.m. - 7 p.m. **253-2091**  
Sunday 11 a.m. - 5 p.m.

**Midwest Roofing**  
Residential and Commercial

Licensed • Bonded • Insured  
FREE ESTIMATES

20061 Center St E (218) 681-3879  
Thief River Falls, MN 56701 (218) 686-4475

**TR SALVAGE INC.**

702 Dawn Ave.  
Thief River Falls, MN 56701  
218-681-8221 • 1-800-950-9917

Email: [sales@trsalvage.com](mailto:sales@trsalvage.com) • Website: [www.trsalvage.com](http://www.trsalvage.com)

NEW AND USED FARM EQUIPMENT PARTS

**DON'S**  
307 First Street East • TRF  
Across from Pennington Square  
**SEWING & VACUUMS**  
Sales & Service • NEW & USED  
Small Appliance Repair

New Warranty and Service Center  
for Heat Surge Heaters  
Serving the area since 1992  
681-8664

**KM Transmission**  
And Repair

Quality • Experience  
Dependability • Honesty

**Fair Prices**

Its all just that simple. Keith Moen

Mon. - Fri. 8:00 am to 5:00 pm  
Sat. by appointment

**(218) 681-4250**  
616 Davis Ave. N, Thief River Falls

**DON'S MACHINE SHOP**  
ASE CERTIFIED REBUILDERS  
ALL GAS AND DIESEL ENGINES

- Automotive •Industrial
- Marine •Agricultural
- High Performance
- Vintage Auto
- Heavy Duty Diesel

CALL FOR ESTIMATE!  
INSTALLATION AVAILABLE  
FOSSTON, MN

218-435-6379 or  
1-800-448-1518

**PRICE EXAMPLES:**  
•GM 350 \$1,315 - \$1,419  
•GM 6.5 Diesel with new block \$5,330  
•Ford 7.3 Diesel Powerstroke \$4,200  
All prices are with exchange on a rebuildable core.

**Chuck's Painting**

26 YEARS' EXPERIENCE.  
REASONABLE RATES.  
INTERIOR/EXTERIOR  
FREE ESTIMATES

**218-253-4007**

**Evans Scrap & Steel, Inc.**

218-681-3488 • Toll Free 1-800-906-3488  
13203 190th St. N.E. • Thief River Falls, MN

Winter Hours:  
7:30 - 4:30  
Monday-Friday

Electrical Contractor

Shop: (218) 253-4123  
Home: (218) 253-4127

**KEN'S ELECTRIC, INC.**  
Red Lake Falls, Minnesota 56750  
"We Service Our Work"

Contact Us For All Your Electrical Needs!

Allen Remick - Cell: (218) 689-0313

Red Lake Electric Cooperative

**Want Ad Order Form**

Use this handy form to submit your want ads.

**PLEASE PRINT.**

Mail or bring your ads to the RLEC office by the tenth of the month. Commercial ads are 10¢ per word with a minimum charge of \$4 per insertion.

Member want ads are FREE. One want ad per member per month.

**Please PRINT . . .**

Your Name, Address and Phone Number. Mail with your power bill payment, if you prefer, or fax to 218-253-2630.

**AFTER-HOURS OUTAGE PHONE 218-253-2200**



# Give yourself some credit

**By Allison Goldberg**  
A credit score is a number that indicates a person's credit-worthiness—the higher the number, the more likely it is a person will repay his or her debts. And the lower the score, the less likely a person is to repay those debts.

These scores are used to evaluate the potential risk of doing business with a person. A low credit score can adversely impact your ability to secure a loan or line of credit, rent a home, or it could increase your insurance premiums, among other repercussions.

It's important to understand how your credit score is determined and what steps you can take to ensure your score is as high as possible given your credit history so that, when you do need credit, you can obtain the best possible interest rates and insurance premiums.

The FICO score was introduced in 1989 by FICO (then called Fair, Isaac, and Company) and is now used by the majority of banks and credit grantors. An approximate breakdown of the FICO score the exact formula is proprietary is:

- Payment history: 35 percent
- Debt burden: 30 percent
- Length of credit history: 15 percent
- Types of credit used: 10 percent
- Recent searches for credit: 10 percent

In order to improve your score it's essential that you make payments on time, pay down your debt, use not only revolving debt (e.g. credit cards, open lines of credit) but also installment debt (e.g. mortgage, student loans, car loans), when appropriate, and rarely apply for new credit. The length of your credit history can improve with time alone.

Thanks to the Fair and Accurate Credit Transactions (FACT) Act of 2003, (1130004.06 Donald Peterson) every legal U.S. resident is entitled to a free annual copy of their credit report from each of the three main credit reporting agencies, Experian, Equifax and TransUnion, using the website annualcreditreport.com or by phone at 877-FACT-ACT.

While the reports won't contain your numerical credit score, you can buy the score from each

agency for a fee of \$7.95 if you wish. Some banks and credit card issuers provide customers with their credit score for free; you may wish to contact your bank or credit card companies to inquire.

Review your credit reports for errors. Any errors may be lowering your credit score, and you should request an investigation of errors as soon as possible.

The Federal Trade Commission provides detailed information on its consumer website (consumer.ftc.gov) about what you should and should not include in your letters to the credit reporting company and the creditor who reported the disputed information. Credit

reporting companies must investigate disputes within 30 days – unless they consider your request frivolous, so stick to the facts, provide copies of supporting documents (not originals) and include a copy of your credit report with the disputed items circled.

If the credit reporting companies find that the information you challenged is incorrect, they must remove it and the creditor will have to notify the national credit reporting companies, who will have to correct your credit file. Once they've investigated, the credit reporting company must provide the results in writing to you, too, and a new copy of your credit report for free, if the findings resulted in

changes to your report. You can also ask that the credit reporting agency send a corrected credit report to anyone who received a copy within the past six months and to anyone who received a copy within the past two years for employment purposes.

Just remember that accurate negative information can only be removed by the passage of time. Accurate negative information can remain on your credit report for seven years, and bankruptcy information can remain for 10 years.

For more resources on improving your credit score and other financial issues, you can visit the FTC (consumer.ftc.gov) for trustworthy information.

*Prom Preview Blowout!*  
Now through February

**All prom dresses  
15 - 75% off!**

**20% off  
jewelry, shoes, and garter  
with dress purchase!**

**Shop Local  
& save tax!**

Sizes  
0 - 26

*Stop by today for the best selection  
& discover your dream dress!*

**Beautiful Beginnings**  
Bridal & Boutique

 Like us on Facebook

**218-681-3100**  
Downtown Thief River Falls



**PARK AVENUE**  
*School of Cosmetology*

**A Career  
in a year!**

**3 Locations \* 3 Programs**

**\*Park Rapids**

**\*Cosmetology**

**\*Brainerd**

**\*Nail Technology**

**\*Alexandria**

**\*Esthetics**

**Classes Starting Monthly**

**Admissions**

**Samantha**

**218-732-2962**

**parkavenuecosmetology.com**



**Financial Aid**

**Kelly**

**218-732-2962**



**Gerbracht Logging, Inc.**

**Looking to buy  
standing timber  
and hybrid poplar  
plantation wood.**

Fully insured with excellent references  
**Rodney Gerbracht: 218-766-2770**

Our modern technology and personalized service help our clients succeed in every season.


**We make crop insurance simple.**

You can rely on us when nature strikes. QBE NAU is an industry leader and QBE insurance companies are rated "A" (Excellent) by A.M. Best. From MPC1 to crop hail, we'll help you choose the customized coverage that's right for you. Together, we can help you recover from a devastating crop loss.

**Contact us for more information.**

NAU Country Insurance Company is an equal opportunity provider. QBE and the links logo are registered service marks of QBE Insurance Group Limited. NAU is a registered service mark of NAU Country Insurance Company.

Call Nick at Red Lake County Insurance today.  
218-253-2177





**RESIDENTIAL Rebates**

**Residential Prescriptive Program**  
This program is designed to provide end-use consumers with a quick and easy way to choose high-efficiency equipment at the time of normal equipment replacement or major renovations. Some of these technologies include:

Lighting (Must be ENERGY STAR® or DesignLights Consortium™ approved.)		
ENERGY STAR CFL Lamps		\$2/bulb Max. 12 per customer
ENERGY STAR LED Screw-In Bulb	In place of 40-60W incandescent.	\$4/bulb
ENERGY STAR LED Screw-In Bulb	In place of 65W or greater incandescent.	\$8/bulb
Maximum of 12 per customer for LED screw-in bulbs.		
ENERGY STAR LED Recessed Downlights	Complete fixtures or replacements kits.	\$8/unit
LED Outdoor Fixtures	LED fixture Wattage of <40 Watts. Must operate on a photocell and be DesignLights Consortium approved.	\$40/fixture
LED Outdoor Fixtures	LED fixture Wattage of >40 Watts. Must operate on a photocell and be DesignLights Consortium approved.	\$80/fixture
Appliances (Must be ENERGY STAR approved.)		
ENERGY STAR Refrigerator		\$25/unit
ENERGY STAR Refrigerator (with recycling of old refrigerator)		\$50/unit
ENERGY STAR Freezer		\$25/unit
ENERGY STAR Freezer (with recycling of old freezer)		\$50/unit
ENERGY STAR Clothes Washer		\$50/unit
ENERGY STAR Clothes Dryer		\$50/unit
Electric Water Heater	Minimum 80-gallon total capacity, EF ≥0.91. Must be controlled under the utility's load management program.	\$150/unit
Engine Block Heater Timer		\$10/unit
Heating, Ventilation Air Conditioning (HVAC) Measures		
Tune-Up for Residential Central A/C	Not valid on window units	\$25/unit
Tune-Up for Residential Air-Source Heat Pumps (ASHP)	Excludes mini-split ductless ASHPs	\$25/unit
ASHP	ENERGY STAR or 14.0 SEER / 8.2 HSPF	\$400/unit
Supplemental Heating Source for ASHP	Must modulate to allow ENERGY STAR-rated ASHP to operate down to 5°F, and be on load control	\$500/unit
Furnace (Air Handler) with ECM Blower	Furnace with ECM blower	\$150/unit
Mini-Split/Ductless ASHP	15 SEER	\$500/unit
Programmable Thermostat		\$25/unit
Geothermal Measures		
Ground-Source Heat Pump Open Loop <135,000 BTUH @ 59°F	16.2 EER /3.6 COP	\$200/ton Max. incentive \$2,500/home
Ground-Source Heat Pump Closed Loop <135,000 BTUH @ 77°F	14.1 EER /3.3 COP	\$400/ton Max. incentive \$5,000/home
New installations only. Must be installed by a qualified, insured contractor. Must be the primary heating source for the home and be on a list of prequalified units. Water-to-water systems need the manufacturer's specifications indicating the equipment meets incentive requirements.		
Replacement Geothermal		
Ground-Source Heat Pump Open Loop <135,000 BTUH @ 59°F	16.2 EER /3.6 COP	\$100/ton Max. incentive \$1,250/home
Ground-Source Heat Pump Closed Loop <135,000 BTUH @ 77°F	14.1 EER /3.3 COP	\$200/ton Max. incentive \$2,500/home
Incentive available for failed geothermal equipment only. Entire indoor unit replacement is required to receive incentive. Replacing only the compressor will not qualify for the incentive. Equipment being replaced must fall outside of any warranty period to receive incentive. Invoice showing proof of purchase must be attached.		

**ARCTIC CAT** **ARCTIC CAT** **ARCTIC CAT** **ARCTIC CAT** **ARCTIC CAT**

**END OF SEASON SPECIALS**

**25% OFF** **ALL REMAINING IN STOCK WINTER WEAR**

**Season "Best" Pricing On Remaining New Arctic Cat Snowmobiles**



**Area's Best Selection of "Pre-Owned" Snowmobiles**



**1412 3rd St. W. Thief River Falls, MN (218) 681-1007 • 800-826-5403**

**Hours: Monday - Friday 9 a.m. - 5:30 p.m. • Saturday 9 a.m. - 1 p.m.**

**WWW.RVSPORTS.COM** **WWW.RVSPORTS.COM** **WWW.RVSPORTS.COM**