



# Volts and Jolts

Published monthly for the members of  
**RED LAKE ELECTRIC COOPERATIVE, Inc.**

*One of the Minnkota Power Systems*

SERVING THE FOUR-COUNTY AREA OF MARSHALL, PENNINGTON, RED LAKE AND POLK

VOL. 46 – NO. 05

RED LAKE FALLS (RED LAKE COUNTY), MINNESOTA 56750

MARCH 2011

## 2010 Annual Report



# Welcome

to the **73rd** Annual Meeting of the Membership of

## Red Lake Electric Cooperative, Inc.

**Wednesday, March 30, 2011**  
Imperial Room, Ralph Engelstad Arena  
Thief River Falls, Minnesota

9:00 a.m. Registration begins  
Free coffee and doughnuts  
10:00 a.m. Entertainment .....Vernon Rogalla  
Call to order .....Kelly Lundeen, President  
10:30 a.m. National Anthem .....Kailee Vigen  
Invocation .....Pastor Oliver Urdahl, New Hope Lutheran Church, Newfolden  
Introductions .....Kelly Lundeen

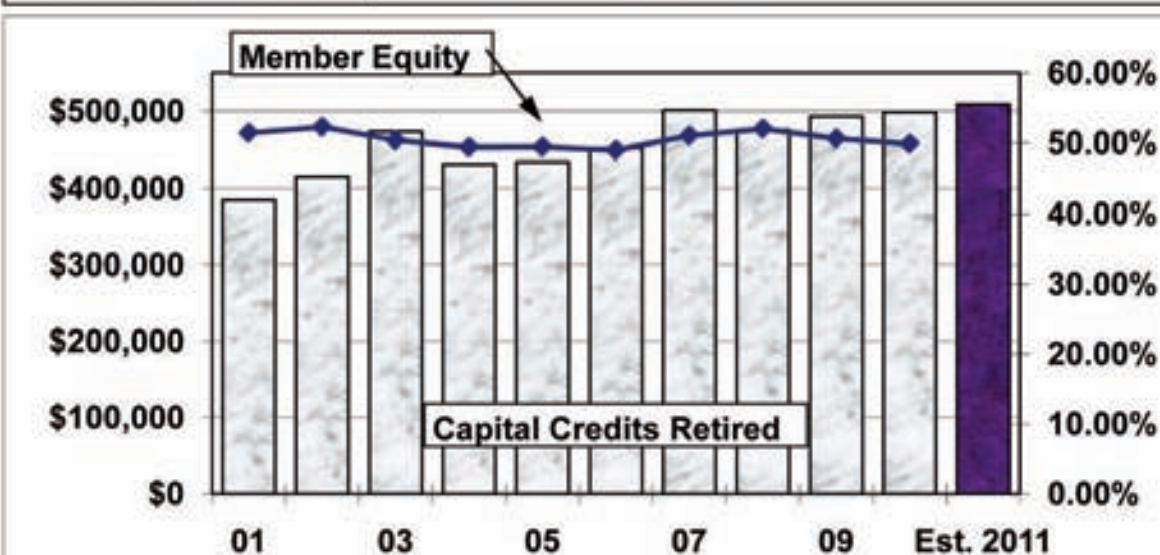
### BUSINESS SESSION

Notice of meeting and affidavit of mailing .....Mark Hanson  
Establishment of quorum .....Mark Hanson  
Minutes of 2010 meeting .....Mark Hanson  
President's report .....Kelly Lundeen  
General manager's report .....Roger Johanneck  
Financial report .....Shirley Bregier  
Minnkota report .....Robert "Mac" McLennan, CEO, Minnkota Power  
Election of directors .....Kelly Lundeen  
Question and answer session  
Adjournment of business session  
Award Presentations  
Awarding of prizes  
Lunch and entertainment

### QUICK TAKES

A look at some statistics from your Red Lake Electric Cooperative

This month, customers will experience one of the benefits of membership or ownership in their Red Lake Electric Cooperative business. Included on your March billing statement, is the General Capital Credit allocation for 2010 and retirement of member equity (Capital Credits) information for 2011. This graph shows the level of member equity or ownership in the Cooperative over the past 10 years and the amount of Capital Credits returned to members annually over the same period. Since the Cooperative began business in 1938, the Cooperative has retired \$9.1 million of Capital Credits to its members.



## Director nominees to be elected March 30

Director nominees Bonnie Christians, Steve Linder, Mark Hanson and Stacy Blawat will be officially elected to the Red Lake Electric Cooperative Board of Directors at the Cooperative's annual meeting. The meeting will be held Wednesday, March 30, in the Imperial Room at the Ralph Engelstad Arena in Thief River Falls.

All four nominees were selected



**Bonnie Christians**  
*District 1*

Bonnie Christians lives in the Gentilly area with her husband, Scott. Together they have five children and 11 grandchildren. Scott works at American Crystal Sugar Company as a shift supervisor.

Working with Stenshoel-Houske Funeral Home, Christians assists families with preplanning and pre-funding funeral arrangements.

Additional part-time employment includes her work with New Horizons, providing services, including mediation, for people addressing issues of custody of minor children, parenting time schedules, divorce, division of marital assets and workplace conflict.

Christians will be completing her third term as a Red Lake Electric Cooperative director currently serving as vice president.

She also serves as an ex-officio member of the Red Lake Electric Trust Board. The Trust Board oversees the Operation Round Up Program.

"It has been an honor to be a part of such an outstanding Cooperative," Christians said. "I look forward to continuing my association and serving the members of Red Lake Electric."



**Steve Linder**  
*District 4*

Steve Linder is a native to the Oklee area and lives with his wife, Donna, on their farm north of Oklee. They have three children: Amber, Ben and Levi.

The Linders are engaged in grain farming, which includes raising wheat, soybeans and corn. During (221030.04 Robert Dahlen) the winter months, Steve spends a good share of his time doing farm equipment maintenance in his farm shop.

Linder has served as a Red Lake Electric Cooperative director for nine years. He also serves as president of the Red Lake County Farmers Union and is a supervisor on the Games Township Board.

as candidates at their respective district meetings that were held in February. There were no additional nominations by petition; therefore, the nominees will be elected to the board. Christians, Linder, and Hanson currently serve as directors and will serve additional three-year terms. Blawat will be fulfilling the final year of a three-year term due to a vacancy with the retirement of current director Robert Olson.

"I find it very interesting to serve as a director of Red Lake Electric Cooperative," Linder said. "I will continue to do my best in serving the Cooperative and its members."

Linder is Red Lake Electric's representative on the Square Butte Power Cooperative Board. Square Butte is the owner of the second coal fired power plant at the Milton R. Young site near Center, N.D.



**Mark Hanson**  
*District 5*

Mark Hanson lives east of Thief River Falls with his wife, Audrey. They have four children: Ehren, Seth, Ingrid and Kjell, and nine grandchildren.

Hanson is engaged in dairy farming, raising replacement dairy heifers. Audrey works as a registered nurse.

Hanson has served as a director of Red Lake Electric Cooperative for six years. He also serves as vice chairman of the Pennington County Township Officers Association and as clerk of Silverton Township. The Hansons are members of Evangelical Free Church of Thief River Falls.

"Electricity plays a vital role in everyone's life, whether in our work, our homes or in our recreation," Hanson said. "Much of the quality of life as we live it today relates directly to the use of electricity."

"I look forward to serving another three years as director of the Cooperative and thank the people of the district for their continued support," Hanson said.

### In this month's *Volts and Jolts*

**Page 2**  
Manager's Comments  
Member Services Office  
Minnkota Minute

**Page 3**  
Recipe Corner  
From the Mail Bag

**Page 4**  
Feature of the Month  
*K9 Country*

**Page 5**  
Line work photos

**Page 6**  
Line work photos  
Annual Meeting Minutes



**Stacy Blawat**  
*District 2*

Stacy Blawat and her husband Bernard reside on their farm east of Holt very near to the farm where Stacy grew up. Their children include Mitchell who lives and works in Thief River Falls, Anthony a senior at Lincoln High School and attending Northland Community and Technical College, Thief River Falls, and Rachel who is in the first grade at St. Bernard's Catholic School in Thief River Falls.

Blawats are members of St. Bernard's Catholic Church. Stacy is a stay-at-home mother serving the role as a homemaker. Bernard works maintaining their farmland of which some is in CRP and some is leased.

"The power plant tour I participated in last summer revealed the complex process involved in the generation and distribution of the electricity we take for granted each day," stated Blawat. "It also informed me of the extreme environmental and governmental regulations affecting the cost of electric power."

"I appreciate and look forward to the opportunity of representing the energy consumers of District 2," said Blawat.

## \$418,000 capital credit payment given in March

The Red Lake Electric Cooperative Board of Directors has approved the payment of capital credits totaling over \$418,000. This payment continues a strong tradition of equity revolvment at Red Lake Electric.

The balance of capital credits assigned to members in 1993 will be paid out, as well as 62 percent of the capital credits assigned in 1994. Active members, if they received service in those years, will see a credit adjustment on their March billing statement. Inactive members (those no longer receiving service from RLEC) will be mailed a check.

The difference between annual revenues and annual expenses (termed a margin) is assigned to members' capital credit accounts each (2126002.03 Jerome Lund) year based on their annual billings for electric service. The Cooperative retains those capital credits for a number of years for financial security and to reduce debt. If the Cooperative's financial health is good, as it is today, some of those capital credits assigned are paid out to members. At RLEC, capital credits are paid out on a "first in, first out" basis. Capital credits are also paid out in the event of the death of a member or their spouse.





## Manager's Comments

by Roger Johanneck



Last month, members of Red Lake Electric Cooperative received the official notice of the Cooperative's annual meeting which was printed in the February issue of the *Volts and Jolts*. This month members will notice that we have included a copy of the Cooperative's 2010 annual report and more information about the business that we'll take care of the day of the Annual meeting. I'd like to add my personal invitation to all members to join us, if you can, at the Cooperative's annual meeting on Wednesday March 30th in Thief River Falls.

This year's meeting will be the sixth year in a row we have held your Cooperative's annual meeting at the (4428004.10 Harold Myers) Ralph Engelstad Arena in Thief River Falls. It is a beautiful facility to hold a meeting and the Imperial

meeting room is easily accessible to all. The main entrance located on the east side of the arena has a ramp from the south parking lot to accommodate those who prefer not to use the steps to the main entrance. Once inside, there is an elevator one can use to get to the lower level where the meeting is held in the Imperial room.

New this year to our annual meeting program is recently hired Minnkota general manager Robert "Mac" McLennan. Mac will bring us up to date on issues facing our power supplier, Minnkota Power Cooperative and talk about what is driving up the cost to generate and deliver energy to Red Lake Electric Cooperative and the member systems.

I encourage you to look over the annual report booklet included in this month's *Volts and Jolts*. In

addition to facts and figures that give you a financial picture of your Cooperative, the report hi-lights issues that are impacting the way we do business. The report also covers some of the work activities that took place in 2010.

Equally important to the business that we are required to take care of at our annual meeting, I think, is the chance for members to visit with the employees that are working for them and the directors that are representing them at the Cooperative.

In addition to trading stories with our neighbors, we'll elect four directors, hear about what is happening at your Cooperative, share a meal and give away some prizes. I hope you can join us at the Cooperative's annual meeting on March 30th in Thief River Falls.



## Minnkota Minute

by Robert "Mac" McLennan, Minnkota president & CEO

## We need to meet challenges together

As the new president & CEO of Minnkota Power Cooperative, I'd like to take this opportunity to introduce myself to the membership of Red Lake Electric Cooperative.

I'm pleased to be a part of the Minnkota Joint System and I look forward to working with your electric cooperative and its board of directors to keep Minnkota a viable asset to you, the member-owner. As many of you know, Minnkota generates and transmits the energy needed by homes, farms and businesses in your service area and throughout eastern North Dakota and northwestern Minnesota.

Before joining Minnkota in January, I worked at Tri-State Generation & Transmission Association, a generation and transmission cooperative, based near Denver, Colo., as the senior vice president of external affairs & member relations. In that position I focused on member relations, corporate planning, environmental compliance and development of business strategies. I've also worked for the National Rural Electric Cooperative Association (NRECA) as direc-

tor of environmental affairs, where I helped develop nationwide environmental strategies for cooperatives.

Though Tri-State is a much larger cooperative than Minnkota, it is facing many of the same challenges. The cost associated with producing safe and reliable energy has increased dramatically. As a result, Minnkota's wholesale power bill to your cooperative will be higher than originally anticipated in 2011. Minnkota finds itself in the unfortunate position that the economy, new environmental and regulatory requirements and difficult wholesale power market conditions have taken a toll on its balance sheet and operating statements over the last several years.

Minnkota's expenses for 2011 total nearly \$333 million, an increase of about \$97 million from 2009. The average wholesale rate will rise to 6.4 cents per kilowatt-hour (kWh), compared to 4.5 cents per kWh in 2009.

Considering more than 75 percent of your electric bill is made up of wholesale power costs, I would like to take the opportunity to

explain some of the reasons that Minnkota's rates are increasing.

Minnkota is in the process of adding emission control equipment on both generating units at the Milton R. Young Station, located near Center, N.D. More than \$425 million has been invested in the major upgrades to meet new federal emission control standards. Equipment will be installed to remove 95 percent of sulfur dioxide emissions and reduce 60 percent of nitrogen oxides emissions.

This investment also includes support systems and electrical infrastructure to operate the emission controls and meet new safety and reliability standards. These upgrades are necessary to secure the Young Station as a long-term power source.

To deliver much of this energy from the Young Station, Minnkota will construct a new 345-kV transmission line. The 250-mile, \$300 million line will provide capacity to transport baseload generation to Minnkota's service area, as well as help the overall northern Red River Valley with voltage support.

In addition to increased expenses to run its own facilities, significant pressures have been applied to Minnkota's costs as a result of low power market conditions. Minnkota currently has surplus energy in its system due to decreased energy sales and long-term contracts it has in place with other utilities and wind energy developers. With a depressed economy, the demand for excess electricity from the market has (6121003.01 Woodrow Eskeli) dropped significantly. Now, instead of selling electricity in the market for financial gain, Minnkota has been selling most of its excess electricity at a loss. We believe this situation will improve over time with added growth in Minnkota's system and the overall recovery of the economy.

However, the next few years will continue to be a challenge. Minnkota has taken action to reduce costs and continues to look for opportunities in its operations to improve the way services are delivered. I believe that the challenges we face are going to be manageable, but not without significant work. We will need to work together with your cooperative to develop a long-term plan to manage all of these issues and assets in a way that will preserve safe, reliable and affordable electricity for generations to come.



## Member Service Department

by Kevin Reich

## Heating with a geothermal heat pump

As electric rates have increased, some members have questioned: Is it still economical to heat my home with a geothermal heat pump on the general service (regular) rate?

As of March 11, the general service run-off rate, any kilowatt hour (kWh) usage over 500 kWh per month, is 9.1¢ for the January through March billings and 8.4¢ for the April through December billings. For the purpose of using whole numbers, I am going to use 9¢ a kWh average, which is higher than actual for most accounts.

A geothermal heat pump with a COP (Coefficient of Performance) of 3 for heating means the heat pump operates at 300% efficiency. The COP is determined by the ratio of heat output to the amount of energy input. Remember heat pumps do not produce heat, they transfer heat. A heat pump with a COP of 3 delivers three units of heat for every one unit of energy input. No other heating source, regardless of fuel supply, operates as efficiently as a heat pump. The closest is resistance electric heat at 100% efficiency. When heating with (6631001.10 Orlie Solle) a heat pump, for every kWh used at 9¢ the heat pump is delivering 27¢ worth of heat. For resistance electric heat at 100% efficiency, the

price per kWh would have to be 3¢ to provide the same heating value.

To provide the same heating value from a propane furnace operating at 95% efficiency, the price per gallon of propane would have to be 76¢. This points out that heating with a geothermal heat pump on general service rates is still very economical.

Even with the economics, some members are choosing to put their geothermal heating system on control as part of an off-peak heating setup. This requires having an automatic backup heat source such as a propane furnace. Some members have elected to install propane fur-

naces at the same time as the geothermal system mainly for the security of having two heat sources.

Operating a geothermal heat pump on a reduced off-peak rate even makes it more economical. The additional savings would be off-set some by the propane that would be used during the control hours.

The down-side to a geothermal heat pump is the high cost for installation. But there is no heating option more efficient than a heat pump whether it is a geothermal system or an air source heat pump.

## Mission Statement

It is the mission of Red Lake Electric Cooperative to enhance the quality of life for people of our service area by consistently providing quality electric service and other valued services while holding our employees, our community and our environment in high regard.



Red Lake Electric Cooperative, Inc.

One of the Minnkota Power Systems



## Red Lake Electric Cooperative, Inc.

One of the Minnkota Power Systems

## Things you should know about your electric service

### BILLINGS AND COLLECTION

You will receive your energy bill on or near the 20th of each month.

You may pay your bill in person at RLEC during office hours, use the 24-hour drive-up drop box located next to the RLEC office, by Auto Pay, or by mail. Payment must be in the office, drop box, Auto Pay, or in the mail, as evidenced by the postmark, by the 5th day of the following month to avoid a late payment charge. A 1 1/2% monthly late payment charge will be computed on delinquent energy bills, the minimum late payment charge will be \$1.00.

If your payment is not received by the 15th of the month, a final notice of disconnection statement will be included on your following bill. The final notice statement will notify you when your electric service will be disconnected if the delinquent amount remains unpaid. If an employee is sent to disconnect your electric service, a \$50 collection fee will be charged to your account, even if you pay the collector.

To have a disconnected service reconnected, all amounts owing, a \$50 reconnection fee, and a security deposit must be paid. If the service must be reconnected after normal working hours, a \$100 reconnection fee must be paid.

### BAD CHECKS

A \$15 charge will be levied each time a check is returned because of nonsufficient funds, account being closed or payment stopped.

### OUTAGES

In case your electricity goes out, please do the following:

1. Check your fuses or breakers at the yard pole or meter pedestal.
2. Call your neighbor to see if they are out of electricity also.
3. Call the RLEC office (218-253-2168 or 1-800-245-6068) during working hours or 218-253-2200 after hours. We will accept collect calls for outages only.

### METER TESTS

RLEC has a schedule in place to have its meters periodically tested for accuracy. Results from these tests show that meters generally slow down with age; however, if you think that your meter is recording too much usage, RLEC will test it for accuracy. You must pay a test fee in advance of the test. If the meter test shows that the meter was inaccurate, the test fee will be refunded to you.

### STOPPED METERS

If you find your meter has stopped and you are using electricity, please contact the office immediately so we can replace it. Average consumption will be billed to the member for the time the meter was stopped so there is no advantage in not reporting a stopped meter.

### METER READINGS

An automated meter reading system is utilized to obtain monthly meter readings. Although the system is normally reliable, there is always a chance that the correct reading has not been transmitted to the office for billing. Customers should periodically read their meter and compare it to the reading on the billing statement. If the actual reading is not close to the billing statement reading, please call the office.

### GENERAL SERVICE RATES

Facilities charge variable \$24 to \$31 month  
First 500 KWH . . . . .9.6¢ Kwh  
Over 500 KWH (April-Dec.) . . . . .8.4¢ Kwh  
Over 500 KWH (Jan.-Mar.) . . . . .9.1¢ Kwh  
Multiphase users add \$20/month cost of service charge.

Standby, \$12/month (meter disconnected but the power line retained; standby is not available on services larger than 15 KVA transformer capacity).

Security light, \$7/month, high pressure sodium, \$8/month, mercury vapor; water heater flat credit, \$7/month (on January-April billing); off-peak equipment charge, \$5/month per heat meter; off-peak electric heat rate, 4.7¢/kWh long-term control, 7¢/kWh short-term control.

## Red Lake Electric Cooperative, Inc. Operating Report MONTHLY COMPARISON

	JANUARY 2010	JANUARY 2011
Total Revenue . . . . .	\$ 1,353,948	\$ 1,385,159
Total Margins . . . . .	\$ 286,771	\$ 223,802
Cost of Power . . . . .	\$ 813,017	\$ 896,856
KWH's Purchased . . . . .	17,674,876	18,013,126
Capital Credits Paid to Estates . . .	\$ 8,829	\$ 5,342

### YEAR TO DATE COMPARISON

	JANUARY 2010	JANUARY 2011
Total Revenue . . . . .	\$ 1,156,771	\$ 1,385,159
Total Margins . . . . .	\$ 222,521	\$ 223,802
Cost of Power . . . . .	\$ 675,357	\$ 896,856
KWH's Purchased . . . . .	19,432,384	18,013,126
New Service Connections . . . . .	0	1
Customers Served . . . . .	5,162	5,193
Capital Credits Paid to Estates . . .	\$ 5,939	\$ 5,342
Miles of Line		
Overhead . . . . .	2,319	2,324
Underground . . . . .	235	239

## RED LAKE ELECTRIC COOPERATIVE, Inc. VOLTS & JOLTS (USPS 663-400)

Published monthly by the Red Lake Electric Cooperative, Inc., 412 International Drive SW, Red Lake Falls, Minnesota 56750-0430, in the interest of its members and others. Periodical Postage Paid at the U. S. Post Office in Red Lake Falls, Minnesota 56750. POSTMASTER, SEND ADDRESS CHANGES to Volts & Jolts, c/o Red Lake Electric Cooperative, Inc., P. O. Box 430, Red Lake Falls, Minnesota 56750-0430. E-mail: redlake@minnkota.com

### OFFICERS AND DIRECTORS

PRESIDENT . . . . . Kelly Lundeen  
VICE PRESIDENT . . . . . Bonnie Christians  
SECRETARY-TREASURER . . . . . Mark Hanson  
DIRECTORS . . . . . Robert Olson, Robert Finstad,  
Steven Linder, Colette Kujava,  
Randy Versdahl, Peter Mosbeck

Subscription Rate . . . . . \$2.50 per year

## NOTICE

Hidden within the text of the articles of this issue of the Volts & Jolts are the names and account numbers of five RLEC members. They will appear within the articles in parenthesis as such (9999999.99 Roger P. Member). If you find your name and account number, clip it out and send it with your next payment. You will be credited with \$5 on your electric bill.

## WE PROUDLY PRESENT TO YOU

## The Red Lake Electric Cooperative Customer Service Guarantee

It's short and simple! Red Lake Electric Cooperative employees will meet or exceed your expectations of friendly, courteous service and will meet any commitments they make to you. If your expectations of the service provided by our employees is not met, please contact me at the Red Lake Electric Cooperative office, 253-2168. You will receive \$5.00 for your inconvenience and our promise to serve you better in the future. Our employees' commitment to quality customer service makes this guarantee possible.



Red Lake Electric Cooperative, Inc.

One of the Minnkota Power Systems

ROGER JOHANNECK  
General Manager





# Recipe corner

## Saucy Chicken and Asparagus

- 1-1/2 pounds fresh asparagus spears, halved
- 4 boneless skinless chicken breast halves
- 2 tbsp cooking oil
- 1/2 tsp salt
- 1/4 tsp pepper
- 1 can (10-3/4 ounces) condensed cream of chicken soup, undiluted
- 1/2 cup mayonnaise
- 1 tsp lemon juice
- 1/2 tsp curry powder
- 1 cup (4 ounces) shredded cheddar cheese

If desired, partially cook asparagus; drain. Place the asparagus in a greased 9-in. square baking dish. In a skillet over medium heat, brown the chicken in oil on both sides. Season with salt and pepper. Arrange chicken over asparagus. In a bowl, mix soup, mayonnaise, lemon juice and curry powder; pour over chicken. Cover and bake at 375 degrees for 40 minutes or until the chicken is tender and juices run clear. Sprinkle with cheese. Let stand 5 minutes before serving. Yield: 4 servings.

## Rhubarb/Strawberry Pie

- 3 cups sliced fresh rhubarb
- 3 cups sliced fresh strawberries
- 1/2 - 3/4 cups sugar
- 1-1/2 tbsp instant tapioca
- 1/3 cup fresh orange juice
- 1-1/2 tbsp orange marmalade, optional
- 1/4 tsp grated orange peel
- Pastry for double-crust pie (9 inches)

In a large bowl, combine the first seven ingredients; let stand for 15 minutes to soften tapioca. Place bottom pastry in a deep-dish 9-in. pie plate. Add filling. Top with a lattice crust. Bake at 375 degrees; bake 30 minutes more until filling is bubbly and Rhubarb is tender. Yield: 6-8 servings.

# Seal manufactured home air leaks to slash electric bills

If energy bills for your manufactured home seem too high, the likely culprits are air leaks. Here are some tips from that can help you stop leaks from your home—and your wallet.

Older manufactured homes, especially those built before 1994, may be plagued by leaking ducts and inadequate insulation. Leaky ductwork can reduce the efficiency of your heating and cooling system by as much as 20 percent. A good time to check for leaks is on a windy day, when you'll be able to find drafty spots.

Experts recommend going after big leaks first. That means plugging all holes around chimneys, vents, water pipes, and heating system ductwork. Seal any duct leaks with mastic. Avoid the use of duct tape, which can dry out and disintegrate when used. Adding insulation to floor, walls, and ceiling cavities can improve energy efficiency, but may be a job for a professional contractor.

Once you've sealed major leaks, look for smaller ones—around windows, doors, electrical outlets, and light switches. Seal gaps around windows and doors, using caulk on non-moving parts. And replace any worn weather stripping.

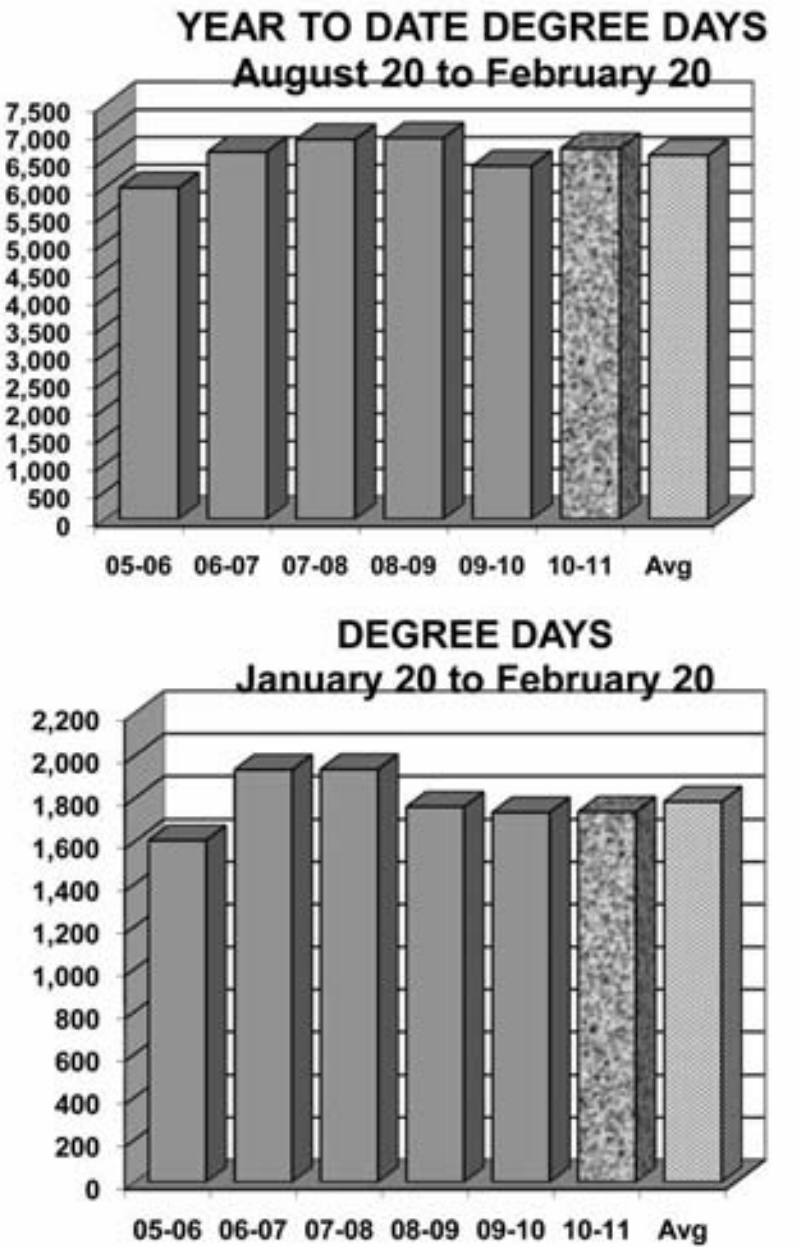
Caulk or expanding spray foam are perfect in spots where plumbing, wiring, vents and ducting penetrate through walls. Installing foam outlet gaskets behind electrical outlets and light switches—especially on outside walls—can save energy, too.

For safety's sake, make sure that all combustion appliances, such as furnaces, stoves, and water heaters, are properly vented.

For other tips on how to save energy—and money—visit [www.energysavers.gov](http://www.energysavers.gov) OR Touchstone Energy® Cooperatives energy-saving website, [www.TogetherWeSave.com](http://www.TogetherWeSave.com), or call the efficiency experts at Red Lake Electric Cooperative.

# DEGREE DAYS

To determine degree days, you must calculate the daily mean temperature for the time period you are measuring. Degree day computation is based on the assumption that a building does not require any heat if the outside temperature averages 65 degrees during a 24-hour period. To obtain a degree day figure, the high temperature and the low temperature for the day are added and the total divided by two. That figure is then subtracted from 65. For example, if the high temperature was 30 degrees and the low temperature 10 degrees, the figure would be 30+10=40; 40/2=20; 65-20=45. This would be a 45-degree day. The higher the degree day figure, the more heat required to warm your home.



## Buttermilk Fried Chicken with Gravy

- 1 broiler-fryer chicken (2-1/2 to 3 pounds), cut up
- 1 cup buttermilk
- 1 cup all-purpose flour 1-1/2 teaspoons salt
- 1/2 tsp pepper
- Cooking oil for frying

**Gravy:**  
3 tbsp all-purpose flour  
1 cup milk  
1-1/2 to 2 cups water  
Salt and pepper to taste

Place chicken in a large flat dish. Pour buttermilk over; cover and refrigerate for 1 hour. Combine flour, salt and pepper in a double-strength paper bag. Drain chicken pieces; toss, one at a time, in flour mixture. Shake off excess; place on waxed paper for 15 minutes to dry. Heat 1/8 to 1/4 in. of oil in a large skillet; fry chicken until browned on all sides. Cover and simmer, turning occasionally, for 40-45 minutes, or until juices run clear and chicken is tender. Uncover and cook 5 minutes longer. Remove chicken and keep warm. Drain all but 1/4 cup drippings in skillet; stir in flour until bubbly. Add milk and 1-1/2 cups water; cook and stir until thickened and bubbly. Cook 1 minute more. Add remaining water if needed. Season with salt and pepper. Serve with chicken. Yield: 4-6 servings.

## Baked Spaghetti

- 1 cup chopped onion
- 1 cup chopped green pepper
- 1 tbsp butter or margarine
- 1 can (28 ounces) tomatoes with liquid, cut up
- 1 can (4 ounces) mushroom stems and pieces, drained
- 1 can (2-1/4 ounces) sliced ripe olives, drained
- 2 tsp dried oregano
- 1 pound ground beef, browned and drained, optional
- 12 ounces spaghetti, cooked and drained
- 2 cups (8 ounces) shredded cheddar cheese
- 1 can (10-3/4 ounces) condensed cream of mushroom soup, undiluted
- 1/4 cup water
- 1/4 cup grated Parmesan cheese

In a large skillet, saute onion and green pepper in butter until tender. Add tomatoes, mushrooms, olives and oregano. Add ground beef if desired. Simmer, uncovered, for 10 minutes. Place half of the spaghetti in a greased 13-in. x 9-in. x 2-in. baking dish. Top with half of the vegetable mixture. Sprinkle with 1 cup of cheddar cheese. Repeat layers. Mix the soup and water until smooth; pour over casserole. Sprinkle with Parmesan cheese. Bake, uncovered, at 350 degrees for 30-35 minutes or until heated through. Yield: 12 servings.

# From the Mail Bag

### Dear RLEC:

Thank you for the fillet knife and power cord that we won at the Dist. 2 information meeting. Thank you again.

Sylvia Dale Cole  
Middle River

### Dear RLEC:

The NCTC Foundation Thief River Falls Spring Scholarship Ceremony was held on Monday, February 28, 2011 at the NCTC Theatre where 132 scholarships were awarded for just under \$67,000.

The scholarship recipients were very appreciative of the honor of being selected for the Red Lake Electric Co-op, Inc Scholarships and for the financial assistance that your scholarships provide. Their thank you notes are enclosed.

We know that scholarships can and do make a difference in the lives of our students. Together we are building a solid foundation that will benefit our college, our community and our students for years to come.

Thank you from the NCTC Foundation Scholarship Committee.

Dustin Buse  
Director of Annual Giving & Alumni Affairs

### Dear RLEC:

Thank you for your generous investment in my education. It is an honor to receive assistance from your esteemed electric company and I sincerely hope that future Northland College students will be able to benefit from your kindness.

Your funds will help support my aviation career now and in the future. And I will promise to you and the community to repay your contributions with hard work, dedication, and perseverance to do my best not only in my career but in my community as well.

Houston Kiekeide  
Student Senate President  
Northland Community & Technical College  
Thief River Falls Campus

### Dear RLEC:

I was both surprised and honored to receive your generous five hundred dollars (\$500.00) Red Lake Electric Co-op scholarship from your Cooperative. I am aware of some of the things you do for our community, particularly in support of education.

I am a Junior Student at the Northland Community and Technical College pursuing an associate degree in the career field of Aviation Maintenance Technician program. Upon graduation, I plan to enroll at the University of North Dakota for a four year Bachelor's Degree in aviation management.

Currently, I am diligently looking for a part-time job to support my family while I am in school. I have become an advocate for educational re-engagement and academic success within my community by becoming a volunteering member of the Civil Air Patrol branch of The United States Air Force Auxiliary. I am not only dedicated to my own success, but also to the success and visions of other young people like me who have faced insurmountable odds.

As anyone attending college knows, the cost of fees, books and materials, and living expenses are daunting. The Red Lake Electric Co-op scholarship I received through the Scholarship Committee of Northland Community and Technical College Foundation is essential in helping me achieve my goals.

Thank you again for your generosity.

James A. Kudée  
Northland Community & Technical College

### Dear RLEC:

I would like to extend my sincere thanks to you for the scholarship. I promise the money will be well spent. I will be using the money to purchase more tools which I will use in my profession and help pay back my student loans used for tuition. I cannot thank you enough for giving me the funds to further my education.

Matthew Lembke  
Northland Community & Technical College

# Informational Web Sites

The following is a list of Web sites that can provide information and education in reference to electrical safety and energy conservation. These Web sites are listed as links on Red Lake Electric Cooperative's Web site at [www.redlakeelectric.com](http://www.redlakeelectric.com).

- Electrical Safety Foundation International: [www.esfi.org](http://www.esfi.org)
- Alliance to Save Energy: [www.ase.org](http://www.ase.org)
- US Environmental Protection Agency: [www.epa.gov/greenhomes](http://www.epa.gov/greenhomes)
- Energy Star: [www.energystar.gov](http://www.energystar.gov)
- Minnesota Safety Council: [www.minnesotasafetycouncil.org](http://www.minnesotasafetycouncil.org)
- Safe Electricity: [www.safeelectricity.org](http://www.safeelectricity.org)
- Lighting Controls Association: [www.aboutlightingcontrols.org](http://www.aboutlightingcontrols.org)
- US Consumer Product Safety Commission: [www.cpsc.gov](http://www.cpsc.gov)

## Spice Cake

- 2 cups sugar
- 1 cup butter or margarine, softened
- 4 eggs, beaten
- 3 cups all-purpose flour
- 1 teaspoon baking powder
- 1 teaspoon baking soda
- 1 teaspoon ground cinnamon
- 1 teaspoon ground cloves
- 1 teaspoon ground nutmeg
- 1 cup buttermilk

### Butter Cream Frosting:

- 1/2 cup shortening
- 1/2 cup butter or margarine, softened
- 1 teaspoon vanilla extract
- 4 cups confectioners' sugar
- 3 tablespoons milk

In a mixing bowl, cream sugar and butter. Add eggs; beat well. Combine dry ingredients; add to creamed mixture alternately with buttermilk. Mix well. Pour into a greased and floured 13-in. x 9-in. x 2-in. baking pan. Bake at 350 degrees for 35-40 minutes or until the cake tests done. Cool. For frosting, cream shortening and butter in a mixing bowl. Add vanilla. Gradually beat in sugar. Add milk; beat until light and fluffy. Frost cake. Yield: 12-16 servings.

## Fluffy Fruit Salad

- 2 cans (20 ounces each) crushed pineapple
- 2/3 cup sugar
- 2 tablespoons all-purpose flour
- 2 eggs, lightly beaten
- 1/4 cup orange juice
- 3 tablespoons lemon juice
- 1 tablespoon vegetable oil
- 2 cans (17 ounces each) fruit cocktail, drained
- 2 cans (11 ounces each) mandarin oranges, drained
- 2 bananas, sliced
- 1 cup heavy cream, whipped

Drain pineapple, reserving 1 cup juice in a small saucepan. Set pineapple aside. To saucepan, add sugar, flour, eggs, orange juice, lemon juice and oil. Bring to a boil, stirring constantly. Boil for 1 minute; remove from the heat and let cool. In a salad bowl, combine the pineapple, fruit cocktail, oranges and bananas. Fold in whipped cream and cooled sauce. Chill for several hours. Yield: 12-16 servings.

**IF YOU'RE THINKING OF AN AUCTION . . .**  
**THINK McMULLEN Auctioneers**  
Celebrating 25 years in the Auction Business

Two generations of auctioneers  
Competitive rates  
Auctions conducted on-site or under shelter  
Site preparation available  
Portable steam cleaning unit  
Full set-up service available  
Full detail & cleanup division  
Pick up & delivery service available  
Trailers available  
Bathrooms provided  
Online auctions available  
Live on-line auction bidding  
We're full-time in Sales, Marketing & Auction Business

**Book Now for Best Dates!**  
Sat, April 30 ~ 11 a.m. ~ Am Farm and Livestock Equipment Auction, Gonvick ~ Larry Senger, Owner  
Sat, May 7 ~ 11 a.m. ~ Farm and Shop Equipment Auction, Erskine, MN ~ Duane Kolden Estate  
Sat, May 14 ~ 10 a.m. ~ Farm Equipment, Recreational, Lawn and Garden Consignment Auction

**Thief River Falls**  
**McMULLEN Auctioneers**  
218-681-3960  
[www.mcmullensales.com](http://www.mcmullensales.com)

Joe McMullen (218) 688-5769 Lic. #63-1  
Scott McMullen (218) 688-5124 Lic. #57-34  
Jen McMullen (218) 688-4009 Lic. #57-33

**HELP! HELP! HELP!**  
"My basement is wet! Who do I call?"

**RADNIECKI'S**  
Classic Cleaner

☒ Carpets ☒ Pet Stains  
☒ Upholstery ☒ Odor Control  
☒ Ceilings & Walls ☒ Air Duct Cleaning  
☒ Emergency Water & Smoke Damage

**Greg**  
**call: (218) 681-7679**

**And for all your cleaning needs call 218-681-7679**

**"I WANNA RIDE"**

ON ALL BIG RED® MODELS  
**3.99%**  
FIXED APR  
FOR 60 MONTHS ON APPROVED CREDIT\*  
**\$500**  
BONUS BUCKS  
ON SELECT MODELS\*\*

**www.rvsports.com**

**RV Sports, Inc.**  
Hwy. 1 & 59 W. • Thief River Falls  
FAX: (218) 681-8420 • 1-800-826-5403  
**OFFER ENDS MARCH 31ST**

**honda.com** MULTI-PURPOSE UTILITY VEHICLES CAN BE HAZARDOUS TO OPERATE. FOR YOUR SAFETY, BE RESPONSIBLE. ALWAYS WEAR A HELMET, EYE PROTECTION AND APPROPRIATE CLOTHING. ALWAYS WEAR YOUR SEAT BELT AND KEEP THE SIDE NETS AND DOORS CLOSED. AVOID EXCESSIVE SPEEDS. AND BE CAREFUL ON DIFFICULT TERRAIN. ALL MUV DRIVERS SHOULD WATCH THE SAFETY VIDEO. MULTI-PURPOSE UTILITY VEHICLES: A GUIDE TO SAFE OPERATION. READ THE OWNER'S MANUAL BEFORE OPERATING THE VEHICLE. NEVER DRIVE UNDER THE INFLUENCE OF DRUGS OR ALCOHOL. ON PUBLIC ROADS, OR WITH MORE THAN ONE PASSENGER, BIG RED IS ONLY FOR DRIVERS 16 YEARS AND OLDER. DRIVER AND PASSENGER MUST BE TALL ENOUGH FOR SEAT BELT TO FIT PROPERLY AND TO BRACE THEMSELVES WITH BOTH FEET FIRMLY ON THE FLOOR. PASSENGER MUST BE ABLE TO GRASP THE HAND HOLD WITH THE SEAT BELT ON AND BOTH FEET ON THE FLOOR. RESPECT THE ENVIRONMENT WHEN DRIVING. \*3.99% Fixed APR financing available for customers who qualify for super preferred credit tier for up to 60 months through Honda Financial Services. Payment example: 60 monthly payments of \$18.41 for each \$1,000 financed. Finance offer good on new and unregistered MUV700 models. Not all buyers may qualify. Higher rates apply for buyers with lower credit ratings. \*\*\$500 Bonus Bucks valid on 2010 MUV700 models. Bonus Bucks redeemable only for purchase at dealer on purchase date. No cash value. Non-transferable. Redemption value is not to exceed \$500. Offers end 3/31/11. Check with participating Honda Dealers for complete details. Big Red® is a trademark of Honda Motor Co., Ltd. ©2011 American Honda Motor Co., Inc. (02/11) 11-1012



### Farmers Union Oil Company

Thief River Falls 218-681-3512



- Fertilizer
- Petroleum products
- Town and country deliveries
- Tires, batteries, accessories
- Farm supplies

### WILCOX PLUMBING AND HEATING, Inc.

RED LAKE FALLS

*Plumbing/Heating/Air conditioning*

BILL H. MOSER, Master Plumber  
License No. 1770PM  
BILL J. MOSER, Master Plumber  
License No. 6039PM  
Refrigerant Certified No. CFR089400285



- In-floor heating
- Oil furnaces
- Pressure systems
- Gas furnaces
- Electric heat pumps

FREE ESTIMATES  
COMPLETE SALES AND SERVICE

**218-253-4347**



### The Head-Quarters

Hair and Tanning Salon

## HAIRSTYLING FOR MEN AND WOMEN

PARK PLACE MALL  
RED LAKE FALLS, MINNESOTA

**218 253-4223**

### Security STATE BANK



- Operating loans
- Vehicle loans
- Farm real estate loans
- Consumer loans

"We appreciate your business."

**218-796-5157**  
**Fax 218-796-5158**  
tim.hagl@ssboklee.com





"THE FARMERS' HELPING HAND"

## Dave Miller Agency

DAVE MILLER, AGENT  
RURAL ROUTE 1  
VIKING, MINNESOTA 56760



- All-Risk Crop Insurance
- Crop/Hail Coverage

**218-523-5861**

# VOLTS AND JOLTS FEATURE OF THE MONTH

## K9 behavioralist trains by understanding the animal

Nestled among the trees of the wooded farmstead of the Jenson family is DJ's K9 Country Kennel near Goodridge. Danette Jensen is the owner and operator of the rural enterprise she established with the help of her husband in 2004.

Jensen had operated other such business prior to establishing this location but none were on the current scale. The site boasts large fenced in areas for training, exercise and for when nature calls. Inside is a kennel area with wash facility and a front area for picking up and dropping off of animals by her many customers. At times she has managed as many as 22 dogs which she feeds, waters and exercises until the owners return. She devotes a full-time effort to the well being of the animals left in her care.

She is certified as a dog trainer through a special course she took at a university in Ohio. The intense study was actually a fully accredited course that was concentrated into an intense six week program. Although this program granted her a certificate as a dog trainer, Jensen considers herself a dog behavioralist. The differences between simply training a dog and adjusting behavior are vast in the eyes of Jensen. Instead of rewarding a dog with treats when the desired action is observed, Jensen watches the animal and observes its behavior and responses to what is going on around it. She then teaches commands or provides input that adjusts the imprint in the mind of the dog so the desired traits come out and the undesirable traits are "erased" or adjusted.

A dog absorbs 90% of the information it uses throughout its life in the first few months of life. This information is arranged

in their minds and becomes imprinted. It is this imprint that has to be permanently adjusted in order to have a safe and productive animal for work or to be a good member of the happy family unit.

The result is a dog that is trained to respond to its owner because it feels compelled and not because it expects a treat.

This is the method she uses to train dogs for people with special needs or for highly trained dogs that will be effective in search and rescue situations or for use as tracking dogs.

She believes that the word "dog" is "God" spelled backwards for a reason. There is a reflection of creator in the amaz-

ing wonder that is a dog. Dogs can sense our moods, our health, stress levels, and sense of safety. Some say they can see and feel the human ora and can respond to what they see.

Over the past three years, Danette has developed a following through her weekly

radio program. She fields questions from callers and provides tips for dog care and behavior modifiers to help those with "problem" dogs. She can be heard at 11:45 a.m. each Thursday on 1230 AM radio out of Thief River Falls



Jensen visits with the dogs in her care routinely and provides opportunity for exercise and other needs that arise as well as friendly play and scratching.



The kennels were specially constructed to Jensen's specifications developed over years of working with dogs. They are meticulously maintained and kept sanitary.



A view of the exterior of the K9 Country kennel operated by Danette Jensen. The facility has many fenced in areas that keep the animals safe and focus during the many activities available to them.



K9 Country Kennels near Goodridge maintains the down-home country atmosphere while providing top notch K9 care behind the welcoming facade.

### Bray-Gentilly Mutual Insurance Co.

Locally Owned and Operated  
Serving Policyholders Since 1900

**218-683-3200**

2017 Hwy. 59 SE • P.O. Box 592  
Thief River Falls, MN 56701

*INSURANCE FOR FARMS, HOMES AND PERSONAL PROPERTY*

TELEPHONE US FOR AN AGENT NEAR YOU!

### Hanson Oil & Fuel, Inc.



**Mobil**

UP TO 5,000 MILES BEFORE OIL CHANGE

- Quality products, prompt service
- Biodiesel
- Diesel fuel
- Heating oils
- Aviation gas
- Unleaded gas
- Jet-A

**FARMER-GROWN BIODIESEL**

Give Andy a call at  
**218-253-2787 or 218-281-4102**  
RED LAKE FALLS

### Kilen's Custom Cleaners

- Commercial
- Residential
- Custodial



Specializing in  
**Water, Fire & Soot Restoration**

**Jordan Kilen - Owner**  
**(218) 686-2591**  
**www.kilencustom.com**

Free Estimates

*"Achieving excellence one customer at a time"*

### Want to cut your heating cost by up to 50%?

Buy a YORK Affinity heat pump today!



**GROVE MECHANICAL, INC.**

Your hometown heating & air conditioning team!  
Serving Crookston and the surrounding communities for 30 years.  
**(218) 281-3863**

OFFICE PHONE  
**253-2168**

OUTAGE PHONE  
**253-2200**

**1-800-245-6068**



**Red Lake Electric Cooperative, Inc.**

*One of the Minnkota Power Systems*





Red Lake Electric line workers are installing a push brace on an angle pole along county road 30. Once the road work is done an anchor and guy wire will be installed and the push brace will be removed.

# Line rebuilt north of Newfolden

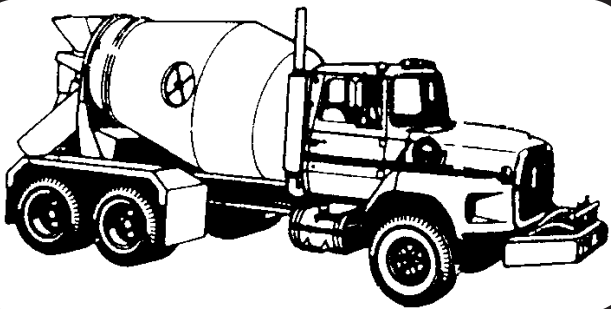
Marshall County will be rebuilding county road 30 which is north of Newfolden. Red Lake Electric Cooperative had three miles of single phase overhead line that had to be rebuilt to accommodate the road work. This work is nearly complete. There will be additional clean-up work once the road work is done.



A Red Lake Electric line construction crew string wire for the line rebuild. The size of the new wire is 1/0 and the old wire was #4.

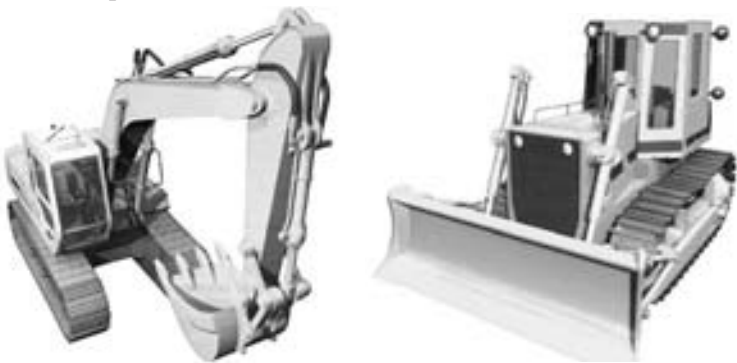


Casey Thronson uses an extendo stick to remove the hot tap for a service on an existing pole. The service tap will be moved to the new pole in the background.



## DAVIDSON READY MIX & CONSTRUCTION

- Concrete
- Concrete Blocks
- Rebar
- Rock
- Gravel
- Backhoe and Dozer Service
- Septic Tanks



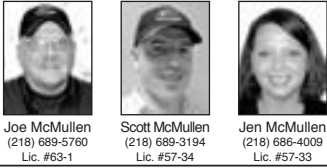
**CALL (218) 449-4865  
or (218) 681-7033**  
1325 Greenwood St. W  
Thief River Falls  
[www.davidsonconstruction.com](http://www.davidsonconstruction.com)

### CONSIGNMENT AUCTION Saturday, May 14<sup>th</sup> ~ 10 a.m.

**Consign  
Early for Best  
Advertising**

Consigned  
Equipment and Items  
from Estates, Lenders, Farmers,  
Contractors and Individuals  
For more info or to consign call  
689-5760 or 681-3960

Auction located at **SCHMALZ INDUSTRIES**  
16276 150th St., Thief River Falls



**McMULLEN**  
Auctioneers  
218-681-3960

[www.mcmullensales.com](http://www.mcmullensales.com)

**After-Hours Outage Phone  
218-253-2200**

Specializing in  
**Water, Fire/Soot Restoration**  
**Emergency 24 Hour Service**  
Carpet and Upholstery • Ceilings and Walls  
Strip and Wax • Tile and Grout  
Furnace Duct Cleaning  
Janitorial Services



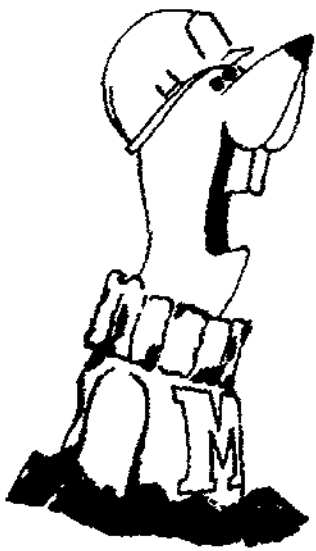
Maid Service • Weekly • Monthly • One Time  
**Kilen's Custom Cleaners**  
"ACHIEVING EXCELLENCE ONE CUSTOMER AT A TIME"  
Thief River Falls • [www.kilenscustom.com](http://www.kilenscustom.com)  
(218) 686-2591

Commercial  
Residential  
Custodial

**LOOK UP  
POWER LINES MAY  
BE OVERHEAD**

## Call Before You Dig

With the arrival of spring, many people have plans for digging and planting projects. To ensure your safety and the safety of others, before digging or planting, call Gopher State One Call, 1-800-252-1166.



Red Lake Electric Cooperative members and area contractors are reminded, if you are planning to dig deeper than one foot, you must call Gopher State One Call – it's the law!

A call to Gopher State will get all utility underground lines and pipes located and marked, free of charge, within 48 hours.

Don't take chances – mistakes cost lives.

CALL

**1-800-252-1166**

BEFORE YOU DIG.



**THE TIRES YOU NEED.  
THE SERVICE YOU EXPECT.  
THE BRAND YOU TRUST.**

Your Certified Firestone Farm Tire Dealer is part of the largest, specially-trained and equipped farm tire service network in the nation. That includes a full tire inventory, service trucks for in-field needs, authorized warranty service and an understanding of your business.

**Firestone tires Kick Dirt. Visit your Certified Firestone Farm Tire Dealer and see for yourself.**

## TRIANGLE TIRE SALES AND AUTO SERVICES

SOUTH MAIN AVENUE  
RED LAKE FALLS, MINNESOTA 56750

**218-253-2817**



**Firestone**  
FARM TIRES  
THE LEADER IN THE FIELD  
[www.firestoneag.com](http://www.firestoneag.com)





Travis Huot works to attach existing service wires to a new line pole that has been installed along Marshall County Road 30.



Troy Schmitz installs vibration dampeners on the new wires that have been strung for the line rebuild. The dampeners help prevent vibration from the wind to help keep the wire from fraying or breaking and to help keep the wire ties tight.

## MINUTES OF THE ANNUAL MEETING OF THE MEMBERS OF THE RED LAKE ELECTRIC COOPERATIVE HELD ON WEDNESDAY, MARCH 31, 2010 AT THE RALPH ENGELSTAD ARENA IN THIEF RIVER FALLS

The 72nd annual meeting of the members of Red Lake Electric Cooperative, Inc. was held on Wednesday, March 31st, 2010 in the Imperial Room of the Ralph Engelstad Arena in Thief River Falls. President Kelly Lundeen called the meeting to order at 10:30 am. Approximately 300 members and guests were in attendance.

Lundeen thanked Vern Rogalla for the pre-meeting musical entertainment he provided. Becca Kruta, a senior at Lincoln High School in Thief River Falls sang the national anthem. Henry Wieland gave an invocation and current and former board members were introduced.

President Lundeen then called the business meeting to order. Secretary Henry Wieland then read the affidavit of mailing and quorum declaration.

Lundeen entertained a motion that the 2009 annual meeting minutes be approved as they were printed in the March "Volts and Jolts." It was duly moved, seconded and carried to do so.

In his president's report, Kelly Lundeen said the past year of 2009 was very good in many respects. RLEC was spared any major storm related outages and that the main cause for service interruptions was due to underground cable failure. Outage time per customer averaged 50 minutes in 2009; second best on record to 2006 and half of what the Cooperative averaged over the past five years. Lundeen reported over \$493,000 was paid out in capital credit retirements, and member equity was a strong 51% of assets. He also thanked the Cooperative's members who participated in the Operation Round Up program.

Roger Johannek, general manager, gave his report and discussed three different topics: Legislation, retail rate outlook and service reliability. Johannek discussed the impact legislation is having on the way that Cooperatives/Electric Utilities operate today. Massive environmental plant upgrades, Renewable Energy, and Conservation Improvement Programs mandates are impacting not only the way Cooperatives do business but in the rates members are paying for their energy. Johannek also touched on the Cooperative's concern for possible climate legislation and encouraged members to contact their federal representatives to let them know what they think.

Johannek also reviewed some of the service interruptions of the past year and explained ways that members have some control over the causes of these interruptions. Johannek said that while the Cooperative has been able to hold and actually reduce its distribution expenses over the past year, increases in wholesale energy costs are simply too much to absorb without increasing RLEC rates; most likely in August of 2010.

Bregier next gave the 2009 Financial Report and said energy sales were at an all-time high; the Cooperative sold 134 million kWh's in 2009. Revenues were \$10.2 million and the cost of wholesale power was \$6.8 million. Bregier said the Cooperatives margin was \$616 thousand; this is the amount that is allocated back to the members as Capital Credits. Bregier reviewed various operating expenses, fixed expenses and items on the balance sheet. She said RLEC fared very well financially in 2009 and was on firm financial ground.

Dave Loer, president and CEO

of Minnkota Power Cooperative, updated members on power supply issues, wind generation, upgrades at the Young generating unit that have been required by the EPA and the \$400 million that has been invested in the power plant to meet these environmental mandates. Loer also spoke about the impact the nation's economy has had on the demand for energy and the cause and effect that low market prices have had on Minnkota Power's surplus energy sales and the revenue Minnkota Power received for these sales. Loer also explained how Minnkota and Minnesota Power had reached an agreement that will transfer Minnesota's remaining share of the Young 2 generation output in exchange for Minnkota's share of the DC transmission line. Minnkota in turn would need to build a new 345 kV transmission line that would wheel the output of the Young power plant to the valley, terminating somewhere near Grand Forks.

President Lundeen asked for a motion to accept the preceding reports and it was duly moved, seconded and carried to do so.

Election of directors then took place. Secretary Wieland verified the nominees elected at the district meetings and said there had been one nomination by petition from District 6, Daniel Schmitz. Voting for the district 6 election took place by mail and at the annual meeting. Results of that election were: Randy Versdahl - 46 votes; Daniel Schmitz - 23 votes. Lundeen then declared the following three people duly elected as directors for three-year terms: District 3, Colette Kujava, District 6, Randy Versdahl; and District 9, Peter Mosbeck.

Lundeen asked for any new business or questions from the audience and there was none. It

was duly moved, seconded and carried to adjourn the business session of the annual meeting.

Safety awards were presented to four RLEC employees in recognition for their safe work records. Employees recognized for surpassing five-year increments of accident free work were: Casey Thronson, lineman and Troy Schmitz lineman, each five years; Dick Gervais, crew foreman, 10 years; and Kevin Reich, member services manager, 35 years.

Appreciation plaques were presented to outgoing directors Hank Wieland who served as director (many as secretary/treasurer) from the Red Lake Falls-Plummer area (district 6) for 28 years and to Joyce Johnson who served as director of district 3 from the Viking area for six years.

Kim Swanson, president of the Red Lake Electric Trust board, presented a \$1,000 grant check to April Ballard of the Early Childhood Family Advocate Program of Thief River Falls. Ballard thanked the members for their participation in the Operation Round Up program and said the grant would be used to help families who have children, birth to age five who are at risk for abuse or neglect.

Johannek then presented a plaque to outgoing RLE Trust President Kim Swanson and thanked her for her six years of serving as a director on the board.

Kevin Reich awarded door prizes and a special attendance prize to long-term member and frequent meeting attendee Dorothy Miller of Goodridge. Lunch was served by Ebenezer Lutheran Church, rural Oklee.

## Mobil Delvac Days are here again!

**Sale runs March 1st - March 31st**

**Receive 50 cents off per gallon of Delvac 1300 15-40 or Mobilfluid 424**

**Stop by our booth Saturday March 26th  
at Ag Day in Red Lake Falls  
- See our fine display of Mobil products -**



**Hanson Oil and Fuel, Inc.**

ANDY MORAN, OWNER

GIVE US A CALL FOR GAS, DIESEL AND OIL DELIVERIES  
Red Lake Falls 218-253-2787 • Crookston 218-281-4102

**Mobil**

## AUTO PAY OFFERED BY RLEC

Red Lake Electric Cooperative is pleased to offer you Auto Pay. Now you can have your monthly energy bill paid automatically from your checking or savings account. You can receive the Auto Pay service by completing the Auto Pay sign-up sheet and returning it to Red Lake Electric Cooperative.

The Auto Pay service is free of charge. Not only is this service free, you will eliminate the expense of writing a check, postage to mail your payment and no more late payment penalties because your bill will be paid on time, every month, for you.

Your payment will be automatically made for you on the 5th of each month. If the 5th falls on a week-

end or holiday, the payment will be made on the next business day. You will continue to receive your monthly energy bill as you have in the past, indicating the amount that will be withdrawn from your bank account. The proof of your payment will appear on your bank statement and your next month's energy bill statement.

**Continue to pay your monthly bill until you are notified on your bill that the Auto Pay has been set up for you.**

If you have any questions about the Auto Pay please call RLEC at 800-245-6068 or 218-253-2168.

## AUTO PAY SIGN-UP SHEET

I authorize Red Lake Electric Cooperative (RLEC) and the bank listed below to initiate variable entries to my checking or savings account. This authorization remains in effect until I notify RLEC in writing to cancel it in such time as to allow RLEC to act on it.

RLEC ELECTRIC ACCOUNT # \_\_\_\_\_

NAME (PRINT) \_\_\_\_\_

ADDRESS \_\_\_\_\_

TELEPHONE # \_\_\_\_\_

NAME OF FINANCIAL INSTITUTION \_\_\_\_\_

CHECKING ACCOUNT # \_\_\_\_\_

SAVINGS ACCOUNT # \_\_\_\_\_

SIGN HERE TO AUTHORIZE \_\_\_\_\_

Please return this authorization form with a blank, voided check to:  
Red Lake Electric Cooperative, P.O. Box 430, Red Lake Falls, MN 56750

## MARCH MADNESS SPRING ATV SALE-A-THON! (Non-Current Specials)

2009



366 4x4 Auto  
(Red or Green)

**\$4,499\***

MSRP  
\$5,649

2009



550 HI 4x4  
Auto EFI  
(Red, Green or Lime)  
**\$5,499\***

MSRP  
\$7,399

**Quantity  
Limited!  
Promotion  
Ends  
March 31st**

**MORE MADNESS**



700 HI 4x4  
Auto EFI  
(Red, Green or Lime)

**\$5,999\***

MSRP  
\$8,449

**Just  
Arrived!**

★ 2011 350 & 425  
4x4 Automatics

★ 2010s on Special Also!

★ Power Steering on  
Select 2010 & 2011 Models

\*All Rebates Applied. Freight & Set-up Included. Extended Warranties Available.



Monday - Friday 9 a.m. - 5:30 p.m. • Saturday 9 a.m. - 1 p.m.

www.rvsports.com

www.rvsports.com

www.rvsports.com



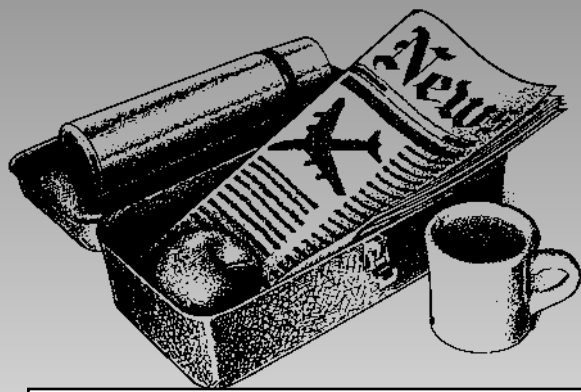
**Red Lake Electric Cooperative, Inc.**

*One of the Minnkota Power Systems*

Phone	218-253-2168
Toll-free	1-800-245-6068
Fax	218-253-2630
After-hour outage	218-253-2200
Office hours	Monday-Friday, 8:00-4:30
E-mail:	redlake@minnkota.com
Web site	www.redlakeelectric.com

P. O. Box 430 • 412 International Drive SW • Red Lake Falls, MN 56750-0430





# Your key to buy, sell or trade anything is the CLASSIFIEDS

**The members are invited to use this FREE WANT AD service.**

If you have anything to trade or sell, just drop a card to Red Lake Electric Cooperative, Box 430, Red Lake Falls, MN 56750.

## Real Estate

**FOR SALE - MOTIVATED SELLER!** - #3550 Spacious 4 Br, 2 bath bi-level home with 3,000 plus sq. ft., great layout! Home nestled amongst wooded setting, great storage with quonset and steel barn. Call today! Call or view our Web site for details. Sollie Realty, Fosston, MN 56542; 218-435-1525; www.sollie.net. Equal housing opportunity.

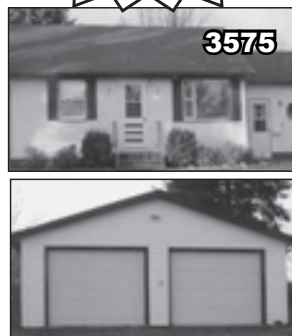
**FOR SALE - NEW LISTING!** Great home on the north side of Red Lake Falls with large lot. Home was new in 2000 has open floor plan with 3 bedrooms and two bath. Everything is on main floor! Has detached two stall garage. For info call Carol with LeBlanc Realty @ 218-945-6281. \$94,500.00.

## House For Sale

**Three 3 Bedroom home** with office and many updates. Shop with wood heat and commercial air compressor. Large cold storage building attached. Lot is 200 plus ft. wide with river view. \$166,000 with a \$5000 siding allowance.

Call for an appointment  
**(218) 253-2940**

## NEW LISTING!



This very well kept 2BR home with many recent updates and is move in ready. Located on corner lot with double detached garage. Call Today!

**SOLLIE REALTY**  
Fosston, MN • 435-1525  
www.sollie.net

www.sollie.com

## House For Sale



602 Falls Ave. SW  
Red Lake Falls

Big Yard • In Town  
4 Bedrooms • 2 Bathrooms  
2-Car Detached Garage  
Central Air

Call 218-637-0081  
after 6 p.m.

## Miscellany

**THE GAZETTE NOW CARRIES**  
- Quarter-fold-size envelopes for computer-generated greeting cards. The Gazette in Red Lake Falls, 253-2594. xf

**COLOR COPIES** - Now available at the Gazette in Red Lake Falls, 253-2594. xf

**PRINTING** - Check with the Gazette for all your printing needs. No job is too big or too small. The Gazette, 253-2594, Red Lake Falls, MN. xf

**PAPERCLIP SALE** - Box of 100 paperclips for 50¢ each or \$3 for a package of 10 boxes. The Gazette in Red Lake Falls, 253-2594.

## For Sale

### WoodMaster Pellet Grills for sale.

The WoodMaster Pellet Grill is an easy way to get authentic, old-fashioned smoky flavor, with auto-lighting, even-heating convenience.

Flavored cooking pellets also available. Many different flavors: apple, cherry, hickory, maple, blended.

For more information:

**WOODMASTER**  
(800)932-3629 or www.woodmaster.com  
600 Polk Ave SW Red Lake Falls, MN 56750



**Midwest Roofing**  
Residential and Commercial

Licensed • Bonded • Insured  
**FREE ESTIMATES**

20061 Center St E  
Thief River Falls, MN 56701

(218) 681-3879  
(218) 686-4475



702 Dawn Ave.  
Thief River Falls, MN 56701  
218-681-8221 • 1-800-950-9917  
Email: sales@trs salvage.com • Website: www.trsalvage.com

**NEW AND USED FARM EQUIPMENT PARTS**

**We Buy Cars and Car Bodies** **We Sell Welding Supplies** **Roll-Off Boxes Available**  
**We Buy Aluminum Cans** **We Sell New Steel - Structural and Sheet** **We Buy Scrap Iron and Metals**

**Evans Scrap & Steel, Inc.**

218-681-3488 • Toll Free 1-800-906-3488  
13203 190th St. N.E. • Thief River Falls, MN

Winter Hours:  
7:30 - 4:30  
Monday-Friday

Electrical Contractor

Shop: (218) 253-4123  
Home: (218) 253-4127

**KEN'S ELECTRIC, INC.**

Red Lake Falls, Minnesota 56750

"We Service Our Work"

Contact Us For All Your Electrical Needs!

Allen Remick - Cell: (218) 689-0313  
Jason Knott - Cell: (218) 289-5104

## For sale

**FOR SALE** - Pro series trunion style weight distributing kit or stabilizer for pulling a camper. Helps to control the camper from swaying. 218-281-5981. Mike DuFault, 17998 230th St. S.W. Crookston, MN 56716.

## Late Model Auto Parts

**-National Parts Locator-**

Toll Free 1-888-560-5321  
Bus: 218-964-5321

**WE BUY PARTS CARS!**

20 Bakers St., St. Hilaire, MN  
Jeff Brouse & Brian Bugge, Owners

**B & B Auto Recycling, Inc.**

**DON'S MACHINE SHOP**  
ASE CERTIFIED REBUILDERS  
ALL GAS AND DIESEL ENGINES

	PRICE EXAMPLES:
•Automotive •Industrial	*GM 350 \$1,315 - \$1,419
•Marine •Agricultural	*GM 6.5 Diesel with new block \$5,330
•High Performance	*Ford 7.3 Diesel Powerstroke \$4,200
•Vintage Auto	
•Heavy Duty Diesel	

CALL FOR ESTIMATE!  
INSTALLATION AVAILABLE  
FOSSTON, MN  
**218-435-6379 or 1-800-448-1518**

All prices are with exchange on a rebuildable core.

**KM Transmission And Repair**

Quality • Experience  
Dependability • Honesty



**Fair Prices**

Its all just that simple. Keith Moen

Mon. - Fri. 8:00 am to 5:00 pm  
Sat. by appointment

(218) 681-4250

616 Davis Ave. N, Thief River Falls

## Burns Welding and Repair

- Skid-steer loader rental
- Farm machinery repair
- Custom cattle gates built to your needs
- Custom size hay feeders
- Portable welding
- Aluminum welding and tig welding

CALL SHOP  
**218-964-5444**

**LUMBER AND Building Supplies**



**ASK ABOUT OUR COMPLETE BUILDING PLANS SERVICES!**

We're glad to help you with any building problem you may have.

**Oklee Lumber, Inc.**  
**(218) 796-5131**

**Carpet ETC.** of St. Hilaire, MN  
**Flooring to Fit Every Lifestyle**  
Carpet, Vinyl, Ceramic, Laminate

*Quality Flooring at a price you can afford.*

310 Broadway • St. Hilaire, MN • (218) 964-5555 • M - F 9-5:30 & Sat 9-3 • Anytime By Appointment

**SCHAFER ELECTRIC**

**BRIAN SCHAFER**  
218-289-5430  
CELLULAR

**MIKE SCHAFER**  
218-289-5431  
CELLULAR

16483 120th Avenue SW  
Red Lake Falls, Minnesota 56750  
Office 218-253-2497

COMMERCIAL TRENCHING RESIDENTIAL FARM

## Self-Inking Stamps

*Available at the Gazette*

Self-Inking Stamps are the perfect choice! Signature, address, professional, logo and much more! Available in a variety of sizes and are completely customizable for your personal or business needs. We also do notary stamps.

Call the Gazette at 218-253-2594 or email rlfgaz@gvtel.com for pricing and additional information.

THE **GAZETTE**

Red Lake Electric Cooperative  
**Want Ad Order Form**  
Use this handy form to submit your want ads.  
**PLEASE PRINT.**

Mail or bring your ads to the RLEC office by the tenth of the month. Commercial ads are 10¢ per word with a minimum charge of \$4 per insertion.

\_\_\_\_\_  
\_\_\_\_\_  
\_\_\_\_\_  
\_\_\_\_\_  
\_\_\_\_\_  
\_\_\_\_\_  
\_\_\_\_\_  
\_\_\_\_\_  
\_\_\_\_\_  
\_\_\_\_\_

Member want ads are FREE. One want ad per member per month.

**Please PRINT . . .**

Your Name, Address and Phone Number. Mail with your power bill payment, if you prefer, or fax to 218-253-2630.

## SUBSCRIBE TO GAZETTE

Save at least \$23 annually over the newsstand price!

To subscribe just clip and fill out this form and bring it to the Gazette office at 105 Main Avenue in Red Lake Falls or mail to: The Gazette, PO Box 370, Red Lake Falls, MN 56750.

### THE GAZETTE SUBSCRIPTION RATES . . .

In Red Lake County, \$29 a year      In Minnesota, \$35 a year      Out of state, \$39 a year

Enclosed is a check for \$ \_\_\_\_\_ Send the Gazette to . . .

NAME \_\_\_\_\_

ADDRESS \_\_\_\_\_

CITY \_\_\_\_\_ STATE \_\_\_\_\_ ZIP \_\_\_\_\_



## 2011 Chevrolet Cruze ECO

1.4 cyl Turbo, 6-spd Manual, Cruise, USB port, Bluetooth, Crystal Red

**40 MPG**



Stock #18107

\$19,745

-500 Auto Show Rebate

**\$19,245**

**2.9%**  
for 60 months  
Available OAC  
In lieu of rebate

**5**

Cruze Models In Stock



Stock #18018

## 2011 Chevrolet Colorado Crew Cab

4x4 2LT, Power Windows & Locks, Tilt, Cruise, CD, Chrome Wheels, Trailer Pkg, Victory Red

\$30,100 MSRP

-2,000 Rebate

-500 Auto Show Rebate

-697 Thibert Discount

**\$26,903**

## 2011 Buick Lucerne CX

3.9 V-6, 6 Pass., Dual Zone A/C, Bluetooth, OnStar, XM, Alum. Wheels, Power Seat, Sand Beige

\$31,410 MSRP

-4,000 Rebate

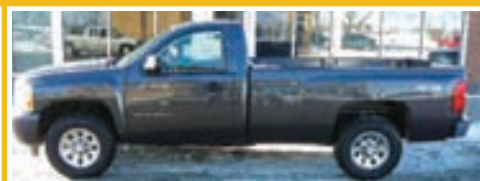
-625 Thibert Discount

**\$26,785**

Stock #18099



**1.9%**  
for 60 months  
Available OAC  
In lieu of rebate



Stock #18081

## 2011 Chevrolet Silverado Reg. Cab

4x4, W/T, 4.8 V-8, Power Locks with Keyless Entry, A/C, Tilt, Cruise, Chrome Wheels, Grille, Bumpers, Trailering Pkg, Taupe Gray

\$28,400

-2,000 Rebate

-2,005 Ally Down Pay Assist.

-1,000 Auto Show Rebate

-533 Thibert Discount

**\$22,862**

## 2011 Buick LaCrosse CXL

FWD, Heated Leather, Remote Start, Power Seat, MSRP \$34,690



Stock #18082

**\$32,100 Using Rebate\***  
or lease for  
**\$399<sup>59</sup> per month\***

\*\$1,500 Rebate must currently own '99 or newer non-GM Vehicle, Buick, Olds, GMC, Pontiac Vehicle

## 2011 Chevrolet Malibu 1LT

**33 MPG**

2.4 cyl, 6-spd Auto, Power Seat, Bluetooth, Remote Start, 17" Chrome Wheels, OnStar, XM, Red Jewel



Stock #18131

\$25,110 MSRP

-2,500 Rebate

-1,000 Rebate

-500 Auto Show Rebate

-580 Thibert Discount

**\$20,530**

**0.0%**  
for 60 months  
Available OAC  
In lieu of rebate



Stock #18141

## 2011 Chevrolet Impala LT

3.5 V-6, Power Windows & Locks, Tilt, Cruise, CD, OnStar, XM, Folding Rear Seat, Red Jewel

\$27,320 MSRP

-5,000 Rebate

-500 Auto Show Rebate

-366 Thibert Discount

**\$21,454**

**29 MPG**  
Full-Size Car

## 2011 Chevrolet Silverado Ext. Cab

4x4, LT1, 5.3 V-6, 6-spd Auto, 18" Wheels, All Star Pkg., Hitch, Bluetooth, Power Seat, Fog Lights, Z-71 Off Road

\$35,410 MSRP

-2,500 Rebate

-2,005 Ally Down Pay Asst.

-1,000 Auto Show Rebate

-1,671 Thibert Discount

**\$28,234**

Stock #18109



Stock #18143

## 2011 Chevrolet Silverado Crew Cab

ILT, 4x4, 5.3 V-8, 6-spd Auto, 18" Wheels, All STAR Pkg., Trailering Pkg., Bluetooth, Fog Lights, Dual Zone A/C, Power Seat

\$37,750 MSRP

-2,500 Rebate

-2,005 Ally Down Pay Assist.

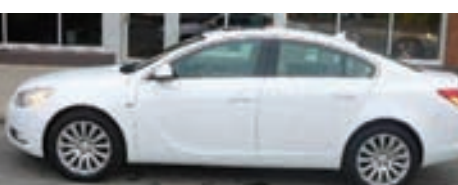
-1,000 Auto Show Rebate

-1,812 Thibert Discount

**\$30,433**

## 2011 Buick Regal CXL

Heated Leather, 2.4 4 cyl, 6-spd Auto, Power Sunroof, Rear Park Asst., Alum. Wheels, White



Stock #18025

\$28,840 MSRP

-1,500 Rebate

-610 Thibert Discount

**\$26,730**

**1.9%**  
for 60 months  
Available OAC  
In lieu of rebate

800-247-2438

**THIBERTS.COM**

Red Lake Falls

Rates as Low as

**1.9%**

on 7 Models

Dates 1/4/11 - 3/31/11

Select Chevrolet Silverado, Impala and Malibu

Select GMC Sierra and Acadia

Select Buick Enclave

Select Pontiac G6



**Certified**  
**USED VEHICLES**

**2.9%** up to 60 mos.  
for Qualified Customers,  
**2.9% up to 60 months!**

S, A & B Tier Customers/2006 and Newer under 75,000 miles  
Up to 60 mos. for Qualified Customers Only  
See your Local Ally Office for Details!

## Used Cars

2011 Chevrolet Impala LT, 2,495 miles, Red Jewel.....	\$19,900
2010 Chevrolet Cobalt LT, 7,000 miles, Victory Red.....	\$12,995
2010 Chevrolet HHR LT, Heated Leather, Sunroof, 7,200 mi, Quick Silver.....	\$15,900
2010 Chevrolet Impala LT, 16,900 mi, Htd Leather, Silver...	\$18,900
2010 Chevrolet Impala LT, Htd Leather, Gray, 15,750 mi.....	\$18,900
2010 Chevrolet Impala LT, 19,700 mi, Gray.....	\$16,900
2010 Chevrolet Impala LT, Heated Leather, 17,400 mi.....	\$18,900
2010 Chevrolet Impala LT, 22,600 mi, Goldmist.....	\$16,900
2010 Pontiac G6, Sunroof, 17,100 mi, Black.....	\$16,400
2010 Chevrolet Impala LT, Heated Leather, 8,700 mi.....	\$19,500
2010 Chevrolet Impala LT, Htd Lthr, Sunroof, 12,300 mi.....	\$18,999
2009 Chevrolet Impala LT, Heated Leather, 30,000 mi.....	\$15,995
2008 Chevrolet Malibu LT, Chrome Wheels, 42,800 mi.....	\$14,500
2008 Chevrolet Impala LT, Heated Leather, Chrome Wheels, 34,500 mi, Goldmist.....	\$14,800
2008 Chevrolet Impala LT, 47,600 mi, Gray.....	\$12,500
2009 Chevrolet Impala LT, only 800 miles, Heated Leather..	\$17,900
2007 Chevrolet Cobalt, 2 Dr, LS, 29,000 miles.....	\$7,995
2007 Chevrolet Impala LT, 61,900 miles, White.....	\$10,900
2006 Chevrolet Impala LT, 62,000 miles, Silver.....	\$10,900
2005 Nissan Altima, 90,000 miles, Bronze.....	\$8,500
2005 Cadillac Deville, 77,000 miles, White.....	\$9,900
2001 Volkswagen Beetle GLX, 90,000 miles, Red.....	\$8,500
2000 Chevrolet Monte Carlo SS, Sunroof, 144,000 mi, Red..	\$5,500

## Used SUVs and Vans

2010 Chevrolet Suburban LT, Heated Leather, Sunroof, DVD, 15,000 mi, Black.....	\$39,900
2010 Buick Enclave AWD CXL, Red Jewel, 15,900 mi.....	\$34,900
2010 Chevrolet Traverse AWD, 8 pass, 1LT, 10,900 mi, Red Jewel.....	\$28,900
2009 Saturn Vue FWD, Cloth, 13,200 mi, Red Jewel.....	\$19,900
2009 Saturn Vue FWD, Heated Leather Seats, V-6, 30,800 mi, White.....	\$18,900
2008 Hyundai Santa Fe SE AWD, 55,000 mi, Maroon.....	\$19,900
2007 Chevrolet TrailBlazer LS, 4x4, Sunroof, 71,000 mi, Silver.....	\$14,900
2005 Chevrolet Suburban LT, 4x4, Heated Leather, Navigation, Sunroof, 124,000 mi, Maroon.....	\$16,900
2005 Chevrolet TrailBlazer Ext, 4x4, LS, 124,000 mi, Silver..	\$9,900
2005 Chevrolet Equinox LT AWD, Htd Lthr, 43k mi, Black...	\$14,400
2004 Chevrolet Tahoe LT, 4x4, Heated Leather, Sunroof, 114,000 mi, Gray.....	\$14,900
2002 Olds Bravada AWD, 79,000 mi, Gray.....	\$8,995
2000 Chevrolet Suburban, 4x4, 159,000 mi, White.....	\$5,995
1999 Chevrolet Tahoe, 4x4, 88,000 mi, Red.....	\$6,995
<b>VANS</b>	
2010 Dodge Grand Caravan SXT, 24,000 mi, Blue.....	\$20,900
2004 Chevrolet Venture LS Van, 111,000 mi, Tan.....	\$6,900
2001 Ford Windstar Sport SE, 125,000 mi, Red.....	\$3,995

## Used Pickups

<b>CREW CABS</b>	
2010 Chevrolet Avalanche LS 4x4, 17,000 mi, Silver.....	\$29,500
2008 Chevrolet Silverado Crew 4x4 LT1, 71k mi, White.....	\$22,900
2008 Chevrolet Silverado Crew 4x4 LT1, 52k mi, Silver.....	\$25,500
2007 Chevrolet Silverado Crew 4x4, LT1, 46k mi, Silver.....	\$24,900
2006 Dodge Quad Cab 4x4 Hemi, 65,200 mi, Red.....	\$18,995
2005 Chevrolet Silverado Crew 4x4, 105,000 mi, Blue.....	\$18,500
2004 Chevrolet Avalanche 4x4 LS, 126,000 mi, Gold.....	\$14,900
<b>EXTENDED CABS</b>	
2009 Chevrolet Silverado Ext 4x4 LT, 49,000 mi, Blue.....	\$23,900
2008 Chevrolet Silverado Ext 4x4 LT, 27,000 mi, Black.....	\$23,900
2008 Chevrolet Silverado Ext 4x4 LT, 36,000 mi, Blue.....	\$23,900
2007 Chevrolet Silverado Ext Cab 4x4 LT, 68k mi, Blue.....	\$19,800
2007 Chevrolet Silverado Crew 4x4, 40,300 mi, Silver.....	\$21,995
2006 Chevrolet Silverado Ext 4x4 LT, Htd Lthr, 38k, Black..	\$21,500
2004 Chevrolet Silverado Ext Cab 4x4, 91k, Silver.....	\$15,500
2005 Chevrolet Silverado Ext Cab 4x4, 89,700 mi, Black.....	\$15,900
2005 Chevrolet Silverado Ext 4x4, 114k mi, Sport Red.....	\$12,900
2004 Chevrolet Silverado Ext LB LS, 4x4, 134k, Sport Red..	\$10,900
2004 Cadillac Escalade Ext AWD, 93,000 mi, Black.....	\$19,900
2003 Chevrolet Silverado Ext Cab 4x4, Leather, Silver.....	\$14,900
2002 Ford Ranger Ext 4x4, 110,000 mi, Maroon.....	\$8,900
2002 Chevrolet Reg Cab 4x2, 75,000 mi, White.....	\$7,900
<b>HEAVY DUTY TRUCKS</b>	
2004 Chevrolet Silverado Crew 2500HD Duramax 4x4, 164,000 miles, Charcoal.....	\$17,995
2007 Chevrolet Silverado Crew 3500HD Duramax, 4x4, 110,000 miles, Leather, Loaded, White.....	\$29,900

**THIBERT'S**  
**www.thiberts.com**

Red Lake Falls, minnesota • (800) 247-CHEV (2438)



**BUICK**

THE SPIRIT OF AMERICAN STYLE™



Gary Thibert

Chad Schmitz

Roger Dupont

**AN AMERICAN REVOLUTION**