



# Volts and Jolts

Published monthly for the members of  
**RED LAKE ELECTRIC COOPERATIVE, Inc.**

*One of the Minnkota Power Systems*

**SERVING THE FOUR-COUNTY AREA OF MARSHALL, PENNINGTON, RED LAKE AND POLK**  
*and a portion of the lands of the Red Lake Band of Chippewa*

VOL. 49 – NO. 7

RED LAKE FALLS (RED LAKE COUNTY), MINNESOTA 56750

APRIL 2014



**Milton R. Young Station**

## Milton R. Young Power Plant tour scheduled for June 25 and 26

Red Lake Electric Cooperative and Clearwater-Polk Electric Cooperative plan to cosponsor a tour of the Milton R. Young Power Plant June 25 and 26.

The first day of the trip will include a stop at Minnkota Power Cooperative's headquarters in Grand Forks. A relaxing evening will be spent at the Seven Seas Motel in Mandan, which will include a banquet sponsored by Minnkota Power Cooperative.

The second day of the tour includes visiting the Milton R. Young generation station near Center, N.D. It will also include a drive through the open pit lignite mines (weather permitting) to see the mining operation first hand. You are guaranteed to have a better understanding of the

process involved with generating the electricity that serves you.

The cost to participate in the tour is \$80 per person, double occupancy, \$100 single occupancy. This includes transportation, meals and lodging. The tour is open to all Red Lake Electric Cooperative members and/or spouses.

The tour group will depart from Red Lake Electric Cooperative's (7722001.06, K.J. and Peggy Schouviller) headquarters in Red Lake Falls at 7 a.m. Wednesday, June 25. Approximate time of return is 9 p.m. Thursday, June 26.

Registrations and payment are due by June 10.

If you have not partaken of this tour, sign up today for a learning experience.

## Three incumbant directors re-elected at annual meeting



**Bonnie Christians**  
*District 1*

Bonnie Christians lives in the Gentilly area with her husband, Scott. Together they have five children and 14 grandchildren. Scott works at American Crystal Sugar Company as a shift supervisor.

Working with Stenshoel-Houske Funeral Home, Christians assists families with preplanning and prefunding funeral arrangements.

Additional part-time employment includes her work with New Horizons, providing services, including mediation, for people addressing issues of custody of minor children, parenting time schedules, divorce, division of marital assets and workplace conflict.

Christians completed her fourth term as a Red Lake Electric Cooperative director currently serving as president.

She also serves as an ex-officio member of the Red Lake Electric Trust Board. The Trust Board oversees the Operation Round Up Program.

"It has been an honor to be a part of such an outstanding Cooperative," Christians said. "I look forward to continuing my association and serving the members of Red Lake Electric."



**Steve Linder**  
*District 4*

Steve Linder is a native to the Oklee area and lives with his wife, Donna, on their farm north of Oklee. They have three children: Amber, Ben and Levi.

The Linders are engaged in grain farming, which includes raising wheat, soybeans and corn. During the winter months, Steve spends a good share of his time doing farm equipment maintenance in his farm shop. Donna works as a paraprofessional with RLCC school district.

Linder has served as a Red Lake Electric Cooperative director for twelve years. He also serves as president of the Red Lake County Farmers Union and is a supervisor on the Games Township Board.

"I find it very interesting to serve as a director of Red Lake Electric Cooperative," Linder said. "I will continue to do my best in serving the Cooperative and its members."

Linder is Red Lake Electric's representative on the Square Butte Power Cooperative Board. Square Butte is the owner of the second coal fired power plant at the Milton R. Young Station near Center, N.D.



**Mark Hanson**  
*District 5*

Mark Hanson lives east of Thief River Falls with his wife, Audrey. They have four children: Ehren, Seth, Ingrid and Kjell, and nine grandchildren.

Hansons are retired from their grain and cattle farming operation which has been assumed by their son. Audrey is a retired RN. They enjoy spending time at their lake cabin.

Hanson has served as a director of Red Lake Electric Cooperative for nine years currently serving as secretary/treasurer. He also serves as chairman of the Pennington County Township Officers Association and as clerk of Silverton Township. The Hansons are members of Evangelical Free Church of Thief River Falls.

"Electricity plays a vital role in everyone's life, whether in our work, our homes or in our recreation," Hanson said. "Much of the quality of life as we live it today relates directly to the use of electricity."

"I look forward to serving another three years as director of the Cooperative and thank the people of the district for their continued support," Hanson said.

### Power Plant Tour Registration

**June 25 and 26, 2014**

Sign up deadline is June 10, 2014



NAME OF PARTICIPANTS \_\_\_\_\_

ADDRESS(ES) \_\_\_\_\_

TELEPHONE NUMBER \_\_\_\_\_ NUMBER OF PARTICIPANTS \_\_\_\_\_

ACCOUNT NUMBER \_\_\_\_\_ AMOUNT ENCLOSED \_\_\_\_\_

**\$80 Per Participant, Double Occupancy • \$100 Per Participant, Single Occupancy**

Return to RLEC, P.O. Box 430, Red Lake Falls, MN 56750, along with your check. RLEC will contact you later with details. Your check or deposit will be returned if the tour should be cancelled for some reason. If it becomes necessary for you to cancel out on the trip, it is required that you notify RLEC at least 48 hours before departure to be eligible for a refund. Registration for the trip is on a first-come, first-served basis with a limited number of openings. If you have previously partaken of the trip, you will be put on a space availability standby.

## RLEC 76th annual meeting "Your Reliable Energy Partner"

The 76th annual meeting of Red Lake Electric Cooperative was held March 26 in the Imperial Room of the Ralph Engelstad Arena in Thief River Falls. The meeting was attended by approximately 250 Cooperative members and guests.

President Bonnie Christians called the meeting to order at 10:30 am. In her President's report, Christians explained the cooperative's association with the National Rural Electric Cooperative Association and how this network of some 900 rural electric Cooperatives across the nation, is helping electrify the world, one village at a time. Christians said that there are two billion people in the world that do not have access to electricity. Christians then introduced a video of the NRECA international foundation and the story of how electric cooperatives brought electricity to a village in Guatemala.

Roger Johanneck, general manager, gave a report on the Cooperatives activities during the past year and commented on the construction work that was done to help Red Lake Electric Cooperative continue on its history of being a reliable energy partner. Johanneck explained

how the good year enabled the Cooperative to issue a rebate on the members December energy bills in addition to retiring over a half-million dollars in equity to the membership. An increase in energy sales and expenses coming in under budget both contributed favorably to the cooperatives operating margin.

Johanneck also mentioned that Minnkota Power built a new substation to improve service and serve load in the southwest part of the Cooperative's service area. The new "Gentilly Creek" substation will serve loads previously served out of the Huot and Terrebonne substations.

Shirley Bregier, office manager, next gave the 2013 financial report and said energy sales were up from the previous year largely as a result of a colder winter to (7033002.02, Tim Chaput) start and end the year and increased use of grain drying and handling equipment during the harvest.

The Cooperative sold 129.2 million kWh's in 2013. Revenues were \$13.6 million, the cost of wholesale power was \$9.7 million and operating expenses were \$1.8 million. Bregier said the Cooperative's margin was \$1.1 million; this is

the amount that is allocated back to the members as capital credits. Bregier reviewed various operating expenses, fixed expenses and items on the balance sheet. She said RLEC's cost of wholesale power comprises three-fourth of the Cooperative's cost of doing business. *(cont. on page 6)*

### In this month's Volts and Jolts

**Page 2**  
*Manager's Comments*

**Page 3**  
*Recipe Corner*  
*From the Mail Bag*  
*Degree Days*

**Page 4**  
*Feature of the Month*  
*Community Church*  
*International celebrates*  
*30 years*

**Page 5**  
*Employees receive safe*  
*worker awards*  
*Organ donations save*  
*lives*

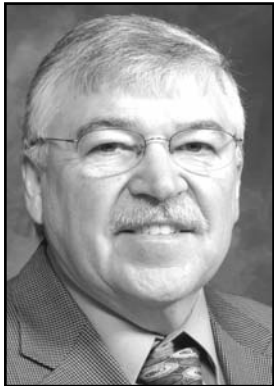
**Page 6**  
*Pictures from annual*  
*meeting*

**Page 8**  
*Using caution may*  
*prevent electrical*  
*accidents on the farm*



Red Lake Electric Cooperative's annual meeting attendees totalled approximately 250. The social time, prior to the call of the meeting, allows for attendees to review handout information and catch up on the latest with their friends and neighbors. The cooperative's 76th annual meeting was held March 26. Additional meeting pictures appear on page six.





Manager's Comments

by Roger Johanneck



Main Street in Menomonee Falls:

Advertising experts tell us that if we want a message to stick, we need to repeat it. And repeat it. And repeat it.

Safety is one such message we repeat a lot to employees and members, and rightfully so; it's a message that needs to stick with us.

There are too numerous messages and lessons I (4707002.07, Gerald Tharaldson) wished would have stuck better from my early years but, somehow, they have escaped me. Who hasn't visited with a friend who's noted, "I remember the jokes and pranks from school but why don't I remember the important stuff; the lessons taught to us in school?"

My high school and college summers spent working construction in Wisconsin exposed me to the consistent advertising jingle of car dealer Ernie Von Schledorn. No one living in the Milwaukee area with a radio escaped the repetitive ads where Ernie asked his listeners: "Who do you know wants to buy a car?" Ernie then wisely planted the address of his dealership in your mind with a catchy tune, ending his advertisement in song "Main Street in Menomonee Falls."

I literally heard Ernie Von Schledorn's ad hundreds of

times during the summers of the early 70's. Over 40 years later his car advertisement is still with me. The experts must be right; repetition.

The repetition of our safety message to the employees of Red Lake Electric comes in a few different forms. We hold periodic safety meetings, numerous safety bulletins are posted, a safety board in the workplace tracks dates and days worked since the last lost time accident and annually we recognize employees who have reached five-year increments of no lost time accidents.

In addition, crews hold tailgate sessions at the job site to discuss how their work tasks are to be safely accomplished.

The safety message to members is repeated in this newsletter, at membership meetings and via radio ads. This month you will notice I have included a repeat of a quick take graph I used last year to compare the number of accidental member contacts with poles, guy wires, power lines and other electrical equipment.

Last year there were 15 accidental contacts with Red Lake Electric's electrical system. As the Quick-Take graph to the right shows, 2013 was an improvement over the past two years and one less contact than the average experienced since

2007.

In hopes that something can be learned from knowing the mistakes of others, a recap of how these accidents occurred were as follows.

- Truck backed into pole
  - Cultivator hit wire
  - Tractor drove over pole
  - Farm implement snagged wire
  - Crop sprayer hit guy wire and broke pole
  - Crop sprayer wrapped in wires
  - Tractor mower broke guy wire and drug into phase wire
  - Tractor mower snagged and broke off underground cable on riser pole
  - Tractor hit and broke power line pole
  - Backhoe dug into buried cable
  - Combine auger hit and wrapped in power line wire
  - Wind blew ladder into secondary wires
  - Tractor hit guy wire
  - Backhoe dug into marked underground lines
  - Tractor hit power line pole (4403020.01, Leslie J. Snetting)
- Many of you are busy or will soon be busy getting ready for planting crops. Because spring and fall are the times when we see most line and equipment contacts, our plea to think safety as you go about your work bears repeating.

We recommend before you move equipment around your yards, down roads, across ditches and fields, take time for a tailgate session with those who will be working with you and discuss where overhead power lines, power line poles, anchors, electrical equipment, such as pad transformers, and other hazards are located.

Just a few minutes explaining what to do, and what not to do, can make a big difference for you, your family and co-workers.

Imagine if Ernie Von Schledorn were in your shoes talking safety to your helpers. I bet he'd start out by asking: "Who do you know that wants to avoid an accident?"

**Annual Meeting:** The Cooperative's 76th annual meeting is now in the books and we can officially put 2013's business to rest.


On behalf of your directors and employees here at Red Lake Electric, I'd like to pass on our thanks to the 250 members and guests who attended this year's annual meeting. I hope you found your time with us to be time well spent.

We appreciate hearing from members who attend the meeting. Your thank you's and comments influence how we prepare for future meetings.

If you have a comment/idea for us to consider for a future meeting, we'd like to hear from you.


**0% for 60 months\***  
AND  
**\$1,250 OFF\***

1 Family 1023E and 1025R with the purchase of two or more implements




**0% for 60 months\***  
OR UP TO  
**\$2,000 OFF**

5D/5E Series Tractor



**0% for 60 months\***  
AND  
**\$1,000 OFF\***

3E Series Tractor with the purchase of two or more implements



**SEASON**

**So many tractors. So many savings.**

It's Deere Season and time to save big on John Deere utility tractors. Get comfort, versatility, and the power you want along with a variety of ways to save on new 1 Family, 3E, 5D or 5E Series Tractors. Plus over 600 Frontier implements, too. But it's all for a limited time. So stop by or call today.

JohnDeere.com/Ag

**Valley Plains Equipment**

723 3rd Ave SW  
Crookston, MN 56716  
(800)598-5553  
(218)281-3683  
[www.valleyplainsequipment.com](http://www.valleyplainsequipment.com)

• Jamestown • Valley City • Galesburg  
• Hunter • Hillsboro • Crookston

\*Offer valid 4/1/2014 through 4/30/2014. Subject to approved credit on John Deere Financial Installment Plan. Fixed Rate of 0.0% for 60 months. \$1,250 OFF Implement Bonus on 1023E and 1025R Tractors. \$1,000 OFF implement bonus on the 3E Series Tractors. Implement Bonus is in addition to Low Rate financing and requires the purchase of 2 or more qualifying John Deere or Frontier implements. \$41,500 OFF or Fixed Rate of 0.0% for 60 months on 5D/5E Series 45-75 hp Tractors. \$2,000 OFF or Fixed Rate of 0.0% for 60 months on 5E Series 85-100 hp Tractors. Some restrictions apply, so see your dealer for complete details and other financing options. Valid only at participating US dealers.

A0802KKBU2F59251-00000000

**Mission Statement**

It is the mission of Red Lake Electric Cooperative to enhance the quality of life for people of our service area by consistently providing quality electric service and other valued services while holding our employees, our community and our environment in high regard.



**Red Lake Electric Cooperative, Inc.**

*One of the Minnkota Power Systems*

**RED LAKE ELECTRIC COOPERATIVE, Inc.**

**VOLTS & JOLTS**


(USPS 663-400)

Published monthly by the Red Lake Electric Cooperative, Inc., 412 International Drive SW, Red Lake Falls, Minnesota 56750-0430, in the interest of its members and others. Periodical Postage Paid at the U. S. Post Office in Red Lake Falls, Minnesota 56750. POSTMASTER, SEND ADDRESS CHANGES TO Volts & Jolts, c/o Red Lake Electric Cooperative, Inc., P. O. Box 430, Red Lake Falls, Minnesota 56750-0430. E-mail: [redlake@minnkota.com](mailto:redlake@minnkota.com)

**OFFICERS AND DIRECTORS**

PRESIDENT ..... Bonnie Christians  
VICE PRESIDENT ..... Randy Versdahl  
SECRETARY-TREASURER ..... Mark Hanson  
DIRECTORS ..... Kelly Lundeen,  
Robert Finstad, Steven Linder,  
Peter Mosbeck, Colette Kujava,  
Stacy Blawat

**Subscription Rate \$2.50 per year**



**NOTICE**

Hidden within the text of the articles of this issue of the Volts & Jolts are the names and account numbers of some RLEC members. They will appear within the articles in parenthesis as such (9999999.99 Roger P. Member). If you find your name and account number, clip it out and send it with your next payment. You will be credited with \$5 on your electric bill.

**Happy Easter**

May you and your loved ones experience the joy and blessing of Easter.

From your friends at Red Lake Electric Cooperative.

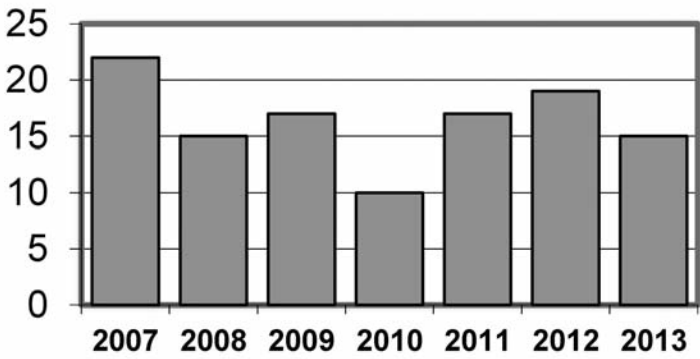


**QUICK TAKES**

**A look at some statistics from your Red Lake Electric Cooperative**

The Chart below indicates the number of times a car, truck, tractor, combine implement, airplane, auger and tree made contact with Red Lake Electric Cooperative's poles, guy wires and powerlines during the past seven years. Spring planting and Fall harvesting are times when these accidental contacts most commonly occur. Take time now to reacquaint yourself, your employees and your family with the electrical equipment you will be working around. As the chart indicates below; we can do better to avoid vehicle and equipment contacts with poles, guy wires and powerlines.

**Vehicle & Equipment Contacts**



Year	Accidental Contacts: Poles, Guy Wires & Powerlines
2007	22
2008	15
2009	17
2010	10
2011	17
2012	19
2013	15



**Red Lake Electric Cooperative, Inc.**

*One of the Minnkota Power Systems*

**Things you should know about your electric service**

**BILLINGS AND COLLECTION**

You will receive your energy bill on or near the 20th of each month.

Payment of your monthly energy bill is due on the 20th of the month. You may pay your bill in person at RLEC during office hours, use the 24-hour drive-up drop box located next to the RLEC office, by Auto Pay, or by mail. Payment must be in the office, drop box, Auto Pay, or in the mail, as evidenced by the postmark, by the 5th day of the following month to avoid a late payment charge. A 1 1/2% monthly late payment charge will be computed on delinquent energy bills, the minimum late payment charge will be \$1.00.

If your payment is not received by the 15th of the month, a final notice of disconnection statement will be included on your following bill. The final notice statement will notify you when your electric service will be disconnected if the delinquent amount remains unpaid. If an employee is sent to disconnect your electric service, a \$60 collection fee will be charged to your account, even if you pay the collector.

To have a disconnected service reconnect, all amounts owing, a \$60 reconnection fee, and a security deposit must be paid. If the service must be reconnected after normal working hours, a \$120 reconnection fee must be paid.

**BAD CHECKS**

A \$15 charge will be levied each time a check is returned because of nonsufficient funds, account being closed or payment stopped.

**OUTAGES**

In case your electricity goes out, please do the following:

1. Check your fuses or breakers at the yard pole or meter pedestal.
2. Call your neighbor to see if they are out of electricity also.
3. Call the RLEC office (218-253-2168 or 1-800-245-6068) during working hours or 218-253-2200 after hours. We will accept collect calls for outages only.

**METER TESTS**

RLEC has a schedule in place to have its meters periodically tested for accuracy. Results from these tests show that meters generally slow down with age; however, if you think that your meter is recording too much usage, RLEC will test it for accuracy. You must pay a test fee in advance of the test. If the meter test shows that the meter was inaccurate, the test fee will be refunded to you.

**STOPPED METERS**

If you find your meter has stopped and you are using electricity, please contact the office immediately so we can replace it. Average consumption will be billed to the member for the time the meter was stopped so there is no advantage in not reporting a stopped meter.

**METER READINGS**

An automated meter reading system is utilized to obtain monthly meter readings. Although the system is normally reliable, there is always a chance that the correct reading has not been transmitted to the office for billing. Customers should periodically read their meter and compare it to the reading on the billing statement. If the actual reading is not close to the billing statement reading, please call the office.

**GENERAL SERVICE RATES**

Facilities charge variable \$27 to \$35 month

April-December ..... 9.5¢ Kwh  
January-March ..... 9.9¢ Kwh

Multiphase users add \$22/month cost of service charge.

Standby, \$12/month (meter disconnected but the power line retained; standby is not available on services larger than 15 KVA transformer capacity).

Security light: high pressure sodium, \$8/month; mercury vapor, \$9/month; water heater flat credit, \$7/month (January-April billing); off-peak equipment charge, \$5.50/month per heat meter; off-peak energy rate: 5.5¢/kWh long-term control, 7.5¢/kWh short-term control.



# Recipe Corner



## Pork Roast with Fruit Sauce

1 pork loin roast with bone (3-4 pounds)  
1 jar (10 ounces) apple jelly  
1 C. apple juice  
1/2 tsp. ground cardamom  
3/4 cup chopped dried apricots  
1 Tbsp. cornstarch  
2 Tbsp. water  
In a bowl, combine the flour, 1/4 C. sugar, baking powder and salt; cut in butter until mixture resembles coarse crumbs. Press onto the bottom and 1 in. up the sides of a greased 13-in. x 9-in. x 2-in. baking dish. Arrange peaches over crust. Combine cinnamon and remaining sugar; sprinkle over peaches. Bake at 400° for 15 minutes.  
Meanwhile, in a bowl, combine egg yolks and sour cream. Spread evenly over peaches. Combine sugar and cinnamon; sprinkle over top. Bake 30-35 minutes longer or until golden. Serve (4207001.03, Larry Martinson) warm or cold. Store leftovers in the refrigerator.  
**Yield:** 10-12 servings.

## Lemon Parsley Potatoes

3 pounds small red potatoes, quartered  
1/2 cup butter or margarine, melted  
3 Tbsp. lemon juice  
3 Tbsp. minced fresh parsley  
Cook potatoes in boiling salted water until tender, about 15 minutes; drain. Combine butter, lemon juice and parsley; pour over the potatoes and stir gently to coat.  
**Yield:** 10-12 servings.

## Broccoli Tomato Salad

1 large bunch broccoli, separated into florets  
2 large tomatoes, cut into wedges 3/4 cup sliced fresh mushrooms  
2 green onions, sliced  
DRESSING:  
3/4 C. olive or vegetable oil  
1/3 C. tarragon or cider vinegar  
2 Tbsp. water  
1 tsp. lemon juice  
1 tsp. sugar  
1 tsp. salt, optional

3/4 tsp. dried thyme  
1 garlic clove, minced  
1/2 tsp. celery seed  
1/4 tsp. Italian seasoning  
1/4 tsp. lemon-pepper seasoning  
1/4 tsp. paprika  
1/4 tsp. ground mustard

Cook broccoli in a small amount of water for five minutes or until crisp-tender. Rinse with cold water and drain. Place in a large bowl; add tomatoes, mushrooms and onions. Combine dressing ingredients in a jar with a tight-fitting lid; shake well. Pour over salad; toss gently. Cover and chill for one hour. Serve with a slotted spoon.  
**Yield:** 6-8 servings.

## Zucchini Cake

2-1/2 C. all-purpose flour  
2 C. sugar  
1-1/2 tsp. ground cinnamon  
1 tsp. salt  
1/2 tsp. baking powder  
1/2 tsp. baking soda  
1 C. vegetable oil  
4 eggs  
2 C. shredded zucchini  
1/2 C. chopped walnuts,  
optional FROSTING:  
1 package (3 ounces) cream cheese, softened  
1/4 C. butter or margarine, softened  
1 Tbsp. milk  
1 tsp. vanilla extract  
2 C. confectioners' sugar  
Additional chopped walnuts, optional

In a mixing bowl, combine flour, sugar, cinnamon, salt, baking powder and baking soda. Combine oil and eggs; add to dry ingredients and mix well. Add zucchini; stir until thoroughly combined. Fold in walnuts if desired. Pour into a greased 13-in. x 9in. x 2-in. baking pan. Bake at 350° for 35-40 minutes or until a toothpick inserted near the center comes out clean. Cool. For frosting, in a small mixing bowl, beat cream cheese, butter, milk and vanilla until smooth. Add confectioners' sugar and mix well. Frost cake. Sprinkle with nuts if desired. Store in the refrigerator.  
**Yield:** 20-24 servings.

## German Chocolate Birthday Cake

1 package (4 ounces) German sweet chocolate  
1/2 C. water  
1 C. butter or margarine, softened  
2 C. sugar  
4 eggs, separated  
1 tsp. vanilla extract  
2-1/2 C. cake flour  
1 tsp. baking soda  
1/2 tsp. salt  
1 C. buttermilk  
COCONUT-PECAN FROSTING:  
1 C. evaporated milk  
1 C. sugar  
3 egg yolks, lightly beaten  
1/2 C. butter or margarine  
1 tsp. vanilla extract  
1-1/3 C. flaked coconut  
1 C. chopped pecans

**Dear RLEC,**  
Thank you! Thank you! Thank you! I appreciate receiving the bread machine from Red Lake Electric very much.  
**Jean Beyer**  
**Red Lake Falls**

**Dear RLEC,**  
Thank you for the George Foreman Grill I won at the annual meeting. As usual the meeting was very informative and the meal was delicious.  
**Don Majeres**  
**Red Lake Falls**

**Dear RLEC,**  
Thank you for the jigsaw I won at the annual meeting.  
**Sharon Riendeau**  
**Brooks**

**Dear RLEC,**  
Thank you for the George Foreman Grill I won at the Oklee District meeting.  
**Sharon Larson**  
**Oklee**

**Dear RLEC,**  
Thank you so much for the DeWalt heavy duty cut-out tool I won at your annual meeting in TRF. My husband will enjoy using it. The meal was delicious and it was so nice to be served by the employees. Thanks again.  
**Clarice Stolaas**  
**Oklee**

**Dear RLEC,**  
Thank you so much for the Presto electric skillet and the Visa gift card I won at the annual meeting! It's very much appreciated. Thanks, too, for the great lunch and information.  
**Paula Adamson**  
**Thief River Falls**

**Dear RLEC,**  
Thanks so much for drawing my name in the drawing at the annual meeting. Thanks also for the delicious meal you served us.  
**Harley Knutson**  
**Thief River Falls**

**Dear RLEC,**  
Thank you for the well planned meeting, the delicious dinner and for the gift I received. It was a most enjoyable day. Thank you.  
**Lucille Myers**  
**Thief River Falls**

**Dear RLEC,**  
Thank you for the corn popper I won at the (3736016.02, Steve Wigand) annual meeting in TRF. Also, thanks for the great meal which was served to all!  
**De Etta Hanson**  
**Newfolden**

**Dear RLEC,**  
Thank you for your donation of milk and ice cream to the Sunview Dining Center. It is quite the treat for our seniors and greatly appreciated!  
**Gail Healy, Site Manager**  
**Sunview Dining, RLF**

**Dear RLEC,**  
Thank you for coming and restoring our power after our shop fire. We can't say thank you enough.  
**Adam, Sarah, Caden,**  
**Trevor & Jacob Lee**  
**Trail**

**Dear RLEC,**  
Thank you for the money you gave the Strandquist Food Shelf. \$500 will buy a lot of food for the needy in our area.  
**Gula Stromgren**  
**Strandquist Food Shelf**

**Dear RLEC,**  
Thank you so much for your generous donation. We are very excited to purchase our new pagers!  
**Tandra Landman**  
**RLF Volunteer Ambulance Association Treasurer**

**Dear RLEC,**  
Thank you for believing in the American Cancer Society (ACS). Very good use is made of the Operation RoundUp funds. Thank you.  
**ACS-Red Lake County Unit**

**Dear RLEC,**  
On behalf of the staff and clients of the Inter County Nursing Service I would like to thank you for the Operation RoundUp grant we received. This is a great help to the clients that we serve in receiving home care services. Once again, thank you for the grant.  
**Anita B. Cardinal, PHN**  
**Inter County Nursing Services Director**

**Dear RLEC,**  
A sincere thank you for

In a saucepan over low heat, stir chocolate and water until chocolate is melted. Cool. In a mixing bowl, cream butter and sugar. Add egg yolks, one at a time, beating well after each addition. Add chocolate mixture and vanilla; mix well. Combine flour, baking soda and salt; add alternately with buttermilk to creamed mixture. In another mixing bowl, beat egg whites until stiff peaks form; fold into batter. Line a greased 13-in. x 9-in. x 2-in. baking pan with waxed paper. Grease and flour the paper. Spread batter evenly in pan. Bake at 350° for 50-55 minutes or until a toothpick inserted near the center comes out clean. Cool in pan for 10 minutes; invert onto a wire rack to cool completely. Remove waxed paper. For frosting, combine milk, sugar, egg yolks, butter and vanilla in a saucepan; cook and stir over medium heat until thickened. Remove from the heat; stir in coconut and pecans. Beat until frosting is cool and reaches desired spreading consistency. Place cake on a serving platter; spread frosting over top and sides.  
**Yield:** 12-15 servings.

## Apricot Gelatin Salad

1 package (6 ounces) apricot or orange gelatin  
2 C. boiling water  
1 can (20 ounces) crushed pineapple  
1 package (8 ounces) cream cheese, softened  
1 can (15 ounces) apricot halves, drained and chopped  
1/2 C. chopped walnuts  
1 carton (8 ounces) frozen whipped topping, thawed  
Additional chopped walnuts, optional

In a bowl, dissolve gelatin in water. Drain pineapple, reserving juice. Add pineapple to gelatin and set aside. In a mixing bowl, beat cream cheese and pineapple juice until smooth. Stir in gelatin mixture; chill until partially set, stirring occasionally. Stir in apricots and walnuts. Fold in whipped topping. Pour into a 13-in. x 9-in. x 2-in. dish. Sprinkle with walnuts if desired. Chill until firm.  
**Yield:** 12-16 servings.

## Lemon Bread Pudding

3 slices day-old bread, cubed  
3/4 C. raisins  
2 C. milk  
1/2 C. sugar  
2 Tbsp. butter or margarine  
1/4 tsp. salt  
2 eggs  
1 tsp. vanilla extract  
LEMON SAUCE:  
3/4 C. sugar  
2 Tbsp. cornstarch  
1 C. water  
3 Tbsp. lemon juice  
2 Tbsp. grated lemon peel  
1 Tbsp. butter or margarine

Toss bread and raisins in an ungreased 1-1/2-qt. baking dish. In a saucepan, combine milk, sugar, butter and salt; cook and stir until butter melts. Remove from the heat. Whisk eggs and vanilla in a small bowl; gradually stir in a small amount of the hot mixture. Return all to the pan and mix well. Pour over bread and raisins. Set the dish in a larger baking pan; add 1 in. of hot water. Bake, uncovered, at 350° for 50-60 minutes or until a knife inserted near the center comes out clean. For sauce, combine the sugar and cornstarch in a saucepan. Stir in water until smooth; bring to a boil over medium heat. Boil for 1-2 minutes, stirring constantly. Remove from the heat; stir in lemon juice, peel and butter until butter melts. Serve over warm or cold pudding. Refrigerate any leftovers.  
**Yield:** 6 servings.

# From the Mail Bag

donating the table top barbecue grill which was auctioned off at our benefit Friday, April 4. Your support is very much appreciated by the Goodridge Senior Center members. The auction was very successful and we thank you again for your contribution.

**Lynn Hanson**  
**Goodridge Senior Center member**

**Dear RLEC customers,**  
The Goodridge Senior Citizen members would like to take this opportunity to say thank you for the generous donation of \$1,000. The money will be used to replace the deteriorating cultured stone on our building this spring.

RLEC customers can be very proud that 93 percent of us donate to Operation RoundUp. A special thanks to the Board of Directors for donating their time to determine grants for area organizations.

**Gordy Henrickson, on behalf of the Goodridge Senior Center members**

**Dear RLEC,**  
We have seen many miracles. Domestic violence and sexual assault victims have taken huge steps to live better lives and we are amazed at the amount of courage displayed by those who reach out to us and we are honored to be here for them.

Thank you for being a big part of what we do. Your recent contribution of \$1000 to Violence Intervention Project (VIP) received on March 27 is deeply appreciated! Funds have been applied toward operation of our Umbrella Tree services as indicated on our application.

You are helping us reach our goal of raising \$80,000 for our current operating year with your thoughtful gift. About 20 percent of our day-to-day operating expenses are paid by cash donations. Also, your cash donation expands in value as it becomes matching dollars for grant funding. Your gift works hard to help victims of domestic violence and sexual assault.

**Sandra Bentley**  
**VIP Executive Director**

**Dear RLEC,**  
We want to thank you for

your sponsorship on the corporate level for the 2013 Red Lake County Relay for life. Last year's Relay cleared over \$68,000 thanks to people like you. The RLC Relay for Life will be held once again in Oklee on June 6 and 7.

All of us know someone who has suffered the effects of cancer in some way, whether it's you, your spouse, a family member or a friend that has suffered with this devastating disease. You may already be aware that all the money raised from this event will create awareness, provide prevention education and treatment to patients. Locally we get services for many items needed by patients going through cancer, including gas cards to help with traveling for treatments.

We greatly appreciate all you can do to support the 2014 Relay for Life, just as you have done in the past.

**Sara Olson**  
**American Cancer Sponsorship Volunteer**

**Dear RLEC,**  
My wife, Emma, and I wish to thank Red Lake Electric Cooperative, Inc. and Minnkota Power Cooperative, Inc. for the Meco Lock & Go portable electric grill and \$50 Visa gift card we were awarded at the 76th annual meeting in TRF on March 26. We also wish to extend our sincere appreciation to staff and all who were involved with the success of the meeting, program and noon meal.  
We ask that you thank Minnkota Power Cooperative, Inc. for the \$50 gift card which they provided and convey our appreciation to Luther Kvernem for his very informative presentation.

As members of RLEC since 1999, we feel blessed to have such a well organized group of people providing us with reliable (and relatively inexpensive) electric service. The video of the volunteer linemen and others working in Guatemala to bring electric service to that part of the world was very humbling. Many people in the United States of America do not realize how fortunate we are to have electricity so readily available.

**Jack & Emma McKeever**  
**Red Lake Falls**

## Red Lake Electric Cooperative, Inc. Operating Report MONTHLY COMPARISON

	FEBRUARY 2013	FEBRUARY 2014
Total Revenue .....	\$1,581,631	\$ 1,690,497
Total Margins .....	\$ 309,878	\$ 413,433
Cost of Power .....	\$1,001,644	\$ 1,016,431
KWH's Purchased .....	16,463,069	16,498,206
Capital Credits Paid to Estates ..\$	16,817	\$ 8,887

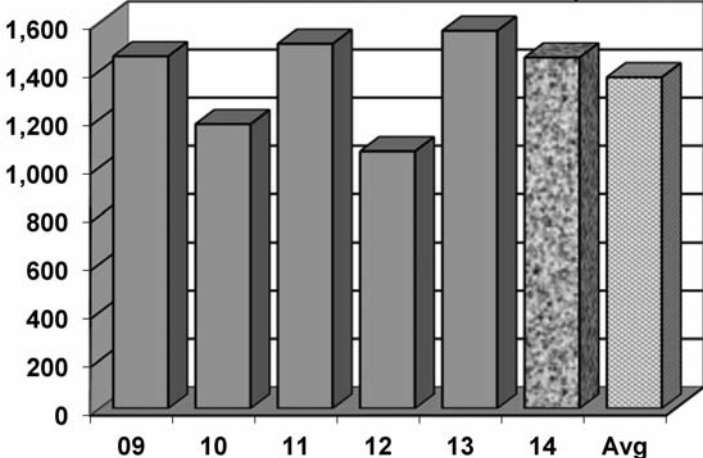
## YEAR TO DATE COMPARISON

	FEBRUARY 2013	FEBRUARY 2014
Total Revenue .....	\$3,097,892	\$3,394,774
Total Margins .....	\$ 537,206	\$ 712,046
Cost of Power .....	\$2,026,479	\$ 2,094,998
KWH's Purchased .....	32,976,169	34,574,248
New Service Connections .....	7	1
Customers Served .....	5,233	5,284
Capital Credits Paid to Estates ..\$	0	\$ 13,236
Miles of Line		
Overhead .....	2,323	2,323
Underground .....	249	264

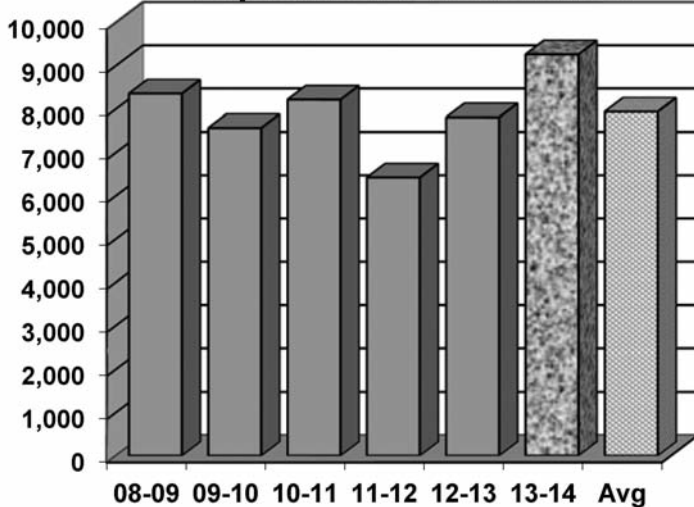
# DEGREE DAYS

To determine degree days, you must calculate the daily mean temperature for the time period you are measuring. Degree day computation is based on the assumption that a building does not require any heat if the outside temperature averages 65 degrees during a 24-hour period. To obtain a degree day figure, the high temperature and the low temperature for the day are added and the total divided by two. That figure is then subtracted from 65. For example, if the high temperature was 30 degrees and the low temperature 10 degrees, the figure would be 30+10=40; 40/2=20; 65-20=45. This would be a 45-degree day. The higher the degree day figure, the more heat required to warm your home.

## DEGREE DAYS March 1 - March 31, 2014



## Year To Date September 1 to March 31



## Farmers Union Oil Company

Thief River Falls 218-681-3512



- Fertilizer
- Petroleum products
- Town and country deliveries
- Tires, batteries, accessories
- Farm supplies

## WILCOX PLUMBING AND HEATING, Inc.

RED LAKE FALLS

Plumbing/Heating/Air conditioning

BILL H. MOSER, Master Plumber  
License No. 1770PM  
BILL J. MOSER, Master Plumber  
License No. 6039PM  
JASON JOHNSRUD, Master Plumber  
License No. 064717PM  
Refrigerant Certified No. CFR089400285



- In-floor heating • Oil furnaces
- Pressure systems • Gas furnaces
- Electric heat pumps

FREE ESTIMATES  
COMPLETE SALES  
AND SERVICE

218-253-4347

## The Head-Quarters Hair and Tanning Salon

HAIRSTYLING  
FOR MEN AND  
WOMEN

PARK PLACE MALL  
RED LAKE FALLS, MINNESOTA  
**218 253-4223**

## Security STATE BANK



- Operating loans
  - Vehicle loans
  - Farm real estate loans
  - Consumer loans
- "We appreciate your business."

218-796-5157  
Fax 218-796-5158

anthony.holthusen@ssboklee.com



"THE FARMERS' HELPING HAND"

## Dave Miller Agency

DAVE MILLER, AGENT  
RURAL ROUTE 1  
VIKING, MINNESOTA 56760



- All-Risk Crop Insurance
- Crop/Hail Coverage

218-523-5861

## VOLTS AND JOLTS FEATURE OF THE MONTH

# Passion plus knowledge equals purpose

Community Church International in Thief River Falls celebrates 30 years

By Heather Blodgett

Community Church International, a name fitting to the church's involvement on a global scale, has recently celebrated 30 years as a parish.

The church was started when Reverend Curtis Jacobson, also known as Jake, felt the call to move to Thief River Falls and found a non-denominational church.

He was newly ordained and living in Detroit Lakes at the time with his wife, Sandra. The couple sold their home and belongings and moved to Thief River Falls. They were joined in the venture by Jim and Mary Jacobson, a married couple comprised of Jake's brother and Sandra's sister. A worship leader, Colleen Estes, was also instrumental in getting started.

Together they founded the church and purchased land east of the city along Minnesota Highway 1. A church was built and in October of 1983 the first service was held. It was important for the group that the theology be non-denominational. "We shouldn't let doctrine separate us, because we are all Christians," explained Sandra.

A core group of parishioners soon developed. "That really supported the church," Sandra said of those early years. A men's breakfast prayer group was one of the first programs the church added and it has been going strong for over 30

years.

In 1987, a Bible school was implemented for adults to further their education religiously. The program lasted until 2007 and saw 170 students in that time.

As the program was given credentials by the Minnesota School of Theology, students were required to complete a mission trip, in addition to their studies, and could get a diploma or degree for their efforts. Some were even ordained through the program, as Sandra was.

By 1995 they outgrew their original structure and built a new sanctuary, offices and an entryway. The original sanctuary was then used for a child care center.

The center serves a dual purpose, both utilizing the facility during downtime as well as fulfilling a need for child care providers in the community. "It's one of the greatest outreaches for the city," Sandra revealed, "so the children can have a quality, safe program with loving teachers and staff and parents can feel good having their kids here. It's awesome and I am so happy it's still going."

Later a gym and commercial kitchen were added to serve the needs of the church and the child care center. Currently, services have been moved to the gym to accommodate the growing congregation as both



Community Church International, which is known for its global outreach services, is located one mile east of Thief River Falls on Minnesota Highway 1.

sanctuaries are needed for the center. "As the congregation's needs change, the church evolves and grows with that," stated Sandra. "That's church life here."

Music is a large part of that life at Community Church International. Guitars, drums, bass, bongos, piano and vocalists are commonly present at worship services.

While Sunday morning services can be described as contemporary, Wednesday evening worship is a lively, celebratory service. Both services start with music for families and the congregation to enjoy together

while worshipping. After the music portion children may attend a school setting on Sunday mornings and a fun activity-based program on Wednesday evenings, while the rest of the parish continues in a worship service.

A weekly Sunday evening prayer service is held with music and prayer, with less structure, in a format Sandra refers to as "soaking". "It's a welcoming atmosphere where you can just be here, pray and soak it up," she said as people are invited to pray silently or aloud and appreciate the music.

As the church now boasts eight pastors, many who were ordained through the church's Bible school, several worship teams, comprised of both pastors and parishioners, lead the services.

Jake sees the church as a training ground for people to go into the world and serve God. "Every child should be taught the gospel and experience church worship," said Sandra. "Every child deserves that and every person deserves that."

Jake bases his philosophy on what is known as the great commission, which is derived from the Bible's book of Matthew; "And Jesus came and spake unto them, saying, all power is given unto me in Heaven and in Earth. Go ye therefore, and teach all nations, baptizing them in the name of the Father, and of the Son, and of the Holy Ghost, teaching them to observe all things whatsoever I have commanded you, and lo, I am with you always, even unto the end of the world." Matthew 28:

18-20.

"If a person feels a passion, they need to be trained, because passion plus knowledge equals purpose," explained Sandra.

Community Church International puts that idea into action through conferences and missions. Each year they hold two conferences, the annual conference and women's conference, where they invite Christians from the area to converge at their church. An international conference was also held in 2006 to unite the nations, at which five countries were represented.

Countless mission trips have been facilitated through the church over the years. Their first mission trip was to a Native American community in northern Ontario, where they still have mission presence today. Forty thousand dollars was raised and volunteers were gathered to build an orphanage to house over 200 children during a mission trip to Mexico. A mission station was later built in Zapata, Texas, for a base to do further ministry work in Mexico.

Missionaries traveled to China, smuggling several hundred Bibles into the country, which are considered contraband there. Youth rallies were held in Panama and a youth conference was held in Spain. A trip to Mozambique served an orphanage and while in Nicaragua, missionaries handed out Christian materials door to door and held church services at night.

The church has also partnered with Father's Heart, an organization that gives motorcycles to pastors to use in their

ministries in rural, international locales, such as Uganda, Kenya, Sudan and Mozambique. Additional missions have taken members of the church to Thailand, Japan, Nepal, Korea and Singapore.

The church celebrated its 30th anniversary last October with a weekend of activities. A Bible school reunion was held where many previous students returned to report on missions and service they have completed since graduation. Several speakers from Minnesota, Panama, Canada, Nicaragua and across Africa were hosted throughout the weekend.

Friday night celebrations had an emphasis on impacting youth and included a youth Christian band. Saturday night saw a meeting to set goals for the philosophy of the church in the future. The celebration culminated Sunday in a celebration fellowship dinner. "I have absolutely loved being a part of the church community in Thief River Falls," raved Sandra. "Both my husband and I love it here and we plan to be here for another 30."

Community Church International holds services and children's ministry programs at 10 a.m. Sunday mornings and 6:30 p.m. Wednesday evenings, as well as a prayer service at 6 o'clock on Sunday evenings.

A youth group for teenagers is offered Sunday evenings at 7 o'clock while a men's breakfast and prayer group meets Saturday mornings at 8 a.m. and a women's Bible study meets Fridays at 10 a.m.



Mary Jacobson, one of the five founders of Community Church International, worked with a few of the children who attend the church's child care center, which is one of the many outreach services the church provides to community members.

## Bray-Gentilly Mutual Insurance Co.

Locally Owned and Operated  
Serving Policyholders Since 1900

218-683-3200

2017 Hwy. 59 SE • P.O. Box 592  
Thief River Falls, MN 56701

INSURANCE FOR  
FARMS, HOMES  
AND PERSONAL  
PROPERTY

TELEPHONE US FOR AN  
AGENT NEAR YOU!

Email:  
tbodyrft  
@hotmail.com



**1BODY**  
**HEALTH & FITNESS**

Park Place Mall,  
Red Lake Falls  
**253-2111**

**Fitness Center  
Hours:  
5 a.m.-Midnight Daily**

www.1bodyhealthandfitness.com

## Kilen's Custom Cleaners

Commercial  
Residential  
Custodial



Specializing in  
Water, Fire & Soot  
Restoration

Jordan Kilen - Owner

(218) 686-2591

www.kilencustom.com

Free Estimates

"Achieving excellence one  
customer at a time"

## Want to cut your heating cost by up to 50%?

Buy a YORK Affinity  
heat pump today!



## GROVE MECHANICAL, INC.

Your hometown heating &  
air conditioning team!  
Serving Crookston and the surrounding  
communities for 30 years.  
**(218) 281-3863**

OFFICE PHONE

**253-2168**

OUTAGE PHONE

**253-2200**

**1-800-245-6068**



Red Lake Electric  
Cooperative, Inc.

One of the Minnesota Power Systems



# Marshall County implements CodeRED notification system

## Join CodeRED

CodeRED is an automated notification system Marshall County can use to call up to 60,000 phone numbers per hour with a recorded message.

CodeRED can reach individuals by residential phone, business phone or cell phone. It will make three attempts to contact citizens and will leave messages in voicemail boxes and on answering machines. Emergency personnel can send a message to the entire county or to a selected area.

## Sign up today

The only way to be sure your information is entered into the CodeRED system is to sign up for the notifications. To include

your information in the CodeRED system, visit the Marshall County web site <http://www.co.marshall.mn.us/>.

Once you have reached the web site click on the CodeRED symbol to start your registration. You will be asked to provide your phone number and home or business address so that notifications made only to selected neighborhoods will be accurate. Your information will only be used for CodeRED notification purposes.

## What is CodeRED used for?

CodeRED alerts are issued for a variety of situations, including natural disasters, terrorism threats, gas leaks, water

contamination, chemical spills, missing child alerts, severe weather such as tornadoes and flash flooding, and for general community notifications.

**By signing up for CodeRED you may choose to receive notifications for any of the following:**

- Emergencies
- Severe weather
- General notifications

If you have questions or comments about the CodeRED system contact Marshall County Emergency Management at 218-745-5841 or the Marshall County Sheriff's Office at 218-745-5411.

# Employees receive safe worker awards



Each year employees of Red Lake Electric Cooperative, who surpass five year increments of accident-free work, are presented with safe worker awards at the Cooperative's annual meeting. Recipients this year included, from left, Melanie LaCrosse, Brett Knott and Steve Kruse each with five years and Mike Raymond with 25 years.

# Planning ahead is key for college and retirement

*By Doreen Friel*

When it comes to saving money, most parents have three objectives: putting something aside for a rainy day, making sure they cover their retirement needs and taking care of their kids' college education.

Achieving all three can be a challenge, so it makes sense to set some priorities.

First, look at your overall ability to save, knowing that the amount you can set aside may change as your income and family circumstances change. Then, decide how much to devote to your retirement.

Most financial planning experts agree that saving and investing for retirement should take priority over saving for your kids' college education. Why? Because parents who can take care of themselves financially in retirement can better avoid becoming burdens to their children, whose own financial responsibilities are likely to be growing. Remember, loans, grants and scholarships are available to pay for college, but not for retirement.

This doesn't mean you shouldn't create a college fund for the kids. It simply means you should take care of your financial needs first.

## Help is available.

As you try to strike the right balance between retirement and college savings, you may find it helpful to work with a financial planning professional. Check out the website of the Financial Planning Association [www.fpanet.org](http://www.fpanet.org) where you can get

information on finding a financial planner in your area, what to expect from a consultation and how to maximize the benefits of such a consultation.

Next, examine the available savings vehicles, such as 529 College Savings Plans, Coverdell Education Accounts, and Uniform Gifts to Minors Act (UGMA) and Uniform Transfers to Minors Act (UTMA) accounts. Traditional and Roth IRAs, as well as regular, taxable accounts may be options for saving, depending on your needs.

Throughout this process, engage your kids. They should know what you are hoping to contribute to their college education and what you are expecting of them.

Finally, don't fall into a funk if you can't pay the college bills in full. There are lots of sources of college funding (1318002.02, Ann Borg) out there, including grants and scholarships as well as low-interest and tax-advantaged loans. The next section will give you a head start on finding ways to finance your kids' higher education.

## Leave no stone unturned when seeking college aid.

If you're the parent of an aspiring college student and need financial assistance, rest assured, there's money out there. Some of it's free. Your challenge will be to find it.

On average, U.S. undergraduates are now receiving more than \$10,000 per year in financial aid.

## Things to do to get started:

Involve your kids. They know their own interests, accomplishments and capabilities. They should also be active players in the search for scholarships and other assistance. And, just like working to save money for college, researching aid prospects can be a satisfying accomplishment for your children.

Examine opportunities online. Explore the following websites. Each is rich with background information and links that can jump-start your search:

[studentaid.ed.gov](http://studentaid.ed.gov)  
[finaid.org](http://finaid.org)  
[collegeaid.com](http://collegeaid.com)  
[collegescholarships.org](http://collegescholarships.org)

Look around the corner. Local businesses, foundations, community organizations, advocacy groups, high school administrators, college financial aid offices and government agencies are all potential sources of assistance. Be careful of services offering to find grants/scholarships for a fee. By digging and thinking creatively, you and your kids just might find college funds you never knew were out there.

*Doreen Friel is a marketing communications consultant who produces employee benefits-related materials for the Employee Benefits Communications department of the National Rural Electric Cooperative Association, the Arlington, Va.-based service arm of the nation's 900-plus consumer-owned, not-for-profit electric cooperatives.*

# April is Distracted Driving Awareness Month

**Myth:** My car came with an infotainment system. Since it's built into my car it must be safe.

**Fact:** Advancements in automotive technology can be broadly separated into two categories:

-Technologies related to vehicle performance and driving, such as vehicle-to-vehicle (V2V) communication, crash avoidance systems, adaptive headlights and stability control systems.

-Technologies unrelated to vehicle performance or the task of driving, such as hands-free phoning, speech-to-speech text and the ability to use social media while driving.

There are many safety benefits to technologies related to vehicle performance and driving. Technology also can be a solution to the distracted driving problem with features such as call blocking. But not all technology is created equal. Anything that distracts a driver from performing an essential driving task can be dangerous

and doesn't belong on a dashboard infotainment system.

**Myth:** I have an infotainment system in my dashboard, so it's safe for me to speak my texts and drive.

**Fact:** Despite auto makers equipping vehicles with dashboard infotainment systems at an increasing rate, these systems can bring some drivers distractions. In fact, voice text features have been found by research to be even more distracting than typing. Why? Even if drivers don't need to use their hands to type texts and emails, voice-to-text features require drivers to look at the translated messages to be sure they are correct.

Drivers also are mentally distracted because they're focused on talking and fixing the message errors. Slower reaction times occur no matter whether drivers are typing a text or using voice-to-text technology.

**Myth:** Most car crashes are caused by car malfunctions such as faulty brakes, blown tires or engine problems.

**Fact:** Vehicle problems represent a very small portion of crashes. Most vehicle problems have to do with improperly inflated or maintained tires. As much as 90 percent of all crashes are caused by driver error and can be prevented.

Cell phone (2614001.14, Kristie Anderson) use behind the wheel can lead to driver error, and it's a very prevalent behavior on our roads today; nine percent of drivers at any given daylight moments are talking on phones while driving.

Drivers using cell phones are four times as likely to be in a crash, in part because their ability to respond to hazards is significantly affected. Drivers talking on cell phones can miss seeing up to 50 percent of the roadway environment, including traffic signs, pedestrians and cyclists. All of these risk factors could be lessened if drivers would hang up their phones and simply drive.

# Organ donations save lives

## Learn the facts during National Donate Life Month

*By B. Denise Hawkins*

April is National Donate Life Month and those responsible for increasing the level of organ and tissue donation in the U.S. are renewing the call for donors who can help save the lives of people in need of transplants.

The most pressing need in organ donation remains the shortage of donors. The Organ Procurement and Transplantation Network, which maintains the nation's transplant waiting list, reported that in the first nine months of 2013 there were 121,076 candidates waiting to receive new organs. New names are added every 10 minutes, and about 18 people a day die while waiting.

**The gift of life, now and later:** Most organ and tissue donations come from deceased donors—one person can save up to eight lives. But as the

need for organs grows, more people are becoming living donors.

The U.S. Department of Health and Human Services reports that about 6,000 living donations are made annually; the most frequent procedure is a single kidney transplant. Other common living donations include a lung, or a part of the lung, pancreas, and intestines.

Of those on the nation's waiting list for kidneys, more than one-third are African American, according to the National Kidney Foundation. African Americans suffer disproportionately from high blood pressure, diabetes, and certain genetic diseases, which puts them at high risk for kidney disease.

**The process of becoming a donor:** Place your name in the Minnesota organ donor registry.

Designate your decision to donate on your driver's license.

Share your decision to be a donor with your family, physician, religious leader and friends. When you die, a family member must indicate that it was your desire to donate your organs.

Include organ donation in your advance directives, will and living will.

*Sources: U.S. Department of Health and Human Services, [OrganDonor.gov](http://OrganDonor.gov) and [Organ Procurement and Transplantation Network](http://OrganProcurementandTransplantationNetwork)*

# LOOK UP POWER LINES MAY BE OVERHEAD

## Turn your junk into cash!

[www.luckentrucks.com](http://www.luckentrucks.com)

State certified scale  
get paid what you deserve

Car Crushing & Tin Bailing  
Lugger & Container Services

We buy anything from cars to combines, including the kitchen sink and everything in between...

We want your scrap!

You call. We haul.  
Call 1-800-874-4107  
\$\$\$ Cash \$\$\$ Cash \$\$\$ Cash \$\$\$

**Lucken Corp.**

23125 430th St. SE, Winger, MN 56592  
[jeff@luckentrucks.com](mailto:jeff@luckentrucks.com) or [john.lucken@luckentrucks.com](mailto:john.lucken@luckentrucks.com)

- Prepared Steel
- Unprepared Steel
- Unstripped Motors
- Tin
- Car Bodies
- Batteries
- Brass
- Alum. Trans.
- Radiators
- Die Cast
- Stainless Steel
- Aluminum
- Copper
- Lead

# After-Hours Outage Phone 218-253-2200

## Informational Web Sites

The following is a list of Web sites that can provide information and education in reference to electrical safety and energy conservation. These Web sites are listed as links on Red Lake Electric Cooperative's Web site at [www.redlakeelectric.com](http://www.redlakeelectric.com).

- Electrical Safety Foundation International: [www.esfi.org](http://www.esfi.org)
- Alliance to Save Energy: [www.ase.org](http://www.ase.org)
- US Environmental Protection Agency: [www.epa.gov/greenhomes](http://www.epa.gov/greenhomes)
- Energy Star: [www.energystar.gov](http://www.energystar.gov)
- Minnesota Safety Council: [www.minnesotasafetycouncil.org](http://www.minnesotasafetycouncil.org)
- Safe Electricity: [www.safeelectricity.org](http://www.safeelectricity.org)
- Lighting Controls Association: [www.aboutlightingcontrols.org](http://www.aboutlightingcontrols.org)
- US Consumer Product Safety Commission: [www.cpsc.gov](http://www.cpsc.gov)



There's no such thing as a NO risk zone . . .

No one is risk free when it comes to the #1 cause of property damage from natural disasters - flood. Keep everything you value Safe. Sound. Secure.® from a flood with Auto-Owners Insurance!

Call or visit us today!

**Red Lake County Insurance**  
Red Lake Falls, MN

218-253-2177 • [rlci@gvtel.com](mailto:rlci@gvtel.com)  
[www.redlakecountyinsurance.com](http://www.redlakecountyinsurance.com)

*Auto-Owners Insurance*





Gordy Henrikson, right, visited with Roger Johanneck, general manager of Red Lake Electric Cooperative, at the 76th annual meeting held March 26.



Jean Beyer, of Red Lake Falls, longtime loyal member of Red Lake Electric Cooperative, was recognized and awarded a gift at the Cooperative's 76th annual meeting.



Dennis Kainz, right, of Goodridge, visited with Red Lake Electric Cooperative's lineman Branden Narlock at the Cooperative's annual meeting which was held March 26 at the Ralph Englestad Arena in TRF.



Ron and Ordella Haugen of Goodridge looked over the items that were presented to them as attendees of Red Lake Electric Cooperative's annual meeting. The meeting was held on March 26 at the Ralph Englestad Arena in TRF.



Steve Kruse, Red Lake Electric lineman, served lunch to Red Lake Falls area residents from left, Pete Stich and Gary and Terry Weiss, at the Cooperative's annual meeting held March 26.



Attendees of Red Lake Electric Cooperative's annual meeting were treated to donuts and beverages as they entered the Imperial Room at the Ralph Englestad Arena in Thief River Falls.



Lucille Myers, Thief River Falls, was one of many door prize winners at the Red Lake Electric Cooperative's 76th annual meeting. Approximately 250 members and guests attended the meeting.



Red Lake Electric Cooperative's annual meeting is a time for neighbors and friends to socialize. Pictured on left are Linus and Cathy Desrosier, who visited with Ted Schindler and Marie Chaput, all of Red Lake Falls.



Red Lake Electric Cooperative annual meeting attendees had the opportunity to sign up with Cooperative Action Network (ACTION.COOP). In doing so, they are asking the EPA to use a common sense solution that balances energy needs and environmental concerns. Pictured are, from left, Walter Novak of Brooks, John Stich and Paulette Hanson of RLF.



Members of Oak Park Lutheran Church, rural Oklee, enjoyed their lunch after providing and preparing the meal for Red Lake Electric Cooperative's annual meeting attendees. Many positive comments were received regarding the pork chop meal they prepared.



Ollie Urdahl, standing, of Viking visited with other meeting attendees at Red Lake Electric Cooperative's 76th annual meeting, which was held March 26 in TRF.

*continued from pg. 1*

Luther Kvern, Vice-President of Generation, Minnkota Power Cooperative, Grand Forks, ND was the guest speaker. Kvern gave an in depth look at the connection from generation, to transmission and then distribution to the members home or business. He explained the energy sources that makes up Minnkota's generation mix and discussed the investments made by Minnkota and how those costs have changed from 2008 to 2012. Kvern stated that Minnkota invested \$425 million in plant upgrades, the majority of which were to meet stricter EPA regulations. He spoke about the impact and output of renewable energy sources and how load has grown on the Minnkota system, and what projections are for future load growth.

Kvern updated the audience on the Center to Grand Forks transmission line project and the challenges building the line posed to Minnkota. He also spoke about Minnkota's challenge to manage security risks, both physical plant security and

cyber security.

Kvern touched on load control (load vs. resources) during Minnkota's recent winter peaks and explained why load control occurs. He then closed out his presentation by stating Minnkota's mission which is to keep our electricity the best energy value in the region.

Three incumbent directors were re-elected to the board of directors. They include: Bonnie Christians, Crookston, District 1; Steve Linder, Oklee, District 4; Mark Hanson, Thief River Falls, District 5. They will each serve three year terms.

Each year employees are recognized when surpassing five-

year increments of accident free work. Safety awards were presented to: Melanie LaCrosse, five years; Brett Knott, five years; Steve Kruse, five years; Mike Raymond, 25 years. The Cooperative has gone 5 1/2 years without a lost time accident.

Philip Zimpel, representing the Plummer Volunteer Fire Department, accepted an Operation Round Up grant in the amount of \$1,800 from Red Lake Electric Trust board member Bonnie Christians. Zimpel thanked the Cooperative members who participate in Operation Round Up and thanked Red Lake Electric Trust for the donation.

Long-term cooperative member, Jean Beyer of Red Lake Falls was recognized and presented a gift. Several door prizes were awarded. A delicious pork chop lunch was prepared by members of Oak Park Lutheran Church rural Oklee. Musical entertainment was provided by Vern Rogalla of Goodridge.

Red Lake Electric is headquartered in Red Lake Falls, MN and as a distribution electric cooperative serves rural members of Marshall, Pennington, Red Lake, Polk, Clearwater and Beltrami counties.



Phil Zimpel, fire chief of Plummer Volunteer Fire Department, accepted an Operation RoundUp donation from Bonnie Christians, ex-officio director of Red Lake Electric Trust. The money will be used to purchase personal protection equipment for firefighters.

## Another Great Choice for Good Health



Carly Haas, PA-C is available for patients of all ages at RiverView Clinic-Red Lake Falls.

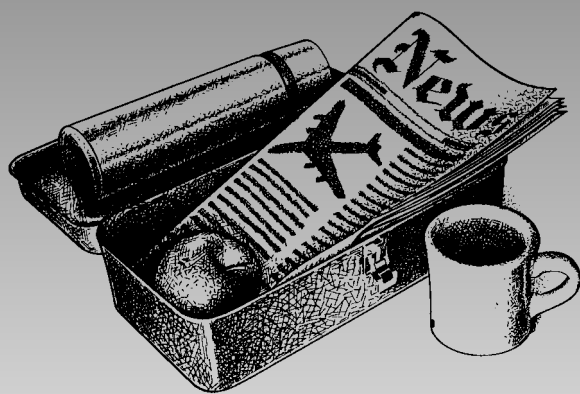
For appointments, call 218.253.4606.



**RIVERVIEW HEALTH**  
Exceptional People. Exceptional Care.

Park Place Mall, Red Lake Falls





# Your key to buy, sell or trade anything is the CLASSIFIEDS

**The members are invited to use this FREE WANT AD service.**

If you have anything to trade or sell, just drop a card to Red Lake Electric Cooperative, Box 430, Red Lake Falls, MN 56750.

## Real Estate

www.sollie.net • www.sollie.net

### EXCELLENT BUY!



#3941  
Let the fun begin! It doesn't matter if you roll or sled in, if you're looking for a good time, you win! The owners are not only offering this well established business at an unbelievable price, but they are also including all equipment for turn-key opportunity! Let the dream of running your own bar and grill bring you in, let the price make it a reality! Call today for complete details.

**\$125,000**

**Sollie Realty, Inc.**  
Fosston, MN • (218) 435-1525  
www.sollie.net

www.sollie.net • www.sollie.net

## DON'S

307 First Street East • TRF  
Across from Pennington Square  
**SEWING & VACUUMS**  
Sales & Service • NEW & USED  
Small Appliance Repair

New Warranty and Service Center  
for Heat Surge Heaters  
Serving the area since 1992  
681-8664

## Late Model Auto Parts

-National Parts Locator-

Toll Free 1-888-560-5321  
Bus: 218-964-5321

**WE BUY PARTS CARS!**

20 Bakers St., St. Hilaire, MN  
Jeff Brouse & Brian Bugge, Owners

**B & B Auto Recycling, Inc.**

## For Sale

**For Sale:** 500 gallon propane tanks. Tanks are in good shape - a few might need painting. No rust. Call 218-684-5306

**Wanted:** Auto hauler type trailer. 16' to 20'. Call 218-689-1388 to leave message.

**For Sale:** 3 x 3 x 8 medium square bales of grass or alfalfa hay. Stored inside, no dust. Horse or beef qualities available. Call 218-681-1720

## GOPHER STATE



### ONE CALL

Call before digging!  
It's the law!

**1-800-252-1166**

## LUMBER

**AND  
Building Supplies**



**ASK ABOUT  
OUR COMPLETE  
BUILDING PLANS  
SERVICES!**  
We're glad to help you  
with any building problem  
you may have.

**Oklee  
Lumber, Inc.  
(218) 796-5131**

## KM Transmission And Repair

Quality • Experience  
Dependability • Honesty



### Fair Prices

*It's all just that simple. Keith Moen*

Mon. - Fri. 8:00 am to 5:00 pm  
Sat. by appointment

**(218) 681-4250**

616 Davis Ave. N, Thief River Falls

## DON'S MACHINE SHOP

ASE CERTIFIED REBUILDERS  
ALL GAS AND DIESEL ENGINES

•Automotive •Industrial  
•Marine •Agricultural  
•High Performance  
•Vintage Auto  
•Heavy Duty Diesel  
CALL FOR ESTIMATE!  
INSTALLATION AVAILABLE

FOSSSTON, MN

**218-435-6379 or  
1-800-448-1518**

PRICE  
EXAMPLES:  
•GM 350  
\$1,315 - \$1,419  
•GM 6.5 Diesel  
with new block  
\$5,330  
•Ford 7.3  
Diesel  
Powerstroke  
\$4,200  
All prices are with  
exchange on a  
rebuildable core.

## 14<sup>th</sup> Anniversary Sale!

April 21<sup>st</sup> - May 3<sup>rd</sup>

Over 18 rolls of vinyl & 50 rolls of carpet in-stock!

All In-Stock Flooring On Sale!

**Carpet  
ETC.**

Mon-Fri 8 a.m. - 5:30 p.m.  
Sat. 9 a.m. - 5 p.m.  
Anytime by appointment  
(218)964-5555  
of St. Hilaire

## HELP! HELP! HELP!

"My basement is wet! Who do I call?"



And for all your cleaning needs call 218-681-7679

We Buy Cars and Car Bodies	We Sell Welding Supplies	Roll-Off Boxes Available
We Buy Aluminum Cans	We Sell New Steel - Structural and Sheet	We Buy Scrap Iron and Metals

**Evans Scrap & Steel, Inc.**  
218-681-3488 • Toll Free 1-800-906-3488  
13203 190th St. N.E. • Thief River Falls, MN  
Winter Hours:  
7:30 - 4:30  
Monday-Friday

## Wright's EVERYTHING CONSIGNMENT

*Reduced Prices  
Not Reduced Quality*



**Check our weekly sales!!**

**111 MAIN AVE, DOWNTOWN RED LAKE FALLS**

Open Monday through Saturday  
10 a.m. - 7 p.m.  
Sunday 11 a.m. - 5 p.m.  
**253-2091**

## SCHAFER ELECTRIC

**BRIAN SCHAFER**  
218-289-5430  
CELLULAR

**MIKE SCHAFER**  
218-289-5431  
CELLULAR

16483 120th Avenue SW  
Red Lake Falls, Minnesota 56750  
Office 218-253-2497

COMMERCIAL TRENCHING RESIDENTIAL FARM



## Midwest Roofing

Residential and Commercial

Licensed • Bonded • Insured  
FREE ESTIMATES

20061 Center St E (218) 681-3879  
Thief River Falls, MN 56701 (218) 686-4475



702 Dawn Ave.  
Thief River Falls, MN 56701  
218-681-8221 • 1-800-950-9917

Email: sales@trsalvage.com • Website: www.trsalvage.com

**NEW AND USED FARM EQUIPMENT PARTS**

Electrical Contractor Shop: (218) 253-4123  
Home: (218) 253-4127

## KEN'S ELECTRIC, INC.

Red Lake Falls, Minnesota 56750  
"We Service Our Work"

Contact Us For All Your Electrical Needs!

Allen Remick - Cell: (218) 689-0313  
Jason Knott - Cell: (218) 289-5104



ENJOY IMPROVED HEALTH AND COMFORT  
WITH AN APRILAIRE WHOLE-HOME AIR CLEANER

**An Aprilaire whole-home  
air cleaner is the answer.**

- Provide total comfort
- Control dust
- Protect your family's health
- Protect your home

**Aprilaire**  
Feel Good. Inside.™

**Call us today for a healthier,  
more comfortable home.**



**BILL H. MOSER**  
MASTER PLUMBER  
PM058011

**BILL J. MOSER**  
MASTER PLUMBER  
CFR 089400285  
PM061208

**JASON JOHNSRUD**  
MASTER PLUMBER  
PM064717

## Want Ad Order Form

Use this handy form to submit your want ads.

**PLEASE PRINT.**

Mail or bring your ads to the RLEC office by the tenth of the month. Commercial ads are 10¢ per word with a minimum charge of \$4 per insertion.

\_\_\_\_\_  
\_\_\_\_\_  
\_\_\_\_\_  
\_\_\_\_\_  
\_\_\_\_\_  
\_\_\_\_\_

Member want ads are FREE. One want ad per member per month.

**Please PRINT . . .**

Your Name, Address and Phone Number. Mail with your power bill payment, if you prefer, or fax to 218-253-2630.

**AFTER-HOURS OUTAGE PHONE 218-253-2200**



## Using caution may prevent electrical accidents on the farm

Farming is perennially near the top of the list of the most dangerous jobs in the United States, according to Bureau of Labor Statistics.

One hazard faced by farm workers, while they are also feeling the pressure to get the crops in the ground, is electricity and the equipment that carries it to homes and businesses. However, with proper planning and education, risks of and accidents involving electricity can be greatly reduced.

Electrical Safety Instructor and Safe Electricity Advisory Board Member Jim Miles says, "There are steps farmers can take to help keep themselves and workers safe when working around electricity." Miles goes on to say, "One critical part of safety around electricity is awareness. With the use of large equipment, farmers can easily find themselves in dangerous proximity to overhead lines. Being aware of the location of those wires can help reduce accidents."

**Safe Electricity urges farmers and farm workers to remember:**

Keep a 10-foot minimum distance around power lines.

That means 10 feet above, below and to the side of power lines.

Use a spotter when moving machinery around the farm. It can be difficult to judge how close a piece of machinery is from the driver's seat.

Use caution when handling long items such as irrigation pipe, ladders and rods. Coming too close to a power line can cause electricity to arc, or "jump," to conducting material or objects.

Be aware of increased height when loading and transporting tractors on trailer beds. Many tractors are now equipped with radios and communications systems that have very tall antennas extending from the cab that could make contact with power lines.

Avoid raising the arms of planters, cultivators or truck beds near power lines.

Never attempt to raise or move a power line to clear a path.

Remember, even non-metallic materials such as lumber, tree limbs, tires, ropes and hay will conduct electricity depending on dampness, dust and dirt contamination.

Overhead electric wires are not the only source of electrical contact that can result in a serious incident. Pole guy wires, used to stabilize utility poles, are grounded.

However, when one of the guy wires is broken it can cause an electric current disruption. This can make those neutral wires anything but harmless. If you hit a guy wire and break it, call the utility to fix it. Do not do it yourself. When dealing with electrical poles and wires, always call the electric utility.

Miles advises, "If you do find yourself in a vehicle that has made contact with a power line, it is (613)002.04, Perry Duden) critical that you know what to do. If you don't know the proper procedures for getting out of the cab, you could be injured or killed by electricity."

Jim Flach's sprayer made contact with overhead power lines and it cost him his life. Take a few minutes to go to SafeElectricity.org, watch Jim's story and share it with everyone involved in your farming operation to help keep them safe.

Get more electrical safety information at SafeElectricity.org.



### Red Lake Electric Cooperative, Inc.

*One of the Minnkota Power Systems*

Phone	218-253-2168
Toll-free	1-800-245-6068
Fax	218-253-2630
After-hour outage	218-253-2200
Office hours	Monday-Friday, 8:00-4:30
E-mail:	redlake@minnkota.com
Web site	www.redlakeelectric.com

**Call Before You Dig - Gopher State One Call • 1-800-252-1166**

P. O. Box 430 • 412 International Drive SW • Red Lake Falls, MN 56750-0430

## AUTO PAY OFFERED BY RLEC

Red Lake Electric Cooperative is pleased to offer you Auto Pay. Now you can have your monthly energy bill paid automatically from your checking or savings account. You can receive the Auto Pay service by completing the Auto Pay sign-up sheet and returning it to Red Lake Electric Cooperative.

The Auto Pay service is free of charge. Not only is this service free, you will eliminate the expense of writing a check, postage to mail your payment and no more late payment penalties because your bill will be paid on time, every month, for you.

Your payment will be automatically made for you on the 5th of each month. If the 5th

falls on a weekend or holiday, the payment will be made on the next business day. You will continue to receive your monthly energy bill as you have in the past, indicating the amount that will be withdrawn from your bank account. The proof of your payment will appear on your bank statement and your next month's energy bill statement.

**Continue to pay your monthly bill until you are notified on your bill that the Auto Pay has been set up for you.**

If you have any questions about the Auto Pay please call RLEC at 800-245-6068 or 218-253-2168.

## AUTO PAY SIGN-UP SHEET

I authorize Red Lake Electric Cooperative (RLEC) and the bank listed below to initiate variable entries to my checking or savings account. This authorization remains in effect until I notify RLEC in writing to cancel it in such time as to allow RLEC to act on it.

RLEC ELECTRIC ACCOUNT #

NAME (PRINT)

ADDRESS

TELEPHONE #

NAME OF FINANCIAL INSTITUTION

CHECKING ACCOUNT #

SAVINGS ACCOUNT #

SIGN HERE TO AUTHORIZE

Please return this authorization form with a blank, voided check to:  
Red Lake Electric Cooperative, P.O. Box 430, Red Lake Falls, MN 56750

### The All-New 2014 FourTrax<sup>®</sup> Rancher<sup>®</sup>

AMERICA'S FAVORITE ATV. NOW BETTER THAN EVER.



BEST ON EARTH<sup>™</sup>



www.rvsports.com • 218-681-1007

1412 3rd St. W • Thief River Falls • FAX: (218) 681-8420 • 1-800-826-5403 Hours: Mon. - Fri. 9-5:30 • Sat. 9-1

powersports.honda.com UTILITY ATVs ARE RECOMMENDED ONLY FOR RIDERS 16 YEARS OF AGE AND OLDER. ATVs CAN BE HAZARDOUS TO OPERATE. FOR YOUR SAFETY, BE RESPONSIBLE. READ THE OWNER'S MANUAL. ALWAYS WEAR A HELMET, EYE PROTECTION AND PROTECTIVE CLOTHING. BE CAREFUL ON DIFFICULT TERRAIN. ALL ATV RIDERS SHOULD TAKE A TRAINING COURSE (FREE FOR NEW BUYERS. ASK YOUR DEALER OR CALL ASI AT 800-887-2887). NEVER RIDE UNDER THE INFLUENCE OF DRUGS OR ALCOHOL, ON PAVED SURFACES, ON PUBLIC ROADS, WITH PASSENGERS, OR AT EXCESSIVE SPEEDS. NO STUNT RIDING. RESPECT THE ENVIRONMENT WHEN RIDING. FourTrax<sup>®</sup>, Rancher<sup>®</sup> and Best On Earth<sup>™</sup> are registered trademarks of Honda Motor Co., Ltd. ©2013 American Honda Motor Co., Inc. D0913

# EXPRESS MEATS

Custom  
Butchering

**STEFAN KAYA**

**(218) 683-5211 • Cell (218) 791-6190**

**12605 ST. NE – Thief River Falls**

Take us out to the ball game...  
or anywhere else!

• eDeposit: Deposit checks from anywhere—all from your cell phone!

• Mobile Banking: download our Touch Banking app for quick access. App is available for iPhone and Droid.

• Text Banking: Will work with any phone that is capable of receiving text messages.

## MobileBanc

Always ready when you are



## Ultima Bank Minnesota

Winger • Fosston • Bemidji • Plummer

Member FDIC

**Auctioneer:**  
MIKE CHRISTIANS

WATCH FOR SIGNS

**THE AMISH COMMUNITY**

**Auctioneer:**  
BERNARD GREEN  
320-290-9079

WATCH FOR SIGNS

## QUILT AND CONSIGNMENT AUCTION

**LOCATED AT THE: DAVID MAST RESIDENCE**

From Clearbrook: 1 mi. So. on #92, then right (W) on Cty. Rd. #6 for 5½ mi. (right side of road).

From Gonvick: 5 mi. So. on Cty. Rd. #7, then right (W) on Cty. Rd. #6 for 1½ mi. (right side of road).

**SO ORDER**

9:00 – Misc.

9:15 – 2nd ring starting inside with jams, jellies, pickled beets, pickles & more, followed by crafts, quilts & new furniture

12:00 – Quilts start selling

3rd ring – Selling small animals, equipment, lawnmowers, used furniture, firewood, all larger items

**Saturday, May 3, 2014**

**9:00 am sharp**

Portable squeeze chute w/automatic head gate

Farmall Model A with PTO, excellent cond.

Pacific 7500 diesel generator, elec. start, brand new, still wrapped

42x72 quarter sawn dining room table w/4 self-storing leaves, white oak, 6 chairs

Hickory rocker  
Child's hickory rocker

**QUILTS**

(WE WILL NOT ACCEPT MACHINE QUILTED OR CHEATER'S CLOTH QUILTS)

The quilts consigned are hand-stitched and BEAUTIFUL! We are expecting 150 to 200 quilts by sale date.

Among the top quality quilts are:

- Log cabins in various colors
- Plain tops
- Trip Around The World
- Cross-stitch in various colors

**MANY TOP-OF-THE-LINE QUILTS**

*Moon glow quilt*

**NO JUNK ITEMS, PLEASE!**

**ROUND PEN**

Approx. 60' round pen, 8' ride through gate with steel horse sculptures above ride-through gate, 4' walk through gate, also feed bunk attached to one corral gate, deluxe, very nice

**MISCELLANEOUS**

- Heavy duty ratchet straps
- Water tanks
- III. 5 spd. heavy duty drill press, 1977 bench top version
- Brand new misc. 18v hand tools
- Misc. new doors
- R/R ties
- Pony cart
- 1977 bench top version
- Misc. new lumber
- Cattle panels

**HOUSEHOLD MISC.**

- Hickory vanity with top (like new)
- Jellies, jams, maple syrup
- Gas grill w/side burner

**LAWN AND GARDEN**

- Children's lawn chairs
- White lawnmower, runs good
- Assorted bird houses
- Lawn rakes

**SMALL ANIMALS**

Polish chickens ... 3 boxes of 3 birds per box; prettier than Guineas, real bug eaters and not as noisy

Baby goats

**HORSES AND EQUIPMENT**

- Harness hooks
- Halters
- Lots of horse wormer
- Leads
- Lead ropes
- Lots of horse tack

**NEW & USED TACK**

We will have the usual run of horse-related tack

- Halters and lead ropes
- Grooming sets
- Harness hooks
- Brooms, forks, shovels
- Neck yoke and 2 horse eveners (heavy duty)
- Lots of misc. used tack

**LARGE BAKE SALE**

LUNCH WILL BE SERVED by the AMISH LADIES

**Daniel Mast**  
44344 Cty. Rd. #7  
Clearbrook, MN 56634  
218-776-2084

**CALL FOR INFORMATION TO CONSIGN ITEMS OR QUESTIONS**

**Felty Bornreger**  
12575 490th St.  
Gonvick, MN 56644  
218-487-6045

**– NOT – RESPONSIBLE FOR ACCIDENTS –**