



# Volts and Jolts

Published monthly for the members of  
**RED LAKE ELECTRIC COOPERATIVE, Inc.**

*One of the Minnkota Power Systems*

**SERVING THE FOUR-COUNTY AREA OF MARSHALL, PENNINGTON, RED LAKE AND POLK**  
*and a portion of the lands of the Red Lake Band of Chippewa*

VOL. 50 – NO. 6

RED LAKE FALLS (RED LAKE COUNTY), MINNESOTA 56750

APRIL 2015

## RLEC 77th annual meeting "Building a Safety Culture"

The 77th annual meeting of Red Lake Electric Cooperative was held March 25 in the Imperial Room of the Ralph Engelstad Arena in Thief River Falls. The meeting was attended by approximately 200 Cooperative members and guests.

President Bonnie Christians called the meeting to order at 10:30 am. In her President's report, Christians noted that the Cooperative had a good year in many areas of its operations in 2014. Christians noted that the Cooperative continues to have challenges but that the Cooperative has always faced challenges. Christians stated that our challenge to provide the membership with safe, reliable and

affordable energy 24/7 is a big challenge. Christians noted that while rates have not changed since 2011, the Cooperative is well aware of how the cost of providing service has risen. Christians noted that when compared to the cost of many other goods and services we all rely on for our daily living; Electricity remains a good value and that not counting heat; the cost to power the average RLEC residential member is \$5-\$6 per day. Christians thanked the membership for their attendance today and then introduced a video titled "A Jewel on the Prairie" showcasing Minnkota's Young generation station.

Roger Johanneck, General

Manager, gave a report on the Cooperative's activities during the past year and focused his comments on how Red Lake Electric is meeting today's challenges; specifically the challenge of keeping energy safe, reliable and affordable. Johanneck stated that Minnkota has generation in place to meet the generation needs well into the future and that the newly completed Center to Grand Forks transmission line will add to the reliable delivery of energy into Minnkota's service territory. Johanneck noted that meeting the reliability challenge has changed in scope with the ever increasing regulatory requirements placed on physical plant and cyber security. Johanneck

said on the distribution side Red Lake Electric is meeting the reliability challenge in part by the systematic upgrades and maintenance done by the Cooperative; current work plan projects amount to over \$1.25 million per year. Meeting the reliability challenge also includes adequate staffing and trained employees. Johanneck noted employee retirements and hires that took place in 2014.

Johanneck explained how the good year enabled the Cooperative to issue a \$300,000 rebate on the members January energy bills in addition to retiring over a half-

**RLEC 77th...**

(continued on back page)



**Red Lake Electric Cooperative's annual meeting attendees totaled approximately 200. The cooperative's 77th annual meeting was held March 25 in the Imperial Room of the Ralph Engelstad Arena in Thief River Falls.**

*More annual meeting photos will appear in the May edition of Volts and Jolts.*



**Grace Harmoning, a fifth grader at J.A. Hughes Elementary School in Red Lake Falls, sang the National Anthem following the call to order at Red Lake Electric Cooperative's annual meeting March 25. Grace is the daughter of Kurt and Carmen Harmoning.**

### In this month's *Volts and Jolts*

#### Page 2

Manager's Comments

Lundeen serves 21 years as director

#### Page 3

Recipe Corner

From the Mail Bag

#### Page 4

Feature of the Month:  
*The Garden Shop*

#### Page 5

Plan ahead for safe planting season

#### Page 8

Kujava elected to  
Minnkota Board



**Bob Guillemette, right, was recognized for his years of service to the Cooperative by Roger Johanneck, general manager.**

## Guillemette retires from RLEC

After more than 41 years of employment at Red Lake Electric Cooperative, Bob Guillemette's career came to a close March 31.

Guillemette joined Red Lake Electric Feb. 1, 1974, as a part-time employee in the appliance department. Later that year he was hired full-time as a grounds man, and soon became an apprentice lineman.

Guillemette recalled that many other employees were hired during the same time to keep up with the cooperative's busy work schedule. Most who

worked in the line department at the time had no formal training, so they learned on the job.

"We worked under the old lineman who were all World War II veterans," Guillemette said. "They taught us line work and how to be safe."

There were plenty of outages during those years, but Guillemette recalled that members were fortunate enough to be located in an area not frequented by ice storms in the winter or tornadoes in the summer. When construction season slowed down, the cooperative's leaders had the foresight to inspect all poles and replace the bad ones. This helped produce the reliable, robust system the cooperative has today.

After working for almost a decade as a lineman, Guillemette was promoted to manager of operations in 1985, a position he held until retirement. In that role, he oversaw the line department and the power delivery projects throughout the service area.

"I didn't know all that I was in for but Harry Ford, who was

the line foreman at the time, told me, 'You better buy a big bottle of aspirin cause you're gonna have a lot of headaches,'" Guillemette recalled.

While Guillemette admitted there were a lot of challenges and changes during his career, he appreciated the effort of his fellow co-workers and their ability to go beyond the call of duty.

"It seems that when things were at their worst, everyone pitched in to accomplish what needed to be done," Guillemette said. "Having worked at several other jobs before coming to the co-op, I always felt that we had the highest quality people who were dedicated to the job."

During his more than four decades of service, Guillemette visited with countless members during times when the lights were on and when outages swept across the region. He said he appreciated the members for their support throughout the years.

**Guillemette retires...**  
(continued on page 2)



**Stacy Blawat**



**Robert Finstad**



**Aaron Chervestad**

## Three directors elected at annual meeting for three-year terms

**Stacy Blawat**, Thief River Falls, will be re-elected as the District 2 Director. This will be her second three-year term following a special one-year term.

Blawat and her husband Bernard reside on their farm east of Holt. Their children include Mitchell Martin and his wife, Kendra. Mitchell is starting his own trucking company and Kendra works at Digi-Key. Anthony Martin works as service technician at RV Sports and Rachel, a fifth grader at Challenger Elementary School in Thief River Falls, is learning how to play the violin.

The Blawats are members of St. Bernard's Catholic Church. Stacy is a stay-at-home mother, serving the role as a homemaker.

"I appreciate the quality of the employees and their hard work," commented Blawat. "It's easy for us to take electricity for granted but there are a lot of people working behind the scenes to keep our electricity safe, reliable and affordable."

**Robert Finstad**, Thief River Falls, will be re-elected

as the District 8 Director. He has represented the members of the district since 1999.

Finstad and his wife Stephanie have two children, Dylan and Jerzie, and another one on the way. They reside on the family farm in Rocksbury Township of Pennington County. They are members of United Methodist Church in Thief River Falls. Finstad is self-employed in the construction business, does some grain farming, and own R&S Rentals in Thief River Falls.

"I am proud and feel greatly honored to be able to serve as director for District 8," said Finstad.

**Aaron Chervestad**, Oklee, is the newly-elected director for District 7. He replaced Kelly Lundeen, Trail, who did not seek re-election having served 21 years.

Aaron has been a life-long resident of Deer Park Township, rural Oklee, and currently resides on a farm with his wife Jill and their children, Owen and Alexa. Jill is employed as a paralegal at Ihle & Sparby, P.A. in Thief River Falls. Owen and Alexa attend

Red Lake County Central Elementary School in Plummer, where Owen is in the second grade and Alexa is in kindergarten.

Aaron graduated from Oklee High School and the University of Minnesota Crookston with a Bachelor of Science degree in Ag Business. Aaron has been actively involved in production agriculture his entire life. He is currently in a farming partnership with his father, Korydon. Together they produce corn, wheat, beans, hay and raise beef cattle.

The Chervestads are active members of Oak Park Lutheran Church, rural Oklee. Aaron has held many board positions at Oak Park Lutheran and is currently chairman of the congregation.

"I've always wanted to give back to my community and district," stated Chervestad. "Serving as a board member of RLEC will allow me to do that. I also want to make sure clean, reliable electricity will be available for many generations to come."



**Steve Conely**

## Conely promoted to Manager of Operations

Steve Conely, engineering technician at Red Lake Electric Cooperative, has been promoted to manager of operations. Conely will assume the responsibilities of Bob Guillemette, who recently retired.

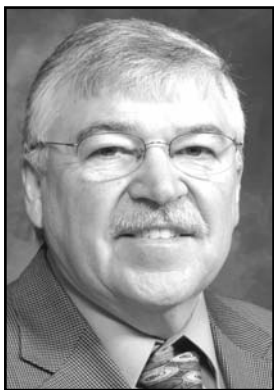
Conely began his employment with the Cooperative in June of 2001, since he has worked within the line department.

Steve's main responsibilities at the Cooperative include supervisor and staffing of the line operation crew, electric system design and maintenance, creating work orders, dispatching, outage management, reviewing Gopher State One Call locate tickets, programming meters and AMRs (automatic meter reading), regulator and OCR control

programming and support, keeping the RLEC service territory maps up-to-date.

Conely has also been the purchaser for inventory and equipment at the Cooperative. Most recently, he has worked with the Cooperatives new staking program, importing and implementing data.





# Manager's Comments

by Roger Johanneck



## Annual Meeting

The 77th Annual Meeting of your cooperative is now history and I want to thank those of you that were able to join us for this event. From my perspective, I thought the meeting went well. If I could change one thing it would have been the weather conditions, and consequently, the slippery roads that greeted all of us that morning. I understand why those of you that planned to attend but didn't due to the slick and snow covered roads.

We heard a number of compliments from the membership about this year's annual meeting. Attendees appreciated the pace of the meeting, and the fact that the business duties and all presentations were completed in an hour's time. New to the meeting this year was the use of golf carts to shuttle meeting goers between the parking lot and the Ralph Engelstad Arena; the carts were especially handy this year because of the snow. We'll plan to have shuttle service on hand for future meetings as well.

I want to add a special thanks to Vernon Rogalla who provided musical entertainment, to 10-year-old Grace Harmoning who sang the National Anthem, to Randy Versdahl who did the invocation, to Lidia Jacobson for her informative presentation on safety and to the Black River Lutheran Church of rural Red Lake Falls who provided a delicious meat ball dinner. Our meetings would not be the same if our invitations to the folks I just mentioned are not accepted and I sincerely appreciate them doing so.

As always, we like hearing from our members; if you have a comment on this year's annual meeting or an idea for future membership meetings, please tell us.

**The good with the bad:**  
By comparison, the recent

winter was a mild one here in our neck of the woods; a welcome relief from what we experienced just a year ago. The lack of snow and cold was good for our line crews getting work done around our service area. Our crews were able to continue with construction projects, do pole replacements and other work that often times comes to a halt with a normal cold winter and snow-cover. Clearing brush with our skid steer/brushing attachment also continued for a good share of the winter because there was little snow to get in the way.

The drawback to the light snow this winter and lack of rain this spring is seen in the dry ground conditions that we have. While good for continued line work activity and planting crops, the dry grass, coupled with high wind has created a high risk of fires. Every year in the spring and fall, fire lays claim to a pole or poles on our electric system. With some added precaution, it doesn't have to be that way.

For those that find the need to burn when the burning ban is lifted; I ask that you defuse the risk to our poles by clearing the tall grass an adequate distance around the pole before you start your burn. Mowing the grass short or sprinkling enough salt to kill the grass around the pole are a couple of simple ways to remove some of the risk to poles when burning. Poles and repairs aren't cheap; please use caution and care when you burn.

**Bob Guillemette retires:**  
I want to add my sincere thanks to our long-time employee Bob Guillemette on his recent retirement from Red Lake Electric Cooperative. Bob was already working for the Cooperative when I arrived in

1980 so not having him at the office working as our Manager of Operations will take some getting used to. Forty-one years of service is quite an accomplishment when you consider the changes Bob has witnessed and worked through.

Bob's work brought him in direct contact with many of the members and those associations meant a great deal to him. In addition to meeting well with the members, Bob's ability to meet the challenges of an ever changing industry is a credit to him. Keeping current with technology and the times enabled Bob to remain a productive and valuable employee of the Cooperative and for that I am grateful.

Congratulations Bob and thanks again for a job well done.

### Kelly Lundeen retirement:

Kelly Lundeen chose to not seek re-election to the board of directors, ending 21 years of service as director from District 7. I sincerely appreciate the work Kelly has done serving on the board; five years as Vice-President, four years as President and eight years serving as Red Lake Electric's delegate to the Minnkota Power board.

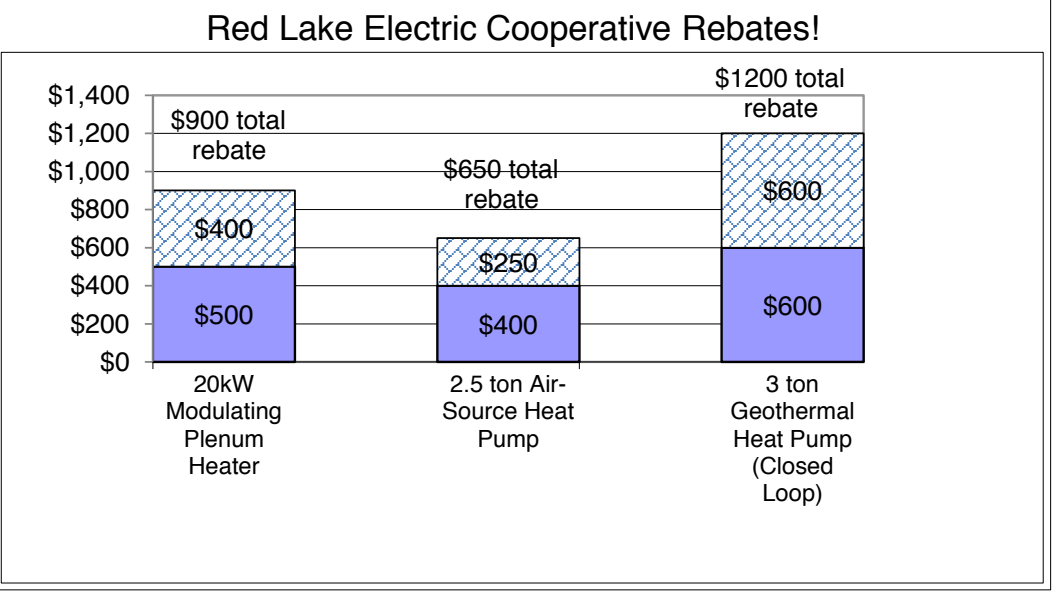
Kelly did an exemplary job serving the membership, not only from his district 7, but all of the membership. That Kelly was elected seven times to serve from his district speaks highly of the District 7 members regard for and trust in Kelly Lundeen. We will not only miss his presence, leadership and voice in the board room, but his friendship as well.

Our best to you Kelly and thanks again for your service to RLEC.

## QUICK TAKES

A look at some statistics from your Red Lake Electric Cooperative

Red Lake Electric Cooperative promotes the use of electric heat by offering rebates to customers who install new equipment that are qualifying products. PowerSavers HVAC rebates are based per unit with the exception of the ground source heat pump rebate which is based per ton. Red Lake Electric's Off-Peak incentive will receive \$20 per kW on electric heating equipment, \$100 per ton on air-source heat pumps and \$200 per ton on ground source heat pumps. Call us today at 1-800-245-6068 or 218-253-2168 if you have any questions on how to qualify for rebates



## Lundeen serves 21 years as director

Kelly Lundeen of Trail was recognized at Red Lake Electric Cooperative's annual meeting for having served 21 years as board director. The 21 years spanned from March of 1994 to March of 2015.

Lundeen represented District 7 of the Cooperative's service territory (5234003.01, Richard Culkins) which includes the townships of Goodridge, Reiner, Kratka, Highland, Star, Wyandotte, Mayfield and Deerpark. Lundeen also served as director on the Minnkota Power Cooperative board for eight years, from March of 2007 to March of 2015. He was presented a plaque in appreciation of his years of service by Cooperative.

"I have enjoyed working with the employees at Red



Kelly Lundeen

Lake Electric and Minnkota over the years," commented Lundeen. "It has been a very rewarding experience to represent Red Lake Electric Cooperative."

## Guillemette retires from RLEC,

(continued from page 1)

"I found the members of Red Lake Electric to be kind, caring, gracious and willing to work with us to try to make our system the best it can be," Guillemette said. (2103001.12, Jennifer Erickson)

Guillemette's family includes his wife, Vicki; daughter Bobbi (Jason) Aakhus and granddaughters Natalie and Allison of Red Lake Falls; daughter Melissa (Mark) Peterson, grandson Ethan and granddaughter Mykala of Red Lake Falls; and son Nathan, who is attending the University of North Dakota in Grand Forks.

During retirement, Guillemette will have more time for his hobbies, which include hunting, fishing, camping, golfing, hockey and traveling. He is a member of Bethany Lutheran Church in Red Lake Falls and an original Red Lake Falls pool committee member and coordinator. In that role he helped get the Red Lake Falls outdoor pool built.

When reflecting on retirement, Guillemette said he will miss the people at Red Lake Electric and the members the most.

"I miss working with the other employees who have retired over the years and I will miss the ones that are here now," Guillemette said. "And last, but not least, I will miss meeting with and working with the members of the coop."

## GOPHER STATE ONE CALL

Call before digging! It's the law!

1-800-252-1166

## Mission Statement

It is the mission of Red Lake Electric Cooperative to enhance the quality of life for people of our service area by consistently providing quality electric service and other valued services while holding our employees, our community and our environment in high regard.



Red Lake Electric Cooperative, Inc.

One of the Minnkota Power Systems

RED LAKE ELECTRIC COOPERATIVE, Inc.

## VOLTS & JOLTS

(USPS 663-400)

Published monthly by the Red Lake Electric Cooperative, Inc., 412 International Drive SW, Red Lake Falls, Minnesota 56750-0430, in the interest of its members and others. Periodical Postage Paid at the U. S. Post Office in Red Lake Falls, Minnesota 56750. POSTMASTER, SEND ADDRESS CHANGES to Volts & Jolts, c/o Red Lake Electric Cooperative, Inc., P. O. Box 430, Red Lake Falls, Minnesota 56750-0430. E-mail: redlake@minnkota.com

### OFFICERS AND DIRECTORS

PRESIDENT.....Bonnie Christians  
VICE PRESIDENT.....Robert Finstad  
SECRETARY-TREASURER.....Mark Hanson  
DIRECTORS.....Kelly Lundeen,  
Steven Linder, Peter Mosbeck,  
Colette Kujava, Randy Versdahl,  
Stacy Blawat

Subscription Rate \$2.50 per year

After-hours  
outage phone  
218-253-2200

## NOTICE

Hidden within the text of the articles of this issue of the Volts & Jolts are the names and account numbers of some RLEC members. They will appear within the articles in parenthesis as such (9999999.99 Roger P. Member). If you find your name and account number, clip it out and send it with your next payment. You will be credited with \$5 on your electric bill.



Red Lake Electric Cooperative, Inc.

One of the Minnkota Power Systems

## Things you should know about your electric service

### BILLINGS AND COLLECTION

You will receive your energy bill on or near the 10th of each month. Payment of your monthly energy bill is due on the 10th of the month. You may pay your bill in person at RLEC during office hours, use the 24-hour drive-up drop box located next to the RLEC office, by Auto Pay, by mail or by Bill4U on www.redlakeelectric.com.

Payment must be in our office or in the mail as evidenced by the postmark on or by the 25th day of the month to avoid a late payment charge. A 1 1/2% monthly late payment charge will be computed on delinquent energy bills; the minimum late payment charge will be \$1.00.

If your payment is not received by the end of the month a notice of disconnection statement will be included in the message area on your following energy bill. The disconnection statement will give a final notice of when your electric service will be disconnected if the delinquent amount remains unpaid. If an employee is sent to disconnect your electric service a \$60 collection fee will be charged to your account, even if you pay the collector.

To have a disconnected service reconnected, all amounts owing including the \$60 reconnection fee and a security deposit must be paid. If the service must be reconnected after normal working hours a \$120 reconnection fee must be paid.

### BAD CHECKS

A \$15 charge will be levied each time a check is returned because of nonsufficient funds, account being closed or payment stopped along with any applicable bank charges.

### OUTAGES

In case your electricity goes out, please do the following:

1. Check your fuses or breakers at the yard pole or meter pedestal.
2. Call your neighbor to see if they are out of electricity also.
3. Call the RLEC office (218-253-2168 or 1-800-245-6068) during working hours or 218-253-2200 after hours.

### METER TESTS

RLEC has a schedule in place to have its meters periodically tested for accuracy. Results from these tests show that meters generally slow down with age; however, if you think that your meter is recording too much usage, RLEC will test it for accuracy. You must pay a test fee in advance of the test. If the meter test shows that the meter was inaccurate, the test fee will be refunded to you.

### STOPPED METERS

If you find your meter has stopped and you are using electricity, please contact the office immediately so we can replace it. Average consumption will be billed to the member for the time the meter was stopped so there is no advantage in not reporting a stopped meter.

### METER READINGS

An automated meter reading system is utilized to obtain monthly meter readings. Although the system is normally reliable, that is always a chance that the correct reading has not been transmitted to the office for billing. Customers should periodically read their meter and compare it to the reading on the billing statement. If the actual reading is not close to the billing statement reading, please call the office. Keep in mind that the reading on your bill is from the end of the month.

### GENERAL SERVICE RATES

Facilities charge variable \$27 to \$35 month  
April-December.....9.5¢ Kwh  
January-March.....9.9¢ Kwh  
Long term off peak.....5.5¢  
Short term off peak.....7.5¢  
Off-peak equipment charge, \$5.50/month per heat meter.  
Multiphase users add \$22/month cost of service charge.  
Standby, \$12/month (meter disconnected but the power line remains; standby is not available on services larger than 15 KVA transformer capacity).  
Security light: LED, \$8/month; High pressure sodium, \$8/month; mercury vapor, \$9/month; water heater flat credit, \$7/month (January-April billing).





Red Lake Electric Cooperative employees offered a shuttle service by golf cart for attendees during their 77th annual meeting held March 25 in Thief River Falls.

## From the Mail Bag

**Dear RLEC Trust,**  
Your generosity has not gone unnoticed. We are very grateful for your support.  
**Sincerely,**  
**The Golden Link**

**Dear RLEC,**  
Thank you for the shop light and kitchen knife that we won at the district meeting.  
**Gary & Anita Halvorson Trail**

**Dear RLEC,**  
Thank you so much for the Skil palm sander that I won at the annual meeting.  
**Bonnie Camp (Town?)**

**Dear RLEC,**  
Thank you for the Dremel 100 rotary tool I was fortunate to win at the annual meeting in Thief River Falls. I will put it to good use.  
**Wayne Johnson (Town?)**

**Dear RLEC,**  
Thank you for the Skil jig saw that I won at the annual meeting.  
**Robert Helgeland Thief River Falls**

**Dear RLEC,**  
We want to thank you for the donation of 1/2 pints of milk to the dining center.  
The gift was greatly appreciated!  
**Sincerely,**  
**Gail Healy**  
**LSS Dining Site Manager, Red Lake Falls**

**Dear RLEC,**  
Your thoughtfulness means more than words can say. The donation will help our local cancer patients with travel expenses.  
**Red Lake County American Cancer Society**

**Dear RLEC,**  
On behalf of the Red Lake Falls Volunteer Ambulance Association we want to thank you for choosing us to receive some of the grant money. We are very excited to receive the new CPR training equipment.  
**Sincerely,**  
**Tandra Landman Treasure, RLFVAA**

**Dear RLEC,**  
On behalf of the staff and clients of the Inter County Nursing Service I would like to

thank you for the Operation Round Up grant we received. This is a great help to the clients that we serve in receiving home care.  
Once again thank you for the grant.  
**Anita B. Cardinal PHN Director**

**Dear RLEC,**  
You are a blessing to the mission carried out by Violence Intervention Project! Thank you for being a big part of what we do. Your recent contribution of \$500 to violence Intervention Project is deeply appreciated! Your gift works hard to help victims of domestic violence and sexual assault.

**Sincerely,**  
**Sandra Bentley Executive Director**

**Dear RLEC,**  
On behalf of the Thief River Falls and Pennington County Safety Camp Committee, I would like to thank you for the continued financial support that you give to our Safety Camp through your Operation Round-up program.  
Your generosity will continue to be used towards safety education for 120 second and third graders in June of 2015. It will be possible to once again conduct this camp to teach children the importance of safety that could one day save their lives.

**Sincerely,**  
**Melissa Sletten Recreation/Events Coordinator**

**Dear RLEC,**  
The Goodridge Senior Citizen members and the Goodridge community would like to thank the Red Lake Electric members who voluntarily round up their electric bill payment each month. A special thank you to the Board of Directors of the Red Lake Trust for selecting the Goodridge Senior Citizen Center as a recipient of a \$500 check to be used for building improvements.  
Only in N.W. Minnesota would you find 94 percent of the members donating to Operation Round-up, allowing organizations to make improvements to better their communities.

**Sincerely,**  
**Gordy Henrickson Senior Center Member**

## Recipe Corner



### Cinnamon Roll Dessert Pizza

**Dough Ingredients:**  
1-1/2 C. warm water  
2 Tbsp. sugar  
1 Tbsp. yeast  
3-1/2 C. flour  
1 tsp. salt  
**Buttery Cinnamon Sugar Spread:**  
1/2 C. butter, softened  
1/2 C. brown sugar  
1/2 C. old fashioned oats  
3 Tbsp. cinnamon  
**Cream Cheese Glaze:**  
4 Tbsp. unsalted butter  
2 oz. cream cheese (at room temp)  
3/4 C. powdered sugar  
1/2 tsp. vanilla extract

Preheat oven to 400°. Spray a 12 in. pizza sheet lightly with cooking spray. Set aside.  
Mix warm water, sugar and yeast together. Let that sit for 5 min.

Add flour and salt to the water, sugar, and yeast. Mix this until smooth and let it raise for 10 min. I used my kitchenaid mixer with the dough hook and it was so easy and worked great!

Roll the dough into a 12 in. circle and place on top of pizza pan. If you want the dough to be thinner, divide it in half and use the other half for pizza. Once it is in the pizza pan let it rest for 10 min.

To make the spread: In a small bowl combine butter, brown sugar, oats, and cinnamon. Spread thinly on top of the pizza crust. Sprinkle with additional brown sugar if desired. Bake for 12-15 min. or until the edges are light brown.

6. To make the glaze: Beat together butter and cream cheese. Add powdered sugar and vanilla until combined. If it is thick, put it in the microwave to soften it up. Drizzle on top of the pizza.

### Brown Sugar Glazed Garlic Pork Chops

4-5 boneless, pork chops  
1/4 C. light brown sugar  
1/2 tsp. garlic powder  
1/2 tsp. paprika  
1/2 tsp. salt  
1/2 tsp. black pepper  
2 Tbsp. Extra Virgin Olive Oil

In a small bowl, combine brown sugar, garlic powder, paprika, salt and pepper.  
Rub your sugar/spice mix on both sides of each pork chop, using all of the spice mix.  
Heat olive oil in a skillet over medium/high heat.  
After the oil is hot, cook the pork chops for about 5 min. on each side until browned and cooked through.

### Spicy Slow Cooker Beef & Bell Pepper

2 lbs. beef chuck (thinly sliced)  
2 C. bell peppers, chopped to 1-in. squares  
1/2 medium onion, peeled and sliced  
1 C. broth or 1 C. water + 3 bullion cubes  
2 tsp. freeze dried garlic  
1/3 C. chopped parsley  
2 tsp. salt  
1 tsp. black pepper  
1 tsp. - 1 Tbsp Sriracha sauce

**To thicken:**  
1/2 C. water  
2 Tbsp corn starch

Place the meat on the bottom of the slow cooker. Top with sliced onion. For even better flavor, saute onion in skillet until golden brown, then add it to the slow cooker. Top with cut up bell pepper. Sprinkle with salt, pepper and garlic.

Mix the broth with Sriracha, or water, bullion cubes and

Sriracha. Pour over the peppers and beef.

(If using bullion cubes, add only 1 tsp. salt). Set on high heat for 3.5-4 hours.

Mix 1/2 cup water and 2 tablespoons corn starch. Add 1 cup of liquid from the meat and pepper mixture and cook on medium heat until boiling, then cook 2 min. past boil to remove the cornstarch flavor. Add this mixture back to the meat and bell peppers. Sprinkle with chopped parsley, stir and serve.

Serve hot over rice, noodles or mashed potatoes.

### Buttermilk-Blueberry Breakfast Cake

1/2 C. unsalted butter (room temp)  
2 tsp. lemon zest or more - zest from 1 large lemon  
7/8 C. + 1 Tbsp. sugar  
1 egg, room temperature  
1 tsp. vanilla  
2 C. flour (set aside 1/4 C. of this to toss with the blueberries)  
2 tsp. baking powder  
1 tsp. kosher salt  
2 C. fresh blueberries  
1/2 cup buttermilk

Preheat the oven to 350°F. Cream butter with lemon zest and 7/8 C. of the sugar until light and fluffy.

Add the egg and vanilla and beat until combined. Meanwhile, toss the blueberries with 1/4 C. of flour, then whisk together the remaining flour, baking powder and salt.

Add the flour mixture to the batter a little at a time, alternating with the buttermilk. Fold in the blueberries.

Grease a 9-inch square baking pan (or something similar) with butter or coat with non-stick spray. Spread batter into pan. Sprinkle batter with remaining tablespoon of sugar.

Bake for 35 to 45 min. Check with a toothpick for doneness. If necessary, return pan to oven for a couple of more min. (Note: Baking for as long as 10 min. more might be necessary.) Let cool at least 15 min. before serving.

### Salisbury Steak with Caramelized Onion Gravy

**Onion Gravy**  
2 large red onions, thinly sliced  
2 Tbsp. unsalted butter  
2 Tbsp. all-purpose flour  
3 C. low-sodium beef broth  
1/2 C. dry red wine (optional)  
1 Tbsp. tomato paste  
1 tsp. cider vinegar  
Salt and pepper  
**Meat Patties**  
1 lb lean ground beef  
1/2 C. cooked white rice  
1 egg yolk  
1 tsp. salt  
1/4 tsp. pepper  
1 clove minced garlic  
1 tsp. Worcestershire sauce  
3 Tbsp. chopped parsley  
1/2 tsp. dried thyme  
1 Tbsp. olive oil

To make gravy: Heat butter in a large saute pan. Add onions and cook over medium-high heat, until onions start to brown, stirring occasionally. When onions are slightly softened and turning a deep honey brown, add 1/4 cup broth. Reduce heat, cover and continue cooking, adding more broth as needed to prevent caramelized bits at the bottom of the pan from burning. It should take at least 25 to 30 min. to properly caramelize onions. Stir in flour and cook for about 2 min. Add wine and reduce by half. Stir in remaining beef broth and tomato paste. Stir in cider vinegar. Simmer for 10 minutes. Add salt and pepper to taste. Reduce heat to low and keep warm.

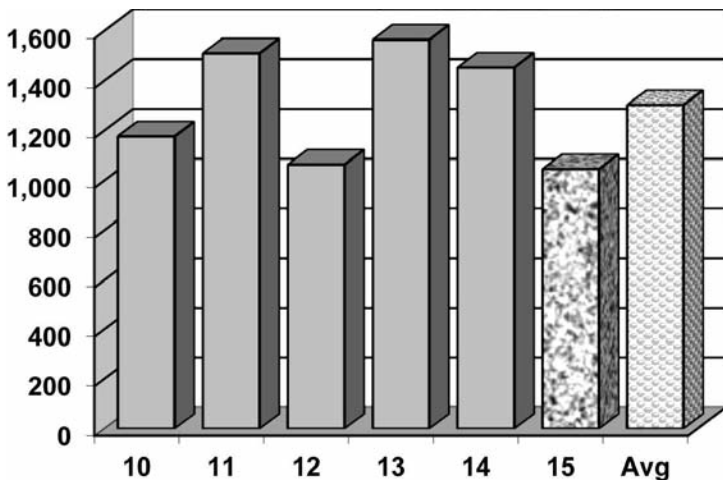
To make patties: Mix ground beef, rice, egg yolk, salt, pepper, garlic, Worcestershire sauce, parsley and thyme in a bowl. Shape into 4 oval patties about 3/4-in thick. Heat olive oil in a large nonstick skillet set over medium-high heat. Sear patties about 3 minutes per side, or until a brown crust forms. Pour gravy over patties and simmer for an additional 10 minutes. Serve warm with mashed potatoes or noodles.

**Yield:** 4 Servings

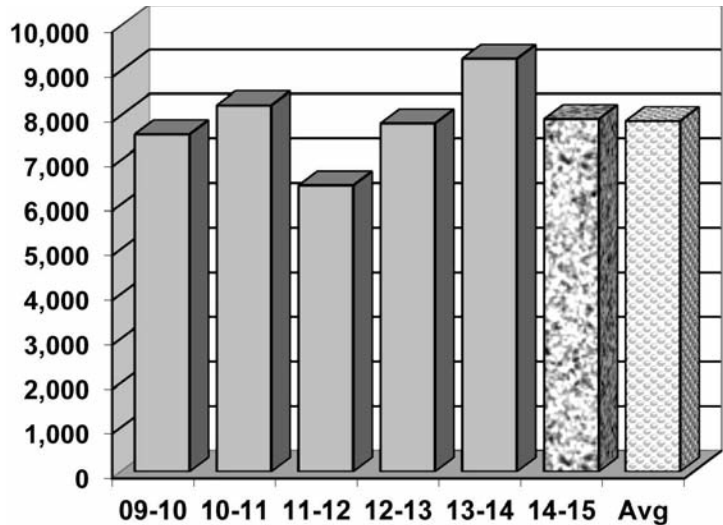
## DEGREE DAYS

To determine degree days, you must calculate the daily mean temperature for the time period you are measuring. Degree day computation is based on the assumption that a building does not require any heat if the outside temperature averages 65 degrees during a 24-hour period. To obtain a degree day figure, the high temperature and the low temperature for the day are added and the total divided by two. That figure is then subtracted from 65. For example, if the high temperature was 30 degrees and the low temperature 10 degrees, the figure would be 30+10=40; 40/2=20; 65-20=45. This would be a 45-degree day. The higher the degree day figure, the more heat required to warm your home.

### DEGREE DAYS March, 2015



### Year To Date September 1 to March 31



## EAGLE SQUARE

### Breakfast Special

### All Breakfast Sandwiches

**2 for \$3.99**

We now sell Hunting & Fishing Licenses

405 Bridge St NE, Red Lake Falls  
OPEN: Everyday 5:30 a.m. - 11:00 p.m.

**HOT STUFF Foods**  
**253-2995**

Red Lake Electric Cooperative, Inc.		
Operating Report		
MONTHLY COMPARISON		
	FEBRUARY 2014	FEBRUARY 2015
Total Revenue .....	\$1,690,497	\$ 1,483,596
Total Margins .....	\$ 413,433	\$ 192,412
Cost of Power .....	\$1,016,431	\$ 1,041,303
KWH's Purchased .....	\$16,498,206	\$15,836,515
Capital Credits Paid to Estates ..	\$ 8,887	\$ 0
Average outage time in minutes per member	12	0.5
YEAR TO DATE COMPARISON		
	FEBRUARY 2014	FEBRUARY 2015
Total Revenue .....	\$3,394,774	\$ 3,037,423
Total Margins .....	\$ 712,046	\$ 375,225
Cost of Power .....	\$2,094,998	\$ 2,109,668
KWH's Purchased .....	\$34,574,248	\$32,380,718
New Service Connections .....	1	1
Customers Served .....	5,284	5,319
Capital Credits Paid to Estates ..	\$ 13,236	\$ 6,878
Average outage time in minutes per member	12.0	1.5
Miles of Line Overhead .....	2,323	2,327
Underground .....	264	270



## Farmers Union Oil Company

Thief River Falls 218-681-3512



- Fertilizer
- Petroleum products
- Town and country deliveries
- Tires, batteries, accessories
- Farm supplies

## WILCOX PLUMBING AND HEATING, Inc.

RED LAKE FALLS

**Plumbing/Heating/Air conditioning**

BILL H. MOSER, Master Plumber  
License No. 1770PM

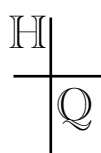
BILL J. MOSER, Master Plumber  
License No. 6039PM



- In-floor heating
- Oil furnaces
- Pressure systems
- Gas furnaces
- Electric heat pumps

FREE ESTIMATES  
COMPLETE SALES  
AND SERVICE

**218-253-4347**



## The Head-Quarters Hair and Tanning Salon

## HAIRSTYLING FOR MEN AND WOMEN

PARK PLACE MALL  
RED LAKE FALLS, MINNESOTA

**218 253-4223**



STATE BANK



- Operating loans
- Vehicle loans
- Farm real estate loans
- Consumer loans

"We appreciate your business."

**218-796-5157**

**Fax 218-796-5158**

anthony.holthusen@ssboklee.com



**Advertise  
here for just  
\$30/month!**

**Call  
218-253-2594  
to inquire**

## VOLTS AND JOLTS FEATURE OF THE MONTH

## The Garden Shop

*By Evelyn Glass*

With the beginning of spring weather our thoughts turn to the joys of gardening. We look forward to the delicious vegetables and fruits and to the beautiful flowers that provide beauty for our yards and homes. With those thoughts in mind, our visit this month is to The Garden Shop just north of Middle River.

Arriving for our visit we saw that we were too early for the winter wraps to have been removed from the perennial beds, strawberry beds and other growing things. Debbie and Morlyn Ornquist's gardening business to provide bedding plants for their customers was just receiving its first wake-up call for the first bursts of spring.

Living on the farm established by Morlyn's parents in 1939 Debbie and Morlyn (married in 1973) had a dairy farm for many years. Along with their dairy, about 10 years ago, they began a sideline business called The Garden Shop.

Debbie received her Master Gardener certification approximately 27 years ago. This fueled her interest in growing flowers and other garden produce. It was natural for her to bring to fruition her desire for a retail shop and greenhouse to share her "green thumb" with others. A year and half ago the former dairy barn burned and caused the death of some of their sheep and chickens. (The dairy cattle had been sold two years prior to the fire.) A round top greenhouse was built on the site of the former barn and the gardening business grew.

A small building which was the site of the original gift shop is now the potting shed off a small greenhouse area. Today, a larger building, with red siding and a cozy front porch, houses a gift shop where various items are displayed and ready for sale. Decorative bird houses, dishes with a chicken theme, flower pots and numerous other items are on the shelves for customers. It also has the refrigerator where fresh eggs from their flock of chickens are held ready for sale.

One greenhouse is used to grow cucumbers on trellises. Having the vines (7117001.02, Daniel Caillier) tied to the supports allows them to be pruned and picked without having to bend to the ground. An interesting feature for growing strawberries is a table covered in black plastic and filled with several inches of dirt. This also allows the weeding and harvesting of the berries to be done without crawling on the ground. Tomatoes are grown in another high tunnel greenhouse.

Debbie starts the bedding plants in trays and later transplants them into larger pots. One area has a germination room. In this room the trays are exposed to temperatures of 80 degrees which results in the seeds germinating quickly. Wave petunias, tomatoes, impatient, peppers, Walla Walla sweet onions and other bedding plants have their start in this room.

Some of the more ornamental plants are purchased from outside nurseries for resale.



The Garden Shop is located just north of Middle River along Highway 32. The gift shop is open April 1 through the Christmas season.

They will have a wide selection of perennials, lilies, hostas, daylilies and small shrubs available throughout the summer. In the coming weeks they will have spring onions, strawberry plants and asparagus roots for sale. A variety of garden seeds which have been purchased in bulk and packaged to be sold in smaller units are also sold in the shop.

The Ornquist farm is home to a small herd of Angus cattle, a flock of Suffolk/Polypay sheep, and also a flock of chickens. This time of the year a calf and several lambs have added to the numbers of their animals and birds. Watching over the livestock is Curly, a blue-heeler cross dog who loves to have you throw a tennis ball for him to retrieve.

Debbie and Morlyn have been an active part of their community. Debbie was in 4-H as a youth, and, as an adult, served as a 4-H leader for many years, including the years their daughter Jennifer was in the club. Debbie is in the midst of her second term as a member of the Marshall County Extension Board. She also served on the Northwest Minnesota Cluster Committee for the University of Minnesota Extension Service. Each week she writes a gardening column for local newspaper *The Honker*. Her column is frequently repeated in the *Stephen Messenger*.

Debbie depends on Morlyn to be her right-hand man and also hires local women when needed. Their granddaughter, Justice, who is a junior in high school, and 12-year-old twin grandsons, Michael and Glenn, are also happy to help Grandma wait on customers. Mom and Dad, Jennifer and

Chad Erickson, are often called upon to contribute time and energy to help with the business.

Plans call for Debbie to teach classes on how to make unique self-watering containers for large and small plants. These classes are currently schedule for Tuesday evenings, April 28 and May 19. She will also be selling produce at the Farmer's Market in Middle River on Friday afternoons from 1-5 p.m. during the months of June through September. During the summer (4717003.11, Coan Farms, c/o Lee Seyller) every Tuesday and Wednesday they offer fresh picked vegetables for sale on the farm.

The Garden Shop is open April 1 through the Christmas season. Handmade Christmas wreaths, various Christmas decorating items and decorated planters are in stock during the season. Beginning April 1 the shop will be open Sunday-Friday from 9 in the morning until 6 in the evening, with extended hours during the month of June.

When asked how Red Lake Electric has enhanced their lives she said, "In so many ways. It is convenient, provides our heat, powers the grow lights and is so reliable. Electricity makes our work easier and contributes to a better lifestyle and is essential to the business."

Our early spring visit to The Garden Shop created a desire to want to go back when the plants are more mature and the flowers will be blooming in the Ornquist's yard. Then the winter protection will have been removed and the plants will be displaying their mature beauty.



Deb has transplanted geraniums into larger pots. She explained they should show color within a couple weeks.



Several birdhouses are displayed inside the gift shop, along with baskets, and are ready for purchase.



Many varieties of tomatoes along with peppers are ready to be transplanted into large pots.



Within the gift shop is this cabinet which displays chicken themed dishes that are available for sale. Vegetable and flower seeds are also available for purchase.

## Bray-Gentilly Mutual Insurance Co.

Locally Owned and Operated  
Serving Policyholders Since 1900

**218-683-3200**

2017 Hwy. 59 SE • P.O. Box 592  
Thief River Falls, MN 56701

**INSURANCE FOR  
FARMS, HOMES  
AND PERSONAL  
PROPERTY**

TELEPHONE US FOR AN  
AGENT NEAR YOU!

**Advertise  
here for just  
\$30/month!**

**Call  
218-253-2594  
to inquire**

## Kilen's Custom Cleaners

- Commercial
- Residential
- Custodial



Specializing in  
Water, Fire & Soot Restoration

Jordan Kilen - Owner  
(218) 686-2591

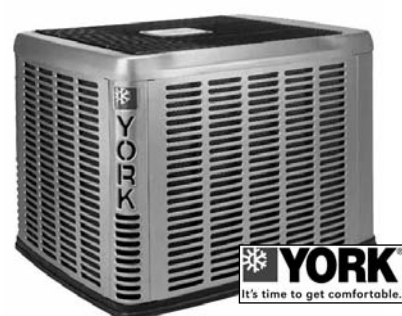
www.kilencustom.com

— Free Estimates —

"Achieving excellence  
one customer at a time"

## Want to cut your heating cost by up to 50%?

Buy a YORK Affinity  
heat pump today!



## GROVE MECHANICAL, INC.

Your hometown heating &  
air conditioning team!  
Serving Crookston and the surrounding  
communities for 30 years.  
**(218) 281-3863**

OFFICE PHONE  
**253-2168**

OUTAGE PHONE  
**253-2200**

**1-800-245-6068**



**Red Lake Electric  
Cooperative, Inc.**

One of the Minnesota Power Systems





Lighting – New Construction		
<i>(Unless noted, must be used for lighting with a minimum of 1,800 hours of operation per year)</i>		
T8 Fluorescent Systems – High Performance (CEE qualified)		
T8 4ft. High Performance		
1-lamp	\$3/fixture	Both ballasts and lamps must be from CEE-approved list and meet the CEE specifications for High Performance T8 Systems in order to qualify.
2-lamp	\$4/fixture	
3-lamp	\$6/fixture	
4-lamp	\$7/fixture	
T8 Fluorescent Systems – Reduced Wattage (CEE qualified)		
T8 4ft. Reduced Wattage 25W and 28W Systems		
1-lamp	\$3/fixture	Lamps and ballasts must meet the CEE specifications for High Performance T8 Systems.
2-lamp	\$4/fixture	
3-lamp	\$7/fixture	
4-lamp	\$9/fixture	
See “Commercial Lighting” at <a href="http://www.cce1.org">www.cce1.org</a> for approved lamp and ballast list. <b>However if the ballast has a NEMA premium label, it automatically qualifies.</b>		
T8 Fluorescent Fixtures – High-Bay		
High-Bay T8 Fixtures – 4ft. Lamps		
3-lamp	\$20/fixture	Install T8 fluorescent high-bay fixtures using recommendations from lighting professionals that use lighting design software to match the most efficient design to actual lighting needs.  Typically used instead of pulse-start metal halide fixtures.
4-lamp	\$25/fixture	
6-lamp	\$50/fixture	
8-lamp	\$70/fixture	
High-Bay Occupancy Sensor Control	<ul style="list-style-type: none"><li>• This is an additional incentive to add occupancy sensors to control the high-bay fluorescent fixtures listed above.</li><li>• Programmed start ballasts are highly recommended for controlled fixtures.</li></ul>	\$10 per controlled fixture
T5HO Fluorescent High-Bay Fixtures – New Construction		
<i>(Unless noted, must be used for lighting with a minimum of 1,800 hours of operation per year)</i>		
3-lamp	\$25/fixture	Consult with a lighting professional using their recommendations to install T5HO fluorescent high-bay fixtures.  Typically used instead of pulse-start metal halide fixtures.
4-lamp	\$50/fixture	
6-lamp	\$70/fixture	
<ul style="list-style-type: none"><li>• All fluorescent fixtures must utilize electronic ballasts and T8 or T5 lamps. Ballasts shall have a power factor greater than 90%.</li><li>• Harmonic distortion of ballasts shall not exceed 20%. For 8-foot fluorescent ballasts, the total harmonic distortion shall not exceed 30%.</li></ul>		
LED Lighting – New Construction		
<i>Must be ENERGY STAR® or DesignLights Consortium™ approved.</i>		
LED Screw-In Bulbs	\$4/bulb	In place of 40-60W incandescent. Must be ENERGY STAR approved.
LED Screw-In Bulbs	\$8/bulb	In place of 65W or greater incandescent. Must be ENERGY STAR approved.
LED Recessed Downlights <i>(Complete fixtures or replacements kits)</i>	\$8/unit	Must be ENERGY STAR approved.
LED Linear T8 Lamp Replacement	\$5/lamp	Must be DesignLights Consortium approved.
LED Linear Fluorescent – New Fixtures		
1-lamp equivalent	\$5/fixture	
2-lamp equivalent	\$10/fixture	
3-lamp equivalent	\$15/fixture	
4-lamp equivalent	\$20/fixture	
LED Case Lighting	\$25/door	Retrofit or new installations. Must be DesignLights Consortium approved.
LED Fixtures – HID Replacement	\$40/fixture	LED fixture Wattage of <40 Watts. Must be DesignLights Consortium™ approved. <b>If used as an outside fixture it must have a photocell.</b>
LED Fixtures – HID Replacement	\$80/fixture	LED fixture Wattage of >40 Watts. Must be DesignLights Consortium approved. <b>If used as an outside fixture it must have a photocell.</b>

# Another Great Choice for Good Health

Carly Haas, PA-C is available Monday-Friday for patients of all ages at RiverView Clinic-Red Lake Falls.

Same day appointments are available, call 218.253.4606.

## RIVERVIEW HEALTH

Exceptional People. Exceptional Care.

Park Place Mall, Red Lake Falls

## Plan ahead for safe planting season

Farming is perennially near the top of the list of the most dangerous jobs in the United States according to Bureau of Labor Statistics. One hazard faced by farm workers, while they are also feeling the pressure to get the crops in the ground, is electricity and the equipment that carries it to homes and businesses. However, (4426003.03, John C. Kotaska) with proper planning and education, risks of and accidents involving electricity can be greatly reduced.

Electrical Safety Instructor and Safe Electricity Advisory Board Member Jim Miles says, “There are steps farmers can take to help keep themselves and workers safe when working around electricity.” Miles goes on to say, “One critical part of safety around electricity is awareness. With the use of large equipment, farmers can easily find themselves in dangerous proximity to overhead lines. Being aware of the location of those wires can help reduce accidents.”

Safe Electricity urges farmers and farm workers to remember:

- Keep a 10-foot minimum distance around power lines.

That means 10 feet above, below, and to the side of power lines.

- Use a spotter when moving machinery around the farm. It can be difficult to judge how close a piece of machinery is from the driver’s seat.
- Use caution when handling long items such as irrigation pipe, ladders, and rods. Coming too close to a power line can cause electricity to arc, or “jump,” to conducting material or objects.
- Be aware of increased height when loading and transporting tractors on trailer beds. Many tractors are now equipped with radios and communications systems that have very tall antennas extending from the cab that could make contact with power lines.
- Avoid raising the arms of planters, cultivators, or truck beds near power lines.
- Never attempt to raise or move a power line to clear a path.
- Remember, even non-metallic materials such as lumber, tree limbs, tires, ropes, and hay will conduct electricity depending on dampness, dust, and dirt contamination.

Overhead electric wires are not the only source of electrical contact that can result in a serious incident. Pole guy wires, used to stabilize utility poles, are grounded. However, when one of the guy wires is broken it can cause an electric current disruption. This can make those neutral wires anything but harmless. If you hit a guy wire and break it, call the utility to fix it. Do not do it yourself. When dealing with electrical poles and wires, always call the electric utility.

Jim Miles says, “If you do find yourself in a vehicle that has made contact with a power line, it is critical that you know what to do. If you don’t know the proper procedures for getting out of the cab, you could be injured or killed by electricity.”

Jim Flach’s sprayer made contact with overhead power lines and it cost him his life. Take a few minutes to go to SafeElectricity.org, watch Jim’s story, and share it with everyone involved in your farming operation to help keep them safe.

Get more electrical safety information at [SafeElectricity.org](http://SafeElectricity.org)



## Help your child enjoy reading aloud: Tips for parents

Your children will learn reading skills in school, but often they come to associate reading with work, not fun. The best thing parents can do to encourage children to love books and reading is to read aloud to them. And don’t stop reading aloud to them once they have learned to read for themselves.

Read to your child every day-even if only for a few minutes. It is your time together.

Reading should be fun. You don’t have to finish a story if your child loses interest.

Let your child choose the book even if it means reading the same book over and over.

Invite your child to “read” to you from a familiar book that he has memorized from having heard it so often read to him.

Stop (3809003.01, Mike Beito) and ask about the illustrations or what your child thinks will happen next. The answers may amaze you.

Read from a variety of children’s books, including fairy tales, poetry, and nursery rhymes.

Follow your child’s interests in choosing the books. There are many great books on non-fiction subjects such as the ocean or dogs.

Join your local library!

Source: [healthychildren.org](http://healthychildren.org)

## Attention Farmers

If you plan to install, upgrade or remodel a grain dryer, irrigation system or other large load on your farm this spring or summer, you must make certain your electric service is sized to handle

the extra load.

Please call Red Lake Electric at 218-253-2168 or 1-800-245-6068 and we will help you determine what size service you need.

Much like the weather, your life could change at the drop of a hat. Make sure your loved ones are protected.

When you purchase a life insurance policy from Auto-Owners Insurance, you can rest easy knowing you’re protecting the ones you love. Talk to your local independent agent representing Auto-Owners Insurance about the life insurance options available.

**Call or visit us today!**  
**Red Lake County Insurance**  
Red Lake Falls, MN  
218-253-2177 • [rlci@gvtel.com](mailto:rlci@gvtel.com)  
[www.redlakecountyinsurance.com](http://www.redlakecountyinsurance.com)

# Carpet Etc of St. Hilaire

## 15th Anniversary Sale

April 13<sup>th</sup> - 25<sup>th</sup>

**In Stock Flooring**

Over 50 Rolls Carpet

Remnants up to **50% Off**

18 Rolls Vinyl

Laminate with Attached Pad **\$1<sup>99</sup>sq ft**

Dura Ceramic **\$3<sup>79</sup>sq ft**

All Congoleum Vinyl Ordered on Sale

310 Broadway Ave. N.  
St. Hilaire  
218-964-5555

9:00 A.M. - 5:30 P.M. Mon - Fri  
9:00 A.M. - 1:00 P.M. Sunday  
Anytime By Appointment


### Minnesota State Electrical Inspectors

Pennington and Marshall Counties:  
Scott Stenvik – 218-686-5406

Red Lake and Polk Counties:  
Brian Holmes – 218-686-1413

Any time you or an electrician does wiring or other electrical work at your home or farm, Minnesota state requires a state wiring inspector to conduct a proper inspection of the work. A rough-in inspection must be made before any wiring is covered. A final inspection is also required. Please visit [www.electricity.state.mn.us](http://www.electricity.state.mn.us) for more information. The inspectors can be reached weekday mornings between 7:00 a.m. and 8:30 a.m.



 <div> <div>Power</div> <div>SAVERS</div> <div>Working together to save energy</div> </div> <div> <div>BUSINESS</div> <div>Rebates</div> </div>		
<b>Lighting – Retrofit</b> <i>(Unless noted, must be used for lighting with a minimum of 1,800 hours of operation per year)</i>		
<b>Compact Fluorescent Fixtures and Lamps (CFL)</b>		
<b>ENERGY STAR® CFL Screw-In Lamps</b>	\$2/unit Must be ENERGY STAR approved.	Incentive per screw-in self-ballasted lamp.
<b>ENERGY STAR CFL Reflector Flood</b>	\$4/unit Must be ENERGY STAR approved.	
<b>T8 Fluorescent Lamps with Electronic Ballasts</b> <i>(Standard Non-CEE qualified)</i>		
<b>T8 4ft. Fixture</b> 1-lamp 2-lamp 3-lamp 4-lamp	\$5/fixture \$6/fixture \$11/fixture \$13/fixture	Replace incandescent or T12 systems with T8 systems. Replacement must result in energy savings to qualify.  Replacement fixtures or lamp and ballast retrofits are eligible.
<b>Lighting – Retrofit</b> <i>(Unless noted, must be used for lighting with a minimum of 1,800 hours of operation per year)</i>		
<b>T8 Fluorescent Lamps with Electronic Ballasts</b> <i>(Standard Non-CEE qualified)</i>		
<b>T8 8ft. Fixture</b> 1-lamp 2-lamp	\$7/fixture \$9/fixture	Retrofits of T12 8' 2-lamp fixtures with four T8 4' lamps placed end to end should be considered a T8 4' 4-lamp retrofit at \$13.
<b>T8 4ft. Lamps and Ballast with Reflectors</b> <i>(Permanent removal of existing ballasts and unused lamp sockets required)</i>		
<b>2-lamp</b> Replacing T12 4ft. 4-lamp	\$25/fixture	Replace or retrofit T12 systems with a T8 system using 4' lamps. New fixtures or retrofit kits must be used.  Design must meet maintained Illuminating Engineering Society (IES) recommended light levels for the area.
<b>2-lamp</b> Replacing T12 8ft. 2-lamp	\$18/fixture	
<b>3-lamp</b> Replacing T12 4ft. 4-lamp	\$18/fixture	
<b>T8 Fluorescent Lamps Only - Reduced Wattage</b> <i>(CEE qualified)</i>		
4ft. 28W or less 8ft. 54W or less	\$1/lamp	Replace existing 32W 4' or 59W 8' T8 lamps with low watt T8 lamps.
<b>T8 Fluorescent Systems - Reduced Wattage</b> <i>(CEE qualified)</i>		
<b>T8 4ft. Reduced Wattage System</b> 1-lamp 2-lamp 3-lamp 4-lamp	\$7/fixture \$9/fixture \$14/fixture \$18/fixture	Replace incandescent or T12 systems with 28 and 25 watt CEE qualified Reduced Wattage T8 Systems. Lamps and ballasts used must meet the CEE specifications for Reduced Wattage T8 Systems.
<i>Replacement fixtures or lamp and ballast retrofits are eligible.</i>		
<i>See "Commercial Lighting" at <a href="http://www.ccel.org">www.ccel.org</a> for approved lamp and ballast list. <b>However if the ballast has a NEMA premium label, it automatically qualifies.</b></i>		
<b>T8 Fluorescent Systems – High Performance</b> <i>(CEE qualified)</i>		
<b>T8 4ft. High Performance</b> 1-lamp 2-lamp 3-lamp 4-lamp	\$6/fixture \$7/fixture \$12/fixture \$14/fixture	Replace incandescent, T12 Systems, or specified standard T8 Systems with CEE qualified High Performance (super) T8 Systems.  Lamps and ballasts used must meet the CEE specifications for High Performance T8 Systems.  Replacement fixtures or lamp and ballast retrofits are eligible.
<b>T8 Fluorescent Systems – 4ft. High Performance</b> <i>(Replacing specific fixtures)</i>		
2-lamp	\$20/fixture	Replacing T12HO 8' one lamp fixture – one for one replacement only.
4-lamp	\$30/fixture	Replacing T12HO 8' two lamp fixtures – one for one replacement only.
<i>High Performance (super) T8 systems require manufacturer and model number for ballast and lamps used. Both ballast and lamp must be from CEE approved list to qualify. See approved list at <a href="http://www.ccel.org">www.ccel.org</a>, under "Commercial Lighting." <b>However if the ballast has a NEMA premium label, it automatically qualifies.</b></i>		
<b>T8 Fluorescent Fixtures – High Bay</b> <i>(Retrofit)</i> <i>One for one replacement only. Only when replacing specific wattage HID (metal halide, mercury vapor and high pressure sodium) or incandescent fixtures.</i>		
<b>T8 High-Bay Fixtures 4ft. Lamps</b>		
3-lamp	\$20/fixture	Replacing 150 Watt or larger
4-lamp	\$25/fixture	Replacing 250 Watt or larger
6-lamp	\$50/fixture	Replacing 400 Watt to 749 Watt
8-lamp	\$70/fixture	Replacing 750 Watt or larger
<b>High-Bay Occupancy Sensor Control</b>	<ul style="list-style-type: none"> <li>This is an additional incentive to add occupancy sensors to control the high-bay fluorescent fixtures listed above.</li> <li>Programmed start ballasts are highly recommended for controlled fixtures.</li> <li>High bay occupancy sensor incentives may not be combined with any other occupancy sensor incentive.</li> </ul>	\$10 per controlled fixture
<b>T5HO Fluorescent High-Bay Fixtures – Retrofit</b> <i>One for one replacement only. Only when replacing specific wattage HID (metal halide, mercury vapor and high pressure sodium) or incandescent fixtures.</i>		
2-lamp	\$20/fixture	Replacing 150 Watt to 249 Watt
3-lamp	\$25/fixture	Replacing 250 Watt or larger
4-lamp	\$50/fixture	Replacing 400 Watt to 749 Watt
6-lamp	\$40/fixture	Replacing 400 Watt to 749 Watt
6-lamp	\$70/fixture	Replacing 750 Watt or larger
<i>All fluorescent fixtures must use electronic ballasts and T8 or T5 lamps. Ballasts shall have a power factor greater than 90%. Harmonic distortion of ballasts shall not exceed 20%. For 8-foot fluorescent ballasts, the total harmonic distortion shall not exceed 30%.</i>		



# Red Lake Electric Cooperative, Inc.

*One of the Minnkota Power Systems*

Phone	218-253-2168	
Toll-free	1-800-245-6068	
Fax	218-253-2630	
After-hour outage	218-253-2200	
Office hours	Monday-Friday, 8:00-4:30	
E-mail:	redlake@minnkota.com	
Web site	www.redlakeelectric.com	

**Call Before You Dig - Gopher State One Call • 1-800-252-1166**

**P. O. Box 430 • 412 International Drive SW • Red Lake Falls, MN 56750-0430**

LED Lighting – Retrofit		
Must be ENERGY STAR® or DesignLights Consortium™ approved.		
LED Screw-In Bulbs	\$4/bulb	Replacing 40-60W incandescent. Must be ENERGY STAR approved.
LED Screw-In Bulbs	\$8/bulb	Replacing 65W or greater incandescent. Must be ENERGY STAR approved.
LED Recessed Downlights (Complete fixtures or replacements kits)	\$8/unit	Must be ENERGY STAR approved.
LED Linear T8 Lamp or Replacement	\$5/lamp	Must be DesignLights Consortium approved.
LED Linear Fluorescent Replacement or New Fixture		
1-lamp equivalent	\$5/fixture	
2-lamp equivalent	\$10/fixture	
3-lamp equivalent	\$15/fixture	
4-lamp equivalent	\$20/fixture	
LED Lighting – Retrofit		
Must be ENERGY STAR® or DesignLights Consortium™ approved.		
LED Fixtures – HID Replacement	\$40/fixture	LED fixture Wattage of <40 Watts. Must be DesignLights Consortium approved. <b>If used as an outside fixture it must have a photocell.</b>
LED Fixtures – HID Replacement	\$80/fixture	LED fixture Wattage of >40 Watts. Must be DesignLights Consortium approved. <b>If used as an outside fixture it must have a photocell.</b>
Other Efficient Lighting Technologies – Retrofit		
Occupancy Sensors Under 500 W	\$20/sensor (limit is \$2,000)	May be wall or ceiling mounted. Programmed start ballasts are recommended for fluorescent fixtures.
Occupancy Sensors Over 500 W	\$40/sensor (limit is \$2,000)	
Plug Load Occupancy Sensor Document Stations	\$25/sensor	Each sensor incented must control at least three copiers, printers or faxes in any combination.
Snack Misers	\$25/unit	
Vending/Cooling Misers	\$50/unit	
LED Exit Sign – New Fixture ≤ 8 Watts	\$12/unit	Replace or retrofit existing sign. LED Exit Signs shall use 8 Watts or less, including the battery charger when active. Must meet State Fire Marshall codes and be UL-rated.
LED Automobile Traffic Signal	\$25/lamp replaced	Traffic signals using LED lights must replace conventional signals.
LED Pedestrian Signal	\$22/sign	Pedestrian signals using LED lights must replace conventional signals.
LED Case Lighting	\$25/door	Replacing fluorescent



# THE 2015 PIONEER 500

## FUN HAS NO RESTRICTIONS.

Now on Display!



OPTIONAL ACCESSORIES SHOWN





**www.rvsports.com • 218-681-1007**  
 Hours: Mon. - Fri. 9-5:30 • Sat. 9-1

1412 3rd St. W • Thief River Falls, MN • FAX: (218) 681-8420 • 1-800-626-5403

**powersports.honda.com** PIONEER 500 IS RECOMMENDED FOR DRIVERS 16 YEARS OF AGE AND OLDER, WHO ARE TALL ENOUGH FOR THE SEAT BELT TO FIT PROPERLY AND REACH ALL CONTROLS. PASSENGER SHOULD ALSO BE TALL ENOUGH FOR THE SEAT BELT TO FIT PROPERLY AND BRACE THEMSELVES, IF NEEDED, BY PLACING BOTH FEET FIRMLY ON THE FLOOR WHILE FIRMLY GRASPING THE HAND HOLD. ALWAYS WEAR YOUR SEAT BELT, A HELMET, EYE PROTECTION AND CLOTHING APPROPRIATE TO THE DRIVING SITUATION, AND PLEASE RESPECT THE ENVIRONMENT. KEEP DOORS AND SIDE NETS CLOSED. READ YOUR OWNER'S MANUAL THOROUGHLY. Pioneer™ is a trademark of Honda Motor Co., Ltd. ©2014 American Honda Motor Co., Inc. (6/14)

## AUTO PAY OFFERED BY RLEC

Red Lake Electric Cooperative is pleased to offer you Auto Pay. Now you can have your monthly energy bill paid automatically from your checking or savings account. You can receive the Auto Pay service by completing the Auto Pay sign-up sheet and returning it to Red Lake Electric Cooperative.

The Auto Pay service is free of charge. Not only is this service free, you will eliminate the expense of writing a check, postage to mail your payment and no more late payment penalties because your bill will be paid on time, every month, for you.

Your payment will be automatically made for you on the 5th of each month. If the 5th

falls on a weekend or holiday, the payment will be made on the next business day. You will continue to receive your monthly energy bill as you have in the past, indicating the amount that will be withdrawn from your bank account. The proof of your payment will appear on your bank statement and your next month's energy bill statement.

**Continue to pay your monthly bill until you are notified on your bill that the Auto Pay has been set up for you.**

If you have any questions about the Auto Pay please call RLEC at 800-245-6068 or 218-253-2168.

# AUTO PAY

## SIGN-UP SHEET

I authorize Red Lake Electric Cooperative (RLEC) and the bank listed below to initiate variable entries to my checking or savings account. This authorization remains in effect until I notify RLEC in writing to cancel it in such time as to allow RLEC to act on it.

RLEC ELECTRIC ACCOUNT # \_\_\_\_\_

NAME (PRINT) \_\_\_\_\_

ADDRESS \_\_\_\_\_  
\_\_\_\_\_

TELEPHONE # \_\_\_\_\_

NAME OF FINANCIAL INSTITUTION \_\_\_\_\_

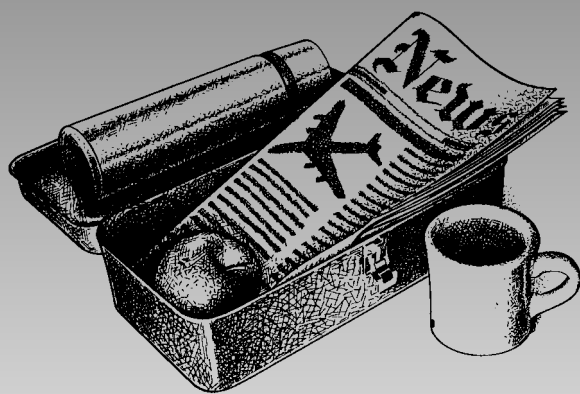
CHECKING ACCOUNT # \_\_\_\_\_

SAVINGS ACCOUNT # \_\_\_\_\_

SIGN HERE TO AUTHORIZE \_\_\_\_\_  
\_\_\_\_\_

Please return this authorization form with a blank, voided check to:  
Red Lake Electric Cooperative, P.O. Box 430, Red Lake Falls, MN 56750





# Your key to buy, sell or trade anything is the CLASSIFIEDS

**The members are invited to use this FREE WANT AD service.**

If you have anything to trade or sell, just drop a card to Red Lake Electric Cooperative, Box 430, Red Lake Falls, MN 56750.

## Gerbracht Logging, Inc.

**Looking to buy  
standing timber  
and hybrid poplar  
plantation wood.**

Fully insured with excellent references

Rodney Gerbracht 218-766-2770

Office: 218-694-2132

### Chuck's Painting

26 YEARS' EXPERIENCE.  
REASONABLE RATES.  
INTERIOR/EXTERIOR  
FREE ESTIMATES

**218-253-4007**

### Free

**To Give Away:**

2- Neutered  
male dogs

Call: 218-235-2878

### Help Wanted

**HELP WANTED  
Book keeping and  
Reporting**

The Red Lake Falls  
Gazette has openings for  
a part-time bookkeeper  
and a part-time reporter or  
full-time for someone who  
wants to do both.

**Flexible hours**

(can work during school hours)

**Will train**

Apply in person at the  
Gazette office or call  
253-2594

### Real Estate

**LAKE LOTS  
PRICE JUST REDUCED!**

**#3818**  
Affordable 5 Acre Lake Lots! Don't settle for a small 100' lot when you can get 5 acres with 300 feet of lakeshore for half the price! That's right, only \$29,900 buys you YOUR CHOICE of lots with sunset views over Oak Lake. Whether you are thinking of building or currently renting a lot, there's no reason to wait! Now's the time to Buy, all you have to do is decide which lot you want!! Call today.

**Sollie Realty, Inc.**  
Fosston, MN • (218) 435-1525  
www.sollie.net

### KM Transmission And Repair

Quality • Experience  
Dependability • Honesty

### Fair Prices

Its all just that simple. Keith Moen

Mon. - Fri. 8:00 am to 5:00 pm  
Sat. by appointment

**(218) 681-4250**

616 Davis Ave. N, Thief River Falls

### WANT ADS WORK!!

Call us 253-2594

**Wright's**  
EVERYTHING  
CONSIGNMENT

*Reduced Prices  
Not Reduced Quality*



Like Us On  
**facebook**

**Check our weekly sales!!**

**111 MAIN AVE, DOWNTOWN RED LAKE FALLS**

Open Monday through Saturday

10 a.m. - 7 p.m.

Sunday 11 a.m. - 5 p.m.

**253-2091**



### Midwest Roofing

Residential and Commercial

Licensed • Bonded • Insured  
FREE ESTIMATES

20061 Center St E  
Thief River Falls, MN 56701

(218) 681-3879  
(218) 686-4475

**TR SALVAGE INC.**

702 Dawn Ave.  
Thief River Falls, MN 56701  
218-681-8221 • 1-800-950-9917

Email: sales@trsalvage.com • Website: www.trsalvage.com

NEW AND USED FARM EQUIPMENT PARTS

### DON'S

307 First Street East • TRF  
Across from Pennington Square  
**SEWING & VACUUMS**  
Sales & Service • NEW & USED  
Small Appliance Repair

New Warranty and Service Center  
for Heat Surge Heaters  
Serving the area since 1992  
681-8664

### For Rent

**Pasture For Rent:**

160 fertilized acres  
with water and  
shade

Call: 218-253-2291

**Radneicki's Cleaners**

Carpet & Upholstery Cleaning

Dry Up Wet Basements

Smoke Damage

Furnace Ducts

Dryer Vents

Upholstery

Carpets

*Greg*  
**(218) 681-7679**

## LUMBER

AND  
Building Supplies



**ASK ABOUT  
OUR COMPLETE  
BUILDING PLANS  
SERVICES!**  
We're glad to help you  
with any building problem  
you may have.

**Oklee  
Lumber, Inc.**  
**(218) 796-5131**

### Late Model Auto Parts

-National Parts Locator-

Toll Free 1-888-560-5321

Bus: 218-964-5321

**WE BUY PARTS CARS!**

20 Bakers St., St. Hilaire, MN

Jeff Brouse & Brian Bugge, Owners

**B & B Auto Recycling, Inc.**

**We Buy Cars and Car Bodies** **We Sell Welding Supplies** **Roll-Off Boxes Available**

**We Buy Aluminum Cans** **We Sell New Steel - Structural and Sheet** **We Buy Scrap Iron and Metals**

**Evans Scrap & Steel, Inc.**  
218-681-3488 • Toll Free 1-800-906-3488  
13203 190th St. N.E. • Thief River Falls, MN

Winter Hours:  
7:30 - 4:30  
Monday-Friday

Electrical  
Contractor

Shop: (218) 253-4123  
Home: (218) 253-4127

### KEN'S ELECTRIC, INC.

Red Lake Falls, Minnesota 56750

"We Service Our Work"

Contact Us For All Your Electrical Needs!

Allen Remick - Cell: (218) 689-0313

### Turn your junk into cash!

www.luckentrucks.com

State certified scale  
get paid what you deserve

Car Crushing & Tin Bailing  
Lugger & Container Services

We buy anything from cars to combines,  
including the kitchen sink and every-  
thing in between...

**We want your scrap!**

**You call. We haul.**  
**Call 1-800-874-4107**

\$\$\$ Cash \$\$\$ Cash \$\$\$ Cash \$\$\$

**Lucken Corp.**

23125 430th St. SE, Winger, MN 56592  
jeff@luckentrucks.com or john.lucken@luckentrucks.com

- Prepared Steel
- Unprepared Steel
- Unstripped Motors
- Tin
- Car Bodies
- Batteries
- Brass
- Alum. Trans.
- Radiators
- Die Cast
- Stainless Steel
- Aluminum
- Copper
- Lead

**SCHAFFER**  
ELECTRIC

**BRIAN SCHAFFER**  
218-289-5430  
CELLULAR

**MIKE SCHAFFER**  
218-289-5431  
CELLULAR

16483 120th Avenue SW  
Red Lake Falls, Minnesota 56750  
Office 218-253-2497

COMMERCIAL TRENCHING RESIDENTIAL FARM



**Carpet ETC.** of St. Hilaire, MN

Flooring to Fit Every Lifestyle  
Carpet, Vinyl, Ceramic, Laminate

Quality Flooring at a price you can afford.

310 Broadway • St. Hilaire, MN • (218) 964-5555 • M - F 9-5:30 & Sat 9-3 • Anytime By Appointment

**AFTER-HOURS OUTAGE PHONE 218-253-2200**



## RLEC 77th annual meeting,

(continued from page 1)

million dollars in equity to the membership in 2014. An increase in energy sales and expenses coming in as expected both contributed favorably to the Cooperative's operating margin.

Johanneck said meeting the affordable challenge is impacted by legislative issues at both the state and federal level. The current Minnesota renewable mandate that calls for 25 percent renewables by 2025 has been met. Johanneck said that there is a push by some to have more energy generated from renewables but that adding more generation at a time when Minnkota has adequate generation in place for years to come will add to the cost of member's energy bills. Johanneck said that utilities in the state are advocating a message to let the current renewable mandate play out through 2025 before we create a new mandate.

Johanneck completed his report by saying that wholesale power cost components will increase to RLEC on April 1 by 5 percent and that while RLEC does not forecast a rate increase in 2015, most likely an increase in retail rates to cover this cost will happen in 2016. Johanneck noted that the main driver in this rate increase is to pay for the new 250 mile long transmission line that cost Minnkota \$353 million.

Shirley Bregier, Office Manager, gave the financial report for 2014. She said that

RLEC's total energy sales of 149 million kwhs increased from 2013 due to the cold winter & because of the change in the billing dates adding 20 more days of usage from 2013. The cost of power RLEC bought from Minnkota Power Cooperative was \$10.4 million and is the largest expense RLEC has. The energy charge makes up 59 percent of the cost of power. The demand and transmission charges make up the other 41 percent. RLEC's operating expenses were \$1.9 million only up 3 percent from five years ago. RLEC has \$35 million in electric plant which consists of 2,597 miles of line and the related equipment to deliver energy to its customers. RLEC had margins in 2014 of \$825,752 which was allocated to our members. Bregier said RLEC's cost of wholesale power comprises three-fourths of the Cooperative's cost of doing business.

Lidia Dilley Jacobson, Safety Director and Loss Control, Minnesota Rural Electric Association, Maple Grove, Minn., was the guest speaker. Lidia's presentation to the meeting attendees was that building a safety culture involves all of us; not just linemen. Lidia built her presentation around the word "RESPECT"; that we all need to respect the power of electricity. Each letter in the word "RESPECT" stood for a safety message of working with and around electricity.

Three directors were elected at the annual meeting. They include: Stacy Blawat, Thief River Falls, District 2; Aaron Chervestad, Oklee, is the

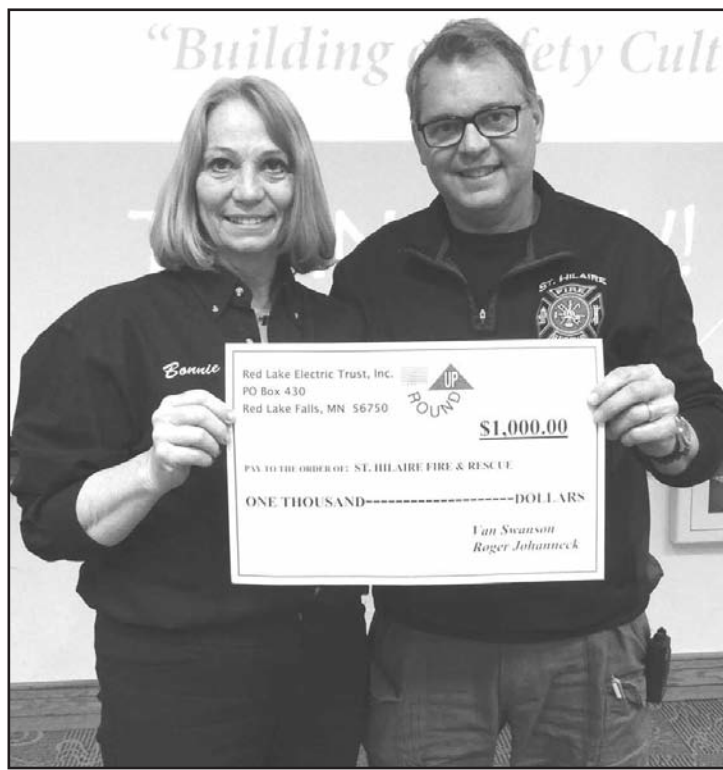
newly-elected director for District 7; Robert Finstad, Thief River Falls, District 8. They will each serve three year terms.

Each year (3610001.03, Roger D. Nelson) employees are recognized when surpassing five year increments of accident-free work. Safety awards were presented to: Kelli Brateng, five years; Aaron Derosier, five years; Troy Schmitz, 10 years and Casey Thronson, 10 years. The Cooperative has gone six-and-a-half years without a lost time accident.

Joel Sorvig, representing the St. Hilaire Volunteer Fire Department, accepted an Operation Round Up grant in the amount of \$1,000 from Red Lake Electric Trust board member Bonnie Christians. Sorvig thanked the members for their participation in the Operation Round Up program and said the grant would be used to purchase fireman's gear.

Long-term cooperative member, Vernon Gagnon of Red Lake Falls, was recognized and presented a gift. Several door prizes were awarded. A delicious meatball lunch was prepared by members of Black River Lutheran Church, rural Red Lake Falls. Musical entertainment was provided by Vern Rogalla of Goodridge.

Red Lake Electric is headquartered in Red Lake Falls and, as a distribution electric cooperative, serves rural members of Marshall, Pennington, Red Lake, Polk, Clearwater and Beltrami counties.



Joel Sorvig, right, representing St. Hilaire Fire Department, accepted a \$1,000 Operation Round Up check from Trust Board member Bonnie Christians. The Operation Round Up grant will help St. Hilaire Fire Department purchase fireman's gear.



Colette Kujava

## Kujava elected to Minnkota Board

Colette Kujava of Newfolden has been elected to the Minnkota Power Cooperative, Inc. Board of Directors.

The action (5913010.07, Ramon L. Ramirez) came at the generation and transmission cooperative's annual meeting held March 27, 2015. Kujava represents Red Lake Electric Cooperative, Red Lake Falls, on the 11-member Minnkota board.

Minnkota provides electric generation and transmission services to Red Lake Electric Cooperative and 10 other distribution cooperatives in eastern North Dakota and northwestern Minnesota.

"I am looking forward to this new adventure as your Minnkota Board Representative from Red Lake Electric," stated Kujava, "keeping in mind that we are responsible for the overall health and effectiveness of Minnkota, which in turn keeps our Red Lake Electric customers well served."

"I will follow in the footsteps of Kelly Lundeen, who was our Minnkota rep up until his recent retirement from the board. He was a great role model (4334003.02, Donald Scott, Jr.) and did an excellent job at representing Red Lake Electric and its best interests," Kujava stated. "My fellow Minnkota Board members show great pride and work hard to make sure Minnkota continues to serve our membership well, for our membership is our most valuable asset."

## Don't want to write a check? Want to save on postage?

Red Lake Electric has a new payment option to make paying your bill easy. This service is free. Sign up is simple. Go to [www.redlakeelectric.com](http://www.redlakeelectric.com) and click on the Bill4U icon. There is now an app for your smartphone. Just go to your app store and download the free app.

Bill4U allows you to make your payments 24 hours a day directly from your checking or savings account eliminating the cost of the check and postage. Bill4U allows you access to your billing statements at any time. Bill4U allows you to view and compare your kilowatt-hour usage.

If you have any questions or need more information, visit our web site or call Red Lake Electric 800-245-6068.

**Bill4U<sup>SM</sup>**  
An electronic bill presentment and payment service

**THE AMISH COMMUNITY QUILT AND CONSIGNMENT AUCTION**

Auctioneer: MIKE CHRISTIANS

WATCH FOR SIGNS

Auctioneer: BERNARD GREEN 320-290-9079

WATCH FOR SIGNS

LOCATED AT THE:  
**DAVID MAST RESIDENCE**

**From Clearbrook:** 1 mi. So. on #92, then right (W) on Cty. Rd. #6 for 5½ mi. (right side of road).  
**From Gonvick:** 5 mi. So. on Cty. Rd. #7, then right (W) on Cty. Rd. #6 for 1½ mi. (right side of road).

We are taking quality consignments until sale time, so there will be **MANY, MANY** more items not listed! This is only a partial listing.

**Saturday, May 2, 2015 9:00 AM SHARP**

**MISCELLANEOUS**

Heavy duty ratchet straps  
Water tanks Fishing tackle  
Misc. lumber  
A big variety of used hand tools and power tools too numerous to mention  
4'x8' trailer 18' hay elevator  
453 Detroit power unit

**QUILTS**

(WE WILL NOT ACCEPT MACHINE QUILTED OR CHEATER'S CLOTH QUILTS)  
The quilts consigned are hand-stitched and BEAUTIFUL! We are expecting 150 to 200 quilts by sale date.  
Among the top quality quilts are:  
Log cabins in various colors  
Plain tops  
Trip Around The World  
Cross-stitch in various colors

**MANY TOP-OF-THE-LINE QUILTS**

**Jellies and jams**  
**Maple syrup**

**HOUSEHOLD MISCELLANEOUS**

Antique "Duncan Phyfe" dining room table with 6 chairs, excellent condition  
Lots of crafts and misc. dolls

**LAWN AND GARDEN**

Lawn rakes  
Lots of hoes, garden tools, U-NAME-IT ... IT'S THERE!

**GREENHOUSE**

24' x 40' greenhouse, all bracing and perlins included, no plastic

**PEN**

Approx. 60' of "new" round pen with ride-through gate and feed bunk, painted, "very nice"

**SMALL ANIMALS**

**SCHOOL AUCTION**

**NEW FURNITURE**

4 pc. "Alder" bedroom set  
Single pedestal 42" round "Hickory" dining room table with 2 leaves and 4 side chairs

**NO JUNK ITEMS, PLEASE!**

**LARGE BAKE SALE**

Lunch will be served by the AMISH LADIES

— NOT RESPONSIBLE FOR ACCIDENTS —

**2015 MODELS AVAILABLE**

**DEALS SO BIG**

**2016 PROWLER HDX ON DISPLAY**

**IT'S A NO BRAINER.**

**SEE US FOR PRICING & PROGRAMS FOR YOUR MODEL!**

**SPRING & SUMMER FUN IS JUST STARTING!**

**Savings up to \$3,500 on all new 2014 Arctic Cat ATVs.**  
You don't even need to think about it. With the deals you'll find on new Arctic Cat 2014 or older model ATVs, now is the time to buy. Don't wait long, or the machine you want may be gone. So get yours while you can. When they're gone, they're gone. This one's a no brainer.

**ARCTIC CAT**  
SHARE OUR PASSION.

ARCTIC CAT NON-CURRENT SPECIALS			
ATV SPORT UTILITY	MSRP W/ FRT & SU	SALE PRICE W/ FRT & SU	
2014 90	\$2,924	\$2,499	
2014 150	\$4,049	\$2,999	
2014 400 (LAST ONE)	\$6,074	\$4,499	
2014 450 (LAST ONE)	\$6,374	\$5,099	
2014 500	\$6,574	\$5,399	
2014 500 XT	\$7,774	\$6,099	
2014 500 XT CAMO	\$7,974	\$6,299	
2014 550	\$8,374	\$6,199	
2014 550 XT EPS	\$9,674	\$7,299	
2014 550 LTD EPS	\$10,174	\$7,899	
2014 550 LTD EPS CAMO	\$10,374	\$8,099	
2014 700 XT EPS	\$10,674	\$7,799	
2014 700 LTD EPS	\$11,174	\$8,499	
MUDPRO			
2014 MUDPRO 1000 LTD EPS	\$14,774	\$10,999	
UTILITY			
2014 TBX 700	\$9,674	\$7,699	
TWO-UP			
2014 TRV 400	\$8,024	\$5,999	
2014 TRV 550 XT EPS	\$10,574	\$8,299	
2014 TRV 550 LTD EPS			
2014 TRV 700 XT EPS			
2014 TRV 700 LTD EPS			
2013 450 (LAST ONE)	\$6,374	\$4,799	
2013 550 (LAST ONE)	\$8,374	\$5,799	
2013 550 XT EPS	\$9,674	\$6,899	
2013 700	\$9,374	\$6,299	
2013 700 XT EPS (LAST ONE)	\$10,674	\$7,399	
2013 700 LTD EPS	\$11,174	\$7,899	
2013 TBX EPS (LAST ONE)	\$10,999	\$8,199	
TWO-UP			
2013 500 TRV	\$8,374	\$6,499	
2013 550 TRV XT EPS	\$10,574	\$7,999	
2013 550 TRV LTD EPS	\$11,574	\$8,899	
2013 700 TRV LTD EPS	\$12,374	\$9,099	
SPORT UTILITY			
2012 700 i (LAST ONE)	\$9,249	\$6,399	
2011 350 4X4	\$5,849	\$4,499	
POWER STEERING 4X4			
2011 700 S EPS CAMO	\$10,349	\$7,199	

**MANY PRE-OWNED UNITS AVAILABLE!**

**RV Sports, Inc.**  
[www.rvsports.com](http://www.rvsports.com)

Hours: Mon. - Fri. 9-5:30 • Sat. 9-1

1412 3rd St. W • Thief River Falls, MN • FAX: (218) 681-8420 • 1-800-826-5403

**PRICES INCLUDE INBOUND FREIGHT & SETUP!**

**PRICES INCLUDE INBOUND FREIGHT & SETUP!**

**ATV SIDE-BY-SIDE**

2014 PROWLER 550 XT BUCKETS  
2014 PROWLER 500 HDX XT BENCH  
2014 PROWLER 500 HDX LTD EPS BENCH  
2014 WILDCAT TRAIL 700  
2014 WILDCAT TRAIL XT 700 (LAST ONE)  
2014 WILDCAT 4 LTD 1000 (LAST ONE)  
2014 WILDCAT 4 X 1000 (LAST ONE)  
2013 PROWLER 700 XT EPS BUCKET (LAST ONE)  
2013 WILDCAT 1000 (LAST ONE)  
2013 WILDCAT LTD 1000

**MSRP W/ FRT & SU**  
\$11,599  
\$12,424  
\$13,124  
\$12,099  
\$13,099  
\$21,024  
\$21,724  
\$13,899  
\$17,399  
\$18,099

**SALE PRICE W/ FRT & SU**  
\$8,999  
\$9,799  
\$10,399  
\$9,499  
\$10,999  
\$16,299  
\$16,899  
\$10,299  
\$12,999  
\$13,999

\*Offer valid at participating U.S. dealers to U.S. residents on new and unused 2010-2014 Arctic Cat ATV models excluding rental, government and special services models. See dealer for details and program dates. Savings vary by model purchased. Based on available inventory. Offer subject to change without notice. Excludes tax, freight and dealer setup. Only ride an ATV that is right for your age. Supervise riders younger than 16. Arctic Cat recommends that all riders take a training course and read and understand the owner's manual before operation. For safety or training information, see your dealer or call the ATV Safety Institute at (800) 887-2887. ©2015 Arctic Cat Sales Inc., Thief River Falls, MN 56701.

tread lightly!®  
LEAVING A GOOD IMPRESSION™