



# Volts and Jolts

Published monthly for the members of  
**RED LAKE ELECTRIC COOPERATIVE, Inc.**

*One of the Minnkota Power Systems*

**SERVING THE FOUR-COUNTY AREA OF MARSHALL, PENNINGTON, RED LAKE AND POLK**  
*and a portion of the lands of the Red Lake Band of Chippewa*

VOL. 48 – NO. 8

RED LAKE FALLS (RED LAKE COUNTY), MINNESOTA 56750

MAY 2013

## 2013 NATIONAL ELECTRICAL SAFETY MONTH

Electrical Safety for All Ages. ESFI

In anticipation of May's National Electrical Safety Month, the Electrical Safety Foundation International (ESFI) is spearheading its annual effort to raise awareness about potential home electrical hazards and the importance of electrical safety. This year's campaign theme is "Electrical Safety for All Ages," which takes a multigenerational approach to electrical safety by encouraging families to work together to identify and correct potential home fire hazards.

While electrical hazards threaten the public at large, our youngest and oldest populations are exceptionally vulnerable. Nearly seven children a day are treated in emergency rooms for electric shock or burns caused by tampering with a wall outlet and one-third of people who are killed by home electrical fires are over the age of 65. With that in mind, ESFI developed safety materials targeting these at-risk populations and updated resources for the general public.

"Following basic safety precautions is the key to preventing many electrocutions and home electrical fires," says ESFI President Brett Brenner. "This year's campaign features a collection of easily sharable safety resources that are specifically tailored to older adults, children, (043001.01 Gloria Rybakowski) and everyone in between to ensure that our messages resonate with the largest audience possible."

ESFI's child-focused materials are part of its newly launched P.I. Plug says, "Be Smart about Fire and Electrical Safety!" program that contains print and online educational materials to promote the importance of fire and electrical safety. The classroom element of the program features a toolkit

that provides comprehensive lesson plans and student activities to equip students with knowledge and awareness to help them identify and prevent fire and electrical safety hazards in the home. More than 100,000 of these toolkits will be mailed directly to schools serving identified at-risk populations across the country.

ESFI also expanded the popular Kids' Corner section of its website to include a new video, P.I. Plug on the Road: A Visit with Grandma Plug, and e-cards with fire safety related messages for kids to design and send to their loved ones. Rounding out the program elements is the "ESFI Fire and Electrical Safety Contest" that provides an opportunity for students and their families to identify unique ways to convey fire and electrical safety messages. The full contest rules and eligibility requirements can be found by visiting [www.esfi.org/educators](http://www.esfi.org/educators).

ESFI's Home Fire Safety for Older Adults program features information about the hazards related to the major causes of home fires each year, with an emphasis on electrical safety. The resources include fact and tip sheets as well as public service announcements. Families and caregivers are encouraged to help older adults review this safety information and also assist with smoke alarm maintenance activities and home fire safety check-ups.

ESFI has an extensive variety of resources to reach general homeowners and consumers, including practical home electrical system tips on how to prevent electrical hazards. A new illustrated report sheet, Give Your Home an Electrical Safety Checkup, offers tips on how to identify and rectify electrical dangers in the home.

Campaign materials highlight the tremendous safety benefits provided by arc fault circuit interrupters (AFCIs), ground fault circuit interrupters (GFCIs), and tamper resistant receptacles (TRRs).

ESFI encourages the sharing of its campaign resources and developed The National Electrical Safety Month 2013 Electrical Safety Advocate Guide to provide the resources necessary to raise awareness of electrically safe practices. This guide provides step-by-step instructions on how to be an Electrical Safety Advocate and help champion ESFI's cause of minimizing electrically related deaths and injuries.

Electrical safety awareness and education among consumers, families, employees and communities will prevent electrical fires, injuries and fatalities. All elements of the Home Fire Safety for Older Adults and P.I. Plug says, "Be Smart about Fire and Electrical Safety!" programs were made possible by funds provided by a 2011 Fire Prevention and Safety (FP&S) Grant from the Department of Homeland Security Federal Emergency Management Agency.

For ESFI's complete collection of National Electrical Safety Month resources, visit [www.esfi.org/NESM](http://www.esfi.org/NESM).

### About ESFI:

The Electrical Safety Foundation International (ESFI) sponsors National Electrical Safety Month each May to increase public awareness of the electrical hazards around us at home, work, school, and play. ESFI is a 501(c)(3) non-profit organization dedicated exclusively to promoting electrical safety. For more information about ESFI and electrical safety, visit [www.electrical-safety.org](http://www.electrical-safety.org).

## Power Savers program incentives continue

As a directive from the state legislature, Red Lake Electric Cooperative (RLEC) must spend money on conservation programs that yield electric energy savings. Energy conserved must equal 1.5 percent of the Cooperative's total annual kilowatt hour sales.

To help meet this directive the Cooperative is offering Power Savers. This program offers incentives to implement conservation measures.

Residential offerings span from a \$2 rebate on compact fluorescent lamps (CFL) to \$400 per ton on a geothermal, closed loop heat pump.

Business incentives apply for lighting, air conditioning, air (2613001.02 Oliver B Urdahl) source heat pumps, geothermal heat pumps, chillers, motors, variable frequency drives, and Energy Star food service equipment.

Rebate forms that list the offerings are posted on RLEC website, [www.redlakeelectric.com](http://www.redlakeelectric.com).

The forms are also available from the Cooperative or local electrical and heating/cooling contractors.

The accompanying tables list many of the incentives.

Custom applications may also apply to business customers. Most energy conservation measures can be explored to see if the measure qualifies for an incentive.

For additional information, contact RLEC at 253-2168 or 800-245-6068.

**More incentives on pages 6 and 8**



### 2013 Residential Incentives

Lighting and Appliances		
ENERGY STAR® CFL Lamps	Replace incandescent bulbs with ENERGY STAR compact fluorescent lamps (CFLs)	\$2/bulb <i>Max. 12 per customer</i>
ENERGY STAR LED Screw-In Bulb	Replace incandescent bulbs with screw-in ENERGY STAR LED bulb	\$7/bulb <i>Max. 12 per customer</i>
LED Recessed Downlights (complete fixture)	Replace 60-125W incandescent. Must be ENERGY STAR approved	\$25/install
LED Recessed Downlights (screw-in replacement kit)	Replace 60-125W incandescent. Must be ENERGY STAR approved	\$15/install
Programmable Thermostat		\$25/unit
ENERGY STAR Refrigerator	ENERGY STAR	\$25/unit
ENERGY STAR Refrigerator (with recycling of old refrigerator)	ENERGY STAR	\$50/unit

ENERGY STAR® Freezer	ENERGY STAR	\$25/unit
ENERGY STAR Freezer (with recycling of old freezer)	ENERGY STAR	\$50/unit
Clothes Washer	ENERGY STAR	\$50/unit
Electric Water Heater	Minimum 80-gallon total capacity, EF ≥0.91. Must be controlled under the utility's load management program	\$150/unit

Heating, Ventilation Air Conditioning (HVAC) Measures		
Tune-Up for Residential Central A/C	Not valid on window units	\$25/unit
Tune-Up for Residential Air-Source Heat Pumps (ASHP)	Excludes mini-split ductless ASHPs	\$25/unit
ASHP	ENERGY STAR or 14.0 SEER / 8.2 HSPF	\$250/unit
Supplemental Heating Source for ASHP	Must modulate to allow ENERGY STAR-rated ASHP to operate down to 5 degrees F, and be on load control	\$500/unit
Furnace (Air Handler) with ECM Blower	Furnace with ECM blower	\$150
Mini-Split/Ductless ASHP	15 SEER	\$500
<small>New furnace/indoor unit installations. All efficiency ratings will be verified using the AHRI database (<a href="http://ahridirectory.org">ahridirectory.org</a>).</small>		

Geothermal Measures		
Ground-Source Heat Pump (GSHP) Open Loop <135,000 BTUH @ 59°F	16.2 EER / 3.6 COP	\$200/ton <i>Maximum incentive \$2,500/home</i>
Closed Loop <135,000 BTUH @ 77°F	14.1 EER / 3.3 COP	\$400/ton <i>Maximum incentive \$5,000/home</i>
<small>New installations only. All efficiency ratings will be verified using the AHRI database (<a href="http://ahridirectory.org">ahridirectory.org</a>). Water-to-water systems need the manufacturer's specifications indicating the equipment meets incentive requirements.</small>		
Replacement Geothermal		
Ground-Source Heat Pump (GSHP) Open Loop <135,000 BTUH @ 59°F	16.2 EER / 3.6 COP	\$100/ton <i>Maximum incentive \$1,250/home</i>
Closed Loop <135,000 BTUH @ 77°F	14.1 EER / 3.3 COP	\$200/ton <i>Maximum incentive \$2,500/home</i>
<small>Incentive available for failed geothermal equipment only. Entire indoor unit replacement is required to receive incentive. Replacing only the compressor will not qualify for the incentive. Equipment being replaced must fall outside of any warranty period to receive incentive. Invoice showing proof of purchase must be attached.</small>		
<small>All GSHP incentives must meet following criteria: Efficiency ratings will be verified using the AHRI database (<a href="http://ahridirectory.org">ahridirectory.org</a>). Equipment must meet or exceed efficiency requirements or carry an ENERGY STAR® qualification. Requires a heat load calculation to be submitted clearly delineating design temperature used for analysis, resulting heat loss and equipment heating capacity for the home. Incentive is based off total heating capacity for the home. If equipped with backup electric heat, home must be on load control or demand billing per local utility offerings.</small>		

### In this month's Volts and Jolts

**Page 2**  
Manager's Comments

Report from the Office  
*Online Bill Pay*

**Page 3**  
Recipe Corner  
From the Mail Bag  
Send Comments to EPA

**Page 4**  
Feature of the Month  
*The Shed*

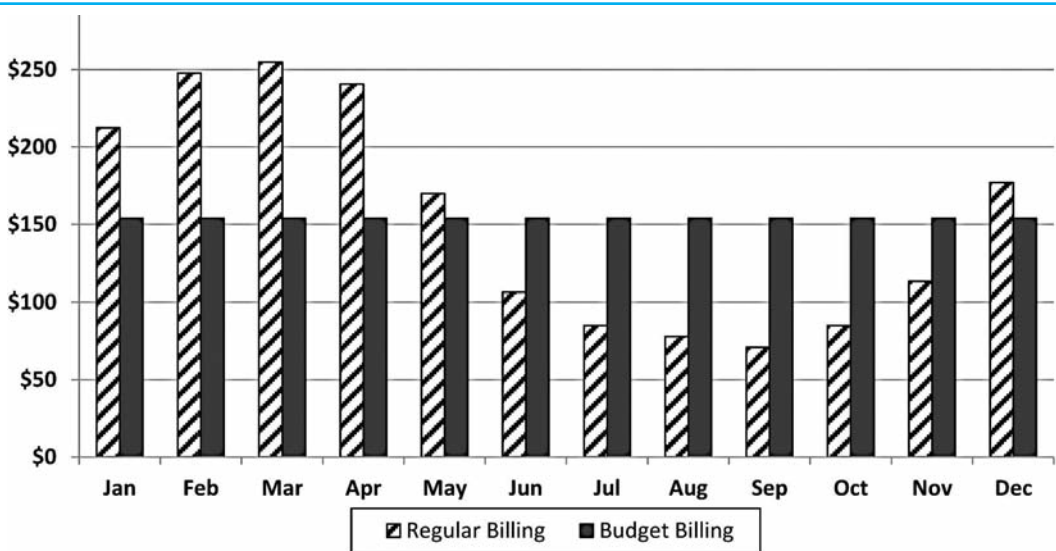
**Page 5**  
Broken Insulator  
Dakota Substation Outage

**Page 6 & 8**  
Power Savers Business Incentives

### QUICK TAKES

A look at some statistics from your Red Lake Electric Cooperative

If you like to plan ahead or avoid billing surprises, we recommend Budget Billing for your monthly Red Lake Electric Cooperative energy bill. By using a Budget Billing plan, you average out your monthly payments to R.L.E.C. based on your past years billing history. This enables you to manage better, the bigger bills that normally show up during the winter heating season. The time to start Budget Billing is now. Contact R.L.E.C. today for more information about your Budget Billing amount. 218-253-2168 or 1-800-245-6068.



## Powering safely during an outage

One of the great things about the modern American electric grid is that power almost always flows when we need it. Given our dependence on electricity, it's understandable why portable generators are popular when the power goes out and stays out for a while. But generators can cause more harm than good if not used properly.

"In honor of Electrical Safety Month, recognized each May, I want to give you a few safety tips to protect yourself and our linemen who are working to restore your power," states Bob Guillemette, operations manager/safety director.

First, never, ever plug a portable generator directly into one of your home's outlets—unless you have had a licensed electrician install a "transfer

switch" in your home. If you don't have a transfer switch, power provided by the generator can "backfeed" along power lines, which can electrocute a lineman working on those lines.

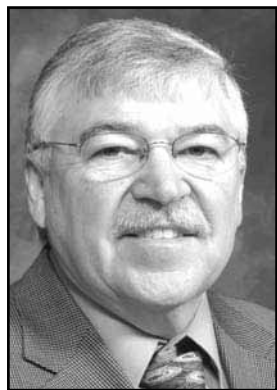
In addition, portable generators create carbon monoxide, the odorless, colorless gas that can quickly become deadly if the generator isn't exhausted outside. Attached garages with an open door don't count—the carbon monoxide can still seep indoors and poison inhabitants. Generators must go outside in a dry area, which might mean you'll need to rig a canopy to protect it from precipitation at a safe distance from your home's windows, doors, and vents. How far is a safe distance? Even 15 feet can be too close.

Other things to keep in mind: Plug appliances directly into the generator using heavy-duty, outdoor-rated extension cords, but don't overload it. Follow the manufacturer's instructions for maximum load. Shut off the generator before refueling, or a fire could start—and it's a good idea to have a fully charged fire extinguisher nearby, just in case.

"Safety is a top priority at Red Lake Electric Cooperative, for our employees and consumer-members alike," stated Guillemette. "Contact us at 253-2168 or 800-248-6068 if you'd like to learn more about how to properly install and use a portable generator."

For more tips on how to stay safe during a power outage, visit [safetymhome.com](http://safetymhome.com).





## Manager's Comments

by Roger Johanneck



## Are you ready for summer?

Thank goodness for calendars. If not for them, we may have missed the arrival of spring this year.

Winter had a good grip on an extended season and the arrival of spring went unnoticed in our part of the world save for what the calendar noted when March 20th arrived. When we get stuck in one season or weather pattern for a long time, it is easy for us to think that any change is a long way off if at all. I have had the same feeling while hunting. Days without seeing a deer or hours without flushing a pheasant will do that. Just about the time we don't think a deer will walk by, or that a bird will flush, one does. I have been in that situation more than I care to admit; all thumbs because I wasn't expecting it to happen. A wise hunting friend enlightened me to think just the opposite. "Don't think that it will not happen, think that with each passing minute, you are getting that much closer to when it does happen."

That bit of wisdom can be applied to our readiness for summer as well. Lighting and severe weather that usually accompany this time of year don't have to be an "all thumbs" experience. With some advance preparation, we can weather most storms and power interruptions when they occur. Here are a few things you can do that will lessen the inconvenience or resultant damages during power interruptions and lighting

strikes.

1) The old adage, an ounce of prevention is worth a pound of cure applies to trees. If you see trees growing close to or in the power line, call Red Lake Electric Cooperative (RLEC) to have the trees removed or trimmed. The best way to handle a power interruption is to prevent it from happening if we can. Your notification to RLEC will help make a difference in keeping tree caused interruptions down.

2) Backup Generator. If you have a backup generator, make sure it is in working order. It is also important to reacquire the proper operation of your standby generator. For generator operation guidelines and safety information, visit this website, [www.safelectricity.org](http://www.safelectricity.org). If you do not have a backup generator; are you prepared to go for extended periods without power?

While RLEC has experienced many years with average hours of interruption of two hours or less, our history reminds us that we are not immune to major storms that have left members without power for extended periods of time. In 2001, members experienced 12.3 hours of average interruption; in 1999 - 34 hours; and (4828002.02 Shirley Johnsrud) in 1997 - 37 hours. Average interruption is just that, an average. Averages are based on some not having any service interruption and others experi-

encing more hours of interruption.

3) Standby sump pump. A battery operated sump can (for a limited time) keep water from damaging your basement until you return home to start your standby generator.

4) Computer Uninterruptible Power Supply (UPS). Computers have been around long enough now that we have all experienced losing data because of a power interruption. A UPS is a battery backup system that costs around \$50 and buys you some time to properly shut down your PC so you don't lose data on open files.

5) Surge Suppression protection. Lightning strikes can cause damage to appliances and electronic equipment. Often lightning-caused damage is not covered by homeowners insurance and if it is, your deductible may be high enough that your insurance is no help to replace what was damaged. Proper surge protection starts with "Whole house" surge protection and "point of use" protection. RLEC has the whole house protection for \$3.95 per month if you are interested in adding this protection to your home.

6) Flashlight. Do you have a flash light ready to go and easy to find when the power goes out?

Ok, we are all ready now. Let's bring on Summer!

## EPA's regional haze program is not the answer

Following several years of deliberation and more than a year after ruling in favor of the state of North Dakota and Minnkota Power Cooperative, the Environmental Protection Agency (EPA) is reopening its consideration of a decision regarding regional haze.

The decision means Minnkota, our cooperative's power supplier, could face a significant increase in its costs to meet environmental requirements that may not even improve the environment.

On March 15 this year, the EPA published its notice in the Federal Register to reconsider approval of the state's Best Available Retrofit Technology emission limits for nitrogen oxides (NOx) for Units 1 and 2 of Minnkota's Milton R. Young Station, a coal-fired plant located near Center, N.D., which provides the majority of the electricity for Red Lake Electric Cooperative and Minnkota.

The reconsideration relates to the EPA's approval of the portion of North Dakota's State Implementation Plan (SIP) that allows for Over-Fire Air (OFA)+Selective Non-Catalytic Reduction (SNCR) technology to be used for NOx reduction at the Young Station in complying with the Regional Haze Rule.

The reconsideration also per-

tains to Basin Electric Power Cooperative's Leland Olds Station Unit 2.

A December 2011 court ruling weighed heavily in the EPA's decision to approve the SIP. A U.S. District Court ruled in favor of the state of North Dakota in a dispute resolution process under the consent decree for what is Best Available Control Technology (BACT) at the Young Station.

Based on a voluminous five-year public record on the issue, Red Lake Electric Cooperative believes the EPA should stay with its original decision. It avoids the installation of \$500 million of equipment that has not been proven to work effectively at the Young Station and would not provide a perceptible environmental benefit. Installing Selective Catalytic Reduction (SCR) technology would prompt a 20 to 30 percent rate increase for Minnkota cooperatives.

A public hearing on the reconsideration of North Dakota's regional haze plan was held May 15 at the North Dakota Department of Health Environmental Training Center in Bismarck.

"We believe the EPA made a sound decision in March 2012 when it properly identified the right technology for the Young

Station," said Mac McLennan, Minnkota president & CEO. "It was the right thing for North Dakota and the consumer."

Comments on the issue must be received on or before June 17. A listing of the ways in which you can submit comments is included in this issue. Please consider taking a moment to call or write the EPA and let them know the SIP is the correct decision for Red Lake Electric Cooperative, Minnkota, the state of North Dakota and consumers in Minnesota and North Dakota.

The EPA and other agencies have been monitoring visibility in national parks and wilderness areas since 1988. In 1999, the EPA announced a major effort to improve air quality in those areas. The Regional Haze Rule calls for state and federal agencies to work together to improve visibility in 156 national parks and wilderness areas.

North Dakota Gov. Jack Dalrymple and the state's congressional delegation were pleased with the March 2012 ruling by the EPA. Rather than a costly federal plan, the agreement provides North Dakota with flexibility to implement cost-effective standards for improving visibility in selected areas of the state such as Theodore Roosevelt National Park.

North Dakota's delegation remains committed to affirming the state's ability to manage its own implementation plan, citing the state's longstanding commitment to meeting all Clean Air Act requirements, and significant progress the state has already made in reducing regional haze.

Since 2006, Minnkota has spent more than \$425 million on emission control equipment at the Young Station.

*See page 3*



## Report from the Office

by Shirley Bregier

## Online bill pay service

Red Lake Electric is pleased to offer you a new way to pay your electric bill. Bill4U offers you the option to view your electric bill online and allows you to pay with an electronic check or pay from your savings account if you choose. This new online bill service is available on our website [www.redlakeelectric.com](http://www.redlakeelectric.com).

Simply click...



in the What's New column on the home page and follow the prompts to set up an account. You will be able to set up your own signon id and password. Once you have your account set up you will also have access to graphs showing your daily electric usage history and average temperatures. You can also do kilowatt-hour (kWh) usage comparisons. You can choose to continue to receive a paper bill in the mail or go paperless. Once you have set up a Bill4U account you will receive an e-mail notice when your billing statement is ready online. Your electric statements starting from January of 2013 will be stored and available for you at any time. This is a great service for those that would rather not send a paper check in the mail and want to make a payment for your electric bill on a date of your choice. Remember if your bill isn't paid in full on or before

the 5th of the month a late charge will apply. You will also be able to sign up for Auto Pay at this site.

Auto Pay is still the most convenient way we have to accept your payment. To use this feature you only need to sign up once. The amount of your electric bill will be withdrawn from your bank account on the 5th of each month. This is free, no postage and no matter where you are you know your bill is paid on time. If you are already an Auto Pay customer you can set up the Bill4U account to use the kWh usage graphs and go paperless.

You can still send a check along with your bill by mail to PO Box 430, Red Lake Falls MN 56750. You can also bring your bills in person to 412 International Drive, Red Lake Falls MN or put your payment in (6402006.03 Lon Vettleson) one of the drop boxes either at the front door or drive by drop box in the parking lot.

Budget billing is another feature Red Lake Electric offers our residential customers to help even out your electric bills for the year. If you don't like to budget around the higher electric bills you have during the winter months, budget billing may be of interest to you. Here is how it works. Your usage for the previous 12 months will be averaged and calculated based on the current electric rate to get your monthly budget payment amount. Your budget billing

will start in May so your account will start to build a credit balance over the summer months so when the larger bills arrive with the cold next winter you have a balance available to even out those bills. We will review your account every 6 months to compare your actual energy usage costs to your budget amount. If there is a significant difference, we will adjust your monthly amount up or down accordingly. The electric bill you receive each month will continue to show your actual monthly usage and billing calculations to allow you to also monitor your electric bill. If at any time you notice a significant difference you can call and ask us to review your account and reevaluate your budget amount. Keep in mind that we normally want you to build up a credit over the summer months. If you enroll in budget billing it works real well with our auto pay program where we automatically deduct the amount of your electric bill from your banking account on the due date. These have been great programs for those who have enrolled.

Give it a try! You can opt out at any time if it doesn't work for you.

If you want to enroll in either of these or if you have a comment or concern you can e-mail us at [redlake@minnkota.com](mailto:redlake@minnkota.com) or call our office at 253-2168 or 1-800-245-6068. Till next time - Remember SAFETY FIRST!



A call to Gopher State will get all utility underground lines and pipes located and marked, FREE of charge, within 48 hours.

## Call Before You Dig

Red Lake Electric Cooperative members and area contractors are reminded, if you are planning to dig deeper than one foot, you must call Gopher State One Call - it's the law!

With the arrival of spring, many people have plans for digging and planting projects. To ensure your safety and the safety of others, before digging or planting, call Gopher State One Call.

# 1-800-252-1166



**Red Lake Electric Cooperative, Inc.**

*One of the Minnkota Power Systems*

## Things you should know about your electric service

### BILLINGS AND COLLECTION

You will receive your energy bill on or near the 20th of each month.

Payment of your monthly energy bill is due on the 20th of the month. You may pay your bill in person at RLEC during office hours, use the 24-hour drive-up drop box located next to the RLEC office, by Auto Pay, or by mail. Payment must be in the office, drop box, Auto Pay, or in the mail, as evidenced by the postmark, by the 5th day of the following month to avoid a late payment charge. A 1 1/2% monthly late payment charge will be computed on delinquent energy bills, the minimum late payment charge will be \$1.00.

If your payment is not received by the 15th of the month, a final notice of disconnection statement will be included on your following bill. The final notice statement will notify you when your electric service will be disconnected if the delinquent amount remains unpaid. If an employee is sent to disconnect your electric service, a \$60 collection fee will be charged to your account, even if you pay the collector.

To have a disconnected service reconnected, all amounts owing, a \$60 reconnection fee, and a security deposit must be paid. If the service must be reconnected after normal working hours, a \$120 reconnection fee must be paid.

### BAD CHECKS

A \$15 charge will be levied each time a check is returned because of nonsufficient funds, account being closed or payment stopped.

### OUTAGES

In case your electricity goes out, please do the following:

1. Check your fuses or breakers at the yard pole or meter pedestal.
2. Call your neighbor to see if they are out of electricity also.
3. Call the RLEC office (218-253-2168 or 1-800-245-6068) during working hours or 218-253-2200 after hours. We will accept collect calls for outages only.

### METER TESTS

RLEC has a schedule in place to have its meters periodically tested for accuracy. Results from these tests show that meters generally slow down with age; however, if you think that your meter is recording too much usage, RLEC will test it for accuracy. You must pay a test fee in advance of the test. If the meter test shows that the meter was inaccurate, the test fee will be refunded to you.

### STOPPED METERS

If you find your meter has stopped and you are using electricity, please contact the office immediately so we can replace it. Average consumption will be billed to the member for the time the meter was stopped so there is no advantage in not reporting a stopped meter.

### METER READINGS

An automated meter reading system is utilized to obtain monthly meter readings. Although the system is normally reliable, there is always a chance that the correct reading has not been transmitted to the office for billing. Customers should periodically read their meter and compare it to the reading on the billing statement. If the actual reading is not close to the billing statement reading, please call the office.

### GENERAL SERVICE RATES

Facilities charge variable \$27 to \$35 month  
April-December . . . . . 9.5¢ Kwh  
January-March . . . . . 9.9¢ Kwh  
Multiphase users add \$22/month cost of service charge.

Standby, \$12/month (meter disconnected but the power line retained; standby is not available on services larger than 15 KVA transformer capacity).

Security light: high pressure sodium, \$8/month; mercury vapor, \$9/month; water heater flat credit, \$7/month (January-April billing); off-peak equipment charge, \$5.50/month per heat meter; off-peak energy rate: 5.5¢/kWh long-term control, 7.5¢/kWh short-term control.

## Mission Statement

It is the mission of Red Lake Electric Cooperative to enhance the quality of life for people of our service area by consistently providing quality electric service and other valued services while holding our employees, our community and our environment in high regard.



**Red Lake Electric Cooperative, Inc.**

*One of the Minnkota Power Systems*

## RED LAKE ELECTRIC COOPERATIVE, Inc. VOLTS & JOLTS

(USPS 663-400)

Published monthly by the Red Lake Electric Cooperative, Inc., 412 International Drive SW, Red Lake Falls, Minnesota 56750-0430, in the interest of its members and others. Periodical Postage Paid at the U. S. Post Office in Red Lake Falls, Minnesota 56750. POSTMASTER, SEND ADDRESS CHANGES to Volts & Jolts, c/o Red Lake Electric Cooperative, Inc., P. O. Box 430, Red Lake Falls, Minnesota 56750-0430. E-mail: [redlake@minnkota.com](mailto:redlake@minnkota.com)

### OFFICERS AND DIRECTORS

PRESIDENT . . . . . Bonnie Christians  
VICE PRESIDENT . . . . . Robert Finstad  
SECRETARY-TREASURER . . . . . Mark Hanson  
DIRECTORS . . . . . Kelly Lundeen,

Steven Linder, Peter Mosbeck,  
Colette Kujava, Randy Versdahl,  
Stacy Blawat

**Subscription Rate \$2.50 per year**

## NOTICE

Hidden within the text of the articles of this issue of the Volts & Jolts are the names and account numbers of some RLEC members. They will appear within the articles in parenthesis as such (9999999.99 Roger P. Member). If you find your name and account number, clip it out and send it with your next payment. You will be credited with \$5 on your electric bill.



# Recipe Corner



## Ranch Potatoes

8 to 10 medium potatoes, peeled and cut into 1/2-inch cubes  
1 can (10-3/4 ounces) condensed cream of mushroom soup, undiluted  
1-1/4 cups milk  
1 envelope ranch salad dressing mix  
1-1/4 cups shredded sharp cheddar cheese, divided  
Salt and pepper to taste  
6 bacon strips, cooked and crumbled  
Place potatoes in a saucepan and cover with water. Bring to a boil; cook until almost tender, about 10 minutes. Drain; place in a greased 13-in.x9-in.x2-in. baking dish. Combine soup, milk, salad dressing mix, 1 cup cheese, salt and pepper; pour over potatoes. Top with bacon and remaining cheese. Bake uncovered at 350° for 25-30 minutes or until potatoes are tender. **Yield:** 10 servings.

## Baked German Potato Salad

12 medium red potatoes (about 3 pounds)  
8 bacon strips  
2 medium onions, chopped  
3/4 cup packed brown sugar  
1/3 vinegar  
1/3 cup sweet pickle juice  
2/3 cup water, divided  
2 teaspoons dried parsley flakes  
1 teaspoon salt  
1/2 to 3/4 teaspoon celery seed  
4-1/2 teaspoons all-purpose flour  
In a saucepan, cook potatoes until just tender; drain. Peel and slice into an ungreased 2-qt. baking dish; set aside. In a skillet, cook bacon until crisp; drain, reserving 2 tablespoons drippings. Crumble bacon and set aside. Saute onions in drippings until tender. Stir in brown sugar, vinegar, pickle juice, 1/2 cup water, parsley, salt and celery seed. Simmer, uncovered, for 5-10 minutes. Meanwhile, combine flour and remaining water until smooth; stir into onion mixture. Bring to a boil. Cook and stir for 2 minutes or until thickened. Pour over potatoes. Add bacon; gently stir to coat. Bake, uncovered, at 350° for 30 minutes or until heated through. **Yield:** 8-10 servings.

## Broccoli Corn Bread

1 cup plus 1 tablespoon cornmeal, divided  
1/3 cup all-purpose flour  
1-1/2 teaspoons baking powder  
3/4 teaspoon salt  
1/4 teaspoon baking soda  
5 eggs, beaten  
1 package (10 ounces) frozen chopped broccoli, thawed and drained  
1-1/2 cups (6 ounces) shredded cheddar cheese  
1-1/2 cups(12 ounces) small-cured cottage cheese  
1 medium onion, chopped  
3/4 cup butter or margarine, melted  
In a bowl, combine 1 cup of cornmeal, flour, baking powder, salt and baking soda. In another bowl, combine the eggs, broccoli, cheeses, onion and butter. Add to cornmeal mixture; mix just until moistened. Sprinkle remaining cornmeal in a greased 13-in. x 9-in. x 2-in. baking pan. Pour batter into pan. Bake at 350° for 30-40 minutes or until a toothpick inserted near the center comes out clean. Serve warm. **Yield:** 12-15 servings.

## Colorful Oven Vegetables

1/3 cup butter or margarine  
1/2 teaspoon dried thyme  
1/4 to 1/2 teaspoon salt  
1/4 teaspoon pepper  
3 cups cauliflowererets  
2 cups broccoli florets  
6 medium carrots, julienned  
3 small onions, quartered  
Place butter in a shallow 3-qt. baking dish; place in a 400° oven for 5 minutes or until melted. Stir in thyme, salt and pepper. Add the vegetables and toss to coat. Cover and bake for 25-30 minutes or until the vegetables are crisp-tender. **Yield:** 10-12 servings.  
**Editor's Note:** 2 cups baby carrots may be substituted; cut into juli- enne strips.

## Lemony Chicken Fruit Salad

2 cans (8 ounces each) pineapple chunks  
1 medium apple, diced  
3 cups cubed cooked chicken  
1 cup seedless grapes, halved  
3 tablespoons butter or margarine  
3 tablespoons all-purpose flour  
1/4 cup sugar  
1 teaspoon salt  
1/2 cup lemon juice  
2 egg yolks, lightly beaten  
1/2 cup whipping cream  
Lettuce leaves  
1/2 cup slivered almonds, toasted  
Drain pineapple, reserving the juice. Set aside pineapple and 1/2 cup juice. Toss remaining juice with apple; drain. In a large bowl, combine chicken, grapes, pineapple and apple. Cover and refriger- ate. In a saucepan, melt butter. Stir in flour, sugar and salt until smooth; gradually add lemon juice and the reserved pineapple juice. Bring to a boil; boil and stir for 2 minutes. Reduce heat. Add a small amount to egg yolks; return all to pan. Bring to a gentle boil; cook and stir for 2 minutes. Remove from the heat; chill for 10-15 min- utes. Beat whipping cream until stiff peaks form; fold into cooled dressing. Pour over chicken mixture; gently stir to coat. Chill for 1 hour. Serve in a lettuce-lined bowl. Sprinkle with slivered almonds. **Yield:** 6-8 servings.

## Lemony Marinated Vegetables

Uses less fat, sugar or salt. Includes Nutritional Analysis and Diabetic Exchanges.  
1 cup fresh brussels sprouts  
1/2 pound carrots, cut into 1/2-inch slices  
3 cups cauliflowererets  
1-1/2 cups broccoli florets  
3 tablespoons lemon juice  
2 teaspoons vegetable oil  
2 teaspoons minced fresh parsley  
1 garlic clove, minced  
1 lemon peel strip, 2-1/2 inches x 1/2 inch  
1/2 teaspoon dried oregano  
1/2 teaspoon dried basil  
1/2 teaspoon salt, optional  
1/8 teaspoon pepper  
2 cups cherry tomatoes  
Place brussels sprouts and carrots in a large saucepan; add 1 in. of water. Bring to a boil; cook for 3 minutes. Add cauliflower and broccoli; return to a boil. Cook for 5 minutes or until vegetables are crisp-tender. Rinse in cold water; drain. In a large bowl, combine lemon juice, oil, parsley, garlic, lemon peel, oregano, basil, salt if desired and pepper. Add cooked vegetables and the tomatoes; toss to coat. Cover and refrigerate for at least 8 hours. Discard lemon peel. **Yield:** 6-8 servings. **Nutritional Analysis:** One 1-cup serving (prepared without salt) equals 50 calories, 39 mg sodium, 0 choles- terol, 9 gm carbohydrate, 2 gm protein, 1 gm fat. **Diabetic Exchange:** 2 vegetable.

## Send comments to keep regional haze sip for the young station

If you want to send a com- ment to the EPA, stop by Red Lake Electric Cooperative's office at 412 International Dr. SW, Red Lake Falls and sign a form. We will deliver them to the EPA in person if there is a public hearing. If not, we will mail them to the EPA. Deadline for (7608002.01 Forrest Giannomatti) comments is June 17.  
Or submit comments, identi- fied by Docket ID No. EPA- R08-OAR-2010-0406, by one of the following methods:  
• Web: <http://www.regula- tions.gov/>. Follow the online instructions for submitting com- ments.  
•Email: [r8airrulemak- ings@epa.gov](mailto:r8airrulemak- ings@epa.gov).  
• Fax: (303) 312-6064 (please alert the individual listed in the FOR FURTHER INFOR- MATION CONTACT section if you are faxing comments).  
• Mail: Director, Air Program, Environmental Protection Agency (EPA), Region 8, Mailcode 8P-AR, 1595 Wynkoop Street, Denver, Colorado 80202-1129.

## Red Lake Electric Cooperative, Inc. Operating Report MONTHLY COMPARISON

	MARCH 2012	MARCH 2013
Total Revenue .....	\$1,309,986	\$ 1,268,078
Total Margins .....	\$ 278,891	\$ 291,453
Cost of Power .....	\$ 855,182	\$ 865,263
KWH's Purchased .....	12,029,557	12,878,799
Capital Credits Paid to Estates ..\$	4,952	\$ 4,169

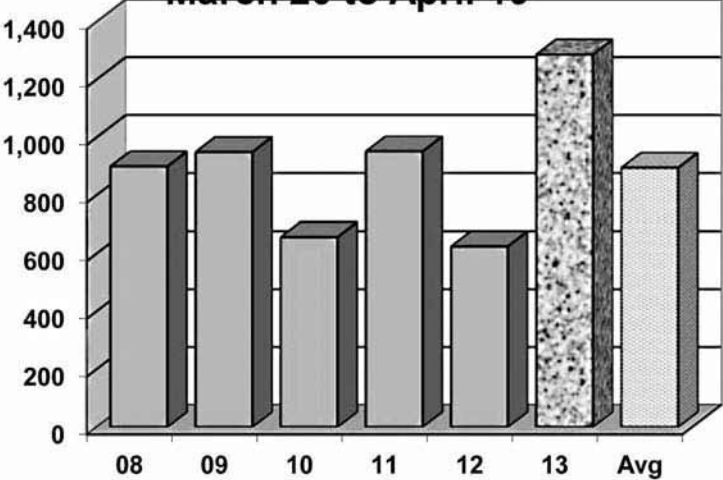
## YEAR TO DATE COMPARISON

	MARCH 2012	MARCH 2013
Total Revenue .....	\$4,217,853	\$ 4,365,970
Total Margins .....	\$ 624,549	\$ 828,659
Cost of Power .....	\$2,860,564	\$ 2,891,742
KWH's Purchased .....	42,813,705	45,854,968
New Service Connections .....	2	7
Customers Served .....	5,216	5,216
Capital Credits Paid to Estates ..\$	17,219	\$ 39,666
Miles of Line		
Overhead .....	2,324	2,323
Underground .....	254	256

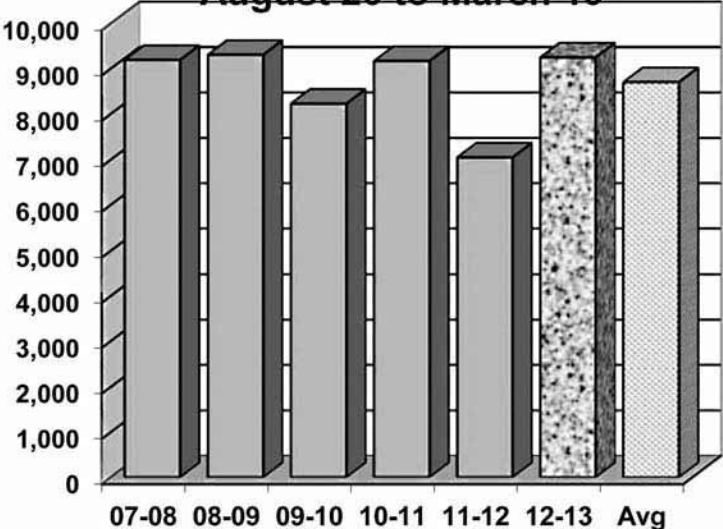
## DEGREE DAYS

To determine degree days, you must calculate the daily mean temperature for the time period you are measuring. Degree day computation is based on the assumption that a building does not require any heat if the outside temper- ature averages 65 degrees during a 24-hour period. To obtain a degree day figure, the high temperature and the low temperature for the day are added and the total divid- ed by two. That figure is then subtracted from 65. For example, if the high temperature was 30 degrees and the low temperature 10 degrees, the figure would be 30+10=40; 40/2=20; 65-20=45. This would be a 45-degree day. The higher the degree day figure, the more heat required to warm your home.

### DEGREE DAYS March 20 to April 19



### Year To Date August 20 to March 19



Dear RLEC,

Thank you for the interesting annual meeting, delicious meal and belt sander that I won.

The employees and board members did an excellent job of serving and cleaning up after the dinner

Cal Harmoning  
Red Lake Falls

Dear RLEC,

I want to thank you for the copy of the DVD that was shown at the Annual Meeting. It will make a wonderful keep sake.

Sincerely,  
Alice Bluemke  
Oklee, MN

Dear RLEC,

I would like to say a big thank you for the George Forman Grill I won at the Annual Meeting. And I also really enjoyed your meeting and the sit down wonderful meal. You need to be commended for what you did.

Thank you again  
Lucille Myers  
T. R. Falls, MN

Dear RLEC,

Congratulations on your 75 Anniversary.

Enjoyed the informative meeting. The wonderful service by the "guys" and the wonderful lunch by the St. Joseph Catholic Church and an extra bonus of winning an electric frying pan.

Thanks so much  
Lois Philipp  
T.R. Falls, MN

Dear RLEC,

The generous community support, past and present, of car- ing people like you helps make our service possible. Thank You! With continued appreciation, Tri-Community Living at Home Program

Darcy Hestekine  
Director  
Newfolden

Dear RLEC,

We appreciated the prompt- ness of your crew responding to our service call need. Would you give them a big thank you.

Brenda and Clay Schindler  
Red Lake Falls

Dear RLEC,

We are so grateful for the operation Round-Up Grant that was awarded to the Family Advocate Program in Thief River Falls. We would also like to thank your members who partici- pate in the Round-up Program. Your participation is truly a gift to many in our com- munities.

April Ballard  
Early Childhood Family Advocate  
Challenger Preschool  
Thief River Falls

Dear RLEC.

On behalf of the Goodridge Area Historical Society we thank you for the Operation Round up money we recieved. It will help with our Centennial in 2015 on the Country School also. Thank you for giving back to our area organizations. Congratulations on your 75 Anniversary and the nice book you sent out. It was great.

Margie Coan  
Secretary-Treasurer  
Board & Members  
Goodridge Area Historical Society

Dear RLEC,

Thank you so much for sup- porting Early Childhood Family Education and Head Start in our area. We appreciate your sup- port for our programs and know that many families benefit from your funding. On April 16, dur- ing the "Week of the Young Child," we were able to have Jack Pearson perform for our communities with a concert in Brooks. Many children enjoyed his songs, stories, and musical style. Thank you again for everything you do!

Plummer, Oklee, Win-E- Mac and Red Lake Falls  
Early Childhood

Dear RLEC,

To the crew who worked on restoring the electrical service on Sunday night, April 14 in the cold, windy, slushy weather.

Thank you!  
Toni Epema  
McIntosh, MN

## Turn your junk into cash!

www.luckentrucks.com

State certified scale  
get paid what you deserve

Car Crushing & Tin Bailing  
Lugger & Container Services

We buy anything from cars to combines, including the kitchen sink and every- thing in between...

We want your scrap!

- Prepared Steel
- Unprepared Steel
- Unstripped Motors
- Tin
- Car Bodies
- Batteries
- Brass
- Alum. Trans.
- Radiators
- Die Cast
- Stainless Steel
- Aluminum
- Copper
- Lead

You call. We haul.  
Call 1-800-874-4107

\$\$\$ Cash \$\$\$ Cash \$\$\$ Cash \$\$\$

Lucken Corp.

23125 430th St. SE, Winger, MN 56592  
jeff@luckentrucks.com or john.lucken@luckentrucks.com

## Closed Memorial Day

In respectful remembrance,  
Red Lake Electric Cooperative's  
headquarter facilities will be closed  
Monday, May 27  
in observance of Memorial Day.

In case of an electrical outage  
or emergency, dial the after-hour  
phone number 218-253-2200.

May we all remember those  
who have gone before us,  
especially those who have sacrificed  
their lives for our freedom.



**In this moment ...**

It doesn't matter if you saved money in 15 minutes.

It doesn't matter if your neighbor has the same insurance you do.

What matters right now is the quality of your independent insurance agent and the company that stands behind them.

Auto-Owners Insurance is "Highest in Customer Satisfaction with the Auto Insurance Claims Experience, Five Years in a Row" according to J.D. Power and Associates.

**Call or visit us today!**  
Red Lake Falls, MN  
218-253-2177 • [rlci@gvtel.com](mailto:rlci@gvtel.com)  
[www.redlakecountyinsurance.com](http://www.redlakecountyinsurance.com)

**Auto-Owners Insurance**

12780 (11-12)



## Farmers Union Oil Company

Thief River Falls 218-681-3512



- Fertilizer
- Petroleum products
- Town and country deliveries
- Tires, batteries, accessories
- Farm supplies

## WILCOX PLUMBING AND HEATING, Inc.

RED LAKE FALLS

Plumbing/Heating/Air conditioning

BILL H. MOSER, Master Plumber  
License No. 1770PM  
BILL J. MOSER, Master Plumber  
License No. 6039PM  
JASON JOHNSRUD, Master Plumber  
License No. 064717PM  
Refrigerant Certified No. CFR089400285



- In-floor heating • Oil furnaces
- Pressure systems • Gas furnaces
- Electric heat pumps

FREE ESTIMATES  
COMPLETE SALES  
AND SERVICE

218-253-4347

## The Head-Quarters Hair and Tanning Salon

HAIRSTYLING  
FOR MEN AND  
WOMEN

PARK PLACE MALL  
RED LAKE FALLS, MINNESOTA

218 253-4223

## Security STATE BANK



- Operating loans
- Vehicle loans
- Farm real estate loans
- Consumer loans

"We appreciate your business."

218-796-5157  
Fax 218-796-5158

anthony.holthusen@ssboklee.com



"THE FARMERS' HELPING HAND"

## Dave Miller Agency

DAVE MILLER, AGENT  
RURAL ROUTE 1  
VIKING, MINNESOTA 56760



- All-Risk Crop Insurance
- Crop/Hail Coverage

218-523-5861

## VOLTS AND JOLTS FEATURE OF THE MONTH

# The Shed - A family tradition

The Shed, owned and operated by Allie Enge, is a unique shop featuring both new and repurposed items. Located just three miles east of Thief River Falls, Minn, on Minnesota State Highway 1, The Shed has a long history of providing shoppers with an array of interesting merchandise.

It was started over twenty years ago by Silas and Marge Hanson, who are grandparents to Allie's husband, Aaron. The Hansons operated the store as an antique shop for many years until Silas passed away four years ago.

Owning The Shed was not in the Enges original plan. The couple had always planned to move into the home on the same property as The Shed, but the building was never planned to be a business, but rather a space for their kids to visit with friends, possibly outfitted with couches and a pool table. When the family did move into the home on the property, The Shed found a different purpose.

In 2010, while working at Digi-Key, Allie suffered a major stroke and was airlifted to Grand Forks, N.D. Although she intended to return to work, her progress in rehabilitation diminished and she ended her employment. One of the things she found difficult during her rehab was following directions, so she began to quilt complicated patterns. She even posted many pictures of the finished pieces on Facebook to share her accomplishments with others. The response from friends and family was very encouraging. Her aunt Renae, whom Enge also considers one of her best friends, called and told her, "Allison this is your chance to do something you have always wanted to do." Enge explains, "I remember hanging up the phone and thinking, 'that's fine, but I still have bills to pay.'" She goes on to say that the beginning of The Shed as a possibility of a business for her really started with the quilting.

After Silas passed away, Marge contacted Allie about opening The Shed for one last summer before auctioning off the remaining items, as she needed the help running the place. The pair worked to ready the store for opening weekend and it was during that time



Allie, Hannah and Nolan

Allie had a realization, "It was then I started dreaming about the place that I knew that I wanted it to be," she says, "I knew I wanted to change it up, but I wanted to keep the integrity that they built. I still carry some antiques, but I also wanted to carry the new with the old. I wanted my business to carry something for everyone."

The Shed was open that summer and had a large antique auction that fall. Allie held back several of her favorite antique pieces to use within the store for display and nostalgia. The building was renovated and now features a counter, built from repurposed pieces of an old granary, that shows markings from farmers dating back to the 1900s.

Although she did originally sell her quilted projects in the store, Allie has found that she no longer has time to complete the projects due to the other demands of the business. Much of her time is spent finding or repurposing items for the store. "I consider myself a picker," she says, "I receive calls daily from people saying that they have some junk for me to look at or have an abandoned barn that may have some things that I may be interested in. I now consider my office to be my Ford pickup, the highway, and a pair of work gloves." She has over 30 local vendors that supply unique merchandise for the store, such as candles and yard furniture.

"There is so much local talent here," she says, "It's nice to showcase what people around here make." Allie also purchases some wholesale products. The store also features repurposed items to give old, and often discarded, items new life, such as old wooden doors made into corner shelves and tables. Customers can peruse antiques, jewelry, purses, home décor and furniture, among other things.

Last year they added a greenhouse, which they call The Potting Shed. The main greenhouse is located at the farm of Rodney and Cheryl Bjerklie, Allie's parents, north of Gully, Minn. while they also maintain a greenhouse next to The Shed.

Allie enjoys the fact that she gets to work with her family, and that they work together well. She also likes to meet and interact with her customers and vendors. Hannah agrees. "I like to meet the cus-

tomers," she says. Allie still gets some of Silas and Marge's customer's from when they owned the place, and is glad they still stop by to visit her and the shop.

Allie is quick to point out that family has made The Shed what it is today. "Family keeps this place together," says Hannah. While Allie is mainly responsible for the business, her husband, Aaron and their children, Hannah, 13, and Nolan, 8, have all helped. Hannah can often be found behind the register while Nolan waters the plants in the greenhouse and even made a Russian tea mix that he sells in the store.

"That is really the key to the success of The Shed, the love and support of my family," Allie says, "Family and friends have just shown up without us even asking to pitch in. Whether it be for them to carry a plant, or help build another greenhouse. Yesterday when we were working my aunt Renae made the comment, 'Some families go on a cruise to spend time together, we work'. No matter what, they are always there to help each other out."

The Shed is open from the end of April through Christmas Eve each year. In May and June it is open seven days a week. July through December 24th it is open Wednesday through Sunday. The hours are noon to six on weekdays, ten to four Saturdays and noon to four on Sundays. Allie is quick to remind customers that if you would like to shop at a different time, "We live here, stop in!" The Potting Shed north of Gully is open nine to nine, Monday through Saturday, and noon to nine on Sundays.



## Bray-Gentilly Mutual Insurance Co.

Locally Owned and Operated  
Serving Policyholders Since 1900

218-683-3200

2017 Hwy. 59 SE • P.O. Box 592  
Thief River Falls, MN 56701

INSURANCE FOR  
FARMS, HOMES  
AND PERSONAL  
PROPERTY

TELEPHONE US FOR AN  
AGENT NEAR YOU!

THIS SPACE  
FOR RENT  
253-2594

## Kilen's Custom Cleaners

- Commercial
- Residential
- Custodial



Specializing in  
Water, Fire & Soot Restoration

Jordan Kilen - Owner  
(218) 686-2591

www.kilencustom.com

Free Estimates

"Achieving excellence  
one customer at a time"

## Want to cut your heating cost by up to 50%?

Buy a YORK Affinity  
heat pump today!



## GROVE MECHANICAL, INC.

Your hometown heating &  
air conditioning team!  
Serving Crookston and the surrounding  
communities for 30 years.  
(218) 281-3863

OFFICE PHONE  
253-2168

OUTAGE PHONE  
253-2200

1-800-245-6068



Red Lake Electric  
Cooperative, Inc.

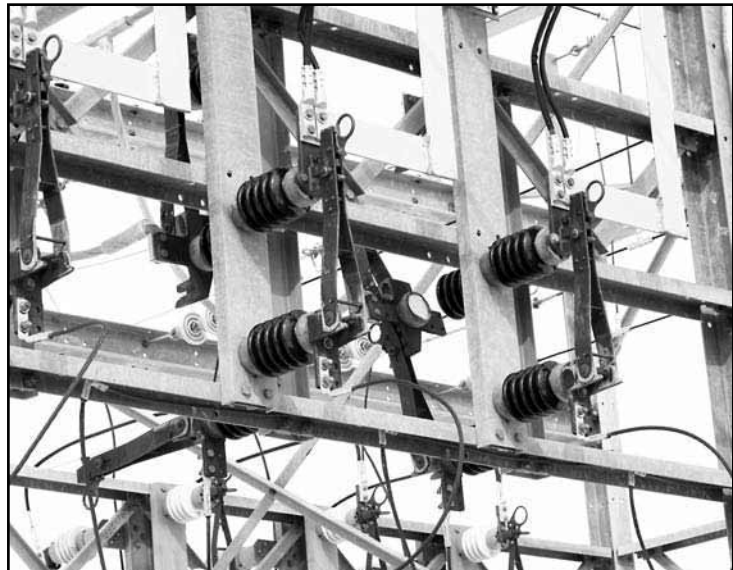
One of the Minnesota Power Systems



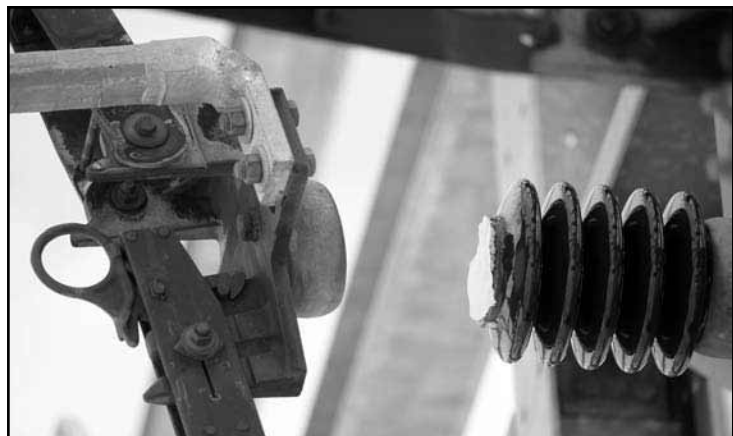
# Broken insulator causes Dakota substation outage

On March 27, Minnkota Power Cooperative found a broken insulator on one of the regulator bypasses in the Dakota substation NE of Thief River Falls. The next day the substation was taken out of service so the insulator could be replaced. Red Lake Electric Cooperative line crews rerouted electrical

feeds and closed in two-way feeds to minimize the number of accounts that would be without electric power during the substation outage. Of the 925 accounts fed by the substation only 61 were without service. The change out of the insulator resulted in a 45 minute outage for those 61 accounts.



A broken insulator on one of the regulator bypasses required the Dakota substation to be out of service 45 minutes on March 27.



A close up of the broken insulator.

## Informational Web Sites

The following is a list of Web sites that can provide information and education in reference to electrical safety and energy conservation. These Web sites are listed as links on Red Lake Electric Cooperative's Web site at [www.redlakeelectric.com](http://www.redlakeelectric.com).

- Electrical Safety Foundation International: [www.esfi.org](http://www.esfi.org)
- Alliance to Save Energy: [www.ase.org](http://www.ase.org)
- US Environmental Protection Agency: [www.epa.gov/greenhomes](http://www.epa.gov/greenhomes)
- Energy Star: [www.energystar.gov](http://www.energystar.gov)
- Minnesota Safety Council: [www.minnesotasafetycouncil.org](http://www.minnesotasafetycouncil.org)
- Safe Electricity: [www.safeelectricity.org](http://www.safeelectricity.org)
- Lighting Controls Association: [www.aboutlightingcontrols.org](http://www.aboutlightingcontrols.org)
- US Consumer Product Safety Commission: [www.cpsc.gov](http://www.cpsc.gov)



Red Lake Electric lineman, Brett Knott uses a fiberglass stick to open every blade on every breaker in the Dakota substation when the substation was taken out of service. There are five circuits each with a three phase breaker requiring 15 blades to be opened.



Once the substation was de-energized and everything ground out, Minnkota Power Cooperative line personnel changed out the broken insulator.



This is one of several two-way feed poles that were closed during the Dakota substation outage in order to minimize the number of accounts to be without electrical service. Red Lake Electric apprentice lineman Aaron Derosier uses an extendo stick to open the feeds once the substation was re-energized.

Minnkota personnel took advantage of the substation outage and changed out the high-side fuses in the substation. These fuses are part of an on-going maintenance program and are taken out of service every 10 years to be tested.



Joel Kezar, Owner  
Milo Ballingrud, Sales

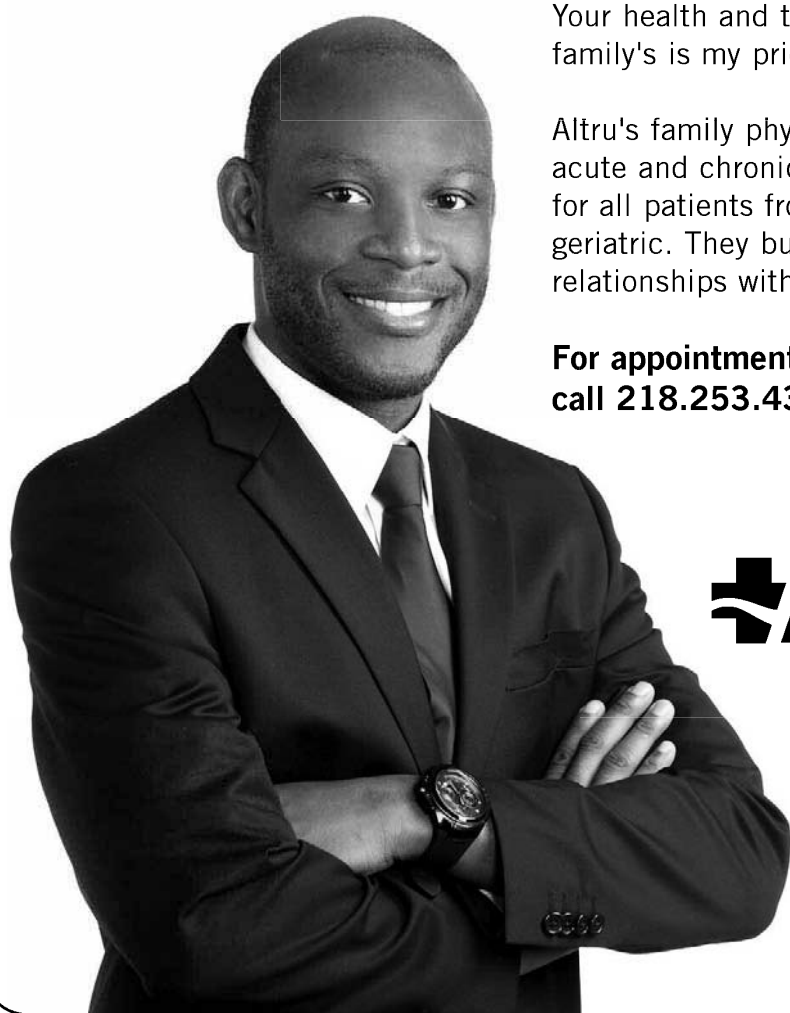
Store Hours: Monday-Friday 8 A.M. - 6 P.M. Saturdays 10 A.M. - 5 P.M.

Buy • Sell • Trade • Rentals  
New & Used Instruments  
Repairs • Sound & Lighting • Installations  
Recording Studio • Lessons • Print Music

315 Duluth Avenue N. Thief River Falls 681-2148 • 1-800-566-2148  
[kezarmusic@mncable.net](mailto:kezarmusic@mncable.net) [www.kezarmusic.com](http://www.kezarmusic.com)

Like us on Facebook

**Olumide Ajayi, MD, family medicine, pediatrics, and obstetrics, is currently seeing patients at Altru Clinic in Red Lake Falls.**



Your health and that of your family's is my priority.

Altru's family physicians treat acute and chronic illness and care for all patients from birth to geriatric. They build trusting relationships with their patients.

For appointments with Dr. Ajayi, call 218.253.4343.



By working together,  
we all get better.

[altru.org/ajayi](http://altru.org/ajayi)

## We can help with a WET BASEMENT

### Book now for

# 10% off

## Carpet Cleaning

**Great for graduation, Christmas, birthdays, Thanksgiving**

**Free Estimates  
in NW Minnesota  
Satisfaction  
Guaranteed**



## Kilen's Custom Cleaners

Achieving Excellence One Customer At A Time

**(218) 681-3911**

**[www.kilenscustom.com](http://www.kilenscustom.com)**



Power Savers program incentives available  
Continued from front page

2013 Business Incentives		
Heating, Ventilation Air Conditioning (HVAC) Measures		
Air Conditioning Tune-up – Rooftop Units (RTUs)		\$50/ton
Central Air Conditioning Tune-up – Split Systems	<5 tons	\$50/ton
Packaged Terminal Air Conditioning	Minimum efficiency (EER) calculation: 12.8 EER – (.213 x BTUH/1,000) <i>All sizes</i>	\$35/ton
Split System Air Conditioning	<65,000 BTUH, <5.4 tons (Single phase - 14 SEER 3 phase - 12 EER)	\$30/ton
	65,000 – 135,000 BTUH 5.4 – 11.3 tons, 11 EER	\$40/ton
	136,000 – 240,000 BTUH 11.4 – 20 tons, 10.8 EER	\$40/ton
	241,000 – 760,000 BTUH 20.1 – 63.3 tons, 9.8 EER	\$40/ton
	>760,000 BTUH >63.3 tons, 9.3 EER	\$40/ton
Unitary Single Packaged Air Conditioning (including RTUs)	65,000 BTUH, <5.4 tons Single phase - 14 SEER 3 phase – 11.3 EER	\$30/ton \$50/ton
	65,000 – 135,000 BTUH 5.4 – 11.3 tons, 11 EER	\$50/ton
	136,000 – 240,000 BTUH 11.4 – 20 tons, 10.8 EER	\$50/ton
	>241,000 – 760,000 BTUH >20.1 – 63.3 tons, 10 EER	\$50/ton
	>760,000 BTUH >63.3 tons, 9.8 EER	\$50/ton

ENERGY STAR® (ES) Window and Wall (Sleeve) Air Conditioning (AC)	ES Window AC <14,000 Btu/hr. ES Window AC >14,000 Btu/hr. ES Sleeve AC <14,000 Btu/hr. ES Sleeve AC >14,000 Btu/hr.	Must meet ENERGY STAR standards	\$35/unit \$70/unit \$35/unit \$70/unit
Furnace/Air Handler with Electronically Commutated Motor (ECM)	Attach spec. sheet or other manufacturer provided document clearly indicating the presence of ECM.		\$150/ unit
New residential style/air handler installations only. Unit must be equipped with an ECM as original equipment air handler.			
Mini-Split Air-Source Heat Pump (ASHP)	Unit must be rated a minimum of 15 SEER and be on a list of prequalified units.		\$500/ unit
Single Package ASHP (including rooftop units)	65,000 BTUH, <5.4 tons (Single phase - 14 SEER; 3 phase - 11.3 EER)		\$30/ton
	65,000 – 135,000 BTUH 5.4 – 11.3 tons, 10.6 EER		\$25/ton
	136,000 – 240,000 BTUH 11.4 – 20 tons, 10 EER		\$35/ton
>240,000 BTUH >20 tons, 9.1 EER			\$35/ton
Split System ASHP	<65,000 BTUH, <5.4 tons (Single phase - 14 SEER; 3 phase - 12 EER)		\$30/ton
	65,000 – 135,000 BTUH 5.4 – 11.3 tons, 10.6 EER		\$40/ton
	136,000 – 240,000 BTUH 11.4 – 20 tons, 10 EER		\$40/ton
	>240,000 BTUH >20 tons, 9.1 EER		\$40/ton
For split systems, the indoor coil and condenser must be a matched set to be eligible.			

Geothermal Measures		
Ground-Source Heat Pump (GSHP)		
Open Loop <135,000 BTUH @ 59°F	<11.3 tons*, 16.2 EER/3.6 COP	\$200/ton <i>Maximum incentive \$7,500 system</i>
Closed Loop <135,000 BTUH @ 77°F	<11.3 tons*, 14.1 EER/3.3 COP	\$400/ton <i>Maximum incentive \$15,000/system</i>
New Installations only. All efficiency ratings will be verified using the AHRI database (ahrirectory.org).		
*Units >11.3 tons may qualify for incentives if the EER requirement is met. Submit equipment manufacturer and model information for preapproval before equipment is purchased.		
Replacement Geothermal		
GSHP		
Open Loop <135,000 BTUH @ 59°F	16.2 EER/3.6 COP	\$100/ton <i>Maximum incentive \$1,250</i>
Closed Loop <135,000 BTUH @ 77°F	14.1 EER/3.3 COP	\$200/ton <i>Maximum incentive \$2,500</i>
Incentive available for failed geothermal equipment only. Entire indoor unit replacement is required to receive incentive. Replacing only the compressor will not qualify for the incentive. Equipment being replaced must fall outside of any warranty period to receive incentive. Invoice showing proof of purchase must be attached.		
All GSHP incentives must also meet the following criteria: Efficiency ratings will be verified using the AHRI database (ahrirectory.org). Equipment must meet or exceed efficiency requirements as stated above. Heat load calculation required with all geothermal incentive applications submitted clearly delineating a) design temperature used for analysis; b) resulting heat loss; and c) equipment heating capacity required for building. If equipped with backup electric heat, the business must be on load control or demand billing per the member utility's offerings.		
Setback/Programmable Thermostat - \$50/unit; Limited to \$2,500/facility; up to 50% of the unit cost. Qualifying setback/programmable thermostat shall be installed according to manufacturer's specifications and comply with manufacturer's warranty requirements.		

Refrigeration Measures		
Anti-Sweat Heater Control (cooler)	Retrofit only	\$40/door
Anti-Sweat Heater Control (freezer)	Retrofit only	\$100/door
Compressor ECM Fan	Retrofit or new installations	\$25/unit
Condenser ECM Fan	Retrofit or new installations	\$25/unit
ECM Evaporator Fan Motors - Walk-In Coolers/Freezers	Retrofit only	\$40/motor
ECM Evaporator Fan Motors - Reach-In Coolers/Freezers	Retrofit or new installations	\$40/motor
LED Case Lighting	Retrofit or new installations	\$25/door
Low Heat Reach-In Freezer Doors	Retrofit or new installations	\$25/door
Night Covers	Retrofit only	\$8/linear foot
No-Mullion Reach-In Cases	Retrofit or new installations	\$15/door
Replace Open Multi-Deck Reach-In Cases with Glass Door Reach-In	Retrofit only	\$30/linear foot
Vending/Cooling Misers	Retrofit only	\$50/unit
ENERGY STAR® Refrigerator	ENERGY STAR	\$25/unit
ENERGY STAR Refrigerator (with recycling of old refrigerator)	ENERGY STAR	\$50/unit
ENERGY STAR Freezer	ENERGY STAR	\$25/unit
ENERGY STAR Freezer (with recycling of old freezer)	ENERGY STAR	\$50/unit


Lighting – Retrofit (Unless noted, must be used for lighting with a minimum of 1,800 hours of operation per year)		
Compact Fluorescent Fixtures and Lamps (CFL)		
ENERGY STAR® CFL Screw-In Lamps	\$1.50/unit Must be ENERGY STAR approved	Incentive per screw-in self-ballasted lamp
ENERGY STAR CFL Reflector Flood	\$4/unit Must be ENERGY STAR approved	Replace lamp on failure/new construction

LED and Induction Technologies LED Technologies must be ENERGY STAR® or DesignLights Consortium™ approved		
LED Recessed Downlights (complete fixture)	\$25/install	Replace 60-125W incandescent
LED Recessed Downlights (screw-in replacement kit)	\$15/install	
ENERGY STAR LED Screw-In Bulb	\$7/bulb	Replace 40W or greater
LED Exit Sign – New Fixture ≤ 8 Watts	\$12/unit	Replace or retrofit existing sign.  LED Exit Signs shall use 8 Watts or less, including the battery charger when active.  Must meet State Fire Marshal codes and be UL-rated.
LED Automobile Traffic Signal	\$25/lamp replaced	Traffic signals using LED lights must replace conventional signals.
LED Pedestrian Signal	\$22/sign	Pedestrian signals using LED lights must replace conventional signals.

LED Case Lighting	\$25/door	Replacing fluorescent
LED or Induction Fixtures (Garage or Exterior Use)	\$80/unit	Replacing up to 175 Watt HID
	\$100/unit	Replacing 175 Watt to 249 Watt HID
	\$120/unit	Replacing 250 Watt to 400 Watt HID
LED or Induction Fixtures (Exterior Use Only)	\$225/unit	Replacing 750 Watt to 1,000 Watt HID

LED and Induction Technology must be complete fixtures with a total power reduction of 40% or more. Lamp-only replacements are not eligible for incentive.  
LED garage and exterior fixtures should have a minimum efficiency of 35 lumens per watt.

Fluorescent T8 Lamps with Electronic Ballasts		
T8 4ft. Fixture		
1-lamp	\$5/unit	Replace incandescent or T12 systems with T8 systems. Replacement must result in energy savings to qualify.
2-lamp	\$6/unit	
3-lamp	\$11/unit	Replacement fixtures or lamp and ballast retrofits are eligible.
4-lamp	\$13/unit	
T8 8ft. Fixture		
1-lamp	\$7/unit	Retrofits of T12 8' 2-lamp fixtures with four T8 4' lamps placed end to end should be considered a T8 4' 4-lamp retrofit at \$13.
2-lamp	\$9/unit	
T8 8ft. High Output Fixture		
1-lamp	\$12/unit	Retrofits of T12HO 8' 2-lamp fixtures with four T8 4' lamps placed end to end should be considered a T8 4' 4-lamp retrofit at \$13.
2-lamp	\$16/unit	



## Area Electrical Inspectors

Any time an electrical circuit is altered or any new wiring is done, a request for electrical inspection must be submitted to the area electrical inspector.

**Inspectors for RLEC service territory include:**

**Scott Stenvik**  
Marshal and Penn. Counties  
218-689-5406

**Glenn Erickson**  
Pennington County  
218-689-3763

**Robert Orgon**  
Red Lake and Polk Counties  
218-556-3829

**Mark Smythe**  
Beltrami and Clearbrook Counties  
218-751-0487

**Online permits may be filed at:**  
[www.dli.mn.gov/ccld/etrakit\\_electrical.asp](http://www.dli.mn.gov/ccld/etrakit_electrical.asp)

Look up, stay alert during outdoor work, play

As the weather begins warm up, kids and adults alike will soon head outside to perform winter clean-up and play. Before they do, remind them to look up and be alert for power lines and other electrical hazards, the best way to stay safe from electrocution—and even death.

“Here at Red Lake Electric Cooperative, using proper procedures and safety measures is a matter of life and death,” explains Bob Guillemette, Safety Director.

**For kids**

Never fly a kite on a rainy day or anywhere but an open space. A high point in the sky makes a kite a grounding point for lightning, and kites could easily become tangled in power lines.

Don’t climb trees that are near power lines and poles—evergreens can disguise dangers this time of year; leaves during the spring and summer.

Stay far away from power lines lying on the ground. You can’t tell if electricity is still flowing through them. If there’s water nearby, don’t go in it. Water is the best conductor of electricity.

Obeysigns that say “danger” and “keep out” around large electrical equipment, like substations. These signs aren’t

warnings; they’re commands to keep you safe. Never climb a power pole.

**For adults**

If power lines run through your trees, call Red Lake Electric—professional tree trimmers with proper protective equipment can trim branches safely.

Remember that power lines and other utilities run underground, too. Call 811 to have utility lines marked before you start digging.

Starting that winter cleanup yard work? Sweep dried leaves and debris from outdoor receptacles.

If they’re not already, consider upgrading your outdoor receptacles—or any outlets that could come in contact with water—to ground fault circuit interrupters (GFCIs). GFCIs immediately interrupt power flow when a plugged-in device comes in contact with water. Regardless, keep your outlets and cords dry and covered outside.

Use only weather-resistant, heavy-duty extension cords marked for outdoor use. Don’t leave outdoor power tools unattended for curious children or animals to find. For more safety tips and information, visit SafeElectricity.org.

T8 4ft. Lamps and Ballast with Reflectors (Permanent removal of existing ballasts and unused lamp sockets required)		
2-lamp Replacing T12 4ft. 4-lamp	\$25	Replace or retrofit T12 systems with a T8 system using 4' lamps. New fixtures or retrofit kits must be used.
2-lamp Replacing T12 8ft. 2-lamp	\$18	
3-lamp Replacing T12 4ft. 4-lamp	\$18	Design must meet maintained Illuminating Engineering Society (IES) recommended light levels for the area.
Reduced Wattage Fluorescent T8 Lamps Only		
4ft. 28W or less	\$1/lamp	Replace existing 32W 4' or 59W 8' T8 lamps with low watt T8 lamps.
8ft. 54W or less		
Reduced Wattage T8 Fluorescent Systems (CEE qualified only)		
T8 4ft. Reduced Wattage System		
1-lamp	\$7/unit	Replace incandescent or T12 systems with 28 and 25 watt CEE qualified Reduced Wattage T8 Systems. Lamps and ballasts used must meet the CEE specifications for Reduced Wattage T8 Systems.
2-lamp	\$9/unit	
3-lamp	\$13.50/unit	
4-lamp	\$18/unit	
Replacement fixtures or lamp and ballast retrofits are eligible.		
See "Commercial Lighting" at <a href="http://www.cee1.org">www.cee1.org</a> for approved lamp and ballast list. <b>However if the ballast has a NEMA premium label, it automatically qualifies.</b>		

High Performance (Super) T8 Fluorescent Systems (CEE qualified only)		
<b>T8 4ft. High Performance</b>		
1-lamp	\$6/unit	Replace incandescent, T12 systems, or specified standard T8 Systems with CEE qualified High Performance (super) T8 Systems.  Lamps and ballasts used must meet the CEE specifications for High Performance T8 Systems.  Replacement fixtures or lamp and ballast retrofits are eligible.
2-lamp	\$7/unit	
3-lamp	\$12/unit	
4-lamp	\$14/unit	
<b>T8 4ft. High Performance – Replacing Specific Fixtures</b>		
2-lamp	\$8/unit	Replacing T12 8' one lamp fixture – one for one replacement only.
2-lamp	\$20/unit	Replacing T12HO 8' one lamp fixture – one for one replacement only.
4-lamp	\$16/unit	Replacing T12 8' two lamp fixtures – one for one replacement only.
4-lamp	\$30/unit	Replacing T12HO 8' two lamp fixtures – one for one replacement only.
<i>High Performance (super) T8 systems require manufacturer and model number for ballast and lamps used. Both ballast and lamp must be from CEE approved list to qualify.</i>		
<b>T8 High-Bay Fluorescent Fixtures with T8 Lamps and Electronic Ballasts</b>		
<i>One for one replacement only. Only when replacing specific wattage HID (metal halide, mercury vapor and high pressure sodium) or incandescent fixtures.</i>		
<b>High-Bay T8 Fixtures 4ft. Lamps</b>		
3-lamp	\$45/unit	Replacing 150 Watt or larger
4-lamp	\$70/unit	Replacing 250 Watt or larger
6-lamp	\$85/unit	Replacing 400 Watt to 749 Watt
6-lamp	\$120/unit	Replacing 750 Watt or larger
8-lamp	\$70/unit	Replacing 400 Watt to 749 Watt
8-lamp	\$100/unit	Replacing 750 Watt or larger
<i>See approved list at <a href="http://www.cee1.org">www.cee1.org</a>, under "Commercial Lighting." However if the ballast has a NEMA premium label, it automatically qualifies.</i>		

T5HO High-Bay Fluorescent Fixtures with T5 High Output Lamps & Electronic Ballasts One for one replacement only. Only when replacing specific wattage HID (metal halide, mercury vapor and high pressure sodium) or incandescent fixtures.		
High-Bay T5 High Output Fixtures with 4ft. Lamps		
2-lamp	\$60/unit	Replacing 150 Watt to 249 Watt
2-lamp	\$75/unit	Replacing 250 Watt or larger
3-lamp	\$70/unit	Replacing 250 Watt or larger
4-lamp	\$90/unit	Replacing 400 Watt or larger
6-lamp	\$70/unit	Replacing 400 Watt to 749 Watt
6-lamp	\$125/unit	Replacing 750 Watt or larger
8-lamp	\$110/unit	Replacing 750 Watt to 999 Watt
8-lamp	\$200/unit	Replacing 1,000 Watt or larger
10-lamp	\$175/unit	One 10-lamp or two 5-lamp replacing 1,000 Watt or larger
12-lamp	\$150/unit	One 12-lamp or two 6-lamp replacing 1,000 Watt or larger
All fluorescent fixtures must use electronic ballasts and T8 or T5 lamps. Ballasts shall have a power factor greater than 90%. Harmonic distortion of ballasts shall not exceed 20%. For 8-foot fluorescent ballasts, the total harmonic distortion shall not exceed 30%.		



# Pediatric Care as Exceptional as Your Kids

Dr. Paula Brito sees patients at RiverView Clinic in Red Lake Falls and Crookston. Same day appointments are available.

For appointments, call 218.253.4606 in Red Lake Falls or 218.281.9595 in Crookston.



## RIVERVIEW HEALTH

Exceptional People. Exceptional Care.

323 S Minnesota Street, Crookston | Park Place Mall, Red Lake Falls



## Erickson Dozer & Excavating

*"For Any Kind Of Dirt Work or Construction Job!"*

**Bull Dozing • Excavating • Skid Steer Service**  
**Mowing • Brushing • Finish Grade Work**  
**Site Prep Work • Culvert Install • Basements**  
**Ditch Cleaning • Grubbing Tree Rows**  
**Old Building Site Clean Up**  
25 Years Experience  
Fully Insured  
Black Dirt & Gravel Available  
Custom Farming & CRP Break-up & Clean-up  
Demolition



**Eric Erickson**  
**218-686-8720**  
Erskine, MN 56535





If you have anything to trade or sell, just drop a card to Red Lake Electric Cooperative, Box 430, Red Lake Falls, MN 56750.

**AFTER-HOURS OUTAGE PHONE 218-253-2200**



**Lighting – New Construction**

(Unless noted, must be used for lighting with a minimum of 1,800 hours of operation per year)

**High Performance (Super) T8 Fluorescent Systems (CEE qualified only)**

T8 4ft. High Performance		
1-lamp	\$6/unit	Both ballasts and lamp must be from CEE-approved list and meet the CEE specifications for High Performance T8 Systems in order to qualify.
2-lamp	\$7/unit	
3-lamp	\$12/unit	
4-lamp	\$14/unit	

**Reduced Wattage T8 Fluorescent Systems**

T8 4ft. Reduced Wattage 25W and 28W Systems		
1-lamp	\$7/unit	Lamps and ballasts must meet the CEE specifications for High Performance T8 Systems.
2-lamp	\$9/unit	
3-lamp	\$13.50/unit	
4-lamp	\$18/unit	

**T8 High-Bay Fluorescent Fixtures with T8 Lamps and Electronic Ballasts**

High-Bay T8 Fixtures – 4ft. Lamps		
3-lamp	\$20/unit	Install T8 fluorescent high-bay fixtures using recommendations from lighting professionals that use lighting design software to match the most efficient design to actual lighting needs.  Typically used instead of pulse-start metal halide fixtures.
4-lamp	\$25/unit	

**T8 High-Bay Fluorescent Fixtures with T8 Lamps and Electronic Ballasts (continued)**

6-lamp	\$50/unit	Install T8 fluorescent high-bay fixtures using recommendations from lighting professionals that use lighting design software to match the most efficient design to actual lighting needs.  Typically used instead of pulse-start metal halide fixtures.
8-lamp	\$70/unit	

See "Commercial Lighting" at [www.cee1.org](http://www.cee1.org) for approved lamp and ballast list. However if the ballast has a NEMA premium label, it automatically qualifies.**T5HO High-Bay Fluorescent Fixtures with T5 High Output Lamps & Electronic Ballasts**

(Unless noted, must be used for lighting with a minimum of 1,800 hours of operation per year)

**High-Bay T5 High Output Fixtures with 4ft. Lamps**

3-lamp	\$25/unit	Consult with a lighting professional (e.g., lighting suppliers and contractors) using their recommendations to install T5HO fluorescent high-bay fixtures.  Typically used instead of pulse-start metal halide fixtures.
4-lamp	\$50/unit	
6-lamp	\$70/unit	

All fluorescent fixtures must utilize electronic ballasts and T8 or T5 lamps. Ballasts shall have a power factor greater than 90%. Harmonic distortion of ballasts shall not exceed 20%. For 8-foot fluorescent ballasts, the total harmonic distortion shall not exceed 30%.

**Variable Frequency Drives**

Motors, pumps and fans must operate a minimum of 1,500 hours annually to be eligible

Incentive is \$40/HP - Maximum incentive cannot exceed 75% of the total equipment cost. (VFD horsepower is the lesser of the VFD nominal horsepower and the motor nominal horsepower).

Incentives for this measure are for replace on failure or retrofit equipment only.

Drives must be used in pumping or air handling applications.

## Do you have a story to share?

Red Lake Electric Cooperative's 75th year of service to its membership is an important event. It is a great tribute to those who have contributed to the conception, development, and continued operation of the Cooperative. If you have a story as to how the Cooperative has impacted your life we would appreciate it if you would share that story with our entire membership.

We know that some of our members have special memories of Cooperative related events. If you have a story about life (6303005.01 Equality Township Hall) before electricity, when the lights came on at your farm or in your home, or some other Cooperative related event we would like to hear from you.

Throughout the next few months Red Lake Electric will print these stories in the "Volts and Jolts" in order to share them with our members. If you, or someone you know, would be willing to be a part of a feature story for the newsletter, please contact the Cooperative at: 253-2168, 800-245-6068, redlake@minnkota.com, or P.O. Box 430 Red Lake Falls, MN 56750.

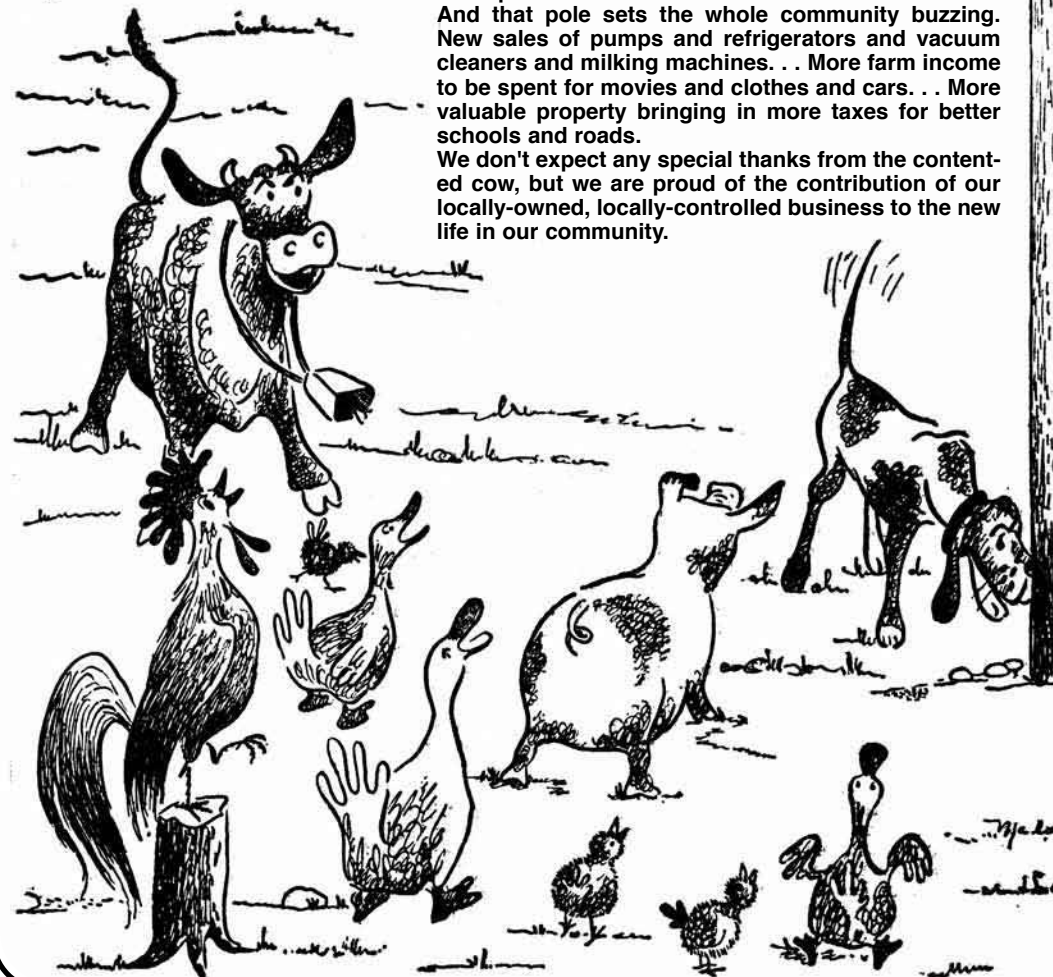
**LOOK UP**  
POWER LINES MAY  
BE OVERHEAD

To help commemorate Red Lake Electric Cooperative's 75th anniversary, clippings and pictures from past issues of the "Volts and Jolts" have been used at district meetings, the annual meeting and in the anniversary report and video. The Cooperative has had requests from members to re-publish and share some of these past publications. We will include some of them in the "Volts and Jolts" throughout the next few months.

This testament to the benefits and pleasures of electricity appeared in the August 1950 issue of the *Volts & Jolts*.



## It's got the whole barnyard buzzing!



That pole out front has literally put new life into the barnyard. Through brooders and other electrical equipment more animals are kept alive. . . healthier. . . more productive.

It's got the whole farm buzzing. From the kitchen to the barn it has brought better ways of producing better foods more efficiently. . . made the whole farm more productive. . .

And that pole sets the whole community buzzing. New sales of pumps and refrigerators and vacuum cleaners and milking machines. . . More farm income to be spent for movies and clothes and cars. . . More valuable property bringing in more taxes for better schools and roads.

We don't expect any special thanks from the contented cow, but we are proud of the contribution of our locally-owned, locally-controlled business to the new life in our community.

## AUTO PAY OFFERED BY RLEC

Red Lake Electric Cooperative is pleased to offer you Auto Pay. Now you can have your monthly energy bill paid automatically from your checking or savings account. You can receive the Auto Pay service by completing the Auto Pay sign-up sheet and returning it to Red Lake Electric Cooperative.

The Auto Pay service is free of charge. Not only is this service free, you will eliminate the expense of writing a check, postage to mail your payment and no more late payment penalties because your bill will be paid on time, every month, for you.

Your payment will be automatically made for you on the 5th of each month. If the 5th

falls on a weekend or holiday, the payment will be made on the next business day. You will continue to receive your monthly energy bill as you have in the past, indicating the amount that will be withdrawn from your bank account. The proof of your payment will appear on your bank statement and your next month's energy bill statement.

**Continue to pay your monthly bill until you are notified on your bill that the Auto Pay has been set up for you.**

If you have any questions about the Auto Pay please call RLEC at 800-245-6068 or 218-253-2168.

## AUTO PAY SIGN-UP SHEET

I authorize Red Lake Electric Cooperative (RLEC) and the bank listed below to initiate variable entries to my checking or savings account. This authorization remains in effect until I notify RLEC in writing to cancel it in such time as to allow RLEC to act on it.

RLEC ELECTRIC ACCOUNT # \_\_\_\_\_

NAME (PRINT) \_\_\_\_\_

ADDRESS \_\_\_\_\_

TELEPHONE # \_\_\_\_\_

NAME OF FINANCIAL INSTITUTION \_\_\_\_\_

CHECKING ACCOUNT # \_\_\_\_\_

SAVINGS ACCOUNT # \_\_\_\_\_

SIGN HERE TO AUTHORIZE \_\_\_\_\_

Please return this authorization form with a blank, voided check to:  
Red Lake Electric Cooperative, P.O. Box 430, Red Lake Falls, MN 56750

## Titan Machinery

- THIEF RIVER FALLS -



**Warranty**  
on **2005 & above**  
1 year or 500 hour  
warranty with \$500  
deductible on power train

TAG #	MODEL	YEAR	MFG	SERIAL #	SEPARATOR HRS	RETAIL PRICE
2363315	AF8120	2012	Case IH	YCG214659	352	320,000.00
2363387	AF8120	2012	Case IH	YCG214633	282	320,000.00
2363443	AF8120	2012	Case IH	YCG214647	281	320,000.00
2363489	AF8120	2012	Case IH	YCG214595	341	320,000.00
2363542	AF8120	2012	Case IH	YCG214576	343	320,000.00
1267167	AF8120	2011	Case IH	YAG210876	400	320,000.00
2363324	AF8120	2012	Case IH	YCG214657	680	295,000.00
2363452	AF8120	2012	Case IH	YCG214675	640	295,000.00
2363517	AF8120	2012	Case IH	YCG214621	631	295,000.00
2363575	AF8120	2012	Case IH	YCG214619	631	295,000.00
1297332	AF8120	2010	Case IH	Y9G208100	963	265,000.00
2958593	595R	2007	Caterpillar	57900362	1363	200,000.00
1523445	2388	2001	Case IH	JJC0273327	1920	100,000.00
1784851	CR960	2005	New Holland	HAI101831	3807	100,000.00
1784876	CR960	2005	New Holland	HAI101635	4403	100,000.00
1523472	2388	2001	Case IH	JJC0270835	2873	90,000.00
2966908	1680	1992	Case IH	JJC0117792	3280 Eng. Hours	17,500.00



**High Quality New & Used Equipment**

**To Choose From**



## TITAN MACHINERY

**CASE IH**  
AGRICULTURE

Hwy. 59 North  
Thief River Falls, MN  
[www.titanmachinery.com](http://www.titanmachinery.com)

Toll Free: **1-800-888-2744**  
Phone: **218-681-1423**



**Red Lake Electric Cooperative, Inc.**

*One of the Minnkota Power Systems*

Phone 218-253-2168  
Toll-free 1-800-245-6068  
Fax 218-253-2630  
After-hour outage 218-253-2200  
Office hours Monday-Friday, 8:00-4:30  
E-mail: redlake@minnkota.com  
Web site www.redlakeelectric.com

**Call Before You Dig - Gopher State One Call • 1-800-252-1166**

P. O. Box 430 • 412 International Drive SW • Red Lake Falls, MN 56750-0430