



Volts and Jolts

Published monthly for the members of
RED LAKE ELECTRIC COOPERATIVE, Inc.

One of the Minnkota Power Systems

SERVING THE FOUR-COUNTY AREA OF MARSHALL, PENNINGTON, RED LAKE AND POLK
and a portion of the lands of the Red Lake Band of Chippewa

VOL. 50 – NO. 7

RED LAKE FALLS (RED LAKE COUNTY), MINNESOTA 56750

MAY 2015



The Liberty dragline was transported eight miles to its new home in February using self-propelled modular transporters.

On a roll:

BNI dragline transported to new mine

Eight miles of frozen North Dakota ground separated the Liberty dragline from its new home.

The question for employees at BNI Coal was how to transport the 9.5-million-pound machine safely and efficiently without shortening its lifespan. The company, based near Center, N.D., opted to use specialized trailers, a unique method rarely used in the industry.

Normally, when a dragline is moved to a different location, the machine “walks” at 0.1 miles per hour on hydraulically powered shoes. But rather than having the dragline walk the entire distance, BNI hired Mammoet, a Dutch company, to transport the equipment using self-propelled modular transporters.

Liberty and the much smaller Page dragline completed their trek in February as part of BNI’s \$100 million expansion of the Center Mine. BNI provides the coal supply needs of the Minnkota-operated Milton R. Young Station, which serves as the primary electric generation resource for more than 128,000 retail consumers in eastern North Dakota and northwestern Minnesota.

Wade Boeshans, BNI president and general manager, likened the project to putting a dragline on roller skates, but it’s much more complicated than that.

“This relocation is more than just moving a dragline from point A to point B. It is a creative solution that required thoughtful planning and significant diligence,” Boeshans said. “Many different teams at BNI – from engineering and

environmental to maintenance and safety – worked in concert to pull off this big move.”

On Feb. 5, Mammoet arrived on site and began assembling 60 semi loads of equipment. The Liberty dragline was walked toward a loading pad and lifted six feet off the ground using ironwood jacks, each of which contains wood so dense it won’t float.

Seven remote-controlled, self-driving trailers were then positioned under the dragline. Together, the trailers had 197 axles and 708 hydraulically-controlled tires that move in unison to keep the machine level.

Something to see

When fully loaded, the trailer traveled at an average speed of one mile per hour. Each of the trailer sections is driven by a 600 horsepower diesel motor.

Trailing rather than walking the draglines significantly reduced the stress on the machines and eliminated major maintenance efforts that would have been necessary on the walking mechanisms.

It also eliminated the need to widen BNI’s haul roads. At 96-feet wide with its shoes, walking Liberty wouldn’t have worked on the 80-foot wide haul roads. Removing the shoes and trailering the dragline reduced the required width to 70 feet.

Moving equipment of that size was further complicated by the positioning of nearby power lines. Crews had to de-energize and lower two line sections to ensure proper clearance for Liberty.

Boeshans said that at one point the relocation efforts were stopped in order to escort

a school bus across the road.

“You could see all the kids’ faces pressed up against the windows watching this massive machine as they went by,” Boeshans said. “You know it’s a pretty big deal when the teenagers look up from their phones.”

New mining area

In March, the draglines began operating on 9,000 acres of a newly permitted mine located a few miles south of the Young Station. Upon arrival, the machines began removing dirt and other material covering the coal seams. Liberty digs about 18 million cubic yards per year, enough to fill 5,522 Olympic swimming pools.

BNI will supply coal from this mining area to meet contracts it has with Minnkota and Square Butte Electric Cooperative, owner of Young 2, through 2037. About 4.5 million tons of coal is delivered annually to the Young Station.

As part of the mining transition, BNI also upgraded its coal hauling fleet from eight 180-ton trucks to four 240-ton trucks. The new trucks are an improvement over the 1990s-era models that the mine had previously been using. They have 50 percent higher horsepower and 33 percent higher storage capacity.

Despite being much larger, reports from truck drivers are that the machines are surprisingly nimble, Boeshans said.

While transitioning to the new mining area, BNI will continue to use a single dragline at its current mine for the next

On a roll,
Continued on page 3

Operation RoundUp Grants total \$11,500

The Red Lake Electric Trust board met recently and awarded 17 grants to area non-profit and community organizations that totaled \$11,500.

Since its inception in 1993, 751 Operation RoundUp grants totaling \$454,000 have been gifted to area community organizations.

The Red Lake Electric Trust receives money for grants from the Operation RoundUp program administered by the Red Lake Electric Cooperative. Today, 94 percent of Red Lake Electric’s members voluntarily “round-up” their monthly bill for the Operation RoundUp program.

Following are organizations awarded RoundUp funds to help the disadvantaged:

-Violence Intervention Project of Thief River Falls: \$500 for their Umbrella Tree Program that provides supervised child visitations.

-Sun Country and You: \$250 to help support material and equipment needs.

-Red Lake County Victim Services: \$500 to help victim emergency expenses.

Six area emergency service providers were given grants:

-Plummer Volunteer Fire Department: \$1,000 to purchase emergency vehicle lighting and siren, along with a rear receiver hitch.

-St. Hilaire Fire & Rescue Department: \$1,000 to purchase personal protective equipment for structural fire gear.

-Red Lake Falls Volunteer Ambulance Association: \$1,000 to purchase CPR manikins, training videos, training defibrillator and training airway masks.

-Viking Fire and Rescue: \$1,000 to help purchase supplies and tools for ambulance and fire trucks and turnout gear for firefighters.

-Goodridge Area Fire & Rescue: \$1,000 to purchase a thermal imaging camera and make payments on a pumper truck.

-Middle River Volunteer Fire Department: \$1,000 to



Missy Sletten, left, Thief River Falls and Pennington County Safety Camp Committee, accepted an Operation RoundUp donation from Bonnie Christians, ex-officio director of Red Lake Electric Trust. The money will be used to conduct a camp to teach children the importance of safety that could one day save their lives.

purchase new structure and wild land gear.

Monies to benefit the general public were awarded to these organizations:

-Goodridge Lions Club: \$750 to replace roof on community hall with tin.

-American Cancer Society-Red Lake Co. Chapter: \$1,000 to help pay for travel expenses for cancer patients.

-Northland Community & Technical College – Pioneer 90.1 FM (KSRQ): \$250 to help purchase a new console board in the main studio.

Three organizations that provide help and service to area seniors received the following grants:

-Inter-County Nursing Service of TRF: \$500 to help with the cost of maintenance care home health.

-Goodridge Senior Citizens Center: \$500 to improve the existing ventilation system, paint and repair building.

-Golden Link Senior Center: \$250 to help build a wheel chair accessible rest room.

Two organizations received funds focused on youth pro-

grams:

-Safety Camp (Pennington County and TRF): \$500 to help purchase safety items for each child.

-Little Brother / Little Sister Program (TRF): \$500 to help move pilot program to a fully functioning program.

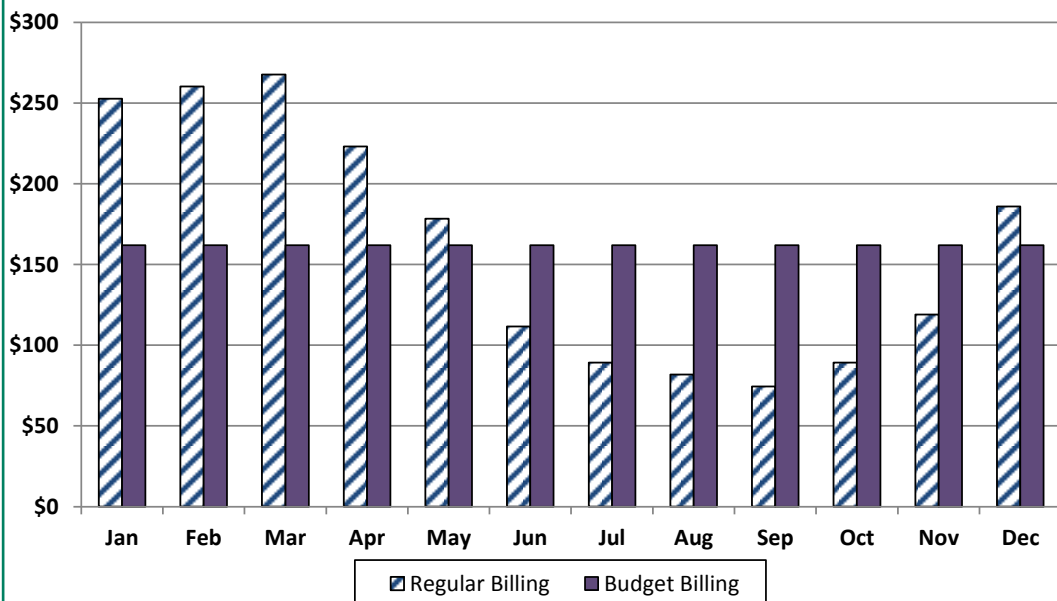
The RLE Trust Board of Directors determines grants two times per year, in March and September. Serving on the board are Van Swanson - President, Oklee; Randy Knutson - Vice-President, Newfolden; and Patty Mickelson - Secretary/Treasurer, Thief River Falls. Ex-officio directors are Bonnie Christians of Crookston and Roger Johanneck of Red Lake Falls, representing Red Lake Electric Cooperative.

Grant applications are available at the Red Lake Electric Cooperative Office or by visiting their website www.redlakeelectric.com. The next deadline for when Operation RoundUp grant applications are due is Sept. 7, 2015.

QUICK TAKES

A look at some statistics from your Red Lake Electric Cooperative

If you like to plan ahead or avoid billing surprises, we recommend budget billing for your monthly Red Lake Electric Cooperative energy bill. By using a budget billing plan you average out your monthly payments to RLEC based on your past years billing history. This enables you to manage the bigger bills that normally show up during the winter heating season. The time to start budget billing is now. Contact our office today for more information about your budget billing amount, 218-253-2168 or 1-800-245-6068.



In this month's *Volts and Jolts*

Page 2
Manager's Comments

Report from the Office

Page 3
Recipe Corner

From the Mail Bag

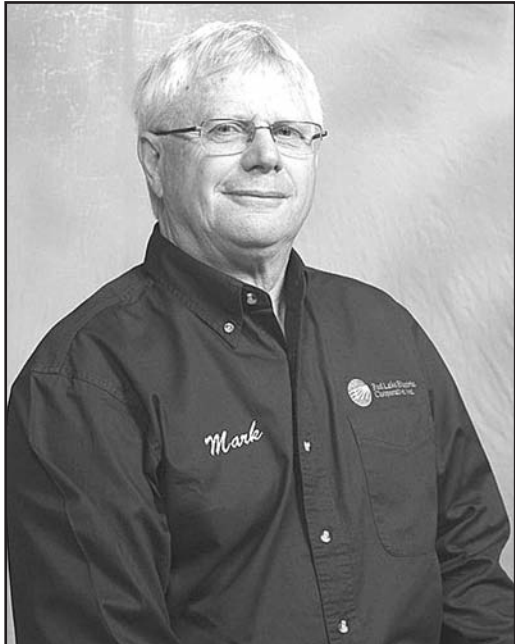
Page 4
Feature of the Month:
Steaks, anyone?

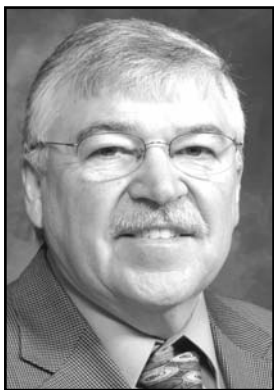
Pages 5 & 6
Annual meeting photos

Page 8
How to read your energy guide
U.S. Congress passes key bill

Hanson receives Red Lantern Award

Mark Hanson, a Red Lake Electric board director, was presented with the Red Lantern Award. This award recognizes his 10 years of service as a cooperative board member.





Manager's Comments

by Roger Johanneck



Damage - who pays?

If the coming summer unfolds like a normal summer in our part of the world, we will experience a storm or two that includes lightning. Most times lightning passes through without much fanfare but occasionally, a bolt strikes close to home and in turn, electrical equipment is damaged.

When that happens, it is not uncommon for Red Lake Electric to field an inquiry from a member asking if the Cooperative's insurance covers appliances, computers or other member owned equipment that has been damaged by lightning strikes to our electrical system.

Is Red Lake Electric Cooperative liable for damages due to lightning? The answer is no. Lightning strikes are an act of nature and the Cooperative

is not liable for acts of nature. If you have damage to your personal property as a result of voltage fluctuation from a lightning strike, you need to contact your home or business owners insurance to file a claim.

Damage to member owned equipment (4534001.06, Robert Baune) from voltage fluctuation is not limited to lightning strikes. Electrical equipment failure can also be the culprit for low or high voltage and in turn, cause damage to member owned equipment.

Again, any damage to member owned appliances or equipment should be turned over to the member's insurance. Only in the case of negligence would the Cooperative's insurance be liable to pay for damage to a member's proper-

ty. An example would be if we incorrectly wired the electric service so as to cause damage to the member's property.

An option to reduce the risk of lightning surge damage to your personal property is to use surge protection devices. Individual power strip surge protectors are relatively inexpensive but the downside is you may need to purchase a number of these surge protectors to cover all you appliances and electrical equipment.

Meter base or "whole house" surge protection equipment is available at a cost of \$3.95 per month from Red Lake Electric. If adding surge protection to your home interests you, please give us a call and let us know; we can help with that.



Report from the Office

by Shirley Bregier

Technology at RLEC

Technology is everywhere and ever-changing today. Technology is important in how we handle our daily lives, both personally and in business. Very little is done in the office any more without the use of computers, tablets, smartphone, scanners, GPS and the list goes on.

Red Lake Electric Cooperative has used an automated meter reading system (AMR) since 1996. This system allows us to receive a reading from each meter every 27 hours. This helps us not only get accurate meter readings on a timely basis but it also helps with pinpointing a problem with high usage or stuck meters.

Once we had the AMR system fully implemented, RLEC was positioned to offer the Auto Pay bill payment solution which has given members the option to have their electric bill payment automatically withdrawn from their bank account on the due date. Today, about a third of RLEC's members use the hands-free Auto Pay service to pay their monthly energy bill.

If you are one of the members who chooses to send us a check, your payment is record-

ed and processed by remote deposit technology. This process is a time saver because it eliminates the manual data entry that was required to post payments and the daily deposit trip to the bank is eliminated because check deposits are transacted remotely.

Most recently we have added Bill4U, another automated payment option. This option allows members to make their electric bill payments online from banking accounts using our secure website. It also allows you to view your billing statements and keeps a history of statements available to view.

This service allows our members to have paperless billing and to receive an e-mail each month when statements are ready to view. Bill4U also allows you to see the meter reading that we have received from your meter every 27 hours and lets you compare that reading to the corresponding high and low temperature for that day.

RLEC has recently implemented a mobile management tool to help design new electric lines or a service upgrade more quickly and accurately. Technology is also changing

ways we do business in the board room. Monthly board reports that once consisted of bound volumes of paper are now presented with the use of electronic tablets. Board members use tablets to receive periodic updates and information between the monthly meetings held at RLEC, too.

The use of technology has increased our efficiency of preparing and sharing information. Employee handling and the use of less paper has favorable impacts on our time, environment and office space.

As technology changes, RLEC will continue to evaluate the benefits of implementing new technology in our workplace. It is our continue intention to make changes that make sense; changes that improve service to our membership, help us manage our bottom line and have a positive impact on the electric rates to our members.

Before closing I want to give my congratulations to everyone that is graduating this spring. Whether from kindergarten, fifth grade, junior high, high school or college – we wish the best to you as you move to your next journey in life.

May is National Electrical Safety Month

Doing it yourself? Don't forget safety

As summer approaches, rising temperatures often give rise to home improvement projects. Whether you're building a new deck, fixing the garage door or planting a tree, electrical safety needs to be at the top of your to-do list.

Before tackling any projects (2225004.20, Wayne A. Garthus) take a few minutes to prepare for the job. Make sure you've got the right tools and check cords for any cracks or frayed insulation and proper connections.

Take note of potential haz-

ards in the work area such as overhead power lines, especially those connected to the home. Keep equipment and yourself at least 10 feet from power lines.

Also, make sure outdoor outlets are equipped with a ground fault circuit interrupter (GFCI) or use a portable GFCI.

If it is raining or the ground is wet, do not use electric power or yard tools. Simple steps like these could save your life.

*Learn more at
SafeElectricity.org*



Closed Memorial Day

In respectful remembrance,
Red Lake Electric Cooperative's
headquarter facilities will be closed
Monday, May 25
in observance of Memorial Day.

In case of an electrical outage
or emergency, dial the after-hour
phone number 218-253-2200.

May we all remember those
who have gone before us,
especially those who have sacrificed
their lives for our freedom.

Red Lake Electric Cooperative, Inc.

One of the Minnkota Power Systems

Things you should know about your electric service

BILLINGS AND COLLECTION

You will receive your energy bill on or near the 10th of each month. Payment of your monthly energy bill is due on the 10th of the month. You may pay your bill in person at RLEC during office hours, use the 24-hour drive-up drop box located next to the RLEC office, by Auto Pay, by mail or by Bill4U on www.redlakeelectric.com.

Payment must be in our office or in the mail as evidenced by the postmark on or by the 25th day of the month to avoid a late payment charge. A 1 1/2% monthly late payment charge will be computed on delinquent energy bills; the minimum late payment charge will be \$1.00.

If your payment is not received by the end of the month a notice of disconnection statement will be included in the message area on your following energy bill. The disconnection statement will give a final notice of when your electric service will be disconnected if the delinquent amount remains unpaid. If an employee is sent to disconnect your electric service a \$60 collection fee will be charged to your account, even if you pay the collector.

To have a disconnected service reconnected, all amounts owing including the \$60 reconnection fee and a security deposit must be paid. If the service must be reconnected after normal working hours a \$120 reconnection fee must be paid.

BAD CHECKS

A \$15 charge will be levied each time a check is returned because of nonsufficient funds, account being closed or payment stopped along with any applicable bank charges.

OUTAGES

In case your electricity goes out, please do the following:

1. Check your fuses or breakers at the yard pole or meter pedestal.
2. Call your neighbor to see if they are out of electricity also.
3. Call the RLEC office (218-253-2168 or 1-800-245-6068) during working hours or 218-253-2200 after hours.

METER TESTS

RLEC has a schedule in place to have its meters periodically tested for accuracy. Results from these tests show that meters generally slow down with age; however, if you think that your meter is recording too much usage, RLEC will test it for accuracy. You must pay a test fee in advance of the test. If the meter test shows that the meter was inaccurate, the test fee will be refunded to you.

STOPPED METERS

If you find your meter has stopped and you are using electricity, please contact the office immediately so we can replace it. Average consumption will be billed to the member for the time the meter was stopped so there is no advantage in not reporting a stopped meter.

METER READINGS

An automated meter reading system is utilized to obtain monthly meter readings. Although the system is normally reliable, that is always a chance that the correct reading has not been transmitted to the office for billing. Customers should periodically read their meter and compare it to the reading on the billing statement. If the actual reading is not close to the billing statement reading, please call the office. Keep in mind that the reading on your bill is from the end of the month.

GENERAL SERVICE RATES

Facilities charge variable \$27 to \$35 month

April-December	9.5¢ Kwh
January-March	9.9¢ Kwh
Long term off peak	5.5¢
Short term off peak	7.5¢

Off-peak equipment charge, \$5.50/month per heat meter.

Multiphase users add \$22/month cost of service charge.

Standby, \$12/month (meter disconnected but the power line remains; standby is not available on services larger than 15 KVA transformer capacity).

Security light: LED, \$8/month; High pressure sodium, \$8/month; mercury vapor, \$9/month; water heater flat credit, \$7/month (January-April billing).

Mission Statement

It is the mission of Red Lake Electric Cooperative to enhance the quality of life for people of our service area by consistently providing quality electric service and other valued services while holding our employees, our community and our environment in high regard.

Red Lake Electric Cooperative, Inc.

One of the Minnkota Power Systems

RED LAKE ELECTRIC COOPERATIVE, Inc.

VOLTS & JOLTS

(USPS 663-400)

Published monthly by the Red Lake Electric Cooperative, Inc., 412 International Drive SW, Red Lake Falls, Minnesota 56750-0430, in the interest of its members and others. Periodical Postage Paid at the U. S. Post Office in Red Lake Falls, Minnesota 56750. POSTMASTER, SEND ADDRESS CHANGES to Volts & Jolts, c/o Red Lake Electric Cooperative, Inc., P. O. Box 430, Red Lake Falls, Minnesota 56750-0430. E-mail: redlake@minnkota.com

OFFICERS AND DIRECTORS

PRESIDENT	Bonnie Christians
VICE PRESIDENT	Randy Versdahl
SECRETARY-TREASURER	Mark Hanson
DIRECTORS	Robert Finstad, Steven Linder, Peter Mosbeck, Colette Kujava, Stacy Blawat, Aaron Chervestad

Subscription Rate \$2.50 per year

After-hours outage phone 218-253-2200

NOTICE

Hidden within the text of the articles of this issue of the Volts & Jolts are the names and account numbers of some RLEC members. They will appear within the articles in parenthesis as such (9999999.99 Roger P. Member). If you find your name and account number, clip it out and send it with your next payment. You will be credited with \$5 on your electric bill.

From the Mail Bag

Dear RLEC,

Thank you for the beautiful oak shelf I won at the annual meeting.

Sharon Riendeau Brooks

Dear RLEC,

Thank you for the \$75 credit certificate I won at the Red Lake Electric Annual meeting.

**Don L. Adamson
Thief River Falls**

Dear RLEC,

Thank you for letting me sing at your meeting. I really appreciated it. Also, thank you for the gift!

**Love,
Grace Harmoning
Red Lake Falls**

Dear RLEC,

Thank you for the Genesis multi-purpose oscillating tool I won at the co-op's annual meeting.

**Gary Weiss
Red Lake Falls**

Red Lake Electric Trust,

Thank you for your donation of \$500 to the Little Brother/Little Sister Program of Pennington County. Your generosity is directly impacting our youth as well as strengthening our community as a whole. We have begun matching youth with mentors and are excited to see valuable friendships forming.

**April Ballard
Little Brother/Little Sister Program of Pennington County**

Red Lake Electric Trust,

Thank you for the generous grant you gave Early Childhood Family Education last year. There were lots of hands-on learning experiences enjoyed by both young and old.

**Margaret Hamrum & JoyAnn Dahl
-RLCC Plummer Site
Wanda Nelson
-Red Lake Falls Site
Susan Lee
-RLCC Oklee Site
Joni Bjerklie
-RLCC Oklee Site and Head Start**



Look for the logo

The ENERGY STAR logo is on all qualified products that meet specific standards for energy efficiency.

ENERGY STAR-qualified products exceed the federal minimum standards for efficiency and quality—sometimes significantly.

Look for the label on appliances, electronics, water heaters, windows, and other products that consume energy in your home.

On a roll,

Continued from page 1

few years. As mining activities are completed, the reclamation of land will commence. Every acre mined is restored by BNI to original or better than original condition.

North Dakota has one of the best mined land reclamation programs (3402005.01, Michael L. Hanson) in the nation, which is administered and enforced by the North Dakota Public Service Commission (PSC). All phases of reclamation are conducted with the approval of the PSC.

BNI is a past winner of the PSC's Excellence in Mining and Reclamation award and the Oliver County Soil Conservation District's Conservation Achievement award.

No matter the project, Boeshans said finding innovative solutions is something that is encouraged of BNI employees.

"The ability to think creatively, navigate the uncertainties, and then execute all the logistics to make it happen exemplifies the culture of BNI," Boeshans said.

Recipe Corner



Strawberry Cookies with White Chocolate Chunks

1 package (1/4 oz.) active dry yeast
1/4 C. all-purpose flour
1/2 tsp. baking powder
1/8 tsp. salt
1/4 C. unsalted butter, softened
4 oz cream cheese, softened
3/4 C. sugar
1 egg
1 tsp. vanilla extract
3/4 C. chopped fresh strawberries
2 Tbsp. lemon juice
1-2 Tbsp. flour
5 oz. white chocolate, chopped
Sanding sugar

Preheat the oven to 350°F and line pans with parchment paper. Pour fresh lemon juice over chopped strawberries, drain them after a few minutes. Whisk together 1-1/4 cup all-purpose flour, salt and baking powder and set aside.

Beat butter with sugar and cream cheese until it's light and fluffy. Add egg and vanilla, mix well. Gradually add flour mixture and mix until it's well combined. Stir in chopped white chocolate. Sprinkle strawberries with 1-2 tablespoons flour, toss them until all strawberries are coated with thin layer of flour and then stir them really gently in the batter.

Drop heaping tablespoon of batter onto pan leaving an inch space between. Set the cookies in the refrigerator for 5-10 minutes before baking. Sprinkle the cookies with sanding sugar if you want, but do not overdo it because they are sweet enough.

Bake for 13-15 minutes (until the edges become golden brown). Let them cool a few minutes in the pan than transfer them to a wire racks to cool completely.

Yield: 24

Pork Tenderloin with Pan Sauce

1/2 C. olive oil
1/4 C. red wine vinegar
Juice of 1 lemon
1-2 Tbsp. Worcestershire sauce
1-2 Tbsp. fresh parsley
2 tsp. dry mustard, finely chopped
Freshly cracked black pepper
4 cloves garlic, peeled and minced
1-1 lb. pork tenderloin (silver skin removed)

Combine all marinade ingredients and reserve 2-3 Tbsp. Place the pork tenderloin and marinade in a Ziplock bag and let marinate for at least 3-4 hours. Preheat oven to 350 degrees.

In a hot skillet over medium-high heat, sear each side of tenderloin for 2-3 minutes. Place in the oven and cook for 30-40 minutes or until the meat has reached 160 degrees. Let rest for at least 5 minutes before slicing.

Pan Sauce:

Pan scrapings from pork tenderloin
1/2 cup of chicken broth
2-3 Tbsp. of pork marinade (thoroughly mixed)
1- 2 tsp butter

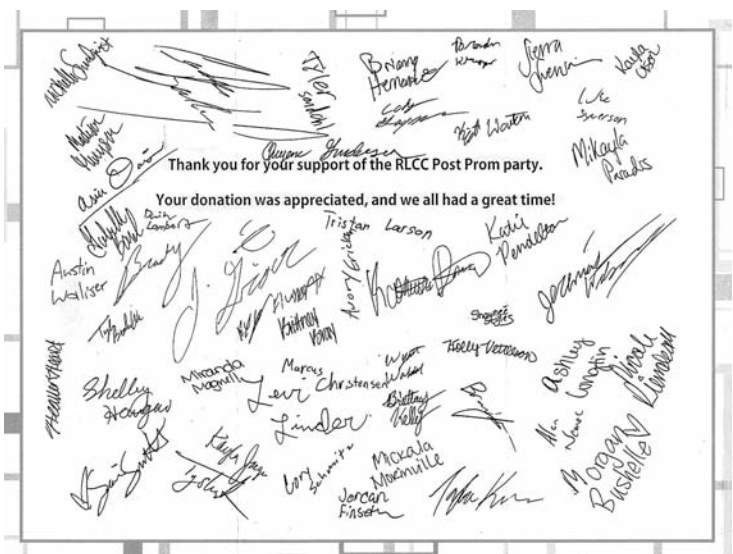
Meanwhile, place the skillet back on the stove over medium heat. Add the chicken broth and scrape up all the browned pieces from the bottom of the pan. Add the marinade and let it boil down for 2-3 minutes.

Add the butter and remove from heat stirring until butter has melted. Pour over the pork tenderloin.

French Onion Chicken Sandwiches

1 Tbsp. extra virgin olive oil
1 large onion, thinly sliced
1 tsp. granulated sugar
2 boneless, skinless chicken breasts, halved crosswise and pounded to 1-inch thickness, if necessary

Nonstick cooking spray
4 slices Swiss cheese
4 hamburger buns
2 C. baby spinach



Informational Web Sites

The following is a list of Web sites that can provide information and education in reference to electrical safety and energy conservation. These Web sites are listed as links on Red Lake Electric Cooperative's Web site at www.redlakeelectric.com.

- Electrical Safety Foundation International: www.esfi.org
- Alliance to Save Energy: www.ase.org
- US Environmental Protection Agency: www.epa.gov/greenhomes
- Energy Star: www.energystar.gov
- Minnesota Safety Council: www.minnesotasafetycouncil.org
- Safe Electricity: www.safeelectricity.org
- Lighting Controls Association: www.aboutlightingcontrols.org
- US Consumer Product Safety Commission: www.cpsc.gov

27th Annual
NORTHWEST CHAPTER OF A.B.A.T.E.
Spring Ride-In
May 15-17 | St. Hilaire MN (Municipal Park)

Active members of A.B.A.T.E. showing current membership card at gate will get Advance price. You may also sign up to become a member at the gate and get Advance price.

Tickets: \$35 ADVANCE or \$40 AT GATE

Free Primitive Camping · Showers · Bathrooms

LIVE MUSIC, featuring:
Obstruction of Justice, (Bernidji)

VENDORS:
Food
Beer Wagon
Music
Tattoos (Rainbow Inks, of Iowa)

Gates open at 6:00 PM Friday, May 15
Free beverages all weekend! (with wristband)

Ticket Info, contact:
Wayne (218) 684-4823
Travis (218) 289-9097
Chainsaw (218) 684-5070
Greg (218) 253-4856

No one under 21. ID's required at gate check-in. No attitudes. Donations to ABATE of MN are NOT tax deductible.

EAGLE SQUARE

Breakfast Special
All Breakfast Sandwiches

2 for \$3.99

We now sell Hunting & Fishing Licenses

405 Bridge St NE, Red Lake Falls
OPEN: Everyday 5:30 a.m. - 11:00 p.m.

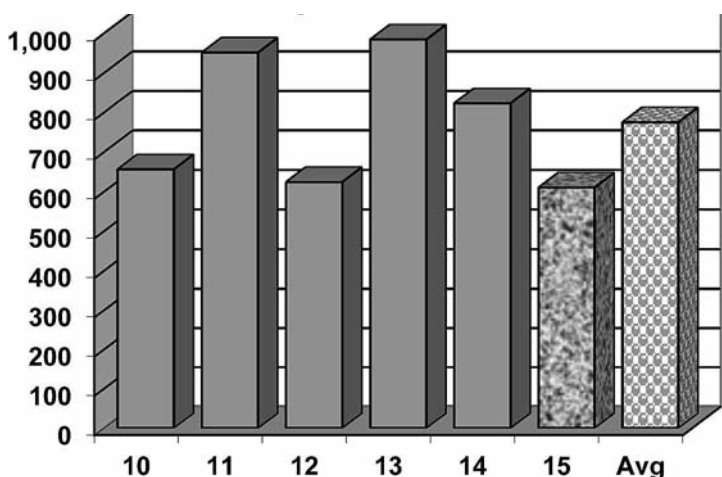
253-2995

HOT STUFF Foods

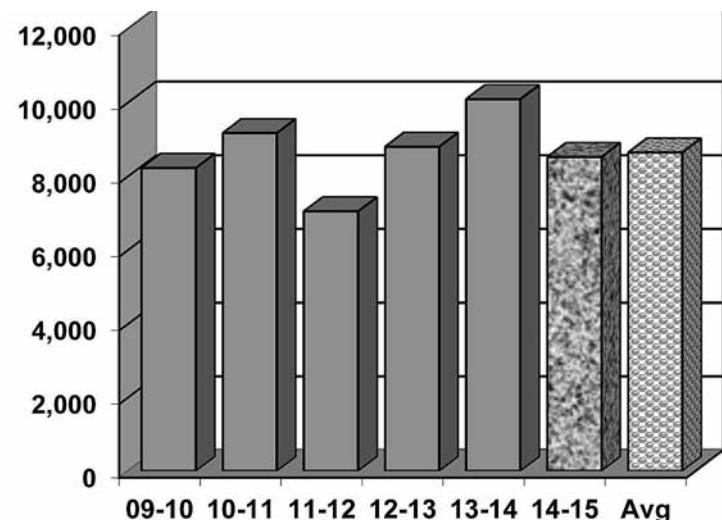
DEGREE DAYS

To determine degree days, you must calculate the daily mean temperature for the time period you are measuring. Degree day computation is based on the assumption that a building does not require any heat if the outside temperature averages 65 degrees during a 24-hour period. To obtain a degree day figure, the high temperature and the low temperature for the day are added and the total divided by two. That figure is then subtracted from 65. For example, if the high temperature was 30 degrees and the low temperature 10 degrees, the figure would be 30+10=40; 40/2=20; 65-20=45. This would be a 45-degree day. The higher the degree day figure, the more heat required to warm your home.

DEGREE DAYS April, 2015



Year To Date September 1 to April 30



inSinkerator

InSinkErator's Instant Hot Water Dispenser saves time and adds elegance to the kitchen. Near-boiling water at your fingertips — perfect for making gravy, melting chocolate or quickly preparing pasta. Also double-functions to remove candle wax from holders and quickly clean dirty pots and pans.

Wilcox PLUMBING & HEATING

Red Lake Falls 218-253-4347

BILL J. MOSER
MASTER PLUMBER
CFR 089400285
PM061208

BILL H. MOSER
MASTER PLUMBER
PM058011

**InSinkErator Hot Water Dispensers
The Next Necessity**

Red Lake Electric Cooperative, Inc.

Operating Report

MONTHLY COMPARISON

	MARCH 2014	MARCH 2015
Total Revenue	\$1,499,190	\$ 1,310,215
Total Margins	\$ 369,061	\$ 153,884
Cost of Power	\$ 959,458	\$ 911,591
KWH's Purchased	\$15,091,386	\$12,694,554
Capital Credits Paid to Estates	\$ 2,355	\$ 2,923
Average outage time in minutes per member	1	4.8

YEAR TO DATE COMPARISON

	MARCH 2014	MARCH 2015
Total Revenue	\$4,893,964	\$ 4,347,638
Total Margins	\$1,081,107	\$ 529,139
Cost of Power	\$3,054,456	\$3,021,259
KWH's Purchased	49,665,634	45,075,272
New Service Connections	1	1
Customers Served	5,281	5,322
Capital Credits Paid to Estates	\$ 15,591	\$ 9,802
Average outage time in minutes per member	13	6.3

	MARCH 2014	MARCH 2015
Miles of Line Overhead	2,323	2,327
Underground	264	270

Farmers Union
Oil Company

Thief River Falls218-681-3512



- Fertilizer
- Petroleum products
- Town and country deliveries
- Tires, batteries, accessories
- Farm supplies

WILCOX PLUMBING
AND HEATING, Inc.

RED LAKE FALLS

Plumbing/Heating/Air conditioning

BILL H. MOSER, Master Plumber
License No. 1770PM

BILL J. MOSER, Master Plumber
License No. 6039PM



- In-floor heating
- Oil furnaces
- Pressure systems
- Gas furnaces
- Electric heat pumps

FREE ESTIMATES
COMPLETE SALES
AND SERVICE

218-253-4347

The
Head-Quarters

Hair and
Tanning Salon

HAIRSTYLING
FOR MEN AND
WOMEN

PARK PLACE MALL
RED LAKE FALLS, MINNESOTA
218 253-4223

Security
STATE BANK



- Operating loans
- Vehicle loans
- Farm real estate loans
- Consumer loans

"We appreciate your business."

218-796-5157
Fax 218-796-5158
anthony.holthusen@ssboklee.com

A FULL
SERVICE
BANK

Each depositor insured to \$100,000
FDIC
FEDERAL DEPOSIT INSURANCE CORPORATION



Advertise
here for just
\$30/month!

Call
218-253-2594
to inquire

VOLTS AND JOLTS FEATURE OF THE MONTH

Steaks, anyone? Benke Farms offers wholesome meats

By Evelyn Glass

Two miles south of Middle River, Highway 32 travelers to Lake of the Woods or other points north will see a sign along the highway which says "On the Way, Stop for Steak." Operating from their farm home, Bradley and Joey Benke are marketing their beef and pork directly to the public.

Married in 2001, Bradley and Joey have five children, two daughters and three sons. The four oldest are grown and living away from home while their youngest daughter, Lexie, is still home and attends school in Middle River. The farm has been in the family for approximately 20 years.

With a herd of 45 cow-calf pairs, their cattle are corn-fed and raised without using antibiotics. Of Angus and Simmental blood lines, they provide beef with all of the desirable traits customers want in their meat. In addition to the cow-calf herd they have 27 replacement heifers that are AIS (Australian Illawarra Shorthorn) and have had their ultrasound pregnancy tests at 90 days. Some are sold and some are kept for their own herd.

The farm is also home to 40 hogs which are processed and sold by the package. The hogs are corn-fed and when acorns are available they feast on them. The pigs are not confined to crates but have free range and when sheltered in the barn they are in roomy pens. A new building was recently built to accommodate the animals when farrowing or calving and to shelter them from colder weather.

To process the beef and pork the animals are taken to the locker plant at Perham where they are USDA inspected and packaged for sale. The Benke's bring the meat back to their farm where they have a commercial freezer to store the meat until it is sold.

In addition to being able to purchase individual packages of tenderloin, round and New York strip steaks, roasts and hamburger, customers may buy a whole beef or a half. Hamburger may be bought by the pound or already formed into patties. Various cuts of pork are also available. Hogs may be purchased by the whole or half.

Those who wish to buy their meat by the whole carcass or the half may have these processed as they choose. In the past, meat from the Benke farm has been purchased and used for various charitable fund raisers, including by several local churches and for Ag Fest and Goose Fest. They appreciate having buyers of large orders place their orders well in advance of the date needed.

Joey and Bradley Benke own and operate Benke Farms where they raise corn-fed, non-antibiotic cows, calves and hogs. They sell meat directly to the public and are open by appointment.

When more meat is needed than what they raise on their farm, they purchase animals from Bradley's father and from neighbors who also raise their animals without antibiotics.

The Benke's interest in raising animals extends beyond hogs and cattle. We were ushered into a small house in the yard where five little Siamese kittens and their mother were safely ensconced in a baby bassinet. They are the rag doll lilac point breed of Siamese. With longer fur than the more traditional brown seal point breed, they are cuddly and cute. Joey said these precious kittens are also for sale.

When we arrived on the farm we were met by three beautiful, well-mannered dogs. One was a German shepherd, one a beautiful white Great Pyrenees and the other a German Short Hair/Golden Retriever, a smaller dog. They also raise German shepherd and Great Pyrenees cross-bred puppies for sale.

In addition to all of these animals, they also raise riding horses. By cross breeding quarter horse stallions with quarter ponies they have a smaller-sized riding horse. The youngest colt, just a few weeks old, was a light grey with darker tail and mane. These horses are used in taking care of the cattle. Joey said they prefer using horses to handle the cattle versus four-wheelers.

Horses are able to turn quicker and seem to understand what needs to be done unlike a machine.

Hay, barley and oats are raised for cattle feed, along with soy beans. No outside help is hired to work on the farm. Bradley works a second job for Davidson Construction in addition to his farm work. Joey is definitely very much involved in every aspect of the business.

When asked how Red Lake Electric has made their work easier and helped them in their business they quickly replied, "We count on electricity to run the freezers, computers for bookkeeping, pumping water and running the electric fences in addition to lights and the other appliances that we have. Keeping the farm running without electricity would be difficult."

The store is open by appointment (218-222-3016) or by chance. Take the opportunity when traveling north on Highway 32 to stop in and select the meats that will make your meals tasty.

Joey's closing words were, "The farm is a work in progress," which is a sentiment echoed by most farmers and business people as they continue to build their businesses.

This creative sign, located two miles south of Middle River, announces the Benke Farms business to passersby.

The Benke's own 45 cow/calf pairs of Angus and Simmental blood lines.

Benke Farms is home to 40 free-range, corn-fed hogs which are processed and sold by the package.

All beef cattle on the Benke farm are corn-fed and raised without the use of antibiotics.

Bray-Gentilly
Mutual Insurance
Co.

Locally Owned and Operated
Serving Policyholders Since 1900

218-683-3200

2017 Hwy. 59 SE • P.O. Box 592
Thief River Falls, MN 56701

INSURANCE FOR
FARMS, HOMES
AND PERSONAL
PROPERTY

TELEPHONE US FOR AN
AGENT NEAR YOU!

Advertise
here for just
\$30/month!

Call
218-253-2594
to inquire

Kilen's
Custom Cleaners

- Commercial
- Residential
- Custodial



Specializing in
Water, Fire & Soot Restoration

Jordan Kilen - Owner
(218) 686-2591
www.kilencustom.com

Free Estimates

"Achieving excellence
one customer at a time"

Want to cut your heating
cost by up to 50%?

Buy a YORK Affinity
heat pump today!



GROVE MECHANICAL, INC.

Your hometown heating &
air conditioning team!

Serving Crookston and the surrounding
communities for 30 years.
(218) 281-3863

OFFICE PHONE
253-2168

OUTAGE PHONE
253-2200

1-800-245-6068

Red Lake Electric
Cooperative, Inc.
One of the Minnesota Power Systems



Red Lake Electric Cooperative's annual meeting attendees enjoyed coffee, juice and donuts prior to the call of the March 25 business meeting.



The social time, prior to the call of the annual meeting, allows for attendees to review handout information and catch up on the latest with their friends and neighbors.

Putting safety first this month – and throughout the year

It's May – and Red Lake Electric Cooperative is celebrating National Electrical Safety Month. While safety for our members is top priority year-round, Electrical Safety Month is a time to acknowledge the importance of safety excellence.

This year, (3812001.04, Randy Jorde) we're focusing on electrical safety in the home. Electricity is the cause of over 140,000 fires each year, resulting in more than 500 deaths, 4,000 injuries and 1.6 billion in property damage, according to Electrical Safety Foundation International (ESFI).

There are many measures you can take to ensure the safety of your loved ones. Use these helpful tips from ESFI to safeguard your home.

- In the kitchen**
 - Vacuum refrigerator coils every three months to eliminate dirt buildup that can reduce efficiency and create fire hazards.
 - Ensure all countertop appliances are located away from the sink.

- All appliance cords should be placed away from hot surfaces. Pay particular attention to cords around toasters, ovens and ranges. Cords can be damaged by excess heat.

- The top and the area above the cooking range should be free of combustibles, such as potholders and plastic utensils. Storing these items on or near the range may result in fires or burns.

- Light the way to safety**
 - The wattage of the bulbs you use in your home should match the wattage indicated on the light fixture. Overheated fixtures can lead to a fire.

- Check lamp cords to make sure they are in good condition – not damaged or cracked. Do not attempt to repair damaged cords yourself. Take any item with a damaged power cord to an authorized repair center.
- Extension cords should not be used to provide power on a long-term or permanent basis. Have additional receptacles installed by a professional to provide power where needed.

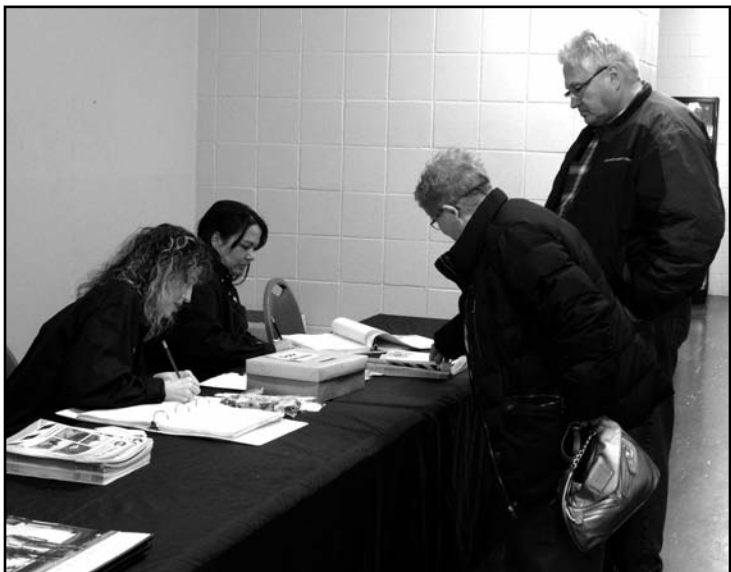
- Be prepared**
 - Nearly two-thirds of fire deaths result from fires in homes without working smoke alarms. Smoke alarms should be located on every level of your home, inside each bedroom and outside each sleeping area.
 - Test smoke alarms every month. Batteries should be replaced at least once a year – or sooner if indicated in the manufacturers' instructions. All smoke alarms should be

replaced at least every 10 years.

- Talk to your family about an emergency plan in the event of a fire in your home. If you have small children, include them in planning an emergency escape route – they are more likely to remember the plan if they're involved in creating it.

Electrical safety awareness and education can save lives.

Source NRECA
Straight Talk



Red Lake Electric Cooperative's employees Jenny Kelley and Melanie LaCrosse registered attendees at the 77th annual meeting held March 25.



RESIDENTIAL Rebates

Working together to save energy

Residential Prescriptive Program

This program is designed to provide end-use consumers with a quick and easy way to choose high-efficiency equipment at the time of normal equipment replacement or major renovations. Some of these technologies include:

Lighting (Must be ENERGY STAR® or DesignLights Consortium™ approved.)		
ENERGY STAR CFL Lamps		\$2/bulb Max. 12 per customer
ENERGY STAR LED Screw-In Bulb	In place of 40-60W incandescent.	\$4/bulb
ENERGY STAR LED Screw-In Bulb	In place of 65W or greater incandescent.	\$8/bulb
Maximum of 12 per customer for LED screw-in bulbs.		
ENERGY STAR LED Recessed Downlights	Complete fixtures or replacements kits.	\$8/unit
LED Outdoor Fixtures	LED fixture Wattage of <40 Watts. Must operate on a photocell and be DesignLights Consortium approved.	\$40/fixture
LED Outdoor Fixtures	LED fixture Wattage of >40 Watts. Must operate on a photocell and be DesignLights Consortium approved.	\$80/fixture
Appliances (Must be ENERGY STAR approved.)		
ENERGY STAR Refrigerator		\$25/unit
ENERGY STAR Refrigerator (with recycling of old refrigerator)		\$50/unit
ENERGY STAR Freezer		\$25/unit
ENERGY STAR Freezer (with recycling of old freezer)		\$50/unit
ENERGY STAR Clothes Washer		\$50/unit
ENERGY STAR Clothes Dryer		\$50/unit
Electric Water Heater	Minimum 80-gallon total capacity, EF ≥0.91. Must be controlled under the utility's load management program.	\$150/unit
Engine Block Heater Timer		\$10/unit
Heating, Ventilation Air Conditioning (HVAC) Measures		
Tune-Up for Residential Central A/C	Not valid on window units	\$25/unit
Tune-Up for Residential Air-Source Heat Pumps (ASHP)	Excludes mini-split ductless ASHPs	\$25/unit
ASHP	ENERGY STAR or 14.0 SEER / 8.2 HSPF	\$400/unit
Supplemental Heating Source for ASHP	Must modulate to allow ENERGY STAR-rated ASHP to operate down to 5°F, and be on load control	\$500/unit
Furnace (Air Handler) with ECM Blower	Furnace with ECM blower	\$150/unit
Mini-Split/Ductless ASHP	15 SEER	\$500/unit
Programmable Thermostat		\$25/unit
Geothermal Measures		
Ground-Source Heat Pump Open Loop <135,000 BTUH @ 59°F	16.2 EER /3.6 COP	\$200/ton Max. incentive \$2,500/home
Ground-Source Heat Pump Closed Loop <135,000 BTUH @ 77°F	14.1 EER /3.3 COP	\$400/ton Max. incentive \$5,000/home
New installations only. Must be installed by a qualified, insured contractor. Must be the primary heating source for the home and be on a list of prequalified units. Water-to-water systems need the manufacturer's specifications indicating the equipment meets incentive requirements.		
Replacement Geothermal		
Ground-Source Heat Pump Open Loop <135,000 BTUH @ 59°F	16.2 EER /3.6 COP	\$100/ton Max. incentive \$1,250/home
Ground-Source Heat Pump Closed Loop <135,000 BTUH @ 77°F	14.1 EER /3.3 COP	\$200/ton Max. incentive \$2,500/home
Incentive available for failed geothermal equipment only. Entire indoor unit replacement is required to receive incentive. Replacing only the compressor will not qualify for the incentive. Equipment being replaced must fall outside of any warranty period to receive incentive. Invoice showing proof of purchase must be attached.		

Mentor Farmers' Market

Open Every Saturday
8 AM - 12 Noon

Mentor School Yard (Rain or Shine)

Large variety of local foods, produce, & unique craft items. We take pride in the quality of our products.

www.mentorfarmersmarket.org



Like Us On facebook

Opening May 23

Minnesota State Electrical Inspectors

Pennington and Marshall Counties:
Scott Stenvik – 218-686-5406

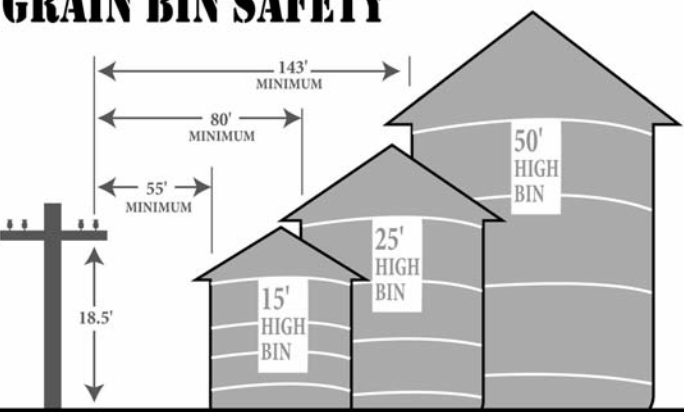
Red Lake and Polk Counties:
Brian Holmes – 218-686-1413

Any time you or an electrician does wiring or other electrical work at your home or farm, Minnesota state requires a state wiring inspector to conduct a proper inspection of the work. A rough-in inspection must be made before any wiring is covered. A final inspection is also required.

Please visit www.electricity.state.mn.us for more information.

The inspectors can be reached weekday mornings between 7:00 a.m. and 8:30 a.m.

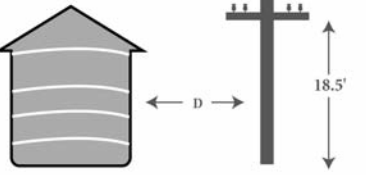
GRAIN BIN SAFETY




DANGER: HIGH VOLTAGE!

FOLLOW FARM SAFETY RULES AROUND POWER LINES

Height of grain storage structure	Minimum distance from line to bin wall*
15 ft.	55 ft.
20 ft.	68 ft.
25 ft.	80 ft.
30 ft.	93 ft.
35 ft.	104 ft.
40 ft.	118 ft.
50 ft.	143 ft.
60 ft.	168 ft.
70 ft.	193 ft.
80 ft.	218 ft.



*Based on a typical power line having a vertical clearance of 18.5 feet above the ground and a supply line phase to ground voltage of more than 0V to 22kV; National Electrical Safety Code Rule 232.



Plan ahead for grain bin placement

As rewarding as it may be, farming is an extremely difficult job – and it ranks among the top 10 most dangerous professions in the United States. At Red Lake Electric Cooperative, safety is top priority for all – our employees and our members.

Our farmers work hard to get the job done, and sometimes it's easy to forget all the necessary steps to take when practicing safe operations. These bins play an integral role in efficiency and profitability of farm and ranch operations, and safety regulations should always be considered when working around these structures.

Whether you're purchasing new grain bins or remodeling areas that contain existing ones, proximity to overhead lines must be a considered factor.

Safe clearance:

The National Electrical Safety Code requires an 18-foot minimum vertical clearance from the highest point of the filling port of the grain bin to nearby high-voltage wires and a 55-foot minimum distance from the power line to the grain bin wall. See the chart for further guidelines. Changes to landscaping and drainage work can affect clear-

ance height of power lines, so remember to check these measurements regularly.

Filling grain bins:
High-voltage power lines are not insulated, so it's important to remember to maintain an adequate high-wire clearance when using a portable auger, conveyor or elevator to fill your grain bin.

Moving equipment near grain bin:
When moving equipment, such as a hopper or a scaffold, be aware of nearby power lines. Remember to maintain a 10-foot clearance to ensure safety.

Accidents can happen in a split second, which is why Red Lake Electric Cooperative reminds you to always use caution when working near power lines. Bins that are erected that do not meet NESC clearance guidelines may have to be moved or the power line moved. This would be at the expense of the owner of the bins.

If you are considering a plan for a new grain bin or reconstruction of an existing bin site, please contact Steve Conely at 218-253-2168 or 1-800-245-6068 and let him assist you in maintaining a safe environment for you and your family.



Safe. Sound. Secure.® Since 1916

Save money with Auto-Owners Insurance Multi-Policy Discounts!

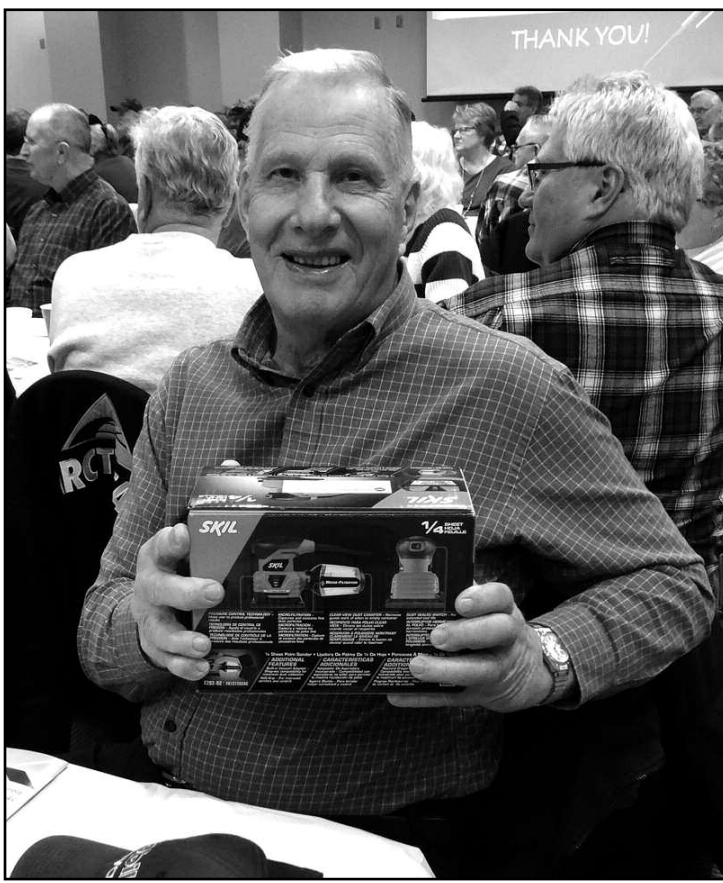
Call or visit us today!

Red Lake County Insurance
Red Lake Falls, MN
218-253-2177 • rlci@gvtel.com
www.redlakecountyinsurance.com

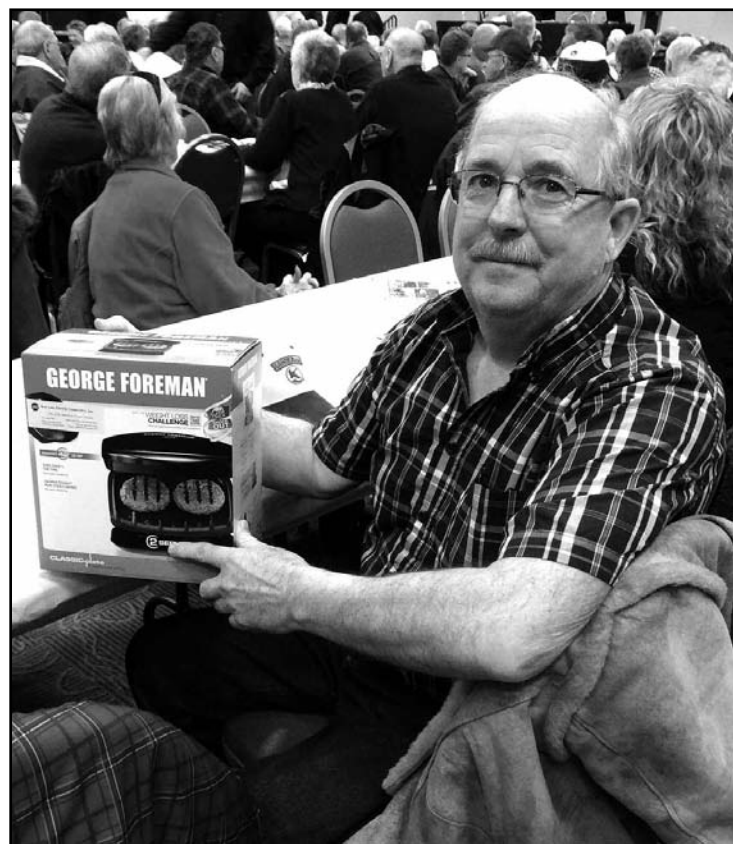




Long-term member Vernon Gagnon of Red Lake Falls was presented a bread machine at Red Lake Electric's annual meeting. He is seated with his wife, Val.



Winner of a Skill hand sander at Red Lake Electric Cooperative's 77th annual meeting was Floyd Hanson of Newfolden.



One of several door prizes at Red Lake Electric Cooperative's annual meeting was a George Foreman Grill won by James Glass of Crookston.

Safe digging starts by calling 811

From planting shrubs to building a fence, many outdoor projects require digging. Before the shoveling begins, make sure to call 811 before you dig. It could prevent serious injury or even save your life.

"Outdoor projects take planning and preparation," says Molly Hall, executive director of the Energy Education Council and its Safe Electricity program. "Part of that preparation is planning to avoid underground utilities, and 811 helps consumers do this."

According to its website, the 811 "Call Before You Dig" number is a national line that was created to help prevent people from coming into contact with underground utility lines during digging projects. A professional will then be sent to your digging location to mark the areas where the public utility lines are buried free of charge.

When you call, 811 will route you to a local utility locating service. Make sure to tell the operator where you plan to dig and what type of work you will be doing. From there, it takes a few business days for a professional to come mark your utilities with flags or spray-paint. So make sure to call in advance.

If you are in a rush to complete a project, a few days might seem like a long wait.

However, a small waiting period can spare you an injury that could take years of recovery. Even digging professionals can run into trouble with buried power lines.

Tom Dickey learned the dangers of underground electricity years ago when he was on the job as an underground contractor. Tom was asked to add a small task at the end of the work day—after his safety gear was already headed back to his shop in another truck. He made a decision that put time and efficiency above safety. He had one accidental slip and came in contact with lethal levels of electricity. Fortunately, he survived, but even years later he lives with pain every day.

"You may get by with it a thousand times, but at some point it can happen to you. It can happen to anybody," says Tom.

The Energy Education Council is a 501(c)3 non-profit organization dedicated to promoting electrical safety and energy efficiency. Established in 1952, the Council serves as a forum for diverse utility and energy organizations to collaborate on the mutually vital issues of efficiency and safety.

Electricity is not the only utility that can be located underground. Gas, water, cable, and telephone lines can also be buried beneath the earth. Not only are these utili-

ties dangerous to make contact with, but other people and businesses rely on these services.

Even if you previously had utilities located by calling 811, it is best to call before every digging project. Underground utilities can shift, and it is important to be certain of where they are before ever putting a shovel in the ground.

If you accidentally come in contact with an underground utility, do not bury the problem. Your first priority (4405001.02, Mehrkens Farms) should be evacuating the area for safety. It can be difficult to locate exactly where a problem is after the damage occurred and was buried. Damage to some underground utilities can cause dangers and inconveniences miles away from the actual site of the damage.

Small nicks in underground wires can be expensive, but necessary, to fix. If you nick an underground utility, notify your utility provider. Do not attempt to fix the problem yourself.

The Safe Electricity program urges you to start all outdoor digging projects the safe way—by calling 811 to have underground utilities marked.

For more information about 811 and electrical safety, visit call811.com and SafeElectricity.org.



Jack Srnsky, St. Hilaire, visits with Red Lake Electric Cooperative employee Troy Schmitz prior to Cooperative's March 25 annual meeting in Thief River Falls.



A call to Gopher State will get all utility underground lines and pipes located and marked, FREE of charge, within 48 hours.

Call Before You Dig

Red Lake Electric Cooperative members and area contractors are reminded, if you are planning to dig deeper than one foot, you must call Gopher State One Call – it's the law!

With the arrival of spring, many people have plans for digging and planting projects. To ensure your safety and the safety of others, before digging or planting, call Gopher State One Call.

1-800-252-1166

Gerbracht Logging, Inc.

Looking to buy standing timber and hybrid poplar plantation wood.

Fully insured with excellent references

Rodney Gerbracht 218-766-2770

Office: 218-694-2132



Red Lake Electric Cooperative, Inc.

One of the Minnkota Power Systems

Phone 218-253-2168
Toll-free 1-800-245-6068
Fax 218-253-2630
After-hour outage 218-253-2200
Office hours Monday-Friday, 8:00-4:30
E-mail: redlake@minnkota.com
Web site www.redlakeelectric.com



Call Before You Dig - Gopher State One Call • 1-800-252-1166

P. O. Box 430 • 412 International Drive SW • Red Lake Falls, MN 56750-0430

AUTO PAY OFFERED BY RLEC

Red Lake Electric Cooperative is pleased to offer you Auto Pay. Now you can have your monthly energy bill paid automatically from your checking or savings account. You can receive the Auto Pay service by completing the Auto Pay sign-up sheet and returning it to Red Lake Electric Cooperative.

The Auto Pay service is free of charge. Not only is this service free, you will eliminate the expense of writing a check, postage to mail your payment and no more late payment penalties because your bill will be paid on time, every month, for you.

Your payment will be automatically made for you on the 5th of each month. If the 5th

falls on a weekend or holiday, the payment will be made on the next business day. You will continue to receive your monthly energy bill as you have in the past, indicating the amount that will be withdrawn from your bank account. The proof of your payment will appear on your bank statement and your next month's energy bill statement.

Continue to pay your monthly bill until you are notified on your bill that the Auto Pay has been set up for you.

If you have any questions about the Auto Pay please call RLEC at 800-245-6068 or 218-253-2168.

AUTO PAY SIGN-UP SHEET

I authorize Red Lake Electric Cooperative (RLEC) and the bank listed below to initiate variable entries to my checking or savings account. This authorization remains in effect until I notify RLEC in writing to cancel it in such time as to allow RLEC to act on it.

RLEC ELECTRIC ACCOUNT # _____

NAME (PRINT) _____

ADDRESS _____

TELEPHONE # _____

NAME OF FINANCIAL INSTITUTION _____

CHECKING ACCOUNT # _____

SAVINGS ACCOUNT # _____

SIGN HERE TO AUTHORIZE _____

Please return this authorization form with a blank, voided check to:
Red Lake Electric Cooperative, P.O. Box 430, Red Lake Falls, MN 56750

How to read your energy guide:

U.S. Government

Federal law prohibits removal of this label before consumer purchase.

ENERGYGUIDE

Refrigerator-Freezer

- Automatic Defrost
- Side-Mounted Freezer
- Through-the-Door Ice

XYZ Corporation
Model ABC-L
Capacity: 23 Cubic Feet

Compare ONLY to other labels with yellow numbers.
Labels with yellow numbers are based on the same test procedures.

Estimated Yearly Operating Cost
\$77
Cost Range not available

640 kWh
Estimated Yearly Electricity Use

- Your cost will depend on your utility rates and use.
- Cost range based only on models of similar capacity with automatic defrost, side-mounted freezer, and through-the-door ice.
- Estimated energy cost based on a national average electricity cost of 12 cents per kWh.

ftc.gov/energy

Key features of appliance, and similar models that makeup cost range below.

Product description: make, model number, and size.

Estimated annual cost to run the appliance based on its electricity use and the national average cost of energy – appears on labels for all models for easy comparison.

Estimate of the appliance's annual electricity use. Multiply this by local electricity rates for actual operating cost.

The ENERGY STAR® logo means the product is better for the environment, using less energy than standard models.

U.S. Congress warms up to water heaters, passes key bill

Electric cooperatives across the country, including Red Lake Electric Cooperative, were relieved after Congress passed legislation April 21 that will enable them to continue using large capacity grid-enabled water heaters for energy and money-saving programs.

By a voice vote, the House sent S. 535 to President Obama, who signed the bill April 30. The bill, authored by Sens. Rob Portman, R-Ohio, and Jeanne Shaheen, D-N.H., cleared the Senate on March 27.

Calling it an efficiency measure, the Department of Energy implemented regulations April 16 to ban the manufacture of water heaters of more than 55 gallons that can be controlled by smart meter technology.

"Electric co-ops across the country appreciate the incredible perseverance of Sens. Portman, Shaheen and many others for their leadership in passing S. 535," NRECA CEO Jo Ann Emerson said in a statement. "The bill helps save consumers money, promotes reliability of the grid and helps

integrate renewable energy – truly a win-win-win piece of legislation."

More than 250 co-ops in 35 states use large-capacity electric resistance water heaters to reduce demand by an estimated 500 megawatts and save consumers hundreds of millions of dollars each year. Our power supplier, Minnkota Power Cooperative, and Red Lake Electric (6101002.04, Matthew L. Nemece) offer a demand response water heater program that uses low-cost, off-peak electricity to "charge" large capacity electric resistance water heaters during off-peak hours.

Minnkota has approximately 41,300 total electric water heaters operating in its service territory. Of that number, approximately 8,300 are large-capacity electric resistance water heaters in this program.

The benefits of this program include having an economical water heating solution, increased awareness of water usage, incentives to reduce consumption and conserving hot water.

"This decision allows us to continue to use that to help

manage costs for our consumers," said Todd Sailer, Minnkota's senior manager of energy supply.

Sens. John Hoeven, R-N.D., and Amy Klobuchar, D-Minn., sponsored a bill, S. 259, solely to keep large electric resistance water heaters available for demand-response programs. On the House side, Energy and Power Subcommittee Chairman Ed Whitfield, R-Ky., and Rep. Peter Welch, D-Vt., sponsored H.R. 906, which attracted 15 cosponsors from both parties.

"This commonsense, bipartisan bill is now the law of the land, enabling our rural electrical cooperatives to continue using large, energy-efficient water heaters and ensuring our rural residents won't be forced to buy a more expensive unit," Hoeven said in a statement.

"Consumers save money, rural electric cooperatives optimize their energy management and, because the water heaters in the program are energy efficient, the environment benefits."

What is a blink?

A blink can be either an instantaneous voltage sag or an interruption that lasts for a short period of time. A sag is a momentary decrease in voltage, while an interruption is a loss of voltage. Blinks usually last less than a second. Typically, they occur suddenly, and power is immediately restored to normal.

Sags and interruptions of power can look the same to people. You may see your lights go off for a very short period of time due to either a sag or an interruption, and this is where the term "blink" originates.

Why didn't my parents have problems with blinks?

Your parents didn't have digital clocks, VCRs, computers, etc. They had blinks since the reasons for blinks have always existed, but they were less affected.

What do blinks do?

When a blink occurs, it may or may not cause your electronic clocks and computers to require reprogramming. This means that you may have to reset your clocks, TVs, VCRs, and if you were doing something on your computer, you may have to start over again because it might have lost the work you've done. Hitting "save" on your computer more often is always a good idea to prevent loss of material.

What household items can be affected by blinks?

Electronic clocks that don't have a battery backup may begin flashing when a blink occurs. This can be any electronic clock in an alarm clock, refrigerator, coffee maker, TV, VCR, or any of the modern conveniences that have a clock installed in them. TVs and

VCRs can also lose their programming.

Can my utility eliminate the causes of blinks?

No not always. Blinks come from a number of different sources, and your utility can't eliminate all of them. Some of these sources are listed below.

Storms (5305018.03, John C. Zak) can cause both sags and interruptions. Sags may occur on the utility system due to short circuits. Interruptions occur when utility breakers or fuses blow because of a short circuit or when the short circuit is between you and the substation providing your power.

Utility equipment failure can cause both sags and interruptions. Sometimes blinks are caused by a breaker that operates due to equipment failure.

Animals can get into wires or substation equipment and cause blinks.

Accidents involving automobiles with electrical supply equipment are another cause of blinks.

Wiring or equipment problems in your house can cause blinks.

What can I do if my digital clock blinks?

For an alarm clock that has battery backup, you may need to replace the battery. If there is no provision for a battery, consider replacing the clock.

For sensitive electronic equipment that does not have a battery backup, you can purchase and install a separate battery backup system, commonly referred to as an uninterruptible power supply (UPS). A UPS has a battery and electronics which can power computers and electronic equipment for a short time. The goal of a UPS is to give you

enough time to save information and/or shut down the equipment. If you want to get a UPS, you should seek assistance to select the right one for your intended use.

For other appliances or equipment, contact the manufacturer and inform them about the problem that you're experiencing. A manufacturer may have a suggestion for fixing the problem. If not, consider either replacing the appliance or using it as it is.

How can I choose appliances that are unaffected by blinks?

When purchasing appliances that are equipped with electronic clocks or controls, either make sure the labeling indicates that it has battery backup or test it in the store. Another option is inspecting the store display carefully to verify that it has a provision for adding batteries. A simple test can be done by unplugging the display appliance and plugging it back in while at the store. If the clock or control needs resetting, the appliance will be more likely to have problems from blinks. In some cases, it may be necessary for store personnel to assist you in testing the appliance. If the appliance is a TV or VCR, you also want to make sure that the programming is unaffected by the test.

Will my surge protector help me with blinks?

No.

Who should correct any wiring or equipment problems in my house?

Always hire a qualified electrician when working on your breaker box, fuse box, or household wiring. In many towns and cities, electricians must be licensed as contractors and be bonded.

Wall to Wall to Wall
Liquidation

STORE
CLOSING
SALE

A DOWNWARD
PRICE CRASH...
AT LEAST
40% OFF...
UP TO 70% OFF

Hours: Mon.- Fri 10am - 7pm
Saturday 10am - 6pm
Sunday Noon - 5pm

70% Off
All Seasonal Merchandise
Christmas, Easter,
Valentines, Halloween,
St. Pat...
Buy Early and Save

40% Off
All Giftware, Scrap
Booking, Paint & Art
Supplies, Photo Frame,
Floral Supplies & Much
More

All Fabric
40% -50% Off
Over 1,000 Bolts
of fabric to
pick from

Mayday
Mayday

Gail said
"40% -50% -70% NOW"

• WHILE SELECTION IS STILL GOOD •

THE CURIOSITY SHOP

Fabrics, Crafts, Giftware & More!

224 Labree Ave N.

Thief River Falls, MN56701

Ph. 218-681-0270

Sorry, no checks... cash/credit cards only. ALL SALES ARE FINAL

Summer Fun Is Just Starting
At RV Sports, Inc.

PRE-OWNED
SPRING-SUMMER-FALL INVENTORY

ARCTIC CAT
ATVS

HONDA ATVS

MOTORCYCLES
(NEW NON-CURRENT
& PRE-OWNED)

PRE-OWNED ATV'S

YEAR - MODEL

COLOR

MILES

SALE PRICE

2006 ARCTIC CAT 650 V2 WINCH PLOW 4X4

RED

1,700

\$3,999

2007 KAWASAKI BRUTE FORCE WINCH/PLOW/WS 4X4

BLK

6,715

\$3,599

2007 HONDA RINCON TRX 680 EFI AUTO 4X4

GRN

3,000

\$3,499

2008 HONDA TRX 420 FE E.S. 4X4

CAMO

2,500

\$3,699

2008 YAMAHA GRIZZLY 450 4X4

GRN

4,444

\$2,899

2009 HONDA TRX 500 FE 4X4

CAMO

5,087

\$3,299

2009 ARCTIC CAT 650 TBX 4X4 (BOX MODEL)

GRN

3,000

\$5,299

2010 ARCTIC 700 H1 TRY W/ PS ACCY (TWO-RIDER)

TITANIUM

6,500

\$5,799

2011 HONDA TRX 250 TM RECON 2X4

RED

N/A

\$2,099

2011 HONDA TRX 420 FPA AUTO EPS 4X4

GRN

4,484

\$4,499

2013 ARCTIC CAT TBX 700 PS 4X4

EGM

2,656

\$6,999

PRE-OWNED MOTORCYCLES

YEAR - MODEL

COLOR

MILES

SALE PRICE

2007 HONDA VTX 1300R W/ACCESSORIES (CRUISER)

BLUE

12,700

\$5,499

2008 SUZUKI BURGMAN 400 (SCOOTER) W/ACCESSORIES

RED

2,533

\$3,599

1998 HONDA 750 ACE SHADOW W/ACCESSORIES (CRUISER)

BLACK

13,107

\$2,999

2005 HONDA 250 REBEL (CRUISER)

BLACK

187

\$2,799

2013 HONDA 50 METROPOLITAN (SCOOTER)

BLK/RED

4,200

\$1,499

"NEW" NON-CURRENT HONDA MOTORCYCLES

YEAR - MODEL

COLOR

ORIGINAL MSRP

NEW! CURRENT SALE

2010 NT700 (SPORT TOUR)

RED

\$9,999

\$7,599

2010 VT 1300 SABRE (CRUISER)

BLK, RED

\$11,799

\$7,999

2010 VT 1300 STATELINE (CRUISER)

RED

\$11,699

\$7,999

2012 VT 750 SHADOW SPIRIT (CRUISER)

BLK

\$8,240

\$6,499

2013 VT 750 SHADOW AERO (CRUISER)

\$8,540

\$6,799

2013 VT 750 SHADOW RETRO (CRUISER)

\$8,240

\$6,499

2013 CB 1100 RETRO 4-CYL (STREET)

RED, BLK

\$9,999

\$7,999

2013 GOLDWING F6B DLX (TOUR/BAGGER)

\$13,390

\$8,999

2013 GOLDWING F6B DLX (TOUR/BAGGER)

RED

\$20,999

\$14,999

2014 CTX 700 DCT

BLACK

\$7,999

\$6,499

2014 CB 1100 (RETRO CRUISER)

BLACK

\$10,399

\$8,799

2014 VT 1300 INTERSTATE (TOURING)

SILVER

\$13,249

\$9,499

2014 GL1800 VALKYRIE (CRUISER)

BLACK

\$17,999

\$13,499

VISIT OUR STORE FOR MANY MORE NON-CURRENT SPECIALS!
*ALL PRORAMS AND BONUS BUCKS APPLIED, FREIGHT & SETUP INCLUDED!

MORE HONDA SCOOTERS, OFF-ROAD, ENDURO, CRUISERS,
ETC. ON OUR DISPLAY FLOOR!

RV Sports, Inc.

www.rvsports.com

1412 3rd St. W • Thief River Falls, MN • FAX: (218) 681-8420 • 1-800-826-5403

218-681-1007

Hours: Mon. - Fri. 9-5:30 • Sat. 9-1