



# Volts and Jolts

Published monthly for the members of  
**RED LAKE ELECTRIC COOPERATIVE, Inc.**

*One of the Minnkota Power Systems*

**SERVING THE FOUR-COUNTY AREA OF MARSHALL, PENNINGTON, RED LAKE AND POLK**  
*and a portion of the lands of the Red Lake Band of Chippewa*

VOL. 48 – NO. 9

RED LAKE FALLS (RED LAKE COUNTY), MINNESOTA 56750

JUNE 2013

## Journeyman linemen join Red Lake Electric Cooperative



**Branden Narlock (left) and Darcy Cardinal**

Branden Narlock and Darcy Cardinal began full-time employment with Red Lake Electric on June 3, 2013. Both men are journeymen linemen and join the Cooperative's line department crew.

Narlock is a graduate of Lincoln High School, Thief River Falls, and Bismarck State College, Bismarck, ND, with a lineworker degree. He worked a few months for the City of Detroit Lakes' electrical department before taking employment with Lake Region Electric Cooperative in Pelican Rapids.

Narlock worked for Lake Region for nearly seven years obtaining the status of journeyman in 2010.

Narlock and his wife Bobbi, along with their one year old son Bryce, will soon be relocating in Red Lake Falls. As past-times Branden enjoys hunting and fishing and was a member of the Pelican Rapids Fire Department.

Cardinal is a Red Lake Falls Lafayette High School graduate as well as a graduate of the electrical (2301002.01 James Hjelle) lineworker program at Minnesota State Community

and Technical College of Wadena. He began his lineworker career working at Grafton, ND for a few months. Cardinal began employment with the City of Thief River Falls in 2002, obtaining his journeyman's in 2006. He was employed in Thief River Falls nearly 11 years.

Cardinal and his wife Mandi are residents of Red Lake Falls and have three daughters: Hope, 15; Anna, 13; Josi, 6. Darcy is a member of the Red Lake Falls Volunteer Fire Department and enjoys fishing and hunting.

## Hearing held on regional haze issue

State, Minnkota believe the state plan is right for North Dakota

The state of North Dakota and Minnkota Power Cooperative have been in an ongoing dispute with the federal EPA about the Best Available Retrofit Technology (BART) for nitrogen oxides (NOx) at the Milton R. Young Station for several years.

The dispute between the state and the EPA centers on how the state plans to improve visibility in Class I areas like Theodore Roosevelt National Park and the wilderness area of the Lostwood National Wildlife Refuge. The regional haze program addresses visibility; it is not a health-based program.

"It's time to close the book on this issue," said Dave Glatt, director of the state Health Department's environmental health section.

Glatt's comments came at another EPA public hearing on the North Dakota regional haze issue. The hearing was May 15 at the North Dakota Department of Health (NDDH) Environmental Training Center in Bismarck.

The latest hearing was on the reconsideration of North Dakota's State Implementation Plan (SIP) for regional haze that was approved in 2012, prompted by a petition from the Sierra Club and the National Parks Conservation Association (NPCA). The EPA is taking written comments through June

17 on the appeal of North Dakota's plan.

State leaders, including Gov. Jack Dalrymple, and industry officials spoke in favor of keeping the SIP for North Dakota. Other groups, including Sierra Club representatives, said North Dakota should fall under the Federal Implementation Plan (FIP) for regional haze.

The basic message from the state and energy officials was that the SIP features proven, cost-effective technology and the EPA made the correct decision in 2012 by approving the plan. Opponents said the EPA should reconsider the plan in favor of a FIP, which would include costly technology that has not been proven to work on North Dakota lignite coal using cyclone-fired boilers.

Stacey Dahl, Minnkota manager of external affairs, said the EPA's decision was not arbitrary or capricious in light of comprehensive scientific analysis, judicial precedent and an extensive public record.

The major difference between the SIP and the FIP is the cost on the region's utility industry and ratepayers. If the EPA is successful in its attempt to take over the state's plan dealing with NOx emissions, Minnkota would be required to invest about \$500 million in new technology. Minnkota had to increase its rates significantly

in 2011. Minnkota's \$425 million investment in emission controls, along with other market-place (3828002.06 Dean Dahl) conditions, required the increase.

The EPA's plan would require Minnkota and other utilities in the region to install Selective Catalytic Reduction (SCR), a technology that the agency says would reduce about 90 percent of NOx emissions. However, again, SCR hasn't been proven to work on cyclone-fired boilers fueled with North Dakota lignite coal.

**Regional haze hearing**  
*continued on page 6*

### In this month's **Volts and Jolts**

**Page 2**  
Manager's Comments  
2013 Legislative Session  
Member Service Department  
75th Anniversary

**Page 3**  
Recipe Corner  
From the Mail Bag

**Page 4**  
Feature of the Month  
Harrington Farm

**Page 5**  
Single phase line upgrade

## RLEC announces scholarship recipients

Each year, Red Lake Electric Cooperative provides scholarships for graduating seniors at each of the high schools operating throughout the Cooperative's service area.

The recipients are selected by the scholarship selection committee of the recipients high school. There were 11 recipients this year with each student receiving \$500.

The funds for these scholarships come from unclaimed capital credits.

Congratulations and best wishes to these scholarship recipients.



**ALEXANDRA KROHN**  
Marshall County Central  
Ken Krohn and Cheri Bjorgaard  
Viking



**KYLE MAJER**  
Greenbush/Middle River  
David and Kari Majer  
Middle River



**KYLIE LEHRER**  
Lincoln High School  
Mark and Jodi Lehrer  
Thief River Falls



**TIFFANY AUNE**  
Grygla-Gatzke High School  
Scott and Rose Aune  
Grygla

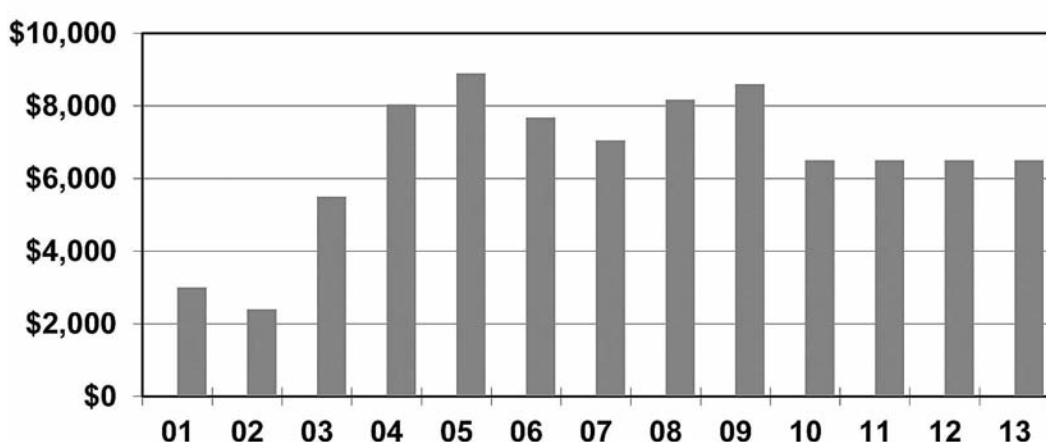


**CHLOE MILLER**  
Goodridge High School  
Jack and Jayne Miller  
Goodridge

### QUICK TAKES

A look at some statistics from your Red Lake Electric Cooperative

The graph below shows the amount of money Red Lake Electric Cooperative has given in scholarships to our service area high school graduates for the past thirteen years. The majority of this scholarship money is funded by unclaimed Capital Credits paid out by Red Lake Electric Cooperative. The ability of Red Lake Electric Cooperative to use these unclaimed Capital Credits this way was a privilege given to all Minnesota Cooperatives in 1987. Prior to that time, these monies were handed over to the state. We think this law change was a good one and are happy Red Lake Electric Cooperative can use this money to provide scholarships for our service area high school graduates.



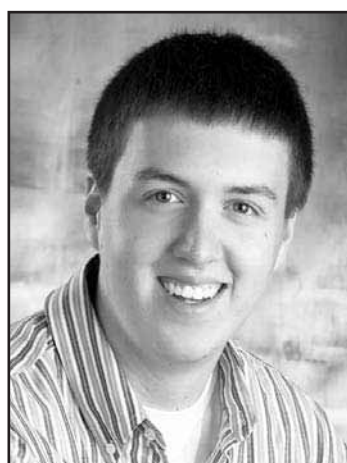
**BAILEY SWICK**  
Lincoln High School  
Raymond and Tammy Swick  
Thief River Falls



**ALEXIS HANSON**  
Lafayette High School  
Brad and Vicki Duden  
Red Lake Falls



**AMY PAQUIN**  
Red Lake County Central  
Allen and Joyce Paquin  
Brooks



**ZACH FINGER**  
Lincoln High School  
Roger and Susan Finger  
Thief River Falls

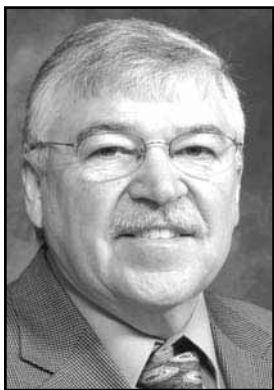


**EMMA DUFAULT**  
Crookston High School  
Tim and Marlene Dufault  
Crookston



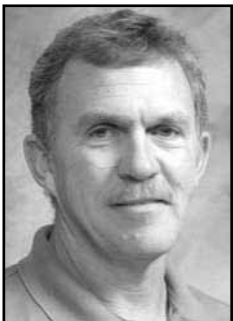
**ALEXANDRA ERICKSON**  
Warren/Alvarado/Oslo  
Peter and Becky Erickson  
Viking





## Manager's Comments

by Roger Johanneck



## Member Service Department

by Kevin Reich

## 2013 Minnesota Legislative Session

There was a big push by solar advocates this past legislative session to mandate and subsidize more renewable energy in Minnesota. The “Solar Energy Jobs Act of 2013” was introduced by two metro area legislators (Representative Will Morgan – DFL Burnsville and Senator Chris Eaton – DFL Brooklyn Center) and had quite a list of provisions that would have had a costly impact to the states electric utilities and ultimately you the rate payer. Because most, if not all utilities in the state, do not need any new generation and the fact that solar is a more expensive, less reliable source to generate energy in Minnesota, there was no support by electric utilities for this bill to become law.

Some of the wish list of items when the bill was introduced included:

-Requires utilities to pay solar generators a “value of solar” price calculated by the Department of Commerce.

-Creates a solar energy mandate that increases to over 10% by 2030.

-Requires utilities to send a 1.33% of annual revenue (sales tax) to the Department of Commerce to be used for subsidizing solar panel installations.

-Authorizes the Department of Commerce to pay additional subsidies to installations using Minnesota made solar panels.

-Requires each utility to provide to the Department of

Commerce an assessment of the current capacity available on its distribution system for solar panels on non-residential buildings.

Rural electric Cooperatives were opposed to this proposal for a number of reasons.

In 2007, the Minnesota legislature passed the Renewable Energy Standard (RES) that required all utilities in the state that by 2025, 25% of our energy sales had to be from a renewable source. It allowed utilities to use the best option to meet this renewable mandate. By requiring utilities to generate energy from solar reneges on the principles of that 2007 agreement.

Cost. Conservative estimates pencil out to \$26 billion dollar investment for the solar panels and installation or about \$20,000 for a family of four.

A 1.33% sales tax would result in \$80 million tax on electricity to subsidize, most likely, only those affluent who could afford to purchase solar panels.

Need. Electric Cooperatives across the state have enough generation. Mandating that Coops add more costly generation would result in more excess energy being dumped in the wholesale market at a loss.

Electric Cooperatives at last count were losing \$70 million a year from those transactions. We are working to reduce those losses, not add to them.

Red Lake Electric members who attended the Cooperative's

75th annual meeting in Thief River Falls March 27th or read the 75th anniversary report we sent to all members may recall the theme chosen for this occasion; “Making a Difference”. I thought the theme “Making a Difference” was appropriate for what Red Lake Electric has accomplished throughout its 75 year history. I also consider it an appropriate theme to sum up the (440201.02 Sheldon's Used Auto Parts) impact Minnesota's electric Cooperatives, its membership and the local legislators that represent us in St. Paul had in shaping the states newest renewable energy standard signed into law by Governor Mark Dayton on May 23rd.

While we are relieved that Cooperatives were exempted from this solar mandate, we understand the possibilities or likelihood that someone will introduce legislation again promoting more mandates on the electric industry. We are not against solar but we are against expensive mandates that are not well thought out. When we need more energy, we will continue to work toward what makes sense for our membership.

If you have an opinion you would like to share on the matter, I encourage you to contact the legislators that represent you. In the meantime, I want to thank our local legislators for the stance they took on this solar legislation.

## 75th Annual Meeting - Thank you!

Every third month I have an article in the Volts and Jolts therefore sometimes what I write about isn't timely. It can be information about something in advance or it can be something after the fact. In this writing it is after the fact.

Red Lake Electric staff was involved with two out of the ordinary projects prior to the Cooperative's 75th annual meeting. These two projects were the 75th annual report/booklet, “Making a Difference” and the 75th anniversary video, “When the Lights Came On.” I was involved with both of these projects.

Both the booklet and the video had a fair amount of time devoted to each but the projects were enjoyable as they were – out of the ordinary. What made them most enjoyable was the cooperative and appreciative

members I was able to work with.

Neither one of these projects would have been successful had it not been for the cooperation and approval of the members that were involved. This included members saying: yes, you can take pictures of us, our farm or our business; yes, I am willing to have my story about when the lights came on recorded and shared; yes, this photo meets my approval and the information stated is correct.

All of the time, effort, phone calls, visits, pictures and proofs led to a successful completion of two 75th anniversary products that Red Lake Electric was proud to present to you. And judging by the responses we

received, the products were well received and met the approval of you, our members.

One of the objectives with the 75th booklet was to include a cross-section of the Cooperative's members both from location and a diversity aspect. This resulted in features from all nine director districts from homeowners, to farmers, to businesses and more.

I extend my personal thanks to everyone that was so willing to be included in the booklet and video. Your willingness made my work much easier and very enjoyable. Thank you to everyone who has offered so many gracious compliments on the two products.

Happy 75th!

### Happy Fourth of July

In observance of Independence Day, Red Lake Electric Cooperative's headquarters will be closed  
**Thursday, July 4.**

In case of an electrical emergency or outage, call the after-hour phone number 218-253-2200.

As you celebrate Independence Day, remember to play and celebrate safely and responsibly.

# Voices have been heard on solar issue

Thanks to rural legislators and grassroots efforts, talk of implementing solar mandates on electric cooperatives and municipal utilities has faded into darkness in the Minnesota Legislature.

Grassroots efforts by Minnkota member systems and their member-owners and Northern Municipal Power Agency (NMPA) municipals and their participants, along with other groups, helped to thwart what could have been devastating costs for Red Lake Electric Cooperative and the Minnkota/NMPA Joint System.

After months of discussions and negotiations, Minnesota cooperatives and municipals in mid-May were exempt from solar mandates, taxes and net metering changes in the final energy bill in the 2013 Legislature.

The state's investor-owned utilities (IOUs) such as Xcel Energy and Minnesota Power weren't as fortunate. They will need to generate 1.5 percent of their energy from solar generation by 2020. Iron mining facilities and paper mills are exempt. To the surprise of many, this energy legislation for IOUs was

rolled into a larger economic development bill at a very late stage of the legislative process.

Consumers from Red Lake Electric and the Joint System made phone calls and sent emails and letters to rural legislators to voice their concerns about energy mandates and the millions of dollars that it would cost to pay for new solar generation.

For instance, a bill in the Senate (SF 901), if passed as introduced, would have required the state's cooperative and municipal power companies to derive 2 percent of their total electric sales within Minnesota from solar by 2025. Minnkota estimated this mandate alone would cost approximately \$193 million by 2025 in capital costs to the Joint System. The annualized cost would be nearly \$13 million in 2025.

The Senate bill would have also created a solar energy production incentive of 1 percent of retail electric sales to be paid to qualifying solar energy producers by IOUs, cooperatives and municipals. That would have cost the member-owners of the Minnkota/NMPA Joint System more than \$2.5 million in 2012.

In response the Joint System voiced opposition to a tax on members to subsidize solar installations on \$1 million homes on Lake Minnetonka and Gull Lake.

Other original bills in the 2013 Legislature had required cooperatives and municipals needing to derive an even higher percentage of their electric sales from solar, ranging from 4 to 10 percent of their total generation.

The Minnesota Rural Electric Association estimates that owning, operating and maintaining a solar facility in Minnesota would cost 25 cents per kilowatt-hour (kWh), which is four to five times more than what it costs the Joint System for coal and wind. Consider further that the state of Minnesota already has one of the most aggressive renewable energy mandates in the country at 25 percent by 2025.

The expense of the solar mandate to the Joint System makes even less sense when you consider the Joint System's current energy resource mix. The Joint System has been recognized for having the highest percentage of wind of any non-governmental utility in the country at 32 percent. The number increases to 42 percent if you count hydro-based generation, which is usually classified as a renewable energy source since it is derived from naturally replenished resources. But the state of Minnesota does not recognize hydro from large facilities (4618002-02 Steven Paulson) such as the Garrison Dam as a renewable source.

Solar legislation for cooperative and municipal utilities also would have reneged on the

negotiated 2007 Renewable Energy Standard agreement of allowing utilities to decide the best approach to meeting the standard for their system.

The Joint System and Red Lake Electric specifically thanks legislators, Rep Dan Fabian, Rep. Deb Kiel, Rep. Steve Green, Senator Rod Skoe and Senator LeRoy Stumpf, who

worked hard to revise the energy bills introduced in the 2013 Legislature. Please be sure to keep in touch with these legislators and thank them for their efforts in this battle to have a common sense approach to keeping electricity rates as low as possible.

**Why it's important**  
Minnkota member coopera-

tives have a good track record with renewable energy. Thirty-two percent of your co-op's member-owner load comes from wind energy. The Minnkota member systems are concerned about rates increasing significantly if they had to install expensive solar energy that only works 15 to 18 percent of the time.



### Red Lake Electric Cooperative, Inc.

*One of the Minnkota Power Systems*

## Things you should know about your electric service

### BILLINGS AND COLLECTION

You will receive your energy bill on or near the 20th of each month.

Payment of your monthly energy bill is due on the 20th of the month. You may pay your bill in person at RLEC during office hours, use the 24-hour drive-up drop box located next to the RLEC office, by Auto Pay, or by mail. Payment must be in the office, drop box, Auto Pay, or in the mail, as evidenced by the postmark, by the 5th day of the following month to avoid a late payment charge. A 1 1/2% monthly late payment charge will be computed on delinquent energy bills, the minimum late payment charge will be \$1.00.

If your payment is not received by the 15th of the month, a final notice of disconnection statement will be included on your following bill. The final notice statement will notify you when your electric service will be disconnected if the delinquent amount remains unpaid. If an employee is sent to disconnect your electric service, a \$60 collection fee will be charged to your account, even if you pay the collector.

To have a disconnected service reconnect, all amounts owing, a \$60 reconnection fee, and a security deposit must be paid. If the service must be reconnected after normal working hours, a \$120 reconnection fee must be paid.

### BAD CHECKS

A \$15 charge will be levied each time a check is returned because of nonsufficient funds, account being closed or payment stopped.

### OUTAGES

In case your electricity goes out, please do the following:

1. Check your fuses or breakers at the yard pole or meter pedestal.
2. Call your neighbor to see if they are out of electricity also.
3. Call the RLEC office (218-253-2168 or 1-800-245-6068) during working hours or 218-253-2200 after hours. We will accept collect calls for outages only.

### METER TESTS

RLEC has a schedule in place to have its meters periodically tested for accuracy. Results from these tests show that meters generally slow down with age; however, if you think that your meter is recording too much usage, RLEC will test it for accuracy. You must pay a test fee in advance of the test. If the meter test shows that the meter was inaccurate, the test fee will be refunded to you.

### STOPPED METERS

If you find your meter has stopped and you are using electricity, please contact the office immediately so we can replace it. Average consumption will be billed to the member for the time the meter was stopped so there is no advantage in not reporting a stopped meter.

### METER READINGS

An automated meter reading system is utilized to obtain monthly meter readings. Although the system is normally reliable, there is always a chance that the correct reading has not been transmitted to the office for billing. Customers should periodically read their meter and compare it to the reading on the billing statement. If the actual reading is not close to the billing statement reading, please call the office.

### GENERAL SERVICE RATES

Facilities charge variable \$27 to \$35 month  
April-December . . . . . 9.5¢ Kwh  
January-March . . . . . 9.9¢ Kwh  
Multiphase users add \$22/month cost of service charge.

Standby, \$12/month (meter disconnected but the power line retained; standby is not available on services larger than 15 KVA transformer capacity).

Security light: high pressure sodium, \$8/month; mercury vapor, \$9/month; water heater flat credit, \$7/month (January-April billing); off-peak equipment charge, \$5.50/month per heat meter; off-peak energy rate: 5.5¢/kWh long-term control, 7.5¢/kWh short-term control.

## Mission Statement

It is the mission of Red Lake Electric Cooperative to enhance the quality of life for people of our service area by consistently providing quality electric service and other valued services while holding our employees, our community and our environment in high regard.



**Red Lake Electric Cooperative, Inc.**

*One of the Minnkota Power Systems*

## RED LAKE ELECTRIC COOPERATIVE, Inc. VOLTS & JOLTS

(USPS 663-400)

Published monthly by the Red Lake Electric Cooperative, Inc., 412 International Drive SW, Red Lake Falls, Minnesota 56750-0430, in the interest of its members and others. Periodical Postage Paid at the U. S. Post Office in Red Lake Falls, Minnesota 56750. POSTMASTER, SEND ADDRESS CHANGES to Volts & Jolts, c/o Red Lake Electric Cooperative, Inc., P. O. Box 430, Red Lake Falls, Minnesota 56750-0430. E-mail: redlake@minnkota.com

### OFFICERS AND DIRECTORS

PRESIDENT . . . . . Bonnie Christians  
VICE PRESIDENT . . . . . Robert Finstad  
SECRETARY-TREASURER . . . . . Mark Hanson  
DIRECTORS . . . . . Kelly Lundeen,  
Steven Linder, Peter Mosbeck,  
Colette Kujava, Randy Versdahl,  
Stacy Blawat

**Subscription Rate \$2.50 per year**

## NOTICE

Hidden within the text of the articles of this issue of the Volts & Jolts are the names and account numbers of some RLEC members. They will appear within the articles in parenthesis as such (9999999.99 Roger P. Member). If you find your name and account number, clip it out and send it with your next payment. You will be credited with \$5 on your electric bill.



# Recipe Corner



## Rhubarb Muffins

- 1 1/4 c. brown sugar
- 1/2 c. cooking oil
- 1 egg
- 1 c. buttermilk
- 2 tsp. vanilla
- 1 1/2 c. rhubarb
- 1/2 c. nuts
- 2 1/2 c. flour
- 1 tsp. soda
- 1 tsp. baking powder
- 1/2 tsp. salt

Mix first 5 ingredients together and beat well. Add rhubarb and nuts. In a separate bowl, combine dry ingredients. Stir dry ingredients into rhubarb mixture just until blended. Spoon batter into muffin cups. Bake at 375° for 20-25 mins. **Yield:** 18 muffins

## Rhubarb Muffins

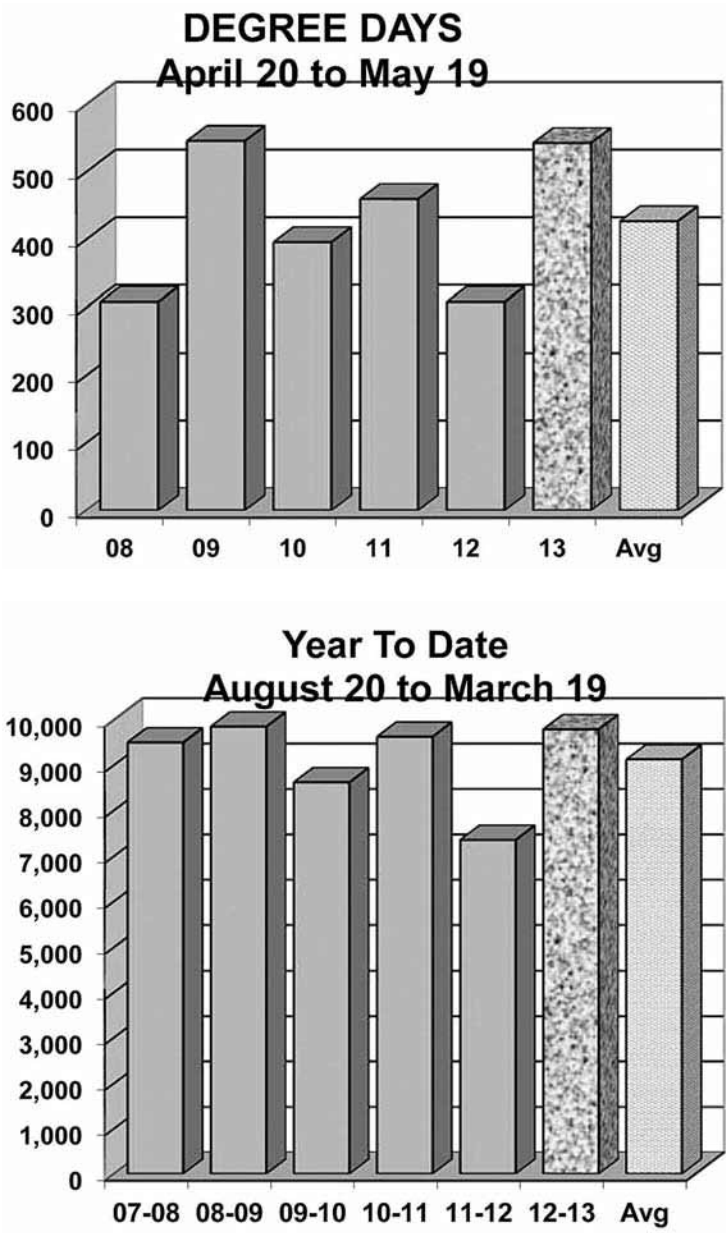
- 1 1/4 c. brown sugar
- 1/2 c. vegetable oil
- 2 tsp. vanilla
- 1 egg
- 1 c. buttermilk
- 2 1/2 c. flour
- 1/2 tsp. salt
- 1 tsp. soda
- 1 tsp. baking powder
- 1 1/2 c. rhubarb (diced)
- 1/4-1/2 c. coarse chopped nuts
- Topping:**
- 1 tsp. cinnamon
- 1 Tbsp. margarine, melted
- 1/3 c. sugar (mix together)

Mix well brown sugar, oil, vanilla, egg and buttermilk. Stir in dry ingredients and rhubarb. Fill muffin cups 2/3 full. Sprinkle topping on muffins before baking. Bake 30 mins at 350°. (Note: These muffins are moist and freeze well. If using frozen rhubarb, decrease buttermilk slightly.) **Yield:** 24-30 muffins

Red Lake Electric Cooperative, Inc.			
Operating Report			
MONTHLY COMPARISON			
	APRIL 2012	APRIL 2013	
Total Revenue .....	\$1,004,615	\$ 1,296,482	
Total Margins .....	\$ 38,190	\$ 179,626	
Cost of Power .....	\$ 743,321	\$ 847,892	
KWH's Purchased .....	9,721,040	12,364,436	
Capital Credits Paid to Estates ..	23,493	\$ 2,304	
YEAR TO DATE COMPARISON			
	APRIL 2012	APRIL 2013	
Total Revenue .....	\$5,222,468	\$ 5,662,452	
Total Margins .....	\$ 662,739	\$ 1,008,285	
Cost of Power .....	\$3,603,885	\$ 3,739,634	
KWH's Purchased .....	52,534,745	58,219,404	
New Service Connections .....	5	8	
Customers Served .....	5,209	5224	
Capital Credits Paid to Estates ..	\$ 40,712	\$ 41,970	
Miles of Line			
Overhead .....	2,324	2,324	
Underground .....	245	256	

# DEGREE DAYS

To determine degree days, you must calculate the daily mean temperature for the time period you are measuring. Degree day computation is based on the assumption that a building does not require any heat if the outside temperature averages 65 degrees during a 24-hour period. To obtain a degree day figure, the high temperature and the low temperature for the day are added and the total divided by two. That figure is then subtracted from 65. For example, if the high temperature was 30 degrees and the low temperature 10 degrees, the figure would be 30+10=40; 40/2=20; 65-20=45. This would be a 45-degree day. The higher the degree day figure, the more heat required to warm your home.



## Fresh Berry Crumb Pie

- Crumb Crust/Topping
- 1 cup hazelnuts or almonds (4 ounces)
- 2 cups all-purpose flour
- 1/2 cup granulated sugar
- 3/4 cup (1 1/2 sticks) chilled butter, cut into small pieces
- Filling
- 1/2 cup granulated sugar
- 1 1/2 Tbsp. cornstarch
- 2 pints fresh berries (such as blueberries, raspberries, and/or strawberries)

Preheat the oven to 350° F. To prepare crumb crust/topping, spread nuts in a medium baking pan. Roast the nuts, stirring occasionally, until toasted, about 10 minutes.

Remove nuts from the oven and turn out onto a cloth towel. Rub off and discard the papery skins. Increase the oven temperature to 450° F.

In a food processor fitted with the metal blade, process the nuts until finely ground, about 10 seconds. In a large bowl, mix together the nuts, flour, and sugar. Using a pastry blender or 2 knives, cut the butter into the flour mixture until coarse crumbs form.

Using fingers, evenly press half of the crumb crust/topping mixture into the bottom and sides of an 8- or 9-inch tart pan.

To prepare the filling, in a medium bowl, mix together the sugar and the cornstarch. Gently fold in the berries. Spoon the berry mixture evenly with the remaining crumb crust/topping.

Bake until topping is golden and filling is bubbly, 30 minutes. Transfer the pan to a wire rack to cool for 10 minutes. Serve warm.

Baking tips: Watch nuts very carefully when you are grinding them in the food processor. If you grind them too long, the result will be nut butter. **Yield:** 6 servings.

## Creamed Sweet Peas

- 1 Tbsp. all-purpose flour
- 1/4 cup sugar
- 2/3 cup milk
- 2 cups fresh sweet peas or
- 1 package (10 ounces) frozen peas, thawed
- 1/4 tsp. pepper

In a medium saucepan, combine flour, sugar and milk; mix well. Add peas and pepper; bring to a boil. Reduce heat; simmer for 10-12 minutes or until peas are heated through and sauce has thickened. **Yield:** 4 servings.

# From the Mail Bag

Dear RLEC,

Thank you so much for supporting me as I further my education at Southwest Minnesota State University this fall.

**Alexandra Krohn**  
**Marshall County Central High School**  
**Newfolden**

Dear RLEC,

Thank you so much for the scholarship. I really appreciate it.

**Zach Finger**  
**Lincoln High School**  
**Thief River Falls**

Dear RLEC,

Thank you so much for awarding me with one of your scholarships! It truly means a lot, and will help me further my education. My plan is to obtain degrees in both Elementary Education and Early Childhood Education. Thanks again!

**Sincerely,**  
**Kylie Lehrer**  
**Lincoln High School**  
**Thief River Falls**

Dear RLEC,

Thank you very much for the scholarship of \$500. This will help contribute to my tuition as I attend the University of Minnesota Moorhead. Thank you again!

**Alexis Hanson**  
**Lafayette High School**  
**Red Lake Falls**

Dear RLEC,

Thank you for your donation to our RLCC Post Prom Party. We had a great time. Thanks for helping make it all possible.

**Red Lake County Central High School**

To RLEC,

I would like to thank you so much for the donation of \$120.00 that you have given to the 4-H Youth Development Program here in Red Lake County. This means so much to the 4-H members. It is a great incentive for them to work hard on their fair exhibits.

I would like to invite you to come to the Red Lake County Fair in Oklee on June 28-30, 2013. We will be having the 4-H awards presentation on Saturday, June 29 at 6:30 p.m. in the Oklee school.

Thanks again for your donation!

Sincerely,  
**Sharon Weiss**  
**4-H Program Coordinator**  
**Red Lake County**

Dear RLEC,

Thanks for the donation for the Goodridge School Post Prom party. It was greatly appreciated.

**Goodridge High School**

## Red Potato Salad

- 3/4 cup sour cream
- 1/2 cup mayonnaise or salad dressing
- 2 Tbsp. vinegar
- 1-1/2 tsp. salt
- 1 tsp. celery seed
- 6 medium red potatoes (about 2 pounds), peeled, cooked and cubed
- 3/4 cup sliced green onions
- 1/3 cup radish slices
- 1/4 cup chopped celery
- 3 to 4 hard-cooked eggs, chopped

In a small bowl, combine sour cream, mayonnaise, vinegar, salt and celery seed; set aside. In a large bowl, combine potatoes, green onions, radishes, celery and eggs. Add the dressing and toss lightly. Cover and chill. **Yield:** 6-8 servings.

## Peach-Apricot Cobbler

- 1/2 cup granulated sugar
- 2 Tbsp. cornstarch
- 1 can (1 pound 13 ounces) sliced peaches, drained, juice reserved
- 1 can (10 1/2 ounces) apricot halves, drained, juice reserved
- 1 Tbsp. butter
- 1/2 tsp. ground cinnamon
- 1/4 tsp. ground nutmeg
- Topping
- 1/2 cup all-purpose flour
- 1/2 granulated sugar
- 3/4 tsp. baking powder
- 1/4 tsp. salt
- 2 Tbsp.s butter, softened
- 1 large egg
- Garnish
- 1 cup heavy cream
- 2 Tbsp. honey, at room temperature
- 1/2 tsp. ground cinnamon
- Preheat oven to 400° F.

In a medium saucepan, mix together sugar and cornstarch. Stir in 1/2 cup each of reserved peach and apricot juices. Cook over medium heat, stirring constantly, until mixture boils and thickens, 2 minutes. Remove from heat.

Stir in butter, cinnamon, and nutmeg. Add peaches and apricots. Spoon fruit mixture into 1 1/2-quart casserole.

To prepare topping, mix together flour, sugar, baking powder, salt, butter, and egg. Spoon topping over fruit mixture.

Bake cobbler until topping is lightly golden, 30 minutes. Transfer casserole to a wire rack to cool slightly.

To prepare garnish, beat together cream, honey, and cinnamon at medium speed until soft peaks form.

Serve cobbler warm, topped with spiced whipped cream.

Baking Tips: Try this dish with other canned fruit already on your pantry shelf. Use any combination of plums, pears, pineapple, or mandarin oranges. **Yield:** 8 servings.



# Can you help us locate any of the following?

Haugen, Floyd Mrs.  
Haugen, Machelles  
Hermanson, John Mrs.  
Hickman, Susan  
Hjelle, Dean  
Holmes, Velma  
Holten, Inga  
Honer, Ronald  
Hoodie, Fred E.  
Horgeshimer, Cynthia  
Howard, Mildred  
Hurford, Thomas  
Interstate Brands  
Jacobson, Gary S.  
Jansen, David  
Jensen, Barbara  
Johaneson, Harry  
Johnson, Dean  
Johnson, Gary E.  
Johnson, Kraig  
Jones, Charles, A.  
Kallestad, Charles  
Kelly, Ryan P.  
Kesterke, Kenneth D.  
Ketterer, Judy  
Kjensrud, Jim  
Klimek, Bernadette  
Knutson Mortgage & Finance  
Knutson, Ryan K.  
Kolden's Kar Korral  
Kreuter, Phil  
Kreutzberg, Dan  
Kuhnley, Richard  
Lake, Dennis E.  
Landsem, Steven  
Lara, Rachel  
Larry, Louise  
Larson, Bill  
Larson, Richard  
Larson, Robert  
Larson, Robert L.  
Laude, Gary  
Lemcke, Randy  
Lewis, Gary L.  
Lichtsinn, Norman W.  
Lindquist, Russell D.  
Lizotte, Darrell  
Maki, Ken  
Mandt, Agnes  
Marquis, Paul  
Mastin, Les  
Mathianson, Marvin O.  
Maul, Charles  
McCarthy Debi  
Mehl, Rebecca L.  
Melby, Corrine  
Miller, Otis V.  
Moede, Rena (Wallace)  
Nelson, Amy  
Nelson, Darrel W.  
Nelson, E.M. Concrete  
Nelson, Randy L.  
Nelson, Richard Trustee  
Nelson, Tim  
Nielsen, Thomas A.  
Nine-Klein Farms  
Northlander Camper Supply  
Norwest Mortgage Inc.  
O'Brien, Mike  
Olson, Alfred W.  
Olson, Darlene Lerol  
Olson, Donovan  
Olson, Floyd  
Olson, Hans  
Olson, Jerome  
Olson, Kenneth

Olson, Rodney  
Olson, Tommy D.  
Parsons, Sandra J.  
Peterson, Daniel  
Peterson, Kipp  
Peterson, Lonni  
Peterson, Todd  
Plastech Research, Inc.  
Putz, Patrick A.  
Radke, Solange  
Ramos, Paul A.  
Rauen, Lawrence R.  
Ricci, Anthony J.  
Rodriguez, Robert  
Roy, Randall R.  
RTR Manufacturing  
Rustan, Errol  
Rux, Howard L.  
Rystad, Melvin  
Sakellarioo, George A.  
Sande, Shirley  
Schaible, Tammy  
Schmidt, Jerry  
Searles, David S.  
Selleyes, Tom  
Sherva-Ollerich, Carole  
Sizer, Scott  
Skaeren, Jerry M.  
Skinner, Mike  
Sletten, Gayle  
Smith, Hazel  
Smith, Julene E.  
Smith, Michael  
Solberg, Roger  
Solberg, Scott  
Stanislawski, Stan  
Stanley, Max  
Starken, Paul  
Steinberg, Dan L.  
Stortroen, Mark L.  
Sunram, Lester  
Suronen, Doug  
Sansom, Ramell R.  
Swearson, Tim  
Swingen Construction  
Teed, Suzanne M.  
Thomas, Andrew & Dawn  
Throne, Lynn  
Tollefson, Diana L.  
Tunheim, Harry  
U.S.A. Financial Services  
Undeberg, Brian  
US Geological Survey  
Ussatis, Kevin  
Valley Bank & Trust  
Van Camp, Jeffery T.  
Van Wygarden, Ray H.  
Vedbratten, James  
Wahl, Michael  
Waterman, JoAnn  
Watne, Lowell D.  
Weiland, Rovella  
White, Charles  
Wick, Jonathan J.  
Wick, Lyle  
Wilcowski, Roland  
Williamson, Robbin  
Witt, Robert  
Wold, Francis Aestate  
Zak, Claire  
Zeal Properties  
Zenor, Allen H.

Farmers Union  
Oil Company

Thief River Falls218-681-3512



- Fertilizer
- Petroleum products
- Town and country deliveries
- Tires, batteries, accessories
- Farm supplies

WILCOX PLUMBING  
AND HEATING, Inc.

RED LAKE FALLS

Plumbing/Heating/Air conditioning

BILL H. MOSER, Master Plumber  
License No. 1770PM

BILL J. MOSER, Master Plumber  
License No. 6039PM

JASON JOHNSRUD, Master Plumber  
License No. 064717PM

Refrigerant Certified No. CFR089400285



- In-floor heating
- Oil furnaces
- Pressure systems
- Gas furnaces
- Electric heat pumps

FREE ESTIMATES  
COMPLETE SALES  
AND SERVICE

218-253-4347

The  
Head-Quarters

Hair and  
Tanning Salon

HAIRSTYLING  
FOR MEN AND  
WOMEN

PARK PLACE MALL  
RED LAKE FALLS, MINNESOTA

218 253-4223

Security  
STATE BANK



- Operating loans
- Vehicle loans
- Farm real estate loans
- Consumer loans

"We appreciate your business."

218-796-5157  
Fax 218-796-5158

anthony.holthusen@ssboklee.com

A FULL  
SERVICE  
BANK

Each depositor insured to \$100,000  
**FDIC**  
FEDERAL DEPOSIT INSURANCE CORPORATION



"THE FARMERS' HELPING HAND"

Dave Miller  
Agency

DAVE MILLER, AGENT  
RURAL ROUTE 1  
VIKING, MINNESOTA 56760



- All-Risk Crop Insurance
- Crop/Hail Coverage

218-523-5861

## VOLTS AND JOLTS FEATURE OF THE MONTH

### A greater appreciation for electricity learned from move to rural home

Glenyce Harrington remembers well the days before electricity was installed, mainly because she knew what she was missing out on.

Harrington grew up in Duluth before moving with her family, including her mother, Segrid, her father, Paul, and her brother, Kern, to rural Plummer in 1941, at the age of 13. In Duluth, the family enjoyed electricity in their home. They moved to the Plummer area because Paul owned land there, previously purchased by his Swedish immigrant parents Victor and Hulda Anderson in 1887. Paul also had many siblings still living in the region.

The couple built a small home. Harrington remembers the foundation being dug by a neighbor using mules and pull behind equipment. Harrington even used a hand pump on a well for water to mix the concrete in order to pour the slab the house was built upon. Boards that were used to make the forms for the concrete were evidently reused upstairs as some cement still clings to the wood. She explains that half of the house was built at that time and they lived in it that first winter. The next summer, in 1942, a second half was added to make the home complete.

Electricity was not yet in the area so the family made adjustments. An electric washing machine made the move with the family, only to have the electric engine replaced by a gas motor. She remembers a bright kerosene lamp on the dining table was the main source of light. Small kerosene lamps were portable and brought from room to room, although their light was not as bright as the large dining room lamp. "You had to fill those kerosene lamps about every night, and they smelled," she says. "We just adjusted to it, that's the way it was," she says.

A wood stove was installed for both heat and cooking. That stove is still the main source of heat for the home today. They also possessed a radio that ran on batteries. As batteries were expensive, not long lasting, and had to be ordered by catalog, the radio was only used to hear the news. They also didn't have a phone in those early years.

Harrington graduated from Pershing High School in Plummer in 1946. She then went to Red Lake Falls for teacher training. Upon graduation in 1947, she returned home to help her mother and ailing father. In the fall of 1948, she began teaching at Wildwood School, which was located near the intersection of Red Lake County Roads 1 and 12, just a few miles west of the home. In October

of that year, she was attending an educational meeting in Bemidji, Minn. for area teachers, when electricity was turned on in the home. "Upon returning home late that afternoon, it was a great surprise and thrill as I arrived in sight of my mother's house to see that there was light in all of the windows," Harrington remembers, "For the rest of that year it made it a lot easier to plan lessons and correct students work at home." She also remembers that a neighbor, Mrs H.H. Fredrickson wondered what she was going to do in the morning because she didn't have any kerosene lamps to wash! Her father never witnessed the electricity as he passed away shortly before the home was electrified.

The initial wiring totaled \$265.00 and was installed by Ted Mills and brothers Arnie and Lloyd Arlt in the summer of 1948. The first appliances purchased were a kitchen stove and a refrigerator. The stove, purchased from Red Lake Electric Cooperative in 1948, still works and looks like new, according to Harrington. "Even the oven timer operates as intended," she explains, "GE made good products 65 years ago!" The Maytag washing machine that had been converted from electric to gas, was reverted back to electric. Though it is not used today, the agitator and other parts are still in working order.

The year after electricity was installed, Harrington moved to St. Cloud to attend St. Cloud State University. She later married Don Harrington. The couple has lived in Mendota Heights, near the twin cities, since 1956. They have two sons, David and Curtis, nine grandchildren and one great-grandchild.

Segrid, Glenyce's mother continued to live in the home for many years until she moved into a nearby nursing home. The property was then split between Glenyce and her brother Kern, each receiving 20 acres. They have rented out the acreage to farmers and the property was named a century farm in 1997.

The original home, which sits at the end of a long, grassy drive, is still used on the property by Harrington and her husband, Don, as a summer cabin. The couple likes to get away from the city life and spends several weeks in the home during the late spring, summer and early fall. They sometimes garden, and often enjoy seeing the wildlife out their front door. Deer and gophers are very common in the fields next to the home while hawks and other birds make appearances throughout the summer.

Glenyce and Don Harrington

The original wood-fired kitchen stove still serves as the main source of heat in the Harrington home turned cabin getaway. A conventional electric range replaced the wood stove for preparing food and has been in service more than 65 years.

### June is Dairy Month

Drink three servings of low-fat or fat-free milk or milk equivalent every day.

One serving equals one cup of milk, one container (eight ounces) of yogurt, one and one-half ounce of cheese.

Here's what milk, cheese and yogurt have to offer:

Calcium builds strong bones and teeth. Vitamin A helps your vision and skin, helps regulate cell growth and the immune system. Vitamin D (in fortified milk) promotes the absorption of calcium and helps strengthen bones. Protein builds and repairs muscle tissue, and riboflavin helps turn food into energy. Niacin is important for the normal function of many enzymes in the body and helps metabolize sugars and fatty acids. Vitamin B12 helps build red blood cells, while phosphorus strengthens bones and generates energy in your body.

Include milk as a beverage at meals. Use fat-free or low-fat milk instead of water to prepare oatmeal and hot cereals.

Make a dip for fruits or vegetables with shredded reduced fat cheese.

Top hot dishes, soups, stews or veggies with shredded reduced fat cheese.

Make fruit and yogurt smoothies in the blender.

If you are lactose intolerant, choose lactose-reduced or low-lactose alternatives such as cheese, yogurt or lactose-reduced milk.

**Milk's Benefit for Bones and Beyond**  
Are you getting your fair share of calcium for good health?

Many people know that calcium is food for building strong bones, but did you know it also helps your muscles contract and relax, helps your (5117002.02) Leona Konickson) blood clot, and helps your nerves send messages? On

average, most adults consume much less than the 1,000 to 1,300 mg recommended daily.

Below are some dairy options, followed by the calcium content in each:

Plain nonfat yogurt, 8 oz. 452 mg  
Plain low fat yogurt, 8 oz. 415 mg  
Swiss cheese, 1 1/2 oz. 408 mg  
Chocolate milk shake, 10 fl. oz. 374 mg  
American processed cheese, 2 oz. 344 mg  
Fruit-flavored low-fat yogurt, 8 oz. 345 mg  
Mozzarella cheese (part skim), 1 1/2 oz. 311 mg

Cheddar cheese, 1 1/2 oz. 306 mg  
Skim milk, 1 cup 302 mg  
1% milk, 1 cup 300 mg  
2% milk, 1 cup 297 mg  
Whole milk, 1 cup 291 mg  
Chocolate milk, 1 cup 280 mg

One eight ounce serving of fortified milk provides the following nutrients: calcium 30%, vitamin D 25%, protein 16%, vitamin A 10%, vitamin B12 13%, riboflavin 24%, niacin 10%, phosphorus 20%.

Bray-Gentilly  
Mutual Insurance  
Co.

Locally Owned and Operated  
Serving Policyholders Since 1900

218-683-3200

2017 Hwy. 59 SE • P.O. Box 592  
Thief River Falls, MN 56701

INSURANCE FOR  
FARMS, HOMES  
AND PERSONAL  
PROPERTY

TELEPHONE US FOR AN  
AGENT NEAR YOU!

THIS SPACE  
FOR RENT

253-2594

Kilen's  
Custom Cleaners

- Commercial
- Residential
- Custodial



Specializing in  
Water, Fire & Soot Restoration

Jordan Kilen - Owner  
(218) 686-2591  
www.kilencustom.com

Free Estimates

"Achieving excellence  
one customer at a time"

Want to cut your heating  
cost by up to 50%?

Buy a YORK Affinity  
heat pump today!



GROVE MECHANICAL, INC.

Your hometown heating &  
air conditioning team!

Serving Crookston and the surrounding  
communities for 30 years.  
(218) 281-3863

OFFICE PHONE  
253-2168

OUTAGE PHONE  
253-2200

1-800-245-6068



Red Lake Electric  
Cooperative, Inc.

One of the Minnesota Power Systems



## Surge protection: critical for sensitive electronics

Computers and other electronic equipment found in nearly every home and business today are quite susceptible to sags and surges in voltage and current. They may show up as minor voltage spikes, short power interruptions or current distortions that are difficult to find, even if you know where to look. Dealing with power quality concerns requires an understanding of surge protection equipment and a plan to protect sensitive electronic devices.

Lightning strikes to homes or nearby locations are one primary cause of damage to delicate electronic equipment. Other causes like voltage spikes and multiple grounding paths can also create problems. Even minor surges can create a malfunction that requires the device

to reset or possibly even cause permanent damage.

The surge protection system outlined in this article could apply to nearly any residential or commercial setting, as well as agricultural buildings.

A properly installed transient surge suppression system includes multiple levels of protection. Beginning at the site of the utility service entrance, protection is provided through each of the building's service panels, subpanels and individual circuits that supply electricity to delicate equipment. Each level of protection is designed to remove a portion of the surge not eliminated by the preceding level.

The last level of protection is provided at the individual circuit. This is where the lowest

level of harmful disturbances will be filtered out. An outlet strip with a quality surge suppressor provides this protection.

In practice, many buildings won't need all the levels of protection. But providing protection only at the circuit level is not sufficient to guard against high-energy transient surges.

Should the building contain critical electronics that are affected by any change in current or voltage levels, the best is to provide protection at all levels.

As a minimum level of protection, experts recommend the following components be included in any surge protection system:

- Lightning arrestor on the main service pole (this is already provided by RLEC).

- Adequate grounding for service entrance and main service pole.

- Surge suppressor for the building electrical service panel.

- Secondary arrestor for the individual circuit to which the electronic equipment is attached.

To learn more contact Red Lake Electric Cooperative or your local electrician. Remember, no amount of surge protection will guarantee absolute reliability. But by understanding the causes of power quality problems and the components needed in a well-designed protection system, you will be able to avoid most costly losses in equipment and income.

## Help a loved one get more active: quick tips

Lots of people struggle to fit physical activity into their busy lives. If someone you care about is having a hard time getting active, you can help. Here are some tips to get you started.

**Suggest activities you can do together.**

Start small. Try taking a walk after dinner twice a week, or do sit-ups while you watch TV. Mix it up. Learn new stretches and warm-up exercises. Join a fitness class – choose an activity that's new for both of you.

**Make it part of your regular routine.**

Meet up at the local gym or recreation center on your way home from work. Give up a TV show to make time for physical activity. Wake up a bit earlier so you can go for a brisk walk together before breakfast. Walk or ride your bike to the store or coffee shop.

**Be understanding.**

What are your loved one's reasons for not being more active? Maybe she feels over-

whelmed or embarrassed. Ask what you can do to be supportive.

**Recognize small efforts.**

Be patient. Change takes time. Remember, some physical activity is better than none. Offer encouragement and praise. ("You did a great job with your sit-ups today!") Point out positive choices. ("I'm glad we're walking to the park instead of driving.")

**Choose healthy gifts.**

For birthdays or special rewards, choose gifts to encourage your loved one to be more active. Some ideas include:

New sneakers, workout clothes, a basketball, balance ball, hand weights, a pedometer (a tool that counts the number of steps you take), gift certificate to a gym or exercise class.

For more information about increasing physical activity, visit:

<http://www.health.gov/paguidelines/adultguide/default.aspx>

### Surge protection equipment available at Red Lake Electric Cooperative

Meter-base Surge Suppressor unit (owned, installed and maintained by RLEC)	\$3.95/month
Entrance Panel Surge Suppressor (must be wired into entrance panel by electrician)	\$119
3 AC Plugstrip with Coax and Phone Line Protection (this is an individual circuit suppressor)	\$49
2 AC Wall Mount Suppressors with Phone Line Protection (this unit mounts on a wall outlet)	\$39

To help commemorate Red Lake Electric Cooperative's 75th anniversary, clippings and pictures from past issues of the "Volts and Jolts" have been used at district meetings, the annual meeting and in the anniversary report and video. The Cooperative has had requests from members to re-publish and share some of these past publications.

This testament to the benefits and pleasures of electricity appeared in the August 1953 issue of the *Volts & Jolts*.

### Electric Ironer Can Be Real Time And Money Saver

**By: Mary Ella Porter**

Truly happy ironing days can be yours with an electric ironer. You just sit comfortably, letting the ironer do the work. Besides the miles and miles of sheet, pillow cases, table linens and other flat pieces, you can iron shirts, dresses, children's clothing or any item in the family laundry on the electric ironer.

Ironing with an ironer is easy, but it takes a little skill to iron more complicated clothing. This skill may be acquired by repetition.

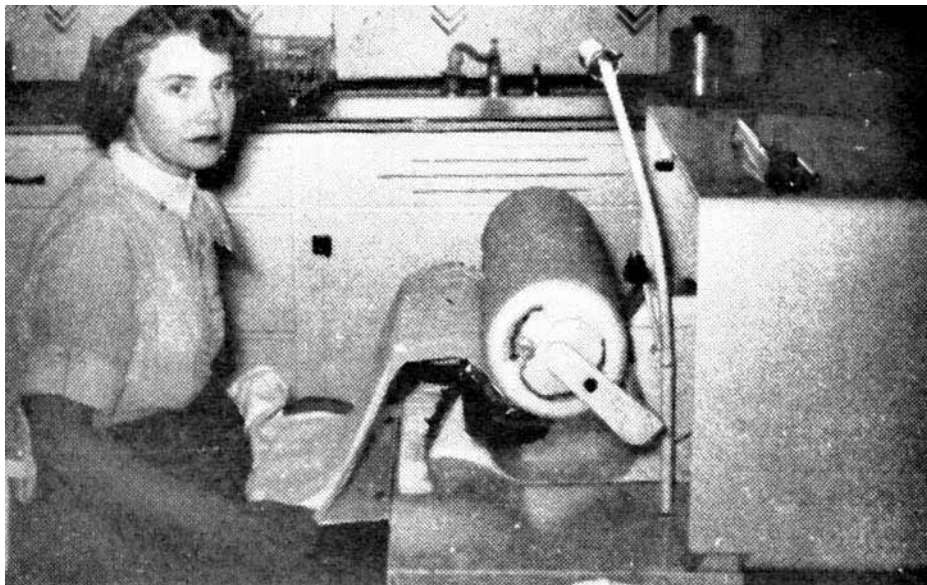
Remember the old saying, "practice makes perfect." The rules might help in the operation of the ironer:

1. Learn the controls.
2. Do simple pieces first.
3. More complicated things will then be easy.

Children enjoy ironing and helping their mothers iron with electric ironers but caution them about touching the elements.

If you homemakers are wanting time and energy savers, consider the electric ironer.

### Mrs. John E. Patenaude of Route No. 5, Red Lake Falls



We dropped in on Mrs. Patenaude last week and found her enjoying her ironing on her new Ironrite. She has had it just a short time and already is very skillful with it. She does the more complicated clothing with ease. We also noticed that the Patenaude farm has a complete water system, and just about every electrical appliance made for the house. The work shop has a welder and press drill and a milker is used for their fine herd. We congratulate the Patenaudes on their good judgment in putting electricity to work for them.



## Do you have a story to share?

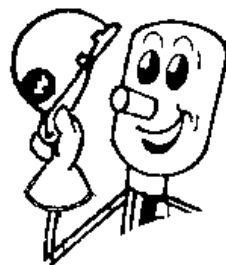
Red Lake Electric Cooperative's 75th year of service to its membership is an important event. It is a great tribute to those who have contributed to the conception, development, and continued operation of the Cooperative. If you have a story as to how the Cooperative has impacted your life we would appreciate it if you would share that story with our entire membership.

We know that some of our members have special memories of Cooperative related events. If you have a story about life before electricity, when the lights came on at your farm or in your home, or some other Cooperative related event we would like to hear from you.

Throughout the next few months Red Lake Electric will print these stories in the "Volts and Jolts" in order to share them with (5510002.02 Kelly Mosbeck) our members. If you, or someone you know, would be willing to be a part of a feature story for the newsletter, please contact the Cooperative at; 253-2168, 800-245-6068, redlake@minnkota.com, or P.O. Box 430 Red Lake Falls, MN 56750.

### Tip of the hard hat

Thank you to those who contribute stories for the *Volts & Jolts*.



## Don't want to write a check? Want to save on postage?

Red Lake Electric has a new payment option to make paying your bill easy. This service is free. Sign up is simple. Go to [www.redlakeelectric.com](http://www.redlakeelectric.com) and click on the Bill4U icon.

- Bill4U allows you to make your payments 24 hours a day directly from your checking or savings account eliminating the cost of the check and postage.
  - Bill4U allows you access to your billing statements at any time.
  - Bill4U allows you to view and compare your kilowatt-hour usage.
- If you have any questions or need more information, visit our web site or call Red Lake Electric 800-245-6068.



## Informational Web Sites

The following is a list of Web sites that can provide information and education in reference to electrical safety and energy conservation. These Web sites are listed as links on Red Lake Electric Cooperative's Web site at [www.redlakeelectric.com](http://www.redlakeelectric.com).

- Electrical Safety Foundation International: [www.esfi.org](http://www.esfi.org)
- Alliance to Save Energy: [www.ase.org](http://www.ase.org)
- US Environmental Protection Agency: [www.epa.gov/greenhomes](http://www.epa.gov/greenhomes)
- Energy Star: [www.energystar.gov](http://www.energystar.gov)
- Minnesota Safety Council: [www.minnesotasafetycouncil.org](http://www.minnesotasafetycouncil.org)
- Safe Electricity: [www.safeelectricity.org](http://www.safeelectricity.org)
- Lighting Controls Association: [www.aboutlightingcontrols.org](http://www.aboutlightingcontrols.org)
- US Consumer Product Safety Commission: [www.cpsc.gov](http://www.cpsc.gov)

## Pediatric Care as Exceptional as Your Kids



Dr. Paula Brito sees patients at RiverView Clinic in Red Lake Falls and Crookston. Same day appointments are available.

For appointments, call 218.253.4606 in Red Lake Falls or 218.281.9595 in Crookston.



323 S Minnesota Street, Crookston | Park Place Mall, Red Lake Falls

## Call Before You Dig

With the arrival of spring, many people have plans for digging and planting projects. To ensure your safety and the safety of others, before digging or planting, call Gopher State One Call, 1-800-252-1166.



Red Lake Electric Cooperative members and area contractors are reminded, if you are planning to dig deeper than one foot, you must call Gopher State One Call – it's the law!

A call to Gopher State will get all utility underground lines and pipes located and marked, free of charge, within 48 hours.

Don't take chances – mistakes cost lives.

CALL

# 1-800-252-1166



# Single phase line upgraded to three phase line for grain bin site

In recent years, Red Lake Electric Cooperative has installed new services or upgraded existing services for several grain handling and/or grain storage facilities. In April, one and one half miles of single phase line was upgraded to a three phase line for a grain bin site east of Gentilly. As you can see by the pictures, only two months ago, we had plenty of snow on the ground.



Red Lake Electric line crew personnel set the old single phase poles at an angle so the new three phase poles could be set in line



Sam Pahlen (left), apprentice lineman and Steve Kruse, lead lineman work to attach the wires for the new three phase line to an existing three phase take-off pole.



Jordan Gervais, apprentice lineman, works to reconnect a single phase tap into an existing farm yard, onto a new pole.



Sam Pahlen (left) and Steve Kruse check the wires on the new three phase line for proper tension and sag.



Cooperative crews work to put the finishing touches on the new three phase line.

# IT'S GO TIME.



**BIG RED**

**\$500** Bonus Bucks on select models\*\*

As Low As **1.99%** Fixed APR Financing for 36 months on approved credit\*

**RV Sports, Inc.**

[www.rvsports.com](http://www.rvsports.com) • 218-681-1007

Hours: Mon. - Fri. 9-5:30 • Sat. 9-1

1412 3rd St W • Thief River Falls

SEE DEALER FOR DETAILS

powersports.honda.com MULTI-PURPOSE UTILITY VEHICLES CAN BE HAZARDOUS TO OPERATE. FOR YOUR SAFETY, BE RESPONSIBLE. ALWAYS WEAR A HELMET, EYE PROTECTION AND APPROPRIATE CLOTHING. ALWAYS WEAR YOUR SEAT BELT, AND KEEP THE SIDE NETS AND DOORS CLOSED. AVOID EXCESSIVE SPEEDS, AND BE CAREFUL ON DIFFICULT TERRAIN. ALL MUV DRIVERS SHOULD WATCH THE SAFETY VIDEO "MULTIPURPOSE UTILITY VEHICLES: A GUIDE TO SAFE OPERATION" AND READ THE OWNER'S MANUAL BEFORE OPERATING THE VEHICLE. NEVER DRIVE UNDER THE INFLUENCE OF DRUGS OR ALCOHOL. ON PUBLIC ROADS OR WITH MORE THAN ONE PASSENGER. BIG RED IS ONLY FOR DRIVERS 16 YEARS AND OLDER. DRIVER AND PASSENGER MUST BE TALL ENOUGH FOR SEAT BELT TO FIT PROPERLY AND TO BRACE THEMSELVES WITH BOTH FEET FIRMLY ON THE FLOOR. PASSENGER MUST BE ABLE TO GRASP THE HAND HOLD WITH THE SEAT BELT ON AND BOTH FEET ON THE FLOOR. RESPECT THE ENVIRONMENT WHEN DRIVING. \*1.99% Fixed APR financing available for customers who qualify for super preferred credit tier for up to 36 months through Honda Financial Services™. Payment example: 36 monthly payments of \$28.64 for each \$1,000 financed. Offer good on all new and unregistered Big Red models. Not all buyers may qualify. Higher rates apply for buyers with lower credit ratings. Offer ends 7/31/13. \*\*\$500 Bonus Bucks valid on 2013 and prior MUV700/A models. Bonus Bucks redeemable only for purchases at dealer on purchase date. No cash value. Non-transferable. Redemption value is not to exceed \$500. Offer ends 8/31/13. Check with participating Honda Dealers for complete details. Big Red® is a trademark of Honda Motor Co., Ltd. ©2013 American Honda Motor Co., Inc. (8/13) 13-1115



Brett Knott, lineman, uses preformed ties to attach the wires to the insulators of the new three phase line.



**Red Lake County Insurance**  
Red Lake Falls, MN  
218-253-2177 • [rlci@gvtel.com](mailto:rlci@gvtel.com)  
[www.redlakecountyinsurance.com](http://www.redlakecountyinsurance.com)

**Auto-Owners Insurance**  
Auto-Owners Insurance  
Like Home. Like Business.

## Regional haze hearing from on page 1

North Dakota's plan required Over-Fire Air (OFA) and Selective Non-Catalytic Reduction (SNCR) technology that is proven to work on North Dakota lignite, and will reduce 55-56 percent of NOx emissions. Minnkota installed the system at a cost of \$40 million. "North Dakota has been long committed to protecting the state's air quality and health of its citizens," Dalrymple said at the hearing. "North Dakota has a very complete and technically capable air quality program and staff."

This issue is also tracking in the court system.

A hearing on the issue was held May 14 in front of a three-judge panel in St. Paul. Minnkota General Counsel David Sogard attended and reported that the arguments had gone well, and that he is hopeful about the court's decision, which will come in three to five months. If Minnkota prevails, the (7617003.01 Chester and Rita Hallof) ruling will supersede the administrative process.



When you schedule an appointment at your local Altru Clinic, many great things are able to happen. Not only will you find excellent care from local Altru providers and the convenience of same day appointments, onsite lab, and radiology services, but you'll also gain easy access to an entire network of professionals including our therapy services, Altru specialists and, through the Mayo Clinic Care Network, our colleagues at Mayo Clinic. All this and more from a single visit to Altru Clinic.

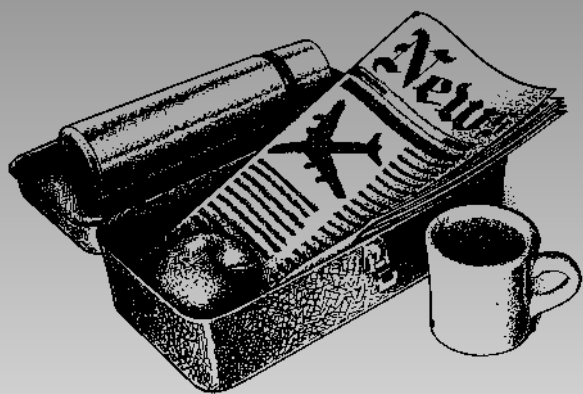
[altru.org/redlakefalls](http://altru.org/redlakefalls)

**MAYO CLINIC**

**CareNetwork**  
Member

312 International Drive, Red Lake Falls | 218.253.4343





# Your key to buy, sell or trade anything is the CLASSIFIEDS

**The members are invited to use this FREE WANT AD service.**

If you have anything to trade or sell, just drop a card to Red Lake Electric Cooperative, Box 430, Red Lake Falls, MN 56750.

## For Sale

**For Sale:** Purebred fawn colored Pug puppies. \$400. Kathy Mehrkens, 10994 140th Ave NW, Thief River Falls, MN 56750. 218-964-5624

## Real Estate

www.sollie.net • www.sollie.net

**JUST LISTED!**

**#3878 - Spacious Lot! Level Elevation!**

Sandy Beach! Newer Home! Storage sheds...Completes the Entire Package! Over 150 feet of level frontage on Island Lake complete with 2007 Fleetwood Home (like new) featuring 3 bedrooms and 2 baths. Along with 720 sq. ft. steel storage building and smaller shed providing a home for all of your lake toys and more!  
**CALL TODAY!**

**Sollie Realty, Inc.**  
Fosston, MN • (218) 435-1525  
www.sollie.net

www.sollie.net • www.sollie.net

## LUMBER AND Building Supplies



**ASK ABOUT  
OUR COMPLETE  
BUILDING PLANS  
SERVICES!**

We're glad to help you  
with any building problem  
you may have.

**Oklee  
Lumber, Inc.**  
**(218) 796-5131**

## Concrete Coatings & Repair

- Epoxy Coatings (colored chip & quartz)
- Decorative Concrete Overlays
- Concrete Polishing and Staining
- Concrete Densifier and Sealers

**Any concrete area needing a new appearance with a seamless and easy to maintain finish.**

- Shop/Garage and Basement Floors
- Commercial Kitchens and Retail Floors
- Patio, Driveway/Apron and Sidewalks

**Contact: Concrete Designs  
(218) 681-8004  
E-mail: epoxy@mncable.net**

**DON'S  
MACHINE SHOP**  
ASE CERTIFIED REBUILDERS  
ALL GAS AND DIESEL ENGINES

**PRICE  
EXAMPLES:**  
•GM 350 \$1,315 - \$1,419  
•GM 6.5 Diesel with new block \$5,330  
•Ford 7.3 Diesel Powerstroke \$4,200  
All prices are with exchange on a rebuildable core.

- Automotive •Industrial
- Marine •Agricultural
- High Performance
- Vintage Auto
- Heavy Duty Diesel

**CALL FOR ESTIMATE!  
INSTALLATION AVAILABLE**

**FOSSSTON, MN  
218-435-6379 or  
1-800-448-1518**

## Help Wanted

### Red Lake County Cooperative Agronomy Department Full-Time Position

Competitive Pay, 401K, Health and Dental Insurance, Profit Sharing, Bonus Program, Vacation and Sick Pay. Person must be able to pass a pre hire drug test and have a clean driving record

Send Resume to: Doug or Michele  
Red Lake County Cooperative  
PO Box 37  
Brooks MN 56715  
or stop by the fertilizer Plant in  
Red Lake Falls or  
the Office in Brooks



Electrical  
Contractor

Shop: (218) 253-4123  
Home: (218) 253-4127

### KEN'S ELECTRIC, INC.

Red Lake Falls, Minnesota 56750

"We Service Our Work"

Contact Us For All Your Electrical Needs!

Allen Remick - Cell: (218) 689-0313  
Jason Knott - Cell: (218) 289-5104

**We Buy Cars and Car Bodies**

**We Sell Welding Supplies**

**Roll-Off Boxes Available**

**We Buy Aluminum Cans**

**We Sell New Steel - Structural and Sheet**

**We Buy Scrap Iron and Metals**

**Evans Scrap & Steel, Inc.**

218-681-3488 • Toll Free 1-800-906-3488  
13203 190th St. N.E. • Thief River Falls, MN

Winter Hours:  
7:30 - 4:30  
Monday-Friday

**Carpet ETC.** of St. Hilaire, MN

Flooring to Fit Every Lifestyle  
Carpet, Vinyl, Ceramic, Laminate

Quality Flooring at a price you can afford.

310 Broadway • St. Hilaire, MN • (218) 964-5555 • M - F 9:30 & Sat 9-3 • Anytime By Appointment

**TR SALVAGE INC.**

702 Dawn Ave.  
Thief River Falls, MN 56701  
218-681-8221 • 1-800-950-9917

Email: sales@trsalvage.com • Website: www.trsalvage.com

**NEW AND USED FARM EQUIPMENT PARTS**

**Midwest Roofing**  
Residential and Commercial

Licensed • Bonded • Insured  
**FREE ESTIMATES**

20061 Center St E (218) 681-3879  
Thief River Falls, MN 56701 (218) 686-4475

**Area Electrical Inspectors**

Any time an electrical circuit is altered or any new wiring is done, a request for electrical inspection must be submitted to the area electrical inspector.

**Inspectors for RLEC service territory include:**

**Scott Stenvik**  
Marshall and Penn. Counties  
218-689-5406

**Glenn Erickson**  
Pennington County  
218-689-3763

**Robert Orgon**  
Red Lake and Polk Counties  
218-556-3829

**Mark Smythe**  
Beltrami and Clearwater Counties  
218-751-0487

Online permits may be filed at:  
[www.dli.mn.gov/ccld/etrakit\\_electrical.asp](http://www.dli.mn.gov/ccld/etrakit_electrical.asp)

**BRIAN SCHAFFER**  
218-289-5430  
CELLULAR

**MIKE SCHAFFER**  
218-289-5431  
CELLULAR

16483 120th Avenue SW  
Red Lake Falls, Minnesota 56750  
Office 218-253-2497

COMMERCIAL TRENCHING RESIDENTIAL FARM

**Erickson Dozer & Excavating**  
"For Any Kind Of Dirt Work or Construction Job!"

Bull Dozing • Excavating • Skid Steer Service  
Mowing • Brushing • Finish Grade Work  
Site Prep Work • Culvert Install • Basements  
Ditch Cleaning • Grubbing Tree Rows  
Old Building Site Clean Up

25 Years Experience  
Fully Insured  
Black Dirt & Gravel Available  
Custom Farming & CRP Break-up & Clean-up  
Demolition

**Eric Erickson**  
**218-686-8720**  
Erskine, MN 56535

**KEZAR Music**

Joel Kezar, Owner  
Milo Ballingrud, Sales

Store Hours: Monday-Friday 8 A.M. - 6 P.M. Saturdays 10 A.M. - 5 P.M.

Buy • Sell • Trade • Rentals  
New & Used Instruments  
Repairs • Sound & Lighting • Installations  
Recording Studio • Lessons • Print Music

315 Duluth Avenue N. Thief River Falls 681-2148 • 1-800-566-2148  
kezarmusic@mncable.net www.kezarmusic.com

**HELP! HELP! HELP!**  
"My basement is wet! Who do I call?"

**RADNIECKI'S**  
Classic Cleaner

☒ Carpets ☒ Pet Stains  
☒ Upholstery ☒ Odor Control  
☒ Ceilings & Walls ☒ Air Duct Cleaning  
☒ Emergency Water & Smoke Damage

Call: **(218) 681-7679**

**And for all your cleaning needs call 218-681-7679**

**Turn your junk into cash!**

**www.luckentrucks.com**

State certified scale  
get paid what you deserve

Car Crushing & Tin Bailing  
Lugger & Container Services

We buy anything from cars to combines, including the kitchen sink and everything in between...

**We want your scrap!**

**You call. We haul.**  
**Call 1-800-874-4107**  
\$\$\$ Cash \$\$\$ Cash \$\$\$ Cash \$\$\$

**Lucken Corp.**

23125 430th St. SE, Winger, MN 56592  
jeff@luckentrucks.com or john.lucken@luckentrucks.com

- Prepared Steel
- Unprepared Steel
- Unstripped Motors
- Tin
- Car Bodies
- Batteries
- Brass
- Alum. Trans.
- Radiators
- Die Cast
- Stainless Steel
- Aluminum
- Copper
- Lead

**Late Model Auto Parts**

**-National Parts Locator-**

Toll Free 1-888-560-5321  
Bus: 218-964-5321

**WE BUY PARTS CARS!**

20 Bakers St., St. Hilaire, MN  
Jeff Brouse & Brian Bugge, Owners

**B & B Auto Recycling, Inc.**

**KM Transmission**  
And Repair

Quality • Experience  
Dependability • Honesty

**Fair Prices**  
It's all just that simple. Keith Moen

Mon. - Fri. 8:00 am to 5:00 pm  
Sat. by appointment

**(218) 681-4250**  
616 Davis Ave. N, Thief River Falls

Red Lake Electric Cooperative

**Want Ad Order Form**

Use this handy form to submit your want ads.

**PLEASE PRINT.**

Mail or bring your ads to the RLEC office by the tenth of the month. Commercial ads are 10¢ per word with a minimum charge of \$4 per insertion.

Member want ads are FREE. One want ad per member per month.

**Please PRINT . . .**

Your Name, Address and Phone Number. Mail with your power bill payment, if you prefer, or fax to 218-253-2630.

**AFTER-HOURS OUTAGE PHONE 218-253-2200**



# We can help with a WET BASEMENT

## Book now for

# 10% off

## Carpet Cleaning

**Great for graduation, Christmas,  
birthdays, Thanksgiving**

**Free Estimates  
in NW Minnesota  
Satisfaction  
Guaranteed**



## Kilen's Custom Cleaners

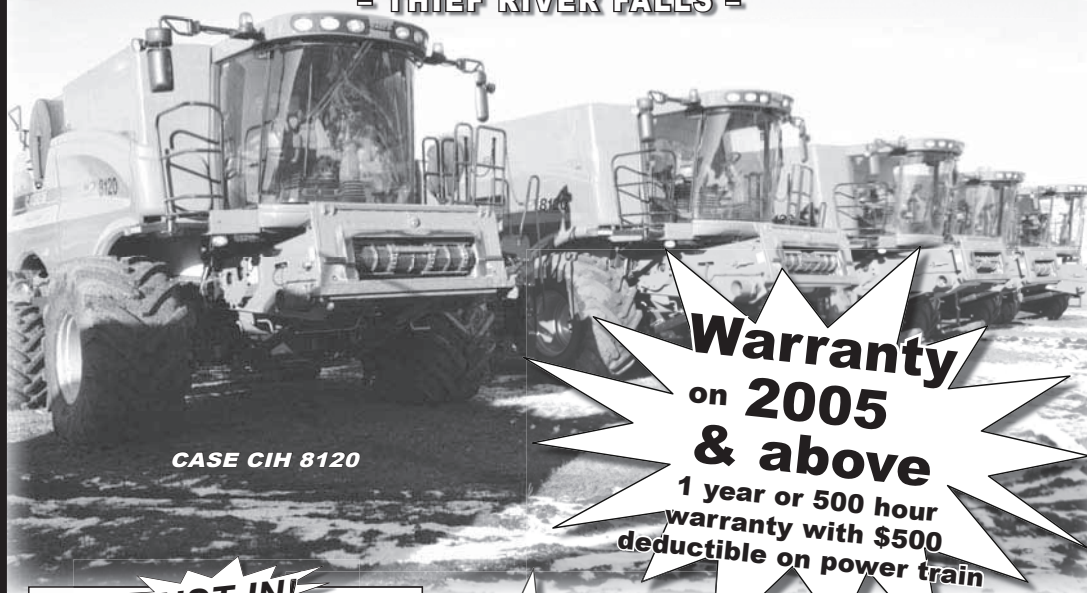
**Achieving Excellence One Customer At A Time**

**(218) 681-3911**

**www.kilenscustom.com**

# Titan Machinery

- THIEF RIVER FALLS -



CASE IH 8120

**Warranty  
on 2005  
& above  
1 year or 500 hour  
warranty with \$500  
deductible on power train**

**JUST IN!**

**INTEREST WAIVED  
FOR  
12 MONTHS  
on 100 HP & LARGER  
TRACTORS &  
COMBINES**

TAG #	MODEL	YEAR	MEG	SERIAL #	SEPARATOR MSR	RETAIL PRICE
2363315	AF8120	2012	Case IH	YCG214659	352	320,000.00
2363387	AF8120	2012	Case IH	YCG214633	282	320,000.00
2363443	AF8120	2012	Case IH	YCG214647	281	320,000.00
2363489	AF8120	2012	Case IH	YCG214595	341	320,000.00
2363542	AF8120	2012	Case IH	YCG214576	343	320,000.00
1267167	AF8120	2011	Case IH	YAG210876	400	320,000.00
2363324	AF8120	2012	Case IH	YCG214657	680	295,000.00
2363452	AF8120	2012	Case IH	YCG214675	640	295,000.00
2363517	AF8120	2012	Case IH	YCG214621	631	295,000.00
2363575	AF8120	2012	Case IH	YCG214619	631	295,000.00
1297332	AF8120	2010	Case IH	Y9G208100	963	265,000.00
2958593	595R	2007	Caterpillar	57900362	1363	200,000.00
1523445	2388	2001	Case IH	JJC0273327	1920	100,000.00
1784851	CR960	2005	New Holland	HJA101831	3807	100,000.00
1784876	CR960	2005	New Holland	HJA101635	4403	100,000.00
1523472	2388	2001	Case IH	JJC0270835	2873	90,000.00
2966908	1680	1992	Case IH	JJC0117792	3280 Eng. Hours	17,500.00



NEW  
HOLLAND  
960

**High  
Quality New & Used  
Equipment**



**To  
Choose  
From**



595 CAT



**Stop in & see  
Jay, Mark  
or Steve  
for all your  
equipment needs.**



# TITAN MACHINERY

**CASE IH**  
AGRICULTURE

Hwy. 59 North  
Thief River Falls, MN  
www.titanmachinery.com

Toll Free: **1-800-888-2744**  
Phone: **218-681-1423**

**Wristbands:**  
Adults \$10  
Under 21 \$5

## Summerfest 2013 Red Lake Falls July 26 & 27, 2013



### Friday, July 26<sup>th</sup>

5:00 pm Walleye Supper @ American Legion Club  
6:00 pm Little Miss & Junior Miss Summerfest Pageant @ City Hall Auditorium  
6:30 – 8:00 pm Scavenger Hunt – Front Steps of St. Joseph Church  
(2 age groups: 8–12 & 13–18, \$300 in prizes)  
9:00 pm – 12:00 am Teen Dance @ Band Shell – \$5 Admission

### Saturday, July 27<sup>th</sup>

7:00 am – 12:00 pm City Wide Rummage Sale  
8:00 am Lion's 5K – 10K Run/Walk – Registration 7:00 am at Voyageur's View  
8:00 am 3<sup>rd</sup> Annual Simon Schmitz Softball Slam – Softball Fields  
9:00 am – 12:00 pm Lion's French Toast Breakfast @ American Legion Club  
10:30 am – 5:00 pm 1<sup>st</sup> Annual American Legion Motorcycle Run - \$10 Registration @ Legion  
11:00 am Kid's Games – sponsored by Women of Today @ Riverside Park  
12:00 – 6:00 pm Classic Car Show – downtown  
1:00 pm Community Band Concert – downtown  
1:00 – 5:00 pm Fun & Games at the RLF Swimming Pool  
2:00 pm Bean Bag Toss and Washoo Tournament – downtown  
12:00 – 2:00 pm Bingo @ American Legion Club  
2:00 – 6:00 pm Box Maze Adventure @ LHS Gymnasium Stage (\$3 unlimited)  
5:00 pm – 1:00 am Beer Garden – sponsored by TnJ's Bar & Supper Club  
5:00 – 8:00 pm Turkey Supper by TnJ's @ Community Hall Basement  
7:00 pm Miss Tootsie Contest @ City Hall Auditorium (\$3 Admission)  
9:00 pm – 1:00 am Dance to "Work Release" – sponsored by Thibert Chevrolet & Buick

**Climbing Wall sponsored by MN National Guard**

**Boy Scouts Dunk Tank**

**Oof Da Tacos • Triple C Concessions • Boy Scouts Ice Cream Stand**

Summerfest Sponsors:

Unity Insurance • Phil'er Up Storage • Otter Tail Power Co. • Johanneck Plumbing & Heating  
Johnson Funeral Home • Unity Bank North • Chateau Motel & Liquor • Northwest Manufacturing  
Red Lake County Insurance • Gunder Austad Post 22 • Red Lake County Cooperative  
Muldoon Law Office • Eckstein's Sanitary Service • Dan's Trucking • Schafer Electric  
Red Lake Co-op Federal Credit Union • Red Lake Falls Veterinary Clinic • Lambert Insurance  
Thibert Chevrolet & Buick • Garden Valley Telephone Co. • Alcorn Dentistry  
Red Lake Falls Civic & Commerce Association

## AUTO PAY OFFERED BY RLEC

Red Lake Electric Cooperative is pleased to offer you Auto Pay. Now you can have your monthly energy bill paid automatically from your checking or savings account. You can receive the Auto Pay service by completing the Auto Pay sign-up sheet and returning it to Red Lake Electric Cooperative.

The Auto Pay service is free of charge. Not only is this service free, you will eliminate the expense of writing a check, postage to mail your payment and no more late payment penalties because your bill will be paid on time, every month, for you.

Your payment will be automatically made for you on the 5th of each month. If the 5th

falls on a weekend or holiday, the payment will be made on the next business day. You will continue to receive your monthly energy bill as you have in the past, indicating the amount that will be withdrawn from your bank account. The proof of your payment will appear on your bank statement and your next month's energy bill statement.

**Continue to pay your monthly bill until you are notified on your bill that the Auto Pay has been set up for you.**

If you have any questions about the Auto Pay please call RLEC at 800-245-6068 or 218-253-2168.

## AUTO PAY SIGN-UP SHEET

I authorize Red Lake Electric Cooperative (RLEC) and the bank listed below to initiate variable entries to my checking or savings account. This authorization remains in effect until I notify RLEC in writing to cancel it in such time as to allow RLEC to act on it.

RLEC ELECTRIC ACCOUNT # \_\_\_\_\_

NAME (PRINT) \_\_\_\_\_

ADDRESS \_\_\_\_\_

TELEPHONE # \_\_\_\_\_

NAME OF FINANCIAL INSTITUTION \_\_\_\_\_

CHECKING ACCOUNT # \_\_\_\_\_

SAVINGS ACCOUNT # \_\_\_\_\_

SIGN HERE TO AUTHORIZE \_\_\_\_\_

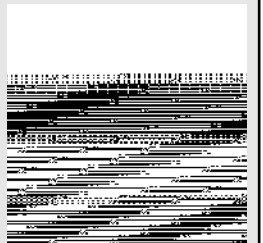
Please return this authorization form with a blank, voided check to:  
Red Lake Electric Cooperative, P.O. Box 430, Red Lake Falls, MN 56750



## Red Lake Electric Cooperative, Inc.

*One of the Minnkota Power Systems*

Phone 218-253-2168  
Toll-free 1-800-245-6068  
Fax 218-253-2630  
After-hour outage 218-253-2200  
Office hours Monday-Friday, 8:00-4:30  
E-mail: redlake@minnkota.com  
Web site www.redlakeelectric.com



**Call Before You Dig - Gopher State One Call • 1-800-252-1166**

P. O. Box 430 • 412 International Drive SW • Red Lake Falls, MN 56750-0430