



# Volts and Jolts

Published monthly for the members of  
**RED LAKE ELECTRIC COOPERATIVE, Inc.**

*One of the Minnkota Power Systems*

**SERVING THE FOUR-COUNTY AREA OF MARSHALL, PENNINGTON, RED LAKE AND POLK**  
*and a portion of the lands of the Red Lake Band of Chippewa*

VOL. 50 – NO. 9

RED LAKE FALLS (RED LAKE COUNTY), MINNESOTA 56750

JULY 2015

## Minnkota first to submit successful electronic mercury report



Minnkota recently learned that the Milton R. Young Station was the first plant in the country to successfully submit a Mercury and Air Toxics Standards (or MATS rule) Electronic Data Report (EDR) to the EPA. Although station environmental personnel have been submitting required quarterly EDRs for the Young Station for many years, the MATS rule caused some difficulty in this normally routine data reporting process.

The MATS rule required numerous changes to the Young Station's emissions monitoring plan and updates to the data acquisition and handling system (DAHS) for the continuous emissions monitors (CEMS). Plant personnel did substantial work to ensure that the Mercury and Particulate CEMS were properly certified and recording valid data prior to the compliance date.

Coordination with Babcock and Wilcox, our DAHS vendor, was also necessary to update

the plant's monitoring plans, certification records and emissions files. The submittal of a successful EDR is contingent on all of these factors. The EDRs were submitted on April 15 for Unit 1 and on April 16 for Unit 2, and include data from the first quarter of 2015.

Of course, the other critical requirement of the MATS rule is to actually meet the emission limits set forth in the rule. The mercury control project for the station included the installation of powdered-activated carbon (PAC) and halide injection systems on each unit. These systems were started up earlier this year, and have been successful in bringing the plant into compliance with required mercury emission limits. The mercury control projects were coordinated by the plant engineering group, with some valuable support from other plant departments.

"It's a remarkable achievement to submit the first compliant EDR in the country," said Craig Bleth, Young Station's engineering and envi-

ronmental manager. "Many plant personnel have been focused on installing effective mercury control systems, and making sure that we're able to accurately measure and report our mercury emissions."

### In this month's *Volts and Jolts*

**Page 2**  
Manager's Comments

Energy efficiency rebates available

**Page 3**  
Recipe Corner

From the Mail Bag

**Page 4**  
Feature of the Month:  
*Sunrise Farm*

**Page 5**  
Power Savers Rebates

**Page 8**  
Pole Inspections Begin

## Pole-top rescue training

As part of Red Lake Electric Cooperative's (RLEC) commitment to safety, office and line crew personnel undergo safety training on a regular basis. Luke Wilhelmi, safety instructor from Minnesota Rural Electric Association (MREA) was at RLEC's headquarters on July 9 to lead the discussion of pole-top rescue.

Once a year, RLEC linemen review and practice their skills, assisting a co-worker who has been injured, or worse, from a power pole or bucket truck. Red Lake Electric linemen test their skills by securing and lowering a 200lbs. practice dummy from a pole to the ground where co-workers are prepared to provide emergency care until emergency officials arrive on scene.



To the right: Darcy Cardinal, journeyman lineman, secures 200 lbs. practice dummy from the power pole to begin lowering the victim to the ground.



Lineman Aaron Derosier, begins to administer CPR while waiting for emergency officials to arrive on the scene.

## North Dakota shines in state of the air rankings

The American Lung Association's State of the Air Annual Report for 2015 gave North Dakota "A" grades for lack of ozone, also known as smog, and for lack of particulates, also known as dust.

The American Lung Association has compiled the annual report each of the past 16 years, using local data that is submitted to the United States EPA. This year's report covers the years 2011 to 2013.

In addition to the high state ranking, Bismarck and Fargo were among the top 20 cleanest cities in the nation for year-round particulate emissions. The two also were among top-ranked cleanest cities for ozone.

Also receiving A grades were Oliver County, home of Minnkota Power Cooperative's

Milton R. Young Station, and Mercer County, home of the Coyote Station that supplies power to the Northern Municipal Power Agency. Minnkota is operating agent for NMPA. "North Dakotans breathe some of the cleanest air in the United States, in part because of emissions control technologies at the state's coal-based power plants," said Jason Bohrer, president and CEO for the Lignite Energy Council.

Utilities in North Dakota have invested more than \$2 billion in technology to protect the environment and spend about \$100 million annually to operate it. In the last decade, three of the seven power plants have invested more than \$800 million in emissions control technologies.

"The lignite industry has been a good neighbor in North Dakota," Bohrer said. "The mines and plants are responsible for more than 15,000 jobs in North Dakota, \$3 billion in total business activity, \$100 million annually in state taxes while providing clean, affordable energy to more than two million people in the Upper Midwest while ensuring that mines and plants are compatible with federal and state environmental standards."

The American Lung Association is not alone in its assessment of North Dakota's air quality. The EPA has also designated North Dakota as one of only seven states to meet all of the nation's strict federal ambient air quality standards.

## Install off-peak electric heating equipment and receive off-peak incentive

New off-peak electric heat equipment purchased and installed by December 31, 2015 qualifies for an off-peak electric heat rebate

Members will receive \$20 per kilowatt (kW) for qualifying electric heating equipment with a maximum incentive of \$600. The electric equipment must be part of an off-peak heating system with a qualified backup heating source. The equipment must be hard wired.

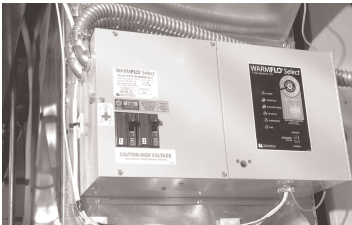
Heat pumps may also qualify for the incentive. Air-source heat pumps will receive a \$100 per ton incentive. Groundsource heat pumps will receive a \$200 per ton incentive. Heat pumps do not have to be controlled as part of an off-peak system. Any resistance or strip heat as part of a

ground-source heating system must be controlled. The maximum incentive for heat pumps is \$600.

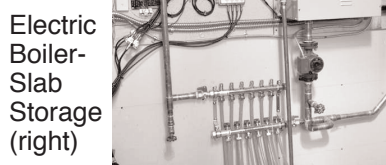
This off-peak electric heat installation incentive is in addition to the conservation incentives offered as part of the Cooperative's Power Savers Program.

In the wake of rising and fluctuating fossil fuel prices and with this (1209005.02 Gordon Peterson) electric heating equipment incentive, now is a great time to install off-peak electric heat.

Equip your home or place of business with a dual-fuel heating system and be set for heating seasons of the future. Call Red Lake Electric Cooperative at 253-2168 or 800-245-6068 for more information.



Electric Plenum Heater (above)



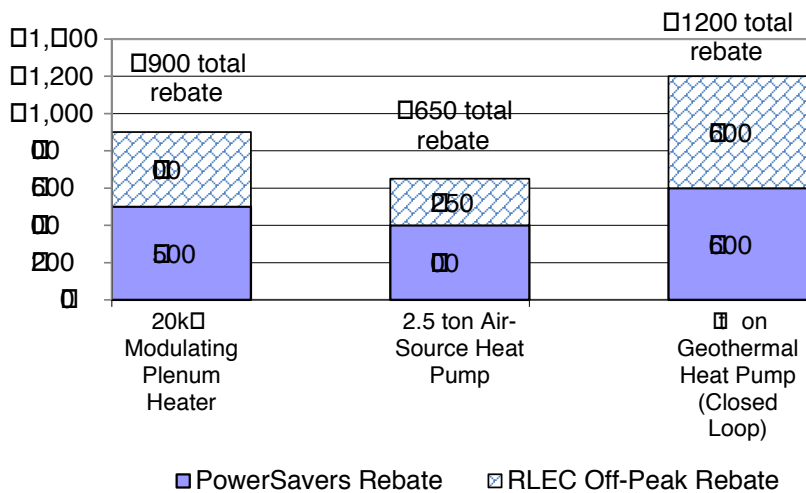
Electric Boiler-Slab Storage (right)

### QUICK TAKES

A look at some statistics from your Red Lake Electric Cooperative

Red Lake Electric Cooperative promotes the use of electric heat by offering rebates to customers who install new equipment that are qualifying products. PowerSavers HVAC rebates are based per unit with the exception of the ground source heat pump rebate which is based per ton. Red Lake Electric's Off-Peak incentive will receive \$20 per kW on electric heating equipment, \$100 per ton on airsource heat pumps and \$200 per ton on ground source heat pumps. Call us today at 1-800-253-6068 or 218-253-2168 if you have any questions on how to qualify for rebates

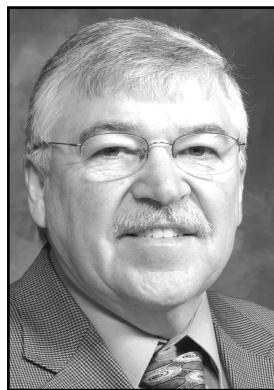
### Red Lake Electric Cooperative Rebates



## Qualifying electric heating equipment

- Baseboard Heater
- Boiler
- Cove Heater
- Forced Air Furnace
- Plenum Heater
- Unit Heater
- Radiant Underfloor Heat
- Slab Storage - Electric Cable
- Slab Storage - Electric Panels
- Slab Storage - Electric Boiler
- Air-Source Heat Pump
- Ground-Source Heat Pump
- Electric Thermal Storage (ETS) Furnace and Room Units





## Manager's Comments

by Roger Johanneck



## Energy efficiency rebates available

We've dedicated a good share of space in this issue of the Volts and Jolts to information about incentives available to Red Lake Electric Cooperative members for energy efficiency upgrades to your home or business. There is money to be saved for members of Red Lake Electric a few different ways: 1) Rebates offered through the Minnkota Power Systems - Power Savers program 2) Rebates offered by Red Lake Electric and 3) energy savings from the use of more efficient equipment. There may even be other ways that members can benefit if you qualify for federal tax credits on certain equipment upgrades; those incentives can be found by searching [www.energystar.gov](http://www.energystar.gov).

In addition to the information you will find in our newsletter this month, our website at [www.redlakeelectric.com](http://www.redlakeelectric.com) also contains information on available rebates, rebate forms and other tips we think you'll find helpful in your evaluation of energy efficiency

upgrades.

When most of us consider ways to reduce our energy needs and thus our monthly bills, it boils down to two different paths we can take: 1) conservation or 2) energy efficiency.

1) Conservation requires that we make some sort of life style change like shutting off lights in a room that is unoccupied, turning off the TV when no ones around to watch it, lowering our thermostat setting in winter or raising thermostat settings in summer. While reminding the family to turn lights and the TV off or adjusting the thermostat settings might not be the most popular way to conserve energy, it is an effective one. It requires no outlay of money to implement and it lowers the monthly energy bill.

2) The second approach is to buy equipment that uses less energy than the equipment you currently have. The hard part is the upfront investment of cash that you need to make. That is where the rebate

incentives offered through Red Lake Electric can help. Each evaluation and payback varies depending on the equipment you will be replacing. A rule of thumb for paybacks often used is if it pays for itself in ten years or less, it makes sense to upgrade.

Long-time members of the Cooperative will recall earlier rebate programs at Red Lake Electric. Various promotions have come and gone just as these rebates will have a sunset. Currently the Red Lake Electric rebate program is approved to run through the end of 2015.

I encourage you to take advantage of these incentives if your heating, cooling or lighting systems are in need of replacement or are just not up to today's efficiency standards. There is a lengthy list of rebates and incentives for both our commercial and residential customers to consider. Call us if we can help in any way with your evaluation.

## Look up for hazards during harvest

After working in a field on a neighbor's farm, Jim Flach parked his equipment and stepped out of the vehicle. Sadly, Jim did not realize his equipment was touching an overhead power line, and he became a path for the electrical current as he placed his foot onto the ground. Jim received a severe electric shock that ultimately resulted in his death a few months later. Safe Electricity urges farmers to take the proper precautions when working around power lines.

"The rush to harvest can lead to farmers working long days with little sleep," cautions Kyla Kruse, communications director of the Energy Education Council and its Safe Electricity program. "It is important to take time for safety. Before starting work, make sure to note the location of overhead power lines."

To stay safe around over-

head power lines, Safe Electricity urges farm operators and workers to:

- Use a spotter when operating large machinery near power lines.
- Use care when raising augers or the bed of grain trucks around power lines.
- Keep equipment at least 10 feet from power lines — at all times, in all directions.
- Inspect the height of farm equipment to determine clearance.
- Always remember to lower extensions when moving loads.
- Never attempt to move a power line out of the way or raise it for clearance.
- If a power line is sagging or low, call Red Lake Electric Cooperative.

If contact is made with a power line, stay on the equipment. Make sure to warn others to stay away, and call 911. Do not leave until the utility

crew says it is safe to do so. The only reason to exit is if the equipment is on fire. If this is the case, jump off the equipment with your feet together, without touching the ground and vehicle at the same time. Then, still keeping your feet together, hop to safety as you leave the area.

Some additional safety tips from Safe Electricity include:

- Do not use metal poles when breaking up bridged grain inside and around grain bins.
  - Always hire qualified electricians for any electrical issues.
  - Do not use equipment with frayed cables.
- "You need to double check, even triple check, to see what is above you," says Marilyn Flach, Jim's widow. His son Brett adds, "Be conscious of your surroundings. You need to keep your eyes open and beware of overhead lines."



**Red Lake Electric Cooperative, Inc.**

*One of the Minnkota Power Systems*

## Things you should know about your electric service

### BILLINGS AND COLLECTION

You will receive your energy bill on or near the 10th of each month. Payment of your monthly energy bill is due on the 10th of the month. You may pay your bill in person at RLEC during office hours, use the 24-hour drive-up drop box located next to the RLEC office, by Auto Pay, by mail or by Bill4U on [www.redlakeelectric.com](http://www.redlakeelectric.com).

Payment must be in our office or in the mail as evidenced by the postmark on or by the 25th day of the month to avoid a late payment charge. A 1 1/2% monthly late payment charge will be computed on delinquent energy bills; the minimum late payment charge will be \$1.00.

If your payment is not received by the end of the month a notice of disconnection statement will be included in the message area on your following energy bill. The disconnection statement will give a final notice of when your electric service will be disconnected if the delinquent amount remains unpaid. If an employee is sent to disconnect your electric service a \$60 collection fee will be charged to your account, even if you pay the collector.

To have a disconnected service reconnected, all amounts owing including the \$60 reconnection fee and a security deposit must be paid. If the service must be reconnected after normal working hours a \$120 reconnection fee must be paid.

### BAD CHECKS

A \$15 charge will be levied each time a check is returned because of nonsufficient funds, account being closed or payment stopped along with any applicable bank charges.

### OUTAGES

In case your electricity goes out, please do the following:

1. Check your fuses or breakers at the yard pole or meter pedestal.
2. Call your neighbor to see if they are out of electricity also.
3. Call the RLEC office (218-253-2168 or 1-800-245-6068) during working hours or 218-253-2200 after hours.

### METER TESTS

RLEC has a schedule in place to have its meters periodically tested for accuracy. Results from these tests show that meters generally slow down with age; however, if you think that your meter is recording too much usage, RLEC will test it for accuracy. You must pay a test fee in advance of the test. If the meter test shows that the meter was inaccurate, the test fee will be refunded to you.

### STOPPED METERS

If you find your meter has stopped and you are using electricity, please contact the office immediately so we can replace it. Average consumption will be billed to the member for the time the meter was stopped so there is no advantage in not reporting a stopped meter.

### METER READINGS

An automated meter reading system is utilized to obtain monthly meter readings. Although the system is normally reliable, that is always a chance that the correct reading has not been transmitted to the office for billing. Customers should periodically read their meter and compare it to the reading on the billing statement. If the actual reading is not close to the billing statement reading, please call the office. Keep in mind that the reading on your bill is from the end of the month.

### GENERAL SERVICE RATES

Facilities charge variable \$27 to \$35 month  
 April-December . . . . . 9.5¢ Kwh  
 January-March . . . . . 9.9¢ Kwh  
 Long term off peak . . . . . 5.5¢  
 Short term off peak . . . . . 7.5¢  
 Off-peak equipment charge, \$5.50/month per heat meter.  
 Multiphase users add \$22/month cost of service charge.  
 Standby, \$12/month (meter disconnected but the power line remains; standby is not available on services larger than 15 KVA transformer capacity).  
 Security light: LED, \$8/month; High pressure sodium, \$8/month; mercury vapor, \$9/month; water heater flat credit, \$7/month (January-April billing).

## Farm equipment safety

Imagine that you are driving a combine to the field through a back gate when things come to a screeching halt. You look back to see what's stopping you only to discover that you're tangled in an overhead power line! What do you do?

First, DON'T climb out. Unless you're in immediate danger, stay where you are and call for help.

Most utility lines are uninsulated, bare wires. Do not let your body become a direct link between the power line and the ground. If you must leave the combine, jump as far away as you can, making sure that no part of your body touches the combine and the ground at the same time.

Once you're off the combine, do not go back until your local electric co-op disconnects the power line.

Every year, 62 farm workers are electrocuted in the United States. You don't want to be one of them.



## GOPHER STATE ONE CALL

Call before digging! It's the law!

**1-800-252-1166**

## Mission Statement

It is the mission of Red Lake Electric Cooperative to enhance the quality of life for people of our service area by consistently providing quality electric service and other valued services while holding our employees, our community and our environment in high regard.



**Red Lake Electric Cooperative, Inc.**

*One of the Minnkota Power Systems*

**RED LAKE ELECTRIC COOPERATIVE, Inc.**

**VOLTS & JOLTS**

(USPS 663-400)

Published monthly by the Red Lake Electric Cooperative, Inc., 412 International Drive SW, Red Lake Falls, Minnesota 56750-0430, in the interest of its members and others. Periodical Postage Paid at the U. S. Post Office in Red Lake Falls, Minnesota 56750. POSTMASTER, SEND ADDRESS CHANGES to Volts & Jolts, c/o Red Lake Electric Cooperative, Inc., P. O. Box 430, Red Lake Falls, Minnesota 56750-0430. E-mail: [redlake@minnkota.com](mailto:redlake@minnkota.com)

### OFFICERS AND DIRECTORS

PRESIDENT . . . . . Bonnie Christians  
 VICE PRESIDENT . . . . . Robert Finstad  
 SECRETARY-TREASURER . . . . . Mark Hanson  
 DIRECTORS . . . . . Kelly Lundeen,  
 Steven Linder, Peter Mosbeck,  
 Colette Kujava, Randy Versdahl,  
 Stacy Blawat

**Subscription Rate \$2.50 per year**

**After-hours**

**outage phone**

**218-253-2200**

## NOTICE

Hidden within the text of the articles of this issue of the Volts & Jolts are the names and account numbers of some RLEC members. They will appear within the articles in parenthesis as such (9999999.99 Roger P. Member). If you find your name and account number, clip it out and send it with your next payment. You will be credited with \$5 on your electric bill.

RED LAKE FALLS  
 Summerfest 2015  
 JULY 23-26

Thursday, July 23<sup>rd</sup>

5:30 -8:00 75th Anniversary of Thibert's Chevrolet Celebration - Classic Car Cruise Night  
 Everyone is Welcome!

Friday, July 24<sup>th</sup>

The Mobile Veterans Center from Duluth will be traveling around RLF

9:00 AM & on Carving Demonstrations - near Falls Building Center (Under the Tents)

5:30 PM Walleye Supper @ American Legion Club

6:00 PM Motorcycle Fun Run (leaves from TNJ's)  
 Contact Wayne Hanson at (218) 689-7804 for more information

7:00 - 9:00 Little Miss & Junior Miss Summerfest **Pageant** @ City Hall Auditorium

**Patío Bar** - Sponsored by Joe DiMaggio's

9:00-1:00 **Dance** @ Band Shell - "Fubonics" DJ Jesse Adelman ~Free Admission~ ♫

♫ Concessions - Triple C Concessions -

Saturday, July 25<sup>th</sup>

The Mobile Veterans Center from Duluth will be traveling around RLF

8:00 AM Lion's **5k-10k** Run/Walk - (Registration 7:00 am) at Voyageur's View

8:00 AM 4th Annual Simon Schmitz **Softball Slam** - at Softball Fields

♫ 8:00 - 11:00 RLF Fire Department **Breakfast** @ American Legion Club (free will offering)

9:00 - 2:00 **Flea Market / Vendor Show**- Park Place Mall

9:00 - 2:00 **Art-in-the-Parks** (Riverside Park and throughout Red Lake Falls)

9:00 - 6:00 **Carving Demonstrations** - near Falls Building Center (Under the tents)

10:30 -12:00 Registration for 3rd Annual American Legion Motorcycle Run

11:00 AM **PARADE** - Sponsored by the Lafayette High School Junior Class

12:00 PM 3rd Annual American Legion **Motorcycle Run** - \$10 Registration @ Legion

1:00 - 6:00 **Classic Car Show** - located on International Drive between Park Place Mall & Triangle Tire

♫ 12:30 - 3:30 Pie Social - Meeting Room @ Park Place Mall - Sponsored by St. John Lutheran Church

12:45 - 1:00 Mini Drumline - Performing at Riverside Park (4-6 Graders)

1:00 **Sharp Kid Games** @ Riverside Park - Sponsored by RLF Women of Today - Ages: Pre-K - 8 year olds

2:00 - 4:00 **Bingo** @ American Legion **\*\*All Ages Welcome\*\***

2:00 - 4:00 **Cake Walk** @ Park Place Mall - Sponsored by Bethany Lutheran Church

2:30 - 3:30 Scavenger Hunt - In front of the Band Shell @ Park Place Mall  
 (2 Age Groups: 8-12 & 13-18, prizes will be awarded!)

3:00 - 7:00 Live Entertainment - Eric Reitan at the Band Shell ♫

3:00 - 5:00 **Kubb Tournament** - Adults come try a fun game of Kubb! Prizes awarded

4:00 PM Kids **Bean Bag Toss & Washoo Tournament** (Ages 10 & Up) - Sponsored by Riverview Health

♫ 5:30 - 8:00 **Rib Cook-Off** @ Park Place Mall Parking Lot - Limited "Taste-test" tickets available.

7:00 PM **Live Auction** of Carving Creations - @ the Band Shell

All Day **Patío Bar** - Sponsored by Joe DiMaggio's

9:00 - 1:00 **Dance** to "The Roosters" Sponsored by Joe DiMaggio's ~Free Admission~ ♫

♫ Concessions - Memories Café - Triple C Concessions - Oofda Tacos - Girl Scout Float Stand  
 Extended hours inside & curbside (11am - 3pm) (4 - 8pm)

Sunday, July 26<sup>th</sup>

9:00 AM Bethany Lutheran Church - **Outdoor Worship** everyone is welcome! Bring a lawn chair

♫ 9:00 - 12:30 Catholic Daughters **Breakfast** @ St. Joe's Catholic Church Dining Area (free will offering)

Monday, July 27<sup>th</sup>

9:00 AM Shotgun Start KC Junior **Golf Tournament** - Ages 18 & under - Oak Knolls Golf Course \$10 Entry Fee

From the Mail Bag

Dear RLEC,  
Thank you for sponsoring my 4-H award.

Jack Dodson  
4-H Clover Bud  
Age 5

THANK YOU  
Jack

Dear RLEC,  
Thank you for donating to the 4-H Red Lake County Fair. I won a business award for my demonstration about geocaching.

Akayla Rondorf

Dear RLEC,  
Thank you for sponsoring the business awards for the Red Lake County Fair, I received an award for my demonstration on geocaching.

Kendra Rondorf

Dear RLEC,  
Thank you for the buisness award for my horse project and my vet science project. I brought my horse Honey, to the fair and made a poster on common horse diseases.

Thanks again,  
Sarah Quick  
Happy Go Lucky  
4-H Club

Dear RLEC  
Thank you for the money for my 4-H prodjects. It will help me exceed my goal of which will go towards the state fair.

Thanks again,  
Jacob Solie

Dear RLEC,  
I would like to thank the RLEC for this scholarship. I am honored to have received this scholarship. The money receive from this scholarship will help me further my education at UND.

Thank you again,  
Noah Peters  
Viking

Dear RLEC,  
Thank you for awarding me a scholarship. It was greatly appreciated and will be used toward my tuition for college. I will be attending NDSU in Fargo this fall. I plan to pursue as career as Physical Therapist.

Samantha Sjulestad  
Goodridge

Dear RLEC,  
Thank you for choosing for the \$500 scholarship. The gift will help when I attend UND this fall for Meteorology. I am excited to start and your gift

will help me.

Thanks,  
Nicholai Broekemier  
Crookston

Dear RLEC,  
Thank you for the demonstration award, sheep project award and the rabbi project award you gave me at the Red Lake County Fair. Thank you for supporting 4-H.

Bailey Culkins

Dear RLEC,  
Thank you for the donating the awards to the Pennington County 4-H herdsmanship program. They mean alot to the ones that receive them.

Emily Bakke  
Herdsmanship  
Coordinator

Dear RLEC,  
Thank you so much for awarding me the scholarship of 2015. I appreciate it very much and it will be put to very good use as I attend Bemidji State University in the fall for nursing!

Thank you so much!  
Mikayla Paradis  
Oklee

A change for the better

By Anne Prince

When it comes to energy efficiency in the home, sometimes small changes can make a big impact. A small, unglamorous task like changing the filters on your HVAC system makes your unit run more efficiently – keeping your house cooler in the summer and warmer in the winter. It also saves money. And the savings gained from having your system run more efficiently can be applied to more fun or entertaining pursuits that your family can enjoy together.

The slowdown on dirt As you move around your home, you drive dust into the air from carpets, furniture and drapes. Regardless of where it comes from, dust and dirt trapped in a system's air filter leads to several problems, including:

- Reduced air flow in the home and up to 15 percent higher operating costs
- Costly duct cleaning or

replacement

- Lowered system efficiency
  - Making the switch
- Now, that you know the facts, it's time to get busy changing or cleaning the air filter in your heating/cooling system. Many HVAC professionals recommend that you clean or change the filter on your air conditioner or furnace monthly. It's simple and easy, and in many cases, it only takes a few minutes.

Filters are available in a variety of types and efficiencies, rated by a Minimum Efficiency Reporting Value (MERV). MERV, a method developed by the American Society of Heating, Refrigerating and Air-Conditioning Engineers, tests filter effectiveness. The higher the MERV number, the higher the filter's effectiveness at keeping dust out of your system. While most types of filters must be replaced, some filters

are reusable. And don't forget about the winter months. Your heating system needs to work as efficiently as possible to keep you warm (and your loved one feeling snuggly), and a clean air filter helps it do just that.

Heating and cooling professionals recommend turning your system off before changing the air filter. Make sure that the arrow on the filter – which indicates the direction of the airflow – is pointing toward the blower motor. When you've made the change, turn your system back on.

A teachable moment Beyond saving money and improving the air quality in your home, changing your air filter is a great opportunity to teach your family more about energy efficiency. Consider getting everyone involved, and the entire family will learn how simple changes can make a big difference.

Stay safe from lightning - when thunder roars, go indoors

As the air is heated by the sun, energy is created with air movement, and lightning typically comes from towering storm clouds. Fortunately, accidents involving lightning are very avoidable. Safe Electricity has the following suggestions to stay safe from the dangers of lightning:

- There is no safe place from lightning when you are outside. It is important to be aware of weather forecasts and watch for developing thunderstorms, which occur more often in spring and summer.
- Lightning can strike many miles ahead of a storm front. If you hear thunder, seek shelter immediately, because that indicates lightning is within 10 miles of you. Safe shelters include inside a building or in an enclosed metal-topped vehicle.
- If you are inside a building, the National Weather Service advises you to stay off corded telephones, or away from any electrical device that could carry an electrical surge if lightning were carried into your home through wiring. Turn off or unplug such appliances, stay away from televi-

sion sets, and do not depend on surge protectors to absorb a lightning strike. Conductors can also include the plumbing in your house.

- Authorities warn against outdoor activity until 30 min-

Recipe Corner



**Skinny Poolside Dip**  
1 red pepper, diced  
2 jalapenos, diced and unseeded (of course, unless you want this to be a little on the spicy side, keep the seeds)  
1 can of corn, drained (if you can't eat corn, substitute black beans instead)  
1/2 can diced black olives (or green)  
16 oz fat free cream cheese, softened  
1 packet Hidden Valley Ranch dip seasoning

Mix the ingredients together and chill for a couple of hours overnight. Serve with crackers or raw veggies.

**Baked Chicken Parmesan**  
4 chicken breasts, fat trimmed, sliced in half to make 8  
3/4 cup seasoned breadcrumbs (I used whole wheat)  
1/4 cup grated Parmesan cheese  
2 tbsp butter, melted (or olive oil)  
3/4 cup reduced fat mozzarella cheese  
1 cup marinara  
Cooking spray

Directions: Preheat oven to 450°. Spray a large baking sheet lightly with spray. Combine breadcrumbs and parmesan cheese in a bowl. Melt the butter in another bowl. Lightly brush the butter onto the chicken, then dip into breadcrumb mixture. Place on baking sheet and repeat with the remaining chicken.

**Rhubarb Dump Cake**  
1 package yellow cake mix  
3-4 cups cut up rhubarb  
1 cup sugar  
1 4 oz package of Strawberry Jello  
1 cup water  
1/4 cup melted butter

Instructions  
1. Preheat oven to 350 degrees.  
2. Layer the cut up rhubarb in a greased 9x13 pan.  
3. Sprinkle the cup of sugar over the rhubarb and then sprinkle the strawberry jello on top of the sugar  
4. Pour the dry yellow cake mix over the rhubarb.  
5. Pour the 1 cup water over the cake mix and then lastly pour the melted butter.  
6. Do not stir.  
7. Bake at 350 degrees for 45-55 minutes or until bubbly and lightly browned.

**Slow Cooker Crack Chicken**  
2 lbs boneless chicken breasts  
2 (8 oz) blocks cream cheese  
2 (1 oz) packets dry Ranch seasoning  
8 oz bacon, cooked crisply and crumbled  
Instructions  
1. In a slow cooker combine place chicken, cream cheese, and Ranch seasoning.  
2. Cook on low for 6-8 hours or on high for 4 hours, until chicken shreds easily.  
3. Once chicken shreds stir with a large fork or spoon, so the chicken shreds and all the ingredients combine.  
4. Add in crumbled bacon and stir to incorporate.  
5. Serve warm.

**Cheesy Smoked Sausage Skillet**  
1 lb smoked sausage, sliced into 1/4-inch slices  
1 Tbsp olive oil  
3 cloves garlic, minced  
8 oz tomato sauce  
1 Tbsp tomato paste  
1 Tbsp Italian seasoning  
1 cup chicken broth  
1/2 cup heavy cream  
9 oz refrigerated cheese

tortellini  
1/4 cup parmesan cheese In a 12-inch skillet, brown sausage in olive oil. Add garlic and cook for 30 seconds. Stir in remaining ingredients. Bring to a boil then cover and simmer on low for 12-15 minutes. Serve with additional parmesan cheese, if desired.

**Classic Chicken Salad Wraps**  
2 cups cooked, shredded chicken  
1 cup chopped celery (about 2 stalks)  
1 cup halved red grapes  
1 green onion, thinly sliced  
1/2 cup pecan halves, roughly chopped  
1/2 – 3/4 cup mayonnaise  
2 tablespoons fresh dill, finely chopped  
1/2 teaspoon black pepper  
1/2 teaspoon salt  
Juice of 1/2 a lemon  
4 tortillas  
Place the chicken, celery, grapes, green onion, and pecans in a large bowl and stir to combine. In another bowl combine 1/2 cup of mayonnaise with the dill, black pepper, salt, and lemon juice. Pour the dressing over the chicken mixture and stir until coated. Give yourself a little taste and add more salt, pepper, and/or lemon juice as you please. You can also add another 1/4 cup of mayonnaise if you like your chicken salad to be thinner. Cover and refrigerate for at least a few hours or up to overnight to allow the flavors to combine, and serve wrapped inside tortillas.  
Notes: Save a step by picking up a rotisserie chicken from the store and shredding it up. The rotisserie chicken adds great flavor to the salad!

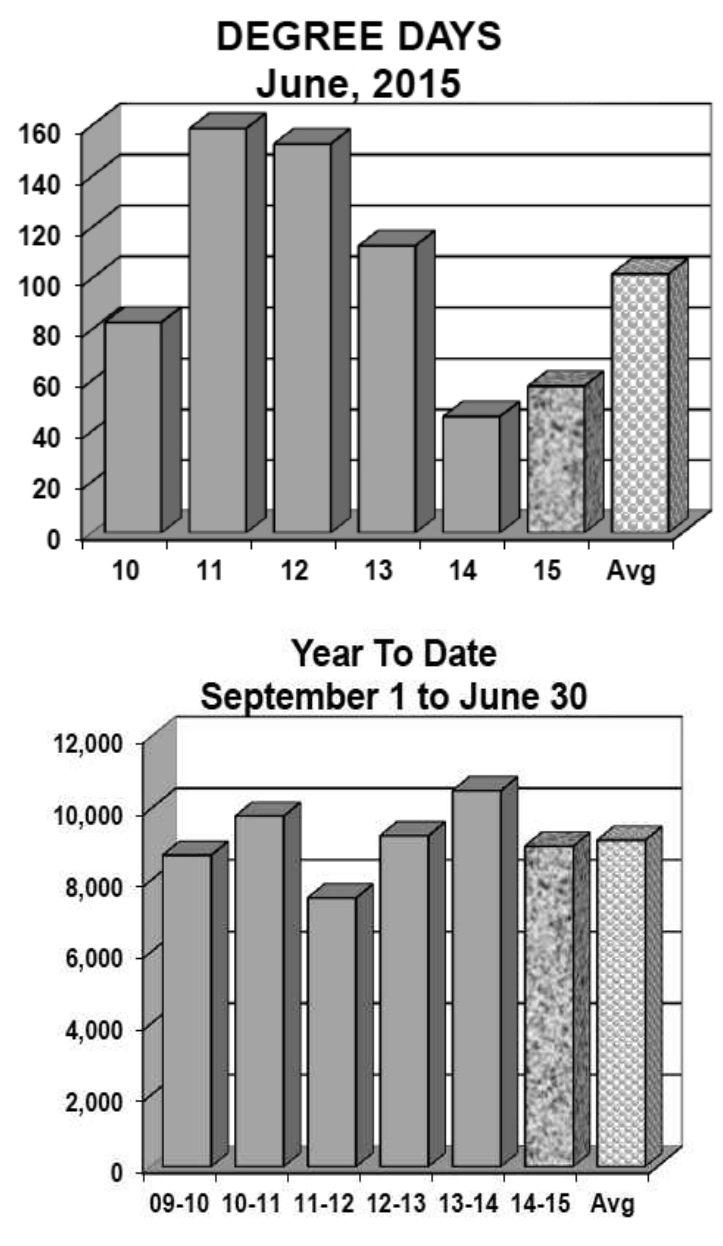
**ENERGY STAR**

**Look for the logo**

The ENERGY STAR logo is on all qualified products that meet specific standards for energy efficiency. ENERGY STAR-qualified products exceed the federal minimum standards for efficiency and quality—sometimes significantly. Look for the label on appliances, electronics, water heaters, windows, and other products that consume energy in your home.

# DEGREE DAYS

To determine degree days, you must calculate the daily mean temperature for the time period you are measuring. Degree day computation is based on the assumption that a building does not require any heat if the outside temperature averages 65 degrees during a 24-hour period. To obtain a degree day figure, the high temperature and the low temperature for the day are added and the total divided by two. That figure is then subtracted from 65. For example, if the high temperature was 30 degrees and the low temperature 10 degrees, the figure would be 30+10=40; 40/2=20; 65-20=45. This would be a 45-degree day. The higher the degree day figure, the more heat required to warm your home.



## EAGLE SQUARE

**\$1.00 OFF ANY CAR WASH**  
(Must Present This Coupon For Offer Offer Good Through Sept 30, 2015)

405 Bridge St NE, Red Lake Falls  
OPEN: Everyday 5:30 a.m. - 11:00 p.m.

**253-2995**

**Goodman**  
Air Conditioning & Heating

REFRESHINGLY AFFORDABLE  
**AIR CONDITIONING**  
Don't risk paying too much to keep your home comfortable. Compare quality construction, warranty protection\*, and the price of any Goodman® brand Air Conditioner. Then you'll discover why millions are saying, "Thank goodness for Goodman."

**Red Lake Falls  
218-253-4347**

**BILL J. MOSER**  
MASTER PLUMBER  
CFR 089400285  
PM061208

**BILL H. MOSER**  
MASTER PLUMBER  
PM058011

**Thank goodness for Goodman®**



Farmers Union  
Oil Company

Thief River Falls218-681-3512



- Fertilizer
- Petroleum products
- Town and country deliveries
- Tires, batteries, accessories
- Farm supplies

WILCOX PLUMBING  
AND HEATING, Inc.

RED LAKE FALLS

Plumbing/Heating/Air conditioning

BILL H. MOSER, Master Plumber  
License No. 1770PM

BILL J. MOSER, Master Plumber  
License No. 6039PM



- In-floor heating
- Oil furnaces
- Pressure systems
- Gas furnaces
- Electric heat pumps

FREE ESTIMATES  
COMPLETE SALES  
AND SERVICE

218-253-4347

Advertise  
here for just  
\$30/month!

Call  
218-253-2594  
to inquire

Security  
STATE BANK



- Operating loans
- Vehicle loans
- Farm real estate loans
- Consumer loans

"We appreciate your business."

218-796-5157  
Fax 218-796-5158  
anthony.holthusen@ssboklee.com



Each depositor insured to \$100,000





VOLTS AND JOLTS FEATURE OF THE MONTH

Welcome to Sunrise Farm

The barn, built in 1919, is tall and measures 34 feet by 70 feet. The barn now has a door on the lower level with the name of the farm painted along with a sunrise similar to that featured on the house.

**By Evelyn Glass**  
Minnesota has several farms that have received the honor of being designated as Century Farms. These are farms that have been owned and operated by one family and their descendants for one hundred years. This year THE SUNRISE FARM was added to this historical list. During the recent Goodridge Centennial/4th of July celebration a plaque was awarded to the Hanson family in recognition of this honor.  
1904 was the year Andrew Hanson first bought a quarter of land near a small town called Erie, Minnesota. His wife Ellen joined him later along with their son Justin and a niece, Oleen Kriel. Andrew

was from Telemarken, Norway and was living in the Leland, Iowa area when he learned of the area near what is now called Highland where land was selling at a price he could afford. In an area that had been part of the Indian Reservation he bought 160 acres for \$4.00 an acre. Erie was a small town with a post office, general store and a blacksmith shop in addition to the few families who lived there.  
When Andrew and Ellen had an exceptional harvest of flax they did not have a granary so needed to be resourceful in finding a place to store the crop. The flax was all put in bags and stored in the bedroom of the original house

until it was sold the next spring. Ellen was reported to have said she was certainly happy to have their bedroom back again. It was not an ideal place to store the flax but they did what they had to do.  
Andrew and Ellen farmed until 1941 when their son Justin and his wife Selma took over the farm. They farmed until 1953 when their son Orlin and his wife Marcella became the operators of the farm and they farmed until 1991. Then Dean and Dale assumed ownership of the farm. Orlin was the manager of the Goodridge Creamery from 1967-2004 and was succeeded by his son Dale who began working there in 1976 and is now the manager.  
Andrew and Ellen built their house in 1909. The house features an artful arrangement of siding at the peak on the east end that illustrates the theme of the farm, a sunrise. The siding noting the sunrise is painted red. The rest of the house is white with red trim. A two story house, its dimensions are 14 feet by 18 feet. Not a large house but it served the generations of the family until into the 1950s when a new house was built. The original house still stands as does the barn. The barn, built in 1919, is tall and measures 34 feet by 70 feet. The reason for its exceptional height is because the lumber yard sent out the wrong rafters. Rather than send them back Andrew decided to use them. The hay mow has a large door typical of that style of barn. The large door

was lowered and hay was pulled into the mow by means of rope slings and pulleys. The barn now has a door on the lower level with the name of the farm painted along with a sunrise similar to that featured on the house.  
Next to the barn stands a windmill that is taller than most, reaching above the barn and the nearby treetops. The brake is not working any longer and the fan is gone, however the wheel was merrily whirling around and around the day we were there. Beneath the windmill is the traditional pump jack that facilitated drawing water from the well. Not having electricity or motor driven machinery, horses provided the power to run the farm machinery and haul grain, etc. until 1950.  
Today, Dean and Dale Hanson great grandsons of Andrew and Ellen own the farm. Through the years more land has been purchased to enlarge the farm. Of the 800 acres, 750 of which are tillable, Ben, a Great-great grandson of Andrew and Ellen farms 440 acres and Dawn's nephew Ross Hegge rents 310 acres. Ben also teaches English in the Red Lake Falls Public School, is varsity coach for the girls' softball team and is director of the summer recreation program. Ross formerly was an agronomist for the Hallock-Humboldt CHS. Wheat and soybeans are the primary crops grown on the farm.  
Dale Hanson and his wife, Dawn live in Goodridge where

he manages the Goodridge Creamery, a Co-op that no longer buys cream or milk but sells, feed, seed and other farm supplies. Dawn does the books for the creamery and is a Synod authorized minister for three ELC churches in Gully and Trail. Dean and Dawn are the parents of six children: Ben, Clifton and his wife Cathryn have a daughter named Lorna, Andrew and his wife Kerin have two children, Brittany and Zane Hawk, Tiffany and

auctioneer was needed for different occasions he was selected to do the honors. The church would often have an auction for a fund raiser and Andrew was called upon to serve as auctioneer. He also served as a county commissioner.  
1949 was a year when they had an abundant harvest of flax. After the flax was sold for a total of \$10,000, Justin bought a new line of machinery. The tractor, combine and

Brothers, Dean and Dale Hanson assumed ownership of the farm in 1991. Pictured with the Goodridge Centennial Century Farm plaque is (left to right) Ross Hegge, Ben Hanson, Dean Hanson, Dale & Dawn Nelson.

Brian Barta who are expecting their first child, and Rachel and Drew Jaeger. Brittany was the first girl born in the Hanson family in one hundred years.  
Dean lives on The Sunrise farm. As you come to his home there is a cement step with lots of deer hoof prints. The step was once at the home of one of the family members and is a memorial of their pet deer.  
The farm had a dairy herd and milked cows until 1968 when the shift was made to all grain farming. In the early years cream and milk were sold at the Erie store. The store also bought the eggs they had for sale.  
Andrew had a strong voice so when an

other modern machines were welcome additions to the farming enterprise.  
The family is very involved in the Ekelund Lutheran Church located near the farm. Selma's Parents, Oscar and Helga Thoreson were charter members of the newly organized church.  
The family reminisced about the fun times they had and the many activities in which they were involved. Orlin was active in the Alton Skallet band and the Selma Ramsey band where he played guitar, fiddle and other instruments. 4-H was important to the children as they were growing up. Visiting with neighbors, going to Farmers Union activities and of course the sports programs in the schools were some of their activities as a family. Orlin was known as the man who attended all of the sporting events at the local school.  
The Red Lake Electric Cooperative brought electricity to the farm and made life a little easier because they had electricity for lights and to run their appliances. Along with running the motors needed to lift the work load on the farm, electricity was and is very much appreciated.

The Hanson family in Highland Township was recognized as a century farm on July 4 at the Goodridge Centennial celebration. Pictured from left are some of the farms owners: Andrew and Ellen Hanson bought a quarter of land in 1904; Justin and Selma Hanson, Justin being Andrew and Ellen's only child; Orlin and Marcella, Orlin being the only child.

Bray-Gentilly  
Mutual Insurance  
Co.

Locally Owned and Operated  
Serving Policyholders Since 1900

218-683-3200

2017 Hwy. 59 SE • P.O. Box 592  
Thief River Falls, MN 56701

INSURANCE FOR  
FARMS, HOMES  
AND PERSONAL  
PROPERTY

TELEPHONE US FOR AN  
AGENT NEAR YOU!

Advertise  
here for just  
\$30/month!

Call  
218-253-2594  
to inquire

Kilen's  
Custom

Commercial  
Residential  
Custodial



Specializing in  
Water, Fire & Soot Restoration

Jordan Kilen - Owner  
(218) 686-2591

Free Estimates

"Achieving excellence  
one customer at a time"

Want to cut your heating  
cost by up to 50%?

Buy a YORK Affinity  
heat pump today!



GROVE MECHANICAL, INC.  
Your hometown heating &  
air conditioning team!  
Serving Crookston and the surrounding  
communities for 30 years.  
(218) 281-3863

OFFICE PHONE  
253-2168

OUTAGE PHONE  
253-2200

1-800-245-6068

Red Lake Electric  
Cooperative, Inc.  
One of the Minnesota Power Systems



Power Savers program incentives continue

As a directive from the state legislature, Red Lake Electric Cooperative (RLEC) must spend money on conservation programs that yield electric energy savings. Energy conserved must equal 1.5 percent of the Cooperative's total annual kilowatt hour sales. To help meet this directive the Cooperative is offering Power Savers. This program offers incentives to implement conservation measures. Residential offerings span from a \$2 rebate on compact fluorescent lamps (CFL) to \$400 per ton on a geothermal, closed loop heat pump. Business incentives apply for lighting, air conditioning, air (2613001.02 Oliver B Urdahl) source heat pumps, geothermal heat pumps, chillers, motors, variable frequency drives, and Energy Star food service equipment. Rebate forms that list the offerings are posted on RLEC website, [www.redlakeelectric.com](http://www.redlakeelectric.com). The forms are also available from the Cooperative or local electrical and heating/cooling contractors. The accompanying tables list many of the incentives. Custom applications may also apply to business customers. Most energy conservation measures can be explored to see if the measure qualifies for an incentive. For additional information, contact RLEC at 253-2168 or 800-245-6068.

2015 Residential Incentives

Lighting <i>(Must be ENERGY STAR® or DesignLights Consortium™ approved.)</i>		
ENERGY STAR CFL Lamps		\$2/bulb <i>Max. 12 per customer</i>
ENERGY STAR LED Screw-In Bulb	In place of 40-60W incandescent.	\$4/bulb
ENERGY STAR LED Screw-In Bulb	In place of 65W or greater incandescent.	\$8/bulb
<i>Maximum of 12 per customer for LED screw-in bulbs.</i>		
ENERGY STAR LED Recessed Downlights	Complete fixtures or replacements kits.	\$8/unit
LED Outdoor Fixtures	LED fixture Wattage of <40 Watts. Must operate on a photocell and be DesignLights Consortium approved.	\$40/fixture
LED Outdoor Fixtures	LED fixture Wattage of >40 Watts. Must operate on a photocell and be DesignLights Consortium approved.	\$80/fixture
Appliances <i>(Must be ENERGY STAR approved.)</i>		
ENERGY STAR Refrigerator		\$25/unit
ENERGY STAR Refrigerator <i>(with recycling of old refrigerator)</i>		\$50/unit
ENERGY STAR Freezer		\$25/unit
ENERGY STAR Freezer <i>(with recycling of old freezer)</i>		\$50/unit
ENERGY STAR Clothes Washer		\$50/unit
ENERGY STAR Clothes Dryer		\$50/unit
Electric Water Heater	Minimum 80-gallon total capacity, EF ≥0.91. Must be controlled under the utility's load management program.	\$150/unit
Engine Block Heater Timer		\$10/unit
Heating, Ventilation Air Conditioning (HVAC) Measures		
Tune-Up for Residential Central A/C	Not valid on window units	\$25/unit
Tune-Up for Residential Air-Source Heat Pumps (ASHP)	Excludes mini-split ductless ASHPs	\$25/unit
ASHP	ENERGY STAR or 14.0 SEER / 8.2 HSPF	\$400/unit
Supplemental Heating Source for ASHP	Must modulate to allow ENERGY STAR-rated ASHP to operate down to 5°F, and be on load control	\$500/unit
Furnace (Air Handler) with ECM Blower	Furnace with ECM blower	\$150/unit
Mini-Split/Ductless ASHP	15 SEER	\$500/unit
Programmable Thermostat		\$25/unit

Geothermal Measures		
Ground-Source Heat Pump Open Loop <135,000 BTUH @ 59°F	16.2 EER /3.6 COP	\$200/ton <i>Max. incentive \$2,500/home</i>
Ground-Source Heat Pump Closed Loop <135,000 BTUH @ 77°F	14.1 EER /3.3 COP	\$400/ton <i>Max. incentive \$5,000/home</i>
<i>New installations only. Must be installed by a qualified, insured contractor. Must be the primary heating source for the home and be on a list of prequalified units. Water-to-water systems need the manufacturer's specifications indicating the equipment meets incentive requirements.</i>		
Replacement Geothermal		
Ground-Source Heat Pump Open Loop <135,000 BTUH @ 59°F	16.2 EER /3.6 COP	\$100/ton <i>Max. incentive \$1,250/home</i>
Ground-Source Heat Pump Closed Loop <135,000 BTUH @ 77°F	14.1 EER /3.3 COP	\$200/ton <i>Max. incentive \$2,500/home</i>
<i>Incentive available for failed geothermal equipment only. Entire indoor unit replacement is required to receive incentive. Replacing only the compressor will not qualify for the incentive. Equipment being replaced must fall outside of any warranty period to receive incentive. Invoice showing proof of purchase must be attached.</i>		

2015 Business Incentives

Lighting – New Construction <i>(Unless noted, must be used for lighting with a minimum of 1,800 hours of operation per year)</i>		
T8 Fluorescent Systems – High Performance <i>(CEE qualified)</i>		
T8 4ft. High Performance		
1-lamp	\$3/fixture	Both ballasts and lamps must be from CEE-approved list and meet the CEE specifications for High Performance T8 Systems in order to qualify.
2-lamp	\$4/fixture	
3-lamp	\$6/fixture	
4-lamp	\$7/fixture	
T8 Fluorescent Systems – Reduced Wattage <i>(CEE qualified)</i>		
T8 4ft. Reduced Wattage 25W and 28W Systems		
1-lamp	\$3/fixture	Lamps and ballasts must meet the CEE specifications for High Performance T8 Systems.
2-lamp	\$4/fixture	
3-lamp	\$7/fixture	
4-lamp	\$9/fixture	
<i>See “Commercial Lighting” at <a href="http://www.cee1.org">www.cee1.org</a> for approved lamp and ballast list. However if the ballast has a NEMA premium label, it automatically qualifies.</i>		
T8 Fluorescent Fixtures – High-Bay		
High-Bay T8 Fixtures – 4ft. Lamps		
3-lamp	\$20/fixture	Install T8 fluorescent high-bay fixtures using recommendations from lighting professionals that use lighting design software to match the most efficient design to actual lighting needs. Typically used instead of pulse-start metal halide fixtures.
4-lamp	\$25/fixture	
6-lamp	\$50/fixture	
8-lamp	\$70/fixture	
High-Bay Occupancy Sensor Control	<ul style="list-style-type: none"><li>• This is an additional incentive to add occupancy sensors to control the high-bay fluorescent fixtures listed above.</li><li>• Programmed start ballasts are highly recommended for controlled fixtures.</li></ul>	\$10 per controlled fixture

T5HO Fluorescent High-Bay Fixtures – New Construction <i>(Unless noted, must be used for lighting with a minimum of 1,800 hours of operation per year)</i>		
3-lamp	\$25/fixture	Consult with a lighting professional using their recommendations to install T5HO fluorescent high-bay fixtures.  Typically used instead of pulse-start metal halide fixtures.
4-lamp	\$50/fixture	
6-lamp	\$70/fixture	
<ul style="list-style-type: none"><li>• All fluorescent fixtures must utilize electronic ballasts and T8 or T5 lamps. Ballasts shall have a power factor greater than 90%.</li><li>• Harmonic distortion of ballasts shall not exceed 20%. For 8-foot fluorescent ballasts, the total harmonic distortion shall not exceed 30%.</li></ul>		

LED Lighting – New Construction <i>Must be ENERGY STAR® or DesignLights Consortium™ approved.</i>		
LED Screw-In Bulbs	\$4/bulb	In place of 40-60W incandescent. Must be ENERGY STAR approved.
LED Screw-In Bulbs	\$8/bulb	In place of 65W or greater incandescent. Must be ENERGY STAR approved.
LED Recessed Downlights <i>(Complete fixtures or replacements kits)</i>	\$8/unit	Must be ENERGY STAR approved.
LED Linear T8 Lamp Replacement	\$5/lamp	Must be DesignLights Consortium approved.
LED Linear Fluorescent – New Fixtures		
1-lamp equivalent	\$5/fixture	
2-lamp equivalent	\$10/fixture	
3-lamp equivalent	\$15/fixture	
4-lamp equivalent	\$20/fixture	
LED Case Lighting	\$25/door	Retrofit or new installations. Must be DesignLights Consortium approved.
LED Fixtures – HID Replacement	\$40/fixture	LED fixture Wattage of <40 Watts. Must be DesignLights Consortium™ approved. If used as an outside fixture it must have a photocell.
LED Fixtures – HID Replacement	\$80/fixture	LED fixture Wattage of >40 Watts. Must be DesignLights Consortium approved. If used as an outside fixture it must have a photocell.

LED Lighting – Retrofit <i>Must be ENERGY STAR® or DesignLights Consortium™ approved.</i>		
LED Fixtures – HID Replacement	\$40/fixture	LED fixture Wattage of <40 Watts. Must be DesignLights Consortium approved. If used as an outside fixture it must have a photocell.
LED Fixtures – HID Replacement	\$80/fixture	LED fixture Wattage of >40 Watts. Must be DesignLights Consortium approved. If used as an outside fixture it must have a photocell.
Other Efficient Lighting Technologies – Retrofit		
Occupancy Sensors <i>Under 500 W</i>	\$20/sensor <i>(limit is \$2,000)</i>	May be wall or ceiling mounted. Programmed start ballasts are recommended for fluorescent fixtures.
Occupancy Sensors <i>Over 500 W</i>	\$40/sensor <i>(limit is \$2,000)</i>	
Plug Load Occupancy Sensor Document Stations	\$25/sensor	Each sensor incented must control at least three copiers, printers or faxes in any combination.
Snack Misers	\$25/unit	
Vending/Cooling Misers	\$50/unit	
LED Exit Sign – New Fixture ≤ 8 Watts	\$12/unit	Replace or retrofit existing sign. LED Exit Signs shall use 8 Watts or less, including the battery charger when active. Must meet State Fire Marshall codes and be UL-rated.
LED Automobile Traffic Signal	\$25/lamp replaced	Traffic signals using LED lights must replace conventional signals.
LED Pedestrian Signal	\$22/sign	Pedestrian signals using LED lights must replace conventional signals.
LED Case Lighting	\$25/door	Replacing fluorescent

LOOK UP

POWER LINES MAY BE OVERHEAD



Safe. Sound. Secure.® Since 1916

Save money with Auto-Owners Insurance Multi-Policy Discounts!

Call or visit us today!

Red Lake County Insurance

Red Lake Falls, MN

218-253-2177 • [rlci@gvtel.com](mailto:rlci@gvtel.com)

[www.redlakecountyinsurance.com](http://www.redlakecountyinsurance.com)

Auto-Owners Insurance

Life Home Car Business

Auto-Owners

12958 (7-13)

Underwritten and issued by Auto-Owners Life Insurance Company

Minnesota State Electrical Inspectors

Pennington and Marshall Counties:  
Scott Stenvik – 218-686-5406

Red Lake and Polk Counties:  
Brian Holmes – 218-686-1413

Any time you or an electrician does wiring or other electrical work at your home or farm, Minnesota state requires a state wiring inspector to conduct a proper inspection of the work. A rough-in inspection must be made before any wiring is covered. A final inspection is also required. Please visit [www.electricity.state.mn.us](http://www.electricity.state.mn.us) for more information. The inspectors can be reached weekday mornings between 7:00 a.m. and 8:30 a.m.




Power Savers program incentives available  
Continued from page 5

2015 Business Incentives Continued

T8 Fluorescent Systems - Reduced Wattage (CEE qualified)		
T8 4ft. Reduced Wattage System		
1-lamp	\$7/fixture	Replace incandescent or T12 systems with 28 and 25 watt CEE qualified Reduced Wattage T8 Systems. Lamps and ballasts used must meet the CEE specifications for Reduced Wattage T8 Systems.
2-lamp	\$9/fixture	
3-lamp	\$14/fixture	
4-lamp	\$18/fixture	
Replacement fixtures or lamp and ballast retrofits are eligible.		
See "Commercial Lighting" at <a href="http://www.cee1.org">www.cee1.org</a> for approved lamp and ballast list. <b>However if the ballast has a NEMA premium label, it automatically qualifies.</b>		
T8 Fluorescent Systems – High Performance (CEE qualified)		
T8 4ft. High Performance		
1-lamp	\$6/fixture	Replace incandescent, T12 Systems, or specified standard T8 Systems with CEE qualified High Performance (super) T8 Systems.
2-lamp	\$7/fixture	Lamps and ballasts used must meet the CEE specifications for High Performance T8 Systems.
3-lamp	\$12/fixture	Replacement fixtures or lamp and ballast retrofits are eligible.
4-lamp	\$14/fixture	
T8 Fluorescent Systems – 4ft. High Performance (Replacing specific fixtures)		
2-lamp	\$20/fixture	Replacing T12HO 8' one lamp fixture – one for one replacement only.
4-lamp	\$30/fixture	Replacing T12HO 8' two lamp fixtures – one for one replacement only.
High Performance (super) T8 systems require manufacturer and model number for ballast and lamps used. Both ballast and lamp must be from CEE approved list to qualify. See approved list at <a href="http://www.cee1.org">www.cee1.org</a> , under "Commercial Lighting." <b>However if the ballast has a NEMA premium label, it automatically qualifies.</b>		
T8 Fluorescent Fixtures – High Bay (Retrofit)		
One for one replacement only. Only when replacing specific wattage HID (metal halide, mercury vapor and high pressure sodium) or incandescent fixtures.		
T8 High-Bay Fixtures 4ft. Lamps		
3-lamp	\$20/fixture	Replacing 150 Watt or larger
4-lamp	\$25/fixture	Replacing 250 Watt or larger
6-lamp	\$50/fixture	Replacing 400 Watt to 749 Watt
8-lamp	\$70/fixture	Replacing 750 Watt or larger

High-Bay Occupancy Sensor Control	<ul style="list-style-type: none"><li>• This is an additional incentive to add occupancy sensors to control the high-bay fluorescent fixtures listed above.</li><li>• Programmed start ballasts are highly recommended for controlled fixtures.</li><li>• High bay occupancy sensor incentives may not be combined with any other occupancy sensor incentive.</li></ul>	\$10 per controlled fixture
-----------------------------------	---	-----------------------------

T5HO Fluorescent High-Bay Fixtures – Retrofit		
One for one replacement only. Only when replacing specific wattage HID (metal halide, mercury vapor and high pressure sodium) or incandescent fixtures.		
2-lamp	\$20/fixture	Replacing 150 Watt to 249 Watt
3-lamp	\$25/fixture	Replacing 250 Watt or larger
4-lamp	\$50/fixture	Replacing 400 Watt to 749 Watt
6-lamp	\$40/fixture	Replacing 400 Watt to 749 Watt
6-lamp	\$70/fixture	Replacing 750 Watt or larger
All fluorescent fixtures must use electronic ballasts and T8 or T5 lamps. Ballasts shall have a power factor greater than 90%. Harmonic distortion of ballasts shall not exceed 20%. For 8-foot fluorescent ballasts, the total harmonic distortion shall not exceed 30%.		
LED Lighting – Retrofit		
Must be ENERGY STAR® or DesignLights Consortium™ approved.		
LED Screw-In Bulbs	\$4/bulb	Replacing 40-60W incandescent. Must be ENERGY STAR approved.
LED Screw-In Bulbs	\$8/bulb	Replacing 65W or greater incandescent. Must be ENERGY STAR approved.
LED Recessed Downlights (Complete fixtures or replacements kits)	\$8/unit	Must be ENERGY STAR approved.
LED Linear T8 Lamp or Replacement	\$5/lamp	Must be DesignLights Consortium approved.
LED Linear Fluorescent Replacement or New Fixture		
1-lamp equivalent	\$5/fixture	
2-lamp equivalent	\$10/fixture	
3-lamp equivalent	\$15/fixture	
4-lamp equivalent	\$20/fixture	



Red Lake Electric Cooperative, Inc.

One of the Minnkota Power Systems

Phone

Toll-free

Fax

After-hour outage

Office hours

E-mail:

Web site

218-253-2168

1-800-245-6068


218-253-2630

218-253-2200

Monday-Friday, 8:00-4:30

redlake@minnkota.com

www.redlakeelectric.com



Call Before You Dig - Gopher State One Call • 1-800-252-1166

P. O. Box 430 • 412 International Drive SW • Red Lake Falls, MN 56750-0430

LED Lighting – Retrofit		
Must be ENERGY STAR® or DesignLights Consortium™ approved.		
LED Fixtures – HID Replacement	\$40/fixture	LED fixture Wattage of <40 Watts. Must be DesignLights Consortium approved. If used as an outside fixture it must have a photocell.
LED Fixtures – HID Replacement	\$80/fixture	LED fixture Wattage of >40 Watts. Must be DesignLights Consortium approved. If used as an outside fixture it must have a photocell.
Other Efficient Lighting Technologies – Retrofit		
Occupancy Sensors Under 500 W	\$20/sensor (limit is \$2,000)	May be wall or ceiling mounted. Programmed start ballasts are recommended for fluorescent fixtures.
Occupancy Sensors Over 500 W	\$40/sensor (limit is \$2,000)	
Plug Load Occupancy Sensor Document Stations	\$25/sensor	Each sensor incented must control at least three copiers, printers or faxes in any combination.
Snack Misers	\$25/unit	
Vending/Cooling Misers	\$50/unit	
LED Exit Sign – New Fixture ≤ 8 Watts	\$12/unit	Replace or retrofit existing sign. LED Exit Signs shall use 8 Watts or less, including the battery charger when active. Must meet State Fire Marshall codes and be UL-rated.
LED Automobile Traffic Signal	\$25/lamp replaced	Traffic signals using LED lights must replace conventional signals.
LED Pedestrian Signal	\$22/sign	Pedestrian signals using LED lights must replace conventional signals.
LED Case Lighting	\$25/door	Replacing fluorescent

Energy Efficiency  
Tip of the Month



By cleaning your air conditioner’s air ducts, you can lower your energy consumption by between 5 and 15 percent.

Source: [energy.gov](http://energy.gov)

AUTO PAY OFFERED BY RLEC

Red Lake Electric Cooperative is pleased to offer you Auto Pay. Now you can have your monthly energy bill paid automatically from your checking or savings account. You can receive the Auto Pay service by completing the Auto Pay sign-up sheet and returning it to Red Lake Electric Cooperative. The Auto Pay service is free of charge. Not only is this service free, you will eliminate the expense of writing a check, postage to mail your payment and no more late payment penalties because your bill will be paid on time, every month, for you. Your payment will be automatically made for you on the 5th of each month. If the 5th

falls on a weekend or holiday, the payment will be made on the next business day. You will continue to receive your monthly energy bill as you have in the past, indicating the amount that will be withdrawn from your bank account. The proof of your payment will appear on your bank statement and your next month's energy bill statement. Continue to pay your monthly bill until you are notified on your bill that the Auto Pay has been set up for you. If you have any questions about the Auto Pay please call RLEC at 800-245-6068 or 218-253-2168.

AUTO PAY  
SIGN-UP SHEET

I authorize Red Lake Electric Cooperative (RLEC) and the bank listed below to initiate variable entries to my checking or savings account. This authorization remains in effect until I notify RLEC in writing to cancel it in such time as to allow RLEC to act on it.

RLEC ELECTRIC ACCOUNT #

NAME (PRINT)

ADDRESS

TELEPHONE #

NAME OF FINANCIAL INSTITUTION

CHECKING ACCOUNT #

SAVINGS ACCOUNT #

SIGN HERE TO AUTHORIZE

Please return this authorization form with a blank, voided check to:  
Red Lake Electric Cooperative, P.O. Box 430, Red Lake Falls, MN 56750







Pole inspections to begin

Red Lake Electric Cooperative has contracted with RAM Utilities to test poles within the Cooperative's service area. The inspection will begin late July. Poles to be tested are on feeder 2, 4 and 5 of the Terrebonne substation. This will include the townships of: Black River in Pennington County and Gervais, Emardville, Red Lake Falls, Lake Pleasant and Terrebonne all in Red Lake County and Tilden, Grove Park and Badger in Polk County. RAM Utilities will use ATV vehicles to travel from pole to pole. These vehicles will be equipped with Red Lake Electric signage to make them recognizable. If you have any questions concerning this pole inspection please call the Cooperative's office at 800-245-6068.



Make safety priority one when doing home improvement and repair projects

If summer weather is sprouting thoughts of home improvement projects, you are not alone. Rising temperatures traditionally give rise to more remodeling, repairs, maintenance, landscaping and construction projects both inside and outside the home. In an effort to make sure the growth in home improvement projects and maintenance work doesn't result in increased injuries, Safe Electricity urges all do-it-yourselfers to take precautions, especially when working around electrical equipment and overhead power lines. Make sure outdoor outlets are equipped with a ground fault circuit interrupter (GFCI). Use a portable GFCI if your outdoor outlets don't have them. It's also a good idea to have GFCIs professionally installed in wet areas of the home, such as the kitchen, bath and laundry. Safety tips to keep in mind include:

- Look up and around you.

Always be aware of the location of power lines, particularly when using long metal tools like ladders, pool skimmers and pruning poles, or when installing rooftop antennas and satellite dishes or doing roof repair work.

- Be especially careful when working near power lines attached to your house. Keep equipment and yourself at least 10 feet from lines. Never trim trees near power lines — leave that to the professionals. Never use water or blower extensions to clean gutters near electric lines. Contact a professional maintenance contractor.
- If your projects include digging, like building a deck or planting a tree, call the national underground utility locator at 8-1-1 before you begin. Never assume the location or depth of underground utility lines. This service is free, prevents the inconvenience of having utilities interrupted, and can help you avoid serious injury.

- Electricity + water = danger. If it's raining or the ground is wet, don't use electric power or yard tools. Never use electrical appliances or touch circuit breakers or fuses when you're wet or standing in water. Keep electric equipment at least 10 feet from wet areas.

Make certain home electrical systems and wiring are adequate to support increased electric demands of new electric appliances, home additions or remodeling projects. Also, energy use is greatest in the hot summer months when air conditioning use peaks. An older home may be inadequately wired for today's electrical consumption, putting your family at risk for fire and electrical shock. Replace worn and outdated circuitry and add enough outlets for appliances and electronics. Safe Electricity strongly recommends do-it-yourselfers to leave this project to the professionals.

How to talk to youngsters about finances

**By Allison Goldberg**  
Let's face it. If you want your child to grow into a financially responsible adult, you have to be the example. That means making good financial decisions at home and discussing money and finances honestly.

Before you start the conversation, think about your own values and beliefs around money and spending. If your values do not match your actions, it is time to align the two so your child sees you as a role model rather than a lecturer.

Begin teaching your child by simply talking. Discuss money and finances openly around your child. If your child asks a question about money or household finances, embrace the opportunity to start a conversation. Asking your child in return, "Why do you ask that?" or, "Why do you

think that?" will provide you time and information to formulate your response.

Creating age-appropriate activities can be fun and useful. Youngsters can start by using safety scissors to clip coupons or helping to create a grocery budget and list. As they get older, they can join discussions about more complex purchases, such as a car, which includes ongoing/additional expenses, like fuel, insurance and maintenance.

Engaging your child with activities as basic as grocery shopping creates opportunities to talk about the differences between needs and wants. Another lesson in "wants versus needs" can happen if you are saving for a family purchase, such as a vacation. Let your child be involved in saving. They may choose to help make dinner instead of eating out in order to build

your vacation fund more quickly. A goal sheet or "thermometer," placed prominently near the refrigerator or TV to record progress towards your goal can be a powerful motivator—and a helpful reminder when today's wants cloud the future goal.

Teaching your child about money and finances can seem daunting and might feel awkward, but it can also foster understanding on money-related issues. You are providing them an invaluable tool that will help them during a big life change, like unemployment or financing college. Just remember: know your values, be honest but age-appropriate in how you answer questions, ask questions in return, get your child involved and know that the financial education you are providing is a priceless gift.

Electrical safety around grain elevators

**By Amber Bentley**  
Working around grain bins creates hazards that are often overlooked by even the most seasoned farm hands. Always keep these safety tips in mind:

- Suffocation/engulfment
- Entrapment can happen in a second when dealing with grain, which often is compared to quick sand. This is leading cause of death in storage bins.
- Do not enter grain bins during active loading and unloading times
- Never work alone
- Make sure to wear proper safety equipment
- Fires/explosions

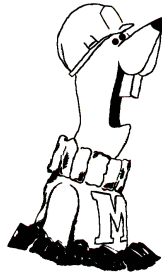
When grain dust accumu-

lates, it can sometimes create the right conditions to spark a fire. These fires are difficult to stop and usually end with a large explosion.

- Be sure your ventilation system is working properly
- Clean regularly to keep grain dust accumulations to a minimum
- Do not smoke or ignite any other open flames while in the grain bin
- Toxic atmospheres
- Mold, fungi, and chemical fumes from decayed grains can create a deadly atmosphere.
- Store fully dried grain at the proper moisture
- Wear a mask or filter res-

pirator to limit the amount of direct contact to the fumes

- Try to keep animal and insect infestations to a minimum
- Machine malfunctions
- Machines also pose deadly risks, including amputation, entanglement, and electrocution.
- Do not operate these machines while inside the bins
- Ensure that all equipment is properly guarded
- Be on the lookout for overhead power lines
- Check for frayed cables
- Always wear safety belts or some form of protection



A call to Gopher State will get all utility underground lines and pipes located and marked, FREE of charge, within 48 hours.

Call Before You Dig

Red Lake Electric Cooperative members and area contractors are reminded, if you are planning to dig deeper than one foot, you must call Gopher State One Call — it's the law!

With the arrival of spring, many people have plans for digging and planting projects. To ensure your safety and the safety of others, before digging or planting, call Gopher State One Call.

**1-800-252-1166**

HILLCREST  
SENIOR  
LIVING

HILLCREST  
SENIOR  
LIVING

OPEN HOUSE

You're invited!

Sunday, July 26th

Everyone is Welcome!

FREE picnic lunch from 1 to 5 p.m.

FREE tours of our NEW facility



*An Assisted Living Community  
Where Your Independence Can Thrive.*

311 Broadway Ave NE  
Red Lake Falls, MN 56750  
218-253-2157