



Volts and Jolts

Published monthly for the members of
RED LAKE ELECTRIC COOPERATIVE, Inc.

One of the Minnkota Power Systems

SERVING THE FOUR-COUNTY AREA OF MARSHALL, PENNINGTON, RED LAKE AND POLK
and a portion of the lands of the Red Lake Band of Chippewa

VOL. 49 – NO. 11

RED LAKE FALLS (RED LAKE COUNTY), MINNESOTA 56750

AUGUST 2014

Tornado and forceful winds causes damage and outages on July 21

Confirmed by the National Weather Service an EF-2 rated tornado traveled through parts of our service territory during the late evening on July 21.

The route of the tornado started in the southwest corner of Polk County and ended in the southwest portion of Red Lake County. Not only did the tornado affect many of our members, there were also many residences within Red Lake Electric's service territory that were pounded by damaging straight line winds and excessive rain.

The storm caused extreme structural damage to personal property and to electric cooperative structures. Following the storm, Red Lake Electric

Cooperative had 1800 accounts without electricity. The outages were spread throughout a large portion of our service territory, from Crookston up to Viking on the West side and Trail to up to Goodridge on the East side of our service territory.

Red Lake Electric crews began service restoration shortly after the passing of the storm. The crews worked through the night and continued working (2208002.01, Robbie and Angie Anderson) throughout the day into the evening on July 22.

Two line crews came to assist from area Cooperatives; PKM linemen Joe Marcotte, Ben Pahlen and Scott Slusar of

Warren and Clearwater-Polk linemen Travis Huot and Josh Hendricks of Bagley.

The crews suspended their efforts in the late evening on July 22 with 21 accounts still without electricity. Power was restored to all accounts having an active residence on July 23; two farm sites remained without electrical power until the following morning.

As a result of the storm there have been 25 reported broken poles, wire breaks and numerous downed trees.

Red Lake Electric employees extend their gratitude to the many understanding and helpful cooperative members. Thank You!



Red Lake Electric had 21 three-phase poles toppled by the tornado that traveled from southwest Polk County to southwest Red Lake County on July 21. Power restoration spanned short of 48 hours as Red Lake Electric had 1800 members without electricity.

Operation Round Up® grant applications due Sept. 9

Organizations involved in community projects and charities are encouraged to apply for funds from Operation Round Up at this time. Completed grant applications are due in the Red Lake Electric Cooperative (RLEC) office by September 8.

Operation Round Up is a program adopted by RLEC headquartered in Red Lake Falls. members choosing to "round up" their monthly electric bill payment provide funds for this effort. Today 91 percent of RLEC members now choose to contribute pennies each month to enhance their communities.

Funds will be donated primarily to nonprofit organizations to help fund specific projects or

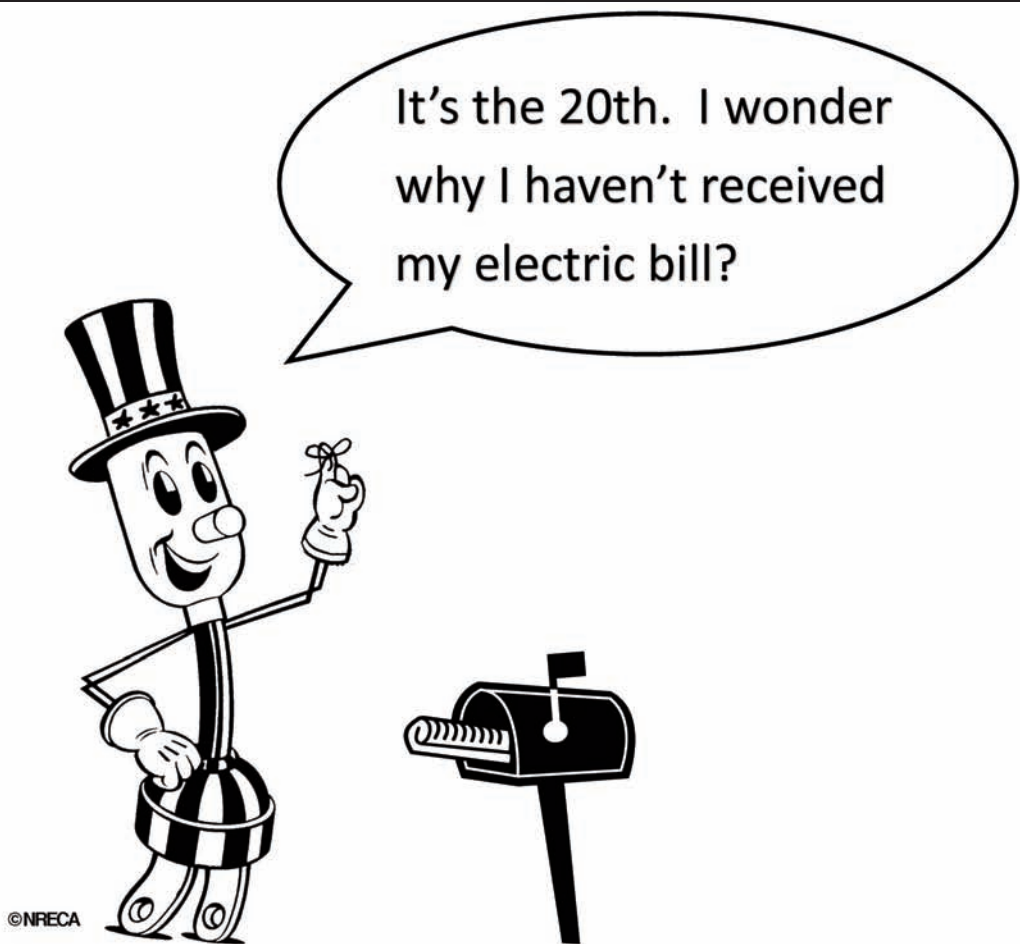
programs. Since the program began in 1993, \$409,000 has been granted to community organizations and charities. Money is donated for the betterment of the community within the outside service area boundaries of RLEC.

The Red Lake Electric Trust Board of Directors determines grants. Board members are Patty Mickelson, Oklee; Van Swanson, Thief River Falls; Randy Knutson, Newfolden; Roger Johanneck and Bonnie Christians, Crookston.

To apply for Operations Round Up grants, organizations should contact the RLEC office in Red Lake Falls at 218-253-2168 or 800-245-6068. A short

application must be completed and submitted along with a financial statement from the organization. The grant application form is available on the Cooperative's Web site: www.redlakeelectric.com or an application form is included on page 8.

For more information contact Roger Johanneck, general manager of RLEC, at 218-253-2168 or 800-245-6068.



Remember RLEC has changed the dates of the billing cycle. You should receive your electric bill by the 10th of each month and your payment must be postmarked by the 25th to avoid a late charge. Any questions or concerns, call 800-245-6068 or email redlake@minnkota.com.

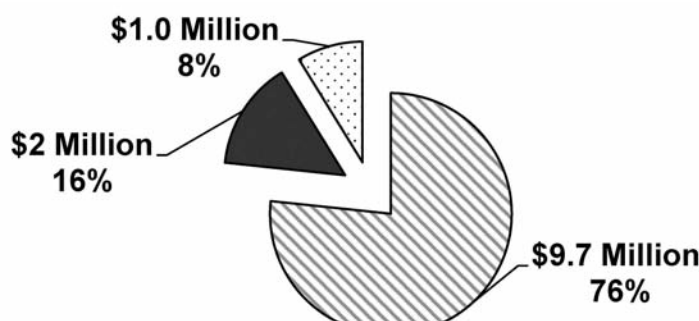
QUICK TAKES

A look at some statistics from your Red Lake Electric Cooperative

QUICK TAKES

A look at some statistics from your Red Lake Electric Cooperative

Did you ever think about how trees impact the cost of doing business at your Red Lake Electric Cooperative? Last year, RLEC's cost to provide electric service to it's members totaled \$12.7 million. About 1/6th (\$2 million) of that total cost represents Operating expenses. Operating expenses include, among other things, the cost to cut trees from the powerlines as part of regular maintenance, the cost to clear them from the power lines during outages and the cost to repair the power lines & other electrical equipment damaged by trees that fall into the line. Where you plant trees, and allowing the Cooperative to maintain adequate clearance, does make a difference in the cost of providing you reliable electric service.



□ Cost of Power ■ Operating Expenses □ Depreciation and Interest

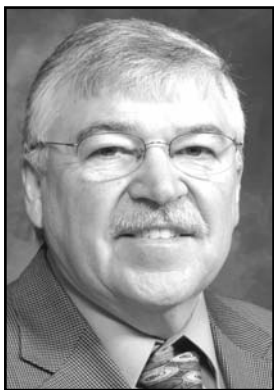


Kevin Reich retired from Red Lake Electric Cooperative after 40 years with the Cooperative. Thank you, Kevin, for your years of dedicated service to Red Lake Electric Cooperative.

In this month's Volts and Jolts

Page 2
Manager's Comments
Page 3
Recipe Corner
Mail Bag
Page 4
Feature of the Month
Amiot Farm receives Century Farm status

Page 5
Are you grounded? GFCI outlets can help!
Page 6
Local 4-Hers receive awards from RLEC
Page 8
Respect those "green boxes" called transformers



Manager's Comments

by Roger Johanneck



Storm drops power lines; raises questions

The July 21st wind storm that blew through eastern North Dakota and NW Minnesota, including Red Lake Electric's service area, created problems and power outages for many. All toll, about 1,800 of Red Lake Electric's 5,000 member accounts experienced service interruption from that wind storm.

Even after power was restored to all services, the repair work continues on poles and other equipment that only got a temporary fix in order to get the juice flowing again. Electric system problems from storms like this one have a way of showing up again. Branches that were hung up in a tree later make their way onto the line and create a blink in power or possibly another outage.

While your Cooperative has experienced bigger storms, that have knocked out power to more than the 1,800 this one did, or were more costly and kept power off longer, this was a significant event. After events like this storm, as employees, we ask what we could have done better or different to help restore power quicker.

What about equipment and manpower; did we have the right tools and adequate staffing to do our work? Now that the recovery efforts are still fresh in our mind, it's a good time to assess what worked, what didn't and what can we do or change to improve upon the process we have in place for responding to major service interruptions.

As members you might be asking yourselves what you could do differently, if anything, to avoid or minimize the inconvenience caused when the power goes out. Certainly having a backup generator goes a long way towards minimizing a power outage. What about trees? It is a good time to look around

your property and consider the risk that trees may pose if you have them within striking distance of Red Lake Electric's power-line or your own service wires. At least 60 of the service interruptions from this storm were individual in nature, mostly caused by trees in the member's yard falling into the electrical equipment.

You might also question why Red Lake Electric doesn't just install more underground lines. Certainly having underground lines vs. overhead power lines would help avoid most of the tree and wind problems this storm created. While underground cable might seem like an attractive solution, it is not without a price.

Underground construction is about twice as expensive as overhead construction. Underground construction has its benefits but it has a shorter life than overhead construction and is not immune to rodents, shovels, backhoes and whatever else we move earth with. It would be very expensive to make significant overhead power line replacements to our electric plant.

Because of the widespread nature of this storm, the cause of service interruption extended beyond our service area boundaries. Transmission lines delivering power to our service area at the Hazel, Huot, Terrebonne and Gentilly Creek Substations were damaged causing loss of service to all customers served out of these four substations. Substation power was restored after a half-hour at the first three subs and after 4 1/2 hours at the Gentilly Creek sub.

Once power was restored to the substations, our crews could begin turning lines back on and restoring power. Unfortunately, major damage to our three-phase distribution lines near the

Huot and Terrebonne substations delayed our restoration efforts.

After the initial blow went through and the damage was done, our phones were busy. We appreciate the information members called in. Spotting problems on the line and making repairs after dark just takes longer to do than when crews are working during the day. You alerting us to problem areas such as where trees where on the line, wires down and poles broken went a long way in accelerating our restoration efforts.

We had all Red Lake Electric employees help out in some way with this storm recovery effort. In addition to our crews, five line workers from neighboring Clearwater-Polk electric cooperative in Bagley and PKM electric in Warren gave us a hand fixing up the storm damage. I sincerely appreciate the extended work days our employees and invited help endured to get power restored. I was very pleased with their effort and hope you were too.

Kevin Reich retires: As Kevin already noted in his last column to the membership, his career has come full circle here at Red Lake Electric. No doubt Kevin was a well-known employee of the Cooperative. His work brought him to many homes and businesses throughout our service area over his 40 years in member services. I know, too, those associations with the membership was something Kevin enjoyed a great deal about his job here.

I congratulate Kevin on his successful career here at Red Lake Electric; thanks for your good works Kevin and may you have a long, healthy and happy retirement.



Report from the Office

by Shirley Bregier

It already has been feeling like fall in the mornings with the heavy dew and cool temps. I, for one, don't feel we have had much summer yet and am not ready for fall, much less to say the winter that follows right behind.

As we move into fall and you start using your off peak electric heat, I ask that you to read your off peak meter at the end of the month and compare the meter reading to the off peak reading on your electric bill. Sometimes when a meter hasn't had any activity for a while the automated meter reading (AMR) device doesn't always start up when the meter does.

Once you start using electric

heat please be sure your electric bill reflects that usage. If your meter readings do not match what is on the electric bill, please let us know so we can get it remedied.

Remember, if your off peak meter isn't working properly you will be paying full rate for the electricity you use to heat your home instead of the reduced off peak rate.

We have now completed two billing cycles where we have billed an additional 10 days during each cycle. Starting Aug. 1 we will once again be billing you for a one month period; the bill you receive at the beginning of September will be for usage Aug. 1 thru Aug. 31. The reason

for the extra 10 days for two billing cycles was so we could bring your meter readings up to the end of the month.

We have been reading your electric meter on the 10th of the month since early 2000's. We will now be reading your meter at the end of the month. You should be receiving your electric bill around the 10th and it will now need to be paid by the 25th to avoid a collection fee. We appreciate your understanding as we work thru this change.

As we move into the fall harvest season, please remember to look up, look around and be safe.

Another Great Choice for Good Health



Carly Haas, PA-C is available
Monday-Friday
for patients of all ages at
RiverView Clinic-Red Lake Falls.

Same day appointments
are available, call
218.253.4606.



RIVERVIEW HEALTH
Exceptional People. Exceptional Care.

Park Place Mall, Red Lake Falls

Closed Labor Day

In observance of Labor Day, Red Lake Electric Cooperative's headquarters will be closed Monday, September 2.

In case of an electrical outage or emergency call the Cooperative's after-hour phone number 218-253-2200.

Have a safe, enjoyable Labor Day weekend. If your weekend activities take you outdoors, remember to look up for overhead power lines!

ELECTRIC HEAT EXEMPTION

This is to certify that the primary source of heat for my residence is electricity and I am eligible for the electric heating sales tax exemption as provided by Minnesota State Law. The primary source is the source that supplies more heat than any other source for the largest period of time during the heating season.

Date _____ Account number _____

Social Security Number _____

Signature _____

Mission Statement

It is the mission of Red Lake Electric Cooperative to enhance the quality of life for people of our service area by consistently providing quality electric service and other valued services while holding our employees, our community and our environment in high regard.



Red Lake Electric Cooperative, Inc.

One of the Minnkota Power Systems

RED LAKE ELECTRIC COOPERATIVE, Inc. VOLTS & JOLTS

(USPS 663-400)

Published monthly by the Red Lake Electric Cooperative, Inc., 412 International Drive SW, Red Lake Falls, Minnesota 56750-0430, in the interest of its members and others. Periodical Postage Paid at the U. S. Post Office in Red Lake Falls, Minnesota 56750. POSTMASTER, SEND ADDRESS CHANGES to Volts & Jolts, c/o Red Lake Electric Cooperative, Inc., P. O. Box 430, Red Lake Falls, Minnesota 56750-0430. E-mail: redlake@minnkota.com

OFFICERS AND DIRECTORS

PRESIDENT Bonnie Christians
VICE PRESIDENT Randy Versdahl
SECRETARY-TREASURER Mark Hanson
DIRECTORS Kelly Lundeen,
Steven Linder, Peter Mosbeck,
Colette Kujava, Robert Finstad,
Stacy Blawat

Subscription Rate\$2.50 per year

AFTER-HOURS

OUTAGE PHONE

218-253-2200

NOTICE

Hidden within the text of the articles of this issue of the Volts & Jolts are the names and account numbers of some RLEC members. They will appear within the articles in parenthesis as such (9999999.99 Roger P. Member). If you find your name and account number, clip it out and send it with your next payment. You will be credited with \$5 on your electric bill.



**Red Lake Electric
Cooperative, Inc.**

One of the Minnkota Power Systems

Things you should know about your electric service

BILLINGS AND COLLECTION

You will receive your energy bill on or near the 10th of each month. Payment of your monthly energy bill is due on the 10th of the month. You may pay your bill in person at RLEC during office hours, use the 24-hour drive-up drop box located next to the RLEC office, by Auto Pay, by mail or by Bill4U on www.redlakeelectric.com.

Payment must be in our office or in the mail as evidenced by the postmark on or by the 25th day of the month to avoid a late payment charge. A 1 1/2% monthly late payment charge will be computed on delinquent energy bills; the minimum late payment charge will be \$1.00.

If your payment is not received by the end of the month a notice of disconnection statement will be included in the message area on your following energy bill. The disconnection statement will give a final notice of when your electric service will be disconnected if the delinquent amount remains unpaid. If an employee is sent to disconnect your electric service a \$60 collection fee will be charged to your account, even if you pay the collector.

To have a disconnected service reconnected, all amounts owing including the \$60 reconnection fee and a security deposit must be paid. If the service must be reconnected after normal working hours a \$120 reconnection fee must be paid.

BAD CHECKS

A \$15 charge will be levied each time a check is returned because of nonsufficient funds, account being closed or payment stopped along with any applicable bank charges.

OUTAGES

In case your electricity goes out, please do the following:

1. Check your fuses or breakers at the yard pole or meter pedestal.
2. Call your neighbor to see if they are out of electricity also.
3. Call the RLEC office (218-253-2168 or 1-800-245-6068) during working hours or 218-253-2200 after hours.

METER TESTS

RLEC has a schedule in place to have its meters periodically tested for accuracy. Results from these tests show that meters generally slow down with age; however, if you think that your meter is recording too much usage, RLEC will test it for accuracy. You must pay a test fee in advance of the test. If the meter test shows that the meter was inaccurate, the test fee will be refunded to you.

STOPPED METERS

If you find your meter has stopped and you are using electricity, please contact the office immediately so we can replace it. Average consumption will be billed to the member for the time the meter was stopped so there is no advantage in not reporting a stopped meter.

METER READINGS

An automated meter reading system is utilized to obtain monthly meter readings. Although the system is normally reliable, that is always a chance that the correct reading has not been transmitted to the office for billing. Customers should periodically read their meter and compare it to the reading on the billing statement. If the actual reading is not close to the billing statement reading, please call the office. Keep in mind that the reading on your bill is from the end of the month.

GENERAL SERVICE RATES

Facilities charge variable \$27 to \$35 month
April-December. 9.5¢ Kwh
January-March 9.9¢ Kwh
Long term off peak 5.5¢
Short term off peak 7.5¢
Off-peak equipment charge, \$5.50/month per heat meter.
Multiphase users add \$22/month cost of service charge.
Standby, \$12/month (meter disconnected but the power line remains; standby is not available on services larger than 15 KVA transformer capacity).
Security light: LED, \$8/month; High pressure sodium, \$8/month; mercury vapor, \$9/month; water heater flat credit, \$7/month (January-April billing).

Recipe Corner



Cucumber Salad

- 1 lg. onion
- 4 medium cucumbers
- 1-1/2 cups mayonnaise
- Salt and pepper
- 2-3 Tbsp. vinegar

Scrub cucumbers with a brush and dry. Do not peel. Slice thinly. Combine mayonnaise, sugar, salt and pepper and enough vinegar to make it pourable but still thick. Pour over cucumbers and onions. Mix well and refrigerate overnight. You can add more onions and cucumber until dressing is gone.

Beer and Honey Spareribs

- Country style spareribs
- 2 cups of beer
- 1 cup of honey
- 1 tsp. dry mustard
- 1 Tbsp. chili powder
- 1 tsp. sage
- 1 Tbsp. "Mrs. Dash" (original)
- 3 Tbsp. lemon juice
- 1 Tbsp. Worcestershire

Par-boil spareribs approximately 15 to 20 minutes. Let cool and place ribs in a large bowl. Mix ingredients well and pour over ribs. Let stand in refrigerator 12 hours (or more) turning several times. Remove ribs from marinade, reserving liquid.

Place ribs on rack of a hot grill or broiler, approximately four inches from heat. Cook, turning frequently and brushing with marinade until ribs are a dark brown and glazed.

Yield: six servings

Peach Crisp Dessert

- 1-29 oz. can sliced peaches
- 1 butterscotch cake mix
- 1/2 cup margarine, melted
- 1 cup flaked coconut
- 1 cup walnuts, optional
- Pan size: 9 x13 inch
- Oven temp: 350°
- Bake time: 50-60 minutes

Pour peaches with syrup into ungreased pan. Sprinkle with cake mix, then coconut and nuts. Pour melted margarine over the cake mix. Bake.

Hamburger Bean Hotdish

- 1/2 lb. bacon, chopped
- 1 large onion, diced
- 1 lb. hamburger
- 1 can lima beans
- 1 can kidney beans
- 1 can pork and beans
- 1 cup ketchup
- 1 tsp. mustard
- 1/2 cup brown sugar
- 1 1/2 Tbsp. vinegar

Brown hamburger and onion. Fry bacon well and drain. Place into casserole dish or roaster and add all other ingredients. Bake for one hour at 350° or use slow cooker. Freezes well also.

Chicken Marinade

- Chicken Breasts
- Worcestershire Sauce
- Lemon Pepper
- Lawry 's Salt
- Lemon Juice
- Pepper
- Italian Dressing

Lay chicken breasts in pan. Put a few drops of Worcestershire sauce on each. Cover with lemon pepper, Lawry's salt, lemon juice (1 tsp. each breast), pepper and dressing.

Marinate turning every four hours. Grill 25 minutes turning every five minutes.

Blueberry Coffee Cake

- 3/4 cup sugar
- 2 cups blueberries
- 1/4 cup shortening
- Topping:**
- 1 egg
- 1/2 cup brown sugar
- 1/2 cup milk
- 1/3 cup flour
- 2 cups flour
- 1/2 tsp. cinnamon
- 2 tsp. baking powder
- 1/4 cup soft butter
- 1/4 tsp. salt
- Nuts, if desired
- Pan size: 8 x 8 inch
- Oven temp.: 375°
- Bake time: 25-35 minutes

Mix sugar, shortening and egg thoroughly. Stir in milk. Sift together flour, baking powder and salt. Mix the two mixtures together. Carefully blend in blueberries. Pour into greased pan. Sprinkle with topping. Bake.

From the Mail Bag

Dear RLEC,

Thank you for sponsoring my champion breeding ewe lamb, top dairy production and the lamb rate of gain trophies at the Pennington County Fair.

**Sincerely,
Samantha Larson, Steiner
4-H Club**

Dear RLEC,

I am very thankful for you sponsoring the leadership award. I hope you will do it next year also it means a lot to us all 4-Her's to have people care about us in the animal business.

**Sincerely,
Steven Hanson
Highlanding 4-H Club**

Dear RLEC,

Thanks for supporting the Marshall County Fair and for donating money for the trophy! I won it in swine showmanship! Thanks Again!

**Dustin Dahl
New Maine 4-H Club**

Dear RLEC,

Thank you for sponsoring the rabbit herdsman'ship award. We really appreciate what you have done! Once more, thank you!

**Sanders Rabbit Showers
Sanders 4-H Club**

Dear RLEC,

Thank you for supporting the 4-H showmanship trophy. I won with my pig.

**Tucker Lunke
New Maine 4-H Club, TRF**

Dear RLEC,

Thank you very much for sponsoring my herdsman'ship award!

**Rylie Nelson
Independent 4-H'er**

Dear RLEC,

Thank you for sponsoring the beef herdsman'ship award at the Pennington County Fair. We worked very hard to keep our stall looking its best! It was a great fair! Thanks for all your support in the 4-H program!

**Sincerely,
Alanis, Noah and Malena
Rupprecht
Silverton 4-H Club, TRF**

Dear RLEC,

Thank you for your business award for top in house project/show. I competed in all the house categories and received the overall grand champion award. Thanks for supporting Red Lake County 4-H.

**Sarah Quick
Happy-Go-Lucky 4-H
Red Lake County**

Dear RLEC,

I am writing to express my sincere gratitude to you for making the Red Lake Electric Scholarship possible. I was thrilled to learn of my selection for this honor and I am deeply appreciative of your support.

**Sincerely,
Taylor Myers
Viking**

Dear RLEC,

We don't often take the time to say "Thank You" as much as we should.

Thank you to Red Lake Electric for your fine and dependable service. I want to make a special note of thanks to Mike for all his help. He came to my rescue two times in one week! My water heater called it quits at about 10 a.m., Mike was here and replaced it by mid-afternoon. Wow! Thank You!

**Laura Nelson
St. Hilaire**

Dear RLEC,

My wife, Emma and I want to express our appreciation to you, members of your staff and the line crew who restored our electricity after the storm on Monday night, July 21. We lost power around 9:30 p.m. and it was back on before 5 a.m. on Tuesday.

Red Lake Electric Cooperative management and staff provide excellent service to all those they serve!

**Sincerely,
Jack and Emma McKeever
Red Lake Falls**

New study links playing games to greater mental sharpness

Older adults who enjoy mentally stimulating games may have bigger brains and sharper thinking skills than their peers, new research suggests. The study looked at the connection between playing games such as puzzles, crosswords, cards and checkers and mental acuity for adults in their 50s and 60s.

Researchers found that people who played those games at least every other day performed better on tests of mem-

ory and other mental functions. And, based on MRI scans, they had greater tissue mass in brain areas involved in memory.

However, the chicken-or-egg question (120002.01, Farners Co-op Creamery) remains, said lead researcher Stephanie Schultz. "The cause-and-effect here is unclear," said Schultz, a research specialist at the University of Wisconsin, Madison.

Dean Hartley, director of

science initiatives for the Alzheimer's Association, agreed. "We don't know whether crosswords and puzzles will stave off dementia," he noted. But, he said, the results fit in with a body of research suggesting that mental "exercise" might help delay the onset of dementia in some people.

Alzheimer's is marked by the buildup of abnormal protein deposits in the brain known as plaques and tangles. But researchers know that some people are able to keep up their day-to-day functioning despite those brain changes.

One theory, Hartley explained, is that people who are more educated, or engage in mentally stimulating activities, have a bigger "cognitive reserve" to draw upon when Alzheimer's-related brain changes begin.

If mental exercise is beneficial, is there something special about games -- as opposed to reading a good book? Hartley said it's possible; games not only stimulate the mind, but can keep older adults socially active as well, he noted. Schultz agreed. "Our findings suggest that cognitively stimulating activities -- games, in particular -- may be beneficial," she said. "Whether that's

due to the cognitive stimulation or the social aspect, or both, is a good question."

The findings are based on 329 older adults who were free of dementia, but at increased risk of Alzheimer's. Three quarters of the study volunteers had a strong family history of Alzheimer's disease. Forty percent had a gene that's linked to the disease. On average, the researchers found, study participants who said they played games at least every other day performed better on standard tests of memory and other mental abilities, compared to those who played games less often.

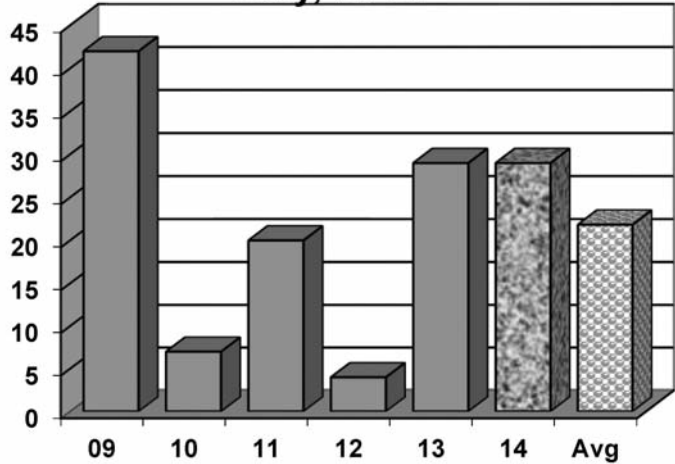
Schultz said future research should try to weed out whether certain games seem more promising than others -- and then put them to test. That means designing trials where older adults would actually be randomly assigned to take up mentally stimulating activities or not.

Hartley agreed that studies like those would be useful. But for now, he said, people can think of mental exercise as one part of a healthy lifestyle that might affect their dementia risk later. He suggested people eat a healthy diet, get physical as well as mental exercise, and talk to their doctors about managing cardiovascular risk

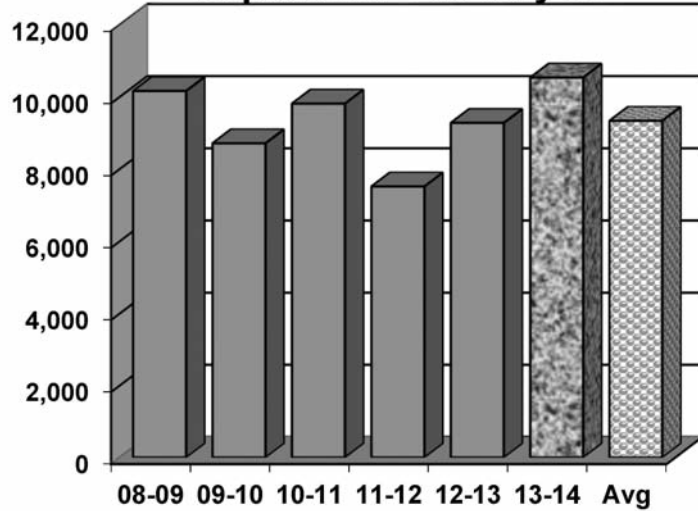
DEGREE DAYS

To determine degree days, you must calculate the daily mean temperature for the time period you are measuring. Degree day computation is based on the assumption that a building does not require any heat if the outside temperature averages 65 degrees during a 24-hour period. To obtain a degree day figure, the high temperature and the low temperature for the day are added and the total divided by two. That figure is then subtracted from 65. For example, if the high temperature was 30 degrees and the low temperature 10 degrees, the figure would be 30+10=40; 40/2=20; 65-20=45. This would be a 45-degree day. The higher the degree day figure, the more heat required to warm your home.

DEGREE DAYS July, 2014



Year To Date September 1 to July 31



Red Lake Electric Cooperative, Inc. Operating Report MONTHLY COMPARISON

	JUNE 2013	JUNE 2014
Total Revenue	\$ 829,289	\$ 653,797
Total Margins	\$ (28,654)	\$ (279,394)
Cost of Power	\$ 638,497	\$ 702,318
KWH's Purchased.....	\$ 7,331,341	\$ 7,819,271
Capital Credits Paid to Estates ..	\$ 15,847	\$ 3,998
Average outage time in minutes per member	4	2

YEAR TO DATE COMPARISON

	JUNE 2013	JUNE 2014
Total Revenue	\$7,520,077	\$ 7,997,305
Total Margins	\$1,098,276	\$ 1,130,167
Cost of Power	\$5,063,686	\$ 5,374,017
KWH's Purchased	74,094,343	78,422,602
New Service Connections	12	11
Customers Served.....	5,235	5,270
Capital Credits Paid to Estates ..	\$ 20,547	\$ 27,544
Average outage time in minutes per member	15	37
Miles of Line		
Overhead	2,324	2,323
Underground.....	256	264

LOOK UP POWER LINES MAY BE OVERHEAD

factors like high blood pressure and cholesterol. "It's about how you manage your whole life," Hartley said.

Schultz was scheduled to present the findings Monday at the Alzheimer's Association International Conference in

Copenhagen, Denmark. Because the findings are being presented at a meeting, rather than published in a peer-reviewed journal, they should be viewed as preliminary.

Source: Health Finder

Protect your family farm with our quality crop insurance



In just minutes, a hail storm can wipe out an entire year's worth of profits. We can't control Mother Nature, but we do provide strong insurance protection for your crops — at affordable prices.

Call our office today for details or a free quote.

GRINNELL MUTUAL
REINSURANCE SINCE 1909

A Policy of Working Together

**Grow with
Grinnell**

Red Lake County Insurance
Red Lake Falls, MN
218-253-2177 • rlci@gvtel.com
www.redlakecountyinsurance.com

Farmers Union Oil Company

Thief River Falls 218-681-3512



- Fertilizer
- Petroleum products
- Town and country deliveries
- Tires, batteries, accessories
- Farm supplies

WILCOX PLUMBING AND HEATING, Inc.

RED LAKE FALLS

Plumbing/Heating/Air conditioning

BILL H. MOSER, Master Plumber
License No. 1770PM
BILL J. MOSER, Master Plumber
License No. 6039PM
JASON JOHNSRUD, Master Plumber
License No. 064717PM
Refrigerant Certified No. CFR089400285



- In-floor heating • Oil furnaces
- Pressure systems • Gas furnaces
- Electric heat pumps

FREE ESTIMATES
COMPLETE SALES
AND SERVICE

218-253-4347

The Head-Quarters Hair and Tanning Salon

HAIRSTYLING
FOR MEN AND
WOMEN

PARK PLACE MALL
RED LAKE FALLS, MINNESOTA

218 253-4223

Security STATE BANK



- Operating loans
- Vehicle loans
- Farm real estate loans
- Consumer loans

"We appreciate your business."

218-796-5157
Fax 218-796-5158

anthony.holthusen@ssboklee.com



This
advertising
space
is
available

VOLTS AND JOLTS FEATURE OF THE MONTH

Tranquil Amiot Farm endures throughout the century

By Seleena Navar

Pulling into the driveway of the Regis and Bobbie Amiot farmstead, one can't help but feel the tranquility. Maybe its the pair of German Shorthairs, Tootsie and Shelby, frolicking in the grass outside. Perhaps its the giant weeping willow, which Regis remembers as a small tree when he was just a boy, positioned in the center of the turn around drive. Then again, it could be the welcoming sign which proudly declares "The Amiot, Regis, Bobbie, Taylor and Mallory" all lived and grew here, as a family, once upon a time.

As the Amiot farmstead celebrates a milestone of distinction, being recognized as a Century Farm, it seems fitting to revisit its roots and realize where it all began, 100 years ago, when Joseph Amiot, Regis' grandfather, bought the farm northwest of Gentilly in 1914.

Joseph, originally from east of Gentilly, married his wife, Olive Fortier, on Oct. 10, 1904. Ten years later the couple purchased the bare farmstead, building a shed in which they lived with their family. In 1916 a grainery was constructed and the family resided in that until the completion of their home later the same year.

At that time Joseph, who bought his first tractor in 1924, a four horse-power Fordson, farmed small grains along with raising pigs, chickens and dairy cattle. Thankfully the couple had six children to contribute to the on-going tasks of life on the farm, and one of their sons, Napoleon, would decide that the farmstead was the right place for



The Amiot family proudly displayed their Century Farm plaque during the Polk County Fair in Fertile. They are, from left, daughter-in-law Diana, daughter Mallory, Bobbie, Regis and son, Taylor. The future of the Amiot farm rests in the hands of Taylor and Diana as they will be moving onto the farmstead in 2016.

him. He, along with his wife, Alexina, purchased the farm from his parents in 1947, one year after Joseph and Olive retired to Crookston.

Napoleon's love of the farm dates back to his birth on Dec. 11, 1916. That year the family home was completed, and Napoleon came along just in time to grace the new structure, having been born in what is now a bathroom, a tidbit he loved sharing over the years with his many grandchildren. When Napoleon and Alexina bought their farmstead, the home was just over 30 years old.

Business on the farm at that time became more focused on

small grains and dairy cattle and the new owners, who honeymooned on that very farmstead, raised five children of their own. In 1954 they purchased 160 acres, selling the land in 1973 as they went about the business of retiring.

True to form, one of the Amiot men, who came of age on the farm, decided it was the right place to be and raise his family.

Into the picture entered Regis, the second son of Napoleon and Alexina, who married Crookston native Bobbie Romance in 1975. Bobbie, the daughter of a stay-at-home mom and father who worked for the Minneapolis Star

Tribune, was not a country girl and admitted, "I was a little leary about country living, but adapted quite quickly."

By that time the farm was much quieter than in the days of yore. According to Regis, the dairy cattle left in 1959, so when he took over it was strictly a crop farm with potatoes, small grains and soybeans filling the fields.

Nevertheless Bobbie, who graduated from Northland College in Thief River Falls with a degree as a medical secretary prior to marrying Regis, tried her hand at driving grain truck during harvest time. The couple laughed as they recalled

her stint behind the wheel didn't last long. "I got fired," she said teasingly.

Bobbie has stayed busy with employment at RiverView Health in Crookston for 39 years as a medical transcriptionist and for the past two years as clinic support specialist. Regis remained the man in charge on the farm, relishing in his years of self-employment, and at the present time he is employed by Tri-Valley Heartland Express as a bus driver and rents out his farmland.

Along the way the couple has raised two children, son Taylor, now 31, and daughter Mallory, 29. In 1988-1989 they built an

addition to the original house and completed remodeling on the impressive three-bedroom structure.

Of his decision to carry on the farming tradition of his father and grandfather before him, Regis kidded, "The only way for my parents to get rid of me was to move into town!" He went on to reveal that he had lived on the farmstead the longest of all generations, and when he and Bobbie move into Crookston, which is planned for 2016, he will have logged 63 years on the farm, stating, "Even Dad left when he was about 55."

The Amiot farm will soon become home for a new generation as son Taylor, a civil engineer by Williston, N.D., and his wife, Diana who is a crop production research specialist, plan to take up residence there and write the next chapter in the farm's history. Their story begins with country roots as Diana, the daughter of Paul and Kathleen Hanson, grew up just across the way from her future husband near Gentilly.

It will be a bittersweet transition for Regis, who recalled the days when his grandpa used to come out and check on the farm while Regis worked alongside his own father. Regis said there will be times when he will stop by and visit the nice raspberry patch which the farm now boasts, he will pick a basket to take home to Bobbie, and soak up a little of the peace and tranquility which life on the farm has offered to his generation, the ones before him, and the ones yet to come, as the Amiot Farm embraces life in its next century.



An aerial view shows the bustling Amiot farmstead, located northwest of Gentilly, sometime in the 1950's with the original home and several outbuildings which once contained pigs, chickens and cattle.



This photo of the Amiot Century Farm was taken in 2010 and shows how the property has evolved throughout the years, with many mature trees surrounding the homestead.



The tranquility of the Amiot Farm can be described as magical. A sign welcomes visitors to the well-manicured property and a majestic weeping willow tree sits in the center of the turn around driveway.

Bray-Gentilly Mutual Insurance Co.

Locally Owned and Operated
Serving Policyholders Since 1900

218-683-3200

2017 Hwy. 59 SE • P.O. Box 592
Thief River Falls, MN 56701

INSURANCE FOR
FARMS, HOMES
AND PERSONAL
PROPERTY

TELEPHONE US FOR AN
AGENT NEAR YOU!

Email:
1bodyrft
@hotmail.com



1BODY
HEALTH & FITNESS

Park Place Mall,
Red Lake Falls
253-2111

Fitness Center
Hours:
5 a.m.-Midnight Daily

www.1bodyhealthandfitness.com

Kilen's Custom Cleaners

- Commercial
- Residential
- Custodial



Specializing in
Water, Fire & Soot Restoration

Jordan Kilen - Owner
(218) 686-2591

www.kilencustom.com

— Free Estimates —

"Achieving excellence
one customer at a time"

Want to cut your heating cost by up to 50%?

Buy a YORK Affinity
heat pump today!



GROVE MECHANICAL, INC.

Your hometown heating &
air conditioning team!
Serving Crookston and the surrounding
communities for 30 years.
(218) 281-3863

OFFICE PHONE
253-2168

OUTAGE PHONE
253-2200

1-800-245-6068



Red Lake Electric
Cooperative, Inc.

One of the Minnesota Power Systems



Red Lake Electric lineman Troy Schmitz (left) and PKM lineman Joe Marcotte (right) work together as they unframe a broken three-phase pole. Twenty five broken poles were reported as a result of the tornado that passed through the area on July 21.

Should I co-sign a loan?

It's not unusual for a lender to require a co-signer when lending to a first-time borrower or a borrower with a credit history that does not meet the lender's standards. By co-signing a loan, you promise to pay any missed payments or even the remainder of the loan debt if the borrower defaults, and you link your credit history to that of the borrower, subjecting your credit score to the behaviors of someone else.

Before committing your financial assets to vouch for someone else's loan worthiness, it's wise to evaluate the risk and consider all options. Ask yourself the following questions to (6226001.04, Angela Klasen) gain a better understanding of the risk

involved and whether or not you should co-sign a loan.

How well do I know the borrower, and what is their character?

Co-signing a loan should be reserved for trustworthy people who you know well. Ask yourself if the personal responsibility and financial habits you've seen the borrower display make you comfortable or uncomfortable with co-signing for their loan.

Also, evaluate your comfort in having frank financial discussions with the borrower. If you've not yet discussed the potential consequences of co-signing the loan with the borrower, now is the time to do so. Be honest about any reservations you have and the finan-

cial burden their default would have on your financial future. Use their response to inform your decision.

Can I afford to pay back the loan?

Even if you and the borrower both assume that he or she will pay back the debt on schedule, circumstances can change, and you should be prepared to assume payments at any time.

Evaluate your budget. If you don't have a monthly budget, now is an excellent time to create one. Try an online budget tool if you need help (<https://www.budgetpulse.com>).

If the primary borrower defaults, you will need cash on hand every month to pay back

Are you grounded? GFCI outlets can help!

Did you know there are different types of electrical outlets? Each are designed for different purposes; however, there is one specific type that stands high above the rest—the ground-fault circuit interrupter (GFCI) outlet. GFCIs have saved thousands of lives and cut the number of electrocutions in half since the 1970s. If your home lacks GFCI outlets, don't fret—you can learn how to "get grounded."

GFCIs are the most efficient outlet in protecting from electrical shock. If it senses a loss of current, the outlet switches off power to that circuit. These devices can either be installed in your electrical system or built into a power cord. The third hole at the bottom of the outlet is known as the "ground" slot, and it moni-

tors electrical currents that flow through the left "neutral" slot and the right "hot" slot on each outlet.

A GFCI can react faster than a blink of an eye to any imbalance of power by immediately shutting off the electrical current. These outlets are now a requirement in all places where water could potentially come into contact with electrical products such as bathrooms, garages, outdoors and kitchens. GFCIs are not exclusive to three-prong outlets. They can be installed into standard outlets, and there are even portable devices available when installation is not practical.

GFCIs should be tested at least once a month to ensure they are working effectively. The first step you need to take

is to test an item, such as a lamp, that visibly powers on when plugged in. Push the "reset" button to prepare the outlet then push the "test" button. Did your lamp turn off? If it did, the GFCI is working properly. Now, hit the "reset" button once again to power it back on. If your lamp did not power off, (4911001.05, Kenneth Graves) then you should contact a certified electrician to correct the problem.

Next time you have a free moment, take the time to look around your house. If you're not "grounded," consider updating your electrical outlets to GFCIs.

Sources: *Electrical Safety Foundation International, Consumer Product Safety Commission*



PKM linemen Ben Pahlen, in the bucket, and Joe Marcotte, on the ground, worked to reattach wires to the new three-phase pole. Red Lake Electric also received help from Clearwater-Polk linemen Travis Huot and Josh Hendricks and PKM lineman Scott Slusar.

AUTO PAY OFFERED BY RLEC

Red Lake Electric Cooperative is pleased to offer you Auto Pay. Now you can have your monthly energy bill paid automatically from your checking or savings account. You can receive the Auto Pay service by completing the Auto Pay sign-up sheet and returning it to Red Lake Electric Cooperative.

The Auto Pay service is free of charge. Not only is this service free, you will eliminate the expense of writing a check, postage to mail your payment and no more late payment penalties because your bill will be paid on time, every month, for you.

Your payment will be automatically made for you on the 5th of each month. If the 5th

falls on a weekend or holiday, the payment will be made on the next business day. You will continue to receive your monthly energy bill as you have in the past, indicating the amount that will be withdrawn from your bank account. The proof of your payment will appear on your bank statement and your next month's energy bill statement.

Continue to pay your monthly bill until you are notified on your bill that the Auto Pay has been set up for you.

If you have any questions about the Auto Pay please call RLEC at 800-245-6068 or 218-253-2168.

AUTO PAY SIGN-UP SHEET

I authorize Red Lake Electric Cooperative (RLEC) and the bank listed below to initiate variable entries to my checking or savings account. This authorization remains in effect until I notify RLEC in writing to cancel it in such time as to allow RLEC to act on it.

RLEC ELECTRIC ACCOUNT # _____

NAME (PRINT) _____

ADDRESS _____

TELEPHONE # _____

NAME OF FINANCIAL INSTITUTION _____

CHECKING ACCOUNT # _____

SAVINGS ACCOUNT # _____

SIGN HERE TO AUTHORIZE _____

Please return this authorization form with a blank, voided check to:
Red Lake Electric Cooperative, P.O. Box 430, Red Lake Falls, MN 56750



Red Lake Electric Cooperative, Inc.

One of the Minnkota Power Systems

Phone	218-253-2168
Toll-free	1-800-245-6068
Fax	218-253-2630
After-hour outage	218-253-2200
Office hours	Monday-Friday, 8:00-4:30
E-mail:	redlake@minnkota.com
Web site	www.redlakeelectric.com

Call Before You Dig - Gopher State One Call • 1-800-252-1166

P. O. Box 430 • 412 International Drive SW • Red Lake Falls, MN 56750-0430

Association of the French of the North presents CHAUTAUQUA & FRENCH-CANADIAN-MÉTIS FESTIVAL

August 22, 23 & 24, 2014

FREE ADMISSION



Michael Audette
Champion Fiddler



Ça Claque
French-Canadian Band & Dancers



Ted Stone
Author & Historian

Friday, Aug. 22

9:00 p.m. Bonfire, songs and storytelling
Dan Schmitz, music & guests

Saturday, Aug. 23

11:00 a.m. French Festival food specialties
12:30 p.m. Welcome by Virgil Benoit, AFRAN President
1:00 p.m. Michael Audette & Band, St. Anne, Manitoba
2:00 p.m. Ça Claque, Manitoba
3:15 p.m. Ted Stone stories, Manitoba
4:00 p.m. Artists & Artisans Highlights
5:00 p.m. Mass at the Shrine of our Blessed Mother
6:00 p.m. AFRAN Supper at the Park
(\$10 donation suggested)

**Dance to the music of
Michael Audette & Band
9:00 p.m. at The Spot
in Red Lake Falls**

ALL DAY ACTIVITIES

SILENT AUCTION: Bids open at 10:00 a.m.
closing at 3:45 p.m. Saturday & 3:00 p.m. Sunday

• Artists & Artisans •
• Looming • Wool Spinning • Wood Carving •
• Bread Making • Children's Activities •

EDUCATION TENT

Local Artists & Culture
• Lawrence Brunelle, Life through the eye of the camera
• Alme-Nault music group, French Canadian Métis tunes
• Art of creating story out of history, Ted Stone

Sunday, Aug. 24

11:00 a.m. French Festival food specialties
12:30 p.m. Welcome by Virgil Benoit, AFRAN President
1:00 p.m. Michael Audette & Band
2:00 p.m. Ça Claque, Manitoba
3:15 p.m. Ted Stone stories, Manitoba

Old Crossing and Treaty Park

Huot, Minnesota
9 miles SW of Red Lake Falls or 7 miles NE of Gentilly
on County Rd. 11. Follow the brown park signs.
(Funding in part by the McKnight Foundation & Red Lake County Historical Society)



This activity is funded in part by a grant from the Minnesota State Arts Council and the Minnesota arts and cultural heritage fund, an appropriation by the Minnesota State Legislature with money from the sale of the people's Minnesota art. November 2008

Local 4-Hers receive awards from Red Lake Electric

Each year, Red Lake Electric Cooperative sponsors awards for 4-H exhibitors at area county fairs.

Pictured are 4-Hers who received awards at the Pennington County Fair held July 16 through 20 and the Marshall County Fair held July 23 through 27.



Tucker Lunke from the New Maine 4-H Club was the Jr. Showmanship Champion in the Swine Division at the 2014 Marshall County Fair. Tucker's parents are Brad and Sara Lunke of rural Thief River Falls.

Photo courtesy of Marshall County Extension



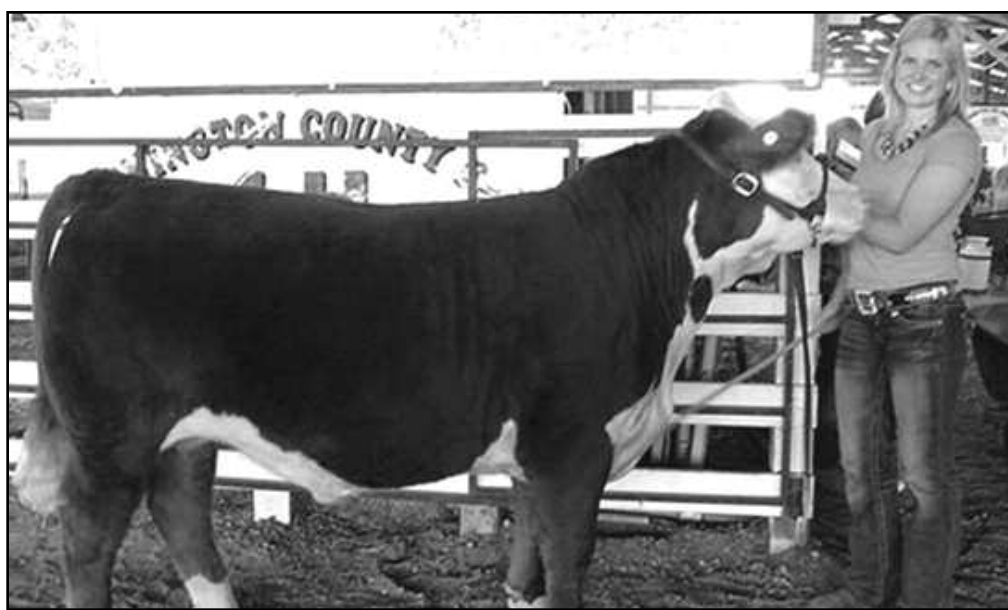
Winning an award for Top Dairy at the 2014 Pennington County Fair was Samantha Larson of the Steiner 4-H Club. The award was sponsored by Red Lake Electric Cooperative.

Photo courtesy of Thief River Falls Times



Samantha Larson of the Steiner 4-H Club won the Champion Ewe Award at the 2014 Pennington County Fair. The award was sponsored by Red Lake Electric Cooperative.

Photo Courtesy of Thief River Falls Times



Malena Rupprecht of the Silverton 4-H Club won the Beef Rate of Gain Award with the steer she entered at the 2014 Pennington County Fair. This award was sponsored by Red Lake Electric Cooperative. Malena will be taking her steer to the State Fair.

Photo courtesy of Thief River Falls Times

Tip of the month

During summer months our homes can be extremely hot, making living conditions uncomfortable. Before you fire up your air conditioner, (3728026.01, Brian Peterson) try cooling off with a ceiling

fan first. Using ceiling fans can actually raise your thermostat setting by four degrees and still feel just as comfortable.

Source: U.S. Department of Energy

Give your home an electrical checkup

From refrigerators to lights to computers—electricity is an important and integral part of our everyday lives. Just because it has become such an easily overlooked part of our daily scenery, does not mean that we should overlook the importance of using it safely. Keep your family safe in your home by brushing up on how to use electricity safely and by periodically giving your home an electrical checkup.

“Any type of appliance that uses electrical power can have an electrical failure or malfunction,” says Molly Hall, executive director of the Energy Education Council’s Safe Electricity program. “Take steps in your home to minimize the risk.”

Remember, the combination of electricity and water is dangerous. Make sure outlets in the kitchen, bathrooms, laundry, workshop, basement, garage, or any area with access to water are equipped with a ground fault circuit interrupter (GFCI).

A GFCI monitors the flow of electricity in a circuit. If there is an irregularity, even a small one, the flow of electricity is shut off, preventing an electric shock. GFCIs should be tested monthly to ensure they are working properly.

Periodically check outlets for loose-fitting plugs. Replace missing or broken wall plates so wiring and components are not exposed. If you have young children or pets at home, install tamper resistant outlets (TROs) or cover unused outlets with plas-

tic safety caps.

Never force plugs into outlets, and never remove the grounding pin (third prong) to make a three-prong plug fit a two-prong outlet. A two-pronged outlet may not be grounded and should be updated and replaced by a qualified electrician. Additionally, avoid overloading outlets with adapters and too many appliance plugs.

“It can be very tempting to add just one more plug to that outlet or power strip, but adding one more electrical device just might overload the outlet and (4432021.03, Larry and Bea Kruse) start a fire, so fight the urge to find ways to plug additional devices into an outlet,” Hall advises. “As an alternative, unplug a device—or two—before plugging in a new one.”

Also, as a safety precaution, make it a habit to remove a cord from the outlet by pulling on the plug rather than the cord itself. Make sure cords are not frayed or cracked, placed under carpets or rugs, or located in high traffic areas. If a cord is damaged in any way, replace it. Do not nail or staple them to walls, floors or other objects.

“Extension cords are designed for temporary use only,” Hall says. “They should never be put in place as a long-term solution. A qualified electrician can help you install the necessary wiring and receptacle outlets for a permanent solution.”

Check wattage to ensure light bulbs match the fixture

requirements. Replace bulbs that have higher wattage ratings than recommended. Screw them in securely. Also, consider using LED or CFL bulbs to reduce energy use in your home.

Make sure fuses are properly sized for the circuit they are protecting. If you do not know the correct rating, have an electrician identify and label the correct size to be used. Always replace a fuse with the same size you are removing. Check to make sure circuit breakers are working properly.

If an appliance repeatedly blows a fuse, trips a circuit breaker, or has given you an electrical shock, immediately unplug it and have it repaired or replaced. Look for cracks or damage in wiring and connectors, and use surge protectors to protect electronics.

Check periodically for loose wall receptacles, wires, or loose lighting fixtures. Listen for popping or sizzling sounds behind walls. Immediately shut off, then professionally replace light switches that are hot to the touch and lights that spark and flicker.

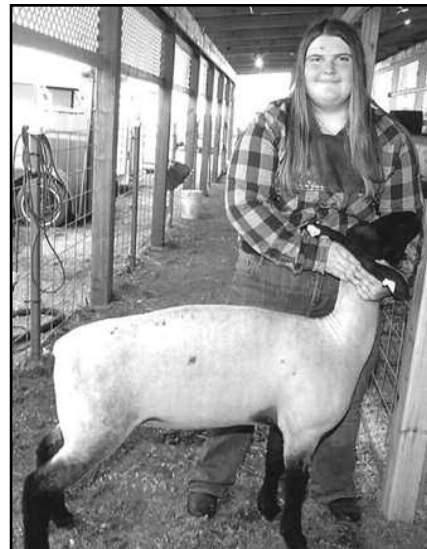
As you continue to upgrade your home with more lighting, appliances, and electronics, your home’s service capacity may become overburdened. If fuses blow or trip frequently, have a professional determine the appropriate service requirements for your home.

For more information on electrical safety, visit SafeElectricity.org.



Dustin Dahl from the New Maine 4-H Club was the Sr. Showmanship Champion in the Swine Division at the 2014 Marshall County Fair. Dustin's parents are Kelly and Alice Dahl of Newfolden.

Photo courtesy of Marshall County Extension



Steiner 4-H member Samantha Larson received an award at the 2014 Pennington County Fair for Market Lamb Rate of Gain. The award was sponsored by Red Lake Electric.

Photo courtesy of Thief River Falls Times

Set your thermostat to reliable



Whether you are looking for greater reliability, increased comfort, higher efficiency or more choices, consider the benefits of electric heat.

Electricity from Red Lake Electric Cooperative is produced by power generators that operate 24-7. That electricity is sent directly to you at the touch of a button, which means there are no outside sources impacting the cost or delivery of your home's heat.

When it comes to warmth and comfort, our only goal is to ensure you receive a powerful value for your heating dollar – each and every day.

Powerful Value
Every day.



Red Lake Electric
Cooperative Inc.

218-253-2168 or 1-800-245-6068 • www.redlakeelectric.com

IV PHOTOGRAPHY

SUMMER SPECIAL

AUGUST 15 - SEPTEMBER 15

FAMILY “MINI” SESSION - \$100

INCLUDES:

- 1 HOUR SESSION ON LOCATION
- 1 8X10 AND 2 DIGITAL FILES

SENIOR “MINI” SESSION - \$150

INCLUDES:

- 2 HOUR SESSION - ON LOCATION
- \$25 PRINT CREDIT AND 2 DIGITAL FILES

CALL: 218-253-2380

IVPHOTOGRAPHYLLC@OUTLOOK.COM

Customers adding grain storage, call us first

Constructing a grain bin too close to an electric power line is not only hazardous, but it's a violation of the National Electrical Safety Code (NESC). This regulation lists specific minimum distances that must be maintained (both horizontal and vertical clearances) between the bin and any utility-owned overhead lines.

A bin constructed too close to a power line may need to be moved, or the

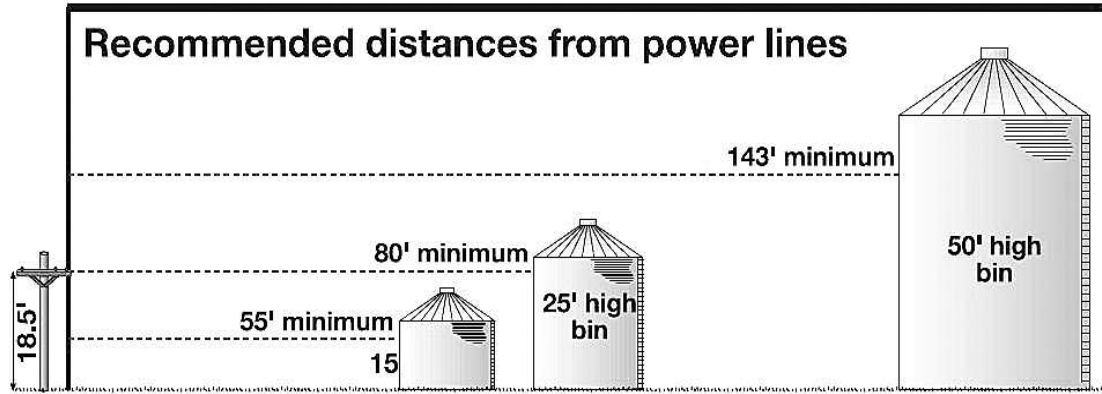
power line must be rerouted. Correcting a Code violation is expensive for the property owner and the power supplier.

The (5526004, Daniel J. Schmitz) clearances mandated by the NESC apply to bins that were constructed or expanded after August 1989.

We encourage anyone who thinks they have a violation, or is planning to build a bin to contact Red Lake Electric Cooperative Line Department. Call Bob Guillemette at 253-2168 or 800-245-6068.



Red Lake Electric Cooperative, Inc.
One of the Minnkota Power Systems



RED LAKE ELECTRIC TRUST
Post Office Box 430
Red Lake Falls, MN 56750

OPERATION "ROUND UP®" GRANT APPLICATION FORM

1. Name of Organization: _____

2. Date Organized: _____

3. Address: _____
Street or Post Office Box
City or Town State Zip Code

4. Contact Person: _____
Name Title

5. Phone Number: _____
Work Home

6. What is the mission or purpose of your organization; i.e. what kind of services do you provide?

7. Is the organization requesting funding exempt from payment of income tax under 501 (c)3 of the Internal Revenue Code?
Yes No

8. A copy of financial statement(s) for most previous year should be provided. If not available attach a statement detailing revenue, sources of revenue, program expenditures, administrative expenses and cash/assets on hand.

9. Approximate number of individuals, families or groups served in the Red Lake Electric Cooperative service area of Pennington, Red Lake, Marshall (east half), and Polk (Parnell, Crookston, Fairfax, Kertonsville, Tilden, Grove Park, Badger, and Chester Townships).
Individuals
Families
Groups

10. Does Agency serve outside of the Red Lake Electric Cooperative service area as defined in #7?
Yes No
Yes, please provide information on number served and location.

11. State Purpose of Organization's/Agency Request: (include amount requested and specifics of how funds will be used).

12. List other sources of funding for use of request as described in the above:


The information contained in this statement is for the purpose of obtaining funding from the Red Lake Electric Trust on behalf of the undersigned. Each undersigned understands that the information provided herein is used to determine funding, and each undersigned represents and warrants that the information provided is true and complete and that the Red Lake Electric Trust may consider this statement as continuing to be true and correct until a written notice of a change is provided. The Red Lake Electric Trust is authorized to make all inquiries they deem necessary to verify the accuracy of the statements made herein.

NAME OF ORGANIZATION

SIGNATURE OF REPRESENTATIVE

DATE

Are you wondering why your electric bill isn't in your mail box on the 20th?



Remember RLEC has changed the dates of the billing cycle to coincide with the calendar month. You should receive your electric bill by the 10th of each month and your payment must be postmarked by the 25th to avoid a late charge. Any questions or concerns, call 800-245-6068 or email redlake@minnkota.com.

Respect those “green boxes” called transformers

Most homeowners have seen those green metal boxes located near a house, and realize they have something to do with electrical service. About the size of a dog house, these boxes are called pad-mounted transformers and they're a key part of the underground electrical system that delivers high voltage power to your home.

The role of these green boxes is to take high voltage electricity supplied by your utility, and convert or “transform” it into lower voltage power that can be used by homes and businesses. Pad-mounted transformers are only found where electric service is buried underground, rather than supplied from overhead lines and poles.

Planting shrubs around these transformer boxes, or blocking their access in any way creates a hazard for your power supplier. Just as blocking a fire hydrant is a safety violation, (4322003.02, Jean B. Wold) anything that obstructs access to a transformer creates a similar hazard.

In the event of an electrical

emergency, utility crews need quick access to unlock and open the transformer cover. A common example is a house fire, where power must be turned off to allow firefighters to safely enter the home and extinguish the blaze. Any effort and time wasted in removing shrubs, fences or other obstructions around the transformer could result in further loss of property or even loss of life.

When considering any landscaping near electrical equipment, keep in mind these clearance and safety guidelines:

Always maintain clearance of 10 feet in front of the transformer (the side with the lock) and four feet from all other sides. Look for caution stick-

ers on transformers to clarify safety measures and clearance distances.

Never dig beside a transformer or (3128002.04, Trent M. Stately)install fences, storage buildings or plantings near them. Utility crews need clear access 24 hours a day to safely perform necessary maintenance or restore power.

Adequate space is needed for air circulation around transformers and other electrical equipment. This allows heat to escape during hot weather and extends the life of the equipment. Excessively high temperatures might eventually cause oil leakage, which could further increase the chance of equipment failure.

During your next landscaping project, please resist the temptation to “hide” your transformer behind plantings or other obstructions. These green boxes play a crucial role in providing electricity to your property.

Source: Rural Electricity Resource Council



3rd Annual
CRAZY DAYS
at Wrights Everything
Consignment

Saturday, August 23rd – 10 a.m. to 8 p.m.



50% OFF

25% OFF

\$1 DVD'S
\$1 Baskets

- Clothing, Shoes & Purses
- Kitchen Accessories & Small Appliances
- Bathroom Essentials • Luggage
- Toys, Games & Puzzles
- Office Supplies • Lamps & Pictures
- Christmas Room • Curtains
- Man Cave • Antiques
- Saddles & Tack

Crazy Sales Throughout The Store All Day Long
Free Hotdogs, Chips & Ice Cream Cones (11 a.m.- 2 p.m.)
111Main Ave. Downtown Red Lake Falls – 218-253-2091
You can't go Wrong at Wright's