



Volts and Jolts

Published monthly for the members of
RED LAKE ELECTRIC COOPERATIVE, Inc.

One of the Minnkota Power Systems

SERVING THE FOUR-COUNTY AREA OF MARSHALL, PENNINGTON, RED LAKE AND POLK
and a portion of the lands of the Red Lake Band of Chippewa

VOL. 50 – NO. 10

RED LAKE FALLS (RED LAKE COUNTY), MINNESOTA 56750

AUGUST 2015



Bailey Culkins of the Happy Go Lucky 4-H Club received awards for top rabbit and sheep exhibitor at the 2015 Red Lake County Fair. Both awards were sponsored by Red Lake Electric Cooperative. Photo courtesy of Oklee Herald

Operation Round Up® Grant Applications due Tuesday, September 8th.

Organizations involved in community projects and charities are encouraged to apply for funds from Operation Round Up at this time. Completed grant applications are due in the Red Lake Electric Cooperative (RLEC) office by Tuesday, September 8, 2015.

Operation Round Up is a program adopted by RLEC headquartered in Red Lake Falls. Members choosing to “round up” their monthly electric bill payment provide funds for this effort. Today 94% of RLEC members now choose to contribute pennies each month to enhance their communities.

Funds will be donated primarily to nonprofit organizations to help fund specific projects or programs. Since the program began in 1993, \$454 thousand has been granted to community organizations and charities. Money is donated for the betterment of the commu-



nity within the outside service area boundaries of RLEC.

The Red Lake Electric Trust Board of Directors determines grants. Board members are Patty Mickelson, Oklee; Van Swanson, Thief River Falls; Tishara Melcher, Middle River; Roger Johanneck and Bonnie Christians, Crookston.

To apply for Operations Round Up grants, organizations should contact the RLEC office in Red Lake Falls at 218-253-2168 or 800-245-6068. A short application must be completed and submitted along with a financial statement

Final EPA carbon rules to burden co-op members

North Dakota has second-most stringent CO2 goal

The Environmental Protection Agency (EPA) finalized regulations Aug. 3 to limit carbon dioxide (CO2) emissions from power plants – a move that will dramatically reshape how America generates and uses electricity, if the rules survive legal challenges.

President Obama announced the rule, referred to as the Clean Power Plan, requiring a 32 percent cut in CO2 emissions nationwide by 2030, compared to 2012 levels. The EPA determined different targets each state has to meet in order to achieve the overall national reduction goal.

Minnkota Power Cooperative, Red Lake Electric Cooperative's wholesale power provider, generates all of its electricity in North Dakota, which has the nation's second-most stringent state reduction goal at 45 percent. This is a steep increase from the 11 percent goal the EPA originally proposed for North Dakota in June 2014. Minnkota and others in the state's energy industry are currently working to understand the rationale behind more than quadrupling the requirement without providing notice.

An initial review of the rule indicates the established CO2 reduction target likely cannot be met without some North Dakota (2730007.00 Robert Bjorgaard) coal facilities being shut down or operating at significantly reduced levels. Closing plants would strand hundreds of millions of dollars in investment, a burden that would be carried by electric

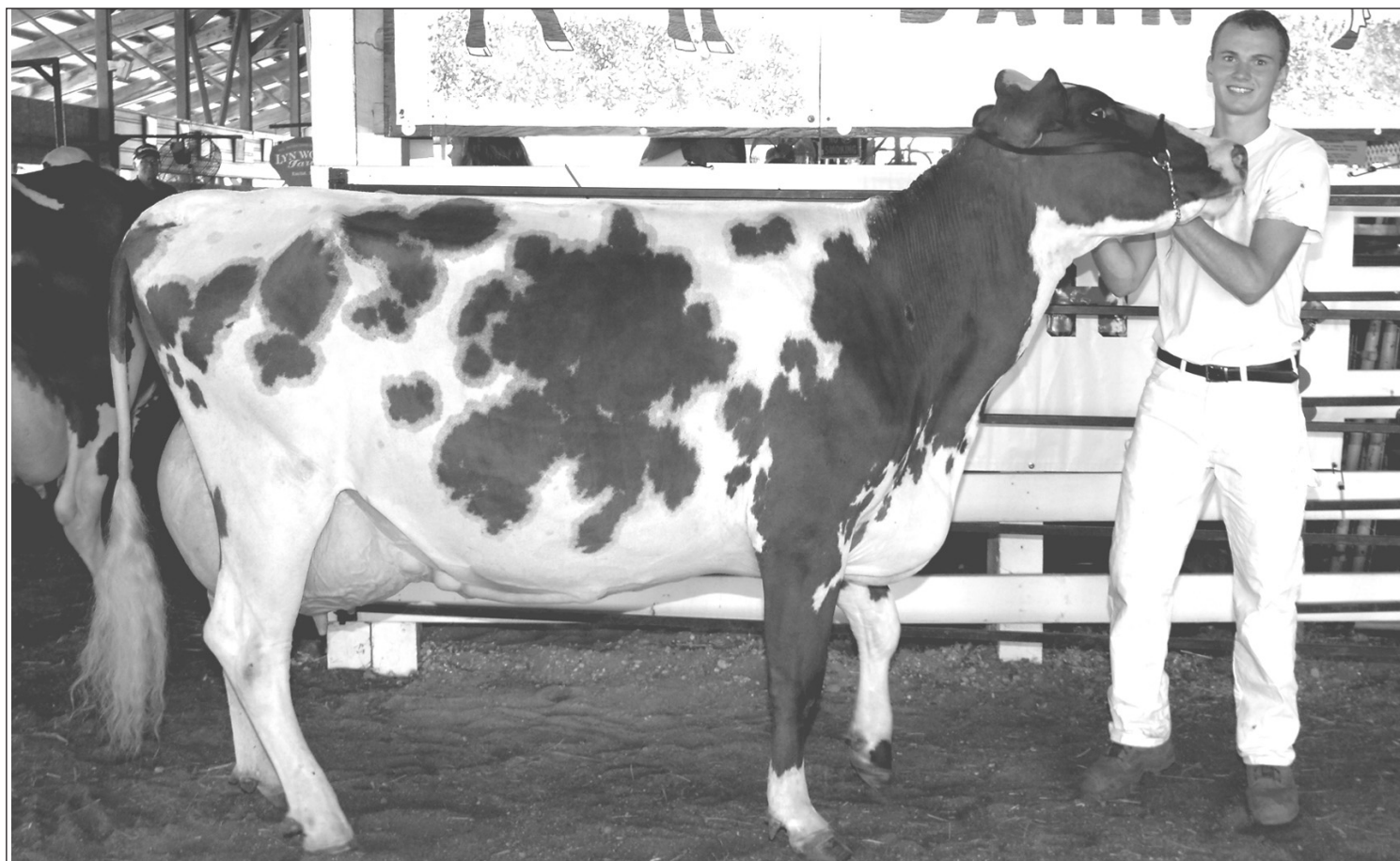
consumers in the region.

“The EPA's final rule has the potential to substantially impact local communities that depend on reliable, low-cost power generated from North Dakota's seven coal-based power plants,” said Mac McLennan, Minnkota president and CEO. “While we are still reviewing and analyzing this 1,560-page rule, it is clear that electric rates in Minnesota and North Dakota will be affected.”

Minnkota is concerned about the regulation of CO2 because its primary source of electric generation is the Milton R. Young Station, a two-unit coal-based power plant located near Center, N.D. The Young Station provides reliable, cost-effective electricity for more than 128,000 retail consumers, including many of the region's homes, farms, schools and businesses. In addition to coal, 30 percent of Minnkota's generation capacity comes from wind and another 10 percent comes from hydro.

Minnkota provides wholesale electricity for member cooperatives in eastern North Dakota and northwestern Minnesota. The carbon reduction goal for Minnesota is 42 percent, although it remains to be seen how that will impact Minnkota.

Since the rule was originally proposed last year, it has drawn strong criticism from utilities, states and business interests. That opposition will translate into significant legal challenges in the coming



The dairy rate of production award at the 2015 Pennington County Fair was presented to Steven Hanson of Goodridge. In one year, Hanson's dairy cow produced 22,983 pounds of milk, 869 pounds of fat, and 722 pounds of protein. The award was sponsored by (536003.03 Alan & Rose Bruggeman) Red Lake Electric Cooperative. Photo courtesy of Thief River Falls Times

In this month's Volts and Jolts

Page 2
Manager's Comments
Report from the office

Page 4
Feature of the Month:
The Maijala Century Farm

Page 5
Power Savers Rebates

Page 6
Heating Options

Page 8
Operation Round Up Grant
Application Form
ACH Promotion

from the organization. The grant application form is available on the Cooperative's Web site: www.redlakeelectric.com

For more information contact Roger Johanneck, General Manager of RLEC, at 218-253-2168 or 800-245-6068.

months and years. At least 16 states have already indicated that they will enter into a lawsuit with the EPA.

In the meantime, state officials will have until September 2018 to submit a final plan to the EPA identifying what each individual power producer must do to meet the goal. Significant CO2 reductions would need to be achieved by the start of the compliance period in 2022. The strict timeline will require utilities to make irreversible, long-term decisions and investments within the next few years. Until that happens, the total impact to Minnkota, its members and end-use consumers remains difficult to quantify.

States will have three primary compliance options: 1) Improve coal plant heat-rate efficiency, 2) Replace coal with natural gas plants and 3) Increase the use of renewables and nuclear power. These options fail to take into consideration the unique characteristics of each state and its available resources. They also provide no credit to companies, like Minnkota, that were early adopters of renewable energy.

“Minnkota supports a balanced approach to developing our nation's energy policy that carefully considers reliability, affordability and environmental goals,” McLennan said. “By enacting this rule, the EPA has given itself a new role in dictating energy policy, determining how we generate electricity and, ultimately, how our consumers use electricity.”

Minnkota's environmental track record

Best available power plant technology

Minnkota meets or exceeds all current environmental compliance requirements at its generation facilities. About \$425 million has been invested in emission-control projects at the Minnkota-operated Milton R. Young Station during the last decade. The result at the coal-based plant has been significant reductions in sulfur dioxide (95 percent), nitrogen oxide (60 percent) and mercury (60 percent) emissions.

Wind energy leader

Minnkota has been an industry leader in wind energy for more than a decade. In 2002, the cooperative built the first commercial-scale, utility-owned wind turbine in the state of North Dakota. Currently, 30 percent of Minnkota's electric generation capacity comes from wind – one of the highest percentages in the nation. Minnkota is a former recipient of the U.S. Department of Energy's Wind Energy Cooperative of the Year.

Robust energy-efficiency programs

Minnkota and its members have an established track record of encouraging residential and business consumers to use energy wisely. Since 2010,

Minnkota has administered an energy efficiency and conservation program for its participating Minnesota distribution cooperatives and associated municipals. These utilities annually reduce their electricity sales by at least 1.5 percent through incentive-based and education programs. Collectively, the group recently saved its 140 millionth kilowatt-hour (kWh).

Innovative demand response program

Minnkota operates one of the most advanced demand response programs in the nation. Beginning in 1977, the demand response program is voluntary for consumers who allow Minnkota to interrupt electric heaters and other loads in exchange for a discounted retail electric rate. This capability enables Minnkota to more efficiently manage its existing power resources and avoid the need to acquire new generating resources that would carry a very high cost.

The program is popular with about 50,000 consumers participating. Loads most commonly involved in the program are dual-fuel heating systems, water heaters, storage heaters and commercial loads with

Local 4-Hers receive awards from Red Lake Electric Cooperative

Each year, Red Lake Electric Cooperative sponsors awards for 4-H exhibitors at area county fairs.

Pictured are 4-Hers who received awards at the Red Lake County Fair held June 26 through 28, Pennington County Fair held July 15 through 19 and the Marshall County Fair held July 22 through 26.

Not pictured but received awards sponsored by Red Lake Electric Cooperative at the 2015 Red Lake County Fair for demonstrations are: Jack Dodson, Hayden Shjulstad, Paige Olson, Bailey Culkins, Jacob Solie, Cendra Rondorf, Akayla Rondorf, Nick Solie, Sidney Olson and Matt Weiss.

Pictures continued on page five.

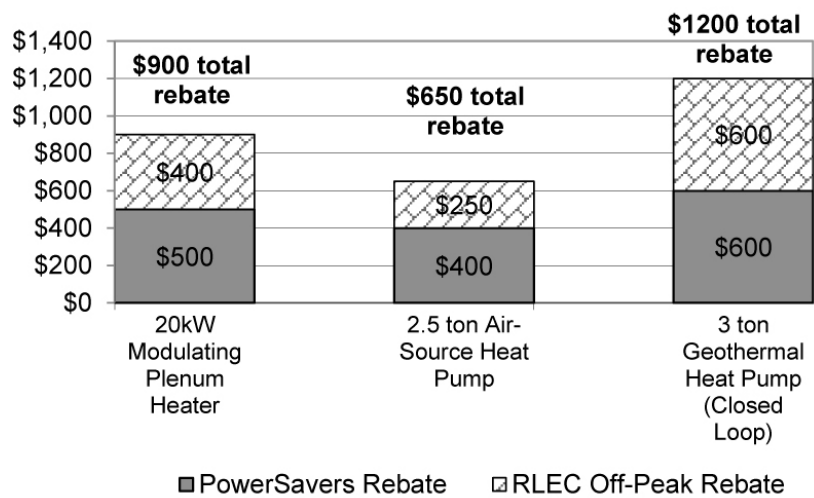
backup generators. When necessary, nearly 100 megawatts (MW) in the summer and 350 MW in the winter can be interrupted by Minnkota.

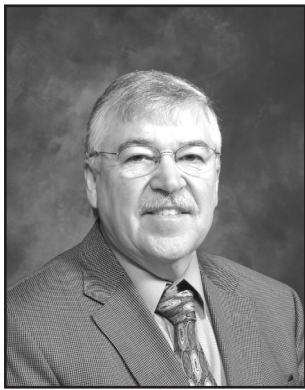
QUICK TAKES

A look at some statistics from your Red Lake Electric Cooperative

Red Lake Electric Cooperative promotes the use of electric heat by offering rebates to customers who install new equipment that are qualifying products. PowerSavers HVAC rebates are based per unit with the exception of the ground source heat pump rebate which is based per ton. Red Lake Electric's Off-Peak incentive will receive \$20 per kW on electric heating equipment, \$100 per ton on air-source heat pumps and \$200 per ton on ground source heat pumps. Call us today at 1-800-245-6068 or 218-253-2168 if you have any questions on how to qualify for rebates

Red Lake Electric Cooperative Rebates!





Manager's
Comments

by Roger Johanneck



Excessive straight-line winds cause damage to power lines, homes and property

The August 12 wind storm that blew through Red Lake Electric's service territory created problems and power outages for many. All toll, about 1,700 of Red Lake Electric member accounts experienced service interruption from this wind storm. The majority of damage occurred from West of Thief River Falls eastward to Goodridge and north towards Middle River.

Unfortunately, the damage toll was not limited to Red Lake Electric's power lines. Homes, barns, sheds and personal property were damaged from the excessive flat winds and fallen trees.

Service interruptions lasted about 27 hours total; starting Wednesday shortly before 5 P.M. and the last service was re-energized 7:45 P.M. on Thursday. Repair work continued for a few days on poles and other equipment that only got a temporary fix in order to get power flowing again. Electric system problems from storms like this have a way of surfacing again. Broken branches that remained harmless during the storm will sometimes later make their way on the power line and create a blink or possibly another outage.

All toll, 25 poles were broken by trees falling into them or by lightning strikes.

After events like this storm, as employees, we ask what we could have done better or different to help restore power quicker. What about equip-

ment and manpower; did we have the right tools and adequate staffing to do our work? Now that the recovery efforts are still fresh in our mind, it's a good time to assess what worked, what didn't and what can we do or change to improve upon the process we have in place for responding to major service interruptions. Overall, we think the restoration effort went well.

As members you might be asking yourselves what you could do differently, if anything, to avoid or minimize the inconvenience caused when the power goes out. Certainly having a backup generator goes a long way towards minimizing a power outage. What about trees? It is a good time to look around your property and consider the risk that trees may pose if you have them within striking distance of Red Lake Electric's power-line or your own service wires.

You might also question why Red Lake Electric doesn't just install more underground lines. Certainly having underground lines vs. overhead power lines would help avoid most of the tree and wind problems this storm created. While underground cable might seem like an attractive solution, it is not without a price. Underground construction is about twice as expensive as overhead construction. Underground construction has its benefits but it has a shorter life than overhead construc-

tion and is not immune to rodents, shovels, backhoes and whatever else we move earth with. It would be very expensive to make significant overhead power line replacements to our electric plant.

After the initial blow went through and the damage was done, our phones were busy. We appreciate the information members called in. Spotting problems on the line and making repairs after dark just takes longer to do than when crews are working during the day. You alerting us to problem areas such as where trees were on the line, wires down and poles broken went a long way in accelerating our restoration efforts.

We had all Red Lake Electric Employees help out in some way with this storm recovery effort. In addition to our crews, help from our neighboring electric cooperatives to the north were called upon to assist in our restoration efforts. Eight linemen, four each from P.K.M. Electric in Warren and Roseau Electric Cooperative in Roseau, equipped with bucket trucks and digger equipment, helped shorten the outage period significantly. I sincerely appreciate the extended work days our employees and invited help worked to get power restored. I was very pleased with their effort and I hope you were too.



Report from the Office

by Shirley Bregier

Auto pay/paperless promotion

Once again we are promoting our Auto Pay service with a drawing to win a \$100 credit on your electric bill. This drawing is held to thank our customers who already enjoy the convenience of Auto Pay as well as any new Auto Pay customers who are willing to give the service a try. RLEC is also promoting our paperless billing option. If you sign up for paperless billing or if you are already receiving your electric bill electronically, you will be entered in a drawing for a Kindle HD6. All you have to do to become eligible for either drawing is to be signed up for Auto Pay and/or paperless billing by October 30th. With Auto Pay you will continue to receive your electric statement by the 10th of each month. Your payment will automati-

cally be withdrawn from your bank account on the 25th of each month. It's simple and free. No check to write, no envelope to prepare, no postage to deal with. No matter where you are your electric bill will be paid. Sign up for paperless billing and you will be notified by email when your electric bill is ready for viewing on our secure payment web site, Bill4U. Once on this site you can make a payment, view your statements and check you daily usage. You can also download the free Bill4U app to your smartphone. There is a sign up for Auto Pay and promotion details in this issue of Volts & Jolts.

Unclaimed capital credits

In this issue of Volts & Jolts you will find a listing of past

members we have been unable to locate. We have a capital credit check for these members and need a current address to contact them. If you have (3529005.01 Centurylink Inc.) a current address for anyone on this listing please give us a call at 1-800-245-6068 or email their address to redlake@minnkota.com.

Sales tax

With fall just around the corner I want to remind you that residential heating is exempt from sales tax. If you haven't already sent us a sales tax exemption form please fill out the form below and mail or email it to our office. You can also obtain a form from our website www.redlakeelectric.com or by calling our office.

Have a safe harvest season.

ELECTRIC HEAT EXEMPTION

This is to certify that the primary source of heat for my residence is electricity and I am eligible for the electric heating sales tax exemption as provided by Minnesota State Law. The primary source is the source that supplies more heat than any other source for the largest period of time during the heating season.

Date _____ Account number _____

Social Security Number _____

Signature _____

Helping protect your home from electrical fires - Arc Fault Circuit Interrupters (AFCIs)

What Consumers Need to Know about AFCIs

What measures have you taken to secure your home—locks on the doors, security lighting, smoke and radon detectors? You can add to that security and help protect your home and family from electrical fires by installing arc fault circuit interrupters/breakers (AFCIs).

The U.S. Fire Administration reports that during a typical year, home electrical problems account for 28,600 fires and \$1.1 billion in property losses. They further note that December and January are the most dangerous months for electrical fires because of increased indoor activity—including lighting, heating, and appliance use. Arcing faults are among the major causes of these fires. AFCIs are designed to protect against fires caused by arcing faults in home electrical wiring.

Conditions that trigger arcing faults include:

- Damaged wires from nails driven into walls.
- Cracked insulation on wires due to aging or stress.
- Frayed wires at stress points.
- Loose or improper connections, faulty electrical equipment, and overheated electrical wires.

Safe Electricity urges consumers to consider adding AFCI protection to both new and existing homes to help prevent electrical fires, particularly older homes with standard circuit breakers, as arc faults can occur in aging wiring systems.

“Unwanted arcing can create high temperatures that can ignite walls and nearby combustible materials—such as wood and carpets,” explains electrical inspector Mike Ashenfelter, member of the Safe Electricity Advisory Board.

Standard circuit breakers do not protect against arcing conditions. They are designed to trip in response to a sus-

tained amount of heat. In contrast, an AFCI monitors current flow and can distinguish between normal, working arcs and unwanted, dangerous arcs. When an unwanted arcing condition is detected, it shuts down the circuit.

While both a Ground Fault Circuit Interrupter (GFCI) and an AFCI have a test button, each type of circuit interrupter serves a different purpose. GFCIs are designed to protect consumers against electrical shock, while AFCIs are designed to protect against electrical fires. AFCIs will not interfere with the operation of GFCI outlets.

The cost of installing AFCIs is directly related to the size of the house and the number of circuits installed. Each AFCI typically costs about \$30 to \$40. AFCIs provide an increased level of safety, and the cost increase is insignificant compared to the total cost of the home.

Ashenfelter advises, “If you are interested in making your home safer by installing AFCIs, contact a qualified electrician to do so.” The 2014 National Electrical Code requires combination AFCIs on circuits for all dwelling unit family rooms, dining rooms, living rooms, libraries, dens, bedrooms, sun rooms, recreation rooms, hallways, closets, finished basements, or other rooms of that nature.

It is important to note that AFCIs do not provide protection against all of the possible circuit faults that can cause fires, but they are a significant step forward in electrical fire safety.

Safe Electricity urges you to take steps to keep your home and loved ones safe from electrical fires. Learn more at SafeElectricity.org.

For more information and videos on electrical safety, visit www.SafeElectricity.org. Safe Electricity is a program of the

Energy Education Council, a non-profit organization dedicated to promoting electrical safety and energy efficiency, and supported by a coalition of hundreds of organizations, including electric utilities, educators and other entities

committed to promoting safe use of electricity.

EnergyEdCouncil.org
SafeElectricity.org
EfficiencyResource.org

Closed Labor Day

In observance of Labor Day, Red Lake Electric Cooperative's headquarters will be closed Monday, September 7.

In case of an electrical outage or emergency call the Cooperative's after-hour phone number 218-253-2200.

Have a safe, enjoyable Labor Day weekend. If your weekend activities take you outdoors, remember to look up for overhead power lines!

For all your Aerial Spraying Needs



OSE AIRSPRAY

Evan Ose, Owner/Operator

Office (218) 689-8098
330 Markley Ave. N. (218) 689-8088
Thief River Falls, MN 56701 oseairspray@mncable.net

TAGGART
CONTRACTING, INC.

NOW DOING
Paving • Seal Coating • Crack Sealing
Driveways • Parking Lots • Asphalt Streets
Commercial & Residential



Dozer Work • Laser Ditch Cleaning • Site Work & Basements
Aggregate Products of all Types

Troy Taggart
(218) 874-2380 • (218) 686-7908

Call Us for Your Asphalt Paving Needs
taggart59@hotmail.com

After-hours
outage phone
218-253-2200

NOTICE

Hidden within the text of the articles of this issue of the Volts & Jolts are the names and account numbers of some RLEC members. They will appear within the articles in parenthesis as such (9999999.99 Roger P. Member). If you find your name and account number, clip it out and send it with your next payment. You will be credited with \$5 on your electric bill.

ATTENTION

Red Lake County Small Business and Potential
Start-up Enterprises

The Red Lake County Economic Development Corporation can help you start your own business or expand an existing one. We are here to assist with a five-year loan for an amount up to \$15,000 at 4% APR. The business must be located in Red Lake County.

For more information contact Dave Ste. Marie 218-698-4279, Leo Olson 218-796-5656 / 218-280-9405 or Mike Spurgin 218-465-4648.



Red Lake Electric Cooperative, Inc.

One of the Minnkota Power Systems

RED LAKE ELECTRIC COOPERATIVE, Inc.

VOLTS & JOLTS

(USPS 663-400)

Published monthly by the Red Lake Electric Cooperative, Inc., 412 International Drive SW, Red Lake Falls, Minnesota 56750-0430, in the interest of its members and others. Periodical Postage Paid at the U. S. Post Office in Red Lake Falls, Minnesota 56750. POSTMASTER, SEND ADDRESS CHANGES to Volts & Jolts, c/o Red Lake Electric Cooperative, Inc., P. O. Box 430, Red Lake Falls, Minnesota 56750-0430. E-mail: redlake@minnkota.com

OFFICERS AND DIRECTORS

PRESIDENT Bonnie Christians
VICE PRESIDENT Randy Versdahl
SECRETARY-TREASURER Mark Hanson
DIRECTORS Kelly Lundeen,
Steven Linder, Peter Mosbeck,
Colette Kujava, Robert Finstad,
Stacy Blawat

Subscription Rate \$2.50 per year

From the Mail Bag

Dear RLEC,
Thank you.
**Eva Hurlburt
Kratka 4-H Club**

Dear RLEC,
Thank you very much for sponsoring the sheep herds-manship award and the sheep rate of gain award. For rate of gain my wether lamb's rate of gain was .79 pounds per day. I will be taking my wether down to state fair at the end of August. Your involvement in 4-H is greatly appreciated.

**Thanks again,
Kristin Farris
Highlanding 4-H Club**

Dear RLEC,
Thank you for the beef herds-manship award at the Pennington County Fair.

**Maddie Stewart
Happy Acres 4-H Club**

Dear RLEC,
Thank you for donating the cash award and trophy for the beef rate of gain at the 2015 Pennington County Fair. It is very generous and your sup-port to 4-H means alot.

**Thanks again,
Malena Rupprecht
Silverton 4-H Club**

Dear RLEC,
Thank you for the gift of money for awards.

**Hayden Shlustad
Clover Bud**

Dear RLEC,
Thank you for your dona-tion on my 4-H project at my county fair!

**Matt Weiss
Huot Hustlers 4-H Club**



Red Lake Electric Cooperative, Inc.

One of the Minnkota Power Systems

Things you should know about your electric service

BILLINGS AND COLLECTION

You will receive your energy bill on or near the 10th of each month. Payment of your monthly energy bill is due on the 10th of the month. You may pay your bill in person at RLEC during office hours, use the 24-hour drive-up drop box located next to the RLEC office, by Auto Pay, by mail or by Bill4U on www.redlakeelectric.com.

Payment must be in our office or in the mail as evidenced by the postmark on or by the 25th day of the month to avoid a late payment charge. A 1 1/2% monthly late payment charge will be computed on delinquent energy bills; the minimum late payment charge will be \$1.00.

If your payment is not received by the end of the month a notice of disconnection statement will be included in the message area on your following energy bill. The disconnection statement will give a final notice of when your electric service will be disconnected if the delinquent amount remains unpaid. If an employee is sent to disconnect your electric service a \$80 collection fee will be charged to your account, even if you pay the collector.

To have a disconnected service reconnected, all amounts owing including the \$80 reconnection fee and a security deposit must be paid. If the service must be reconnected after normal working hours a \$250 reconnection fee must be paid.

BAD CHECKS

A \$25 charge will be levied each time a check is returned because of nonsufficient funds, account being closed or payment stopped along with any applicable bank charges.

OUTAGES

In case your electricity goes out, please do the following:

- 1. Check your fuses or breakers at the yard pole or meter pedestal.
- 2. Call your neighbor to see if they are out of electricity also.
- 3. Call the RLEC office (218-253-2168 or 1-800-245-6068) during working hours or 218-253-2200 after hours.

METER TESTS

RLEC has a schedule in place to have its meters periodically tested for accuracy. Results from these tests show that meters generally slow down with age; however, if you think that your meter is recording too much usage, RLEC will test it for accuracy. You must pay a test fee of \$80 in advance of the test. If the meter test shows that the meter was inaccurate, the test fee will be refunded to you.

STOPPED METERS

If you find your meter has stopped and you are using electricity, please contact the office immediately so we can replace it. Average consumption will be billed to the member for the time the meter was stopped so there is no advantage in not reporting a stopped meter.

METER READINGS

An automated meter reading system is utilized to obtain monthly meter readings. Although the system is normally reliable, that is always a chance that the correct reading has not been transmitted to the office for billing. Customers should periodically read their meter and compare it to the reading on the billing statement. If the actual reading is not close to the billing statement reading, please call the office. Please keep in mind that the reading on your bill is from the end of the month.

GENERAL SERVICE RATES

Facilities charge variable \$27 to \$35 month
April-December 9.5¢ Kwh
January-March 9.9¢ Kwh
Long term off peak 5.5¢
Short term off peak 7.5¢
Off-peak equipment charge, \$5.50/month per heat meter.
Multiphase users add \$22/month cost of service charge.
Standby, \$12/month (meter disconnected but the power line remains; standby is not available on services larger than 15 KVA transformer capacity).
Security light: LED, \$8/month; High pressure sodium, \$8/month; mercury vapor, \$9/month; water heater flat credit, \$7/month (January-April billing).

Recipe Corner



Fried Zucchini

Ingredients:
•1-2 Zucchini
•2-3 cups milk
•Panko Bread Crumbs
{Next to Shake n Bake at Grocery Store or you can use regular bread crumbs}
•3 cups flour
•oil
Directions: Heat oil to medium heat. Slice zucchini into several circles. Throw 10-15 slices of zucchini into a bowl of milk. From there add slices to a gallon bag filled with the flour. Shake around. Put slices back into the milk and make sure it gets all wet again. Add slices to a gallon bag filled with Panko crumbs. Shake around. Fry until golden brown. Repeat process until all the slices are breaded and fried.

Lemony Raspberry Zucchini Bread with a Lemony Glaze makes a 9" loaf

Ingredients:
For the Bread:
•2 cups unbleached all-purpose flour
•2 teaspoon baking powder
•1/2 tsp salt
•2 eggs
•1/2 cup vegetable oil
•2/3 cup sugar
•1/2 cup milk
•1/4 cup fresh lemon juice
•Zest of 1 lemon
•1 cup grated zucchini
•1 cup of raspberries
For the Glaze:
•1 cup powdered sugar
•2 Tablespoons fresh lemon juice
Directions: Preheat oven to 350 °F. Grease and flour a 9x5" loaf pan, set aside. In large bowl, blend flour, baking powder, and salt. In the mixer bowl of a stand mixer/medium-sized bowl, beat 2 eggs well. Then add oil and sugar, and beat on low until well combined. Add the milk, lemon juice, and lemon zest; blend everything well. Gently mix in the zucchini until just evenly distributed in mixture. Add dry ingredients and fold everything together, but don't over mix. Fold in the raspberries. Pour the batter into the loaf pan. Bake for 45 minutes or until toothpick inserted in center comes out clean. Cool in pan 10

minutes then remove to a wire rack and cool completely. While the loaf is cooling, in small bowl, mix the powdered sugar and lemon juice until well blended. Spoon the glaze over the cooled loaf. Let the glaze set prior to slicing and serving.

Cucumbers in cream

Ingredients:
•2 or 3 cucumbers, peeled and sliced
•1 medium onion, sliced thinly, and separated into rings, or green onions
•1 cup sour cream
•1/4 cup cider vinegar
•1/4 cup sugar
•1/4 tsp. salt
•1/4 tsp. pepper, or more to taste
•1/4-1/2 tsp. dill weed, if desired

Directions: Layer cucumbers and onion in bowl. Mix sour cream, vinegar, sugar, salt, pepper and dill weed in a small bowl. Pour over cucumbers and onions. Stir to combine. Refrigerate until ready to serve. Stir a few times before serving to marinate cucumbers.

S'mores Krispie Treats

Ingredients:
•3 TBS unsalted butter
•pinch of salt
•5 cups mini marshmallows, divided
•6 - 7 cups Graham cereal pieces
•3 - 1.55 oz. Hershey's® Milk chocolate bars, broken into pips
Directions: Spray a 9" x 13" pan with cooking spray. In a large stock pot, melt the butter and salt over medium heat. Once it is melted, add 4 cups of the mini marshmallows and stir until they are completely melted. Take mixture off heat and add in the cereal and stir. Add in the extra cup of mini marshmallows and stir to just combine. Working quickly, pour half the mixture into the prepared pan and press down then top with half the Hershey's pips. Pour the rest of the mixture onto the chocolate and press down then top with the rest of the chocolate. Allow to sit at room temperature for several hours to set up OR place in

refrigerator for about an hour. Remove from pan and cut into bars.

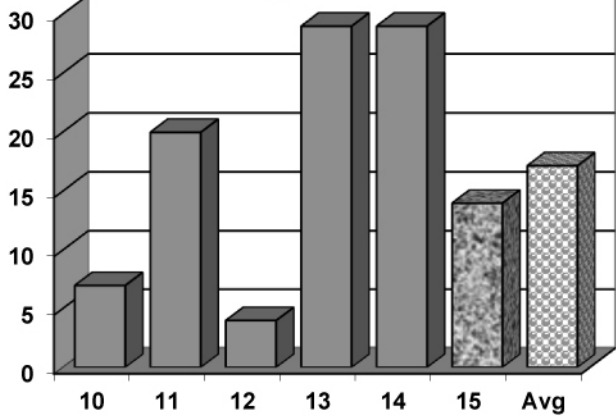
Chicken Fajita Pasta

Ingredients:
•2 tablespoons olive oil
•1 pound boneless, skinless chicken breasts
•1 envelope (3 tablespoons) taco or fajita seasoning
•2 cups diced onion (about 1 whole onion)
•2 cups diced bell peppers (2-3 bell peppers)
•3-4 cloves garlic, minced
•2 cups low-sodium chicken broth
•1/2 cup heavy cream
•1 (10-oz) can Ro-Tel Diced Tomatoes and Green Chiles
•8 oz (about 3 cups) penne pasta
•1/2 teaspoon salt
Directions: Cut the chicken into bite-sized pieces. Season with half of taco seasoning. In a 12-inch skillet, heat 1 tablespoon olive oil over high heat. When the oil is very hot, carefully add the chicken in a single layer and cook without stirring until one side is seared and browned, about 1-2 minutes. Flip the chicken to the other side and cook until browned. Remove the chicken to a plate and set aside. Add the remaining 1 tablespoon of olive oil to the skillet with the heat still on high. When the oil is very hot again, add the onions, bell peppers, and remaining taco seasoning. Cook, stirring occasionally, until the veggies are slightly blackened. Turn heat to low, add minced garlic, and stir (3736022.10 Roger & Susan Finger) until fragrant and well combined, about 30 seconds. Remove the veggies to the plate with the chicken. In the same skillet, add the broth, cream, diced tomatoes, uncooked pasta, and salt. Stir to combine and bring to a boil, then cover, reduce heat to medium-low, and cook for 15 minutes until pasta is tender and liquid is mostly absorbed. Add the chicken and veggies back into the skillet and stir to combine until heated through, about 2 minutes. Serve with buttery garlic bread.

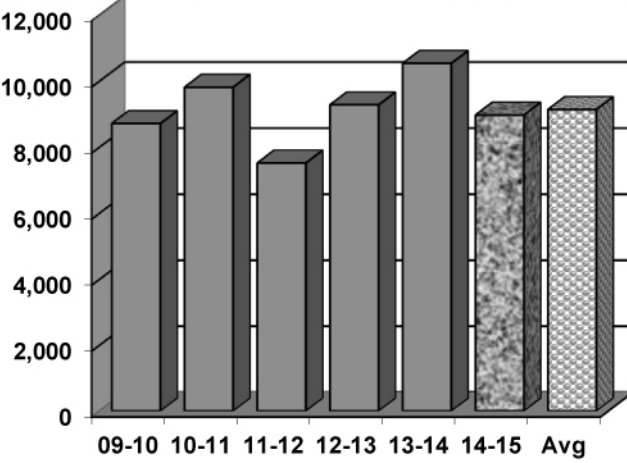
DEGREE DAYS

To determine degree days, you must calculate the daily mean temperature for the time period you are measuring. Degree day computation is based on the assumption that a building does not require any heat if the outside temperature averages 65 degrees during a 24-hour period. To obtain a degree day figure, the high temperature and the low temperature for the day are added and the total divided by two. That figure is then subtracted from 65. For example, if the high temperature was 30 degrees and the low temperature 10 degrees, the figure would be 30+10=40; 40/2=20; 65-20=45. This would be a 45 degree day. The higher the degree day figure, the more heat required to warm your home.

DEGREE DAYS July, 2015



Year To Date September 1 to July 31



ENERGY STAR

Look for the logo

The ENERGY STAR logo is on all qualified products that meet specific standards for energy efficiency.

ENERGY STAR-qualified products exceed the federal minimum standards for efficiency and quality—sometimes significantly.

Look for the label on appliances, electronics, water heaters, windows, and other products that consume energy in your home.



STOP BY AND REGISTER TO A WIN A FREE BACKPACK!

405 Bridge St NE, Red Lake Falls
OPEN: Everyday 5:30 a.m. - 11 p.m. **253-2995**

RED LAKE ELECTRIC COOPERATIVE INC. OPERATING REPORT

MONTHLY COMPARISON		
	June 2014	June 2015
Total Revenue	653,797	\$547,196
Total Margins	(279,394)	(\$99,154)
Cost of Power	702,318	\$700,473
KWH's Purchased	7,819,271	7,540,485
Capital Credits Paid to Estates	3,998	\$6,037
Average outage time in minutes per member	3	2.8

YEAR TO DATE COMPARISON		
	June 2014	June 2015
Total Revenue	\$7,997,305	\$6,872,508
Total Margins	\$1,130,167	\$435,994
Cost of Power	\$5,374,017	\$5,211,864
KWH's Purchased	78,422,602	70,833,516
New Service Connections	11	12
Customers Served	5,270	5,335
Capital Credits Paid to Estates	\$30,453	\$31,555
Average outage time in minutes per member	37	28.6
Miles of Line - Over Head	2,323	2,327
Miles of Line - Underground	264	270



Air Conditioning & Heating

REFRESHINGLY AFFORDABLE AIR CONDITIONING

Don't risk paying too much to keep your home comfortable. Compare quality construction, warranty protection*, and the price of any Goodman® brand Air Conditioner. Then you'll discover why millions are saying, "Thank goodness for Goodman."



BILL J. MOSER
MASTER PLUMBER
CFR 089400285
PM061208

BILL H. MOSER
MASTER PLUMBER
PM058011

Thank goodness for Goodman®

Farmers Union Oil Company

Thief River Falls

218-681-3512



- Fertilizer
- Petroleum products
- Town and country deliveries
- Tires, batteries, accessories
- Farm supplies

WILCOX PLUMBING AND HEATING, Inc.

RED LAKE FALLS

Plumbing/Heating/Air conditioning

BILL H. MOSER, Master Plumber
License No. 1770PM

BILL J. MOSER, Master Plumber
License No. 6039PM



- In-floor heating
- Oil furnaces
- Pressure systems
- Gas furnaces
- Electric heat pumps

FREE ESTIMATES
COMPLETE SALES
AND SERVICE

218-253-4347

**Advertise
here for just
\$30/month!**

**Call
218-253-2594
to inquire**

Security STATE BANK



- Operating loans
- Vehicle loans
- Farm real estate loans
- Consumer loans

"We appreciate your business."

218-796-5157

Fax 218-796-5158

anthony.holthusen@ssboklee.com



**Advertise
here for just
\$30/month!**

**Call
218-253-2594
to inquire**

VOLTS AND JOLTS FEATURE OF THE MONTH

The Maijala Century Farm



A large, tall barn, 82 feet long, was built in 1919. The foundation and lower walls are made of native rock. The front of the barn reads, Maijala 1919.

by Evelyn Glass

Four and a half miles east of Middle River in Spruce Valley Township, Marshall County, Minnesota, lies the Harold Maijala Century Farm. The area has a history of having many settlers who arrived from Finland and settled in that township. Harold's Grandfather Solomon and Grandmother Rina moved onto the farm in 1911. Traditions that had their roots in Finland came with them. One was the celebration of St. Uro. Held in March it honored the mythical character of St. Uro who drove the grasshoppers out of the land of Finland and saved their crops. During the festival a local person was always crowned as St Urho and "ruled" over the festivities. This was a celebration that was observed by the community for several years until it eventually was discontinued.

Another Finnish tradition, which promoted good health, was having a sauna or steam bath on each farm. Saunas were used for bathing and stimulating the bather to experience complete physical and mental (4317006.07 Michael J. Srsnsky) relaxation. Like other traditions, the practice of having a steam bath followed by a dip in a cold pool or snow, has become rare. Harold said he no longer has a sauna on his farm.

The Maijala farm consists of 650 acres. Beef cows, small grains, and hay are grown on the farm along with some acres in the CRP and Preventive Planting programs. Milk cows were once an important part of the farm. The cows were

always milked by hand and the milk was hauled to Middle River in cans. In the 50s and 60s they transitioned to beef cattle.

A large, tall barn, 82 feet long, was built in 1919. The foundation and lower walls are made of native rock. As was typical of barns of that era it has a large hay mow and a large door that was let down so hay could be put into the mow. The hay was put into slings and using a series of pulleys the hay was pulled up into the barn by a tractor. Today the hay is baled in large bales and is not stored in the mow.

Harold's Grandparents, Solomon and Rina had eleven children, five girls and six boys. The original house was very small in the beginning, with additions added through the years to make room for their growing family. Solomon passed away in 1928 and Rina in 1975. At that time their son Bill and his brother Tom assumed ownership of the farm. A new house was built in 1956 by Bill and his wife, Berniece (Arnedes). The old house still stands to remind the family of the early years.

Bill and Berniece's son, Harold is the third generation to farm the land. He was born in 1957 at the hospital in Karlstad as was his sister, Susan, who is now retired and lives in Hovland, MN. (She has spent the years of her career working for a group of attorneys in Grand Marais, MN.) Harold operates the farm now after the death of his dad, Bill, in 1995 and his mother, Berniece, in 2009.

Harold's school years were

spent in the Middle River Public School during grades 1-8 and in the Greenbush Public School during his high school years. Basketball was his chosen sport. Today, he enjoys hunting deer in the fall.

Harold's dog, "Moe", keeps watch over the farm accompanied by a newcomer to the farm, a cat, yet to be named. She arrived in mid-June looking for a home after someone dropped her off along the road.

When asked how the Red Lake Electric had made his life better, Harold emphasized the good service provided by the Red Lake Electric. He added because he has the convenience of electricity many facets of living on his farm are made easier.



Howard Person from the Marshall County Extension office presented the century farm certificate to Harold Maijala on Friday, July 24 at the Marshall County Fair located in Warren, MN.



In this house, Solomon and Rina Maijala raised eleven children. The house is still standing to day to remind the family of the early years. Harold recently painted the house and replaced the shingles with steel. (4616003.15 Kirk Hibbert)



The Maijala farm is located in Spruce Valley Township of Marshall County, Middle River Minnesota. The land was purchased in 1911 from L.E. Jones and the State of Minnesota by Rina Maijala to include 240 acres. The major crops of the farm were oats, barley, and hay. Rina passed the farm to Tom and William Maijala and then onto Harold Maijala.

Bray-Gentilly Mutual Insurance Co.

Locally Owned and Operated
Serving Policyholders Since 1900

218-683-3200

2017 Hwy. 59 SE • P.O. Box 592
Thief River Falls, MN 56701

**INSURANCE FOR
FARMS, HOMES
AND PERSONAL
PROPERTY**

TELEPHONE US FOR AN
AGENT NEAR YOU!

**Advertise
here for just
\$30/month!**

**Call
218-253-2594
to inquire**

Kilen's Custom Cleaners

**Commercial
Residential
Custodial**



Specializing in
Water, Fire & Soot Restoration

Jordan Kilen - Owner
(218) 686-2591
www.kilencustom.com

Free Estimates

"Achieving excellence one
customer at a time"

Want to cut your heating cost by up to 50%?

Buy a YORK Affinity
heat pump today!



GROVE MECHANICAL, INC.

Your hometown heating &
air conditioning team!
Serving Crookston and the surrounding
communities for 30 years.
(218) 281-3863

OFFICE PHONE
253-2168

OUTAGE PHONE
253-2200

1-800-245-6068

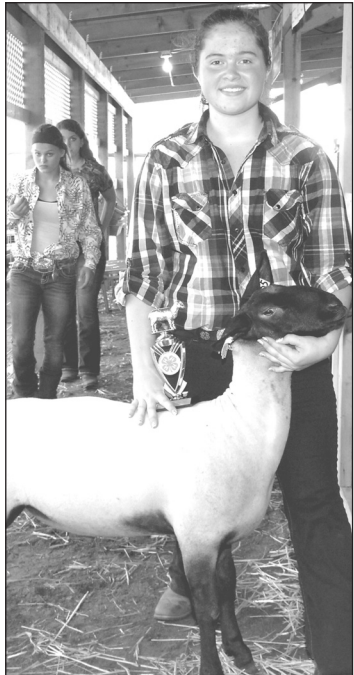


**Red Lake Electric
Cooperative, Inc.**

One of the Minnkota Power Systems



Happy Go Lucky 4-H member Sara Quick received two awards from Red Lake Electric Cooperative at the 2015 Red Lake County Fair for her horse project and veterinary sciences. Photo courtesy of Oklee Herald



Kristin Farris of the Highlanding 4-H Club won the senior showmanship award and the Rate of Gain award with her sheep at the 2015 Pennington County Fair. The award was sponsored by Red Lake Electric Cooperative. Photo courtesy of Thief River Falls Times



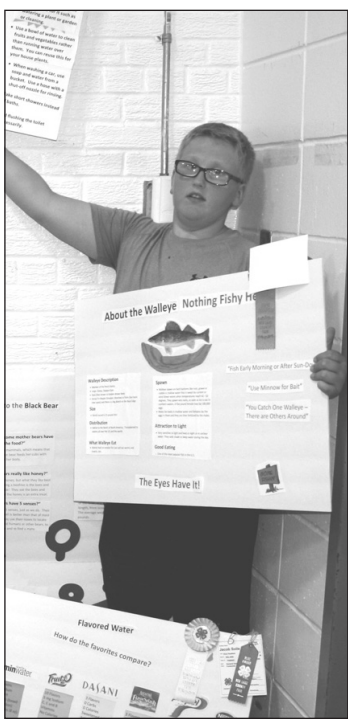
Ty Lunke from the New Maine 4-H Club was the Jr. Showmanship Champion in the Swine Division at the Marshall County Fair which was held July 22-26, 2015. Ty's parents are Brad and Sara Lunke of rural Thief River Falls. The award was sponsored by Red Lake Electric Cooperative. Photo courtesy of Marshall County Extension



Malena Rupprecht of the Silverton 4-H Club won the senior showmanship award and the Rate of Gain award in the beef division. The rate of gain was 3.4 pounds per day. The award was sponsored by Red Lake Electric Cooperative. Photo courtesy of Thief River Falls Times



Winning the champion ewe award at the 2015 Pennington County Fair was Kale Geiser of the Steiner 4-H Club. The award was sponsored by Red Lake Electric Cooperative. Photo courtesy of Thief River Falls Times



Jacob Solie of the Huot Hustlers 4-H Club received awards (2029002.08 Paul McKibben & Jodi Kessler) sponsored by Red Lake Electric Cooperative at the Red Lake County Fair for his computer project, robotics and exploring animals. Not pictured and receiving an award from Red Lake Electric at the Red Lake County Fair was Justin Solie for exploring animals and Daniel Culkins for robotics. Photo courtesy of Oklee Herald

Great new incentives are available for upgrading your fluorescent lighting system

What type of lighting system are you using?

Inefficient T12

Energy efficient T8

How much is your lighting system costing you?

Lighting systems come in all shapes and sizes, and each component of the system provides energy-saving potential.

Inefficient systems, such as T12 fixtures, use up to 40% more energy than newer, more efficient models.

Type of Fixture	All day, Every day	50 Hours per Week	Level of Energy Efficiency
T12 (1½" dia.), 2 bulb	\$61	\$18	Not Efficient
T8 (1" dia.), 2 bulb	\$49	\$15	Good
High Performance T8, 2 bulb	\$44	\$13	More Efficient
Low-watt T8, 2 bulb	\$43	\$13	More Efficient
T8 LED, 2 bulb	\$35	\$10	More Efficient

Energy calculations are based on \$0.10/kWh average cost.

Call us today to learn about incentives for upgrading your lighting system to high-performance T8 fixtures!

Power SAVERS

RESIDENTIAL Rebates

Residential Prescriptive Program
This program is designed to provide end-use consumers with a quick and easy way to choose high-efficiency equipment at the time of normal equipment replacement or major renovations. Some of these technologies include:

Lighting (Must be ENERGY STAR® or DesignLights Consortium™ approved.)		
ENERGY STAR CFL Lamps		\$2/bulb <i>Max. 12 per customer</i>
ENERGY STAR LED Screw-In Bulb	In place of 40-60W incandescent.	\$4/bulb
ENERGY STAR LED Screw-In Bulb	In place of 65W or greater incandescent.	\$8/bulb
<i>Maximum of 12 per customer for LED screw-in bulbs.</i>		
ENERGY STAR LED Recessed Downlights	Complete fixtures or replacements kits.	\$8/unit
LED Outdoor Fixtures	LED fixture Wattage of <40 Watts. Must operate on a photocell and be DesignLights Consortium approved.	\$40/fixture
LED Outdoor Fixtures	LED fixture Wattage of >40 Watts. Must operate on a photocell and be DesignLights Consortium approved.	\$80/fixture
Appliances (Must be ENERGY STAR approved.)		
ENERGY STAR Refrigerator		\$25/unit
ENERGY STAR Refrigerator (with recycling of old refrigerator)		\$50/unit
ENERGY STAR Freezer		\$25/unit
ENERGY STAR Freezer (with recycling of old freezer)		\$50/unit
ENERGY STAR Clothes Washer		\$50/unit
ENERGY STAR Clothes Dryer		\$50/unit
Electric Water Heater	Minimum 80-gallon total capacity, EF ≥ 0.91. Must be controlled under the utility's load management program.	\$150/unit
Engine Block Heater Timer		\$10/unit
Heating, Ventilation Air Conditioning (HVAC) Measures		
Tune-Up for Residential Central A/C	Not valid on window units	\$25/unit
Tune-Up for Residential Air-Source Heat Pumps (ASHP)	Excludes mini-split ductless ASHPs	\$25/unit
ASHP	ENERGY STAR or 14.0 SEER / 8.2 HSPF	\$400/unit
Supplemental Heating Source for ASHP	Must modulate to allow ENERGY STAR-rated ASHP to operate down to 5°F, and be on load control	\$500/unit
Furnace (Air Handler) with ECM Blower	Furnace with ECM blower	\$150/unit
Mini-Split/Ductless ASHP	15 SEER	\$500/unit
Programmable Thermostat		\$25/unit

Power SAVERS

RESIDENTIAL Rebates

Geothermal Measures		
Ground-Source Heat Pump Open Loop <135,000 BTUH @ 59°F	16.2 EER /3.6 COP	\$200/ton <i>Max. incentive \$2,500 home</i>
Ground-Source Heat Pump Closed Loop <135,000 BTUH @ 77°F	14.1 EER /3.3 COP	\$400/ton <i>Max. incentive \$5,000 home</i>
<i>New installations only. Must be installed by a qualified, insured contractor. Must be the primary heating source for the home and be on a list of prequalified units. Water-to-water systems need the manufacturer's specifications indicating the equipment meets incentive requirements.</i>		
Replacement Geothermal		
Ground-Source Heat Pump Open Loop <135,000 BTUH @ 59°F	16.2 EER /3.6 COP	\$100/ton <i>Max. incentive \$1,250 home</i>
Ground-Source Heat Pump Closed Loop <135,000 BTUH @ 77°F	14.1 EER /3.3 COP	\$200/ton <i>Max. incentive \$2,500 home</i>
<i>Incentive available for failed geothermal equipment only. Entire indoor unit replacement is required to receive incentive. Replacing only the compressor will not qualify for the incentive. Equipment being replaced must fall outside of any warranty period to receive incentive. Invoice showing proof of purchase must be attached.</i>		

Energy Efficiency Tip of the Month

Periodically inspect your dryer vent to ensure it is not blocked. This will save energy and may prevent a fire. Manufacturers recommend using a rigid venting material - not plastic vents that may collapse and cause blockages.

Source: energy.gov

Safe. Sound. Secure.® Since 1916

Save money with Auto-Owners Insurance Multi-Policy Discounts!

Call or visit us today!

Red Lake County Insurance

Red Lake Falls, MN

218-253-2177 • rlc@gvtel.com

www.redlakecountyinsurance.com

Auto-Owners Insurance

12958 (7-13)

LOOK UP

POWER LINES MAY BE OVERHEAD

Minnesota State Electrical Inspectors

Pennington and Marshall Counties:
Scott Stenvik – 218-686-5406

Red Lake and Polk Counties:
Brian Holmes – 218-686-1413

Any time you or an electrician does wiring or other electrical work at your home or farm, Minnesota state requires a state wiring inspector to conduct a proper inspection of the work. A rough-in inspection must be made before any wiring is covered. A final inspection is also required. Please visit www.electricity.state.mn.us for more information. The inspectors can be reached weekday mornings between 7:00 a.m. and 8:30 a.m.

Adding grain storage? Call us first.

Constructing a grain bin too close to an electric power line is not only hazardous, but it's a violation of the National Electrical Safety Code (NESC). This regulation lists specific minimum distances that must be maintained (both horizontal and vertical clearances) between the bin and any utility-owned overhead lines.

A bin constructed too close to a power line may need to be moved, or the

power line must be rerouted. Correcting a Code violation is expensive for the property owner and the power supplier.

The clearances mandated by the NESC apply to bins that were (4419002.05 Collin Mooney) constructed or expanded after August

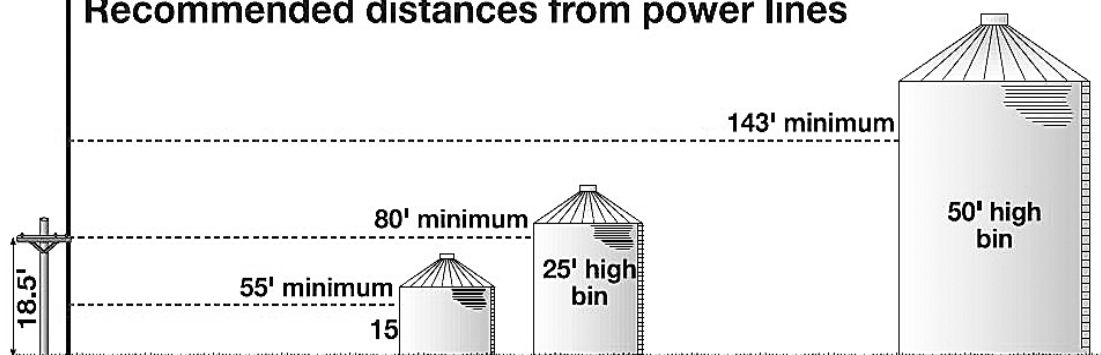
1989. We encourage anyone who thinks they have a violation, or is planning to build a bin to contact Red Lake Electric Cooperative Line Department. Call Steve Conely at 253-2168 or 800-245-6068.



Red Lake Electric Cooperative, Inc.

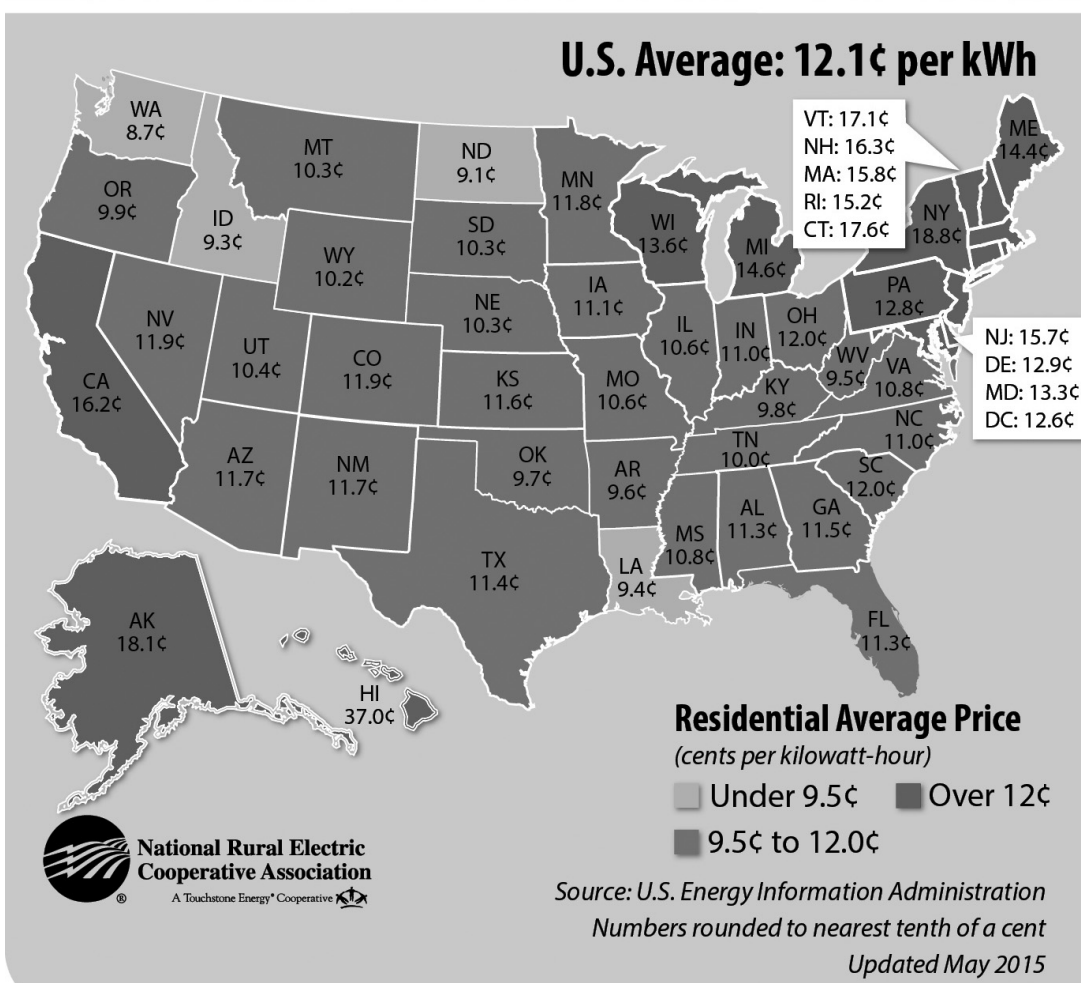
One of the Minnkota Power Systems

Recommended distances from power lines



Average Prices for Residential Electricity

2015 figures, in cents per kWh



5 Heating Options

TO CONSIDER WHEN PLANNING A NEW OR RETROFIT HEATING SYSTEM

Electric plenum heat

Plenum heaters are an economical choice that work well as a retrofit option for off-peak in a fossil fuel furnace. They fit in the plenum (where the furnace ends and ductwork begins). This allows the member to use the most cost-effective heating source at any time. A \$20 per kW rebate is available (maximum of \$600).



Electric cable or hydronic floor heat

Floor heat is a popular option for off-peak due to its comfort. The key is to install the proper heat storage base with sand and slab with complete perimeter insulation. A \$20 per kW rebate is available (maximum of \$600).



Air-source heat pump with modulating plenum heater

Air-source heat pumps transfer heat instead of creating it. ASHPs are very efficient depending on the outside temperature and work just like a central air conditioner in the summer. They are a good off-peak choice because you get very efficient heat until the temperature drops to between 20 and 30 degrees Fahrenheit. Then the modulating plenum heater kicks in and works with the heat pump for extra



savings. Energy efficiency rebates of up to \$1,050 are available as well as a separate \$20 per kW rebate for the plenum heater and \$100 per ton rebate for the heat pump (maximum of \$600).

Geothermal heat pumps

Ground-source heat pumps provide the highest efficiencies for space heating and cooling available today. Geothermal heat pumps use the constant temperature of the earth to transfer heat. Energy efficiency rebates up to \$400 per ton are available as well as a separate rebate of \$200 per ton (maximum of \$600). Criteria does apply, including placement of any strip heat on load control. Federal tax credits are also available for qualifying installations.



Steffes thermal storage with air-source heat pump

A Steffes electric thermal storage system is a stand-alone off-peak heating system that eliminates the need for fossil fuel backup when sized properly. Coupled with an air-source heat pump, a Steffes system



will deliver great energy savings and high efficiency. Steffes systems convert electricity into heat and store that heat in specially designed bricks. Because of its large heat storage capacity, it can provide comfort 24 hours per day. Energy efficiency rebates of up to \$1,050 are available for select units as well as a separate \$20 per kW rebate (maximum of \$600).



GOPHER STATE



ONE CALL

Call before digging!
It's the law!

1-800-252-1166

Is your home protected from a **LIGHTNING STRIKE**?

We have available a meter base **SURGE SUPPRESSOR** to protect your entire home for:

\$3.95 / month

Call our office for more details!

Red Lake Electric Cooperative, Inc.
Delivering Powerful Value every day

LOOK UP

POWER LINES MAY
BE OVERHEAD



Touchdowns don't light up the scoreboard.
Electricity does.

Three months of practice. Two weeks of hype. One big game. Talk about pressure. Not just on the players, but on your local electric cooperative. The Friday night lights, scoreboard and sound systems all require reliable electricity. The star of your hometown team shines with the powerful value delivered by Red Lake Electric Cooperative – each and every day.



Red Lake Electric Cooperative, Inc.

One of the Minnkota Power Systems

Phone 218-253-2168
Toll-free 1-800-245-6068
Fax 218-253-2630
After-hour outage 218-253-2200
Office hours Monday-Friday, 8:00-4:30
E-mail: redlake@minnkota.com
Web site www.redlakeelectric.com



Call Before You Dig - Gopher State One Call • 1-800-252-1166

P. O. Box 430 • 412 International Drive SW • Red Lake Falls, MN 56750-0430



Red Lake Electric Cooperative Inc.

218-253-2168 or 1-800-245-6068 • www.redlakeelectric.com

Informational Web Sites

The following is a list of Web sites that can provide information and education in reference to electrical safety and energy conservation. These Web sites are listed as links on Red Lake Electric Cooperative's Web site at www.redlakeelectric.com.

- Electrical Safety Foundation International: www.esfi.org
- Alliance to Save Energy: www.ase.org
- US Environmental Protection Agency: www.epa.gov/greenhomes
- Energy Star: www.energystar.gov
- Minnesota Safety Council: www.minnesotasafetycouncil.org
- Safe Electricity: www.safeelectricity.org
- Lighting Controls Association: www.aboutlightingcontrols.org
- US Consumer Product Safety Commission: www.cpsc.gov

RED LAKE ELECTRIC TRUST
Post Office Box 430
Red Lake Falls, MN 56750

OPERATION “ROUND UP®” GRANT APPLICATION FORM

1. Name of Organization: _____

2. Date Organized: _____

3. Address: _____

Street or Post Office Box

City or TownStateZip Code

4. Contact Person: _____

NameTitle

5. Phone Number: _____

WorkHome

6. What is the mission or purpose of your organization; i.e. what kind of services do you provide? _____

7. Is organization requesting funding exempt from payment of income tax under 501 (c)3 of the Internal Revenue Code?
Yes _____ No _____

8. A copy of financial statement(s) for most previous year should be provided. If not available attach a statement detailing revenue, sources of revenue, program expenditures, administrative expenses and cash/ assets on hand.

9. Approximate number of individuals, families or groups served in the Red Lake Electric Cooperative Cooperative service area of Pennington, Red Lake, Marshall (east half), and Polk (Parnell, Crookston, Fairfax, Kertsonville, Tilden, Grove Park, Badger, and Chester Townships).
Individuals _____
Families _____
Groups _____

10. Does agency serve outside of the Red Lake Electric Cooperative service area as defined in #7?
Yes _____ No _____

Yes, please provide information on number served and location.

11. State Purpose of Organizations/Agency Request: (include amount requested and specifics of how funds will be used.

12. List other sources of funding for use of request as described in the above:

The information contained in this statement is for the purpose of obtaining funding from the Red Lake Electric Trust on behalf of the undersigned. Each undersigned understands that the information provided herein is used to determine funding, and each undersigned represents and warrants that the information provided is true and complete and that the Red Lake Electric Trust may consider his statement as continuing to be true and correct until a written notice of a change is provided. The Red Lake Electric Trust is authorized to make all inquiries they deem necessary to verify the accuracy of the statements made herein.

NAME OF ORGANIZATION

SIGNATURE OF REPRESENTATIVE

DATE

HILLCREST
SENIOR
LIVING



**An Assisted Living Community
Where Your Independence Can Thrive**

Located in a scenic neighborhood setting, Hillcrest Senior Living offers an inspiring and compassionate lifestyle that enhances and uplifts the lives of our residents. Our team of dedicated and trained caregivers nurture a feeling of family. We deliver assisted living with all of the comforts of home yet with the added benefits of personal care services.

Call today for a tour!
(218) 253-2157

Hillcrest Senior Living
311 Broadway Ave NE
Red Lake Falls, MN 56750
www.hillcrestrlf.com



After-hours
outage phone
218-253-2200


TRANSYSTEMS




**Now Hiring
CDL Class A Drivers**
\$2,000 Early Sign On Bonus

Touch Free, Local Haul
Hiring through the Red River Valley including
Drayton, ND, Crookston, MN and East Grand Forks,
MN
Home Every Shift

Apply online at www.transystemslc.com




AT VALLEY, SERVICE ISN'T
“BOLTED ON.” IT’S BUILT IN.



Carrington: 701.793.3871
West Fargo: 701.281.9418

VALLEY
PERFORMANCE
PLUS DEALER


valleyirrigation.com

Win \$100 or Kindle HD6

Sign up for Auto Pay & Paperless billing today!

- Sign up to pay your electric bill with Auto Pay and your name will be entered into a drawing for \$100.
- Sign up for paperless billing & your name will be entered in a drawing for a Kindle HD6.
- Both drawings will be held October 30, 2015.
- If you are already enrolled in these programs your name will be automatically entered.



Sign up is simple. Go to www.redlakeelectric.com & click on . Sign in or set up an account. You can either make a payment on the day of your choice or click on the set up automatic payments to sign up for Auto pay (or use the form below) and/or sign up for paperless billing. Auto pay will withdraw the amount of your electric bill on the 25th of each month. If you already are an auto pay customer then set up an account in Bill4U and sign up for paperless billing. You will receive an email each month when your bill is ready. You will then be able to sign in to Bill4U and see your statement. We also have a free app for your smartphone so you can access your statement wherever you are.

Any questions call 800-245-6068 or email redlake@minnkota.com.

Red Lake Electric Cooperative Auto-Pay Sign-up Sheet

I authorize Red Lake Electric Cooperative (R.L.E.C.) and the bank listed below to initiate variable entries to my checking or savings account. This authorization remains in effect until I notify R.L.E.C. in writing to cancel it in such time as to allow R.L.E.C. to act on it.

Name (Print)_____

R.L.E.C. Account#_____

Bank Name _____

Checking or Savings account # _____

Sign here to authorize _____

Please return this sign-up form with a blank voided check to Red Lake Electric Cooperative, Inc.



Red Lake Electric
Cooperative, Inc.

One of the Minnkota Power Systems

P.O. Box 430 • Red Lake Falls, MN 56750

Phone: 218-253-2168 • Toll Free: 800-245-6068

After hours # 218-253-2200

Can you help us locate any of the following?

The following people have capital credit refunds due them. Checks mailed to their last-known address have been returned by the Postal Service. If you can provide a current address for someone who is listed or the name and address of an heir if they are deceased, call or write Red Lake Electric Cooperative, PO Box 430, Red Lake Falls, MN 56750; 218-253-2168 or 800-245-6068.

ABRAHAMSON, JOHN W. AKSET, BRIAN ANDERSON, JASON A. ANDERSON, LOWELL W. ANDERSON, ODESSA ANDERSON, W. S. AUBOL, LISA & JASON BARNETT, GARRY A. BAUER, DARREL A. BEITO, PAUL E. BELLANGER, DEL & TAMMY BELLANGER, DELALLEN BENEDICT PROPERTIES INVES BERGERSON, MELVYN BUCKLEY, PHIL E. BURKEL, RANDY CARLSON, DALE CARTER, ROBERT G. M.D. CHAVOYA, GARY M. CITI CORP MORTGAGE CLAUTHIER, CHERYL L. COLBERT, MARY COLDWELL BANKER CONDOR-MOSER, FRED &LINDA COULSON, CURTIS D & J FARMS DALRYMPLE, KARRI M. DEAN, JOEY DEPT OF HUD DINKOWITZ, HARRIET DONARSKI, FRANCES DONARSKI, LEO DUDLEY, PATRICK A. DURHEIM, MONA R. ELLIOTT, ELFRIDA D. ELLIOTT, MARVIN & ELSIE ENGEN, STEVE ENSOR, FRANK P. FIRST FEDERAL SAVINGS& LN FLEET MORTGAGE CORP FORSBERG, CAROL J. FULLER, ERMA HANSEN GERHARTZ, GREGG W. GITZ, RICK GRACE BAPTIST CHURCH GUSTAFSON, AUDREY HAMMOND, MICHAEL R.	HANSON, ODIN HARRON, BRIAN G. HILLTON HOG FARM HOFFERT, ROSALINE A. HOGAN, JACK L. HOLTEN, INGA HOODIE, FRED E. HOOPMAN, TINA OLSON HORNBEAK, WALTER INTERSTATE BRANDS IVERSON, JERALD JACOBSON, GARY S. JENSEN, GORDON JENSEN, ORVILLE JOHANESON, HARRY JOHNSON, DAVID S. & LISA JOHNSON, DEAN JOHNSON, JOHN L. JONES, CHARLES A. KALBAKDALEN, HELMER KELLY, RYAN P. KETCHUM, GARY KNOLL, JUSTIN KNUTSON, RYAN K. KOLTES, ROBERT D. KRANZ, GREGORY M. LANCTOT, TRACY LARSON, ROBERT L. LEEPER, JACK (ED) LEVASSEUR, WANDA LICHTSINN, NORMAN W. LOKEN, DIANNA L. MARQUIS, PAUL MARTINSON, EDWOOD MESSNER, DAVID MEYER, JAY V. MEYERS, BRUCE MOEDE, RENA (WALLACE) MORRIS, MATTHEW P. NEIL, DAVID D. NELSON, AMY NELSON, BRUCE N. NELSON, DARREL W. NORDIN, ERICK,DAN&JEFF C NORTHWESTERN BELL TELE CO NORWEST MORTGAGE INC OLSON, DONOVAN	OLSON, GREG P. OLSON, KENNETH H. OLSON, KIM OLSON, RODNEY PARSLEY, HAROLD PEDERSON, MARY PEDERSON, NANCY PENTTINEN, RENEE V. PETERSEN, RICHARD PETERSON, KIPP RAHN, JOHN RAICHE, JOSEPH B. RAUEN, LAWRENCE R. RICCI, ANTHONY J. RINGLING, DONALD RODAHL, TAWNYA D. ROY, RANDALL R. RTR MANUFACTURING RUNCK, CLAYTON JR. SANDLAND, ROBERT R. SCHMIT, THOMAS C. SCHULTZ, ORISSA SEARLES, DAVID S. SHERLOCK, JEAN MRS. SHERVA-OLLERICH, CAROLE SKIME, TROY R. SKYBERG, MARLIS A. SMITH, JACKIE MARIE SMITH, JULENE E. SMITH, PAULA SOMMERFELD, KELLY L. STACK, JEFF E. & CARLA STANISLOWSKI, STAN SWANSON, JOEL A. THRONE, LYNN TIMM, EDWARD F. UNITED MORTGAGE CORP VAN CAMP, JEFFREY T. VAN WYGARDEN, RAY H. WALLENBERG, JAMIE L. WATELAND, MIKE WHISTLER, LEON L. JR. WICK, LYLE WILCOWSKI, ROLAND ZORNESS, JESSE
---	---	---