



Volts and Jolts

Published monthly for the members of
RED LAKE ELECTRIC COOPERATIVE, Inc.

One of the Minnkota Power Systems

SERVING THE FOUR-COUNTY AREA OF MARSHALL, PENNINGTON, RED LAKE AND POLK

VOL. 45 – NO. 07

RED LAKE FALLS (RED LAKE COUNTY), MINNESOTA 56750

MAY 2010



Milton R. Young Station

Milton R. Young Power Plant tour scheduled for June 15 and 16

Red Lake Electric Cooperative and Clearwater-Polk Electric Cooperative plan to cosponsor a tour of the Milton R. Young Power Plant June 15 and 16.

The first day of the trip will include a stop at Minnkota Power Cooperative's headquarters in Grand Forks. Time will be spent at the Ashtabula Wind Energy Center near Pillsbury, N.D. A relaxing evening will be spent at the Seven Seas Motel in Mandan, which will include a banquet sponsored by Minnkota Power.

The second day of the tour includes visiting the Milton R. Young generation station near Center, N.D. It will also include a drive through the open pit lignite mines (weather permitting) to see the mining operation first hand. You are guaranteed to have a better

understanding of the process involved with generating the electricity that serves you.

The cost to participate in the tour is \$80 per person, (733004.04 Mark Gustafson) double occupancy, \$100 single occupancy. This includes transportation, meals and lodging. The tour is open to all Red Lake Electric Cooperative members and/or spouses.

The tour group will depart from Red Lake Electric Cooperative's headquarters in Red Lake Falls at 7 a.m. Tuesday, June 15. Approximate time of return is 9 p.m. Wednesday, June 16.

Registrations and payment are due by June 1.

If you have not partaken of this tour, sign up today for a learning experience.



Power Plant Tour Registration

June 15 and 16, 2010

Sign up deadline is June 1, 2010

NAME OF PARTICIPANTS _____

ADDRESS(ES) _____

TELEPHONE NUMBER _____

NUMBER OF PARTICIPANTS _____

ACCOUNT NUMBER _____

AMOUNT ENCLOSED _____

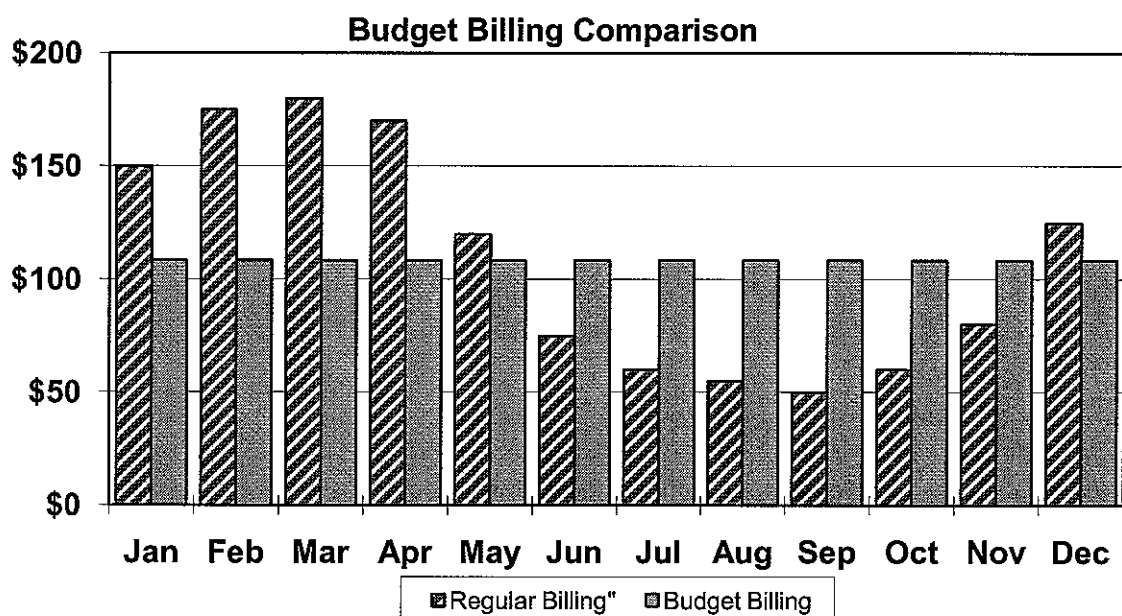
\$80 Per Participant, Double Occupancy • \$100 Per Participant, Single Occupancy

Return to RLEC, P.O. Box 430, Red Lake Falls, MN 56750, along with your check. RLEC will contact you later with details. Your check or deposit will be returned if the tour should be cancelled for some reason. If it becomes necessary for you to cancel out on the trip, it is required that you notify RLEC at least 48 hours before departure to be eligible for a refund. Registration for the trip is on a first-come, first-served basis with a limited number of openings. If you have previously partaken of the trip, you will be put on a space availability standby.

QUICK TAKES

A look at some statistics from your Red Lake Electric Cooperative

If you like to plan ahead or avoid billing surprises, we recommend Budget Billing for your monthly Red Lake Electric Cooperative energy bill. By using a Budget Billing plan, you average out your monthly payments to R.L.E.C. based on your past years billing history. This enables you to manage better, the bigger bills that normally show up during the winter heating season. The time to start Budget Billing is now. Contact R.L.E.C. today for more information about your Budget Billing amount. 218-253-2168 or 1-800-245-6068.



Retail rates to increase with August billing

Red Lake Electric Cooperative's board of directors recently approved a retail rate increase which will, on average, increase the cost to members an average of 6 percent beginning with the monthly billing in August of 2010. The increase in rates is needed to offset a rate increase from Minnkota Power Cooperative that occurred in March of this year.

For on-peak usage, the rate increase will amount to \$6.80 per month for an average monthly usage of 1,300 kWhs. For off-peak usage, the increase will amount to \$46 per heating season for those using 20,000 kWhs, the annual average energy used by residential customers.

Members will also see a continuation of seasonal rates that were first implemented with the Cooperative's retail rate increase in July of 2007. Seasonal rates, for most, will be (4934002.04 Burrack Farms) higher in the winter months or billing periods of January, February and March, and lower rates the remaining nine months of the year.

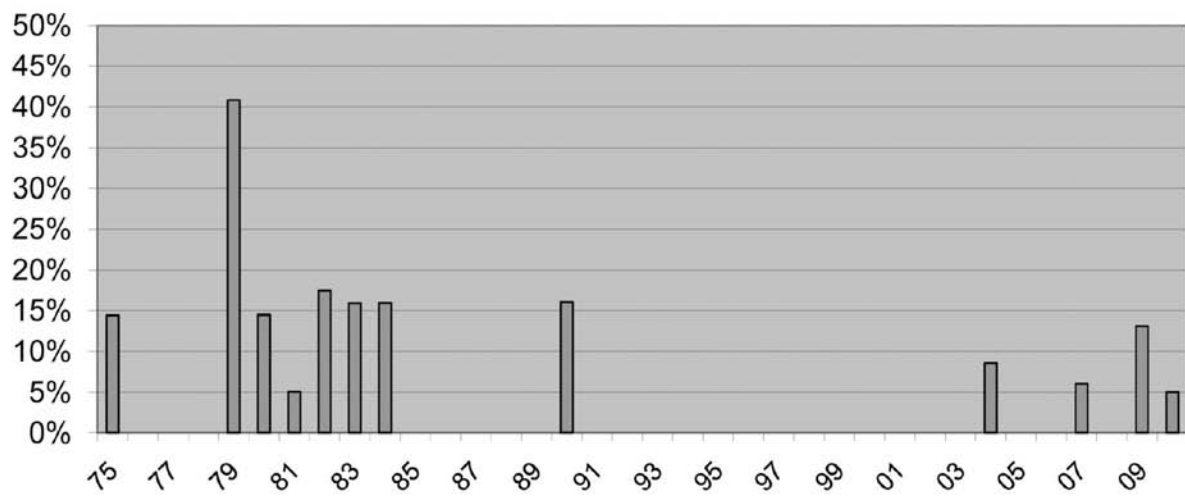
Higher retail rates in the winter are the result of the higher wholesale cost of electricity for those months, as well as increased distribution system costs associated with rising winter peak demands for energy.

Even with energy conservation measures encouraged by the Cooperative's rebate program and the response by customers who have used these rebates to upgrade to more energy efficient heating systems and appliances, the demand for energy, especially over peak periods, continues to increase.

Retail Rate Comparison					
Rate 1. General Service Billing Comparison (15 kVA transformer)					
Monthly Usage	Current Rate		New Rate		
	Jan-Mar	Apr-Dec	Jan-Mar	Apr-Dec	
0 kWh	\$20.00	\$20.00	\$22.00	\$22.00	
50 kWh	\$24.50	\$24.50	\$26.50	\$26.50	
100 kWh	\$29.00	\$29.00	\$31.00	\$31.00	
200 kWh	\$38.00	\$38.00	\$40.00	\$40.00	
300 kWh	\$47.00	\$47.00	\$49.00	\$49.00	
500 kWh	\$65.00	\$65.00	\$67.00	\$67.00	
800 kWh	\$87.50	\$84.80	\$91.00	\$88.80	
1000 kWh	\$102.50	\$98.00	\$107.00	\$103.00	
1200 kWh	\$117.50	\$111.20	\$123.00	\$117.40	
1500 kWh	\$140.00	\$131.00	\$147.00	\$139.00	
2000 kWh	\$177.50	\$164.00	\$187.00	\$175.00	
3000 kWh	\$252.50	\$230.00	\$267.00	\$247.00	
4000 kWh	\$327.50	\$296.00	\$347.00	\$319.00	
5000 kWh	\$402.50	\$362.00	\$427.00	\$391.00	
Off-peak Electricity, Short Term Controlled (annual)					
	Current Rate		New Rate		Increase
5000 kWh	\$338.00	\$338.00	\$364.00	\$364.00	\$26.00
10000 kWh	\$676.00	\$676.00	\$728.00	\$728.00	\$52.00
15000 kWh	\$1014.00	\$1014.00	\$1092.00	\$1092.00	\$78.00
18000 kWh	\$1162.00	\$1162.00	\$1244.00	\$1244.00	\$82.00
20000 kWh	\$1258.00	\$1258.00	\$1344.00	\$1344.00	\$86.00
25000 kWh	\$1573.00	\$1573.00	\$1674.00	\$1674.00	\$101.00
Off-peak Electricity, Long Term Controlled (annual)					
	Current Rate		New Rate		Increase
5000 kWh	\$248.00	\$248.00	\$264.00	\$264.00	\$16.00
10000 kWh	\$496.00	\$496.00	\$528.00	\$528.00	\$32.00
15000 kWh	\$744.00	\$744.00	\$792.00	\$792.00	\$48.00
18000 kWh	\$892.00	\$892.00	\$944.00	\$944.00	\$52.00
20000 kWh	\$988.00	\$988.00	\$1044.00	\$1044.00	\$56.00
25000 kWh	\$1248.00	\$1248.00	\$1314.00	\$1314.00	\$66.00

Retail Rate Change Effective August, 2010 Billing		
Rate 1. General Service		
	Current Rate	New Rate
Monthly Facilities Charge		
15 - 10 kVA Transformer	\$17.00	\$19.00
11 - 25 kVA Transformer	\$20.00	\$22.00
26 - 75 kVA Transformer	\$23.00	\$25.00
First 500 kWh	\$0.090	\$0.090
Over 500 kWh (Jan - Mar)	\$0.075	\$0.080
Over 500 kWh (Apr - Dec)	\$0.066	\$0.072
Multi-phase Surcharge	\$17.00	\$18.00
Rate 2. On Peak Service, over 75 kVA Transformer		
	Current Rate	New Rate
Monthly Facilities Charge	\$41.00	\$44.00
First 35,000 kWh (Jan - Mar)	\$0.050	\$0.053
First 35,000 kWh (Apr - Dec)	\$0.048	\$0.051
Over 35,000 kWh (Jan - Mar)	\$0.047	\$0.051
Over 35,000 kWh (Apr - Dec)	\$0.045	\$0.049
Demand Chg per kW (Jan - Mar)	\$9.00	\$10.00
Demand Chg per kW (Apr - Dec)	\$6.00	\$6.00
Rate 3. Seasonal Service over 75 kVA Transformer		
	Current Rate	New Rate
Monthly Facilities Charge per kVA	\$0.46	\$0.49
All kWh Charge (Jan - Mar)	\$0.075	\$0.080
All kWh Charge (Apr - Dec)	\$0.066	\$0.072
Multi-phase Surcharge	\$17.00	\$18.00
Rate 4. Interruptible Service over 25 kVA Transformer		
	Current Rate	New Rate
Monthly Facilities Charge	\$41.00	\$44.00
First 35,000 kWh (Jan - Mar)	\$0.050	\$0.053
First 35,000 kWh (Apr - Dec)	\$0.048	\$0.051
Over 35,000 kWh (Jan - Mar)	\$0.047	\$0.051
Over 35,000 kWh (Apr - Dec)	\$0.045	\$0.049
Off-peak Heating Rates		
	Current Rate	New Rate
Monthly Off-peak Equipment Chg	\$4.00	\$4.50
Short-term Control per kWh	\$0.058	\$0.062
Long-term Control per kWh	\$0.040	\$0.042
Security Lighting Service		
	Current Rate	New Rate
100 watt HPS Light Lease	\$7.00	\$7.00
175 watt MV Light Lease	\$8.00	\$8.00
Standby Service (retain de-energized service only)		
	Current Rate	New Rate
Monthly Charge	\$9.00	\$10.00

History of Rate Increases - Based on (1,000 kWh's)



Calvary Lutheran Church to celebrate 125 years

Calvary Lutheran Church, St. Hilaire, will celebrate 125 years of discipleship June 12 and 13.

Activities planned for June 12 include a car show, a flea market, a parade, a softball tournament, yard games, canoe races, an old-fashioned pie social and grilling at the park.

On June 13, regular morning worship will be held at 10:30 followed by a dinner for the membership. An afternoon anniversary service will be held at 1:30 p.m. It will include special music and reminiscing. The community is invited to participate in all of the events throughout the celebration.

Calvary Lutheran Church began in 1885 when 25 members signed a petition to organize. After worship services on March 13, 1885, a meeting was held and a motion was passed to organize a "menighed". The name, St. Hilaire Skandinaviske Lutherske Menighed was

adopted.

A second meeting was held March 24, 1885 at which time copies of the adopted church constitution were distributed to any prospective members. People were invited to review the constitution to make sure that there was nothing in it that was in any way contrary to the Word of God.

The first baptism was performed July 14, 1885, with the first confirmation class confirmed Christmas Day, December 25, 1886.

The organization of St. Pauli congregation, north of Hazel, began in December 1890. Some families from the St. Hilaire congregation joined St. Pauli as it was located closer to their farmstead. St. Pauli and Calvary churches have worked and shared in their ministry for many years.

The original church for the St. Hilaire congregation was built in 1891. It was dedicated in 1894. The

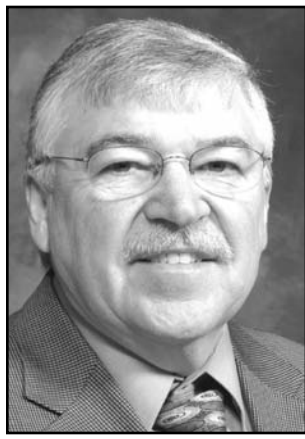
church building was raised and a basement added in 1921. In 1939, additional property south of the church was purchased. An addition and extensive remodeling of the church began in the fall of 1973. The dedication for these improvements was May 5, 1974.

December 1889 was when the site for the cemetery, north of St. Hilaire, was obtained. Many of the church's early pioneers have been laid to rest in the cemetery.

At one time, the St. Hilaire parish included Calvary, St. Pauli, Clearwater and Oak Ridge Lutheran Churches.

Today, the St. Hilaire parish includes Calvary Lutheran and St. Pauli Lutheran. The congregations are served by Pastor Terri Cuppett. She has led the parish ministry for ten years.

Calvary Lutheran Church,
continued on page two



Manager's Comments

by Roger Johanneck



Rate increase

As you may have already read on our front page story this month, our rates for energy will increase with the bill you receive in August 2010. While the increase in rates has been forecasted in this news letter and at district, informational and annual meetings; it doesn't make it any easier to pass on that news in this issue of the *Volts and Jolts*.

Wholesale power costs from Minnkota power increased 5 percent in March of this year and that increase is the reason why your cooperative is raising it's rates with your August billing. Wholesale power costs now comprise 70 percent of our cost of providing electric service to our members. When such a large part of our cost of doing business increases by this amount, it is simply too much for us to absorb without passing that cost on to our members.

If there is any good news in this increase, it was that the increase was originally planned to take effect in May but was delayed until the August billing. Minnkota's increase in their rate was less than they had projected, and our cooperatives peak energy demands, even though higher than last year, were less than I had originally budgeted for. When we learned our budgeted wholesale power expense for 2010 would be less than we had planned for; your board of directors responded by delaying the increase to the membership.

The main driver in Minnkota's

increasing cost of providing service to us and in turn the reason for it's member systems having to increase rates to their members are a direct result of massive investments in Environmental Protection Agency (EPA) mandated pollution control equipment at the power plant and investments in new transmission lines needed to deliver renewable energy to the grid.

I have talked about it before but will mention it here again: The investments in pollution control equipment has a price and it's a costly one. The \$360 million that Minnkota is investing in it's Young 1 and Young 2 generating plants is more than the original cost to build these power plants. The time to construct, the cost to add this new equipment and to finance these environmental plant upgrades is happening over a five-year stretch that began in 2008. The recent increase in power cost from Minnkota is in the middle of that five-year project and will be followed up by increases in 2011 and 2012 when the plant upgrades will be completed. Minnkota projects increases of 9 percent each of the next two years will be needed to absorb the costs of these environmental upgrades.

Red Lake Electric Cooperative has fared better with it's expense increases to the distribution system, that is, our cost of providing you service minus the wholesale power cost from Minnkota. In 2009, our

distribution costs decreased slightly from 2008.

As a counter to the increased costs faced by Minnkota, Red Lake Electric and ultimately to you, our customers, Red Lake Electric will continue (2330001.02 Calvin Harstad) with our conservation improvement program. This program is designed to help you use less energy and save you money on your monthly energy bill. I encourage you to think energy efficiency when you make decisions about the products, appliances and heating system you use in your homes and businesses. Efficiency and conservation continue to be the best ways to confront rising energy costs. If you have questions about the feasibility or payback of making an upgrade to your present heating system, please give us a call; we can help you with that.

The "History of Rate Increases" graph shows us we have had higher increases than the one you will see on your August 2010 billing, and periods where we have gone years without any increase. As you consider the information provided here, I hope you find some consolation in knowing that our rates have been among the lowest across the state and nation for rural electric cooperatives and that we have been competitive with other forms of energy. We give you our continued pledge to do what we can to keep it that way.

Projects that will be funded with horse trail pass funds over the next year include:

- Horse trail rehabilitation within the Richard J. Dorer Memorial Hardwood State Forest, as well as Camden, Glacial Lakes and Sibley state parks.

- Horse camp improvements at Wild River and Fort Ridgely state parks, as well as Togo Horse Camp within George Washington State Forest.

- Kiosk and orientation signs on the horse trail system at Sand Dunes State Forest.

Horse trail passes can be purchased from DNR electronic license system vendors across the state. These are the same vendors that sell fishing and hunting licenses.

For more information about horseback riding, past projects funded with horse trail pass funds, and how to buy a pass online, call the DNR Information Center, 651-296-6157 or toll-free at 888-646-6367 between 8 a.m. and 4:30 p.m. Monday through Friday or visit www.mndnr.gov/horseback_riding.

Calvary Lutheran Church,

continued from page one

Regular Sunday worship services are held at Calvary and St. Pauli with alternating 9 a.m. and 11 a.m. starts. Sunday School is held at 10 a.m. at each church.

If you are interested in any of the special events planned for June 12, contact numbers are as follows: parade, 218-964-5423 or 218-686-8784; flea market, 218-964-5051; and canoe races, 218-964-5051.

May God's blessings be upon Calvary Lutheran as it continues to carry out its discipleship in the St. Hilaire community and beyond.



Report from the Office

by Shirley Bregier

Budget Billing and Auto Pay

Would you like to pay the same amount for your electric bill each month? As a customer of Red Lake Electric you can do that. RLEC offers you a service to even out your electric bills for the year for our residential customers. Budget Billing is the payment plan that spares you from unpredictable bills caused from seasonal variations. Budget billing does not reduce your energy expense; it simply spreads out your expense over a 12-month period.

Red Lake Electric starts the budget billing period in May of each year. Your electric account must have 12 months of usage and must be paid up to date. Your usage for the previous 12 months will be averaged to get your monthly budget payment. You start the budget payments in May so throughout the summer you start building a credit balance to help carry you through the winter months when traditional-

ly your electric bill is higher.

We review your budget plan every six months to compare your actual energy usage costs to what we have estimated your budget costs to be.

You will continue to receive your electric bill monthly. Your bill will show the actual usage and costs as well as the (4433002.05 Kevin and Beth Ann Ballard) budget amount due. If at any time you notice a significant difference in the amount you are paying and your actual balance owing you can call the office to have us look at your account information and reevaluate your budget amount.

If you would like to enroll in Budget Billing just call our office at 1-800-245-6068 or send an e-mail to redlake@minnkota.com. We will calculate the budget amount and you can decide if you want to participate.

Another program that Red Lake

Electric offers is Auto Pay. Auto Pay allows the Cooperative to automatically take the payment of your electric bill from your checking or savings account on the 5th of each month (the date your electric bill is due).

To enroll in Auto Pay, you need to sign an authorization form and give us a voided check. The form can be found in the Volts and Jolts, on our website www.redlakeelectric.com or call the office and we will send you a form. Auto Pay saves you the time of writing out a check each month and the postage to mail it to us.

Congratulations to all the graduates! Whether it be from preschool, kindergarten, high school or college, it is an event worthy of celebration. Be proud of what you have accomplished and be excited to take the next step in your life's journey.

Horse trail pass benefits riders and horses

As Minnesotans saddle up for the spring horseback riding season, the Minnesota Department of Natural Resources (DNR) reminds riders to get a horse trail pass before hitting any DNR-managed trails. Riders without the pass may be subject to fines.

Introduced in 2007, the pass, which is issued to the rider, not the horse, and costs \$21 for the calendar year or \$5 daily, is required on horse trails within state parks, state forests, state trails, and state recre-

ation areas for anyone 16 years of age and older. Riders must possess a signed pass when riding on DNR-managed horse trails.

The horse trail pass has generated approximately \$358,000 in its first three years, averaging about \$120,000 each year.

The DNR manages more than 1,000 miles of horse trail and approximately 500 horse campsites. An equestrian advisory group works with the DNR on the horse trail program.

Mission Statement

It is the mission of Red Lake Electric Cooperative to enhance the quality of life for people of our service area by consistently providing quality electric service and other valued services while holding our employees, our community and our environment in high regard.



Red Lake Electric Cooperative, Inc.

One of the Minnkota Power Systems

WE PROUDLY PRESENT TO YOU

The Red Lake Electric Cooperative Customer Service Guarantee



It's short and simple! Red Lake Electric Cooperative employees will meet or exceed your expectations of friendly, courteous service and will meet any commitments they make to you. If your expectations of the service provided by our employees is not met, please contact me at the Red Lake Electric Cooperative office, 253-2168. You will receive \$5.00 for your inconvenience and our promise to serve you better in the future. Our employees' commitment to quality customer service makes this guarantee possible.



Red Lake Electric Cooperative, Inc.

One of the Minnkota Power Systems

ROGER JOHANNECK
General Manager



Red Lake Electric
Cooperative, Inc.

One of the Minnkota Power Systems

Things you should know about your electric service

BILLINGS AND COLLECTION

You will receive your energy bill on or near the 20th of each month.

Payment of your monthly energy bill is due on the 20th of the month. You may pay your bill in person at RLEC during office hours, use the 24-hour drive-up drop box located next to the RLEC office, by Auto Pay, or by mail. Payment must be in the office, drop box, Auto Pay, or in the mail, as evidenced by the postmark, by the 5th day of the following month to avoid a late payment charge. A 1 1/2% monthly late payment charge will be computed on delinquent energy bills, the minimum late payment charge will be \$1.00.

If your payment is not received by the 15th of the month, a final notice of disconnection statement will be included on your following bill. The final notice statement will notify you when your electric service will be disconnected if the delinquent amount remains unpaid. If an employee is sent to disconnect your electric service, a \$50 collection fee will be charged to your account, even if you pay the collector.

To have a disconnected service reconnected, all amounts owing, a \$50 reconnection fee, and a security deposit must be paid. If the service must be reconnected after normal working hours, a \$100 reconnection fee must be paid.

BAD CHECKS

A \$15 charge will be levied each time a check is returned because of nonsufficient funds, account being closed or payment stopped.

OUTAGES

In case your electricity goes out, please do the following:

1. Check your fuses or breakers at the yard pole or meter pedestal.
2. Call your neighbor to see if they are out of electricity also.
3. Call the RLEC office (218-253-2168 or 1-800-245-6068) during working hours or 218-253-2200 after hours. We will accept collect calls for outages only.

METER TESTS

RLEC has a schedule in place to have its meters periodically tested for accuracy. Results from these tests show that meters generally slow down with age; however, if you think that your meter is recording too much usage, RLEC will test it for accuracy. You must pay a test fee in advance of the test. If the meter test shows that the meter was inaccurate, the test fee will be refunded to you.

STOPPED METERS

If you find your meter has stopped and you are using electricity, please contact the office immediately so we can replace it. Average consumption will be billed to the member for the time the meter was stopped so there is no advantage in not reporting a stopped meter.

METER READINGS

An automated meter reading system is utilized to obtain monthly meter readings. Although the system is normally reliable, there is always a chance that the correct reading has not been transmitted to the office for billing. Customers should periodically read their meter and compare it to the reading on the billing statement. If the actual reading is not close to the billing statement reading, please call the office.

GENERAL SERVICE RATES

Facilities charge variable \$17 to \$23 month
First 500 KWH9.0¢ Kwh
Over 500 KWH (April-Dec.)6.6¢ Kwh
Over 500 KWH (Jan.-Mar.)7.5¢ Kwh
Multiphase users add \$17/month cost of service charge.

Standby, \$9/month (meter disconnected but the power line retained; standby is not available on services larger than 15 KVA transformer capacity).

Security light, \$7/month, high pressure sodium, \$8/month, mercury vapor; water heater flat credit, \$5/month (on January-April billing); off-peak equipment charge, \$4/month per heat meter; off-peak electric heat rate, 4.0¢/kWh long-term control, 5.8¢/kWh short-term control.

RED LAKE ELECTRIC COOPERATIVE, Inc.

VOLTS & JOLTS

(USPS 663-400)

Published monthly by the Red Lake Electric Cooperative, Inc., 412 International Drive SW, Red Lake Falls, Minnesota 56750-0430, in the interest of its members and others. Periodical Postage Paid at the U. S. Post Office in Red Lake Falls, Minnesota 56750. POSTMASTER, SEND ADDRESS CHANGES to Volts & Jolts, c/o Red Lake Electric Cooperative, Inc., P. O. Box 430, Red Lake Falls, Minnesota 56750-0430. E-mail: redlake@minnkota.com

OFFICERS AND DIRECTORS

PRESIDENTKelly Lundeen
VICE PRESIDENTBonnie Christians
SECRETARY-TREASURERMark Hanson
DIRECTORSRobert Olson, Robert Finstad,
Steven Linder, Colette Kujava,
Randy Versdahl, Peter Mosbeck

Subscription Rate\$2.50 per year

NOTICE

Hidden within the text of the articles on pages 1, 2, 3 and the back page of this issue of the Volts & Jolts are the names and account numbers of five RLEC members. They will appear within the articles in parenthesis as such (99-99-99-999-99 Roger P. Member). If you find your name and account number, clip it out and send it with your next payment. You will be credited with \$5 on your electric bill.

Recipe corner

Spicy Grilled Chicken

- 3/4 c. finely chopped onion
- 1/2 c. grapefruit juice
- 2 tbsp. olive or vegetable oil
- 2 tbsp. soy sauce
- 1 tbsp. honey
- 1 garlic clove, minced
- 1-1/2 tsp. salt
- 1-1/2 tsp. rubbed sage
- 1-1/2 tsp. dried thyme
- 1 tsp. ground allspice
- 1 tsp. garlic powder
- 1/2 tsp. ground cinnamon
- 1/2 tsp. ground nutmeg
- 1/4 tsp. cayenne pepper
- 1/4 tsp. pepper
- 6 boneless skinless chicken breast halves

In a large resealable plastic bag or shallow glass container, combine the first 15 ingredients; mix well. Reserve 1/3 cup for basting. Refrigerate. Add chicken to remaining marinade and turn to coat. Seal bag or cover container; refrigerate overnight. Drain and discard marinade. Grill chicken, uncovered, over medium heat for 3 minutes on each side. Baste with reserved marinade. Continue grilling for 6 to 8 minutes or until juices run clear, basting and turning several times. Yield: 6 servings.

Grilled Cheese Loaf

- 1 package (3 oz.) cream cheese, softened
 - 2 tbsp. butter or margarine, softened
 - 1 c. (4 oz.) shredded mozzarella cheese
 - 1/4 c. chopped green onions with tops
 - 1/2 tsp. garlic salt
 - 1 loaf (1 pound) French bread, sliced
- In a mixing bowl, beat cream cheese and butter. Add cheese, onions and garlic salt; mix well. Spread on both sides of each slice of bread. Wrap loaf in a large piece of heavy-duty foil (about 28 inches by 18 inches); seal tightly. Grill, covered, over medium heat for 8 to 10 minutes, turning once. Unwrap foil; grill 5 minutes longer. Yield: 10-12 servings.

Pork and Apple Skewers

- 3/4 c. barbecue sauce
 - 1/2 c. pineapple juice
 - 1/4 c. honey mustard
 - 1/4 c. packed brown sugar
 - 2 tbsp. soy sauce
 - 2 tbsp. olive or vegetable oil
 - 1-1/2 pounds pork tenderloin, cut into 3/4-inch cubes
 - 5 medium unpeeled tart apples
- In a large resealable plastic bag or shallow glass container, combine the first six ingredients; mix well. Reserve 1/2 cup for basting and refrigerate. Add pork to remaining marinade and turn to coat. Seal bag or cover container; refrigerate for at least 1 hour. Drain and discard marinade. Cut the apples into 1-1/2-inch cubes. Alternate pork and apples on metal or soaked bamboo skewers. Grill, uncovered, over medium heat, for 3 minutes on each side. Baste with the reserved marinade. Continue turning and basting for 8 to 10 minutes or until meat juices run clear and apples are tender. Yield: 6 servings.
- Editor's Note: As a substitute for honey mustard, combine 2 tablespoons Dijon mustard and 2 tablespoons honey.

Pork with Tangy Mustard Sauce

- 1 boneless pork loin roast (2-1/2 to 3 pounds)
 - 2 tsp. olive or vegetable oil
 - 1-1/4 tsp. ground mustard
 - 3/4 tsp. garlic powder
 - 1/4 tsp. ground ginger
 - 1/2 c. horseradish mustard
 - 1/2 c. apricot or pineapple preserves
- Rub roast with oil. Combine mustard, garlic powder and ginger; rub over roast. Place in a large resealable plastic bag or shallow glass container; seal bag or cover container. Refrigerate overnight. Grill roast, covered, over indirect heat for 60 minutes. Combine the horseradish mustard and preserves. Continue grilling for 15 to 30 minutes, basting twice with sauce, or until a meat thermometer reads 160 to 170 degrees. Let stand for 10 minutes before slicing. Heat remaining sauce to serve with roast. Yield: 10 to 12 servings.
- Editor's Note: As a substitute for horseradish mustard, combine 1/4 cup spicy brown mustard and 1/4 cup prepared horseradish.

Hawaiian Honey Burgers

- 2 pounds ground beef
 - 1/2 c. honey
 - 1/4 tsp. ground cinnamon
 - 1/4 tsp. paprika
 - 1/4 tsp. curry powder
 - 1/8 tsp. ground ginger
 - 1/8 tsp. ground nutmeg
 - 1/4 c. soy sauce
 - 1 can (23 oz.) sliced pineapple, drained
 - 8 hamburger buns, split and toasted
 - Lettuce leaves, optional
- In a bowl, combine the first seven ingredients; mix well. Shape into eight 3/4-inch thick patties. Grill the burgers, uncovered, over medium heat for 3 minutes on each side. Brush with soy sauce. Continue grilling for 4 to 6 minutes or until juices run clear, basting and turning several times. During the last 4 minutes, grill the pineapple slices until browned, turning once. Serve burgers and pineapple on buns with lettuce if desired. Yield: 8 servings.

Maple-Glazed Chicken Wings

- 2 to 3 pounds whole chicken wings
 - 1 c. maple syrup
 - 2/3 c. chili sauce
 - 1/2 c. finely chopped onion
 - 2 tbsp. Dijon mustard
 - 2 tsp. Worcestershire sauce
 - 1/4 to 1/2 tsp. crushed red pepper flakes
- Cut chicken wings into three sections; discard wing tip section. In a large resealable plastic bag or shallow glass container, combine remaining ingredients. Reserve 1 cup for basting and refrigerate. Add chicken to remaining marinade and turn to coat. Seal bag or cover container; refrigerate for 4 hours, turning occasionally. Drain and discard marinade. Grill chicken, covered, over medium heat for 12 to 16 minutes, turning occasionally. Brush with reserved marinade. Grill, uncovered, for 8 to 10 minutes or until juices run clear, basting and turning several times. Yield: 6 to 8 servings.
- Editor's Note: The wings may be baked in a 375-degree oven for 30 to 40 minutes or until juices run clear.

From the Mail Bag

Dear Members of RLEC:

Thank you so much for your generous donation to the Polk County Sheriff's Mounted Posse. Thanks to supporters like you, we are able to hold our state training this year with internationally known trainer, Mary Hamilton, and Royal Canadian Mounted Patrol trainer, Ken Kaip.

We are so thrilled to be able to host this event and invite other mounted posse organizations from the surrounding area. It will be a very educational experience for all involved and will help us to be that much more effective in our search and rescue efforts when we are called upon.

We would like to invite you to stop by our state training event, which is being held at the RRV Winter Shows building on June 5 and 6 from 8 a.m. to 5 p.m.

We will also be listing your business in our advertisements in the local paper as a way of saying thank you and letting the community know of your generosity.

Thank you once again for being a Posse supporter!

Sincerely,
Nancy Koho
Treasurer

Dear RLE Trust:

Thank you to the Board of Directors of Red Lake Electric Trust, Inc. for the \$700 grant given to our program, Middle River-Thief Lake Living at Home/Block Nurse Program. We appreciate this generous gift which will help our elders live at home with assistance of volunteers recruited and trained through our program with the assistance of our staff. It is always impressive to see the success of Operation Round Up in funding numerous worthy projects.

Sincerely,
Cindy Huener
Program Director

Dear RLE Trust:

On behalf of the members of the Pembina Trail Resource Conservation and Development Association, Inc., I am writing to thank you for your support of the J.A. Hughes Elementary School garden. The Red Lake Electric Trust's generous donation will allow the project partners to begin preparations for the garden this spring.

Sincerely,
Charles Naplin
Chair

Dear RLE Trust:

The Middle River Senior Citizens organization thanks you for your generous donation to our Medical Transportation Fund. The money will be used to reimburse drivers for miles they drive taking residents 55 years of age and older to medical appointments. Without donations such as yours, this vital service would have to be discontinued and many area residents would be forced to move away from our rural community.

Sincerely,
Sue Grindeland
Secretary

Dear RLE Trust:

Thank you so much for the grant of \$1,000 for the Early Childhood Family Advocate Program. The money will allow us to continue services for the over thirty families that we currently serve. It truly will have a positive impact on our community.

I also appreciate the opportunity to speak at your annual meeting in Thief River Falls. It was a great way to get the word out about our program.

Sincerely,
April Ballard

Dear RLE Trust:

Thank you for the money we received for use at our annual safety camp. The families always enjoy the variety of items we give away and the electrical booth is always a favorite.

Margaret and Wanda
Red Lake Falls ECFE

Dear RLEC:

A belated thank you for the vice grip I won at the District 3 meeting in Newfolden. Also, thanks again for the Skil jig saw I won at the annual meeting in Thief River Falls. The meeting was very informative and the meal served was delicious!

Thanks again,
Carol Garthus
Middle River

Dear RLEC:

Thank you very much for the Skil jig saw I won at the annual meeting. I did not have one so it is very much appreciated and needed.

Thanks,
Orrin Olson
Middle River

Red Lake Electric Cooperative, Inc. Operating Report

MONTHLY COMPARISON

	MARCH 2009	MARCH 2010
Total Revenue	\$ 1,023,176	\$ 1,043,098
Total Margins	\$ 265,186	\$ 148,639
Cost of Power	\$ 554,698	\$ 645,743
KWH's Purchased	14,366,730	12,434,396
Capital Credits Paid to Estates ...	\$ 0	\$ 0

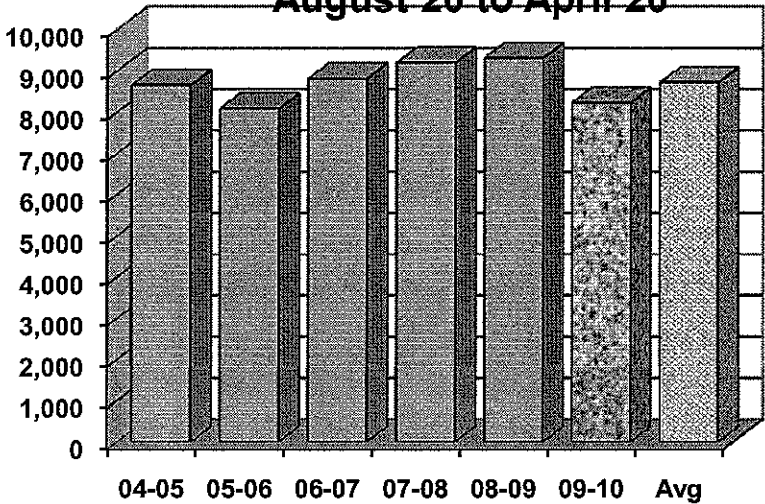
YEAR TO DATE COMPARISON

	MARCH 2009	MARCH 2010
Total Revenue	\$ 3,261,796	\$ 3,653,675
Total Margins	\$ 696,477	\$ 637,455
Cost of Power	\$ 1,853,513	\$ 2,248,600
KWH's Purchased	51,052,582	47,058,048
New Service Connections	0	1
Customers Served	5,157	5,196
Capital Credits Paid to Estates ...	\$ 11,502	\$ 15,609
Miles of Line		
Overhead	2,319	2,325
Underground	235	235

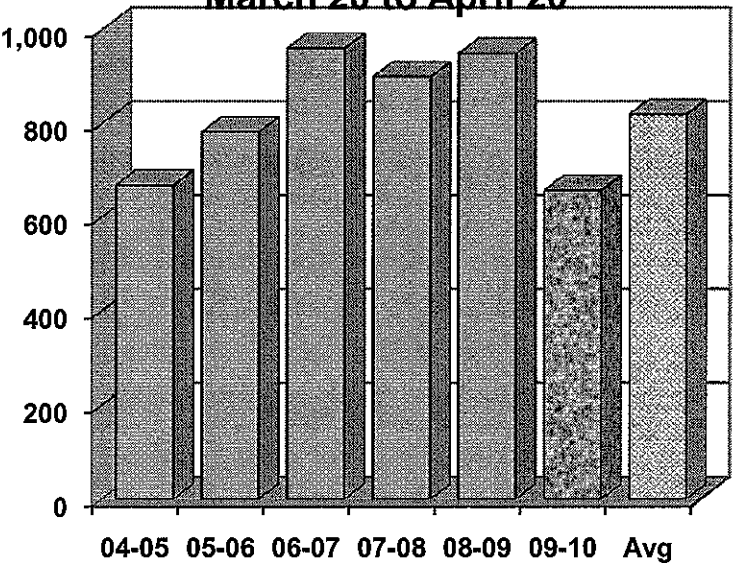
DEGREE DAYS

To determine degree days, you must calculate the daily mean temperature for the time period you are measuring. Degree day computation is based on the assumption that a building does not require any heat if the outside temperature averages 65 degrees during a 24-hour period. To obtain a degree day figure, the high temperature and the low temperature for the day are added and the total divided by two. That figure is then subtracted from 65. For example, if the high temperature was 30 degrees and the low temperature 10 degrees, the figure would be 30+10=40; 40/2=20; 65-20=45. This would be a 45-degree day. The higher the degree day figure, the more heat required to warm your home.

YEAR TO DATE DEGREE DAYS August 20 to April 20



DEGREE DAYS March 20 to April 20





Professional Lawn Spraying

Call Aaron Gagner at 218-280-8463

Fertilize your lawn and eliminate weeds at the same time!



**Call Today for
FREE Estimates**

*Spring
Spraying
Special*

Refer a friend
and Save \$5

*From Grass to Trees,
We Aim to Please!*

Available at The Gazette



**FULL COLOR
NO MINIMUM**

Some conditions apply.
Call or stop in for details.

8 1/2 x 11	30¢
8 1/4 x 14	35¢
11 x 17	40¢



**105 Main Ave, Red Lake Falls
253-2594**

customer appreciation day



thursday june 17, 2010



5:00pm-7:00pm
unity bank
parking lot

hamburgers
hot dogs
chips
salad
ice cream

Donations will be
accepted for the Red
Lake Falls Education
Endowment
Foundation
**UNITY BANK WILL
MATCH
DONATIONS***



**HEY KIDS!
register to win a
NEW BIKE**
16 years old and younger

218-253-2143 www.unitybanking.com 210 Main Ave Red Lake Falls
*Unity Bank will match donations for the Red Lake Falls Education Endowment
Foundation up to \$500. Member FDIC

**GOPHER STATE
ONE CALL**

Call before digging! It's the law!

1-800-252-1166

Farmers Union Oil Company

Thief River Falls 218-681-3512



- Fertilizer
- Petroleum products
- Town and country deliveries
- Tires, batteries, accessories
- Farm supplies

WILCOX PLUMBING AND HEATING, Inc.

RED LAKE FALLS

Plumbing/Heating/Air conditioning

BILL H. MOSER, Master Plumber
License No. 1770PM
BILL J. MOSER, Master Plumber
License No. 6039PM
Refrigerant Certified No. CFR089400285



- In-floor heating
- Oil furnaces
- Pressure systems
- Gas furnaces
- Electric heat pumps

FREE ESTIMATES
COMPLETE SALES AND SERVICE

218-253-4347

The Head-Quarters Hair and Tanning Salon

HAIRSTYLING FOR MEN AND WOMEN

PARK PLACE MALL
RED LAKE FALLS, MINNESOTA

218 253-4223

Security STATE BANK



- Operating loans
- Vehicle loans
- Farm real estate loans
- Consumer loans

"We appreciate your business."

218-796-5157
Fax 218-796-5158
tim.hagl@ssboklee.com





"THE FARMERS' HELPING HAND"

Dave Miller Agency

DAVE MILLER, AGENT
RURAL ROUTE 1
VIKING, MINNESOTA 56760



- All-Risk Crop Insurance
- Crop/Hail Coverage

218-523-5861

VOLTS AND JOLTS FEATURE OF THE MONTH

Providing a vital service to the Goodridge community at large

By Kevin Reich

Goodridge Area Fire and Rescue serves an important role throughout a large service territory. The coverage area for the firefighters and first responders includes one city and more than ten townships located in four different counties.

This area includes the city of Goodridge; Agder, Grand Plain and Moylan townships in Marshall County; Reiner, Goodridge, Cloverleaf, Star, Highland and Kratka townships in Pennington County; a portion of Hickory Township in Pennington County; and the western portion of the Red Lake Indian Reservation in Beltrami and Clearwater Counties.

Currently, the number of volunteer firefighters for Goodridge Area Fire and Rescue totals 30. The service tries to have at least two firefighters from each township within its service territory.

Current firefighters include Dale Hanson, fire chief; Joe Philipp, assistant fire chief; Clark Nelson, training officer; Manuel Byrd, John Cullen, Dave DeLong, Daryl Hamm, Doug Horachek, Joe Hruby, Tim Hruby, Dustin Isaak, Neil Jensen, Jim Johnson, Jason Kotrba, Marlin Kotrba, Nick Kotrba, Andrew Lallier, Mike Lovly, Dale Manderud, Dave Naeseth, Jesse Nelson, Andy Paulson, Bob Paulson, Chad Paulson, Gaylen Peters, Gary Quam, David Sjulestad, Rodney Wayne and Larry Weber, all of Goodridge; and Jeremy Nelson of Thief River Falls.

Volunteer first responders for Goodridge Area Fire and Rescue are also sought from each township. Currently there are 20 first responders, some serving double duty as firefighters also.

First responders include Naeseth, training officer; Monica Jones, radio operator; Byrd, Hanson, Doug Horachek, Heidi Horachek, Mishawn Homme, Danette Jensen, Johnson, Andrew Lallier, Sheri Lallier, Mike Lovly, Renae Marquis, Karyl Mayernik, Paula Mutnansky, David Sjulestad, MaryAnn Sjulestad, Wayne and Weber, all of Goodridge; and Sherri Rupprecht of Thief River Falls.

Goodridge Area Fire and Rescue is governed by a board. The board includes one member from each township and one from the city of Goodridge. The township representative is selected by the individual township boards. For most townships, the township representative is also a township officer, but can be a township resident at-large. Many of the representatives are also fire and rescue volunteers.

Current board members include Wayne, chairman, Grand Plain Township; Stacy Anderson, secretary; Jesse Nelson, Agder Township; Michael Drangstveit, Moylan Township; Rodney Hoffman, Reiner Township; John Lovly, Goodridge Township; Clark Nelson, Cloverleaf Township; David Sjulestad, Star Township; Danette Jensen, Highland Township; Randy Downs, Kratka Township; Darrin Arveson, Hickory Township; Gary Hasby, city of Goodridge; Hanson, Philipp and Naeseth. Anderson, Hanson, Philipp and Naeseth are non-voting members of the board.



First responders of Goodridge Area Fire and Rescue are, from left, MaryAnn Sjulestad, Karyl Mayernik, Heidi Horachek, Sheri Lallier, Renae Marquis, Monica Jones, Danette Jensen, Doug Horachek, Larry Weber, Dale Hanson, Andrew Lallier, Dave Naeseth and Rodney Wayne. Not pictured are Manuel Byrd, Mishawn Homme, Jim Johnson, Mike Lovly, Paula Mutnansky, Sherri Rupprecht and David Sjulestad.

son, Cloverleaf Township; David Sjulestad, Star Township; Danette Jensen, Highland Township; Randy Downs, Kratka Township; Darrin Arveson, Hickory Township; Gary Hasby, city of Goodridge; Hanson, Philipp and Naeseth. Anderson, Hanson, Philipp and Naeseth are non-voting members of the board.

"Each year we bill the individual townships for their share of the service coverage expense," said Anderson. "The townships are reimbursed by levying the expense to the township residents as part of their taxes."

Even though Goodridge Area Fire and Rescue's service territory extends into four counties, calls are dispatched by the Pennington County Sheriff's office dispatchers. Residents in Marshall, Beltrami, and Clearwater counties that are within the Fire and Rescue's coverage area, have had their names, addresses and phone numbers registered with the Pennington County Sheriff's office for call and dispatching purposes. When a call is received, volunteers are dispatched via a voice paging system.

Out-skirt volunteers keep personal gear and equipment in their own vehicles and/or homes. This allows respondents that are close to the call scene to report directly to the scene helping to reduce response time. Respondents from Goodridge and townships that are distant from the call scene will report to the scene with the necessary fire fighting and/or first responder vehicles and equipment.

"Those of us that are farmers will carry our gear right in our vehicles during the farming season," said Philipp. "If we are paged for a call, we can respond regardless of our location."

"Each first responder has a medical bag with equipment right in

their home," stated Naeseth. "This allows any first responder residing close to the call scene to travel directly to the scene to begin providing aid."

The Goodridge Fire Department formed in 1957. It provided service to the city of Goodridge and outlying rural areas with mainly firefighters from within the city. Maintaining sufficient volunteers was a challenge; therefore, in 1985, the Goodridge Area Fire Department was organized under a joint power agreement between Goodridge and the neighboring ten townships. Since this time firefighters have also been from the townships within the service territory.

In 1996, the initial group of volunteers participated in the necessary training to become first responders. This group operated independently of the firefighters for two years. In 1998, the two groups joined and since have operated as one entity. In 2005, the service took the name, Goodridge Area Fire and Rescue and incorporated with the state of Minnesota.

Currently, Goodridge Area Fire and Rescue operates and maintains a fleet of nine road traveling vehicles. The fleet includes three pumper trucks, two water tenders, one rescue unit and three grass fire rigs. Because of great community support, all of the Fire and Rescue's vehicles and equipment are housed in one building.

In 1986, Goodridge Area Development Association purchased the Manderud Brothers service station located in Goodridge. The association then donated the building to the Goodridge Area Fire Department. In 2004, an addition was added to the west end of the building. The cost of the addition was funded through county support, fund-raisers and donations.

Marshall County contributed

\$25,000, Pennington County contributed \$15,000 in material and labor and numerous donations were received. Donations were made by the Goodridge Lion's Club, Goodridge Lion Tamers, Goodridge Jaycees, Goodridge Area Development Association; Eagles, Legion and VFW all of Thief River Falls; and businesses and individuals.

It was a big day March 25 when a new pumper truck arrived in Goodridge. It had been on order since February of 2009. The truck utilizes a 2010 International chassis with the body from Crimson Fire in Brandon, S.D. The new truck replaces a 1978 pumper that was purchased used several years ago.



Goodridge Area Fire and Rescue firefighters are, front from left, Marlin Kotrba, Clark Nelson, Mike Lovly, Rodney Wayne, Jeremy Nelson, Joe Philipp, Gaylen Peters, Jesse Nelson, Manuel Byrd, board member John Lovly, Larry Weber, board member Mike Drangstveit, David Sjulestad, David Naeseth and Dale Hanson. Back: Gary Quam, Jason Kotrba, Dave DeLong and Daryl Hamm. Not pictured are John Cullen, Doug Horachek, Joe Hruby, Tim Hruby, Dustin Isaak, Neil Jensen, Jim Johnson, Nick Kotrba, Andrew Lallier, Dale Manderud, Andy Paulson, Bob Paulson and Chad Paulson.

Bray-Gentilly Mutual Insurance Co.

Locally Owned and Operated
Serving Policyholders Since 1900

218-683-3200

2017 Hwy. 59 SE • P.O. Box 592
Thief River Falls, MN 56701

INSURANCE FOR FARMS, HOMES AND PERSONAL PROPERTY

TELEPHONE US FOR AN AGENT NEAR YOU!

THIS SPACE FOR RENT

253-2594

COLOR Copies

FULL COLOR
NO MINIMUM
Some conditions apply.
Call or stop in for details.

Starting at 30¢

THE **GAZETTE**

105 Main Ave, Red Lake Falls
253-2594

Want to cut your heating cost by up to 50%?

Buy a YORK Affinity heat pump today!



GROVE MECHANICAL, INC.

Your hometown heating & air conditioning team!
Serving Crookston and the surrounding communities for 30 years.
(218) 281-3863

OFFICE PHONE
253-2168

OUTAGE PHONE
253-2200

1-800-245-6068



Red Lake Electric Cooperative, Inc.

One of the Minnesota Power Systems



Goodridge Area Fire and Rescue board members are, front from left, John Lovly, Goodridge Township; and Jesse Nelson, Adger Township. Middle: Stacy Anderson, secretary; Clark Nelson, Cloverleaf Township; Michael Drangstveit, Moylan Township; Gary Hasby, city of Goodridge; and Randy Downs, Kratka Township. Back: Rodney Wayne, chairman, Grand Plain Township; Joe Philipp, assistant fire chief; Dale Hanson, fire chief; Danette Jensen, Highland Township; and David Sjulestad, Star Township. Not pictured are Rodney Hoffman, River Township; Darrin Arveson, Hickory Township; and Dave Naeseth, first responder training officer.



Kayla, Wade and Lydia Nelson and Natalie Fiedler check out the pumper truck at Goodridge Area Fire and Rescue's open house. The open house was held March 20.



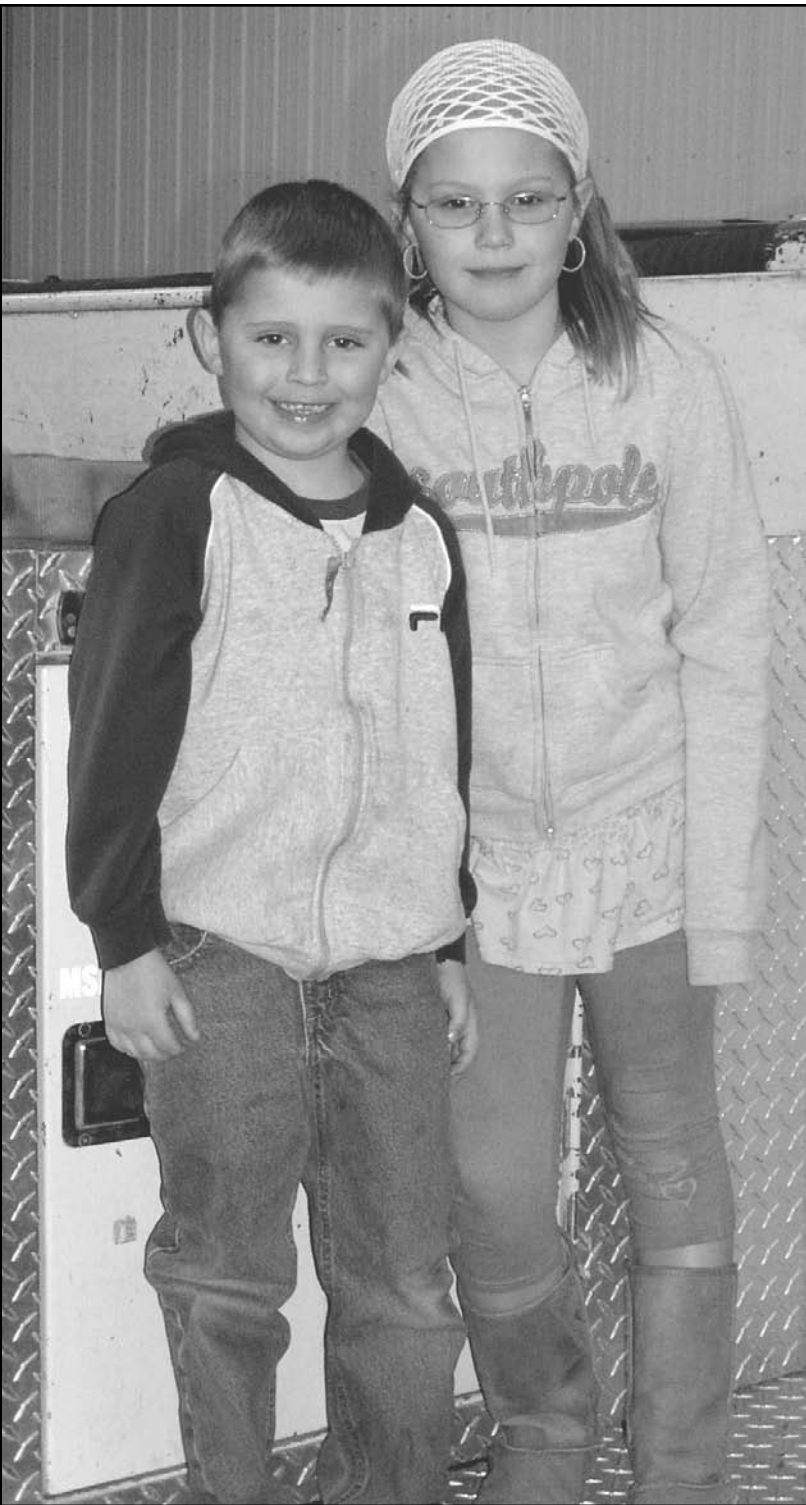
Dale Hanson, fire chief, answers questions that Goodridge area residents asked as they toured the Fire and Rescue hall March 20. Area residents were, from left, Irene Lovly, Natalie Fiedler, Elva Fiedler and Blake Fiedler.



Goodridge Area Fire and Rescue has a fleet of nine vehicles. The water tenders consist of a 1981 Mack with a 4,000-gallon tank and a 1985 International with a 3,200-gallon tank. Seven vehicles are equipped to carry water, ranging from 250 to 4,000 gallons.



It was a bright day in Goodridge on March 25. Not only because the sun was shining with a clear blue sky, but also because a bright red and silver fire truck arrived in town. After more than a year of waiting, Goodridge Area Fire and Rescue took delivery of a 2010 pumper truck. It is a welcomed addition to the Fire and Rescue fleet.



Young people checking out the equipment in the Goodridge Area Fire and Rescue hall were Jacob Zavoral and Madilyn Race. Each year an open house is held at the hall the evening of the spring fund-raiser.



Each year, Goodridge Area Fire and Rescue holds a fund-raiser to help support the service and its mission. This year's fund-raiser was held March 20 with area residents filling the community center. The event raised approximately \$10,000.



The west side of the Goodridge Area Fire and Rescue hall was built in 2004 at a cost of approximately \$80,000. The construction was funded with county support, fund-raisers and donations. Marshall County contributed \$25,000, Pennington County contributed \$15,000 of material and labor in kind and donations were received from Goodridge Lion's Club, Goodridge Lion Tamers, Goodridge Jaycees, Goodridge Area Development Association; Eagles, Legion and VFW of Thief River Falls; and area businesses and several individuals.

Informational Web Sites

The following is a list of Web sites that can provide information and education in reference to electrical safety and energy conservation. These Web sites are listed as links on Red Lake Electric Cooperative's Web site at www.redlakeelectric.com.

- Electrical Safety Foundation International: www.esfi.org
- Alliance to Save Energy: www.ase.org
- US Environmental Protection Agency: www.epa.gov/greenhomes
- Energy Star: www.energystar.gov
- Minnesota Safety Council: www.minnesotasafetycouncil.org
- Safe Electricity: www.safeelectricity.org
- Lighting Controls Association: www.aboutlightingcontrols.org

LOOK UP

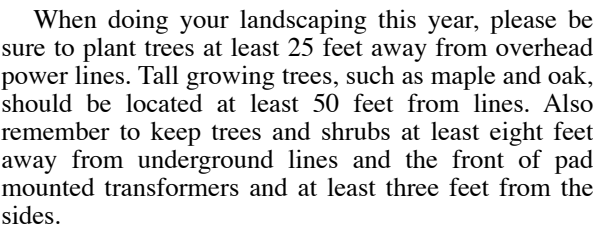
POWER LINES MAY BE OVERHEAD

Plant the right tree in the right place

Rebate forms that list the offer-



For additional information, contact RLEC at 253-2168 or 800-245-6068.



If you have questions about the types of trees to plant and the distances to maintain from power lines, contact Red Lake Electric Cooperative at 253-2168 or 800-245-6068.

<i>Energy Efficiency Equipment</i>	<i>Rebate Amount</i>	<i>Rebate Maximum</i>
CFL Lamp (Maximum 12 lamps)	\$2/bulb	\$24 per customer
Energy Star Clothes Washer	\$50	\$50
High Efficiency Electric Water Heater 80 gallon or larger, EF \geq 0.91, must be on load control	\$150/unit	\$150/unit
High Efficiency Furnace with ECM blower	\$150/unit	\$150/unit
High Efficiency Air Source Heat Pump 14.0 SEER, 8.2 HSPF	\$250/unit	\$250/unit
Supplemental Electric Heat Source for Air Source Heat Pump Must be on load control	\$500/unit	\$500/unit
Mini Split/Ductless Air Source Heat Pump	\$500/unit	\$500/unit
Geothermal Heat Pump Open loop, 16.2 EER	\$200/ton	\$2,500
Geothermal Heat Pump Closed loop, 14.1 EER	\$400/ton	\$5,000

<i>Energy Efficiency Equipment</i>	<i>Rebate Amount</i>
T8 Fluorescent Fixtures (Replacing T12 or incandescent) 1 Lamp to 4 Lamp Fixtures	\$5 to \$30 per fixture
T5 Fluorescent Fixtures (Replacing HID or incandescent)	Starting at \$60 per fixture
CFL Fixture	\$22/fixture
CFL Lamp	\$1.50/bulb
Split System Energy Efficient Air Conditioners and Air Source Heat Pumps	\$30 to \$40/ton
Single Packaged Energy Efficient Air Conditioners and Air Source Heat Pumps	\$35 to \$50/ton
Geothermal Heat Pump Open loop, 16.2 EER	\$200/ton
Geothermal Heat Pump Closed loop, 14.1 EER	\$400/ton
Energy Efficient Air Cooled and Water Cooled Chillers	\$30 to \$40/ton
Nema Premium® Three Phase Electric Motors	\$4 to \$15/HP
Energy Star Commercial Solid Door Refrigerator or Freezer	\$60 to \$250
Energy Star Ice Machine	\$200 to \$600
Energy Star Steam Cooker	\$300 to \$600
Energy Star Fryer	\$500

This list is not all inclusive. There are numerous other lighting retrofits. Other measures may also qualify. Any project totalling \$10,000 or more must receive written approval before project installation. Rebate maximum is 75% of project cost up to \$15,000.



FREEDOM COSTS A LOT LESS WITH A STRAIGHT DEAL.



**STRAIGHT
DEALS**

GET IT STRAIGHT

ON ALL SHADOW® SPIRIT 750
& SHADOW AERO® MODELS

AS
LOW
AS

1.99%

FIXED APR

for 36 months on approved credit*

UP
TO

\$1,700

TOTAL INCENTIVES

on select models**



HONDA



www.rvsports.com

OFFER ENDS JUNE 30TH

**Hwy 1 & 59 W,
Thief River Falls
218-681-1007**

**Hours:
M-F 9-5:30 Sat. 9-1**

honda.com ALWAYS WEAR A HELMET, EYE PROTECTION AND PROTECTIVE CLOTHING. NEVER RIDE UNDER THE INFLUENCE OF DRUGS OR ALCOHOL, AND NEVER USE THE STREET AS A RACETRACK. OBEY THE LAW AND READ YOUR OWNER'S MANUAL THOROUGHLY. *1.99% Fixed APR financing available for customers who qualify for super preferred credit tier for up to 36 months through Honda Financial Services. Payment example: 36 monthly payments of \$28.64 for each \$1000 financed. Offer good on all new and unregistered Shadow Spirit 750 and Shadow Aero models. Not all buyers may qualify. Higher rates apply for buyers with lower credit ratings. **Total Incentive discount of \$1,700 based on 2009 VT750 models after \$700 price reduction off original MSRP. \$600 Bonus Bucks and \$400 Spring Savings Incentives. Bonus Bucks and Spring Savings redeemable only for purchases at dealer on purchase date. No cash value. Non-transferable. Redemption value is not to exceed \$1,000. Offers and 6/30/10. Check with participating Honda Dealers for complete details. For rider training information or to locate a rider training course near you, call the Motorcycle Safety Foundation at 1-800-446-9227. Shadow® and Aero® are trademarks of Honda Motor Co., Ltd. ©2010 American Honda Motor Co., Inc. (4/10) 10-0833

Call Before You Dig

With the arrival of spring, many people have plans for excavating and planting projects. To ensure your safety and the safety of others, before digging or planting, call Gopher State One Call, 1-800-252-1166.



Red Lake Electric Cooperative members and area contractors are reminded, if you are planning to dig deeper than one foot, you must call Gopher State One Call – it's the law!

A call to Gopher State will get all utility underground lines and pipes located and marked, free of charge, within 48 hours.

Don't take chances – mistakes cost lives.

CALL

1-800-252-1166

BEFORE YOU DIG.



WHETHER YOU GET IT FOR
WORK OR FUN,
YOU NEED TO GET IT
STRAIGHT.



**STRAIGHT
DEALS**

GET IT STRAIGHT

ON ALL
BIG RED® MODELS

AS
LOW
AS

3.99%

FIXED APR

for 36 months on approved credit*

AND

\$500

BONUS BUCKS

on select models**



honda



RV Sports, Inc.

www.rvsports.com

Hwy 1 & 59 W,

Thief River Falls

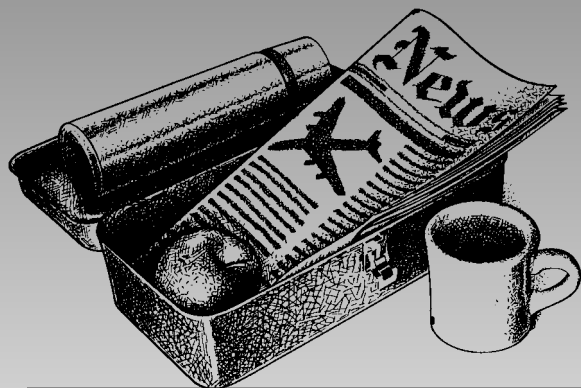
218-681-1007

Hours:

M-F 9-5:30 Sat. 9-1

OFFER ENDS JUNE 30TH

honda.com MULTI-PURPOSE UTILITY VEHICLES CAN BE HAZARDOUS TO OPERATE. FOR YOUR SAFETY, BE RESPONSIBLE. ALWAYS WEAR A HELMET, EYE PROTECTION AND APPROPRIATE CLOTHING. ALWAYS WEAR YOUR SEAT BELT, AND KEEP THE SIDE NETS AND DOORS CLOSED. AVOID EXCESSIVE SPEEDS, AND BE CAREFUL ON DIFFICULT TERRAIN. ALL MUV DRIVERS SHOULD WATCH THE SAFETY VIDEO "MULTIPURPOSE UTILITY VEHICLES: A GUIDE TO SAFE OPERATION" AND READ THE OWNER'S MANUAL BEFORE OPERATING THE VEHICLE. NEVER DRIVE UNDER THE INFLUENCE OF DRUGS OR ALCOHOL, ON PUBLIC ROADS, OR WITH MORE THAN ONE PASSENGER. BIG RED IS ONLY FOR DRIVERS 16 YEARS AND OLDER. DRIVER AND PASSENGER MUST BE TALL ENOUGH FOR SEAT BELT TO FIT PROPERLY AND TO BRACE THEMSELVES WITH BOTH FEET FIRMLY ON THE FLOOR. PASSENGER MUST BE ABLE TO GRASP THE HAND HOLD WITH THE SEAT BELT ON AND BOTH FEET ON THE FLOOR. RESPECT THE ENVIRONMENT WHEN DRIVING. *3.99% Fixed APR financing available for customers who qualify for prefered credit tier for up to 36 months through Honda Financial Services. Payment example: 36 monthly payments of \$29.52 for each \$1,000 financed. Offer good on all new and unregistered MUV700 models. **\$500 Bonus Bucks valid on 2010 MUV700 models. Bonus Bucks redeemable only for purchases at dealer on purchase date. No cash value. Non-transferable. Redemption value not to exceed \$500. Offer ends 6/30/10. Check with participating Honda Dealers for complete details. Big Red® is a trademark of Honda Motor Co., Ltd. ©2010 American Honda Motor Co., Inc. (4170) 10-0825



Your key to buy, sell or trade anything is the CLASSIFIEDS

The members are invited to use this FREE WANT AD service.

If you have anything to trade or sell, just drop a card to Red Lake Electric Cooperative, Box 430, Red Lake Falls, MN 56750.

For sale

FOR SALE – John Deere 95 Combine. Always shedded and runs and works great. Extra tires, drive belts and engine parts. Call 218-681-7176 evenings.

FOR SALE – Pro series trunion style weight distributing kit for pulling a camper, helps to control camper from swaying. Its new, only used once. Asking \$500. Call Crookston 218-281-5981.

FOR SALE – Weslo 2.0 elyptical, excellent condition, \$100; 5 person hot tub, no longer in working order (would make great feeder or watering tank for livestock), make an offer; a dozen 2-quart canning jars, make an offer; assortment of black house shutters, great condition, 10 at 42 inches by 14 inches, four at 24 inches by 14 inches, two at 50 inches by 14 inches, two at 54 inches by 14 inches and two at 66 inches by 14 inches, make an offer. Call 218-280-0330, 218-281-4024 or 218-280-0868.

Miscellany

COMMUNITY COOKBOOK – The Gazette needs more recipes for our Community Cookbook. Must be a current or former resident of the Red Lake County. Send as many as you like to PO Box 370, Red Lake Falls, MN 56750 or rlfgaz@gvtel.com. Call 253-2594 with questions.

THE GAZETTE NOW CARRIES – Quarter-fold-size envelopes for computer-generated greeting cards. The Gazette in Red Lake Falls, 253-2594.

COLOR COPIES – Now available at the Gazette in Red Lake Falls, 253-2594.

PRINTING – Check with the Gazette for all your printing needs. No job is too big or too small. The Gazette, 253-2594, Red Lake Falls, MN.

Carpet ETC. of St. Hilaire, MN
Flooring to Fit Every Lifestyle
Carpet, Vinyl, Ceramic, Laminat

Quality Flooring at a price you can afford.

310 Broadway • St. Hilaire, MN • (218) 964-5555 • M - F 9:30 & Sat 9-3 • Anytime By Appointment

We Buy Cars and Car Bodies
We Sell Welding Supplies
We Buy Aluminum Cans
We Sell New Steel - Structural and Sheet
We Buy Scrap Iron and Metals
Roll-Off Boxes Available

Evans Scrap & Steel, Inc.
218-681-3488 • Toll Free 1-800-906-3488
13203 190th St. N.E. • Thief River Falls, MN

Winter Hours:
7:30 - 4:30
Monday-Friday

Residual Materials, Inc.



We Buy . . .

- Aluminum
- Brass
- Copper
- Steel
- Stainless Steel

222 Red Dot Place, Grand Forks, ND 58203
(701) 746-9381
fax (701) 772-2008

SCHAFFER

ELECTRIC

BRIAN SCHAFFER
218-289-5430
CELLULAR

MIKE SCHAFFER
218-289-5431
CELLULAR

16483 120th Avenue SW
Red Lake Falls, Minnesota 56750
Office 218-253-2497

COMMERCIAL TRENCHING RESIDENTIAL FARM



Midwest Roofing
Residential and Commercial

Licensed • Bonded • Insured
FREE ESTIMATES

20061 Center St E
Thief River Falls, MN 56701

(218) 681-3879
(218) 686-4475

TR SALVAGE INC.

702 Dawn Ave.
Thief River Falls, MN 56701
218-681-8221 • 1-800-950-9917
Email: sales@trsalvage.com • Website: www.trsalvage.com

NEW AND USED FARM EQUIPMENT PARTS

Electrical
Contractor

Shop: (218) 253-4123
Home: (218) 253-4127

KEN'S ELECTRIC, INC.

Red Lake Falls, Minnesota 56750

"We Service Our Work"

Contact Us For All Your Electrical Needs!

Allen Remick - Cell: (218) 689-0313
Jason Knott - Cell: (218) 289-5104

Burns Welding & Repair

Portable, Commercial, Aluminum and Tig Welding
Custom Cattle Gates • Bale Rings
Farm and Trailer Repair • DOT Inspections • ATV Equipment

Shop: 218-964-5444 • Cell: 218-686-8327
burnsrepair@gvtel.com • www.burnswelding.net

✓ These Prices

1995 Chevy Lumina
4 door, White, 3180 ONLY \$1,650
1995 Plymouth Neon
4 door, 2.0, 4 cyl ONLY \$1,850
1995 Pontiac Sunfire
4 door, 4 cyl, blue ONLY \$1,950
1999 Jeep Cherokee Sport
4x4, White, 4.0 ONLY \$3,650
1999 Jeep Grand Cherokee Limited
4.0, 6 cyl ONLY \$3,995
1999 Ford E150 Window Van
46,550 miles, equipped with Rollex wheelchair lift, lowered floor, new cost \$38,000 SPECIAL \$11,750
2000 Chevy Lumina
4 door, 3100 eng., White, 124k SPECIAL \$2,650
22' Starcraft Aluminum Boat
3.8 inboard eng., Good on Gas \$3,850 OBO

D&S Sales & Service

Hwy. 32 North, Red Lake Falls, MN
(218) 253-2940 • (800) 253-2009
Please call to make sure I'm here!
DLR #21275

DON'S MACHINE SHOP
ASE CERTIFIED REBUILDERS
ALL GAS AND DIESEL ENGINES

•Automotive •Industrial
•Marine •Agricultural
•High Performance
•Vintage Auto
•Heavy Duty Diesel
CALL FOR ESTIMATE!
INSTALLATION AVAILABLE
FOSSTON, MN
218-435-6379 or
1-800-448-1518

DON'S

307 First Street East • TRF
Across from Pennington Square
SEWING & VACUUMS
Sales and Service • NEW & USED
Small Appliance Repair
Serving the area for 17 years
218-681-8664

Concrete Coatings & Repair

• Epoxy Coatings (colored chip & quartz)
• Decorative Concrete Overlays
• Concrete Polishing and Staining
• Concrete Densifier and Sealers
Any concrete area needing a new appearance with a seamless and easy to maintain finish.
• Shop/Garage and Basement Floors
• Commercial Kitchens and Retail Floors
• Patio, Driveway/Apron and Sidewalks
Contact: **Concrete Designs**
(218) 681-8004
E-mail: epoxy@mncable.net

KM Transmission

And Repair

Quality • Experience
Dependability • Honesty



Fair Prices

Its all just that simple. Keith Moen

Mon. - Fri. 8:00 am to 5:00 pm
Sat. by appointment

(218) 681-4250

616 Davis Ave. N, Thief River Falls

Late Model Auto Parts

-National Parts Locator-

Toll Free 1-888-560-5321

Bus: 218-964-5321

WE BUY PARTS CARS!

20 Bakers St., St. Hilaire, MN
Jeff Brouse & Brian Bugge, Owners

B & B Auto Recycling, Inc.

LUMBER AND Building Supplies



ASK ABOUT
OUR COMPLETE
BUILDING PLANS
SERVICES!

We're glad to help you with
any building problem you
may have.

**Oklee
Lumber, Inc.**
(218) 796-5131

SUBSCRIBE TO GAZETTE

Save at least \$23 annually over the newsstand price!

To subscribe just clip and fill out this form and bring it to the *Gazette* office at 105 Main Avenue in Red Lake Falls or mail to: The *Gazette*, PO Box 370, Red Lake Falls, MN 56750.

THE GAZETTE SUBSCRIPTION RATES . . .

In Red Lake County, \$29 a year In Minnesota, \$35 a year Out of state, \$39 a year

Enclosed is a check for \$ _____ Send the Gazette to . . .

NAME _____

ADDRESS _____

CITY _____ STATE _____ ZIP _____

Red Lake Electric Cooperative

Want Ad Order Form

Use this handy form to submit your want ads.

PLEASE PRINT.

Mail or bring your ads to the RLEC office by the tenth of the month. Commercial ads are 10¢ per word with a minimum charge of \$4 per insertion.

Member want ads are FREE. One want ad per member per month.

Please PRINT . . .

Your Name, Address and Phone Number. Mail with your power bill payment, if you prefer, or fax to 218-253-2630.

Surge protection: critical for sensitive electronics

Computers and other electronic equipment found in nearly every home and business today are quite susceptible to sags and surges in voltage and current. They may show up as minor voltage spikes, short power interruptions or current distortions that are difficult to find, even if you know where to look. Dealing with power quality concerns requires an understanding of surge protection equipment and a plan to protect sensitive electronic devices.

Lightning strikes to homes or nearby locations are one primary cause of damage to delicate electronic equipment. Other causes like voltage spikes and multiple grounding paths can also create problems. Even minor surges can

create a malfunction that requires the device to reset or possibly even cause permanent damage.

The surge protection system outlined in this article could apply to nearly any residential or commercial setting, as well as agricultural buildings.

A properly installed transient surge suppression system includes multiple levels of protection. Beginning at the site of the utility service entrance, protection is provided through each of the building's service panels, subpanels and individual circuits that supply electricity to delicate equipment. Each level of protection is designed to remove a portion of the surge not eliminated by the preceding level.

The last level of protection is

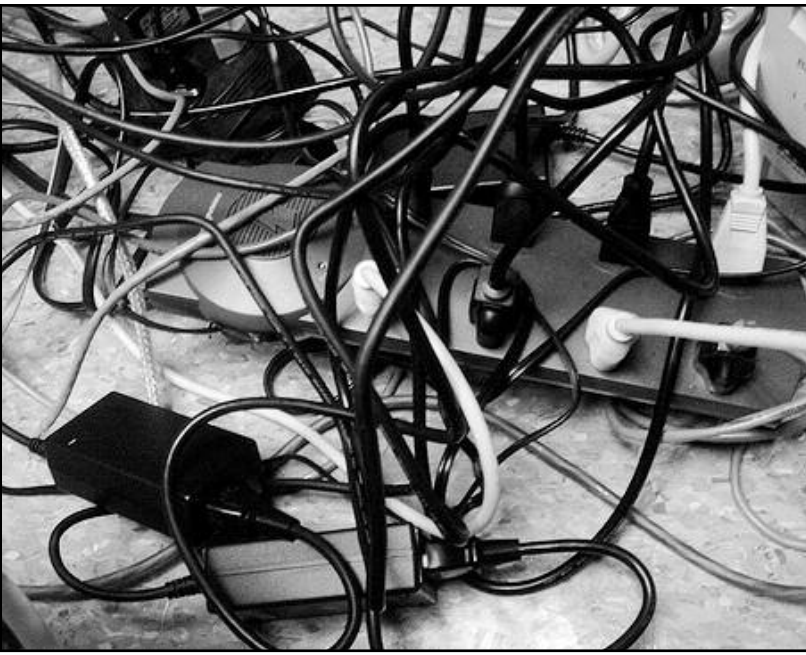
provided at the individual circuit. This is where the lowest level of harmful disturbances will be filtered out. An outlet strip with a quality surge suppressor provides this protection.

In practice, many buildings won't need all the levels of protection. But providing protection only at the circuit level is not sufficient to guard against high-energy transient surges.

Should the building contain critical electronics that are affected by any change in current or voltage levels, the best is to provide protection at all levels.

As a minimum level of protection, experts recommend the following components be included in any surge protection system:

- Lightning arrestor on the main service pole (this is already provided by RLEC).
 - Adequate grounding for service entrance and main service pole.
 - Surge suppressor for the building electrical service panel.
 - Secondary arrestor for the individual circuit to which the electronic equipment is attached.
- To learn more contact Red Lake Electric Cooperative or your local electrician. Remember, no amount of surge protection will guarantee absolute reliability. But by understanding the causes of power quality problems and the components needed in a well-designed protection system, you will be able to avoid most costly losses in equipment and income.



May is Electrical Safety Month; avoid electrical hazards

We've all seen it: Too few electrical outlets in your office means that your computer, printer, monitor, scanner, CD player, lamp, cell phone and iPod charger are all plugged into one inexpensive, overloaded power strip. It's pretty unsightly, but did you know that the practice is also dangerous?

Overloaded electrical circuits pose both an electrocution and fire hazard. While we can't always control the number of outlets in our offices, the Electrical Safety Foundation International recommends some steps to stay safe from electrical hazards:

- If you must use a power strip, use a name-brand product from a reputable retailer. Low-quality or counterfeit power strips may contain wiring that isn't adequate to carry the load.
- Place power strips where there is plenty of air circulation to disperse heat.
- Do not attempt to plug grounded (three-prong) cords into ungrounded (two-slot) outlets.

- Do not bind, kink or knot electrical cords.
 - Never run power cords under rugs or where chairs can rollover them.
 - Keep cords close to a wall to avoid trip hazards.
 - Keep all non-critical electrical items unplugged until you need to use them.
 - Consider charging battery-operated devices in another area.
- If your computer screen flickers or fades, or you detect a burning smell, power down and immediately contact the building engineer. If you work from home, have a licensed electrician conduct an electrical inspection.
- For more electrical safety information, go to www.electrical-safety.org.
- The Electrical Safety Foundation International (ESFI) is North America's only non-profit organization dedicated exclusively to promoting electrical safety in the home and workplace.

Adopt a Highway program reaches 20th anniversary

This year marks the 20th anniversary of Minnesota Department of Transportation's Adopt a Highway program, a public service campaign where community groups, churches, businesses and individuals pick up litter along Minnesota highways.

"The program enables environmentally conscious people to make a personal contribution to a cleaner environment," said Jan Ekern, Statewide Adopt a Highway coordinator. "Thanks to these dedicated volunteers and their organizations, our department can use the resources that would have been used to pick up litter for highway improvement and safety projects."

In the 20 years since its introduction, the program has saved the state of Minnesota millions of dollars.

"Adopt a Highway volunteers pick up 26,000 tons of litter per year along Minnesota highways," Ekern said. "This saves Mn/DOT an estimated \$5 million annually."

There are more than 12,000 miles of state highway in Minnesota of which 9,800 miles are adopted. Currently, there are an estimated 4,500 statewide groups and 45,000 volunteers registered.

"With April 22 marking the 40th anniversary of Earth Day, it's outstanding to see the number of people willing to make a difference in

this environmentally altering effort," Ekern said. "Still, there are many more miles of highway waiting to be adopted."

By joining the Adopt a Highway program, groups agree to:

- Adopt a highway for a minimum of two years.
- Select a segment of highway approximately two miles in length.
- Pick up litter on both sides of a highway.
- Pick up litter as often as needed spring through fall—usually two to three times a year. The spring pickup should be done in April or May before the first grass mowing.
- Notify Mn/DOT after every pickup.

In return, Mn/DOT will:

- Help a group select a highway to adopt—roads that have heavy traffic or are inaccessible to pedestrians are not eligible.
- Provide retroreflective safety vests, trash bags and safety information. A safety training video is available.
- Remove filled bags and large, heavy or hazardous items from roadsides.
- Erect a sign along a group's section of highway to recognize their commitment to a cleaner environment.

To find out how to get involved, visit www.dot.state.mn.us/adopt or call Ekern at 651-366-3548.

Outdoors Extra will bring new entertainment to state parks

A new program series known as Outdoors Extra will provide a lengthy list of things to see and do at Minnesota state parks, trails and recreation areas this summer. More than 50 events, between June 6 and Sept. 5, will feature known entertainers, musicians, storytellers and outdoor skill-building experts.

"It is no exaggeration to say that everyone can find something enjoyable in this special program series," said Eric Peltó, interpretive naturalist and program coordinator. "We especially hope that people who haven't been to Minnesota state

parks or trails before, or those who haven't visited in a while, will find new reasons to check them out."

In its pilot year, the new program is offering a wide variety of opportunities for all ages. Examples include: for adventure seekers: sea kayaking, fly fishing, or rock climbing; for animal lovers: the chance to see live elk, eagles, owls and reptiles; for creative types: live music under the open sky, or workshops on nature photography and poetry; and for history buffs: dramatic stories about the legends of Minnesota and much more.

All of the events are free, but a vehicle permit is necessary to enter Minnesota state parks and recreation areas. Permits can be purchased at the parks. There is no charge to use Minnesota state trails.

For more information about Outdoors Extra and other special events and programs at Minnesota state parks and trails, visit www.mndnr.gov/parksandtrails or contact the DNR Information Center, info.dnr@state.mn.us or 888-646-6367.

NEW HOLLAND.
IT'S A NEW WORLD.

FORWARD THINKING
EARLY BUYER REWARDS

0% Interest
Financing available

Low Interest on Used Equipment

From the first cut to the last bale, New Holland has you covered with reliable equipment that brings in your valuable hay and forage crops more quickly and efficiently than ever before. Choose from Discbine® and Haybine® mower-conditioners, Speedrower® self-propelled windrowers, forage harvesters, Roll-Belt™ round balers and large and small square balers. Order your 2010 model New Holland equipment NOW and get these advantages:

THE BEST PRICE OF THE SEASON
THE LATEST HIGH-PERFORMANCE TECHNOLOGY
A CUSTOM ORDER FROM THE FACTORY

TITAN Your Solutions Dealer
MACHINERY

Hwy. 59 North Thief River Falls, MN
www.titanmachinery.com
Toll Free: 1-800-888-2744
Phone: 218-681-1423

NEW HOLLAND
AGRICULTURE

Stop in and see Cecil or Mark for all your equipment needs

© 2009 CNH America LLC. New Holland is a registered trademark of CNH America LLC. R7C

AUTO PAY OFFERED BY RLEC

Red Lake Electric Cooperative is pleased to offer you Auto Pay. Now you can have your monthly energy bill paid automatically from your checking or savings account. You can receive the Auto Pay service by completing the Auto Pay sign-up sheet and returning it to Red Lake Electric Cooperative.

The Auto Pay service is free of charge. Not only is this service free, you will eliminate the expense of writing a check, postage to mail your payment and no more late payment penalties because your bill will be paid on time, every month, for you.

Your payment will be automatically made for you on the 5th of each month. If the 5th falls on a weekend or holiday, the payment will be made on the next business day. You will continue to receive your monthly energy bill as you have in the past, indicating the amount that will be withdrawn from your bank account. The proof of your payment will appear on your bank statement and your next month's energy bill statement.

Continue to pay your monthly bill until you are notified on your bill that the Auto Pay has been set up for you.

If you have any questions about the Auto Pay please call RLEC at 800-245-6068 or 218-253-2168.

AUTO PAY SIGN-UP SHEET

I authorize Red Lake Electric Cooperative (RLEC) and the bank listed below to initiate variable entries to my checking or savings account. This authorization remains in effect until I notify RLEC in writing to cancel it in such time as to allow RLEC to act on it.

RLEC ELECTRIC ACCOUNT # _____

NAME (PRINT) _____

ADDRESS _____

TELEPHONE # _____

NAME OF FINANCIAL INSTITUTION _____

CHECKING ACCOUNT # _____

SAVINGS ACCOUNT # _____

SIGN HERE TO AUTHORIZE _____

Please return this authorization form with a blank, voided check to:
Red Lake Electric Cooperative, P.O. Box 430, Red Lake Falls, MN 56750

Red Lake Electric Cooperative, Inc.
One of the Minnkota Power Systems

Phone 218-253-2168
Toll-free 1-800-245-6068
Fax 218-253-2630
After-hour outage 218-253-2200
Office hours Monday-Friday, 8:00-4:30
E-mail: redlake@minnkota.com
Web site www.redlakeelectric.com

P. O. Box 430 • 412 International Drive SW • Red Lake Falls, MN 56750-0430