



Volts and Jolts

Published monthly for the members of
RED LAKE ELECTRIC COOPERATIVE, Inc.

One of the Minnkota Power Systems

SERVING THE FOUR-COUNTY AREA OF MARSHALL, PENNINGTON, RED LAKE AND POLK

VOL. 45 – NO. 10

RED LAKE FALLS (RED LAKE COUNTY), MINNESOTA 56750

AUGUST 2010

Time is running out for claiming energy efficiency tax credits

By Magen Howard

Only four months remain to tackle home improvement projects if you want to take advantage of energy efficiency tax credits authorized under the federal stimulus bill. Measures that qualify include replacing windows, doors, or roofs with materials that reduce your home's heat loss or gain; adding insulation; replacing certain air conditioners; and installing air-source heat

pumps, hot-water boilers, and biomass stoves.

"We want to make sure our members know about these tax credits and can take advantage of them before they expire on December 31, 2010," stresses Roger Johanneck, general manager. "This is an incredible opportunity for folks to invest in residential energy efficiency and see energy bill savings right away."

You can recover 30 percent—up to \$1,500—of costs associated with buying and installing heating, ventilation and air conditioning systems and biomass stoves. Installation costs are not covered for windows, doors, roofing, and insulation.

ENERGY STAR, a joint program of the U.S. Department of Energy (DOE) and the U.S. Environmental Protection Agency, provides guidelines on what qualifies for the tax credit at www.energystar.gov/taxcredits. Tax credits are especially beneficial as they directly reduce, dollar for dollar, any taxes you owe.

"These are tough times, and we know it's important for our members to keep their monthly electric bills as low as possible," explains Johanneck. "Making home energy efficiency upgrades offers a great way to save energy and money, and these tax credits can help make that a reality."

If you're interested in renewable energy, the government also offers a renewable energy tax credit that expires Dec. 31, 2016. That credit covers 30 percent of the cost of materials and installation for solar panels, solar water heaters, and geothermal heat pumps, for both new and existing homes. But check with Red Lake Electric Cooperative for advice on what system makes sense for your home.

Be sure to keep your receipts and your Manufacturer's Certification State-

ment (a signed statement from the manufacturer certifying that the product or component qualifies for the tax credit) for your records. Then claim the credit on your 2010 taxes using IRS Form 5695.

"In addition to the tax credits, Red Lake Electric offers rebates on several energy efficient heating and cooling measures," stated Johanneck. To learn more about these measures visit the cooperative website at www.redlakeelectric.com or call the cooperative office

at 218-253-2168 or 800-245-6068.

Source: ENERGY STAR, Database for State Incentives for Renewables & Efficiency

Magen Howard writes on consumer and cooperative affairs for the National Rural Electric Cooperative Association, the (4414001.03 Elmer C. Nelson) Arlington, Va.-based service arm of the nation's 900-plus consumer-owned, not-for-profit electric cooperatives. Megan McKoy-Noe contributed to this article.

4-H'ers receive awards

Each year, Red Lake Electric Cooperative sponsors awards for 4-H livestock exhibitors at area county fairs. Pictured are 4-H'ers who won awards at the 2010 Pennington County and Marshall County Fairs.

Additional pictures appear on page 6



Marshall County Extension Service photo.

The Grand Champion sheep senior showmanship award was won by Jena Garthus of Newfolden at the 2010 Marshall County Fair. This award is sponsored by Red Lake Electric Cooperative. Jena is the daughter of James and Karin Garthus and is a member of the New Maine 4-H Club. She also won a state fair trip with her sheep.

Operation Round Up® grant applications are due Sept. 8

Organizations involved in community projects and charities are encouraged to apply for funds from Operation Round Up at this time. Completed grant applications are due in the Red Lake Electric Cooperative (RLEC) office by Sept. 8.

Operation Round Up is a program adopted by RLEC headquartered in Red Lake Falls. Customers choosing to "round up" their monthly electric bill payment provide funds for this effort. More than 85 percent of RLEC members now (1111001.02 Timothy J. Nelson) choose to contribute pennies each month to enhance their communities.

Funds will be donated primarily to nonprofit organizations to help fund specific projects or programs. Since the program began in 1993, \$345,000 has been granted to community organizations and charities. Money is donated for the betterment of the community

within the outside service area boundaries of RLEC.

The Red Lake Electric Trust Board of Directors determines grants. Board members are Van Swanson, Thief River Falls; Bonnie Cote, Trail; Randy Knutson, Newfolden; Roger Johanneck and Bonnie Christians, Crookston.

To apply for Operation Round Up grants organizations should contact the RLEC office in Red Lake Falls at 218-253-2168 or 800-245-6068. A short application must be completed and submitted along with a financial statement from the organization. The grant application form is available on the Cooperative's Web site: www.redlakeelectric.com.

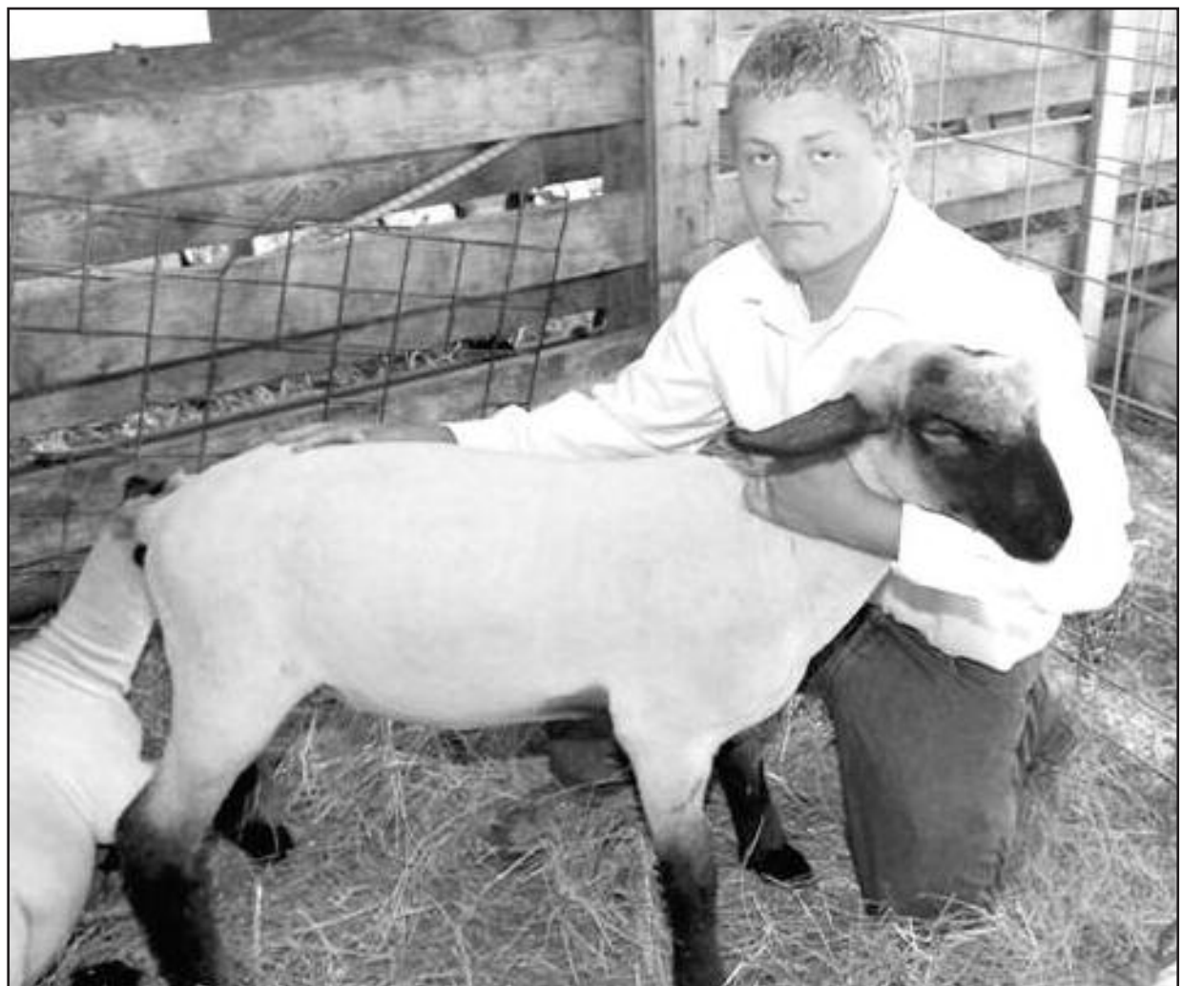
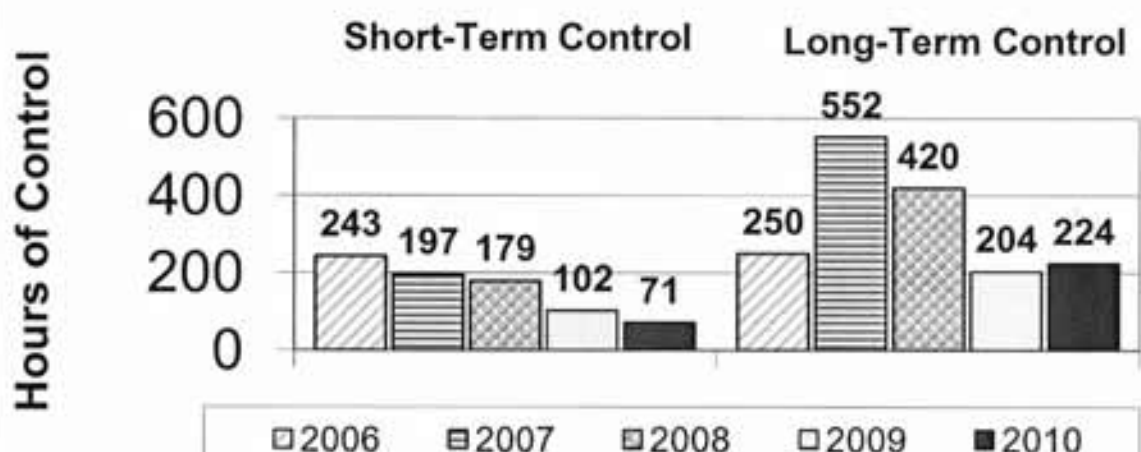
For more information contact Roger Johanneck, general manager of RLEC, at 253-2168 or 800-245-6068.

QUICK TAKES

A look at some statistics from your Red Lake Electric Cooperative

The chart below shows the amount of control time for Red Lake Electric Cooperative's Off-Peak customers the past five heating seasons. Even though it is still August and winter is a ways off, now is the time to get your heating system checked over and in working order so you are ready when cold weather and load control arrives. The fluctuation of wind energy output, the availability of baseload generation, cold temperatures and the availability of economical energy from the power pool all have an impact on the hours of load control for your Off-Peak heating system.

OFF-PEAK CONTROL HOURS Past five heating seasons



Thief River Falls Times photo.

Travis Dagen of Thief River Falls was presented the lamb rate-of-gain award at the 2010 Pennington County Fair. His lamb averaged a gain of over .91 pounds per day. Travis is the son of Wes and Dawn Brinkman and is an independent 4-H'er. The rate-of-gain award is sponsored by Red Lake Electric Cooperative.



Manager's Comments

by Roger Johanneck



Heating season is not that far away

I heard someone once describe Minnesota as the land of two seasons, winter and construction; a slight revision from the land of four seasons they taught to us in grade school.

Judging by the amount of "be prepared for winter" reminders we pass on to you at our membership meetings and in the Volts and Jolts, you might wonder if we here at Red Lake Electric Cooperative believe in a variation of the two season concept; namely Winter and Preparing for Winter. I know, it takes some effort to get motivated about preparing for winter (4422021.01 Audrey S. Miller) in the middle of August but, as we all know, the August heat won't last and you'll need to have a reliable heating system in place come fall.

The cool, un-August like temperatures we woke to this morning had me thinking about more than a furnace. Fall, my favorite time of year and hunting, one of my favorite pastimes came to mind; but that's another story. The cool temps this morning however, are a good reminder that the heating season will be here before you know it and now is a good time to prepare for it.

Based on expected energy demands for the coming winter and scheduled power plant maintenance, members with Off-Peak heating systems should expect an increase in load control hours from what we experienced the past year.

The Quick-Take graph printed

on the front page, gives members a history of control times for the past five years. Members with Off-Peak heating systems should be ready for control times any month during the heating season; not just during the extreme cold temperatures of mid-winter.

The variable output from Minnkota's wind energy resources, power plant availability, cold temps and the supply of economical energy in the Power Pool all influence the amount of load control hours by Minnkota Power Cooperative. This October, Minnkota's Young 2 generating unit will be down for a scheduled maintenance and that will most likely require some periods of load control early on in the heating season.

Some other items to consider and questions to ask as you prepare for the upcoming winter: 1) Did you fuel up your automatic back-up heating system? Summer fuel prices are generally better than winter pricing. 2) Did you run both your electric and back up heating system to make sure they are both operational? 3) When is that last time you had your backup system serviced? Maybe it's time to get a reliable service technician to service and fine tune your heating system. 4) Does your backup system adequately keep all areas of your home warm?

Federal tax incentives and rebates from Red Lake Electric Cooperative make this year a smart

time to replace an aging heating system with one that is more efficient and one that can do the job for the whole house.

If you would like to talk to us about service work on your heating system or an (4432012.01 Emil Harbot Jr.) evaluation of a new, more efficient heating system that qualifies for the Federal Tax Credit or a rebate from Red Lake Electric Cooperative; give us a call- we can help you with both.

Even though it is August, it is a smart time to get ready for winter; it won't be long now, and you'll be relying on that heating system to keep you warm.

Closed Labor Day

Red Lake Electric Cooperative's headquarters will be closed Monday, September 6 in observance of Labor Day.

In case of an electrical outage or emergency call the after-hour phone number 218-253-2200.

Have a safe Labor Day weekend.

GOPHER STATE



ONE CALL

Call before digging!
It's the law!

1-800-252-1166



Report from the Office

by Shirley Bregier

Take advantage of the special services we offer

As each day passes it feels more and more like fall. It seems like we were just cleaning the snow off the sidewalk and here we are looking forward to the fall season. Before we know it school will be back in session.

The new school season brings new changes for many people. If you are a young adult going off to college or starting your career and living away from your parent's home for the first time there are a few things you need to know when you call Red Lake Electric your first time and request electric service.

You will be required to pay a membership fee and a security deposit equal to two months worth of electricity unless your parents are a member of the Red Lake Electric with good credit and they are willing to sign a letter of guarantee of payment for your first 12 months of energy bills.

If you are going to be sharing an apartment or house with others please include all responsible parties on the membership application. This way the responsibility for paying the electric bill doesn't fall on just one person. If possible you should read the meter jointly with the landlord at the time you take

over responsibility for electricity.

Ask the landlord if there are other buildings that are metered through the meter that you would be billed for. This way you can work out a payment agreement with the landlord so you are not faced with an unexpected expense.

You should also call RLEC to see what the average bill at this service has been over the last 12 months. This way you can plan for this expense.

You should contact the Red Lake Electric before you move in and also when it gets close to the date you will be moving out. This is necessary for the owners of the rental property also. It is necessary to have the information as soon as possible so we have time to contact both parties.

The electric bill does not transfer from the owners name to the renter until all required fees are paid so the sooner we can start the transaction the better chance of getting all fees paid by the time the renter moves in.

Win \$100

Red Lake Electric has been offering Auto-Pay for several years and about one third of our customers use this service. Auto-Pay is a great way to pay your electric bill.

From the Mail Bag

Dear RLEC:

Thank you for donating the top rate of gain trophy and cash money award to the 2010 Pennington County Fair. My steer weighed 770 pounds in February and 1290 pounds at the fair.

Thanks again,
Malena Rupprecht
Thief River Falls

Dear RLEC:

Thanks so much for sponsoring the Minnkota power plant tour this summer. We gained a better understanding of and greater appreciation for where our electricity comes from.

Our visit at Ashtabula Wind Energy Center was informative and our trip into the lignite coal mine to see the huge equipment working was awesome. All accommodations were comfortable and it was nice to leave the driving to someone else.

It was well worth the investment of our time and money to take part in this educational tour and we encourage everyone to consider participating the next time it's offered.

Thanks again,
The Bernard Blawat Family
Thief River Falls

After-Hours
Outage Phone
218-253-2200

Informational Web Sites

The following is a list of Web sites that can provide information and education in reference to electrical safety and energy conservation. These Web sites are listed as links on Red Lake Electric Cooperative's Web site at www.redlakeelectric.com.

- Electrical Safety Foundation International: www.esfi.org
- Alliance to Save Energy: www.ase.org
- US Environmental Protection Agency: www.epa.gov/greenhomes
- Energy Star: www.energystar.gov
- Minnesota Safety Council: www.minnesotasafetycouncil.org
- Safe Electricity: www.safeelectricity.org
- Lighting Controls Association: www.aboutlightingcontrols.org

Mission Statement

It is the mission of Red Lake Electric Cooperative to enhance the quality of life for people of our service area by consistently providing quality electric service and other valued services while holding our employees, our community and our environment in high regard.



Red Lake Electric Cooperative, Inc.

One of the Minnkota Power Systems

WE PROUDLY PRESENT TO YOU

The Red Lake Electric Cooperative Customer Service Guarantee



It's short and simple! Red Lake Electric Cooperative employees will meet or exceed your expectations of friendly, courteous service and will meet any commitments they make to you. If your expectations of the service provided by our employees is not met, please contact me at the Red Lake Electric Cooperative office, 253-2168. You will receive \$5.00 for your inconvenience and our promise to serve you better in the future. Our employees' commitment to quality customer service makes this guarantee possible.



Red Lake Electric Cooperative, Inc.

One of the Minnkota Power Systems

ROGER JOHANNECK
General Manager



Red Lake Electric
Cooperative, Inc.

One of the Minnkota Power Systems

Things you should know about your electric service

BILLINGS AND COLLECTION

You will receive your energy bill on or near the 20th of each month.

Payment of your monthly energy bill is due on the 20th of the month. You may pay your bill in person at RLEC during office hours, use the 24-hour drive-up drop box located next to the RLEC office, by Auto Pay, or by mail. Payment must be in the office, drop box, Auto Pay, or in the mail, as evidenced by the postmark, by the 5th day of the following month to avoid a late payment charge. A 1 1/2% monthly late payment charge will be computed on delinquent energy bills, the minimum late payment charge will be \$1.00.

If your payment is not received by the 15th of the month, a final notice of disconnection statement will be included on your following bill. The final notice statement will notify you when your electric service will be disconnected if the delinquent amount remains unpaid. If an employee is sent to disconnect your electric service, a \$50 collection fee will be charged to your account, even if you pay the collector.

To have a disconnected service reconnected, all amounts owing, a \$50 reconnection fee, and a security deposit must be paid. If the service must be reconnected after normal working hours, a \$100 reconnection fee must be paid.

BAD CHECKS

A \$15 charge will be levied each time a check is returned because of nonsufficient funds, account being closed or payment stopped.

OUTAGES

In case your electricity goes out, please do the following:

1. Check your fuses or breakers at the yard pole or meter pedestal.
2. Call your neighbor to see if they are out of electricity also.
3. Call the RLEC office (218-253-2168 or 1-800-245-6068) during working hours or 218-253-2200 after hours. We will accept collect calls for outages only.

METER TESTS

RLEC has a schedule in place to have its meters periodically tested for accuracy. Results from these tests show that meters generally slow down with age; however, if you think that your meter is recording too much usage, RLEC will test it for accuracy. You must pay a test fee in advance of the test. If the meter test shows that the meter was inaccurate, the test fee will be refunded to you.

STOPPED METERS

If you find your meter has stopped and you are using electricity, please contact the office immediately so we can replace it. Average consumption will be billed to the member for the time the meter was stopped so there is no advantage in not reporting a stopped meter.

METER READINGS

An automated meter reading system is utilized to obtain monthly meter readings. Although the system is normally reliable, there is always a chance that the correct reading has not been transmitted to the office for billing. Customers should periodically read their meter and compare it to the reading on the billing statement. If the actual reading is not close to the billing statement reading, please call the office.

GENERAL SERVICE RATES

Facilities charge variable \$19 to \$25 month
First 500 KWH9.0¢ Kwh
Over 500 KWH (April-Dec.)7.2¢ Kwh
Over 500 KWH (Jan.-Mar.)8.0¢ Kwh
Multiphase users add \$18/month cost of service charge.

Standby, \$10/month (meter disconnected but the power line retained; standby is not available on services larger than 15 KVA transformer capacity).

Security light, \$7/month, high pressure sodium, \$8/month, mercury vapor; water heater flat credit, \$5/month (on January-April billing); off-peak equipment charge, \$4.50/month per heat meter; off-peak electric heat rate, 4.2¢/kWh long-term control, 6.2¢/kWh short-term control.

RED LAKE ELECTRIC COOPERATIVE, Inc.

VOLTS & JOLTS

(USPS 663-400)

Published monthly by the Red Lake Electric Cooperative, Inc., 412 International Drive SW, Red Lake Falls, Minnesota 56750-0430, in the interest of its members and others. Periodical Postage Paid at the U. S. Post Office in Red Lake Falls, Minnesota 56750. POSTMASTER, SEND ADDRESS CHANGES to Volts & Jolts, c/o Red Lake Electric Cooperative, Inc., P. O. Box 430, Red Lake Falls, Minnesota 56750-0430. E-mail: redlake@minnkota.com

OFFICERS AND DIRECTORS

PRESIDENTKelly Lundeen
VICE PRESIDENTBonnie Christians
SECRETARY-TREASURERMark Hanson
DIRECTORSRobert Olson, Robert Finstad,
Steven Linder, Colette Kujava,
Randy Versdahl, Peter Mosbeck

Subscription Rate\$2.50 per year

NOTICE

Hidden within the text of the articles on pages 1, 2, 3 and the back page of this issue of the Volts & Jolts are the names and account numbers of five RLEC members. They will appear within the articles in parenthesis as such (99-99-99-999-99 Roger P. Member). If you find your name and account number, clip it out and send it with your next payment. You will be credited with \$5 on your electric bill.

Recipe corner

Breezy Brownies

- 1 cup sugar
- 1/2 cup butter or margarine
- 4 eggs
- 1/8 tsp. salt
- 3/4 cup chocolate syrup
- 1 cup plus 1 tbsp. all-purpose flour
- 1 cup chopped pecans

- Frosting:
- 1-1/2 cup sugar
 - 6 tbsp. butter or margarine
 - 1/3 cup milk
 - 1/2 cup semisweet chocolate chips
 - 1/2 cup chopped pecans

In a mixing bowl, cream sugar and butter. Add eggs and salt; beat well. Stir in chocolate syrup, flour and nuts. Pour Into a greased 13-in. x 9-in. x 2-in. baking pan. Bake at 350 degrees for 20 minutes. Cool for 15 minutes. For frosting, combine sugar, butter and milk in a saucepan. Bring to a boil, stirring frequently. Boil for 1 minute; remove from the heat and stir in chocolate chips until melted. Beat to spreading consistency, about 3 minutes. Add pecans; frost warm brownies. Yield: 2 dozen.

Nutty Cheese Cake

- 1 cup (4 oz) shredded cheddar cheese
- 3/4 cup butter or margarine, softened
- 3/4 cup grated parmesan cheese
- 1/4 cup chopped salted peanuts
- 1/4 cup dijon mustard
- 1 to 2 garlic cloves

In a mixing bowl, combine all ingredients; beat on medium until blended. Serve on crackers. Store in the refrigerator. Yield: 1-3/4 cups.

Really Rocky Road Brownies

- 8 squares (1 oz each) unsweetened chocolate
- 1-1/2 cup butter or margarine
- 6 eggs
- 3 cups sugar
- 1 tbsp. vanilla extract
- 1-1/2 cup all-purpose flour
- 1 cup chopped walnuts (optional)

- Topping:
- 2 cups miniature marshmallows
 - 1 square (1 oz) unsweetened chocolate, melted

In a heavy saucepan over medium heat, cook and stir chocolate and butter until melted; cool slightly. In a mixing bowl, beat eggs for 2 minutes. Gradually add sugar; beat until thick, about 3 minutes. Stir in chocolate mixture and vanilla. Fold in flour and nuts if desired. Pour into two greased and floured 9-in. square baking pans. Bake at 350 degrees for 25-30 minutes or until a toothpick inserted in the center comes out with moist crumbs (do not overbake). Sprinkle each pan with 1 cup of marshmallows. Broil until marshmallows are golden brown, about 30-60 seconds. Drizzle with melted chocolate. Yield: 4 dozen. Editor's Note: For easier cutting, refrigerate brownies for several hours.

Strawberry Pie

- 1-1/4 cups sugar
- 1 tbsp. cornstarch
- 1 cup water
- 1/ pkg. (3 oz) strawberry gelatin
- 3 tbsp lemon juice
- 1 quart fresh strawberries, halved
- 1 pastry shell (9 in.), baked
- Whipped topping (optional)

In a saucepan, combine the sugar and cornstarch. Stir in water until smooth. Bring to a boil; cook and stir for 2 minutes. Remove from the heat. Add the gelatin and lemon juice; stir until dissolved. Allow to cool to room temperature, about 30 minutes. Add strawberries and stir gently to coat. Spoon into pastry shell. Chill until set, about 3 hours. Serve with whipped topping if desired. Yield: 6-8 servings.

Lemon Poppy Seed Cake

- 1 pkg (18-1/4 oz) lemon cake mix
- 1 pkg (3.4 oz) instant lemon pudding mix
- 3/4 cup warm water
- 1/2 cup vegetable oil
- 1 tsp. lemon extract
- 1 tsp. almond extract
- 4 eggs
- 1/3 cup confectioners' sugar
- Juice of 1 lemon
- Additional confectioners' sugar (optional)

In a mixing bowl, combine cake and pudding mixes. Add the water, oil and extracts. Beat for 30 seconds on low speed. Add eggs, one at a time, beating well after each addition. Beat for 4 minutes on medium speed. Stir in poppy seeds. Pour into a greased 10-cup fluted tube pan. Bake at 350 for 50-60 minutes or until a toothpick inserted near the center comes out clean. Cool in pan 10 minutes before inverting onto a serving plate. Combine confectioners' sugar and lemon juice; drizzle over the warm cake. Cool. Dust with confectioners' sugar if desired. Yield: 12-16 servings.

Fried Green Tomatoes

- 1 cup cornmeal
- 1 tbsp. flour
- Salt and pepper to taste
- 4 or more green tomatoes
- Vegetable oil
- 1/2 cup grated parmesan cheese

Mix together cornmeal, flour, salt and pepper. Wash and slice the tomatoes. Dip tomato slices in the cornmeal mixture. Fry in medium skillet with vegetable oil until golden brown on both sides. Sprinkle with parmesan cheese immediately upon removing from pan. Makes approximately 4 to 6 servings.

NOTE: These make a great appetizer or salad sprinkled with Feta cheese on top and drizzled with Ranch dressing. They also make a wonderful sandwich on toasted bread with sliced smoked Gouda cheese and Thousand Island dressing spread on the bread.

Home safety checklist for older adults

Last year, more than 1 million people 65 years and older were treated in hospital emergency rooms for injuries associated with accidents at home. Since most of these episodes resulted from a lack of maintenance, walk through your home and use the following checklist to spot possible safety hazards. If you notice a potential problem, arrange for it to be fixed immediately to prevent accident or injury.

- Kitchen: Make sure all of your appliances carry an Underwriters Laboratories, Inc. (UL) seal, which means the item was tested and found safe to use. Check electrical cords for fraying or cracking; step stools for splitting or cracking; and throw rugs for tripping hazards like bumps and turned-up corners.

- Living room: Check rugs and runners, electrical cords, lamps, and other lighting. Inspect the fireplace and chimney for fire hazards, and make sure all passageways are clear.

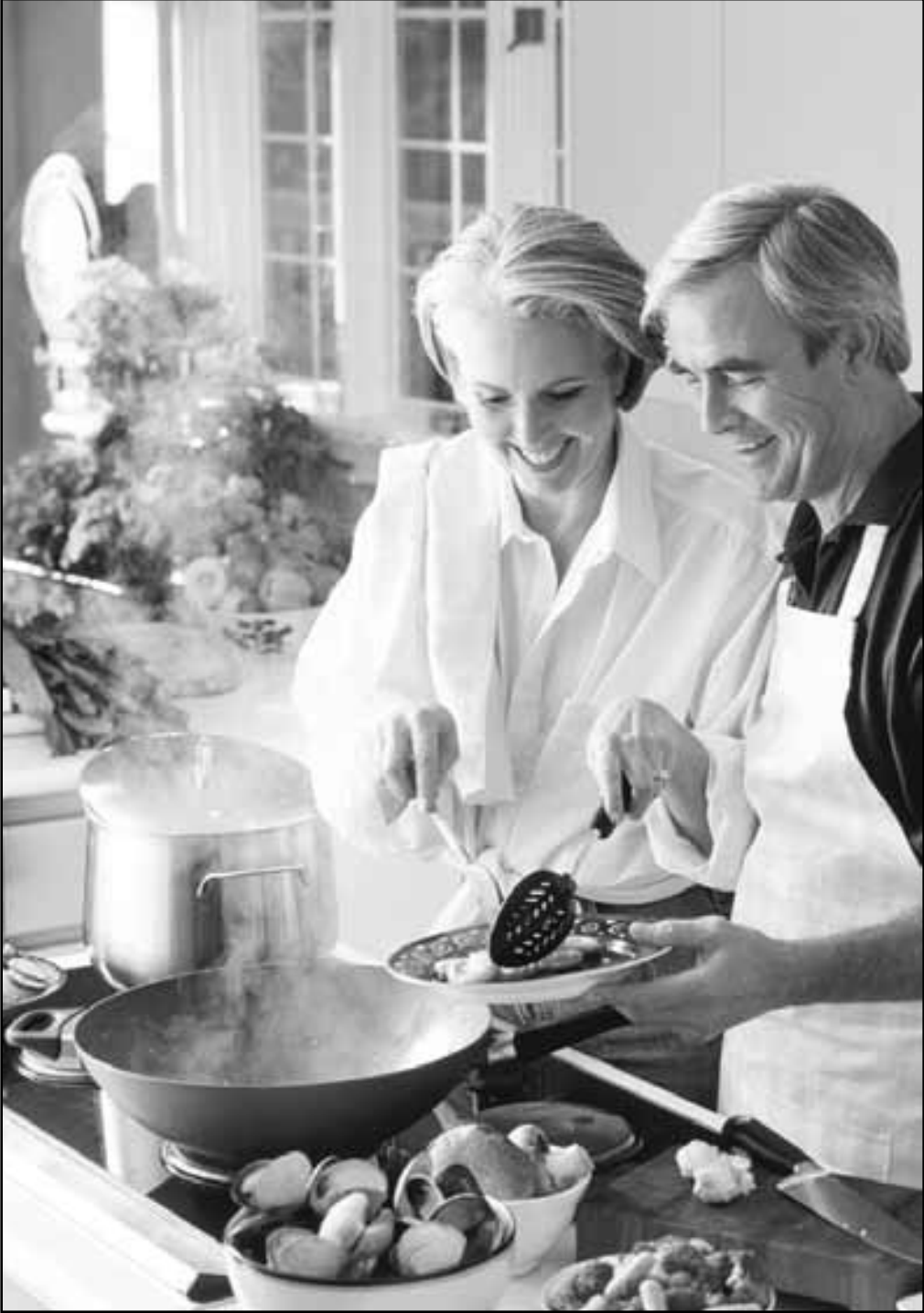
- Bathroom: Make sure small appliances are marked with a UL seal. Check the bathtub, shower, rugs, and mats for slipping hazards and inspect cabinets for safe storage of medications.

- Bedrooms: Examine rugs, runners, electrical and telephone cords, and make sure the area around the bed is clear of items that could cause you to trip.

- Basement/garage/workshop: Make sure all power tools bear the UL mark. Check fuse and breaker boxes for possible malfunction and shock and fire hazards. Inspect extension cords and cords on tools and lawn and garden supplies. Check for proper ventilation and make sure flammable liquids are stored properly.

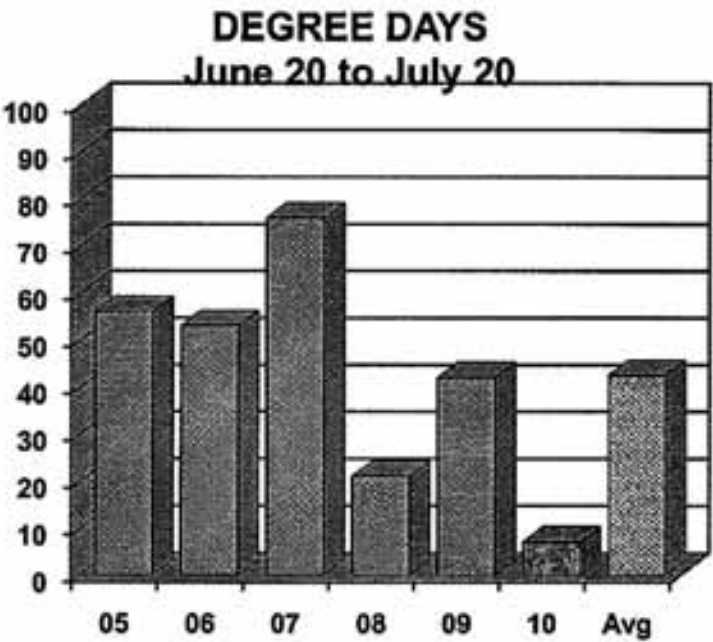
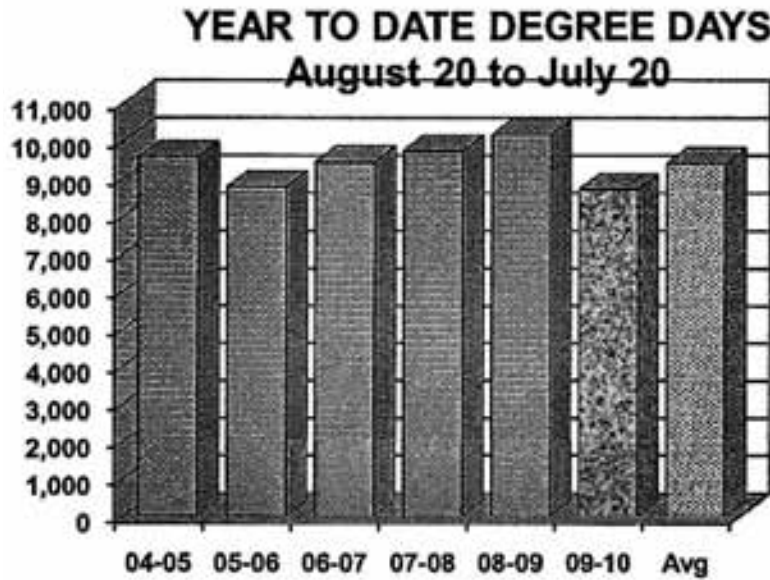
- Stairs: Make sure there's proper lighting on and around stairways. Examine handrails and steps for possible defects or weaknesses, and test stair coverings for possible tripping hazards.

Source: Underwriters Laboratories, Inc.



DEGREE DAYS

To determine degree days, you must calculate the daily mean temperature for the time period you are measuring. Degree day computation is based on the assumption that a building does not require any heat if the outside temperature averages 65 degrees during a 24-hour period. To obtain a degree day figure, the high temperature and the low temperature for the day are added and the total divided by two. That figure is then subtracted from 65. For example, if the high temperature was 30 degrees and the low temperature 10 degrees, the figure would be 30+10=40; 40/2=20; 65-20=45. This would be a 45-degree day. The higher the degree day figure, the more heat required to warm your home.



Light your way to savings

One of the lowest cost and most immediate ways to conserve electricity and to lower your monthly bill is to install compact fluorescent (CFL) light bulbs. These Energy Star-rated bulbs use about 75 percent less electricity than incandescent bulbs and will last up to 10 times longer. That can mean a savings of up to \$30 over the life of the bulb.

Additionally, CFL bulbs produce about 75 percent less heat than incandescent bulbs. That means they are safer to operate and can reduce energy costs for home cooling.

If you aren't replacing all the incandescent bulbs in your home at once, and few people do, be selective with CFL replacements. Install CFLs in fixtures that are "on" the most. They will save you the most electricity and will give you the best return on your CFL bulb dollars spent. For best efficiency, CFLs should be "on" for at least 15 minutes at a time.

When CFL bulbs came on the market a few years ago, only a few standard sizes were available. Some lamps or fixtures would not accommodate CFL bulbs at that time. (7903002.03 Wayne G. Brekke) Today, many sizes and shapes of CFL bulbs can be purchased, accommodating almost any fixture or lamp.



CFLs perform best in open fixtures that allow airflow, such as table or floor lamps, wall sconces and outdoor fixtures. For recessed fixtures, it is better to use a reflector CFL than a spiral CFL since the design of the reflector evenly distributes light down to your task area.

Choose a qualified CFL that offers a shade of white light that works best for you. For example, while most CFLs provide warm or soft white light for your home, you could choose a cooler color for task lighting.

Red Lake Electric Cooperative is also offering up to a \$2 rebate on CFLs payable on 12 CFLs annually. The rebate form can be found on the Cooperative's Web site at www.redlakeelectric.com.

Improve your homes' energy efficiency

A considerable amount of heat transfers through windows. If you have single-pane windows, consider doing the following:

- Tighten and weather-strip your old windows and then add storm windows.
- Compare the above cost with replacing your old single-glazed windows with new double-glazed windows.
- In colder climates "low-e" coatings on glass can help reduce heat loss through windows.
- In warmer climates, consider adding solar screening to west-facing windows that catch a lot of heating late in the day.

Air that transfers in and out of homes through cracks, crevices and holes can increase energy consumption. Here are some helpful tips to avoid air infiltration:

- During hot and cold weather, ensure windows are closed tightly and locked.
- Ensure that the weather-stripping around doors and windows is tight.
- When your fireplace is not operating, its flue should be closed tightly, with a sign hanging from the flue handle warning it is closed.
- Make sure the outside dryer vent door closes when the dryer is not in use.

The Gazette is only \$29 in Red Lake County

Farmers Union
Oil Company

Thief River Falls218-681-3512



- Fertilizer
- Petroleum products
- Town and country deliveries
- Tires, batteries, accessories
- Farm supplies

WILCOX PLUMBING
AND HEATING, Inc.

RED LAKE FALLS

Plumbing/Heating/Air conditioning

BILL H. MOSER, Master Plumber
License No. 1770PM

BILL J. MOSER, Master Plumber
License No. 6039PM

Refrigerant Certified No. CFR089400285



- In-floor heating
- Pressure systems
- Electric heat pumps
- Oil furnaces
- Gas furnaces

FREE ESTIMATES
COMPLETE SALES AND SERVICE

218-253-4347

HQ

The
Head-Quarters
Hair and
Tanning Salon

HAIRSTYLING
FOR MEN AND
WOMEN

PARK PLACE MALL
RED LAKE FALLS, MINNESOTA

218 253-4223

Security

STATE BANK



- Operating loans
- Vehicle loans
- Farm real estate loans
- Consumer loans

"We appreciate your business."

218-796-5157
Fax 218-796-5158
tim.hagl@ssboklee.com



"THE FARMERS' HELPING HAND"

Dave Miller
Agency

DAVE MILLER, AGENT
RURAL ROUTE 1
VIKING, MINNESOTA 56760



- All-Risk Crop Insurance
- Crop/Hail Coverage

218-523-5861

VOLTS AND JOLTS FEATURE OF THE MONTH

"Giving Glory to God" for 125 years

Saron Free Lutheran Church, rural Erskine, celebrated 125 years of giving glory to God on July 11, 2010. Approximately 65 members and friends of the congregation attended the anniversary service which was followed by a noon lunch.

Saron Lutheran is located in Badger Township of Polk County north of Erskine in an area formerly called Cisco. The first settlers came to this community in 1883. The first area worship gatherings were held in the homes of these settlers. In 1885 it was decided that there was a need for organized worship opportunities. On June 29 community members gathered for their first meeting to organize a congregation which was to be called Saron.

It is believed Saron comes from the phrase "rose of Sharon" out of the Old Testament in the Song of Solomon. Solomon 2:1 reads, "I am the rose of Sharon and the lily of the valleys." Sharon is the largest valley-plain in all of Palestine. It was a wild, fertile plain sporting many beautiful flowers. The person saying she is the "rose of Sharon" was a Shulamite woman who was believed to be Solomon's bride.

Nowhere in the New Testament is Jesus referred to as the rose of Sharon, but he is referred symbolically. In the New Testament Jesus is referred to as the bridegroom and the church as his bride. God is using the "lover" analogy he wants us to have with his Son. The rose is considered the most perfect of all flowers and Jesus is perfect in God's nature therefore he is the rose of Sharon.

Many records and history of Saron Lutheran were lost in 1977 when the Alfred and Gloria Qualley home was lost due to a fire. Much of the history of the church is recalled from the stories that have been passed on from generation to generation.

At the first organizational meeting held in 1885, two acres of land was donated by Haldor S. Hestekin west of Cisco. One acre was for a graveyard and another acre for a church to be built on. This is the present site of Saron Lutheran with the church being built in 1889. Additional land was donated in 1958 by Mr. and Mrs. Martin Melsness.

A pump organ was purchased in 1899 and was used until an electronic organ was purchased in 1977. In 2001 a new piano was purchased in memory of Sally Benedict.

The church's original steeple/bell tower was erected in 1910. Due to deterioration it was rebuilt in 1980 at a cost of \$6,148. Several other building updates have been made over the years with the latest being new front entry doors donated in memory of Darlene Fjerstad by Kimberly and James Johnson.

Saron Lutheran's annex/hall is unique in that it is a separate structure

In 1919 the Luther League purchased the alter furniture from the Northwest Alter Company at a cost of \$232. The alter picture was purchased for \$79.

In the years past, Saron Lutheran would be adorned with three Christmas trees at Christmas time. Candles would be lit on the trees during the Christmas program. "There was a Luther League boy stationed at each

Throughout the life of Saron Lutheran there have been different choirs or musical groups from within Saron that have enhanced the worship services. During the 1970's and 1980's Saron was blessed with the musical talents of a group called the Saronadors. Families involved with the group included the Benedick's, Qualley's, Plante's, Civas', Cook's, Tuenge's and Nordstrom's. The Saronadors also performed at many other area churches.

Over the years many items or works have been donated to Saron Lutheran by congregational members or descendants of members often in memory of someone. Two outdoor additions to the church grounds include an arch over the gateway to the yard and a granite church sign both installed in 1998. The arch was donated by the George Lee family in memory of Mr. & Mrs. Carl Bjelland. The sign was given in memory of Mr. & Mrs. Edwin Tuenge by Mr. & Mrs. Elmer Tuenge.

Throughout the years Saron Lutheran has been associated with different Lutheran synods. Prior to 1961 it was the Evangelical Lutheran Church, followed by the American Lutheran Church (ALC) in 1961. For many years Saron was part of a three-point parish which included Grace Lutheran in Erskine and Faith Lutheran in Mentor. Following a congregational meeting and vote in 1980, Saron chose to go independent due to the costs associated with the three-point parish.

In 1986 Saron Lutheran withdrew from the ALC when several Lutheran synods merged. Since 1987 Saron has been associated with the American Free Lutheran Church.

For the past 10 years Saron Lutheran has been led by the pastor of Calvary Free Lutheran Church of Fosston Since 2004 this ministry has been provided by Pastor Alan Arneson.

Throughout the 125 years Saron Lutheran has served the Cisco area residents its members have had many opportunities to celebrate and give glory to God, but they have also been faced with challenges. A challenge the small rural congregation is faced with today is a declining membership. "We don't know what the future holds for Saron," said Lowell Hamrum. "We do know it has been the only church home to our elderly members and will continue to be."

Saron Lutheran has been blessed with a heritage that has been passed down from generation to generation. Jesus is the foundation Saron was built on by its pioneers and the foundation its members continue to build on today. As stated in Psalm 125:3, "God has done great things for us, we are glad." TO GOD BE THE GLORY!

Saron Free Lutheran Church sits on the plain, nestled by trees, along Badger Creek, in an area formerly called Cisco, north of Erskine. Saron congregation celebrated 125 years of serving God July 11. The church itself numbers 121 years. It's bell tower and cross point toward heaven giving glory to God.

ture not attached to the church. The hall was built in 1933 with an addition and remodeling completed in 1976. At this time a well was dug and a water system was put into the hall which allowed for kitchen and indoor bathroom facilities.

A change in the worship services at Saron Lutheran took place in 1944. Prior to this, services were conducted in Norwegian but were changed to be English.

In most churches the Ladies Aid plays a vital role in the life of the church and this has certainly been true for Saron Lutheran. The Ladies Aid was organized in 1889. The Aid paid \$450 in 1948 to have both the church and hall wired as electric service became available from Red Lake Electric Cooperative. Their mission work extends beyond the congregation having provided support to Pathways Bible Camp, Oak Grove High School, Lutheran World Relief, The Salvation Army, and sister congregations, just to name a few.

Today the Ladies Aid only has five members, but they still continue to meet for Bible studies. Each Memorial Day they serve a free-will noon lunch with the proceeds being donated to the cemetery fund. This social dates back to 1953.

Youth education and activities at Saron Lutheran have also played a vital role in the life of the congregation. Sunday School was started in 1896 with the Luther League being organized in 1915. Each year the Christmas program was presented by the Sunday School and sponsored by the Luther League. Due to the lack of young people in the congregation, Luther League was discontinued in 2006 and Sunday School in 2009.

Christmas tree with a damp rag on a stick," stated Myrtle Hamrum. "If a candle burned down or if a branch on the tree started on fire, it was the Luther Leaguer's task to snuff it out with the damp rag."

"Following the program Luther Leaguer's would serve a lunch to the congregational members," said Hamrum. "The lunch included a sandwich, a piece of cake and a cookie wrapped in a napkin served out of a dishpan."

A gray granite sign sits in the front yard of Saron Lutheran Church. It was donated in 1998 by Mr. and Mrs. Elmer Tuenge in memory of Mr. and Mrs. Edwin Tuenge.

It is a tradition at Saron Lutheran Church that whenever a special celebration is held at the church the attendees gather at the steps of the church for a group picture. This held true July 11 when approximately 65 people gathered at the steps, for a picture, the day of Saron's 125th anniversary.

Bray-Gentilly
Mutual Insurance Co.

Locally Owned and Operated

Serving Policyholders Since 1900

218-683-3200

2017 Hwy. 59 SE • P.O. Box 592
Thief River Falls, MN 56701

INSURANCE FOR
FARMS, HOMES
AND PERSONAL
PROPERTY

TELEPHONE US FOR AN
AGENT NEAR YOU!

Hanson Oil &
Fuel, Inc.



UP TO 5,000 MILES
BEFORE OIL CHANGE

- Quality products, prompt service
- Diesel fuel
- Aviation gas
- Jet-A
- Biodiesel
- Heating oils
- Unleaded gas

FARMER-GROWN BIODIESEL

Give Andy a call at
218-253-2787 or 218-281-4102
RED LAKE FALLS

COLOR
Copies

FULL COLOR
NO MINIMUM

Some conditions apply.
Call or stop in for details.

Starting at 30¢

THE
GAZETTE

105 Main Ave, Red Lake Falls
253-2594

Want to cut your heating
cost by up to 50%?

Buy a YORK Affinity
heat pump today!



YORK
It's time to get comfortable.

GROVE MECHANICAL, INC.

Your hometown heating &
air conditioning team!

Serving Crookston and the surrounding
communities for 30 years.
(218) 281-3863

OFFICE PHONE
253-2168

OUTAGE PHONE
253-2200

1-800-245-6068



Red Lake Electric
Cooperative, Inc.

One of the Minnkota Power Systems



The number of attendees at Saron Lutheran Church's 125th Anniversary service were six to seven fold of a regular worship service. It was great to have the increased number of family and friends worshipping together.



An arch over the gateway to Saron Lutheran Church depicts Saron's 100th Anniversary 25 years ago. The arch was given by the George Lee family in memory of Mr. and Mrs. Carl Bjelland.



Saron Lutheran Church 125th Anniversary attendees give glory to God as they lift up their voices in song. The anniversary brought many family and friends together for the joyous occasion on July 11.



Special music was provided at Saron Lutheran's 125th anniversary by from left; Dianne Piper, Gloria Benedick and Debra Rewertz. They were accompanied on guitar by Ken Manning.



The altar, altar picture, and altar rail in Saron Lutheran Church were purchased by the Luther League in 1919. The items were purchased from Northwest Alter Company. The altar furniture cost \$232 and the picture was \$79. People attending worship services at Saron today enjoy the beauty of the altar as a result of the hard work and diligence of the Luther Leaguers of more than 90 years ago.



Ella Nordstrom, Erskine, serves as the organist at Saron Lutheran Church. She has performed this task for nearly 20 years.



Saron Lutheran Church's 125th anniversary celebration included a noon meal following the worship service. The gathering in the hall allowed for a time of fellowship

The youngest and oldest members of Saron Lutheran are grandson Tyrell Hamrum and grandmother Myrtle Hamrum. Tyrell was the lone confirmed in 2009 and could possibly be the last confirmed at Saron. The 1939 confirmation class had six confirmands which included Myrtle (Frette) Hamrum, Brooks; Lillian (Anderson) Asker, Grand Forks, ND; Norma (Anderson) Hanson, Erskine; Bernice (Hanson) Melugin, Erskine; Alpha (Amoth) Kloty, Detroit Lakes; Art Lee, Erskine. All six of these confirmation classmates are still living and continue to get together from time-to-time.



Saron Lutheran Church is led by Pastor Alan Arneson who serves as the pastor at Calvary Free Lutheran Church of Fosston. He has worked for both congregations since 2004.



Lowell and Tyrell Hamrum, Brooks, provided musical entertainment at Saron Lutheran's 125th Anniversary. The anniversary was held July 11.



July 11 was a beautiful day allowing for Saron Lutheran anniversary attendees to be outside and visit. Gentlemen visiting included (L to R) Lowell Hamrum, Brooks; Omer Frette, Ogilvie; Mark Lee, Plummer.



Four cousins attended Saron Lutheran's 125th Anniversary of which three are sisters. The cousins included (L to R) Dianna Piper, Nancy Gustafson, Brenda Wang and Debra Rewertz. Dianna, Nancy and Debra are sisters.



The Ladies Aid of Saron Lutheran only numbers five but they still remain an active group. Members include (L to R) Myrtle Hamrum, Brooks; Gloria Benedick, Ella Nordstrom, Lola Plante, all of Erskine; Margaret Hamrum, Brooks. The ladies served the noon meal the day of Saron's 125th anniversary.

4-H'ers receive awards

Continued from page 1



Marshall County Extension Service photo.
Morgan Klopp of Argyle was awarded the grand champion sheep Junior showmanship award at the 2010 Marshall County Fair. The award is sponsored by Red Lake Electric Cooperative. Morgan is a member of the Riverside 4-H Club and daughter of Phillip and Amy Klopp. She will be attending the Minnesota State Fair with her sheep.



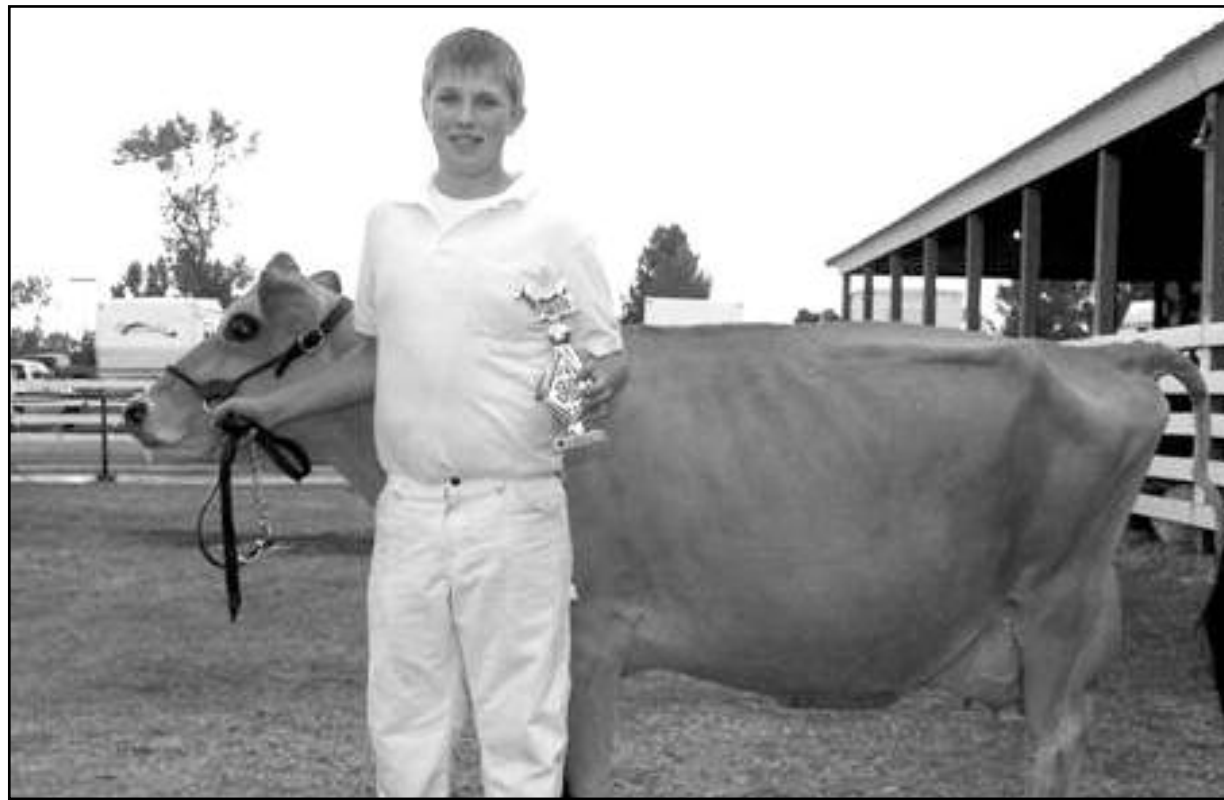
Thief River Falls Times photo.

The beef rate-of-gain award was won by Malena Rupprecht of Thief River Falls at the 2010 Pennington County Fair. She is a Silverton 4-H Club member and the daughter of Daryl and Teresa Rupprecht. This award is sponsored annually by Red Lake Electric Cooperative.



Thief River Falls Times photo.

Samantha Larson of Euclid won the 4-H champion of show and the open class grand champion ewe awards at the Pennington County Fair held July 21-25. The grand champion ewe award is sponsored by Red Lake Electric Cooperative. Samantha is the daughter of Spencer and Nancy Larson and is a member of the Steiner 4-H Club.



Thief River Falls Times photo.

The top rate-of-production dairy cow at the 2010 Pennington County Fair was shown by Seth Rupprecht of Thief River Falls. The Jersey cow produced 13,734 pounds of milk in 305 days. Seth is the son of Dale and Sherri Rupprecht and is a Silverton 4-H Club member. The rate-of-production award is sponsored by Red Lake Electric Cooperative.

MN State Fair boasts long history of ag exposition

After four years of territorial fairs, the first Minnesota State Fair was held in 1859 near what became downtown Minneapolis, the year after Minnesota was granted statehood.

During the fair's early years, the site of the exposition changed annually with stops in Minneapolis, St. Paul, Rochester, Red Wing, Winona and Owatonna. In the 1870s and early 1880s, civic groups from both St. Paul and Minneapolis worked relentlessly to provide a permanent home for the fair in their respective cities. The Minnesota State Fair finally found a permanent home at its present location, midway between the Twin Cities when the Ramsey County Board of Commissioners donated their 210-acre poor farm to the State Agricultural Society, the governing body of the State Fair.

Secure in its new surroundings, the Minnesota State Fair began to grow. Physically, the fairgrounds blossomed to 320 acres. Architecturally, it is home for many historically-significant structures including the Arts Center, Progress Center, Grandstand and Coliseum (formerly known as the Hippodrome).

An important change in the State Fair over the years has been in the attractions offered to fair visitors. The character of early fairs was dominated by agricultural exhibits and competitions, reflecting its original purpose of encouraging farming in the state. While agriculture is still the primary focus, the scope of activities has broadened to include large-scale entertainment features, technological and industrial exhibits and scores of education and government institutions.

Since its inception, the fair has been held every year with only five exceptions: in 1861 and 1862 due to the Civil War and Dakota Indian Conflict, in 1893 because of scheduling conflicts with the World's Columbian Exposition in Chicago, in 1945 due to war-time fuel shortages, and in 1946 due to a polio epidemic.

For more information please e-mail history@mnstatefair.org.



A stop sign requires that you come to a complete stop. You must also stop at a marked stop line or at any crosswalk before entering the intersection.

You must also come to a complete stop in the following situations:

- Before entering a road from an alley, a private driveway, or a parking ramp. Always stop before crossing an adjoining sidewalk or crosswalk.
- At an intersection or crosswalk with a traffic signal displaying a red light. Wait until the signal changes to green and your path is clear before proceeding.
- At a flashing red traffic light. Treat this as you would a stop sign.
- At a freeway ramp meter, when the light is red.
- At a railroad crossing with a stop sign.
- When a flag person or traffic device directs you to stop.



DAVIDSON READY MIX & CONSTRUCTION

- Concrete
- Concrete Blocks
- Rebar
- Rock
- Gravel
- Backhoe and
- Septic Tanks
- Dozer Service



**CALL (218) 449-4865
or (218) 681-7033**

*1325 Greenwood St. W
Thief River Falls*

www.davidsonconstruction.com

Want to cut your heating cost by up to 50%?



GROVE MECHANICAL, INC.

Your hometown heating & air conditioning team!

Serving Crookston and the surrounding communities for 30 years.

(218) 281-3863

**Buy a
YORK
Affinity
heat
pump
today.**

BUILT TO HANDLE YOUR TOUGHEST JOBS.

**THE FOURTRAX®
RANCHER® 4X4
AND 4X4 ES.**

• 218-681-1007 •

RV Sports, Inc.
www.rvsports.com

Hwy. 1 & 59 W. • Thief River Falls
FAX: (218) 681-8420 • 1-800-826-5403
Hours: Mon. - Fri. 9-5:30 • Sat. 9-1



honda.com UTILITY ATVs ARE RECOMMENDED ONLY FOR RIDERS 16 YEARS OF AGE AND OLDER. ATVs CAN BE HAZARDOUS TO OPERATE. FOR YOUR SAFETY, BE RESPONSIBLE. READ OWNER'S MANUAL. ALWAYS WEAR A HELMET, EYE PROTECTION & PROTECTIVE CLOTHING. BE CAREFUL ON DIFFICULT TERRAIN. ALL ATV RIDERS SHOULD TAKE A TRAINING COURSE. (FREE FOR NEW BUYERS. ASK YOUR DEALER OR CALL ASI AT 800-887-2867). NEVER RIDE UNDER THE INFLUENCE OF DRUGS OR ALCOHOL, ON PAVED SURFACES, ON PUBLIC ROADS, WITH PASSENGERS, AT EXCESSIVE SPEEDS, NO STUNT RIDING. RESPECT THE ENVIRONMENT WHEN RIDING. FourTrax® and Rancher® are trademarks of Honda Motor Co., Ltd. ©2009 AFMAG, Inc. (9-09) 09-0088



Your key to buy, sell or trade anything is the CLASSIFIEDS

The members are invited to use this FREE WANT AD service.

If you have anything to trade or sell, just drop a card to Red Lake Electric Cooperative, Box 430, Red Lake Falls, MN 56750.

For Sale

NW Minnesota's largest selection of Arctic Cat and Honda ATVs and Side-By-Sides. New Arctic Cat 700 HDX Prowler 3-seater on display! New 2011 models arriving-specially on new non-current models. Get your unit and accessories now for your fall and winter needs. RV Sports, Hwy 1 West, Thief River Falls. 1-218-681-1007 or www.rvsports.com.

For Sale - 1996 Chev. Monte Carlo 2 door, low mileage, good condition. Also for sale - Ladder Rack w/side tool boxes to fit full length pickup. 218-681-5648.

Another shipment of Aluma Utility, ATV, and 2, 3, or 4-place snowmobile trailers has arrived! Aluminum construction, minimum maintenance, many sizes, ready for Fall and Winter needs. RV Sports, Highway 1 West, Thief River Falls, MN. 1-218-681-1007 or www.rvsports.com.

Help wanted

HELP WANTED - Immediate opening(s) for full-time small engine/powersports service technician and/or powersports set-up person. Experience with snowmobiles, ATVs and motorcycles helpful. Apply in person at RV Sports, 1412 3rd St. W. Thief River Falls or call 218-681-1007 and ask for Randy.

Miscellany

PRINTING - Check with the Gazette for all your printing needs. No job is too big or too small. The Gazette, 253-2594, Red Lake Falls, MN.

COLOR COPIES - Now available at the Gazette in Red Lake Falls, 253-2594.

Burns Welding & Repair

Portable, Commercial, Aluminum and Tig Welding
Custom Cattle Gates • Bale Rings
Farm and Trailer Repair • DOT Inspections • ATV Equipment

Shop: 218-964-5444 • Cell: 218-686-8327
burnsrepair@gvtel.com • www.burnswelding.net

DON'S MACHINE SHOP
ASE CERTIFIED REBUILDERS
ALL GAS AND DIESEL ENGINES

- Automotive •Industrial
- Marine •Agricultural
- High Performance
- Vintage Auto
- Heavy Duty Diesel

CALL FOR ESTIMATE!
INSTALLATION AVAILABLE
FOSSTON, MN
218-435-6379 or 1-800-448-1518

PRICE EXAMPLES:
•GM 350 \$1,315 - \$1,419
•GM 6.5 Diesel with new block \$5,330
•Ford 7.3 Diesel Powerstroke \$4,200
All prices are with exchange on a rebuildable core.

Help Wanted

Northwest Grain, a division of CHS Inc., is seeking a **laborer/scale man** to begin immediately at our **Warren, MN** location.

Northwest Grain offers competitive salary, potential for growth and a benefit package with medical, retirement and 401K. Overtime is also available.

Contact Kevin Hjelseth at 218-745-5363 or 701-739-2087



702 Dawn Ave.
Thief River Falls, MN 56701
218-681-8221 • 1-800-950-9917
Email: sales@trs salvage.com • Website: www.trsalvage.com

NEW AND USED FARM EQUIPMENT PARTS

Electrical Contractor

Shop: (218) 253-4123
Home: (218) 253-4127

KEN'S ELECTRIC, INC.

Red Lake Falls, Minnesota 56750

"We Service Our Work"

Contact Us For All Your Electrical Needs!

Allen Remick - Cell: (218) 689-0313
Jason Knott - Cell: (218) 289-5104

Wanted

WANTED - Cheap used trailer that will support and transport a 5 x 5 building. Call 218-681-3396 and ask for James or leave a message.

Real Estate

AFFORDABLE COUNTRY HOME ON 10 ACRES!



This property is just waiting for someone to give it the finishing touches. Home consists of 1-1/2 stories with 4+ bedrooms. Located just off the tar road, minutes from town.

PRICED TO SELL!
Call for Details!

SOLLIE REALTY
Fosston, MN
218-435-1525
www.sollie.net

DON'S

307 First Street East • TRF
Across from Pennington Square
SEWING & VACUUMS
Sales and Service • NEW & USED
Small Appliance Repair
Serving the area for 17 years
218-681-8664

KM Transmission And Repair

Quality • Experience
Dependability • Honesty

Fair Prices

It's all just that simple. Keith Moen
Mon. - Fri. 8:00 am to 5:00 pm
Sat. by appointment
(218) 681-4250
616 Davis Ave. N, Thief River Falls



Midwest Roofing

Residential and Commercial

Licensed • Bonded • Insured
FREE ESTIMATES

20061 Center St E
Thief River Falls, MN 56701

(218) 681-3879
(218) 686-4475

Carpet ETC. of St. Hilaire, MN

Flooring to Fit Every Lifestyle
Carpet, Vinyl, Ceramic, Laminate

Quality Flooring at a price you can afford.

310 Broadway • St. Hilaire, MN • (218) 964-5555 • M - F 9:30 & Sat 9-3 • Anytime By Appointment

Residual Materials, Inc.



RMI

We Buy . . .

- Aluminum
- Brass
- Copper
- Steel
- Stainless Steel

222 Red Dot Place, Grand Forks, ND 58203

(701) 746-9381

fax (701) 772-2008

Help the Northern Navigators R/C Club celebrate its 28th year during our last major outdoor event for 2010. Come to the...

R/C Fun Fly

This event is not a public airshow. If you've ever wondered about flying model airplanes, come join us. Just have a look around or learn the basics about kits and flying from experienced pilots.



August 21

at Riverbottom Field just North of Red Lake Falls.

Follow the signs on Broadway Ave North.

Visitors should bring a lawnchair, sunscreen, & beverage



BRIAN SCHAFER
218-289-5430
CELLULAR

MIKE SCHAFER
218-289-5431
CELLULAR

16483 120th Avenue SW
Red Lake Falls, Minnesota 56750
Office 218-253-2497

COMMERCIAL TRENCHING RESIDENTIAL FARM

Concrete Coatings & Repair

- Epoxy Coatings (colored chip & quartz)
- Decorative Concrete Overlays
- Concrete Polishing and Staining
- Concrete Densifier and Sealers
- Any concrete area needing a new appearance with a seamless and easy to maintain finish.
- Shop/Garage and Basement Floors
- Commercial Kitchens and Retail Floors
- Patio, Driveway/Apron and Sidewalks

Contact: **Concrete Designs**
(218) 681-8004
E-mail: epoxy@mncable.net

School will open soon.
Watch for school buses and children

COLOR Copies

FULL COLOR
NO MINIMUM

Some conditions apply.
Call or stop in for details.

8 1/2 x 11 30¢
8 1/4 x 14 35¢
11 x 17 40¢

THE **GAZETTE**

105 Main Ave, Red Lake Falls
253-2594

LUMBER AND Building Supplies



ASK ABOUT OUR COMPLETE BUILDING PLANS SERVICES!

We're glad to help you with any building problem you may have.

Oklee Lumber, Inc.
(218) 796-5131

We Buy Cars and Car Bodies **We Sell Welding Supplies** **Roll-Off Boxes Available**

We Buy Aluminum Cans **We Sell New Steel - Structural and Sheet** **We Buy Scrap Iron and Metals**

Evans Scrap & Steel, Inc.
218-681-3488 • Toll Free 1-800-906-3488
13203 190th St. N.E. • Thief River Falls, MN

Winter Hours:
7:30 - 4:30
Monday-Friday

Red Lake Electric Cooperative

Want Ad Order Form

Use this handy form to submit your want ads.

PLEASE PRINT.

Mail or bring your ads to the RLEC office by the tenth of the month. Commercial ads are 10¢ per word with a minimum charge of \$4 per insertion.

Member want ads are FREE. One want ad per member per month.

Please PRINT . . .

Your Name, Address and Phone Number. Mail with your power bill payment, if you prefer, or fax to 218-253-2630.

\$1000 DRAWING

OCTOBER 5, 2010

FOR ALL MEMBERS USING AUTO-PAY FOR PAYING THEIR MONTHLY ELECTRIC BILL.

Auto-Pay is the easiest, most efficient way to make and process your monthly bill payment at Red Lake Electric Cooperative and we want to show our appreciation to the 1,513 members who currently use it. If you are using Auto-Pay or sign up for Auto-Pay by Oct. 5, on Oct. 6 you are automatically entered in the drawing.

Questions about Auto-Pay? Give Red Lake Electric Cooperative a call or e-mail redlake@minnkota.com. 1-800-245-6068 or 218-253-2168.

AUTO-PAY OFFERED BY RLEC

Red Lake Electric Cooperative is pleased to offer you Auto Pay. Now you can have your monthly energy bill paid automatically from your checking or savings account. You can receive the Auto Pay service by completing the Auto Pay sign-up sheet and returning it to Red Lake Electric Cooperative.

The Auto Pay service is free of charge. Not only is this service free, you will eliminate the expense of writing a check, postage to mail your payment and no more late payment penalties because your bill will be paid on time, every month, for you.

Your payment will be automatically made for you on the 5th of each month. If the 5th falls on a week-

end or holiday, the payment will be made on the next business day. You will continue to receive your monthly energy bill as you have in the past, indicating the amount that will be withdrawn from your bank account. The proof of your payment will appear on your bank statement and your next month's energy bill statement.

Continue to pay your monthly bill until you are notified on your bill that the Auto Pay has been set up for you.

If you have any questions about the Auto Pay please call RLEC at 800-245-6068 or 218-253-2168.

AUTO-PAY

SIGN-UP SHEET

I authorize Red Lake Electric Cooperative (RLEC) and the bank listed below to initiate variable entries to my checking or savings account. This authorization remains in effect until I notify RLEC in writing to cancel it in such time as to allow RLEC to act on it.

RLEC ELECTRIC ACCOUNT # _____

NAME (PRINT) _____

ADDRESS _____

TELEPHONE # _____

NAME OF FINANCIAL INSTITUTION _____

CHECKING ACCOUNT # _____

SAVINGS ACCOUNT # _____

SIGN HERE TO AUTHORIZE _____

Please return this authorization form with a blank, voided check to:
Red Lake Electric Cooperative, P.O. Box 430, Red Lake Falls, MN 56750

CHAUTAUQUA AND FRENCH FESTIVAL

Roster of Presenters

- ♦ Coulée- a Métis band
- ♦ Amoussa Koriko- playwright and professional African dancer and drummer
- ♦ Vigil Benoit-Interviews Bobby Whitefeather
- ♦ Bread bakers with the earth oven
- ♦ Barb Seeger and the Fosters with Clayworks, Hands on crafts for kids
- ♦ Chef John St Marie Food Tent opens at 11 a.m.
- ♦ Polk Co. Sheriff's Mounted Posse
- ♦ AFRAN Silent Auction- there's something for everyone



August 27, 28, 29 2010

All day activities:

- AFRAN Silent Auction
- Baking bread in outdoor earth oven
- Working artists
- Clayworks pottery sale
- 'Make and take' craft and flowers for children
- Tourtière- French meat pie and walleye in food tent
- Ice cream cones/sundaes
- Breathing the fresh air
- Experiencing a sense of history
- Visiting with friends, old and new

Friday Night bonfire 9:30



Saturday August 28

- 1 p.m. Coulée music
- 2 p.m. Virgil Benoit
- 3 p.m. African Drums
- 5 p.m. Mass at the Shrine
- 6 p.m. Supper under tent
- 9 p.m. Dance at The Spot

Sunday August 29

- 11 a.m. Food tent opens
- 1 p.m. Coulée music
- 2 p.m. Local History
- 3 p.m. Amoussa Koriko
- 3:30 Silent Auction close
- 3:30 Final batch of bread

FREE ADMISSION

Take Co Rd 11 south from Red Lake Falls or 7 miles NE of Gentilly on Co. Rd 11 or 30 minutes NE of Crookston on Hwy 75. Follow the brown park signs.

This project has been financed with funds provided by the State of Minn. through the Northwest Regional Development Commission through funding from the Minnesota State Arts Board, the Minnesota State Legislature and the McKnight Foundation, Red Lake Co. Historical Society and IF Midwest.

OLD CROSSING AND TREATY PARK

SUMMER ATV SALE!

2011s Now Arriving! Specials On Remaining '08, '09 & '10s

SPECIAL INCENTIVES INCLUDE CHOICE OF...

- Rebates
- Extended Warranties
- Special Finance Incentives

*On Select Years and Models... See us for Details!

<p>POWER STEERING</p> <p>Now Available on Select 2010 & 2011 Models!</p>	<p>2010</p> <p>550 EFI Auto 4x4 Green, Red, Lime Starting at \$9,499</p>	<p>2009</p> <p>550 EFI Auto 4x4 Red, Green, Lime Starting at \$5,899</p>	<p>2009</p> <p>700 EFI Auto 4x4 Red, Lime, Green Starting at \$6,499</p>
<p>2009, 2010 TBX Models</p> <p>'09 650 Green \$8,399 '10 700 EFI Black \$7,299</p>	<p>2008</p> <p>DVX Sport 1 400 Used \$3,599 1 250 New \$2,499</p>	<p>2009</p> <p>366 4x4 Auto Red or Green Starting at \$4,799</p>	<p>2008</p> <p>500 4x4 Auto Lime Starting at \$5,199</p>
<p>2010</p> <p>450 EFI 4x4 Auto Red, Green, Lime Starting at \$5,999</p>	<p>2008</p> <p>700 EFI 4x4 Green - Starting at \$5,849</p>	<p>2008</p> <p>2-Rider Model 650 - Red - Starting at \$6,399</p>	<p>2009 PROWLERS</p> <p>New Units Starting at \$8,499!</p>

Offer valid at participating dealers on new and unused 2008, 2009, 2010 or 2011 Arctic Cat ATVs. See dealer for details and program dates. REBATES vary by model and dealer participation. Financing is provided by Sheffield Financial and is subject to credit approval; not all applicants will qualify for credit. ATVs can be hazardous to operate. For your safety always wear a helmet, eye protection, and protective clothing. Arctic Cat recommends that all riders read and understand their operator's manual before operation. Never carry a passenger on a single-rider ATV. Only ride an ATV that is right for your age. Supervise riders younger than 16. Arctic Cat recommends that all riders take a training course. For safety or training information in the U.S., call the ATV Safety Institute at (800) 887-2887 or see your dealer. ® are trademarks or registered trademarks of Arctic Cat Inc. ©2010 Arctic Cat Sales Inc., Thief River Falls, MN 56701. Arctic Cat ATVs and Prowlers are world-class products from Arctic Cat, Inc.

Prices Include Inbound Freight & Setup!

www.rvsports.com

RV Sports, Inc.

1412 3rd St. W. • Thief River Falls
(218) 681-1007

Hours: Monday - Friday 9 a.m. - 5:30 p.m. • Saturday 9 a.m. - 1 p.m.



Red Lake Electric Cooperative, Inc.

One of the Minnkota Power Systems

Phone	218-253-2168
Toll-free	1-800-245-6068
Fax	218-253-2630
After-hour outage	218-253-2200
Office hours	Monday-Friday, 8:00-4:30
E-mail:	redlake@minnkota.com
Web site	www.redlakeelectric.com

P. O. Box 430 • 412 International Drive SW • Red Lake Falls, MN 56750-0430