



Volts and Jolts

Published monthly for the members of
RED LAKE ELECTRIC COOPERATIVE, Inc.

One of the Minnkota Power Systems

SERVING THE FOUR-COUNTY AREA OF MARSHALL, PENNINGTON, RED LAKE AND POLK

VOL. 43 – NO. 9

RED LAKE FALLS (RED LAKE COUNTY), MINNESOTA 56750

JULY 2008

Power plant tour scheduled for Sept. 10 and 11

Red Lake Electric Cooperative and Clearwater-Polk Electric Cooperative plan to cosponsor a tour of the Milton R. Young Power Plant Sept. 10 and 11.

The first day of the trip will include a stop at Minnkota Power Cooperative's headquarters in

Grand Forks. Time will be spent at the Lewis and Clear Interpretive Center and Fort Mandan near (2030004.01 Orrin R. Olson) Washburn. A relaxing evening will be spent at the Seven Seas Motel in Mandan, which will include a banquet sponsored by Minnkota

Power.

The second day of the tour includes visiting the Milton R. Young generation station. It will also include a drive through the open pit lignite mines (weather permitting) to see the mining operation first hand. You are guar-

anteed to have a better understanding of the process involved with generating the electricity that serves you.

The cost to participate in the tour is \$70 per person, double occupancy, \$85 single occupancy. This includes transportation,

meals and lodging. The tour is open to all Red Lake Electric Cooperative members and/or spouses.

The tour group will depart from Red Lake Electric Cooperative's (1207003.03 LaVerne J. Nelson) headquarters in Red Lake Falls at

7 a.m. Wednesday, Sept. 10. Approximate time of return is 9 p.m. Thursday, Sept. 11.

Registrations and payment are due by Aug. 25.

If you have not partaken of this tour, sign up today for a learning experience.



Milton R. Young Station

Pole inspections to be done north and east of Thief River Falls

Pole Maintenance Company will soon begin pole inspections on the north circuit of the Dakota Junction Substation. This area is north and east of Thief River Falls in Pennington and Marshall counties.

The townships in part in Pennington County are North, Silverton, Rocksbury and Smiley. Townships in part in Marshall County are Excel and Adger. The pole

inspection area spans from 10 miles north of Thief River Falls to 10 miles east.

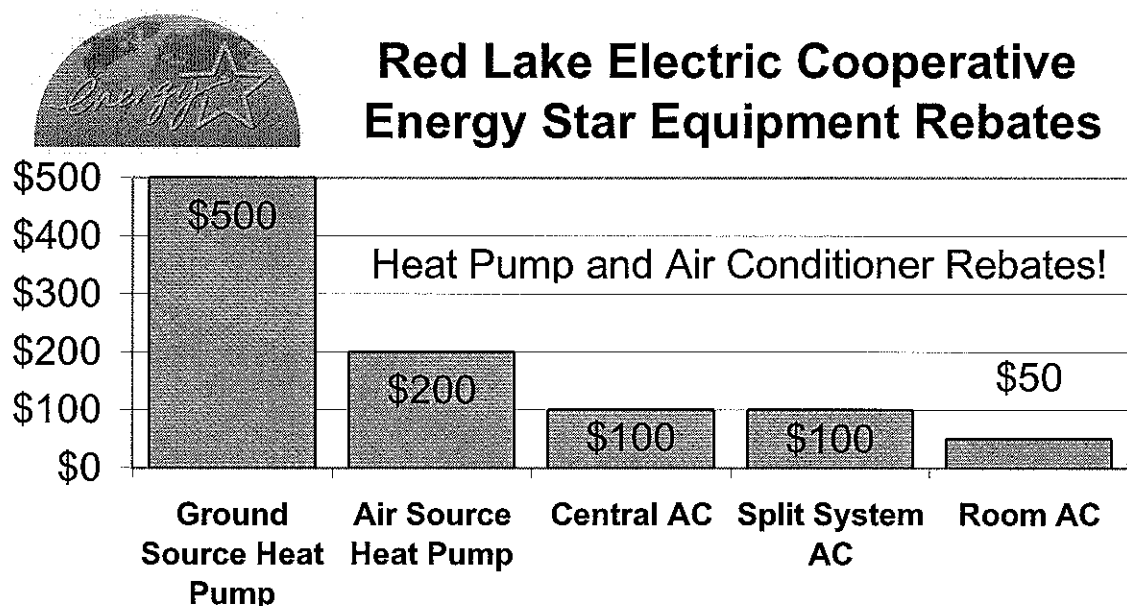
Pole Maintenance Company will use pickups and all-terrain vehicles. Personnel will travel the route of the power lines.

For information call Red Lake Electric Cooperative at 800-245-6068.

QUICK TAKES

A look at some statistics from your Red Lake Electric Cooperative

Red Lake Electric Cooperative promotes energy conservation by offering the following rebates to customers who purchase any of the following new equipment that are Energy Star® rated products. Products that meet or exceed energy efficiency guidelines set by the U.S. Department of Energy and the U.S. Environmental protection agency are easily identified by the Energy Star® logo. Call us today at 1-800-245-6068 or 218-253-2168 if you have any questions on how to qualify for your Energy Star® rebate from Red Lake Electric Cooperative.



Power Plant Tour Registration

September 10 and 11, 2008

Signup deadline is August 25, 2008

NAME OF PARTICIPANTS _____

ADDRESS(ES) _____

TELEPHONE NUMBER _____

NUMBER OF PARTICIPANTS _____

ACCOUNT NUMBER _____

ROOM PREFERENCE _____

AMOUNT ENCLOSED _____

☐ SMOKING

☐ NONSMOKING

(\$70 PER PARTICIPANT, DOUBLE OCCUPANCY)
(\$85 PER PARTICIPANT, SINGLE OCCUPANCY)

Return to RLEC, P.O. Box 430, Red Lake Falls, MN 56750, along with your check. RLEC will contact you later with details. Your check or deposit will be returned if the tour should be cancelled for some reason. If it becomes necessary for you to cancel out on the trip, it is required that you notify RLEC at least 48 hours before departure to be eligible for a refund. Registration for the trip is on a first-come, first-served basis with a limited number of openings. If you have previously partaken of the trip, you will be put on a space availability standby.

4-Hers receive awards

Each year Red Lake Electric Cooperative sponsors awards for 4-H livestock exhibitors at area county fairs. This includes the counties of Red Lake, Pennington and Marshall. This issue of *Volts & Jolts* includes pictures of the award (3636001.08 Ryan M. Barth) recipients from the Red Lake and Pennington County fairs. Additional pictures appear on page 8.



Alexis Rosnow, Plummer, was the champion junior goat showman at the Red Lake County Fair June 26 through 28. She was awarded a cash prize on behalf of Red Lake Electric Cooperative. She is the daughter of Tiffany and Jesse Bushelle and is a member of the Happy-Go-Lucky 4-H Club. Gazette photo



The grand champion 4-H beef heifer at the Pennington County Fair was exhibited by Hunter Larson of Euclid. He received a cash award from Red Lake Electric Cooperative and is the son of Spencer and Nancy Larson. He belongs to the Silverton 4-H Club. TRF Times Photo



Natalie Beyer, Red Lake Falls, was the champion junior dairy showman at the Red Lake County Fair held in Oklee. She received an award sponsored by Red Lake Electric Cooperative. She is the daughter of Neil and Polly Beyer and is a member of the Pembina Trail 4-H Club. Gazette photo



Manager's Comments

by Roger Johanneck

Red Lake Electric reaches 70-year milestone

July 30 marks a special milestone for Red Lake Electric Cooperative (RLEC): it was 70 years ago this day that RLEC was incorporated. When one considers the few numbers of businesses that achieve even a milestone of 50 years (less than 2 percent), it is a tribute to the founders, past and present directors, customers and employees for such an achievement.

Establishing the Cooperative 70 years ago was a formidable challenge for the Cooperative's original organizers. Through hard work and perseverance, the first home in the Cooperative's service area was energized about two and a half years after RLEC was officially in (58050003.07 Ira Patnode) business. What a visible sign of victory to see the lights come on for the first time and a sense of accomplishment that event was for the Cooperative.

As one reviews the history and early years of RLEC, it is interesting to mark the differences and similarities from back then to today. You can learn about the Cooperative's formative years by reading the two history articles that have been posted on the Cooperative's Web site at <http://www.redlakeelectric.com/>. Go to "About Us," then "History."

The Beginning and Development of Red Lake Electric Cooperative was written in 1981 by the late Millard F. Dailey, member, director, officer and pioneer of RLEC. The second writing is titled "A History of the first 10 Years of Red Lake Electric Cooperative," which was written in the 1950 RLEC annual report booklet.

As we face the challenges of today, I think it is useful to look back occasionally and recall the hardships faced, battles lost and won, by those who came before us. Whether it's a July 4 celebration that gets us think-

ing about the struggle for independence, participating in a Memorial Day service, honoring our veterans or reading about the ups and downs the founders of our Cooperative faced, we should all sense a feeling of gratitude for what these folks did in their time. They are all reminders that each generation, each one of us, has their own challenges. Reflecting on our history should bring us hope and encouragement for the task we're working on today and the challenge we'll tackle tomorrow.

As a cooperative, we are grateful to all the member/customers who worked together to get RLEC off the ground and laid the foundation (4402040.02 Bud Cameron) for the successful business we are today. When we look ahead to the challenges our future holds, we see some of the same obstacles faced during the formation years of RLEC. Providing a reliable, adequate and safe supply of energy for our customers and keeping that energy affordable continues to be a challenge for us.

The impact of member involvement today, whether it is practicing energy conservation, contacting legislators about issues facing our industry, not planting trees near the power line or calling the Cooperative when you spot a problem on our power lines, is just as important as ever.

As we mark this 70th birthday of RLEC, perhaps the best way we can pay tribute to those whose efforts we benefit from today is to ask ourselves, what will we do to keep it going for those who follow us?

Happy 70th birthday, RLEC; I hope you have many more.

From the mailbag

DEAR RLEC:

Thank you so very much for choosing me as one of your recipients for the scholarship. It will help a lot. Much appreciation and thanks.

Sincerely,
Cassie Columbus,
Red Lake Falls

DEAR RLE TRUST:

Thank you for considering and giving a gift to the Viking Fire Department. It has helped us in training and purchase of new equipment, which allows us to do our job of serving and protecting in a better way. So from the community and the fire department, thank you and God bless.

Viking Fire Department

DEAR RLEC:

Thank you so much for sponsoring 4-H awards. It is very nice of you and greatly appreciated.

Thank you once again.
Natalie Beyer,
Red Lake Falls

DEAR RLEC:

Thank you for the Dewalt heavy-duty drill. I brought an electric project to the fair.

Sincerely,
Joshua Miller,
Red Lake Falls

DEAR RLEC:

Thank you for the gift of money given to the junior horse showmanship at halter. My horse, Thunder, and I did the showmanship pattern with very few errors. Showmanship is one of my favorite pleasure classes, especially since Thunder is good at it. My other horse, Star, will soon be doing showmanship instead. 4-H has made me braver around people and it makes me more outgoing.

Thanks again,
Mikayla Miller,
Red Lake Falls

DEAR RLEC:

Thank you to the service men for the help they gave us following the lightning storm.

James Hjelle,

Newfolden

DEAR RLEC:

Thank you for the money given to the junior beef showmanship project area. I brought my cow, Sunshine, and her calf, Moonshine, to the fair. I used Sunshine in showmanship and she did quite well. Thanks again,

Mikayla Miller,
Red Lake Falls

DEAR RLEC:

I would like to thank you for the scholarship. I will be attending the University of North Dakota this fall to study history and the financial help is greatly appreciated.

Mitchell Knutson,
Newfolden

Mission Statement

It is the mission of Red Lake Electric Cooperative to enhance the quality of life for people of our service area by consistently providing quality electric service and other valued services while holding our employees, our community and our environment in high regard.



Red Lake Electric Cooperative, Inc.

One of the Minnkota Power Systems

WE PROUDLY PRESENT TO YOU

The Red Lake Electric Cooperative Customer Service Guarantee



It's short and simple! Red Lake Electric Cooperative employees will meet or exceed your expectations of friendly, courteous service and will meet any commitments they make to you. If your expectations of the service provided by our employees is not met, please contact me at the Red Lake Electric Cooperative office, 253-2168. You will receive \$5.00 for your inconvenience and our promise to serve you better in the future. Our employees' commitment to quality customer service makes this guarantee possible.



Red Lake Electric Cooperative, Inc.

One of the Minnkota Power Systems

ROGER P. JOHANNECK
General Manager

RED LAKE ELECTRIC COOPERATIVE, Inc.

VOLTS & JOLTS

(USPS 663-400)

Published monthly by the Red Lake Electric Cooperative, Inc., 412 International Drive SW, Red Lake Falls, Minnesota 56750-0430, in the interest of its members and others. Periodical Postage Paid at the U. S. Post Office in Red Lake Falls, Minnesota 56750. POSTMASTER, SEND ADDRESS CHANGES to Volts & Jolts, c/o Red Lake Electric Cooperative, Inc., P. O. Box 430, Red Lake Falls, Minnesota 56750-0430. E-mail: redlake@minnkota.com

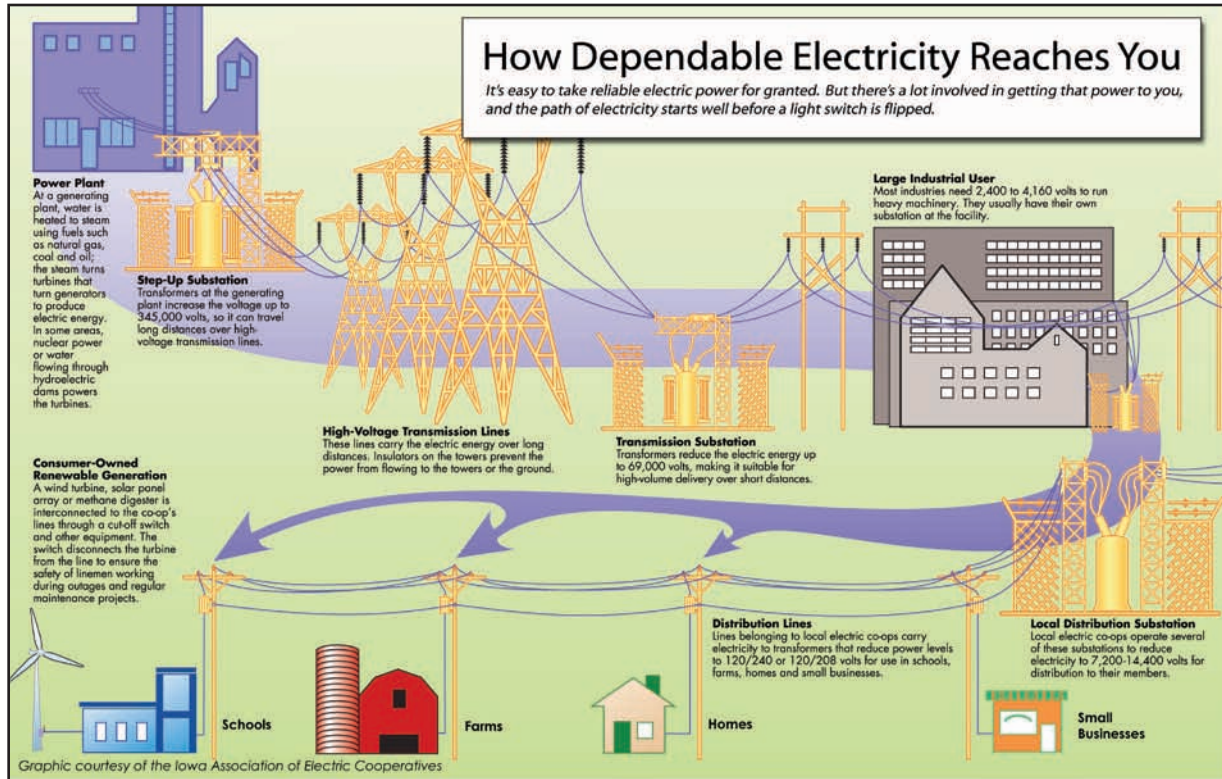
OFFICERS AND DIRECTORS

PRESIDENT Kelly Lundeen
VICE PRESIDENT Bonnie Christians
SECRETARY-TREASURER Henry Wieland
DIRECTORS Robert Olson,
Robert Finstad, Steven Linder, Joyce Johnson,
Mark Hanson, Peter Mosbeck

Subscription Rate \$2.50 per year

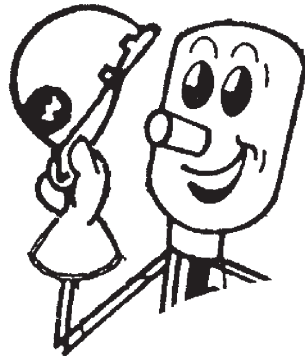
NOTICE

Hidden within the text of the articles on pages 1, 2, 3 and the back page of this issue of the Volts & Jolts are the names and account numbers of five RLEC members. They will appear within the articles in parenthesis as such (99-99-99-999-99 Roger P. Member). If you find your name and account number, clip it out and send it with your next payment. You will be credited with \$5 on your electric bill.



Tip of the hard hat

Thank you to David Arveson for pulling a stuck line truck with his tractor.



Car and power lines



If your car comes in contact with a power line, a state of panic may set in. Try to stay calm and follow these tips:

- You should remain inside your vehicle. If you are in your car, you are not part of electricity's path, which always looks for the shortest way to the ground. Honk your horn to alert passersby.
- If someone stops to help, roll down the window and warn them not to touch the car or the power line. Ask them to phone 911 and contact the local electric utility immediately.
- Wait in your car until qualified electrical workers turn the power off and tell you it's safe to leave the car.
- If you have to leave the car because of fire or other danger, open the door and jump away from the vehicle so no part of your body touches the vehicle and the ground at the same time. Make sure to

jump with both feet together so your feet land on the ground at the same time.

- After you land with both feet together, shuffle away, keeping both feet in contact with the ground constantly.
- Do not try to help someone from the vehicle. If you do so you may become a path for electricity and be injured or killed.

– Source: National Weather Service.

Thank you to members

Thank you to the following members and friends for their hospitality: Mr. and Mrs. Clarence Dietz, Darrow, Shirley and Gary Lundeen, Joyce Johnson, James Johnsrud and Raymond Olson.



Red Lake Electric Cooperative, Inc.

One of the Minnkota Power Systems

Things you should know about your electric service

BILLINGS AND COLLECTION

You will receive your energy bill on or near the 20th of each month.

Payment of your monthly energy bill is due on the 20th of the month. You may pay your bill in person at RLEC during office hours, use the 24-hour drive-up drop box located next to the RLEC office, by Auto Pay, or by mail. Payment must be in the office, drop box, Auto Pay, or in the mail, as evidenced by the postmark, by the 5th day of the following month to avoid a late payment charge. A 1 1/2% monthly late payment charge will be computed on delinquent energy bills, the minimum late payment charge will be \$1.00.

If your payment is not received by the 15th of the month, a final notice of disconnection statement will be included on your following bill. The final notice statement will notify you when your electric service will be disconnected if the delinquent amount remains unpaid. If an employee is sent to disconnect your electric service, a \$50 collection fee will be charged to your account, even if you pay the collector.

To have a disconnected service reconnected, all amounts owing, a \$50 reconnection fee, and a security deposit must be paid. If the service must be reconnected after normal working hours, a \$100 reconnection fee must be paid.

BAD CHECKS

A \$15 charge will be levied each time a check is returned because of nonsufficient funds, account being closed or payment stopped.

OUTAGES

In case your electricity goes out, please do the following:

1. Check your fuses or breakers at the yard pole or meter pedestal.
2. Call your neighbor to see if they are out of electricity also.
3. Call the RLEC office (218-253-2168 or 1-800-245-6068) during working hours or 218-253-2200 after hours. We will accept collect calls for outages only.

METER TESTS

RLEC has a schedule in place to have its meters periodically tested for accuracy. Results from these tests show that meters generally slow down with age; however, if you think that your meter is recording too much usage, RLEC will test it for accuracy. You must pay a test fee in advance of the test. If the meter test shows that the meter was inaccurate, the test fee will be refunded to you.

STOPPED METERS

If you find your meter has stopped and you are using electricity, please contact the office immediately so we can replace it. Average consumption will be billed to the member for the time the meter was stopped so there is no advantage in not reporting a stopped meter.

METER READINGS

An automated meter reading system is utilized to obtain monthly meter readings. Although the system is normally reliable, there is always a chance that the correct reading has not been transmitted to the office for billing. Customers should periodically read their meter and compare it to the reading on the billing statement. If the actual reading is not close to the billing statement reading, please call the office.

GENERAL SERVICE RATES

Facilities charge variable \$15 to \$21 month
First 500 KWH 8.0¢ Kwh
Over 500 KWH (April-Dec.) 5.7¢ Kwh
Over 500 KWH (Jan.-Mar.) 6.5¢ Kwh
Multiphase users add \$16/month cost of service charge.

Standby, \$8/month (meter disconnected but the power line retained; standby is not available on services larger than 15 KVA transformer capacity).

Security light, \$6/month, high pressure sodium, \$7/month, mercury vapor; water heater flat credit, \$5/month (on January-April billing); off-peak equipment charge, \$3.50/month per heat meter; off-peak electric heat rate, 3.5¢/kWh long-term control, 5.0¢/kWh short-term control.

Recipe corner

Steak and Vegetable Kabobs

1/4 c. vegetable oil
1/4 c. lemon juice
1/4 c. soy sauce
1/4 c. packed brown sugar
2 garlic cloves, minced
3 whole cloves
Dash dried sweet basil
2 2/3 lbs. sirloin steak, cut into 1 1/4-in. pieces
2 dozen cherry tomatoes
2 dozen fresh mushroom caps
1 large green or sweet red pepper, cut into 1 1/2-in. cubes
2 small zucchini, cut into 1-in. slices
1 medium onion, cut into wedges
Hot cooked rice, optional
In a bowl, combine first seven ingredients for marinade. Set aside. Assemble kabobs by threading meat and vegetables on metal skewers. Place in a large glass dish. Pour marinade over kabobs; cover and refrigerate six hours or overnight. Turn several times. To cook, grill kabobs over hot coals until the meat and vegetables are cooked as desired. Remove from skewers; serve over rice if desired. Yield: 10 servings.

Cornmeal Muffins

1 c. all-purpose flour
1 c. yellow cornmeal
1/3 c. sugar
1 tbl. baking powder
1 tsp. salt
2 tbl. finely chopped onion
1 c. cream-style corn
1/2 c. light mayonnaise
3 tbl. vegetable oil
Egg substitute equivalent to 1 egg
In a large mixing bowl, combine dry ingredients. Make a well in the center and add all remaining ingredients. Stir just until mixed. Spoon into 12 muffin cups coated with nonstick cooking spray. Bake at 400° for 20 minutes. Yield: 1 dozen.

Secret-Recipe BBQ Sauce

1 tbl. olive oil
1 large onion (12 oz.), chopped
2 tbl. chopped, peeled fresh ginger
3 tbl. chili powder
3 garlic cloves, crushed with garlic press
1 8-oz. can crushed pineapple with juice
1 28-oz. can crushed tomatoes in puree
1/3 c. ketchup
1/4 c. cider vinegar
3 tbl. dark brown sugar
3 tbl. light (mild) molasses
2 tsp. dry mustard
1 tsp. salt
In 5- to 6-quart saucepot, heat olive oil over medium heat until hot. (Do not use a smaller pan; sauce bubbles up and splatters during cooking; the deeper the pan the better.) Add onion and ginger; cook until onion is tender and golden, about 10 minutes. Add chili powder; cook, stirring, 1 minute. Add garlic and crushed pineapple with its juice and cook 1 minute longer. Remove pot from heat. Stir in tomatoes with their puree, ketchup, vinegar, brown sugar, molasses, dry mustard and salt. Spoon one-fourth of sauce into blender. At low speed, puree until smooth. Pour sauce into bowl; repeat with remaining sauce.
Return sauce to saucepot; heat to boiling over high heat. Reduce heat to medium-low and cook, partially covered, stirring occasionally, until reduced to about 5 cups, about 25 minutes.
Cover and refrigerate if not using right away. Sauce will keep up to a week in the refrigerator or up to two months in freezer.

Corn on the Cob with Molasses Butter

2 tbl. butter or margarine, softened
1 tsp. light (mild) molasses
1/2 tsp. ground coriander
1/2 tsp. salt
Pinch ground red pepper (cayenne)
8 ears corn, husks and silk removed
Prepare outdoor grill for covered direct grilling over medium-high heat. In a small bowl, with fork, stir butter, molasses, coriander, salt and ground red pepper until well combined. Place corn on hot grill rack over medium-high heat. Cover grill and cook corn, turning frequently, until brown in spots, 10 to 15 minutes. Transfer corn to platter; spread each ear with molasses butter.

Lemon-Garlic Potato Pocket

2 1/2 lbs. red potatoes, not peeled and cut into 1-in. chunks
12 garlic cloves, peeled
2 tbl. olive oil
1 1/2 tsp. freshly grated lemon peel
1 tsp. salt
1/4 tsp. coarsely ground black pepper
Prepare outdoor grill for covered direct grilling over medium heat. In large bowl, toss potatoes, garlic, oil, lemon peel, salt and pepper until potatoes are evenly coated.
Layer two 30" by 18" sheets heavy-duty foil to make double-thick sheet. Place potato mixture in center of stacked foil. Bring short ends of foil up and over potatoes; fold several times to seal. Fold remaining sides of foil several times to seal in juices.
Place packet on hot grill rack over medium heat and cook, turning packet over once halfway through grilling, until potatoes are fork-tender, 30 minutes.
Before serving, with kitchen shears, cut an X in top of foil packet to let steam escape, then carefully pull back foil to open.

Barbecue Beans

1/2 1 b. ground beef
1 medium onion, chopped
1 small green pepper, chopped
2 celery ribs, chopped
1/2 c. packed brown sugar
1/2 c. ketchup
1/2 tsp. ground ginger
Dash ground cloves
2 31-oz. cans pork and beans
In a large skillet, brown beef with onion, green pepper and celery until meat is browned and vegetables are tender. Drain fat. Stir in brown sugar, ketchup, ginger and cloves. Add beans and mix well. Spoon into a 2 1/2-qt. casserole. Bake, uncovered, at 350° for 1 to 1 1/2 hours or until beans are as thick as desired. Yield: 8 to 10 servings.

Red Lake Electric Cooperative, Inc.

Operating Report

MONTHLY COMPARISON

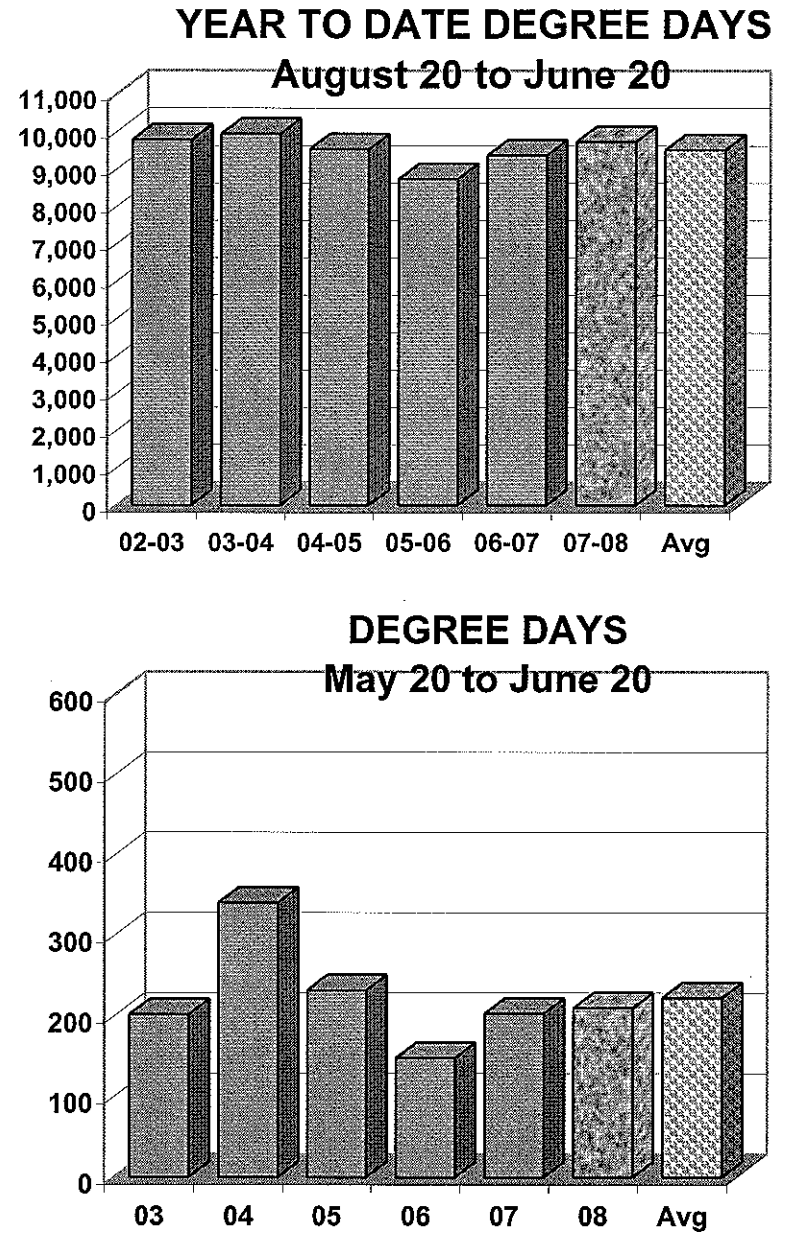
	MAY 2007	MAY 2008
Total Revenue	\$ 525,109	\$ 643,828
Total Margins	\$ (22,384)	\$ 4,817
Cost of Power	\$ 354,270	\$ 437,923
KWH's Purchased	6,910,628	9,347,897
Capital Credits Paid to Estates	\$ 14,549	\$ 1,189

YEAR TO DATE COMPARISON

	MAY 2007	MAY 2008
Total Revenue	\$ 3,714,456	\$ 4,420,498
Total Margins	\$ 829,217	\$ 1,038,759
Cost of Power	\$ 2,265,577	\$ 2,659,641
KWH's Purchased	62,270,574	70,611,726
New Service Connections	4	13
Customers Served	5,064	5,101
Capital Credits Paid to Estates	\$ 52,492	\$ 26,068
Miles of Line		
Overhead	2,330	2,323
Underground	230	231

DEGREE DAYS

To determine degree days, you must calculate the daily mean temperature for the time period you are measuring. Degree day computation is based on the assumption that a building does not require any heat if the outside temperature averages 65 degrees during a 24-hour period. To obtain a degree day figure, the high temperature and the low temperature for the day are added and the total divided by two. That figure is then subtracted from 65. For example, if the high temperature was 30 degrees and the low temperature 10 degrees, the figure would be 30+10=40; 40/2=20; 65-20=45. This would be a 45-degree day. The higher the degree day figure, the more heat required to warm your home.



(218) 681-3960
www.mcmullensales.com
1601 Hwy 59 SE
Thief River Falls, MN
\$100 Dollars Per Day Will Be Deducted Until They're SOLD!

McMULLEN
AUTO & TRUCK Sales

DUTCH AUCTION
Both Units Start at \$4,990 July 7th
Price On July 18 -\$3,990
July 19 -\$3,890
July 21 -\$3,790

1998 Ford Expedition XLT, 3rd Row, Rear AC/Heat, 151k, 5.4L V8, PW, PL, PSeat
1997 GMC Suburban 1500 5.7L V8 Vortec, Leather, Rear AC/Heat, PW, PL, PSeat

2004 GMC Crew Cab, Duramax Diesel, Auto., 4x4, \$23,900
2004 Ford F350 XLT 4x4 Crew Cab, 8' box, Powerstroke diesel auto, 64,000 miles \$23,900
2004 Chevy Silverado 2500HD, LS, Crew Cab, 6.6L Duramax Dsl, Auto, CD \$22,950
2003 Ford F350 Crew Cab, Lariat, 4x4, 6.0L Diesel, Auto, Short Box, 94,000 Miles \$18,950
2002 Dodge Ram 2500, Quad Cab, Cummins Diesel, Auto, 4x4, 8' Box \$16,950
2006 Buick Rainier CXL, 5.3L V8, Auto, Leather, Full Power \$17,950
2006 Chrysler Town & Country Touring, V6 Auto, Stow & Go Seats \$17,950
Leather, Sunroof, DVD Player \$17,950 \$16,590
2001 Ford F350 Lariat, 7.3L Diesel, Auto, 4x4, Crew Cab, Dually, 8' Box \$14,950 \$15,900
2000 Ford F250 XLT Ext Cab, Short box, 7.3L Diesel, Auto, 4x4 \$13,950
2000 Ford F350 XLT Ext Cab, 7.3L Diesel, 6 spd, 4x4, Dually, 8' Box \$14,900
2001 Chevy K2500 LS, Ext Cab, 4x4, 6.6L Duramax Dsl, Auto \$14,950 \$14,450
1999 Dodge Ram 2500 Quad Cab 8ft Box, 4x4, 6 cyl Cummins Dsl, 5 spd \$13,950
2002 Chevy Suburban LS, 5.3L V8, Auto, 4x4, Rear Air/Heat \$13,450
2000 Chevy Suburban K2500 LT, 6.0L Engine, Auto, 4x4, 80,000 Miles \$12,950
2004 Chrysler Pacifica AWD, 3.5L V6, Auto, Heated Leather, 6 pass, Sunroof \$12,950
2006 Pontiac Vibe, 4 cyl, auto 4dr, AC, CD, 69,000 Miles \$11,950
2005 Chevy Equinox LT, AWD, 6 cyl, Auto, 55,000 Miles \$10,950
1999 Chevy Silverado K1500LT, 4x4, 5.3L V8, Auto, Leather, Autostart, 93,000 Miles \$9,980
1994 Nissan UD 1800, 4 cyl Dsl 5 spd, w/alum rollback and winch \$9,450
2002 Olds Silhouette Luxury, 6 cyl, Auto, 69,000 Miles \$8,990
2002 Chevy Suburban LS, 5.3L V8, Auto, 4x4, Rear Air/Heat \$8,990
1995 Chevy K3500, Crew Cab, Dually, 4x4, 6.5L Diesel Auto, 8ft Box \$8,650
1999 Jeep Wrangler 6 cyl, 5 spd \$7,980
2001 Dodge Durango SLT, 4x4, 4.7L V8, Auto, Leather \$7,450
2000 Chevy Silverado LS, 1500 Ext Cab 2WD, 5.3L V8 Auto \$7,450
2001 Honda Civic LX, 2dr, AC, CD, Cruise, Power Locks & Windows, Tilt Steering \$7,290
1997 Dodge Ram 2500 SLT 4x4, V10 auto \$6,990
2001 Olds Silhouette Premiere, 3400, V6, Auto, Leather, Full Power \$6,990
2003 Olds Alero GL 4dr 3400 V6, Auto, 83,000 Miles \$6,990
2000 Chevy K1500 LS, Ext Cab, 4x4, 5.3L V8 Auto, Long Box \$6,990
2001 Olds Aurora, 4.0L V8, Auto, Sunroof, Leather, Fully Loaded \$6,980
2002 Ford Taurus SE, 3.0L V6 Auto, 4dr, 76,000 Miles \$6,450
1998 Chevy Silverado K1500 Reg Cab, 8' box, 4x4, 5.7L V8, Auto \$6,450
1998 Buick Park Ave, 3800 V6, Auto, Leather \$2,990

“YOU BEND ‘EM . . . WE MEND ‘EM.”

We're equipped to repair anything from frames to windshields!

GIVE US A CALL
218-681-3952

NORTHWEST AUTO BODY
Next to Fleet Supply • Hwy. 1 and 59 West • Thief River Falls

Commuter Bus Survey

Tri-Valley Transportation is surveying the public to see if there is an interest in commuter buses to transport the public to and from work and/or school. This is for NW Minnesota, to include Polk, Norman, Marshall, Red Lake and Pennington counties.

If interested in a Commuter Service, **PLEASE respond by July 23, 2008** or sooner to:

1-866-677-3656
281-9098 Crookston
Or email to: commuter@tvoc.org

Please indicate "Your name, the community from/to and your contact information for validation."

THANK YOU
TRI-VALLEY TRANSPORTATION

DAVIDSON

READY MIX & CONSTRUCTION

- Concrete
- Rebar
- Gravel
- Septic Tanks
- Concrete Blocks
- Rock
- Backhoe and Dozer Service

CALL (218) 449-4865 or (218) 681-7033
1325 Greenwood St. W
Thief River Falls
www.davidsonconstruction.com

CENEX Red Lake County Co-op

DRAWINGS
DOOR PRIZES

CUSTOMER APPRECIATION Days

Brats, Hotdogs, Chips, Ice cream & Beverage

Brooks - July 22
Oklee - July 23
McIntosh - July 24
11:30 a.m. - 1:30 p.m.

Time is Running Out!

Get your act in now to compete for cash

Red Lake Falls Summerfest Talent Show Competition & Little Miss Summerfest Pageant

Friday, July 25, 6-8 p.m.

The Little Miss Summerfest Pageant is open to girls ages 4-9. The Talent Show Competition is open to everyone. A \$10 entry fee is required for both competitions with 100% payback. To enter in either event or for more information, please contact Destiny at 218-684-1169 (Leave Msg) or via email at rftalent@hotmail.com.
DEADLINE: July 18

ALSO ASK ABOUT OUR CAR SHOW

SUMMERFEST JULY 25, 26 & 27

Come on out to the Red Lake Falls Summerfest for fun, activities, music, food, family and friends.

Farmers Union
Oil Company

Thief River Falls218-681-3512



- Fertilizer
- Petroleum products
- Town and country deliveries
- Tires, batteries, accessories
- Farm supplies

WILCOX PLUMBING
AND HEATING, Inc.

RED LAKE FALLS

Plumbing/Heating/Air conditioning

BILL H. MOSER, Master Plumber
License No. 1770PM

BILL J. MOSER, Master Plumber
License No. 6039PM

Refrigerant Certified No. CFR089400285



- In-floor heating
- Pressure systems
- Electric heat pumps
- Oil furnaces
- Gas furnaces

FREE ESTIMATES

COMPLETE SALES AND SERVICE

218-253-4347

The
Head-Quarters

Hair and
Tanning Salon

HAIRSTYLING
FOR MEN AND
WOMEN

PARK PLACE MALL
RED LAKE FALLS, MINNESOTA

218 253-4223

Security
STATE BANK



- Operating loans
- Vehicle loans
- Farm real estate loans
- Consumer loans

"We appreciate your business."

218-796-5157

Fax 218-796-5158

tim.hagl@ssboklee.com

A FULL
SERVICE
BANK

Each deposit insured to \$100,000

FDIC



"THE FARMERS' HELPING HAND"

Dave Miller
Agency

DAVE MILLER, AGENT
RURAL ROUTE 1
VIKING, MINNESOTA 56760



- All-Risk Crop Insurance
- Crop/Hail Coverage

218-523-5861

VOLTS AND JOLTS FEATURE OF THE MONTH

A little piece of paradise at the home of Connie and Tim Miller

By Destiny Harmoning

Tim and Connie Miller have developed their property, located just outside of Thief River Falls, into a landscaped paradise.

In the summertime, Connie spends much of her day outside, working in the flower beds. She has the time to do so because she only works during the school year as a cook manager for Challenger Elementary School. She has been employed there for the past eight years.

Tim has helped landscape their yard on a more technical level: building, digging and laying the walkway. He also does all the mowing and fertilizing of their weed-free plush lawn. Tim has been the general manager of Northwest Grain in St. Hilaire for nine years now.

Anoka is Connie's hometown and that is where she graduated from high school. Tim grew up in Princeton, where he graduated from high school.

The couple met through Tim's brother and sister-in-law, Reed and Dixie Miller. They were married May 23, 1988.

The Millers have three children, Jessie, 28, Andrew, 19, and Jacie, 16. Jessie is married to Jason Bolte and they live in Fargo with their two children, Jayden, 5, and Trevyn, 2 months. Andrew will be attending the University of North Dakota in the fall; he will major in business. Jacie is attending Lincoln High School.

The Millers have been customers of the Red Lake Electric Cooperative since they moved to their home nine years ago. "It's been real reliable," Tim said. The Millers have off-peak electricity and interruptible electric heat as their main heat source.

Jacie, Connie, Tim and Andrew Miller

Connie really enjoys gardening, landscaping, quilting and reading. She is a master gardener of the Thief River Falls chapter and is also a member of the Quilter's Guild. Connie typically spends from morning until evening outside. Tim likes to fish and hunt. He enjoys taking his friends or grandson fishing for walleye in his boat at Lake of the Woods. He fishes about two to three days a month. The Millers attend church at Trinity

Lutheran.

When the Millers moved to their home near Thief River Falls from their previous home in Wahpeton, N.D., they took with them two and a half truckloads of plants.

A challenge for Connie was figuring out how and where to transplant her flora on their new property. She decided to put in a split-rail fence with a garden. When that garden was complete, Connie still had plants left, so she put in a long bed nearby. Then she added a raised bed with a walkway. All of this was completed within the first year.

The following July, Connie was on the Master Garden Tour. The tour typically consists of about five yards that are on display for people to walk through to get ideas and get answers to questions from the master gardener. It usually takes place on a Friday evening for about four hours.

About five years ago, the landscaping on the Millers' property continued. Connie wanted a walkway arbor, so she drew up the plans for one and Tim built it.

In their last home, the Millers did brick work in their landscaping and they used that knowledge to do the same type of work for the new walkway. The Millers decided how they wanted the path and put in the walkway, which Connie proceeded to garden around.

Last year, the Millers built the pergola in the backyard. Also, in preparation for Andrew's graduation, the Millers upgraded their

backyard patio and added more walkway.

While Tim was digging out the patio and walkway area with a Bobcat, he dug out a hole in the backyard for Connie to build a pond, something she had always wanted. Connie used information she had collected on the subject to plan and create her own pond.

After the main hole was dug, Connie spent a month and a half digging and shaping the pond, which has two steps all the way around underneath the water so Connie can safely garden her aquatic plants. After the shaping was complete, Connie began building the waterfall that pours into the pond.

For the most part, the pond is mechanically maintained. There is a unit that captures leaves in a net and then the water travels through a biofilter. The water is then pumped at 5,000 gallons an hour through 2 1/2-inch flexible PVC pipe where it is exposed to an ultraviolet light that kills algae. Then the water is pumped behind the waterfall where it cascades into the pond and is circulated.

The system runs most of the time and is only shut off once a week to clean the net and rinse the filter. In the fall, many oak leaves

fall into the pond and the Millers skim them off the top with a net a few times a day.

The pond features 10 to 15 lily pads, two of which bloomed this week, one with a cream-colored flower and one with pink. There are several other aquatic plants such as water lettuce, many of which have been steadily multiplying on their own.

There are also 14 koi in the pond. In the winter, the koi remain in the pond. The water is 2 1/2 feet deep in the middle and the Millers put a heating unit in the pond, so as long as there is a hole to release the gases that come out of the ground, the fish are fine. The koi go dormant in the winter and don't need to be fed after it gets cold enough.

With all the extra sod that came out of the pond and the patio area, Tim made a pile for Connie to create another raised bed in the back-

yard underneath mature oak trees. This was done last August.

Landscaping and gardening have always been of interest to Connie. She has done some type of landscaping at every place she has lived.

"I would like to put in a new flower bed every year, that's the fun part," Connie said. Connie's flower beds feature a plethora of plants, including delphiniums, lamb's ear, salvia, veronica, peonies, lilies, coral bells, helianthus, hostas, iris, astilbe and sedums. Her favorite color of flowers is red. "It's hard to have favorites; I like them all," Connie stated.

Connie's landscaping work is never done. Right now she is shaping up all the beds by digging extra plants out and moving plants around, in preparation for the Master Garden Tour next year.

Connie spends the majority of her day maintaining her flower beds.

Connie and Tim Miller carefully planned and landscaped their whole yard. They even layed the brick walkway.

The Millers landscaped this pond on their property. It features koi and several varieties of aquatic plants.

Bray-Gentilly
Mutual Insurance Co.

Locally Owned and Operated

Serving Policyholders Since 1900

218-683-3200

2017 Hwy. 59 SE • P.O. Box 592
Thief River Falls, MN 56701

INSURANCE FOR
FARMS, HOMES
AND PERSONAL
PROPERTY

TELEPHONE US FOR AN
AGENT NEAR YOU!

THIS SPACE
FOR RENT

253-2594

FOR ONLY
52¢
PER WEEK

A full version of the Gazette is now available on www.arcasearch.com

Digital subscription . . .
\$26⁹⁵ per year

6 months for \$18.95
3 months for \$13.95

Go to www.arcasearch.com, click on the Courier icon and then the "Client List" button. Choose the Red Lake Falls Gazette from the Minnesota newspapers list and subscribe. It's that simple!

THIS SPACE
FOR RENT

253-2594

OFFICE PHONE
253-2168

OUTAGE PHONE
253-2200

1-800-245-6068

Red Lake Electric
Cooperative, Inc.
One of the Minnkota Power Systems

Line upgraded NE of Plummer

Two miles of single-phase line along 220th Avenue northeast of Plummer was recently upgraded. The poles were replaced last winter and the new wire was strung this summer. The line was built in the 1940s using amerductor (steel) wire. During World War II often materials used to construct power lines were difficult to obtain, especially wire. Amerductor was obtainable from a Canadian supplier, which allowed line construction to continue during the war.



Red Lake Electric Cooperative line crews work to upgrade a single-phase line northeast of Plummer. Lineman Ira Cota, in the foreground bucket, unties the amerductor wire allowing it to fall to the ground.



Once the wire has been set on all the insulators on the poles, Casey Thronson, lineman, uses ratchet hoists and a dynamometer to pull the wires into proper tension. Factors that determine the tension include wire size, pole span and ambient temperature.

**Sausages, Hams
Bacon & Dried Beef
Made the Old Fashioned Way!**

• Natural Herbs & Spices • Natural Wood Slow-smoked

Check out our full selection of

FRESH CUT MEATS

by the package or bulk amounts for your freezer!

★ **IT'S STEAK TIME**

"We have the Best!"

218-563-4945

Hours: 9:00 - 5:30 Monday-Friday
9:00 - 1:00 Saturday
McIntosh, MN

**RADIO CONTROL
AIRSHOW**

July 26
11:00 a.m. - 4:00 p.m.

SPONSORS:
CITY OF RED LAKE FALLS
NORTHERN NAVIGATORS R/C CLUB

STATIC DISPLAYS

FLIGHT DEMONSTRATIONS

TALK WITH R/C PILOTS

FREE admission
\$2 Parking
donation for
Boyscouts

RED LAKE FALLS MUNICIPAL AIRPORT
4 MILES SOUTH ON HWY 32
RED LAKE FALLS, MINNESOTA



New aluminum wire for the line upgrade is strung out with the reels of wire on the back of the Bombardier. Dick Gervais, crew foreman, in the bucket, prepares to lift the wire up onto the pole.



After the new aluminum wire has been pulled to proper tension, preformed ties are used to secure the wire to the insulators. Brett Knott, apprentice lineman, ties the conductor wire to the pole-top insulator.



Tying in of the new wire has been completed. Casey Thronson uses a shotgun stick (fiberglass insulated stick) to attach the hot tap (clamp) to the phase wire to re-energize the line.



Dick Gervais, left, and Brett Knott reel up the old amerductor using a wire winder on the trailer. The amerductor wire has served its purpose for about 60 years but now will be sold as scrap.

RVSPORTS.COM • RVSPORTS.COM • RVSPORTS.COM • RVSPORTS.COM • RVSPORTS.COM

SUMMER FUN IS JUST STARTING!

ARCTIC CAT
SHARE OUR PASSION!

SUMMER PROGRAM

FINANCING AS LOW AS 9.9% FOR 60 MONTHS PLUS 2 YEAR WARRANTY OR FREE 3,000# WARM WINCH OR CASH INCENTIVES ON SELECT MODELS!

NON-CURRENT SPECIALS (ALL PROGRAMS APPLIED)

400 4x4.....	starting at \$4,499
500 4x4.....	starting at \$5,199
'07 400 4x4 TRV.....	starting at \$5,599
650 4x4 Box Models.....	starting at \$5,999
'08 500 4x4, Auto. Camo w/Winch.....	\$5,999
'08 700 EFI 4x4, Auto. Camo w/Winch.....	\$6,799

ATV'S
BEST ON EARTH

SALES EVENT

250 - 680cc ATV'S IN STOCK

FINANCING AS LOW AS 9.9% FOR 36 MONTHS UP TO \$500 BONUS DUCKS ON SELECT 2007 MODELS!

NON-CURRENT SPECIALS (ALL PROGRAMS APPLIED)

250 Recon or 250 EX.....	starting at \$2,999
420 Ranchers.....	starting at \$3,999
420 Honda Rancher ES.....	starting at \$4,199
500 Foreman ES.....	starting at \$5,799
680 Rincon (Green or Camo).....	starting at \$6,749

• Our Pricing includes Inbound freight and set up.

NEW 2009 MODELS ARRIVING!

SPECIALS ON ALL '07-'08 MODELS!

CYCLES
HONDA PERFORMANCE FIRST

USED ATV INVENTORY

ATV	SALE
2001 Kawasaki 300 4x4.....	SOLD \$1,999
2004 Honda 450R Hi-Perf.....	SOLD \$3,499
2003 Arctic Cat 500 TBX w/Winch.....	\$3,299
2005 Arctic Cat Youth 50.....	\$1,199
2005 Arctic Cat 500 TBX.....	\$3,799
2006 Arctic Cat 250 DVX Sport.....	\$2,199
2007 Arctic Cat 400 4x4 Gear.....	\$4,399
2007 Arctic Cat 400 4x4 Auto (Warr).....	\$4,599
2008 Arctic Cat 650 Auto (Warr).....	CALL

FINANCING AS LOW AS 9.9% APR FOR 36 MONTHS O.A.C.

NON-CURRENT SPECIALS (ALL PROGRAMS APPLIED)

250 Rebel/250 Nighthawk.....	starting at \$3,199
750 Shadows.....	starting at \$6,499
1500 VTX.....	starting at \$7,999
1800 VTX.....	starting at \$9,999
1800 VTX Touring.....	starting at \$11,999

• Many other specials on off-road and race models. Pricing includes freight and set up.

HOURS:
Monday-Friday
9 a.m. - 5:30 p.m.
Saturday
9 a.m. - 1 p.m.

www.rvsports.com

RVSPORTS.COM • RVSPORTS.COM • RVSPORTS.COM • RVSPORTS.COM • RVSPORTS.COM

Electrical Contractor

Shop: (218) 253-4123
Home: (218) 253-4127

KEN'S ELECTRIC, INC.

Red Lake Falls, Minnesota 56750

"We Service Our Work"

Contact Us For All Your Electrical Needs!

Allen Remick - Cell: (218) 689-0313
Jason Knott - Cell: (218) 289-5104

Central Air Conditioning by:

Amana

Complete Factory Testing
Aluminum Fin Coil
Energy Efficient
Copper Tubing
Durable Finish

Rain Care Seamless Gutters

Continuous manufacturing on-site with the heaviest gauge gutter aluminum available. Other systems cannot make that claim. Compare before you buy! Most jobs completed on one day! Call for a complete estimate.

Available at: **RAIN CARE CO.**

John P. Lovly
Goodridge, MN (218) 378-4641

www.thiberts.com • www.thiberts.com • www.thiberts.com • www.thiberts.com

**2008 CHEV. SILVERADO
EXTENDED CAB****2008 CHEV. SILVERADO
CREW CAB**

0.0%

For 72 Months O.A.C.*

**2008 CHEV. IMPALA LT**

3.5 V-6 Luxury Edition,
Heated Leather Seats,
Power Seats, Spoiler,
Chrome Wheels,
Onstar XM

\$25,565.00 MSRP
-1,000.00 Rebate
-750.0099 or Newer Trade-In Rebate
-849.00 Thibert Discount

\$ 22,966⁰⁰

2008 BUICK ENCLAVE FWD

CXL, 8-Passenger,
Remote Start,
Heated Leather
Seats, Onstar XM,
Loaded,
White Diamond



\$37,060.00 MSRP
-750.0099 or Newer Trade-In Rebate
-1,499.00 Thibert Discount

\$ 34,811⁰⁰

2008 CHEV SILVERADO REG. CAB 4X4

4.8 V-8, Auto., Cruise, A/C,
Power Locks, Hitch,
Chrome Wheels,
Silver



\$25,841.00 MSRP
-1,500.00 Rebate
-1,317.00 Thibert Discount

\$ 23,024⁰⁰

2007 PONTIAC G-6 4-DR.

3.5 V-6, Power Windows, and Locks,
Tilt, Cruise, CD,
Only 8,770 Miles,
Black



4.9%
for 60 Months
O.A.C.

SALE \$ 15,200⁰⁰
\$248.50 Per Month*

*2,000.00 Down, Tax and License and Fees Extra, OAC

2008 CHEV MALIBU

Power Windows, and Locks,
20,800 Miles, Tilt,
Cruise, CD,
Keyless Entry,
Pewter



3.9%
for 60 Months
O.A.C.

SALE \$ 15,900⁰⁰
\$256.00 Per Month*

*2,000.00 Down, Tax and License and Fees Extra, OAC

2004 CHEV IMPALA LS

3.8 V-6, Heated
Leather Seats,
Sunroof, Aluminum
Wheels, Power Seats,
46,900 Miles,
Charcoal Grey



3.9%
for 60 Months
O.A.C.

SALE \$ 12,500⁰⁰
\$192.90 Per Month*

*2,000.00 Down, Tax and License and Fees Extra, OAC

Thibert's Chevrolet & Buick

Since 1940



www.thiberts.com

Red Lake Falls, Minnesota

(800) 247-CHEV (2438)

R17C

A new way to Play in the Mud.



Compact Track Loaders
from Gehl perform best on
soft, boggy terrain where
other machines would sink.

- High performance hydrostatic drive pumps and motors enhance digging capabilities
- Rubber tracks provide lower ground pressure on muddy terrain, more digging power in dry conditions, and no tires to go at
- High ground clearance
- Big, comfortable cab for hours of productivity
- Easy maintenance with tilt-back ROPS/FOPS and swing-out radiator
- Pilot-operated joystick control



Easy service access



Large, ergonomic operator's cab



High-strength rubber and steel reinforced tracks

NELSON EQUIPMENT

930 Hwy 1 and 59 N, Thief River Falls
218-681-1997 • 888-685-1997
Your Local GEHL Dealer

SALES & RENTAL

GEHL

Energy efficiency: up on the roof

Roofs are perhaps the most important component of an energy-efficient building. Unfortunately, compared with items like doors, windows and lighting, roofs are generally much less durable and much less energy efficient.

Over the lifetime of a building, a roof needs to be replaced an average of four times.

Energy-efficient roof technologies are fairly straightforward. Manufacturers have developed lighter-colored shingles and tiles, usually containing a coating of titanium dioxide, causing them to absorb less heat than a typical asphalt shingle and last twice as long. Since lighter surfaces are easily discolored by fungus, a fungicide coating normally gets added. Many of the new roof coatings are even self-cleaning to retain reflectivity properties and reduce air conditioning requirements.



Lighter-colored roofs are slightly more expensive. However, the small cost difference, \$25 for a 1,000-square-foot roof, will easily pay for itself in one summer.

Roof overhangs are another way to trim summer cooling bills. For many homes and businesses in warmer climates, overhangs reduce solar heat gain and interior temperatures. They can also be designed to let direct sunlight into a living space during winter but keep things shaded in summer.

— Source: U.S. Department of Energy, Energy efficiency and Renewable Energy.

WE ARE YOUR

Harvest '08

HEADQUARTERS!



**NEW HOLLAND & CASE-IH
NEW & USED COMBINES**

All Sizes
Pickup and
Straight
Headers

Get Ready
For
Harvest!

**GRAIN
CARTS**

BUHLER & BRANDT GRAIN AUGERS
New & Used
On Our Lot

NEW & USED ON OUR LOT

**Rem & Brandt
Grain Vacs
New & Used**

*New &
Used*

Haying Equipment

New Holland • Vermeer • EnRossie • Tonutti
Mower Conditioners • Round & Square Balers • Wheel Rakes



Stop in and see
Cecil or Mark
for all your
equipment needs.



Cecil

Mark

Anderson Power Hardware Hank Farm and Home Center

Hwy. 59 North • Thief River Falls, MN

Toll Free: 1-800-888-2744

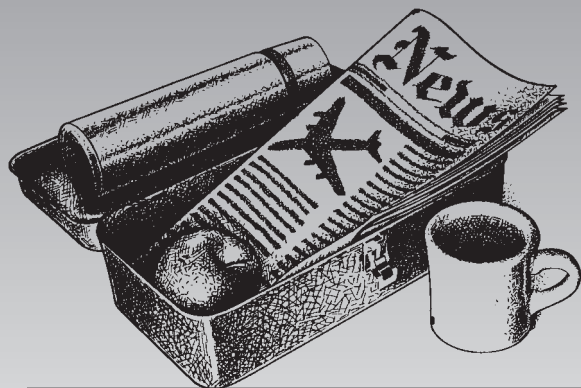
Phone 218-681-1423

e-mail: andersonpower@mncable.net



NEW HOLLAND





Your key to buy, sell or trade anything is the CLASSIFIEDS

The members are invited to use this FREE WANT AD service.

If you have anything to trade or sell, just drop a card to Red Lake Electric Cooperative, Box 430, Red Lake Falls, MN 56750.

Mobile homes

MOBILE HOME FOR SALE – To be moved. 14x70, 3-bdrm., central air, insulated entry. \$5,500. Call 218-253-2939 or 218-686-3005.

For rent

FOR RENT – 26' Wishek disk, good in CRP ground, corn and sunflower stalks. Will do custom disking with CAT or custom CRP mowing. 218-281-1966 or 218-289-3946.

Red Lake County Homes For Sale



#8141
Country home near Terrebonne! Very nice 1,500 sq. ft. rambler with a large front room, nice kitchen and dining area! 1 1/2 baths, could be a 5 bdrm! All appliances included and some furniture could also go with! Large rec/family room, an attached garage, a dble det gar, 2 quonsets, a poleshed, grainery and over 70,000 bushels of steel grain bin storage! Don't miss this one! \$139,000



#8043
REDUCED! Great starter home on huge corner lot infested with mature oak trees! 2 bdrms., full bath, nice colors throughout! Nice decks on front and back! Large bay window in the living room. There are two nice garages and another lawn shed! \$54,900



#7194
REDUCED! 4-level home near Hughes Elementary! 3 bdrms., 1 3/4 bath, walkout patio to the backyard, fireplace in the liv room, large family dining area, rec room, heated attached garage and a 5-year old 30x40 poleshed! All this on 18 city lots loaded with mature trees! \$139,000

For these and other listings, call
Genereux Realty, Inc.
218-681-HOME (4663) or
1-800-447-0382
genereux@mncable.net



www.sollie.net www.sollie.net

Tillable/Pasture

800 Acres, Clover, Mah
139 Acres, Winger, Polk
120 Acres, Gervais, RLC
120 Acres, LaPrarie, Clwr
120 Acres, Winsor, Clwr
117 Acres, Pine Lake, Clwr
80 Acres, Winsor, Clwr
*94 Acres, Columbia, Polk
*40 Acres, River Falls, Penn

CRP ACREAGE

720 Acres, Cloverleaf, Penn
*320 Acres, Gervais, RLC
276 Acres, Badger, Polk
240 Acres, Badger, Polk
200 Acres, Gully, Polk
190 Acres, Equality, RLC
160 Acres, Greenwood, Clwr
155 Acres, Gervais, RLC
144 Acres, Badger, Polk
120 Acres, Hickory, Penn
80 Acres, Gervais, RLC
80 Acres, Grinstead, Ros
80 Acres, Winsor, Clwr

***NEW LISTINGS!**
Call or view on web
for full details!

Sollie Realty

Fosston, MN
218-435-1525
www.sollie.net

Equal Housing Opportunity

www.sollie.net www.sollie.net

SCHAFAER ELECTRIC

BRIAN SCHAFAER
218-289-5430
CELLULAR

MIKE SCHAFAER
218-289-5431
CELLULAR

16483 120th Avenue SW
Red Lake Falls, Minnesota 56750
Office 218-253-2497

COMMERCIAL TRENCHING RESIDENTIAL FARM

For sale

MOTORCYCLE FOR SALE – 1993 Yamaha Virago 1100. In good shape. Asking \$1,600. Call 218-253-2443. 47p

FOR SALE – Motorcycle carrier that fits on bumper, can also be used for bikes. Call 218-796-5259.

FOR SALE – 7-ft., 3-pt. cultivator. Enclosed deer stand, 4'x6', all windows open, \$450. Ph. 218-681-2109.

Miscellany

THE GAZETTE NOW CARRIES – Quarter-fold-size envelopes for computer-generated greeting cards. The Gazette in Red Lake Falls, 253-2594. xf

COLOR COPIES – Now available at the Gazette in Red Lake Falls, 253-2594. xf

PRINTING – Check with the Gazette for all your printing needs. No job is too big or too small. The Gazette, 253-2594, Red Lake Falls, MN. xf

Wanted

WANTED – Mark V Mercury outboard motor for parts. Need not run. 218-280-1380.

Wanted to buy

WANTED TO BUY – 1,000-gal. propane tank. Also loader for 7000 Ford tractor. 218-686-4687.

DON'S SEWING & VACUUMS

307 1st St. E in Thief River Falls
Mon.-Fri., 9-5:30. Closed 12-1 p.m. for lunch.
Simplicity sewing machines and vacuums now sold here.
Lamp and small appliance repair.
SALES AND SERVICE • NEW AND USED
Parts and service for all makes and models
218-681-8664

Burns Welding and Repair

- Skid-steer loader rental
- Farm machinery repair
- Custom cattle gates built to your needs
- Custom size hay feeders
- Portable welding
- Aluminum welding and tig welding

CALL SHOP
218-964-5444

Paying Top \$\$\$ For:

- Scrap Iron • Cast • Aluminum • Brass • Copper
- Stainless Steel • Electric Motors • Aluminum Cans

*Call today for prices on New and Used Steel
Will do Special Orders!*

Phillips Iron & Metal Inc.
1107 Main Avenue N., Thief River Falls, MN 56701
681-4231 www.phillipsiron.com

NEW SPRING HOURS
Mon. - Fri.
8:00 To 12:00
and 1:00 - 5:00
Sat. 8:00 To 12:00

**READY MIX CONCRETE,
SAND & GRAVEL.**

We Have Heated Ready Mix For Year Around Jobs.

RADIO DISPATCHED TRUCKS
NO JOB TOO BIG OR TOO SMALL!

CONCRETE Inc.
St. Hilaire, MN

CONCRETE INC.
964-5237

EPOXY FLOOR COATINGS

For shop, garage, basement floors and many other surfaces. All cracks and areas are leveled and repaired prior to coating. Have an easy-to-clean and maintain floor installed today.

Call Jeff Pederson at
(218) 681-8004 or email
epoxy@mncable.net

LUMBER AND Building Supplies

**ASK ABOUT
OUR COMPLETE
BUILDING PLANS
SERVICES!**

We're glad to help you with
any building problem you
may have.

**Oklee
Lumber, Inc.**
(218) 796-5131

VISA MasterCard

CARPET ETC.

OF ST. HILAIRE

LOW PRICES.
STOP AND
COMPARE!

EXPERT ADVICE
AND
INSTALLATION

CARPET • VINYL • LAMINATE • CERAMIC TILE

On Highway 32 • St. Hilaire • 218-964-5555 • FREE ESTIMATES

OPEN
Mon.-Fri., 9-5:30
Sat., 9-3

Residual Materials, Inc.

We Buy . . .

- Aluminum
- Brass
- Copper
- Steel
- Stainless Steel

222 Red Dot Place, Grand Forks, ND 58203
(701) 746-9381
fax (701) 772-2008

Lucken Corp.

23125 430th St. SE, Winger, MN 56592

WANTS YOUR SCRAP!

CASH\$\$\$ CASH\$\$\$ CASH\$\$\$

WE ALSO DO CAR CRUSHING, TIN BALING AND FARM CLEANUP
WE NOW HAVE AN ON-SITE CERTIFIED SCALE.
WE BUY ALL FERROUS AND NONFERROUS IRON AND METALS

- Prepared steel
- Radiators
- #1 and #2 cast
- Aluminum
- Brass
- Aluminum transmissions
- Tin
- Stainless steel
- Batteries
- Lead
- Unstripped motors
- Die cast
- Car bodies
- Copper

LUGGER SERVICE AVAILABLE

FILLING LIQUID OXYGEN
Call 800-874-4107

Ask for Jeff or email jeff@luckentrucks.com
Hours: M-F, 8 a.m.-6 p.m. Sat., 8-noon

OFFICE/ACCOUNTS MANAGER ADVERTISING SALES REP POSITION

The Gazette seeks a self-motivated and energetic individual for our full-time Ad Sales and Accounts position. Candidates will need to have good communication and computer skills and have some bookkeeping experience. The position will also include fill-in reporting, photography and general office duties. Pick up an application at 105 Main Ave., Red Lake Falls, or send resume to the Gazette, PO Box 370, Red Lake Falls or email to rlfgaz@gvtel.com.

THE

GAZETTE

105 Main Ave. • Red Lake Falls • 218-253-2594

Self-Inking Stamps

Available at the Gazette

Self-Inking Stamps are the perfect choice!
Signature, address, professional, logo
and much more! Available in a variety of
sizes and are completely customizable for
your personal or business needs.
We also do notary stamps.

Call the Gazette at 218-253-2594 or
email rlfgaz@gvtel.com for pricing
and additional information.

THE
GAZETTE

We Buy Cars and Car Bodies

We Sell Welding Supplies

We Buy Scrap Iron and Metals

Paying Cash for Aluminum Cans

We Sell New Steel - Structural and Sheet

Evans Scrap & Steel, Inc.
218-681-3488 • Toll Free 1-800-906-3488
13203 190th St. N.E. • Thief River Falls, M.N.

Winter Hours:
8-5 M-F
Sat. By Appt.

Red Lake Electric Cooperative

Want Ad Order Form

Use this handy form to submit your want ads.

PLEASE PRINT.

Mail or bring your ads to the RLEC office by the tenth of the month. Commercial ads are 10¢ per word with a minimum charge of \$4 per insertion.

Member want ads are FREE. One want ad per member per month.

Please PRINT . . .

Your Name, Address and Phone Number. Mail with your power bill payment, if you prefer, or fax to 218-253-2630.



Hunter Larson of Euclid was the recipient of the dairy top production award at the Pennington County Fair held in Thief River Falls. The award has been sponsored by Red Lake Electric Cooperative for several years. He is a member of the Silverton 4-H Club and the son of Spencer and Nancy Larson. TRF Times Photo



The beef rate-of-gain award sponsored by Red Lake Electric Cooperative at the Pennington County Fair was won by Samantha Larson of Euclid. She is the daughter of Nancy and Spencer Larson and a member of the Silverton 4-H Club.



Mikayla Miller was the champion junior horse showman at halter at the Red Lake County Fair. The Red Lake Falls resident received an award on behalf of Red Lake Electric Cooperative. David and Peggy Miller are her parents. She is a member of the Huot Hustlers 4-H Club.



Above: Mikayla Miller was the champion junior beef showman at the Red Lake County Fair. The Red Lake Falls resident received a cash award sponsored by Red Lake Electric Cooperative. David and Peggy Miller are her parents. She is a member of the Huot Hustlers 4-H Club.



Left: Samantha Larson of Euclid won the sheep rate-of-gain award at the Pennington County Fair July 10 through 13. This award is sponsored annually by Red Lake Electric Cooperative. The daughter of Nancy and Spencer Larson is a member of the Silverton 4-H Club.

AUTO PAY OFFERED BY RLEC

Red Lake Electric Cooperative is pleased to offer you Auto Pay. Now you can have your monthly energy bill paid automatically from your checking or savings account. You can receive the Auto Pay service by completing the Auto Pay sign-up sheet and returning it to Red Lake Electric Cooperative.

The Auto Pay service is free of charge. Not only is this service free, you will eliminate the expense of writing a check, postage to mail your payment and no more late payment penalties because your bill will be paid on time, every month, for you.

Your payment will be automatically made for you on the 5th of each month. If the 5th falls on a week-

end or holiday, the payment will be made on the next business day. You will continue to receive your monthly energy bill as you have in the past, indicating the amount that will be withdrawn from your bank account. The proof of your payment will appear on your bank statement and your next month's energy bill statement.

Continue to pay your monthly bill until you are notified on your bill that the Auto Pay has been set up for you.

If you have any questions about the Auto Pay please call RLEC at 800-245-6068 or 218-253-2168.



McMullen Auctioneers AUCTION



~ of ~

Elwood Ehrenstrom Construction

Thief River Falls, MN • Phone: 218-681-5545

Location: US Hwy 59 SE, Thief River Falls, MN, directly behind the Oil Boyz, across from Kmart. Location will be marked.

Saturday, July 26, 2008

TIME – 10 AM

Lunch Served

TRACTOR & TRUCKS

C Allis Chalmers, wide front, 9x24 tires
1978 GMC Sierra 6500, big block V8, 5 & 2-spd., 20' steel bed & hoist, 9-00x20 tires
1992 Chevy 2500, 2WD, 350 V8, auto., w/utility box, 93,000 actual miles

OTHER EQUIPMENT

25 ft. trailer w/20ft. bed & 3 ft. beavertail w/ramps, dually tandem axles w/245-75R-16 in. tires equipped w/ hyd. winch, shop built, heavy duty
38 ft. enclosed trailer for storage w/side door
2-wheel cable roller w/Misc. engine, elect. start (lg. wooden spools)
Large 1 bottom breaker plow w/knife & tail wheel
1 bottom breaker plow w/knife & tail wheel
Fuel barrel w/stand
Fuel service tank w/12 volt pump

Pile driving set
MTD push mower

SHOP EQUIPMENT

Sand blaster model 100
Koehring packer w/gas engine
Vibrator for concrete
Assortment of hyd. jacks
2 anvils, Large 6 in. vise
Various sizes of side grinders
Various sizes of electric drills
Assortment of air tools, impacts, sanders
Pipe benders, Pipe cutters in assorted sizes, Pipe fittings
Assortment of mics in various sizes
Stainless steel calipers
40 pc. tap & die set
Large assortment of drill bits
Assortment of open & box end wrenches up to 2 in.
Assortment of sockets, saws, crow bars, hammers, screw drivers
Magnetos, Starters, Generators
Various sizes of electric motors and Gas engines
Welding table, rods, helmets, clamps
Metal sawhorses, Creepers, Stepladders
Metal cabinets from Kar products w/brass fittings, bolts, etc.
Bolt bins, Toolboxes
Assortment of log chains & hooks, Chain binders
Drag line chain
Assortment of hyd. hoses
Hyd. pump & controls
2 in. transfer pump w/gas engine
3 in water pump w/gas engine
Aermotor well pump
90 weight oil barrel w/pump
Grease pall w/ pump
Cat greaser
Transit w/tri-pod and measuring stick
Jonsered chain saw
Metal rack, Metal pieces
Assortment of truck tires, 900.20, 8.25x15 tires
Shop manuals
Office desk, chairs, filing cabinets

Kenneth Berg Items

TRUCK & TRAILER

2004 Ford F150 Lariat, Crew cab, 5.4 Triton, V8, auto., 4x4, full power, 48,000 miles
25 ft. trailer w/20 ft. bed w/ramps. tandem axle, shop built

RECREATIONAL

2000 Arctic Cat 500 4 wheeler w/winch
1947 14 ft. boat & trailer
9-1/2 hp Johnson motor, short shaft
8 in. & 10 in. gas powered ice auger/post hole digger combination

SHOP TOOLS

Craftsman 14 in. table saw w/10 in. blades
Sears model 306 12 in. planer w/extras
Rockwell Delta 12 in. band saw
Skil belt sander
Skil router
Craftsman roofer
2 in. water pump
3/4 in. socket set
Gas lawn trimmer
Electric animal call w/tapes

Skil 8 in. saw
B & D belt sander
Handyman jacks
2-20 ft. log chains
Pipe & crescent wrenches
Gas blower
Plus more misc.

CALL ON US – "The Auction Team That Goes To Work For You"



Joe McMullen
(218) 686-5760
Lic. #63-1



Scott McMullen
(218) 681-7650
Lic. #57-34



Jen (McMullen)
Twiflex
(218) 686-4009
Lic. #57-30

Complete Professional Auction Service

TERMS Cash Or Check. Nothing to be removed until paid for. All sales final. Owners, auctioneers and clerks take no responsibility for errors or omissions in advertising or on items in auction. Bidding. Statements made after day take precedence over all advertising. Not responsible for accidents.

This Auction Conducted, Managed & Clerked By

McMullen Auctioneers

THIEF RIVER FALLS, MN • (218) 681-3960

View additional photos at www.mcmullensales.com • email: mcmullensales@mnccable.net

AUTO PAY

SIGN-UP SHEET

I authorize Red Lake Electric Cooperative (RLEC) and the bank listed below to initiate variable entries to my checking or savings account. This authorization remains in effect until I notify RLEC in writing to cancel it in such time as to allow RLEC to act on it.

RLEC ELECTRIC ACCOUNT # _____

NAME (PRINT) _____

ADDRESS _____

TELEPHONE # _____


NAME OF FINANCIAL INSTITUTION _____

CHECKING ACCOUNT # _____

SAVINGS ACCOUNT # _____

SIGN HERE TO AUTHORIZE _____

Please return this authorization form with a blank, voided check to:
Red Lake Electric Cooperative, P.O. Box 430, Red Lake Falls, MN 56750



Red Lake Electric Cooperative, Inc.

One of the Minnkota Power Systems

Phone	218-253-2168
Toll-free	1-800-245-6068
Fax	218-253-2630
After-hour outage	218-253-2200
Office hours	Monday-Friday, 8:00-4:30
E-mail:	redlake@minnkota.com
Web site	www.redlakeelectric.com

P. O. Box 430 • 412 International Drive SW • Red Lake Falls, MN 56750-0430