



JULY/AUGUST 2017

Volts & Jolts

Published monthly for the members of Red Lake Electric Cooperative, Inc.

One of the Minnkota Power Systems

SERVING THE FOUR-COUNTY AREA OF MARSHALL, PENNINGTON, RED LAKE AND POLK
and a portion of the lands of the Red Lake Band of Chippewa



Trees were the main factor in many of the outages that occurred during the June 13 storm. Red Lake Electric would like to have 20 feet on each side of the powerline clear of trees.

June storm causes widespread outages

On June 13, 2017, Red Lake Electric was impacted by a storm that rolled through its service area with straight-line winds. This storm knocked out power to more than 1,150 Red Lake Electric members, beginning at 10 a.m. The storm was widespread throughout Red Lake's service territory, causing power outages to members served in eight of the nine substations that feed power to the membership. Red Lake Electric had all the crews involved in the restoration and had power restored to everyone by 10 p.m.

Then, a second wave of lightning and wind came through, this time knocking out power at the Gentilly Creek substation that serves members in the Crookston area. In addition, scattered individual outages occurred during the second wave of storms. Power was restored (3823007.01 Vernon D. Dokkin) from that event by 2 a.m.

Red Lake Electric would like to thank the members for their understanding and patience during the restoration, and to those callers who provided information helpful in identifying trees on the line or other electrical problems.

Red Lake Electric would also like to recognize those members who allow the Cooperative crews to perform meaningful brushing of trees on their property when doing preventative maintenance brushing; it makes a difference in helping prevent outages when the weather turns bad.

Operation Round Up® grant applications due Sept. 8



Organizations involved in community projects and charities are encouraged to apply for funds from Operation Round Up. Completed grant applications are due in the Red Lake Electric Cooperative (RLEC) office by Friday, Sept. 8, 2017.

Operation Round Up is a program adopted by RLEC headquartered in Red Lake Falls. Members choosing to "round up" their monthly electric bill payment provide funds for this effort. Today 96 percent of RLEC members now choose to contribute pennies each month to enhance their communities.

Funds will be donated primarily to nonprofit organizations to help fund specific projects or programs. Since the program began in 1993, \$500,916 has been granted to community organizations and charities. Money is donated for the betterment of the community within the outside service area boundaries of RLEC.

The Red Lake Electric Trust board of directors determines grants. Board members are Diane Kolstoe, Oklee; Julie Stennes, Thief River Falls; Tishara Melcher, Middle River; Roger Johanneck, Red Lake Falls; and Randy Versdahl, Red Lake Falls.

To apply for Operation Round Up grants, organizations should contact the RLEC office in Red Lake Falls at 218-253-2168 or 800-245-6068. A short application must be completed (2331002.03 Burdell Engen) and submitted along with a financial statement from the organization.

Grant application forms are available on the Cooperative's website: www.redlakeelectric.com.

For more information, contact Roger Johanneck, general manager of RLEC, at 218-253-2168 or 800-245-6068.



Volts & Jolts

JULY/AUGUST 2017 – Vol. 52, No. 9

OFFICIAL PUBLICATION OF

Red Lake Electric Cooperative, Inc.

P.O. Box 430 • 412 International Drive S.W.

Red Lake Falls, MN 56750-0430

(USPS 663-400)

Subscription rate: \$2.50 per year

This institution is an equal opportunity provider and employer.

Published 10 times a year, January through May, July and September through December, by the Red Lake Electric Cooperative, Inc., in the interest of its members and others. Periodical postage paid at the U.S. Post Office in Red Lake Falls, Minnesota 56750. POSTMASTER, SEND ADDRESS CHANGES to Volts & Jolts, c/o Red Lake Electric Cooperative, Inc., P.O. Box 430, Red Lake Falls, Minnesota 56750-0430. Email: redlake@minnkota.com.

OFFICERS AND DIRECTORS

President Randy Versdahl
Vice President Stacy Blawat
Secretary-Treasurer Mark Hanson
Directors Aaron Chervestad,
Bonnie Christians, Robert Finstad,
Colette Kujava, Steve Linder, Peter Mosbeck

Roger Johanneck General Manager
Shirley Bregier Manager of Finance
& Administration
Steve Conely Manager of Electric
System Operations
Kelli Brateng Manager of Member Services

OFFICE HOURS

Monday-Friday
8 a.m. – 4:30 p.m.

Phone: (218) 253-2168
Toll-Free: 1-800-245-6068
Fax: (218) 253-2630



AFTER HOURS/OUTAGE CALLS 218-253-2200

Website: www.redlakeelectric.com
Email: redlake@minnkota.com

CALL BEFORE YOU DIG
1-800-252-1166 or 811

MINNESOTA STATE ELECTRICAL INSPECTORS

Northwest corner of Polk and western Marshall Counties:

Wayne Bergstrom – 701-520-9771

Pennington and eastern Marshall Counties:

Bryan Holmes – 218-686-1413

Red Lake and most of Polk Counties:

George Stage – 701-306-3511

Any time you or an electrician does wiring or other electrical work at your home or farm, Minnesota state law requires a state wiring inspector to conduct a proper inspection of the work. A rough-in inspection must be made before any wiring is covered. A final inspection is also required. Please visit www.dli.mn.gov for more information. The inspectors can be reached week-day mornings between 7:00 a.m. and 8:30 a.m.

OUR MISSION STATEMENT

It is the mission of Red Lake Electric Cooperative to enhance the quality of life for people of our service area by safely and consistently providing quality electric service and other valued services while holding our employees, our community and our environment in high regard.



Manager's Comments

by Roger Johanneck



New standby generator program

The June 13 storm recap included elsewhere in this issue of the *Volts & Jolts* is our most recent large scale reminder of how quickly severe weather can impact Red Lake Electric's ability to provide service to our membership. It was also a reminder to members of how daily routines are inconveniently changed when the power goes out. About one out of every four of our members were affected by power interruptions this wind storm created.

Typical reactions to widespread power outages like this storm created are these:

- 1) Members call in requests to have more brush and trees cleared from the Cooperatives overhead powerlines and equipment. Thank you – we appreciate these calls.
- 2) Members call in and request a double-throw loop to accommodate a portable backup generator hook-up. We are happy to accommodate these calls too.

In 2016, average service interruption experienced by our members was half of what was experienced in 2015. Coincidentally, the number of double-throw loop generator hook-up installations requested by members in 2016 was exactly half of what members requested in 2015.

This cause and effect relationship to power outages and member requests for additional tree trimming and generator hook-up requests has been going on for ... well, a long time. One could conclude that, as storms keep occurring, eventually all members will end up with some sort of backup generation. Today, one in three Red Lake Electric members have a double-throw meter loop/standby generator connection (3124004.02 Scott Hamilton) as part of their electric service.

We have heard from members who have said, that while a portable generator is a handy tool as a backup to ride out the untimely power outage, it sure would be handy to have an automatic standby gen-

erator instead: a standby generator that would automatically start up when power from Red Lake Electric is interrupted; a standby system that would end the angst about whether one should make the effort to hook up, fuel up and start up the portable generator or wait a little longer to see if the power comes back on and avoid the portable hook-up routine.

We agree with those of you who think an automatic backup system would be a good option. At its June board meeting, your Cooperative's board of directors approved our recommendation to offer an automatic standby generator program for our membership. We will soon have available for our members a state-of-the-art automatic generator system built by Briggs & Stratton. Technology today has made automatic start-up and power transfer switching an affordable option, and Briggs & Stratton is a leader in this type of equipment.

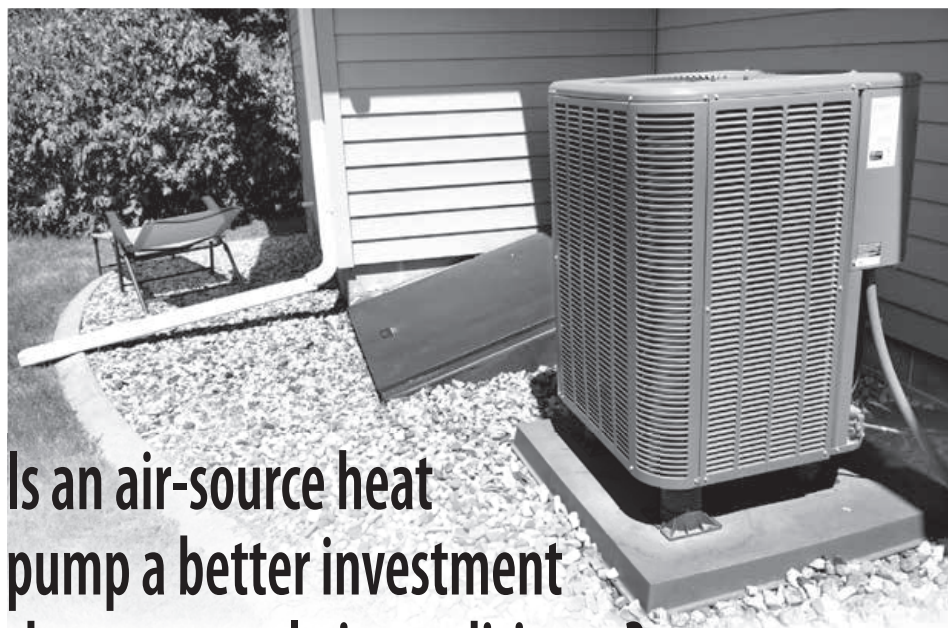
About the time this issue of *Volts & Jolts* reaches your mailbox, employee training will be completed that will enable us to offer sale and installation of these units. At the risk of putting the cart before the horse in announcing this new program offering to our members, your Cooperative wanted to get the word out ASAP because we know some of our members are considering a purchase of a standby generator.

You might have asked yourself, what you could do differently, if anything, to avoid or minimize the inconvenience caused when the power goes out. Certainly having a backup generator goes a long way toward minimizing those inconveniences. An automatic back-up system from Red Lake Electric Cooperative will minimize the risk and inconvenience even more. Watch for more information coming soon on our website and Facebook or give us a call if you are interested in learning more about our new standby generator program.



Member Service Department

by Kelli Brateng



Is an air-source heat pump a better investment than a central air conditioner?

A central air conditioner (CAC) will cool and dehumidify your home, but that is the extent. It is a piece of equipment that will be utilized off and on over a three-month period if we experience hot, humid weather.

An air-source heat pump (ASHP) will cool and dehumidify your home and will also provide you approximately 50 percent of your home's heating needs. It's a piece of equipment that will be used nine to 10 months per year.

The initial investment for an ASHP is greater than a CAC, but the payback on the additional investment will be just a few years. This is possible because of the efficiency of the heat pump; an ASHP will operate at 200 percent efficiency.

By adding a warm-flo plenum heater, the heat pump will provide a much greater percentage of your home's heating needs. Couple this with a fossil fuel (4214001.02 David Huber) furnace to take advantage of

Red Lake Electric's off-peak electric heat rates and you'll have a very economical heating system.

Remember, Red Lake Electric is offering rebates on qualified HVAC systems, see the back page.

Let's not forget about our homes that don't have ductwork installed. A mini-split heat pump (MSHP) might be just the thing for you, which will also qualify for a rebate.

If you have any questions on HVAC equipment or rebates, call us at 218-253-2168 or 1-800-245-6068.



Mini-split heat pumps are popular for homes without existing ductwork. The indoor units are positioned high on the wall and come in a variety of designs to match your existing decor.

Recipe Corner



Submit your recipes to be published in *Volts & Jolts*. Email to redlake@minnkota.com or mail to: Red Lake Electric Cooperative, PO Box 430, Red Lake Falls, MN 56750.

Grilled Shrimp Boil Packets

Servings: 4 servings

- 1 lb. baby or small red potatoes, sliced into 1/4-inch thick slices
- 2 ears corn, shucked and sliced into 1-inch thick disks
- 2 (4 oz.) chicken or turkey cajun style andouille sausage links, sliced into 1/4-inch thick slices
- 1 lb. large raw shrimp, peeled and deveined
- 6 tbsp. butter, diced into 1 tbsp. pieces
- 2 tbsp. fresh lemon juice
- 2 tsp. chopped fresh thyme leaves
- 2 cloves garlic, minced
- 2 tsp. seafood seasoning, such as Old Bay
- 2 tbsp. chopped fresh parsley leaves

Preheat a gas grill over medium-high heat to about 450 degrees. Cut eight sheets of 12-by-14-inch aluminum foil. Use two sheets of foil per packet. Divide potatoes among each of the four double lined foil sheets (layering ingredients in center), followed by corn, sausage and shrimp.

Melt butter in a microwave safe dish in microwave. Stir in lemon juice, thyme and garlic. Divide butter mixture among packets drizzling about 2 tablespoons evenly over each. Sprinkle each with about half a teaspoon of the seasoning. Wrap up sides of first sheet of foil, then place second sheet going opposite length and wrap while crimping edges to seal. Grill sealed side up about 15 minutes or until potatoes are tender and shrimp have cooked through. Serve warm garnished with parsley.



Red Lake Electric Cooperative's headquarter facility will be closed

Monday, Sept. 4

in observation of Labor Day.

In case of an electrical outage or emergency, dial the after-hour phone number, 218-253-2200.

RLEC announces

Scholarship **RECIPIENTS**



Each year, Red Lake Electric Cooperative provides scholarships for graduating seniors at each of the high schools operating throughout the Cooperative's service area. The recipients are selected by the scholarship selection committee of the recipients' high school. There were 18 recipients this year with each student receiving \$500. The funds for these scholarships come from unclaimed capital credits. Congratulations and best wishes to these scholarship recipients!



Natalie Aakhus
Red Lake County Central
High School
Jason & Roberta Aakhus
Red Lake Falls



Morgan Anderson
Marshall County Central
High School
Ryan Anderson & Kristi
Audette
Newfolden



Jessica Benke
Greenbush-Middle River
School
Jeff & Dawn Benke
Newfolden



Heather Chaput
Crookston High School
Edward & Cherie Chaput
Red Lake Falls



Kennedy Cwikla
Crookston High School
Paul & Allyson Cwikla
Crookston



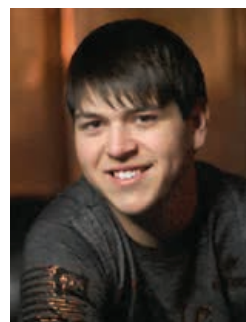
Gabriel Holte
Lincoln High School
Bruce & Lynae Holte
Thief River Falls



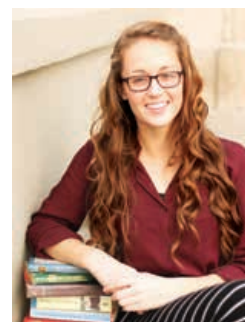
Brandon Kolstoe
Lafayette High School
Christopher & Nancy Kolstoe
Red Lake Falls



Grace Matter
Lincoln High School
Ralph & Mary Matter
Thief River Falls



Nolan Nelson
Marshall County Central
High School
Gregg & Kim Nelson
Newfolden



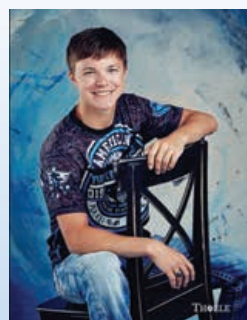
Sarah Quick
Lincoln High School
Roy & Elizabeth Quick
Plummer



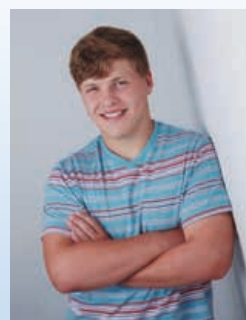
Shawna Spears
Lincoln High School
Mike & Kami Spears
Thief River Falls



Jessica Thompson
Win-E-Mac High School
Patrick & Sherri Thompson
Red Lake Falls



Jeremy Wiskow
Goodridge High School
Dean & Sheila Wiskow
Goodridge



Peter Zaviska
Lincoln High School
Russell & Susan Zaviska
Thief River Falls



New Electrical Inspectors and Districts for Red Lake Electric's service area



Annah Harder
Lincoln High School
Greg & Penny Harder
Thief River Falls



Ashlyn Henrickson
Goodridge High School
Paul & Kristy Henrickson
Goodridge



Nicole Schmitz
Red Lake County Central
High School
Nancy Schmitz and the late
Jake Schmitz
Plummer



Kelly Schultz
Lafayette High School
Lyndon & Lori Schultz
Red Lake Falls

		Huntly 5		Como 4											
West Valley 10		New Maine 11		Spruce Valley 12		Cedar 13		Whiteford 14							
Marsh Grove 23		New Falden 22		Holt 21		East Valley 20		Mud Lake 19		Eckvold 18		Valley			
Viking 26		New Solum 27		Excel 28		Agder 29		Grand Plain 30		Moylan 31		Espelie 32			
Numedal 39		Norden 38		North 37		Silverton 36		Cloverleaf 35		Goodridge 34		Reiner 33			
Bray 42		Sanders 43		Rocksrbury 44		Smiley 45		Kratka 46		Highlanding 47		Star 48			
Belgium 56		Polk Centre 55		Black River 54		River Falls 53		Wyandotte 52		Mayfield 51		Deerpark 50		Hickory 49	
		Wylie		Browns Creek		River									
Parnell 57		Louisville 58		Red Lake Fls 59		Gervais 60		Emardville 61		Games 62		Equality 63		Johnson 64	
Crookston 72		Gentilly 71		Lake Pleasant 70		Terrebonne 69		Poplar River 68		Lambert 67		Chester 66			
Fairfax 73		Kertsonville 74		Tilden 75		Grove Park 76		Badger 77		Lessor 78		Hill River 79			
Russia 88		Onstad 87		Red Lake Electric Cooperative, Inc.											
Wayne Bergstrom 701-520-9771		Far NW corner of Polk County, Marshall County from Hwy 32 West and all of Kittson County													
Bryan Holmes 218-686-1413		All of Pennington County, Eastern Marshall County and all of Roseau County													
George Stage 701-306-3511		Most of Polk County and all of Red Lake County													
Terry Lane 218-252-8467		All of Clearwater County, Mahomen County and Eastern Becker County													
Lowell Bradbury 218-342-3345		Region District Representative													
		lowell.bradbury@state.mn.us													

FOR SALE ON BIDS: 2002 Slabach Pole Trailer



GVW 9,000 lbs., pintle hitch
Trailer tongue has been repaired
at a welding shop.

Trailer can be seen at Red Lake Electric
during normal business hours.

**Please submit bids to Red Lake Electric Cooperative
by 10 a.m. Aug. 4, 2017.**





Annual pole inspection has started!

Red Lake Electric has contracted RAM Utilities to test poles within our service territory. They will be checking the four bays out of the Hazel substation. This will include parts of Rocksbury, Smiley, Kratka, River Falls, Mayfield and Wyandotte townships in Pennington County; and River and Emardville townships in Red Lake County. RAM Utilities will use ATVs to travel (3521010.01 Richard G. Merrill) from pole to pole. These vehicles will be equipped with RLEC signage to make them recognizable. If you have questions concerning this pole inspection, please call the office at 800-245-6068.

NOTICE OF NAMES

Hidden within the text of the articles of this issue of the *Volts & Jolts* are the names and account numbers of some Red Lake Electric Cooperative members. They will appear within the articles in parentheses as such (999999.99 Willie Ray Member). If you find your name and account number, clip it out and send it with your next payment. You will be credited with \$5 on your electric bill.



Through the Infinity Renewable Energy program, you can decide how much of the electricity you purchase is generated by renewable resources.

Contact RLEC today to learn more about the program.

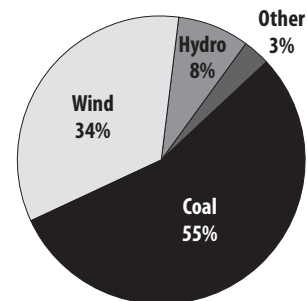
QUICK TAKES

A look at some statistics from your Red Lake Electric Cooperative

Where Your Power Comes From

Coal and wind provide the majority of Minnkota's energy capacity resources. About 55 percent of Minnkota's energy capacity comes from coal, while about 34 percent comes from wind. The Langdon and Ashtabula Wind Energy Centers are located in eastern North Dakota. When you include hydro, about 42 percent of Minnkota's energy capacity comes from renewables. The hydro allocation comes from the Garrison Dam in western North Dakota.

	(kilowatts)
Milton R. Young Station – Coal	
Young 1	250,000
Young 2 (78%)	355,000
Coyote Station – Coal (30%)	128,100
Wind	
Infinity	1,800
Langdon Wind Energy Center	139,500
Ashtabula Wind Energy Center	217,500
Oliver III Wind Energy Center	100,000
Garrison Dam – Hydro	108,800
Other	35,000
Total power supply resources	1,335,700



Plant the right tree in the right place

Trees beautify our neighborhoods and when planted in the right spot, can even help lower energy bills. But the wrong tree in the wrong place can be a hazard ... especially to power lines.

LARGE TREES

Height/spread of more than 40 feet, such as:

- Maple
- Oak
- Spruce
- Pine
- Birch
- Sweetgum
- Linden

MEDIUM TREES

Height/spread of 25 to 40 feet, such as:

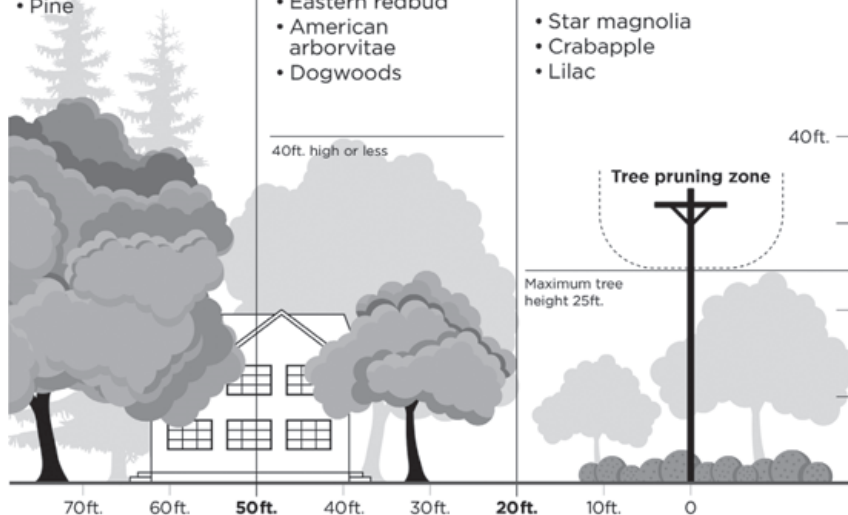
- Washington hawthorn
- Goldenrain tree
- Eastern redbud
- American arborvitae
- Dogwoods

SMALL TREES

Avoid planting within 20 feet of power lines. When planting within 20 feet is unavoidable, use only shrubs and small trees.

Height/spread of no more than 25 feet such as:

- Star magnolia
- Crabapple
- Lilac



Be safe! Always call 811 before you dig to locate any buried utility lines.

Source: The Arbor Day Foundation and the National Rural Electric Cooperative Association.



Cards of Thanks

Thank you for the Red Lake Electric Cooperative Scholarship. It was greatly appreciated and it will be very helpful as I further my education at Bemidji State University in the accounting field.

Heather Chaput, Crookston High School

Thank you so much for the scholarship. It will help me as I attend Northland in East Grand Forks in the fall.

Nicole Schmitz, Red Lake County Central

Thank you so much for the scholarship. It will be put to good use when I go to NDSU this fall. I'm grateful for all of your support.

Nolan Nelson, Marshall County Central

I would like to express my sincere gratitude for your generosity in funding the Red Lake Electric Scholarship. I feel very fortunate to have been chosen as a recipient. I plan to attend Concordia College with a major in biology or neuroscience and a minor in Spanish.

Natalie Aakus, Red Lake County Central

Thank you for awarding me the Red Lake Electric Cooperative Scholarship. I will use it when I attend the University of Minnesota – Twin Cities in the fall.

Brandon Kolstoe, Lafayette High School

Thank you for the generous scholarship. It is greatly appreciated and will be very helpful while furthering (3711003.04 Maxine Olson) my education at Minnesota State.

Kelly Schultz, Lafayette High School

I would like to let you know how much I appreciate your generous scholarship. I am incredibly thankful for your generosity and hope you realize your impact on me.

Peter Zaviska, Lincoln High School

Thank you for the scholarship. I will be attending University of Minnesota Duluth to become a speech pathologist. I appreciated the support in continuing my education.

Sarah Quick, Lincoln High School

Thank you for awarding me the Red Lake Electric Cooperative Scholarship. I deeply appreciate your contribution for helping me further my education.

Gabriel Holte, Lincoln High School

Thank you for the scholarship. It is great to have such a supportive community with groups like you who donate to these scholarships. The scholarship will be used next year when I attend the University of Northwestern

in St. Paul, where I will pursue my degree in elementary education.

Shawna Spears, Lincoln High School

I am sincerely honored to be one of the recipients of the Red Lake Electric Cooperative Scholarship. The money awarded will be put toward my education at Northland Community and Technical College to finish my generals and major in radiologic technology.

Jessica Thompson, Win-E-Mac High School

Thanks for putting together another great annual meeting. Information, food and prizes were great. The Carhartt sweatshirt I won is great for the late-arriving spring.

Ila Anderson, Thief River Falls

Thank you for your donation to the Red Lake County Central Post Prom Party. Your generosity is truly appreciated.

Red Lake County Central Students

We would like to thank you for your donation to our after-prom celebration that was held on April 29. Events like this are made possible by the generous donation from people like you.

Marshall County Central After-Prom Committee

Thank you, without your support we would not have been able to have a wonderful and successful post prom experience.

Lafayette High School, Junior Class

I would like to thank you so much for the donation that you have given to the 4-H Youth Development Program here in Red Lake County. This means so much to the 4-H members. It's a great incentive for them to work hard on their fair exhibits.

*Sharon Weiss, 4-H Program Coordinator
Red Lake County*

Thank you to the crew that came out and trimmed the trees that were getting close to the wires. They did a nice neat job. I appreciate the service.

Donna

Thanks to RLEC Trust:

Thank you for the Operation Round Up grant and donation for the spring regional meeting.

Chief Baker, Plummer Fire Department

Thank you for your generous grant you gave us to provide the entry fee for 3½ to 5 year olds and their parents to the Headwaters Science Center in Bemidji. We had a total of 56 participants from Red Lake County this year. There were a lot of hands-on learning experiences enjoyed by both young and old.

Margrete Hamrum – RLCC ECFE Plummer Site

Wanda Nelson – Red Lake Falls ECFE

Joni Bjerklie – RLCC ECFE Oklee Site & Head Start

I would like to thank you on behalf of the Red Lake Falls Volunteer Fire Department for the generous donation from Operation Round Up funds.

Kathy Schmitz

We can't thank you enough for demonstrating your financial support for Violence Intervention Project (VIP). There are many challenges in providing domestic and sexual violence service to the victims in our five counties of northwest Minnesota.

Sandra Bentley, Executive Director

Thank you for the grant we received for our technology improvements; we appreciated your support.

Falls Diverse Abilities Corporation



Energy Efficiency Tip of the Month

Setting your thermostat to a colder setting than normal when you turn on your air conditioner will not cool your home any faster and could result in excessive cooling and unnecessary expense.

Source: U.S. Dept. of Energy

CLASSIFIEDS

Members are invited to use this FREE WANT AD service.

If you have anything to trade or sell, just drop a card to Red Lake Electric Cooperative, Red Lake Falls, MN 56750.

For Sale

White sewing machine, registered in U.S. Patent office March 20, 1877. Make an offer. 218-689-0036 or 218-222-3605.



**Red Lake Electric
Cooperative Inc.**

Air-source heat pumps

A smart choice for your heating and cooling needs

Looking for a way to heat and cool your home more efficiently? The one system that can do both is an air-source heat pump (ASHP).

By providing super-efficient home heating and air conditioning, an ASHP can help members save significantly on their energy bills. According to the U.S. Department of Energy, ASHPs reduce electricity use related to heating and cooling by up to 72 percent. Since heating and cooling account for more than half of the average home's energy usage, switching to an ASHP can make an immediate impact on home energy usage. And with a wide array of rebates available through Red Lake Electric Cooperative, there has never been a better time to install a new system.



How do ASHPs work?

Unlike a furnace, an ASHP doesn't burn fuel to make heat. It efficiently uses electricity to move heat from one place to another. Think of an ASHP as a heat transporter constantly moving warm air from one place to another, to where it's needed or not needed, depending on the season.

An ASHP works exactly like a central air conditioner in the summer, transferring heat from the inside to the outside. In the winter, a reversing valve allows them to transfer heating from the outside to the inside of the home. Some ASHPs can provide heating in temperatures down to 0 degrees Fahrenheit. The result is that homeowners can run their furnaces less (2734006.04 Garret Reiersen) and get highly efficient and comfortable heating from the ASHP.

ASHPs can work in tandem with an existing furnace. The system will automatically select the most ideal balance between the two sources to maintain the most efficient heating combination based on your desired temperature. A qualified HVAC contractor can provide sizing and estimates based on your home or business.

What options do I have?

Standard – A standard ASHP is a self-contained unit that uses existing ductwork to both heat and cool. The system has two main

components: an outdoor compressor unit and an indoor air handling unit. The two units are linked with refrigerant tubing and a connected electric supply wire.

Mini-split – A mini-split ASHP is an economical and efficient option for homes without an existing ducted system or when adding ductwork may be impractical or too expensive. Similar to a standard ASHP, an outdoor unit is placed outside your home and is connected to an indoor unit by small cables and a refrigerant line. The indoor unit is typically mounted high on the wall of the room and can be preset to run automatically or be adjusted by a remote control.

Member benefits

Whether you're building a new home, remodeling an existing home, or simply buying a new appliance, your cooperative offers professional advice and a wide array of incentives to ensure you get the most for your energy dollar.

When considering a new ASHP, remember that Red Lake Electric Cooperative offers rebates starting at \$400 to help with the initial cost of the purchase. All rebate and incentive programs have certain restrictions and requirements that must be met before a rebate can be issued. Please contact us at 218-253-2168 or 1-800-245-6068, for more information.