



SEPTEMBER 2017

# Volts & Jolts

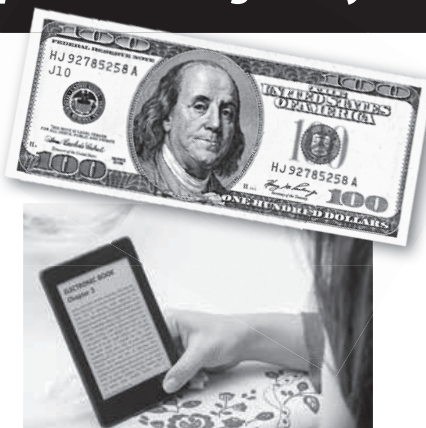
Published monthly for the members of Red Lake Electric Cooperative, Inc.

One of the Minnkota Power Systems

SERVING THE FOUR-COUNTY AREA OF MARSHALL, PENNINGTON, RED LAKE AND POLK  
and a portion of the lands of the Red Lake Band of Chippewa

## Win \$100 or a Kindle Fire Sign up for Auto Pay & paperless billing today!

- Sign up to pay your electric bill with Auto Pay and your name will be entered into a drawing for a \$100 energy credit or a Kindle Fire tablet.
- Sign up for paperless billing and your name will be entered into a drawing for a \$100 energy credit or a Kindle Fire tablet.
- Sign up for both options and you will be entered in each drawing!
- Both drawings will be held Oct. 31, 2017.



Sign up is simple. Go to [www.redlakeelectric.com](http://www.redlakeelectric.com) and click on **Bill4U**. Sign in or set up an account. You can either make a payment on the day of your choice or click on the set up automatic payments to sign up for Auto Pay (or use the form below) and/or sign up for paperless billing. Auto Pay will withdraw the amount of your electric bill on the 25<sup>th</sup> of each month. If you already are an Auto Pay customer, set up an account in Bill4U and sign up for paperless billing. You will receive an email each month when your bill is ready. (4916001.02 Gene R. Arveson) You will then be able to sign in to Bill4U and see your statement. We also have a free app for your smart-phone so you can access your statement wherever you are.

Any questions call 800-245-6068 or email [redlake@minnkota.com](mailto:redlake@minnkota.com).

### Red Lake Electric Cooperative Auto-Pay Sign-up Sheet

I authorize Red Lake Electric Cooperative (R.L.E.C.) and the bank listed below to initiate variable entries to my checking or savings account. This authorization remains in effect until I notify R.L.E.C. in writing to cancel it in such time as to allow R.L.E.C. to act on it.

Name (Print) \_\_\_\_\_ R.L.E.C. Account # \_\_\_\_\_

Bank Name \_\_\_\_\_ Checking or Savings account # \_\_\_\_\_

Sign here to authorize \_\_\_\_\_

☐ Sign me up for paperless billing.

**Please return this sign-up form with a blank voided check to Red Lake Electric Cooperative, Inc.**



**Red Lake Electric  
Cooperative Inc.**

P.O. Box 430 • Red Lake Falls, MN 56750  
Phone: 218-253-2168 • Toll Free: 800-245-6068  
After hours: 218-253-2200



## Mickelson's term ends as Trust Board director

Patty Mickelson, Oklee, has served on the Red Lake Electric Trust Board of Directors since March 2011. Mickelson received a plaque for her years of service. Roger Johanneck, general manager, presented Mickelson with a plaque that reads, "For her service as Director to Red Lake Electric Trust and to her community by effectively and fairly determining Operation Round Up grants totaling \$145,298 to area community organizations from 2011-2017."

### In this month's **Volts & Jolts**

- Page 2** Manager's Comments
- Page 3** Distributed generation; Recipe Corner
- Page 4** 4-H fair exhibitor award winners
- Page 6** Need help to pay your bill?  
Energy assistance
- Page 7** Cards of Thanks; Classifieds;  
Controlled burns can be costly
- Page 8** Rebates

Published 10 times a year, January through May, July and September through December, by the Red Lake Electric Cooperative, Inc., in the interest of its members and others. Periodical postage paid at the U.S. Post Office in Red Lake Falls, Minnesota 56750. POSTMASTER, SEND ADDRESS CHANGES to Volts & Jolts, c/o Red Lake Electric Cooperative, Inc., P.O. Box 430, Red Lake Falls, Minnesota 56750-0430. Email: [redlake@minnkota.com](mailto:redlake@minnkota.com).

**OFFICERS AND DIRECTORS**

President ..... Randy Versdahl  
Vice President ..... Stacy Blawat  
Secretary-Treasurer ..... Mark Hanson  
Directors ..... Aaron Chervestad,  
Bonnie Christians, Robert Finstad,  
Colette Kujava, Steve Linder, Peter Mosbeck

Roger Johanneck ..... General Manager  
Shirley Bregier ..... Manager of Finance  
& Administration  
Steve Conely ..... Manager of Electric  
System Operations  
Kelli Brateng ..... Manager of Member Services

**OFFICE HOURS**

Monday-Friday  
8 a.m. – 4:30 p.m.

Phone: (218) 253-2168  
Toll-Free: 1-800-245-6068  
Fax: (218) 253-2630

**AFTER HOURS/OUTAGE CALLS  
218-253-2200**

Website: [www.redlakeelectric.com](http://www.redlakeelectric.com)  
Email: [redlake@minnkota.com](mailto:redlake@minnkota.com)

**CALL BEFORE YOU DIG  
1-800-252-1166 or 811****MINNESOTA STATE  
ELECTRICAL INSPECTORS**

Northwest corner of Polk and western Marshall Counties:

**Wayne Bergstrom – 701-520-9771**

Pennington and eastern Marshall Counties:

**Bryan Holmes – 218-686-1413**

Red Lake and most of Polk Counties:

**George Stage – 701-306-3511**

Any time you or an electrician does wiring or other electrical work at your home or farm, Minnesota state law requires a state wiring inspector to conduct a proper inspection of the work. A rough-in inspection must be made before any wiring is covered. A final inspection is also required. Please visit [www.dli.mn.gov](http://www.dli.mn.gov) for more information. The inspectors can be reached week-day mornings between 7:00 a.m. and 8:30 a.m.

**OUR MISSION STATEMENT**

*It is the mission of Red Lake Electric Cooperative to enhance the quality of life for people of our service area by safely and consistently providing quality electric service and other valued services while holding our employees, our community and our environment in high regard.*



# Manager's Comments

by Roger Johanneck



## Annual pole inspection helps keep the lights on

A friend of mine in the electrical business circles occasionally likes to part company after a discussion on a multitude of issues by telling me: “don’t forget the main thing is to keep the main thing, the main thing.” In other words, even though we might think we have a number of different fires to put out in our Cooperative line of duty, what’s really important to the members is to keep the lights on – the “juice” flowing. So true. It’s a good bit of wisdom to keep in mind as we often get mired in this business doing tasks required by agencies that sometimes leave me thinking if this is really going to make a difference for our members.

One task we do that without a doubt is beneficial to our members and is important to keeping the lights on and the juice flowing is our annual pole maintenance program. Inspection of the Cooperative’s 45,000 poles is completed on a 10- to 12-year cycle; some years more poles are done than others. But based on our history of data or pole failure rate, this amount of time to complete an inspection cycle fits (5320001.12 Tyler Holen) for our Cooperative and satisfies the Rural Utilities Service (RUS) recommendation. This year fewer poles were tested than average; just under 2,500 poles.

Red Lake Electric hired the services of a company to test a portion of the 45,000 poles that hold up our 2,324 miles of overhead power line connecting our service area. RAM Utilities of Moorhead, Minn., was contracted to inspect and treat as necessary poles serving out of the Hazel substation. This area included members served in Rocksbury, Smiley, Kratka, River Falls, Mayfield and Wyandotte townships in Pennington County; and River and Emardville townships in Red Lake County.

The Cooperative has done annual pole testing for a number of years now; it has proven to be an effective way to ex-

tend the life of the pole and improve upon the electric service you count on from Red Lake Electric. We are now on the third time around of testing and treating poles in our service area.

Work or maintenance varies between each pole based on a visual inspection. If the pole looks in tough shape, it may be rejected outright and RAM will not perform any maintenance on the pole. They instead notify Red Lake Electric Cooperative that the pole needs replacement. This is something RLEC will do with our own crews.

Poles that fall in the category between rejected or new, will be sound tested and bored to determine the quality of the pole. If some decay is noted, dirt will be removed at the ground line and an exterior treatment will be applied to the pole or a preservative will be applied in the hole that has been bored.

Over a third of our poles in service have been in place since 1950 or earlier. I think it goes without saying, but I will say it anyway: we get very good service life out of our poles. Part of the reason we get such longevity out of our poles is the product itself and some is due to the climate we live in. The northern climate, we are told, is less harsh on wooden poles than warmer climates to the south. Another factor that extends the life of the pole is the periodic maintenance.

Another service performed by the pole testing crew is to document the GPS location of each pole. This process will help identify and catalog the inventory of poles the Cooperative has in place. This isn’t only information to the pole database itself, but the equipment that is attached to the pole will be more accessible for future reference.

The ongoing maintenance to the system, like this recently completed pole inspection, has proven to be a worthwhile investment by your Cooperative. Treatment has extended the life of the poles in service and delayed by years when the

*continued on page 3*

poles need to be replaced. Another benefit of a systematic pole testing program across our service area has been service reliability. When the first systemwide pole inspection occurred, many more poles were being rejected than what we experienced from the second systemwide inspection. An example of that can be seen in the comparison of the annual pole inspection done 20 years ago; 4,250 poles were inspected and 500 poles were rejected: a failure rate of more than 10 percent. This year, 48 poles need to be replaced from the 2,500 tested; a rejection rate of less than 2 percent. And of the 48 rejects, eight of those poles were close to 70 years old. We expect that favorable or lower rejection rate trend to continue on in our third system inspection.

Replacement of rotten poles before they create (6317003.01 Shannon W. Lundeen) an interruption of service not only makes good sense from a reliability standpoint, it is a cost saving benefit to your Cooperative. It's a good way of helping us keep the main thing, the main thing.

## Board of directors to address local decision-making authority granted in Minnesota statute 216B.164

**D**uring the 2017 legislative session the Minnesota Legislature passed and the Governor signed a provision that reduces duplicative regulation on your electric cooperative. This local democracy legislation returns some balance to the regulatory process, ensuring decisions that impact member-owners of cooperatives are made locally by your elected board of directors. While electric cooperatives are already locally regulated in most areas, this legislation made an important clarification, one that will allow (7006003.02 John Schindler) for innovation in response to members' needs and wants for years to come.

The legislation impacts the distributed generation section of statute and brings it in line with the rest of Minnesota Statute as it applies to rates, fees and charges of electric cooperatives. Electric cooperatives still must follow the law as laid out by the legislature in this section. The provision that the legislature recently passed and the Governor signed allows for cooperatives to adopt the authority implementing this section of statute (MN 216B.164). To do so a cooperative has to pass a resolution adopting this authority and adopt rules

## Patty Mickelson completes two terms as Trust Board director

At the Red Lake Electric Trust board meeting held in March, Patty Mickelson of Oklee finished the second of two three-year terms as director of the Red Lake Electric Trust board; most recently serving as its secretary-treasurer. Because the Trust bylaws limit director terms to two consecutive three-year terms, Mickelson's time serving the Red Lake Electric Trust as a director is completed, and she will be replaced with a new director prior to the Trust's upcoming September meeting. It was a privilege serving with Patty, who during her tenure served for a time as president. Patty did a great job evaluating the Operation Round Up fund applications during her tenure; her fairness to all the organizations seeking grants served the Trust board and the Cooperative members who participate in Operation Round Up well. Thanks again, Patty, for accepting the invitation to serve on the Trust board. I sincerely appreciate it.

implementing this section of statute.

The municipal utilities in Minnesota have had similar authority in Minnesota for more than 30 years. With the passage of the provision, the legislature affirmed the value of local decision making for rural electric cooperatives across Minnesota. As your locally-owned cooperative, we know that local decision making can result in rates and services that reflect our communities' needs while assisting in keeping administrative costs down.

At the next meeting of your electric cooperative board of directors (Sept. 27), the adoption of this authority will be addressed. Directors and staff have reviewed the applicable law (MN 216B.164) and discussed a resolution and rules implementing the section of statute. The purpose of this change is to secure local decision making, not to substantively change the way your cooperative interacts with distributed generation. If you wish to comment regarding this change, please send your comments to [redlake@minnkota.com](mailto:redlake@minnkota.com), call 218-253-2168 or mail to P.O. Box 430, Red Lake Falls, MN 56750-0430.

## Recipe Corner



Submit your recipes to be published in *Volts & Jolts*. Email to [redlake@minnkota.com](mailto:redlake@minnkota.com) or mail to: Red Lake Electric Cooperative, PO Box 430, Red Lake Falls, MN 56750.

### Chicken Pot Pie Casserole

1 lb. chicken breast  
12 oz. frozen peas and carrots, thawed  
2 cups frozen diced potatoes, thawed  
(like hash browns or potatoes O'Brien)  
1 onion, diced  
2 cans cream of chicken condensed soup  
1 cup water  
2 cans refrigerated crescent rolls  
½ tsp. poultry seasoning  
Salt and pepper to taste

Grill chicken breasts until cooked through. Allow to cool. Grill diced onions until transparent. Set aside. Dice chicken into ½-inch cubes.

Preheat oven to 350. Grease an 11×13 baking dish.

Unroll one can of crescent rolls and pinch perforations to seal into a sheet. Press into bottom and up sides of prepared dish. Don't worry if sides do not go all the way up. Bake for 20 minutes or until crust is light brown. Allow to cool.

In a large skillet, combine chicken cubes, diced onion, water, potatoes and peas and carrots.


Stir and cook over medium heat until ingredients are warm (5-10 minutes).

Add soup and poultry seasoning and continue heating for another 5 minutes. If sauce looks too thick, slowly add a little more water until desired consistency is reached.

Pour chicken mixture over baked crust and spread evenly.

Unroll other can of crescent rolls and pinch perforations to seal into a sheet. Place over top of chicken mixture and press into sides of dish.

Bake for 25 minutes or until top is golden brown.



**Your energy.  
Your choice.**

**Infinity**  
RENEWABLE ENERGY

Through the Infinity Renewable Energy program, you can decide how much of the electricity you purchase is generated by renewable resources.

**Contact RLEC today to learn more about the program.**





# Local 4-Hers receive awards from Red Lake Electric Cooperative

Each year, Red Lake Electric Cooperative sponsors awards for 4-H exhibitors at area county fairs. Pictured are 4-Hers who received awards at the Red Lake County Fair held June 23-25, Pennington County Fair held July 12-16 and the Marshall County Fair held July 19-23.



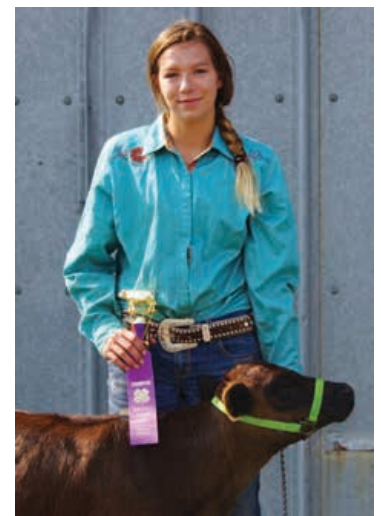
The Rate of Gain award in beef cattle, which was sponsored by Red Lake Electric, was presented to Noah Rupprecht of the Silverton 4-H Club. His steer had a rate of gain of 2.895 pounds per day. Noah was also awarded grand champion steer and the senior showmanship award at the 2017 Pennington County Fair. *Photo courtesy of Thief River Falls Times.*



Kristin Farris of the Highlandling 4-H Club won the Red Lake Electric Rate of Gain award at the 2017 Pennington County Fair with her sheep, which gained .66 pounds per day. *Photo courtesy of Thief River Falls Times.*



Teagan Domier, Independent 4-H member of Portland, N.D., was the Jr. Showmanship Champion in the Beef Division at the Marshall County Fair livestock show, which was held on July 21, 2017. Teagan is the daughter of Bryan Domier and Kelly Fulton-Domier. *Photo courtesy of Marshall County Extension Service.*



Savanna Carlson from the Riverside 4-H Club of Warren, Minn., was the Sr. Showmanship Champion in the Beef Division at the Marshall County Fair, which was held July 21, 2017. Savanna is the daughter of Sven and Venetta Carlson. *Photo courtesy of Marshall County Extension Service.*





Huot Hustlers 4-H member Akayla Rondorf received an award sponsored by Red Lake Electric Cooperative at the Red Lake County Fair for her electric project. *Photo courtesy of Oklee Herald.*



Jacob Solie of Huot Hustlers received two awards from Red Lake Electric Cooperative at the Red Lake County Fair for his horseless horse and shop project. Not pictured but also receiving awards sponsored by Red Lake Electric were Garnes Go Getters 4-H member Tanisha Srsnsky for her beef project and Huot Hustlers 4-H Club member Justin Solie for his safety project. *Photo courtesy of Oklee Herald.*



Eva Hurlburt of the Kratka 4-H Club won the Red Lake Electric dairy top production award at the 2017 Pennington County Fair. *Photo courtesy of Thief River Falls Times.*



The champion breeding ewe at the 2017 Pennington County Fair in 4-H was awarded to Kale Geiser of the Steiner 4-H Club. The trophy was sponsored by Red Lake Electric. *Photo courtesy of Thief River Falls Times.*

# Need help to pay your electric bill? Help is only a phone call away!

**R**ed Lake Electric is prepared to work with members who are in need of assistance paying their electric bills. For more information about the Cold Weather Rule, call Red Lake Electric Cooperative or see MN Statutes, Chapter 216B, which governs disconnection policies of residential heating sources from Oct. 15 through April 15. Here are some common questions:

## Can my heat be shut off in the winter?

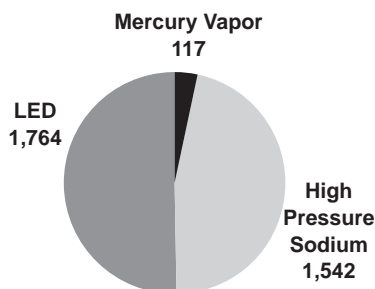
**YES**, unless you take steps under the Cold Weather Rule (CWR) to protect yourself. You must contact Red Lake Electric Cooperative to apply for protection from having your heat shut off. This is true for all residential customers, including senior citizens and families with young children.

## QUICK TAKES

### A look at some statistics from your Red Lake Electric Cooperative

Red Lake Electric Cooperative has outdoor security lighting available for just pennies a night. The monthly \$8 charge includes all costs to operate and maintain the light. If you want to add lighting to your yard or work area or if you are interested in adding a manual on/off control switch feature to your security light, give RLEC a call today. 1-800-245-6068 or 218-253-2168.

### Red Lake Electric's Security Lights



## NOTICE OF NAMES

Hidden within the text of the articles of this issue of the *Volts & Jolts* are the names and account numbers of some Red Lake Electric Cooperative members. They will appear within the articles in parentheses as such (9999999.99 Willie Ray Member). If you find your name and account number, clip it out and send it with your next payment. You will be credited with \$5 on your electric bill.

## Will you disconnect me without my knowledge?

**No.** RLEC will give you a "Final Disconnection Notice" on your electric bill. This will state the amount you need to pay, as well as the date you must contact RLEC to avoid disconnection. If you do not contact us by the disconnect date, we will make an attempt to collect your bill at which time we will leave you a door hanger with a packet of information on how to avoid being disconnected.

## How can I keep my heat on or get reconnected if I am already shut off?

You must make and keep a payment plan with Red Lake Electric Cooperative. The payments don't have to be the same amount each month. RLEC will work with you to make suitable arrangements to help you keep your (4403028.01 Harlan Halvorson) electricity. Once arrangements are made, you must contact Red Lake Electric Cooperative if you are unable to make a payment or your service may be shut off.

## When I contact RLEC to apply for the CWR what happens?

- You will make a CWR payment plan, which you must keep to be protected.
- If you and the utility cannot agree on a payment plan, you have 10 days to appeal to the Public Utilities Commission.
- The Commission will help you set up a payment plan.
- Your service will stay on during the appeal process.

## What happens if I can't make my payments as planned?

If you can't make your payments, call

RLEC **immediately** to make a new CWR payment plan. If you do not make your payments, your service may be shut off.

## What if I need help reading or understanding notices from my utility?

- The CWR has a "Third Party Notice" option.
- If you would like help applying for the CWR, you may arrange for another person to get a copy of any disconnection notices or other important information, at the same time you receive it. This may be a friend, family member or anyone who is willing to help you understand the notices or set up a CWR payment plan. This person is not responsible for paying your bill. They are only agreeing to help you understand notices from Red Lake Electric Cooperative.

## How do I sign up for Third Party Notices?

Call Red Lake Electric for a sign-up form. The form must be filled out and signed by both you and the person you want to be notified and mailed back to the utility.

## Are military personnel subject to shut off?

Minnesota law protects a residential customer if a member of the household has been issued orders into active duty, for deployment or a change in duty station if they are unable to pay their electric bill. You must call Red Lake Electric to set up a payment plan. For more information see MN Statutes, Chapter 325E.028 Utility Payment Arrangements for Military Personnel.

## FEDERAL/STATE ENERGY ASSISTANCE

If you need help paying your electric utility bill, you may qualify for state or federal fuel assistance. For complete, qualification and application information, contact your local county welfare or community/citizen's action council listed below. These organizations may also provide budget counseling.

### Inter-County Community Council

Oklee, MN  
Serves East Polk, Pennington  
and Red Lake Counties  
218-796-5144  
Toll-free: 1-888-778-4008  
Fax: 218-796-5175

### Northwest Community Action

Badger, MN  
Serves East Marshall County  
218-528-3258  
Toll-free: 1-800-568-5329  
Fax: 218-528-3259

### Tri-Valley Opportunity Council

Crookston, MN  
Serves West Polk,  
West Marshall County  
218-281-9080  
Toll-free: 1-866-264-3729  
Fax: 218-281-0705

### Red Lake Community Action Agency

Red Lake, MN  
Serves Beltrami County  
218-679-1880





## Cards of Thanks

Thank you so very much for sponsoring the poultry herdsman's award for this year. It is greatly appreciated. Thanks for supporting Pennington County 4-Hers.

*Sanders 4-H Club*

Thank you so much for the scholarship award. It will be very helpful as I advance my academic career at the University of North Dakota this fall.

*Kennedy Cwikla, Crookston*

Thank you for sponsoring the 4-H beef herdsman's award at the 2017 Pennington County Fair. Our club worked hard at keeping our stalls nice and clean. We appreciated your support!

*Noah & Alanis Rupprecht  
Silverton 4-H Club*

Thank you for sponsoring the trophy and cash prize for top dairy production. My dairy goat, Meggie, won it. She gave almost 2,000 pounds last year.

*Eva Hurlburt, Kratka 4-H Club*

Thank you for the herdsman's award.

*Eva Hurlburt, Zayna and Svea Wolff*

Thank you so much for the Pennington County Fair herdsman's award.

*Hailey Liedberg, Nolan Liedberg, Kayla  
Nelson and Lydia Nelson*

Thank you so very much for sponsoring the rabbit herdsman's medallion award. It was my pleasure to accept it and my perfect score helped my 4-H Club win overall herdsman'ship.

*Wyatt Halvorson, president  
Kratka 4-H Club*

Thank you for sponsoring the beef rate-of-gain award at the 2017 Pennington County Fair 4-H show. I won it with my Hereford steer named Erskine. I will be taking him down to the State Fair. Thanks for your support.

*Noah Rupprecht, Silverton 4-H Club*

Thank you so much for the generous scholarship you gave me. I appreciate it so much! I will be attending MSCTC in Fergus Falls and playing volleyball this fall. I will be working toward the dental hygiene program in Moorhead.

*Ashley Henrickson, Goodridge*

Thank you for sponsoring the champion breeding ewe trophy. It is very much appreciated.

*Kale Geiser, Steiner 4-H Club*

Thank you so much for your contribution to our scholarship fund. Because of your generosity and support, our students continue to be successful in the next chapter of their lives. Your thoughtfulness is truly appreciated.

*Becky Carlson, Goodridge K-12 Principal*

Thank you for sponsoring the sheep herdsman'ship and sheep rate-of-gain awards at the Pennington County Fair. Your constant support of Pennington County 4-H is greatly appreciated.

*Kristin Farris, Highland 4-H Club*

Thank you for supporting 4-H. It's great to see people supporting 4-Her projects.

*Ruby Geiser, Steiner 4-H Club*

Thank you so much for sponsoring 4-H dairy herdsman'ship. You guys sponsor stuff every year.

*Kale Geiser, Steiner 4-H Club*

Thank you for the award for my horseless horse project and for my shop project. I had a great time at the (3719003.01 Duane V. Vatsas) County Fair and I am looking forward to going to State. I am so appreciative of the award money and your support of my projects.

*Jacob Solie, Crookston*

Thank you for supporting 4-H. I received an award for my electric project. I made a portable cooling fan using a computer fan and a storage container. It has an area for ice packs and runs on 9-volt batteries.

*Akayla Rondorf, Red Lake Falls*

Thank you for the scholarship. It will help me with my education expenses. I will use it while attending Northland College in the fall.

*Jeremy Wiskow, Goodridge*

Thank you for donating to the Goodridge School post prom party. It was greatly appreciated.

I just want to thank all of your crew members who helped get power back to us here in Clearwater County. Your men worked so efficiently and tirelessly. I really appreciate it!

*Kathy Steinmetz, Bagley  
Clearwater-Polk Electric Cooperative member*

Thank you for helping make the Relay For Life event a success. Together, we honored all cancer survivors and remembered loved ones lost. Because of your support, we're able to take action against this terrible disease.

*American Cancer Society, North Ridge*

## CLASSIFIEDS

**Members are invited to use this FREE WANT AD service.**

If you have anything to trade or sell, just drop a card to Red Lake Electric Cooperative, Red Lake Falls, MN 56750.

### For Sale

5-drawer dresser, Neiko ¾ h.p. 8" bench grinder, 4-drawer dresser, Texsport propane heater. 218-681-5653.

2510 John Deere tractor with loader, needs transmission repair, located near TRF. Call 218-689-7797.

## Energy Efficiency Tip of the Month



**Fall/winter energy tip:** When you are asleep or out of the house, turn your thermostat back 10 to 15 degrees for eight hours and save around 10 percent a year on your heating and cooling bills. A programmable thermostat can make it easy to set back your temperature – set it and forget it!

*Source: U.S. Dept. of Energy*



## Controlled burns can be costly

If you plan a controlled burn of ditches or other areas, please check for utility poles in the area. Controlled burns can easily burn out of control and could result in damage to our electric poles.

Poles that burn through, as shown in the photo, need to be replaced. Even poles that are blackened may need to be replaced. During the intense heat of a grass fire, the preservatives in the pole may boil or seep out. This may cause the pole to be brittle and more prone to wind or ice damage that would lead to an eventual outage.

If a pole is damaged to the point of replacement, the member would be charged the cost of the equipment plus labor. Please exercise caution when doing a controlled burn in the vicinity of utility poles.

## Add comfort and energy efficiency to your home with help from Red Lake Electric Cooperative and PowerSavers



### Heating and cooling system rebate checklist

*Must be on off-peak.*

*Combined heating and cooling rebate maximum of \$600.*

#### ☐ Electric plenum heaters

Easily converts your existing fossil fuel furnace into a dual-fuel heating system. You are able to use the most efficient, cost-effective heating source – fossil fuel or electricity – at any time.

**Electric Heat rebate:** \$20 per kilowatt (kW), maximum of \$600

**PowerSavers rebate:** \$500 if installed with ENERGY STAR®-rated air-source heat pump. Must modulate to allow ASHP to operate down to 5 degrees F., and be on off-peak.

#### ☐ Electric thermal storage heaters

Draws electricity during off-peak hours when it is cheaper. Heat is stored in specially designed bricks to provide comfort 24 hours a day.

**Electric Heat rebate:** \$20 per kW, maximum of \$600

**PowerSavers rebate:** \$500 if installed with ENERGY STAR®-rated air-source heat pump. Must modulate to allow ASHP to operate down to 5 degrees F., and be on off-peak.

#### ☐ Air-source heat pumps (including mini-split ductless option)

Works just like a central air conditioner in the summer. In the fall and winter, they provide super-efficient supplemental heat.

**Electric Heat rebate:** \$100 per ton, maximum of \$600

**PowerSavers rebate:** \$400-500 depending on efficiency ratings

#### ☐ Geothermal heat pumps

Provides the highest efficiency for space heating and cooling available today. The system transfers heat to and from the earth using only small amounts of electricity.

**Electric Heat rebate:** \$200 per ton, maximum of \$600

**PowerSavers rebate:** Open loop, \$200 per ton, maximum of \$2,500. Closed loop, \$400 per ton, maximum of \$5,000. Must meet program efficiency requirements.

#### ☐ Underfloor electric heating

A popular off-peak option because the system transfers consistently across the floor to reach people and objects, providing both comfort and efficiency. Applications include electric boiler with hydronic tubing or electric cables or mats.

**Electric Heat rebate:** \$20 per kW, maximum of \$600

#### ☐ Other electric heating systems

Options include electric baseboard, cove heaters and more.

**Electric Heat rebate:** \$20 per kW, maximum of \$600

### Electric water heater rebate checklist

*Must be on off-peak*

#### ☐ 100 gallon or greater

**Water heater rebate:** \$200

**PowerSavers rebate:** \$150

#### ☐ 56-99 gallon

**Water heater rebate:** \$150

**PowerSavers rebate:** \$150

#### ☐ 55 gallon or less

**Water heater rebate:** \$100

#### ☐ Bonus rebates:

Add \$250 if converting from natural gas or propane.

Add \$100 for new building construction.

### Appliance rebate checklist

*Must be ENERGY STAR®-approved*

#### ☐ Clothes washer

**PowerSavers rebate:** \$50

#### ☐ Clothes dryer

**PowerSavers rebate:** \$50

#### ☐ Refrigerator or freezer

**PowerSavers rebate:** \$25

**Additional rebate** for recycling old unit: \$25

### CFL and LED light bulb rebate checklist

*ENERGY STAR®-recommended. Rebate up to dollar amount listed per bulb or 75% of the purchase price.*

#### ☐ Replace incandescent bulb with screw-in CFL

**PowerSavers rebate:** \$2 per bulb

#### ☐ Replace incandescent bulb with screw-in LEDs

**PowerSavers rebate:** \$4 per bulb (40-60 watts)

**PowerSavers rebate:** \$8 per bulb (65 watts or greater)

**PowerSavers rebate:** \$8 per install of fixture/replacement kit

#### ☐ Install LED outdoor fixtures (dusk-to-dawn operation required)

**PowerSavers rebate:** \$20 per fixture (40 watts and under)

**PowerSavers rebate:** \$40 per fixture (greater than 40 watts)

### Other ways to save on heating and cooling:

- Seal air leaks. **PowerSavers rebate:** 30% of sealing cost, maximum incentive \$300 (Preblower and postblower tests required)
- Insulate and air seal your attic. **PowerSavers rebate:** 30% of sealing cost, max. \$500. (Must include air sealing. Improved from R-30 or less to R-50. Attic knee walls insulated to a minimum of R-25 up to R-30.)
- Add wall insulation. **PowerSavers rebate:** 30% of insulation cost, max. \$500. (Wall insulation improved from R-5 or less to R-11 or higher. Attic knee walls excluded.)
- Install a furnace air handler with ECM blower. **PowerSavers rebate:** \$100 per unit