



OCTOBER 2017

Volts & Jolts

Published monthly for the members of Red Lake Electric Cooperative, Inc.

One of the Minnkota Power Systems

SERVING THE FOUR-COUNTY AREA OF MARSHALL, PENNINGTON, RED LAKE AND POLK
and a portion of the lands of the Red Lake Band of Chippewa

Red Lake Electric observes National Cooperative Month in October

Red Lake Electric Cooperative is joining 30,000 cooperatives nationwide in October to celebrate National Co-op Month, which recognizes the many ways cooperatives are committed to strengthening the local communities they serve. "Co-ops Commit" is the theme for this year's celebration, spotlighting the countless ways cooperatives meet the needs of their members and communities.

"Our cooperative delivers electricity to 4,374 member-owners in our four-county service area," says Roger Johanneck, general manager. "Delivering safe, reliable, affordable power is our top priority, but we are also invested in

our communities because we are locally owned and operated.

Rural America is served by a network of about 1,000 electric cooperatives, most of which were formed in the 1930s and 40s to bring electricity to farms and rural communities that large, investor-owned power companies had no interest in serving because of the higher costs involved in serving low-population and low-density areas.

To celebrate National Co-op Month, Red Lake Electric will host an open house the week of Oct. 23-31. Stop in to see us and enjoy some refreshments and goodies.



Kruse retires – Lead lineman Steven Kruse's career came to a close Sept. 30. Kruse joined Red Lake Electric in 1983 as a part-time employee in the appliance department, and later moved to the line department. Kruse was hired as a full-time employee on July 1, 1997, as a lineman. General Manager Roger Johanneck presented Kruse with a plaque for his dedicated years of service as an employee of Red Lake Electric Cooperative. We wish you well during your retirement, Steve!

CO-OPS COMMIT

To Community

In observation of Co-op Month

**Red Lake
Electric Cooperative**
is hosting an

OPEN HOUSE

Oct. 23-31

*Stop by and enjoy coffee,
cider and goodies.*

DAYLIGHT SAVING TIME

Don't forget to fall back
on November 5!

Set your clocks back
by one hour.



Published 10 times a year, January through May, July and September through December, by the Red Lake Electric Cooperative, Inc., in the interest of its members and others. Periodical postage paid at the U.S. Post Office in Red Lake Falls, Minnesota 56750. POSTMASTER, SEND ADDRESS CHANGES to Volts & Jolts, c/o Red Lake Electric Cooperative, Inc., P.O. Box 430, Red Lake Falls, Minnesota 56750-0430. Email: redlake@minnkota.com.

OFFICERS AND DIRECTORS

President Randy Versdahl
Vice President Stacy Blawat
Secretary-Treasurer Mark Hanson
Directors Aaron Chervestad,
Bonnie Christians, Robert Finstad,
Colette Kujava, Steve Linder, Peter Mosbeck

Roger Johanneck General Manager
Shirley Bregier Manager of Finance
& Administration
Steve Conely Manager of Electric
System Operations
Kelli Brateng Manager of Member Services

OFFICE HOURS

Monday-Friday
8 a.m. – 4:30 p.m.

Phone: (218) 253-2168
Toll-Free: 1-800-245-6068
Fax: (218) 253-2630

**AFTER HOURS/OUTAGE CALLS
218-253-2200**

Website: www.redlakeelectric.com
Email: redlake@minnkota.com

**CALL BEFORE YOU DIG
1-800-252-1166 or 811****MINNESOTA STATE
ELECTRICAL INSPECTORS**

Northwest corner of Polk and western Marshall Counties:

Wayne Bergstrom – 701-520-9771

Pennington and eastern Marshall Counties:

Bryan Holmes – 218-686-1413

Red Lake and most of Polk Counties:

George Stage – 701-306-3511

Any time you or an electrician does wiring or other electrical work at your home or farm, Minnesota state law requires a state wiring inspector to conduct a proper inspection of the work. A rough-in inspection must be made before any wiring is covered. A final inspection is also required. Please visit www.dli.mn.gov for more information. The inspectors can be reached week-day mornings between 7:00 a.m. and 8:30 a.m.

OUR MISSION STATEMENT

It is the mission of Red Lake Electric Cooperative to enhance the quality of life for people of our service area by safely and consistently providing quality electric service and other valued services while holding our employees, our community and our environment in high regard.



Manager's Comments

by Roger Johanneck

**Conservation Improvement
Program (CIP) changes**

Annually about this time of year, Conservation Improvement Program incentives offered by Red Lake Electric are evaluated. Consideration is given as to whether rebates for heating, cooling, lighting and other electric appliances are continued, changed, added or deleted for the coming year's CIP. One significant change this year to your Red Lake Electric Cooperative and other Minnesota rural electric cooperatives that serve fewer than 5,000 members, along with municipal utilities that serve fewer than 1,000 residents, we are exempt from complying with a state-mandated Conservation Improvement Program that governed all of the state's electric utilities, regardless of size, since 1992. That exemption was born out of legislation passed during the 2017 legislative session that ended earlier this year.

How the exemption for smaller rural electric cooperatives and small municipal electric utilities came to pass was, according to all accounts, a bit of a quirk in the legislative process. Quirk or not; we'll take the exemption and not miss the documentation, oversight and reporting requirements mandated by our state.

Since the early days of your Red Lake Electric Cooperative, we have advocated some form of marketing plan to encourage energy efficiency and the wise use of our service, or shape the usage pattern of our members for the benefit of all of us. Off-peak heating and water heating programs are perfect examples of shaping member use that have saved our rate-payers immensely over the years. Delaying or eliminating the construction of new baseload generation can, in large part, be traced to the load-shaving ability of Red Lake Electric's (5501002.16 Shawn P. Orre) load control program offered in conjunction with our wholesale power provider, Minnkota Power – all created without the influence of any state mandate.

Beginning in 1992, the Minnesota Conservation Improvement Program (CIP) required that all Minnesota electric utilities spend 1.5 percent of their annual revenue on energy-savings programs. In

2007, the Minnesota legislature passed the "Next Generation Energy Act," which made a number of changes to the CIP requirements. What it meant to your cooperative is that we have spent three to four times more annually on funding energy efficiency programs offered to our membership. These program incentives are funded by all members through the energy rates members are billed through their monthly energy use. The other shift in the program in 2007 was that it moved away from a spending goal to a kilowatt-hour (kWh) or energy-savings goal. The goal was set to reduce our members' annual kWh use by 1.5 percent per year. It is not sustainable for an electric utility to reduce its energy sales by 1.5 percent per year. If you consider one's own home where you have installed new windows, added insulation where you could, changed out your HVAC system, updated your lighting and appliances, at some point you run out of meaningful efficiency upgrade options.

Even though Red Lake Electric will not be mandated to participate in a statewide-sponsored CIP, we plan to offer an array of rebates that will help members upgrade to more efficient products. At this point, we plan to continue with the heating and cooling rebates currently in place, but eliminate the lighting incentives. The lighting incentives will be in place through the end of the year, so I encourage you if you want to make any lighting upgrades that currently qualify for an incentive, do so before the end of the year because these incentives will be discontinued for 2018.

In addition to the rebate information you will find on page 8, our website at www.redlakeelectric.com also contains information on available rebates, rebate forms and other helpful tips in your evaluation of energy efficiency upgrades.

I encourage you to take advantage of these incentives if your heating, cooling or lighting systems are in need of replacement or are just not up to today's efficiency standards. There is a lengthy list of rebates and incentives for both our commercial and residential customers to consider. Call us if we can help in any way with your evaluation.

continued on page 3



Line Service Department

by Steve Conely

My, how time flies by. Summer is done and fall is here. That being said, if you are planning a new building site or would like to have an overhead power line converted to an underground power line, there is a limited time to complete those projects yet this year. Red Lake Electric Co-op does not like to plan any underground line projects later than the first week of November due to the possibility of frozen ground. If you have something in the works and would like it completed this year, please contact us.

With harvest started and field work beginning again, please be careful around electrical equipment and overhead power lines. Pay special attention to power lines when unfolding equipment, moving augers, loading/unloading combines, grain

carts and trucks. When doing tillage don't always count on your auto steer. There have been several occasions where the auto steer's path for a tractor caused it to drive over power line poles placed across a field. If you come across low wires, missing guy wire markers, or something on RLEC electrical system we should be aware of, please let us know about it.

In closing, I always like to show my appreciation to the landowners who allow us access to their land for another's benefit. Thank you! Also if you have added or plan to add bin fans, grain dryers, electric heat, or any other larger electric load, please contact us to avoid overloading your electric service and damaging RLEC's equipment. Stay safe and if you have any questions or concerns, please contact us.

Recipe Corner



Submit your recipes to be published in *Volts & Jolts*. Email to redlake@minnkota.com or mail to: Red Lake Electric Cooperative, PO Box 430, Red Lake Falls, MN 56750.

Cream Cheese Apple Coffee Cake

½ cup (1 stick) butter, softened
½ cup brown sugar
¼ cup white sugar
1 egg
¼ cup vegetable oil
½ tablespoon vanilla
1½ cups all-purpose flour
½ teaspoon baking soda
½ teaspoon baking powder
¼ teaspoon salt
1 teaspoon cinnamon
1½ cups chopped apples (chopped small)

Cream Cheese Layer Ingredients:

8 oz. softened cream cheese
1 teaspoon vanilla
3 tablespoons white sugar

Streusel Ingredients:

¾ cup white sugar
¼ cup brown sugar
½ cup flour
1 teaspoon cinnamon
½ teaspoon baking powder
⅛ teaspoon salt
6 tablespoons cold butter

Preheat oven to 350°F and grease an 8x8 inch square pan.

Combine the butter and sugars for the cake and mix until fluffy. Add the egg, oil and vanilla and mix until combined.

Stir together the flour, baking soda, baking powder, salt and cinnamon. Stir into the butter mixture, mixing just until combined. Stir in the chopped apples. Spread into the prepared pan.

Mix together the cream cheese, sugar and vanilla for the cream cheese layer and spread over the cake batter in the pan.

Combine all the streusel ingredients using your hands or a pastry blender until well combined. Sprinkle over the cream cheese mixture.

Bake for about 45 minutes or until the topping is browned.



Kolstoe to serve as Trust Board director

Diane Kolstoe of Oklee has been selected to serve as a Red Lake Electric Cooperative Trust Board director. The Trust Board determines grants for Red Lake Electric's Operation Round Up®.

Diane and her husband, Tom, have been members of Red Lake Electric Cooperative since 1973. They have three children: Michael (Nicole), Christopher (Nancy) and Pamela (Jared) Vettleson. The Kolstoos have seven grandchildren: Brandon, Sarah, Elijah, Laruel, Lexy and Lucas Kolstoe and Micah Vettleson.

The Kolstoos raise wheat, soybeans and corn. Up until 2008, they had a dairy operation. Diane is the Garnes Township

clerk and also serves on the Red Lake County FSA County Committee.

"I look forward to serving on the Red Lake Electric Cooperative Trust Board as a director."

Kolstoe will serve with other Trust Board directors: Tishara Melcher of Middle River, Julie Stennes of Thief River Falls, Bonnie Christians of Crookston and Roger Johannek of Red Lake Falls.

Since the inception of Operation Round Up in 1993, \$512,000 has been granted to community organizations and charities.



Diane Kolstoe
Trust Board Director

Manager's Comments *continued from page 2*

Goodbye Steven Kruse

I want to add my farewell and best wishes to Steven Kruse whose career here at Red Lake Electric has come to an end. Steven, who has been with the cooperative for more than 20 years, retired the end of September after serving most recently as a lead lineman, a leadership position he held since March 1, 2012. Steven was not only a competent and valued employee of the cooperative, he was respected and well-liked

by his fellow employees. We are all grateful not only for Steven's good work here but for his decency and the manner he went about his work. Steven is a class act and represented (2131003.04 Brandon S. Mols-tad) the cooperative and himself well.

Congratulations, Steven. Many thanks for a job well done, your sincere friendship and your fine example. May your retirement years be happy, healthy and many.



**In observation of Veterans Day,
Red Lake Electric Cooperative's
headquarters will be closed Friday, Nov. 10**



In case of an electrical outage or emergency, call the after-hour phone number at 218-253-2200.

*Thank you to all military personnel,
past and present, who have served
and are serving this great nation,
the United States of America.*

Live wire



Minnkota line worker Jordan Klein works to remove an old hanging lightning arrester on an energized 69-kilovolt (kV) line.

Minnkota crews making progress on blink outage projects

Looking up, the two line workers see wires carrying thousands of volts of electricity. Looking down, they see 45 feet between their boots and the grass.

This is not a job for the faint of heart, but for Minnkota Power Cooperative line workers, it has been a routine part of the summer construction season.

Crews have been working safely and efficiently as they move from pole to pole along the cooperative's power delivery system installing equipment to reduce the impact of blink outages – those 1-3 second losses of power caused by a lightning strike or other power line contact. Stretching from central North Dakota to northern Minnesota, this 2,100-mile network of 69-kilovolt (kV)

lines is the focus of an effort to improve system reliability to cooperatives, including Red Lake Electric. From 2015 to 2018, blink

outage mitigation equipment will be installed on about 770 miles of this system, specifically focused on the most vulnerable sections as identified by a comprehensive 2015 study.

"It's not that the frequency of blink outages has necessarily been increasing in recent years, but rather that member standards for reliability continue to rise," said Skylar Ertman, civil engineer on the project.

Ertman said studies are under way on some of the completed line sections to determine the effectiveness of the installed equipment.

On the job

While it is possible to de-energize a line to complete the work, there are instances when taking that line out of service would cause a widespread power outage. The alternative? Leave those transmission lines active while the necessary work is performed.

Some call it live-line maintenance. Others refer to it as hot-sticking or barehanding. No matter the name, it's challenging work that requires specialized training and equipment.



An insulated fiberglass hot stick is used to safely install blink outage mitigation equipment on energized lines.

“Working the wires live is kind of a fun, interesting job,” said Kelly Hebl, heavy crew foreman on one of the live-line crews. “That way we don’t disrupt service to the co-ops.”

On a typical job, one line worker will ride up in a bucket truck with the necessary tools and equipment, while another line worker will climb the wooden pole. Other crew members stay at ground level to serve as spotters, operating equipment and ensuring the work is being done safely.

“We have guys on the ground making sure everyone is keeping their required clearances from the energized line,” Hebl said.

The line work is completed with insulated fiberglass “hot sticks” with various attachments, including wrenches, clamps and ratchets. To create enough space to safely work on the energized line, line workers use their hot sticks (7029003.01 George D. Proulx) to detach the line from the structure. A bucket truck with an insulated attachment atop the boom lifts the wires above the structure.

Communication is constant on-site. As equipment is removed and lowered to the ground, the line worker on top of the structure yells, “Headache,” to gain the attention of the crew members at ground level. They repeat the call to ensure everyone heard it.

The crew can complete about one pole per hour when the line is live, compared to about 30 minutes when it is taken out of service. Still, the extra time is worth it when de-energizing the line would impact a large number of homes, farms, schools and businesses.

“We always want to keep the substation going and the power on,” Hebl said. “When we’re hot-sticking, we’re able to do that.”



A poletop helmet is installed on top of the structure to prevent birds from nesting and perching on the structure.



Kelly Hebl, Minnkota heavy crew foreman, cleans the insulated jib that raises the energized wires overhead so work can be completed safely.

The basics of blink outage mitigation

To help reduce the frequency of blink outages, crews are installing four pieces of equipment:

A. New post-top insulators

Polymer post-top insulators are installed to replace the aging porcelain insulators. The post-top insulator is attached to the top phase wire at each structure, helping prevent the undesired flow of electricity to the ground.

B. Hanging lightning arresters

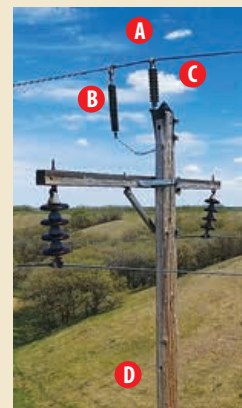
Hanging lightning arresters attach to the top phase wire and connect to the structure ground. This device routes a lightning strike around the electrical system and safely sends the current to ground.

C. Poletop helmet

A poletop helmet is a plastic cone-shaped device that deters birds and other animals from sitting on the structure, protecting them from the energized line.

D. Pole wrap

A pole wrap is a sheet of plastic that attaches around the base of the pole creating a slippery surface that deters wildlife from attempting to climb the pole.

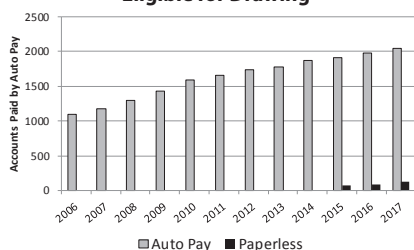


QUICK TAKES

A look at some statistics from your Red Lake Electric Cooperative

As the chart below shows, more and more Red Lake Electric Cooperative members enjoy the convenience of Auto Pay. Another convenient and mobile way to pay your bill is through Bill4U. To show our appreciation, members who use Auto Pay or are paperless for their monthly bill will automatically be entered into a drawing for a \$100 energy credit or a Kindle Fire. The drawing will be on Oct. 31. For your convenience, (6330003.02 Terence & Sarah Wahlen) an Auto Pay sign-up sheet is included your latest bill and in this issue of the *Volts & Jolts*. There are also instructions to sign up for paperless billing. Have a question about Auto-pay or going paperless? Give us a call at Red Lake Electric Cooperative today. 1-800-245-6068 or 218-253-2168.

Auto Pay and Paperless Members Eligible for Drawing



NOTICE OF NAMES

Hidden within the text of the articles of this issue of the *Volts & Jolts* are the names and account numbers of some Red Lake Electric Cooperative members. They will appear within the articles in parentheses as such (9999999.99 Willie Ray Member). If you find your name and account number, clip it out and send it with your next payment. You will be credited with \$5 on your electric bill.

Energy Efficiency Tip of the Month



Spending more time in the kitchen during the holiday season? Here's one way to be more energy efficient: unplug small kitchen appliances, like toaster ovens and microwaves, when not in use. You could save \$10 to \$20 per year.

Source: U.S. Dept. of Energy



Like us on Facebook at www.facebook.com/redlakeelectric

Win \$100 or a Kindle Fire

Sign up for Auto Pay & paperless billing today!

- Sign up to pay your electric bill with Auto Pay and your name will be entered into a drawing for a \$100 energy credit or a Kindle Fire tablet.
- Sign up for paperless billing and your name will be entered into a drawing for a \$100 energy credit or a Kindle Fire tablet.
- Sign up for both options and you will be entered in each drawing!
- The drawings will be held Oct. 31, 2017.



Sign up is simple. Go to www.redlakeelectric.com and click on **Bill4U**. Sign in or set up an account. You can either make a payment on the day of your choice or click on the set up automatic payments to sign up for Auto Pay (or use the form below) and/or sign up for paperless billing. Auto Pay will withdraw the amount of your electric bill on the 25th of each month. If you already are an Auto Pay customer, set up an account in Bill4U and sign up for paperless billing. You will receive an email each month when your bill is ready. You will then be able to sign in to Bill4U and see your statement. We also have a free app for your smartphone so you can access your statement wherever you are.

Any questions call 800-245-6068 or email redlake@minnkota.com.

Red Lake Electric Cooperative Auto Pay Sign-up Sheet

I authorize Red Lake Electric Cooperative (R.L.E.C.) and the bank listed below to initiate variable entries to my checking or savings account. This authorization remains in effect until I notify R.L.E.C. in writing to cancel it in such time as to allow R.L.E.C. to act on it.

Name (Print) _____ R.L.E.C. Account # _____

Bank Name _____ Checking or Savings account # _____

Sign here to authorize _____

☐ Sign me up for paperless billing.

Please return this sign-up form with a blank voided check to Red Lake Electric Cooperative, Inc.



Red Lake Electric Cooperative Inc.

P.O. Box 430 • Red Lake Falls, MN 56750
Phone: 218-253-2168 • Toll Free: 800-245-6068
After hours: 218-253-2200

FEDERAL/STATE ENERGY ASSISTANCE

If you need help paying your electric utility bill, you may qualify for state or federal fuel assistance. For complete, qualification and application information, contact your local county welfare or community/citizen's action council listed below. These organizations may also provide budget counseling.

Inter-County Community Council
Oklee, MN
Serves East Polk, Pennington and Red Lake Counties
218-796-5144
Toll-free: 1-888-778-4008
Fax: 218-796-5175

Northwest Community Action
Badger, MN
Serves East Marshall County
218-528-3258
Toll-free: 1-800-568-5329
Fax: 218-528-3259

Tri-Valley Opportunity Council
Crookston, MN
Serves West Polk, West Marshall County
218-281-9080
Toll-free: 1-866-264-3729
Fax: 218-281-0705

Red Lake Community Action Agency
Red Lake, MN
Serves Beltrami County
218-679-1880

GUNS AND POWER LINES DO NOT MIX

Hunting is a Minnesota favorite, ranking right up there with the fishing opener. Before you head out to the tree stand, review these hunting safety tips:

- Treat every firearm as if it were a loaded firearm.
- Be sure of your target before you pull the trigger. When you look through the sight, look beyond your target. Make sure there isn't another hunter in your sight or a building or structure, such as an electric facility.
- Never point a firearm at anything you don't intend to shoot.
- Never shoot at electric power lines or electric facilities such as substations or transformers. Not only is it extremely dangerous, it's against the law.
- Always carry a firearm so that the muzzle is under control.
- Firearms must always be unloaded when carried into camp or not in use.
- Make sure the barrel and action are clear of obstruction.
- Unattended firearms must be unloaded.
- Never climb a fence or ditch with a firearm. Never climb into a tree stand with a loaded firearm – remove the ammunition first.
- Never shoot at flat, hard surfaces or the surface of water. The bullet can hit the surface and travel parallel to it for a long distance.
- If you see a power line on the ground, don't touch it! Touching an energized power line could kill you. Notify the local utility of a downed line as soon as possible.
- Always avoid alcohol and drugs while hunting.

Board adopts rule on local decision-making authority

During the 2017 legislative session the Minnesota Legislature passed and the Governor signed a provision that reduces duplicative regulation on your electric cooperative. This local democracy legislation returns some balance to the regulatory process, ensuring decisions that impact member-owners of cooperatives are made locally by your elected board of directors.

The legislation allows for cooperatives to adopt the authority currently held by the Minnesota Public Utilities Commission (PUC) implementing Minnesota Statute 216B.164 and resolving disputes (with the requirement for independent third party mediation). Minnesota Statute 216B.164 lays out the requirements for distributed generation and this section of statute is now in line with the rest of Minnesota Statute as it applies to regulation of member-owned cooperatives.

At the Sept. 27, 2017, meeting of your electric cooperative board of directors, the board passed a resolution adopting this authority and adopted rules implementing this section of statute. A copy of the resolution has been sent to the PUC at their request in order to provide additional notice. Members may request (6119004.03 Glen Ueland) a copy of the resolution and the rules implementing this section or find them on our website.

Local democratic member control is a cooperative principle. The adoption of this authority from the PUC reaffirms that principle.

Please visit our website www.redlakeelectric.com for more information on Red Lake Electric's co-generation process.

UNITED STATES POSTAL SERVICE® (All Periodicals Publications Except Requester Publications)

1. Publication Title: **Volts & Jolts**

2. Issue Frequency: **Ten Times Year**

3. Complete Mailing Address of Known Office of Publication (Not printer): **PO Box 430 Red Lake Falls MN 56750-0430**

4. Complete Mailing Address of Headquarters or General Business Office of Publisher (Not printer): **PO Box 430 Red Lake Falls MN 56750-0430**

5. Full Name and Complete Mailing Address of Publisher, Editor, and Managing Editor (Do not leave blank):
Red Lake Electric Cooperative Inc PO Box 430 Red Lake Falls MN 56750-0430
Roger Johannock PO Box 430 Red Lake Falls MN 56750-0430
Kelli Brateng PO Box 430 Red Lake Falls MN 56750-0430

6. Owner (Do not leave blank. If the publication is owned by a corporation, give the name and address of the corporation immediately followed by the names and addresses of all individual owners. If owned by a partnership or other unincorporated firm, give its name and address as well as those of each individual owner. If the publication is published by a nonprofit corporation, give its name and address.)
Red Lake Cooperative Inc
412 International Drive S W
Red Lake Falls MN 56750-0430

7. Known Bondholders, Mortgagees, and Other Security Holders Owning or Holding 1 Percent or More of Total Amount of Bonds, Mortgages, or Other Securities. If none, check box ☒ None.

8. Full Name: **Rural Development Utility Programs**

9. Tax Status (For completion by nonprofit organizations authorized to mail at nonprofit rates) (Check one):
☒ The purpose, function, and nonprofit status of this organization and the exempt status for federal income tax purposes:
☐ Has Not Changed During Preceding 12 Months
☐ Has Changed During Preceding 12 Months (Publisher must submit explanation of change with this statement)

10. Publication Title: **Volts & Jolts**

11. Issue Frequency: **Quarterly**

12. Complete Mailing Address of Known Office of Publication (Not printer): **PO Box 430 Red Lake Falls MN 56750-0430**

13. Complete Mailing Address of Headquarters or General Business Office of Publisher (Not printer): **PO Box 430 Red Lake Falls MN 56750-0430**

14. Full Name and Complete Mailing Address of Publisher, Editor, and Managing Editor (Do not leave blank):
Red Lake Electric Cooperative Inc PO Box 430 Red Lake Falls MN 56750-0430
Roger Johannock PO Box 430 Red Lake Falls MN 56750-0430
Kelli Brateng PO Box 430 Red Lake Falls MN 56750-0430

15. Owner (Do not leave blank. If the publication is owned by a corporation, give the name and address of the corporation immediately followed by the names and addresses of all individual owners. If owned by a partnership or other unincorporated firm, give its name and address as well as those of each individual owner. If the publication is published by a nonprofit corporation, give its name and address.)
Red Lake Cooperative Inc
412 International Drive S W
Red Lake Falls MN 56750-0430

16. Known Bondholders, Mortgagees, and Other Security Holders Owning or Holding 1 Percent or More of Total Amount of Bonds, Mortgages, or Other Securities. If none, check box ☒ None.

17. Full Name: **Rural Development Utility Programs**

18. Tax Status (For completion by nonprofit organizations authorized to mail at nonprofit rates) (Check one):
☒ The purpose, function, and nonprofit status of this organization and the exempt status for federal income tax purposes:
☐ Has Not Changed During Preceding 12 Months
☐ Has Changed During Preceding 12 Months (Publisher must submit explanation of change with this statement)

UNITED STATES POSTAL SERVICE® (All Periodicals Publications Except Requester Publications)

1. Publication Title: **Volts & Jolts**

2. Issue Frequency: **Ten Times Year**

3. Complete Mailing Address of Known Office of Publication (Not printer): **PO Box 430 Red Lake Falls MN 56750-0430**

4. Complete Mailing Address of Headquarters or General Business Office of Publisher (Not printer): **PO Box 430 Red Lake Falls MN 56750-0430**

5. Full Name and Complete Mailing Address of Publisher, Editor, and Managing Editor (Do not leave blank):
Red Lake Electric Cooperative Inc PO Box 430 Red Lake Falls MN 56750-0430
Roger Johannock PO Box 430 Red Lake Falls MN 56750-0430
Kelli Brateng PO Box 430 Red Lake Falls MN 56750-0430

6. Owner (Do not leave blank. If the publication is owned by a corporation, give the name and address of the corporation immediately followed by the names and addresses of all individual owners. If owned by a partnership or other unincorporated firm, give its name and address as well as those of each individual owner. If the publication is published by a nonprofit corporation, give its name and address.)
Red Lake Cooperative Inc
412 International Drive S W
Red Lake Falls MN 56750-0430

7. Known Bondholders, Mortgagees, and Other Security Holders Owning or Holding 1 Percent or More of Total Amount of Bonds, Mortgages, or Other Securities. If none, check box ☒ None.

8. Full Name: **Rural Development Utility Programs**

9. Tax Status (For completion by nonprofit organizations authorized to mail at nonprofit rates) (Check one):
☒ The purpose, function, and nonprofit status of this organization and the exempt status for federal income tax purposes:
☐ Has Not Changed During Preceding 12 Months
☐ Has Changed During Preceding 12 Months (Publisher must submit explanation of change with this statement)

Add comfort and energy efficiency to your home with help from Red Lake Electric Cooperative and PowerSavers



Heating and cooling system rebate checklist

Must be on off-peak.

Combined heating and cooling rebate maximum of \$600.

☐ Electric plenum heaters

Easily converts your existing fossil fuel furnace into a dual-fuel heating system. You are able to use the most efficient, cost-effective heating source – fossil fuel or electricity – at any time.

Electric Heat rebate: \$20 per kilowatt (kW), maximum of \$600

PowerSavers rebate: \$500 if installed with ENERGY STAR®-rated air-source heat pump. Must modulate to allow ASHP to operate down to 5 degrees F., and be on off-peak.

☐ Electric thermal storage heaters

Draws electricity during off-peak hours when it is cheaper. Heat is stored in specially designed bricks to provide comfort 24 hours a day.

Electric Heat rebate: \$20 per kW, maximum of \$600

PowerSavers rebate: \$500 if installed with ENERGY STAR®-rated air-source heat pump. Must modulate to allow ASHP to operate down to 5 degrees F., and be on off-peak.

☐ Air-source heat pumps (including mini-split ductless option)

Works just like a central air conditioner in the summer. In the fall and winter, they provide super-efficient supplemental heat.

Electric Heat rebate: \$100 per ton, maximum of \$600

PowerSavers rebate: \$400-500 depending on efficiency ratings

☐ Geothermal heat pumps

Provides the highest efficiency for space heating and cooling available today. The system transfers heat to and from the earth using only small amounts of electricity.

Electric Heat rebate: \$200 per ton, maximum of \$600

PowerSavers rebate: Open loop, \$200 per ton, maximum of \$2,500. Closed loop, \$400 per ton, maximum of \$5,000. Must meet program efficiency requirements.

☐ Underfloor electric heating

A popular off-peak option because the system transfers consistently across the floor to reach people and objects, providing both comfort and efficiency. Applications include electric boiler with hydronic tubing or electric cables or mats.

Electric Heat rebate: \$20 per kW, maximum of \$600

☐ Other electric heating systems

Options include electric baseboard, cove heaters and more.

Electric Heat rebate: \$20 per kW, maximum of \$600

Electric water heater rebate checklist

Must be on off-peak

☐ 100 gallon or greater

Water heater rebate: \$200

PowerSavers rebate: \$150

☐ 56-99 gallon

Water heater rebate: \$150

PowerSavers rebate: \$150

☐ 55 gallon or less

Water heater rebate: \$100

☐ Bonus rebates:

Add \$250 if converting from natural gas or propane.

Add \$100 for new building construction.

Appliance rebate checklist

Must be ENERGY STAR®-approved

☐ Clothes washer

PowerSavers rebate: \$50

☐ Clothes dryer

PowerSavers rebate: \$50

☐ Refrigerator or freezer

PowerSavers rebate: \$25

Additional rebate for recycling old unit: \$25

CFL and LED light bulb rebate checklist

ENERGY STAR®-recommended. Rebate up to dollar amount listed per bulb or 75% of the purchase price.

☐ Replace incandescent bulb with screw-in CFL

PowerSavers rebate: \$2 per bulb

☐ Replace incandescent bulb with screw-in LEDs

PowerSavers rebate: \$4 per bulb (40-60 watts)

PowerSavers rebate: \$8 per bulb (65 watts or greater)

PowerSavers rebate: \$8 per install of fixture/replacement kit

☐ Install LED outdoor fixtures (dusk-to-dawn operation required)

PowerSavers rebate: \$20 per fixture (40 watts and under)

PowerSavers rebate: \$40 per fixture (greater than 40 watts)

Other ways to save on heating and cooling:

- Seal air leaks. **PowerSavers rebate:** 30% of sealing cost, maximum incentive \$300 (Preblower and postblower tests required)
- Insulate and air seal your attic. **PowerSavers rebate:** 30% of sealing cost, max. \$500. (Must include air sealing. Improved from R-30 or less to R-50. Attic knee walls insulated to a minimum of R-25 up to R-30.)
- Add wall insulation. **PowerSavers rebate:** 30% of insulation cost, max. \$500. (Wall insulation improved from R-5 or less to R-11 or higher. Attic knee walls excluded.)
- Install a furnace air handler with ECM blower. **PowerSavers rebate:** \$100 per unit