



JULY/AUGUST 2018

Volts & Jolts

Published monthly for the members of Red Lake Electric Cooperative, Inc.
SERVING THE FOUR-COUNTY AREA OF MARSHALL, PENNINGTON, RED LAKE AND POLK
and a portion of the lands of the Red Lake Band of Chippewa

Johnson takes over at Red Lake

Former Roseau Electric employee has accounting background



One might say Stephanie Johnson had the right background. She becomes the fourth straight general manager at Red Lake Electric Cooperative who took the job after working as an office manager at a cooperative.

Johnson also had experience in helping a cooperative transition to National Information Solutions Cooperative (NISC) billing and accounting software. Johnson helped Roseau Electric Cooperative move to the system in 2012 while she was working there.

"That was a lot of work," Johnson said.

It should be easier the second time around. Johnson will get to work on another conversion to NISC software next spring when Red Lake moves to the system. Tracey Stoll, her former manager at Roseau Electric, said Johnson is coming on board at Red Lake at the right time.

"She was instrumental in our transition from home-grown software to NISC software," Stoll said. "I think that's going to be her biggest strength at Red Lake."

Knowledge of the area and the cooperative world are strengths, too.

Johnson grew up in the Gatzke-Skime area south of

Roseau, Minn., graduating from Roseau High School in 1991. She then matriculated at St. Olaf College in Northfield, initially enrolling as a music student. She changed her major to economics with an accounting emphasis, however.

That she was a music major at one time isn't a surprise. She has sung the national anthem at the annual meetings of both Roseau Electric and Minnkota. Johnson has also played the piano since childhood, sometimes providing entertainment at weddings.

She and her husband, Michael, have four daughters ranging in age from 11 to 16. Rather than pull her children out of the Roseau school and away from friends, Johnson will make the daily commute from the family's rural home south of Roseau to Red Lake Falls.

"I live on the same homestead I did when I was growing up," she said. "We moved a house on the property."

Johnson said her first few weeks at Red Lake are being spent learning and asking questions. She plans to have an open door for employees who have questions.

"Communication is huge," she said. "The board, members, employees."



Volts & Jolts

JULY/AUGUST 2018 - Vol. 53, No. 9

OFFICIAL PUBLICATION OF

Red Lake Electric Cooperative, Inc.

P.O. Box 430 • 412 International Drive S.W.

Red Lake Falls, MN 56750-0430

(USPS 663-400)

Subscription rate: \$2.50 per year

This institution is an equal opportunity provider and employer.

Published 10 times a year, January through May, July and September through December, by the Red Lake Electric Cooperative, Inc., in the interest of its members and others. Periodical postage paid at the U.S. Post Office in Red Lake Falls, Minnesota 56750. POSTMASTER, SEND ADDRESS CHANGES to Volts & Jolts, c/o Red Lake Electric Cooperative, Inc., P.O. Box 430, Red Lake Falls, Minnesota 56750-0430. Email: redlake@minnkota.com.

OFFICERS AND DIRECTORS

President Randy Versdahl
Vice President Stacy Blawat
Secretary-Treasurer Mark Hanson
Directors Cecil Anderson,
Aaron Chervestad, Bonnie Christians,
Colette Kujava, Steve Linder, Peter Mosbeck

Roger Johanneck General Manager
Shirley Bregier Manager of Finance
& Administration
Steve Conely Manager of Electric
System Operations
Kelli Brateng Manager of Member Services

OFFICE HOURS

Monday-Friday
8 a.m. - 4:30 p.m.

Phone: (218) 253-2168
Toll-Free: 1-800-245-6068
Fax: (218) 253-2630



AFTER HOURS/OUTAGE CALLS 218-253-2200

Website: www.redlakeelectric.com
Email: redlake@minnkota.com

CALL BEFORE YOU DIG 1-800-252-1166 or 811

MINNESOTA STATE ELECTRICAL INSPECTORS

Northwest corner of Polk and western Marshall Counties:
Wayne Bergstrom - 701-520-9771

Pennington and eastern Marshall Counties:
Bryan Holmes - 218-686-1413

Red Lake and most of Polk Counties:
George Stage - 701-306-3511

Any time you or an electrician does wiring or other electrical work at your home or farm, Minnesota state law requires a state wiring inspector to conduct a proper inspection of the work. A rough-in inspection must be made before any wiring is covered. A final inspection is also required. Please visit www.dli.mn.gov for more information. The inspectors can be reached week-day mornings between 7:00 a.m. and 8:30 a.m.

OUR MISSION STATEMENT

It is the mission of Red Lake Electric Cooperative to enhance the quality of life for people of our service area by safely and consistently providing quality electric service and other valued services while holding our employees, our community and our environment in high regard.



Manager's Comments

by Stephanie Johnson

Hello everyone! Let me introduce myself. My name is Stephanie Johnson. I am the new general manager for Red Lake Electric. My first official day was May 16, 2018. So, as I am writing this, I have been the general manager for a little more than one month.

I was born and raised in the rural Gatzke and Skime area. I attended Wannaska Grade School and Roseau High School. After graduation, I studied finance and economics at St. Olaf College in Northfield, Minn.

After college, I lived in Northfield, Owatonna and Brainerd, where I held positions in payroll, accounts payable, accounts receivable and inventory control. In 1999, I moved back to the area where I was an accountant for Thief River Linen.

In August 2002, I entered the cooperative world with Roseau Electric Cooperative. During my 15 years of employment, I worked primarily as the accountant and later as the Office Manager. I also assisted with GPS mapping and helped implement the

NISC billing software.

I would like to thank all the Roseau Electric staff, employees, board of directors and members. My time at Roseau Electric was a wonderful and memorable experience.

I currently reside where I grew up. My husband, Michael and I have four children: Chloe, 16; Laura, 14; Lelia, 12; and Amara, 11. As you can probably guess, we are very busy.

As I sit and study Red Lake Electric Cooperative's "archives," I am made aware that July 30, 2018, marks Red Lake Electric Cooperative's 80th birthday. It was in 1938 that Red Lake Electric Cooperative was incorporated. For a business to achieve this milestone, it is a tribute to the founders, past and present directors, employees and most of all the members to provide reliable and safe electricity.

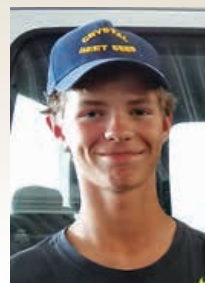
I was fortunate to have worked a few weeks with retired General Manager Roger Johanneck. His experience and knowledge will be greatly missed. All of us at Red Lake Electric wish Roger a happy retirement!

Summer help

Sam Olson, a graduate of Mahnomen High School, and Logan Klipping, Red Lake Falls, are working at Red Lake Electric Cooperative through the summer.

Olson is assisting the construction linemen crew as a groundsman and will attend lineman school at Minnesota (7128004.02 Michael A. Blow) State Community and Technical College in Baudette this fall.

Klipping is assisting with maintenance of the grounds. He will be a junior at Lafayette High School this fall.



Sam Olson



Logan Klipping

Blink outage work continues

Minnkota Power Cooperative, Red Lake Electric's wholesale power provider, is continuing to pursue project work in 2018 to address blink outage issues on its 69-kilovolt power delivery system. Later this summer, Minnkota crews plan to work on 7 miles of transmission line between the Goodridge switch and the Highland substation, feeding the Highland substation. While it is not practical or cost effective to reconstruct all of these lines in the near term, modifications can be made to help limit their exposure to blinks caused by lightning strikes or other line contacts.

More than 565 miles of line have been treated since the start of the project in 2015. About 250 miles are planned for 2018. Minnkota has begun (3702001.02 Arnold Boman) monitoring these stretches of line and reviewing the effectiveness of the blink mitigation efforts. Early results show notable improvement in the performance of each treated line section.

The basics of blink outage mitigation

To help reduce the frequency of blink outages, crews are installing four pieces of equipment:

A. New post-top insulators

Polymer post-top insulators are installed to replace the aging porcelain insulators. The post-top insulator is attached to the top phase wire at each structure, helping prevent the undesired flow of electricity to the ground.

B. Hanging lightning arresters

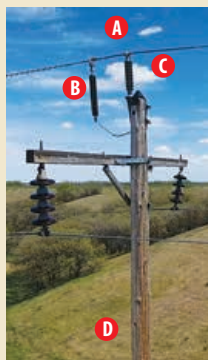
Hanging lightning arresters attach to the top phase wire and connect to the structure ground. This device routes a lightning strike around the electrical system and safely sends the current to ground.

C. Poletop helmet

A poletop helmet is a plastic cone-shaped device that deters birds and other animals from sitting on the structure, protecting them from the energized line.

D. Pole wrap

A pole wrap is a sheet of plastic that attaches around the base of the pole creating a slippery surface that deters wildlife from attempting to climb the pole.



Recipe Corner



Submit your recipes to be published in *Volts & Jolts*. Email to redlake@redlakeelectric.com or mail to: Red Lake Electric Cooperative, PO Box 430, Red Lake Falls, MN 56750.

Stuffed Zucchini Boats

6-8 medium zucchini or 12 small

1 pound ground beef

1 tablespoon olive oil

1/2 cup onion chopped

2 cloves garlic minced

1 cup marinara sauce

1 tablespoon Italian seasoning

1/4 teaspoon salt

1/4 teaspoon pepper

1 cup low-fat shredded cheddar or mozzarella cheese

Preheat oven to 375F. Slice zucchini in half, and carve them out with a spoon. Chop the zucchini 'meat' and set it aside. Line zucchini boats on a baking sheet lined with parchment paper or lightly greased with oil.

Heat olive oil in a nonstick skillet. Cook onion for 2-3 minutes or until it begins to golden. Add the garlic and cook for a few seconds. Add meat and cook until it's no longer pink, 3-5 minutes. Add the marinara sauce, zucchini pulp, Italian seasoning and salt and pepper. Simmer for 8-10 minutes.

Spoon mixture into zucchini boats and top each with a drizzle of cheese. Bake for 15-20 minutes or until the cheesy is fully melted and bubbly.

Annual pole inspection has started!

Red Lake Electric has contracted RAM Utilities to test poles within our service territory. They will be checking the north and west bays out of the Holt substation. This will include parts of Cedar, Como, East Valley, Holt, Huntly, Marsh Grove, Newfolden, New Maine, Spruce Valley and West Valley in Marshall County. RAM Utilities will use ATVs to travel from pole to pole. These vehicles will be equipped with RLEC signage to make them recognizable. If you have any questions concerning this pole inspection, please call the office at 800-245-6068.



Scholarship 2018

RECIPIENTS

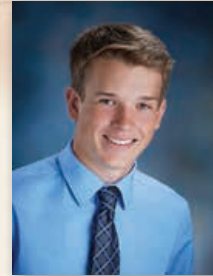
Each year, Red Lake Electric Cooperative provides scholarships for graduating seniors at the high schools operating throughout the Cooperative's service area. The recipients are selected by the scholarship selection committee of the recipients' high school. There were 22 recipients this year with each student receiving \$500. The funds for these scholarships come from unclaimed capital credits. Congratulations and best wishes to these scholarship recipients!



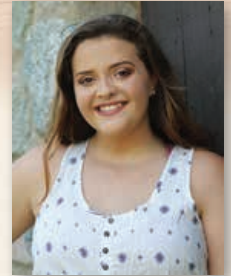
Paige Ballard
Lincoln High School
Kevin & Beth Ballard



Bailey Bradford
Crookston High School
Tom & Carol Bradford



Eric Buckley
Lincoln High School
Dennis & Kristin Buckley



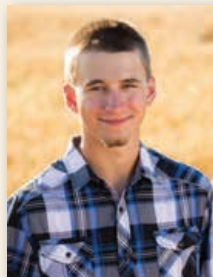
Emma Dagenais
Greenbush High School
Jason & Tara Erickson



Madison Derosier
Lafayette High School
Randy Derosier
& Sandy Derosier



Emma Duden
Lafayette High School,
Perry & Laurie Duden



David Dufault
Lafayette High School
Kevin & Heather Dufault



Faith Dvergsten
Lincoln High School
Gregory & Jill Dvergsten



Blake Glass
Win-E-Mac High School
Darin & Melanie Glass



Billie Jo Gryskiewicz
Red Lake County Central
Angela Klasen
& Ryan Gryskiewicz



Mariah Iverson
Lincoln High School
Justin & Desirae Iverson



Carlye Kiesow
Grygla-Gatzke High School
Coleen & Ron Kiesow



Hannah Kolstoe
Red Lake County Central
Matt & Lisa Kolstoe



Abigail Kraemer
Lincoln High School
Matthew & April Kraemer



Samantha Krohn
Marshall County Central
Ken Krohn



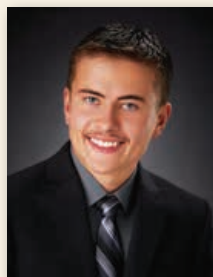
Dylan Manderud
Goodridge High School
Dale Manderud
& Misty Manderud



Keira Moen
Marshall County Central
Lance & Karlyn Moen



Marley Nelson
Lincoln High School
Timothy & Denise Nelson



Jordan Skibicki
Goodridge High School
Stanley & Patti Skibicki



Kathryn Szymanski
Lincoln High School
Timothy & Brenda
Szymanski



Kendra Thompson
Win-E-Mac High School
Patrick Thompson
& Cherie Thompson



Matthew Vettleson
Red Lake County Central
Alan & Christine Vettleson



Co-op members enlightened by power plant tour

On June 20 and 21, members of Red Lake Electric Cooperative and Clearwater-Polk Electric participated in a tour that included visiting Garrison Dam and the Milton R. Young Station.

The tour started with a stop at Minnkota Power Cooperative's headquarters in Grand Forks, ND. Tour participants heard from Mac McLennan, president and CEO of Minnkota Power Cooperative. They viewed the control center and were able to see the portable substation. Minnkota's control center staff monitors Minnkota's transmission lines and load levels throughout northwestern Minnesota and northeastern North Dakota. The transmission of signals for the control of off-peak electric heat is done from Minnkota Power's control center.

The second stop on the first day included a visit to Garrison Dam near Riverdale, N.D. Construction on the Garrison Project began in 1947 and was completed seven years later at the cost of approximately \$300 million. During the tour the participants viewed the generating units, penstocks, turbine and the

shaft. Garrison Dam has a generating capacity of 583 megawatts. Minnkota Power receives approximately 109 megawatts from Garrison Dam.

The final destination of the first day was Comfort Inn and Suites in Mandan, N.D. Tour participants were treated to a delicious evening banquet, courtesy of Minnkota Power. The evening program consisted of a power point presentation on the role Minnkota Power plays in the generation and transmission of electricity for Red Lake Electric, Clearwater-Polk Electric and nine other electric Cooperatives in NW Minnesota and NE North Dakota.

The second day of the trip included a tour of the Young Station. The station includes two coal-fired electric plants. Minnkota Power receives about 250,000 kilowatts from Young 1 and 355,000 kilowatts from Young 2.

The next segment of the tour included a visit to the open-pit lignite coal mines of BNI Coal. BNI has the contract to supply the lignite for the Young Station. Combined, the two electric generating plants consume over 4 million tons of lignite coal annually. BNI

has very large equipment that is used in the lignite mining process. Equipment used for stripping the overburden is called a dragline. BNI's largest dragline is named Liberty, which is equipped with a 77-cubic-yard bucket.

Mother Nature was very cooperative, allowing an excellent (5114005.01 Ebenezer Church) visit/tour of the open-pit lignite coal mines and Liberty.

Members of Red Lake Electric who participated in the tour were: Luke and Larae Kaushagan, Thief River Falls; Dean & Beverly Klegstad, Middle River; Darwin and Carol Eidelbes, Roger and Celeste Hoffman and Larry and Joan Foster, all of Goodridge; LeRoy and Dorothy Nelson, Thief River Falls; and John and Diana Stich, Kelli Brateng and Brayden Ste. Marie, all of Red Lake Falls.

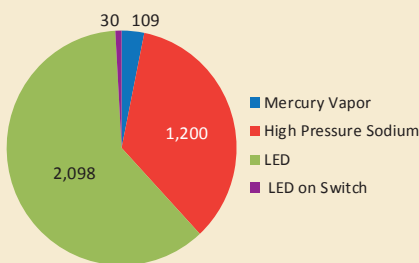
Being able to see the process firsthand gives participants a much better understanding and often a better appreciation of what is involved in the generation and transmission of electricity. It is a complex process to get energy from a coal field in southwestern North Dakota to an appliance in northwestern Minnesota.

QUICK TAKES

A look at some statistics
from your Red Lake
Electric Cooperative

Red Lake Electric Cooperative has outdoor security lighting available for just pennies a night. The most common lighting option operates automatically from dusk to dawn. A second option enables members (4409035.30 Michael Skjerven) to control lighting automatically or with a manual on/off switch; this option requires a one-time fee of \$150 to cover the switch and wiring costs. If you are looking to add security lighting or would like the option of a manual override switch, give Red Lake Electric Cooperative a call today, 1-800-245-6068 or 218-253-2168.

Red Lake Electric's Security Lights



NOTICE OF NAMES

Hidden within the text of the articles of this issue of the *Volts & Jolts* are the names and account numbers of some Red Lake Electric Cooperative members. They will appear within the articles in parentheses as such (9999999.99 Willie Ray Member). If you find your name and account number, clip it out and send it with your next payment. You will be credited with \$5 on your electric bill.

Operation Round Up® grant applications due Sept. 7

Organizations involved in community projects and charities are encouraged to apply for funds from Operation Round Up at this time. Completed grant applications are due in the Red Lake Electric Cooperative (RLEC) office by Friday, Sept. 7.



Operation Round Up is a program adopted by RLEC headquartered in Red Lake Falls. Members choosing to "round up" their monthly electric bill payment provide funds for this effort. Today, 96 percent of RLEC members now choose to contribute pennies each month to enhance their communities.

Funds will be donated primarily to nonprofit organizations to help fund specific projects or programs. Since the program began in 1993, \$525,000 has been granted to community organizations and charities. Money is donated for the betterment

of the community within the outside service area boundaries of RLEC.

The Red Lake Electric Trust board of directors determines grants. Board members are Julie Stennes, Thief River

Falls; Tishara Melcher, Middle River, Diane Kolstoe, Oklee; Stephanie Johnson, Gatzke and Bonnie Christians, Crookston.

To apply for Operation Round Up grants, organizations should contact the RLEC office in Red Lake Falls at 218-253-2168 or 800-245-6068. A short application must be completed and submitted along with a financial statement from the organization.

Grant application forms are available on the Cooperative's website: www.redlakeelectric.com.

For more information contact Stephanie Johnson, general manager of RLEC, at 218-253-2168 or 800-245-6068.

Move Over Bill receives the Governor's signature

The Move Over Bill passed both bodies of the legislature and was signed by the Governor on May 19.

Sen. Goggin, chief author on the Senate side, is an IBEW member and a great promoter of this legislation. Chair Davids was the chief author on the House side. Both Sen. Goggin and Rep. Davids are excellent supporters of electric cooperatives.

In 2015, Minnesota electric cooperatives promoted, and the legislature passed, legislation that expanded Minnesota's move over

law to include parked utility vehicles with their emergency or warning lights activated. This legislation applied to a highway having two lanes in the same direction.

The legislation this year adds to the statute streets or highways having only one lane in the same direction. The legislation requires that drivers slow down, maintaining a safe speed for traffic conditions, and operate the vehicle at a reduced speed until safely past the parked utility or emergency vehicle.

Safety is a priority for electric

cooperatives, who have employees working alongside roadways every day. Traffic is always an issue. This additional piece of legislation will further increase the safety of our line workers.

Thank you for your help getting this important piece of safety legislation over the finish line.





Cards of Thanks

Red Lake Electric reserves the right to edit thank you notes when being published.

Dear RLEC:

Thank you so much for the scholarship. I will use it toward my education at NCTC this fall.

Marley Nelson, Lincoln High School

Thank you for your generosity in awarding me a \$500 scholarship. Thanks for your kindness and well wishes on my next adventure at NDSU.

Paige Ballard, Lincoln High School

Thank you for the cooler and mug I won at the annual meeting.

Wayne Peterson

Thank you for your thoughtful and generous donation to the Win-E-Mac Junior Class After-Prom Party. It was a huge success and fun was had by all.

The Win-E-Mac Class of 2019

Thank you for the generous scholarship you awarded me. I'll use the scholarship to continue my education at the University of North Dakota.

Hannah Kolstoe, Red Lake County Central

I greatly appreciate your help in my future education. I'm honored to be selected and thankful for the opportunity to receive your scholarship.

*Samantha Krohn,
Marshall County Central*

Thank you for supporting my future plans by providing me the Red Lake Electric Cooperative Scholarship. I greatly appreciated your generosity.

Keira Moen, Marshall County Central

Thank you for awarding me as one of the recipients of the Red Lake Electric scholarships. I am very grateful for the opportunity this scholarship will provide for me. I will use it to help further my education.

Emma Duden, Lafayette High School

Thank you for choosing me as the recipient for your scholarship. I plan to use this to further my education at University of Minnesota Crookston to study animal science and ag-business. Thank you for your generosity.

*Matthew Vetteson,
Red Lake County Central*

Thank you for awarding me the Red Lake Electric Cooperative Scholarship. I plan to use this on my tuition next year at NDSU. I'm extremely grateful (9312001.06 Debra Needham) to receive the generous support.

Eric Buckley, Lincoln High School

Thank you so much for offering me one of your scholarships this year, I'm very excited to go to UMD next year. I would like to thank you again for helping me reach this goal and milestone in my life.

Faith Dvergsten, Lincoln High School

Thank you for the scholarship! I will be using the money toward continuing my education at MSUM. Thank you again for helping me with my college experience.

Mariah Iverson, Lincoln High School

Thank you for awarding me a scholarship; your generosity will help me pursue my goals and dreams. This will be used to further my education at North Dakota State University in agriculture.

Blake Glass, Win-E-Mac High School

Thank you for the opportunity to receive the generous gift of \$500 through the Red Lake Electric Cooperative scholarship. I was very pleased and appreciative to learn that I was selected as a recipient of your scholarship. I plan to use the money to defray cost of tuition when I attend Northland Community and Technical College this fall for nursing.

Madison Derosier, Lafayette High School

I am so honored that I was chosen to receive the Red Lake Electric Cooperative Scholarship. Thank you so much for your generosity. The money I receive from this scholarship will go directly toward the cost of attending college for eight years as I chase my dreams of becoming a dentist.

Abigail Kramer, Lincoln High School

Thank you for making this scholarship possible. I am grateful to you for your kind and generous support. This year I will be attending Minnesota State University Moorhead to pursue the continuance of my education in the fields of accounting and business management.

*Kendra Thompson,
Win-E-Mac High School*

I would like to thank you so much for the donation of \$300 that you have given to the 4-H Youth Development Program here in Red Lake County. This means so much to the 4-H members. It is a great incentive for them to work hard on their fair exhibits.

*Sharon Weiss, 4-H Program Coordinator,
Red Lake County*

Thank you so much for the enjoyable trip to the power plant, etc. The tour guides were knowledgeable, the fellow passengers were inquisitive, so all of us gained so much information about where our electrical power comes from. I'll never take for granted turning on a switch without thinking of people who work to make it all possible. Thanks again!

Darwin & Carol Eidelbes, Goodridge

Thank you for your donation to the RLCC Post Prom Party; your generosity is truly appreciated!

Thanks for making our 2018 Glow in the Dark After Prom Party a success! We appreciate your support to keep these kids safe.

*Marshall County Central After Prom
Committee & Attendees*

Thank you for donation to the Goodridge School Post Prom Party; it was greatly appreciated!

Thank you so much for coming to our school and teaching us about electrical safety! We really enjoyed the presentation; you are awesome! Thank you so much for taking the time to present to us, answer all our questions and share your truck. We loved it!

*Mrs. Gullingsrud's Kindergarten Class, J.A.
Hughes Elementary, Red Lake Falls*

I was both surprised and honored to receive this scholarship. Thank you so much. I'm aware of all the things you do, particularly in support of education. I plan on pursuing a career as an electrician (3832002.04 Brandon Page) and I will be attending Northland Community and Technical College in East Grand Forks.

Jordan Skibicki, Goodridge High School

We would like to extend our sincere appreciation for the monetary support that you gave our organization. It allowed us to attend the 2018 State FCCLA Conference in Bloomington in April.

Paula Miller, FCCLA Advisor and Lafayette High School FCCLA Members

Dear RLEC Trust:

Thank you so much for the donation. We appreciate your help in our Presentation Project! We couldn't do this without your support.

Pennington County Historical Society

Thank you so much for sponsoring our annual fundraising banquet in April. The evening was a huge success thanks to your assistance!

LCPC Staff

Thank you for your generous grant you gave us to provide the entry fee for 3½ to 5 year olds and their parents to the Headwater Science Center in Bemidji. We had a total of 40 participants from Red Lake County this year. There was a lot of hands-on learning experiences enjoyed by both young and old

*Margret Hamrum, RLCC ECFE
Plummer Site; Wanda Nelson, Red Lake Falls
ECFE; Joni Bjerklie, RLCC ECFE
Oklee Site and Head Start*



**Red Lake Electric
Cooperative Inc.**

New year. Great rebates.

Electric Heating Rebate Checklist

Must be on off-peak.



- ☐ **Electric plenum heaters**
Easily converts your existing fossil fuel furnace into a dual-fuel heating system. You are able to use the most efficient, cost-effective heating source – fossil fuel or electricity – at any time.

Rebate of \$50 per kilowatt (kW)

- ☐ **Electric thermal storage heaters**
Draws electricity during off-peak hours when it is cheaper. Heat is stored in specially designed bricks to provide comfort 24 hours a day.

Rebate of \$60 per kW

- ☐ **Air-source heat pumps
(including mini-split ductless option)**
Works just like a central air conditioner in the summer. In the fall and winter, they provide super-efficient supplemental heat.

**Up to 16 SEER: Rebate of \$300 per ton
17 SEER or greater: Rebate of \$500 per ton**

- ☐ **Geothermal heat pumps**
Provides the highest efficiency for space heating and cooling available today. The system transfers heat to and from the earth using only small amounts of electricity.

**Closed loop: Rebate of \$400 per ton
Open loop: Rebate of \$200 per ton**

- ☐ **Electric underfloor boiler**
A popular off-peak option because the system transfers consistently across the floor to reach people and objects, providing both comfort and efficiency. Applications include electric boiler with hydronic tubing.

Rebate of \$50 per kW

- ☐ **Other electric heating systems**
Options include electric baseboards, cove heaters, electric floor cable, mats and more.

Rebate of \$20 per kW

Electric Water Heater Rebate Checklist

Must be on off-peak



- ☐ 100 gallon or greater

\$350 rebate

- ☐ 56-99 gallon

\$300 rebate

- ☐ 55 gallon or less

\$150 rebate

- ☐ **Bonus rebates:**

Add \$250
if converting from
natural gas or
propane.

Add \$100
for
new building
construction.

Electric Vehicle Charger Rebate Checklist – 240V Level 2 Charger

Must be on off-peak



Residential
Charger



Commercial
Charger

- ☐ Electric vehicle (EV)

\$50 rebate

- ☐ Residential – Electric golf carts, ATVs, lawn mowers, etc.

\$50 rebate

- ☐ Commercial – Forklifts, Zambonis, etc.

\$50 rebate

**All equipment must be new and installed
on Red Lake Electric Cooperative's system.**

Equipment must be installed on RLEC's off-peak program.

Contact Member Services for more details!

218-253-2168