



NOVEMBER 2018

Volts & Jolts

Published monthly for the members of Red Lake Electric Cooperative, Inc.

One of the Minnkota Power Systems

SERVING THE FOUR-COUNTY AREA OF MARSHALL, PENNINGTON, RED LAKE AND POLK
and a portion of the lands of the Red Lake Band of Chippewa



Logo Contest

\$250 Cash Prize!

Let's start the New Year with a new logo; help us design it! Our current logo consists of the National Rural Electric Cooperative Association's "green ball" symbol and is used by a number electrical cooperatives across the United States. We think it's time for our own look!

**Deadline for submitting design
is Friday, Nov. 30, 2018.**



**Red Lake Electric
Cooperative, Inc.**

Basic Rules*

- Must be a member of Red Lake Electric (or a minor in the home of a member).
- One submission per person (no groups), and it must be your own artwork.
- By being chosen as the winning entry, you understand that your artwork becomes the property of Red Lake Electric Cooperative, Inc.
- Logo will be chosen by a committee of cooperative employees.
- All judging decisions are final.

**For a complete list of rules and an application, please visit our website or stop by the office.*

HAPPY
Thanksgiving

FROM ALL OF US AT
RED LAKE ELECTRIC COOPERATIVE

As we gather with our families and friends for Thanksgiving, it is fitting we reflect on the many blessings for which we can be thankful. We all experience misfortunes, but they are few compared with the blessings bestowed on us.



**Closed
Thanksgiving Day**

**Red Lake Electric
Cooperative will be closed
Thursday, Nov. 22
for Thanksgiving**

In case of an electrical outage or emergency, call the after-hours phone number, 218-253-2200.



NOVEMBER 2018 – Vol. 54, No. 2

OFFICIAL PUBLICATION OF

Red Lake Electric Cooperative, Inc.

P.O. Box 430 • 412 International Drive S.W.

Red Lake Falls, MN 56750-0430

(USPS 663-400)

Subscription rate: \$2.50 per year

This institution is an equal opportunity provider and employer.

Published 10 times a year, January through May, July and September through December, by the Red Lake Electric Cooperative, Inc., in the interest of its members and others. Periodical postage paid at the U.S. Post Office in Red Lake Falls, Minnesota 56750. POSTMASTER, SEND ADDRESS CHANGES to Volts & Jolts, c/o Red Lake Electric Cooperative, Inc., P.O. Box 430, Red Lake Falls, Minnesota 56750-0430. Email: info@redlakeelectric.com.

OFFICERS AND DIRECTORS

President Randy Versdahl
Vice President Stacy Blawat
Secretary-Treasurer Mark Hanson
Directors Cecil Anderson,
Aaron Chervestad, Bonnie Christians,
Colette Kujava, Steve Linder, Peter Mosbeck

Stephanie Johnson General Manager
Shirley Bregier Manager of Finance
& Administration
Steve Conely Manager of Electric
System Operations
Kelli Brateng Manager of Member Services

OFFICE HOURS

Monday-Friday
8 a.m. – 4:30 p.m.

Phone: (218) 253-2168
Toll-Free: 1-800-245-6068
Fax: (218) 253-2630



AFTER HOURS/OUTAGE CALLS 218-253-2200

Website: www.redlakeelectric.com
Email: info@redlakeelectric.com

CALL BEFORE YOU DIG 1-800-252-1166 or 811

MINNESOTA STATE ELECTRICAL INSPECTORS

Northwest corner of Polk and western Marshall Counties:
Wayne Bergstrom – 701-520-9771

Pennington and eastern Marshall Counties:
Bryan Holmes – 218-686-1413

Red Lake and most of Polk Counties:
George Stage – 701-306-3511

Any time you or an electrician does wiring or other electrical work at your home or farm, Minnesota state law requires a state wiring inspector to conduct a proper inspection of the work. A rough-in inspection must be made before any wiring is covered. A final inspection is also required. Please visit www.dli.mn.gov for more information. The inspectors can be reached weekday mornings between 7:00 a.m. and 8:30 a.m.

OUR MISSION STATEMENT

It is the mission of Red Lake Electric Cooperative to enhance the quality of life for people of our service area by safely and consistently providing quality electric service and other valued services while holding our employees, our community and our environment in high regard.



Manager's Comments

by Stephanie Johnson



We're thankful for your membership

I'd like to take this opportunity to express my gratitude for your membership in our electric cooperative. Because of your connection to Red Lake Electric Cooperative, we are able to make our community a better place.

During this season of giving thanks, I think it is important to let you and other consumer-members of Red Lake Electric Cooperative know just what an impact you have on our co-op and the greater community, likely in ways you may not even realize.

As part of the cooperative business model, one of our core principles is "Concern for Community." While our priority is always to provide safe, reliable and affordable energy, we view our role in the community as a catalyst for good.

When you attend co-op events, alert us to problems, provide suggestions online or to our employees, you help us (3724004.02 Douglas Barth) improve operations and thereby better serve the larger co-op membership.

Because we are locally governed by members of our community, we are able to get a first-hand perspective on community priorities, thereby enabling us to make more informed decisions on long-term investments, such as converting to a new billing software system and the installation of new automated meters.

We are thankful that our co-op board members carve out time to attend important training sessions, participate in planning meetings and keep abreast of industry trends. This investment in time results in better-informed advisors that serve the co-op's interests in a way that our consumer-members expect and deserve.

We appreciate the countless acts of kindness our lineworkers and other employees receive when they are working in severe weather and dangerous conditions. Our employees are thankful for your patience and consideration when we are trying to restore power during challenging situations and prolonged periods.

Red Lake Electric is a reflection of our local community and its evolving needs. Together, let's continue making our corner of the world a better place. We can't do it without you, and for that, we're thankful for your membership.

Customer appreciation lunch

Our first annual Customer Appreciation Lunch was held Oct. 10. Considering the weather and that is was our first go at an appreciation lunch, I felt we had a good turnout and everything seemed to go smoothly. I enjoyed meeting and visiting with the people of this great community. Thank you to all who came during that stormy day! If you were unable to make it this year, Red Lake Electric does plan to do this again next year. We'll keep our fingers crossed that the weather will be more cooperative.

New logo

Remember, Red Lake Electric is holding a New Logo Contest and is asking for your creative help! Our current logo is the National Rural Electric Cooperative Association's "green ball" symbol and is used by other cooperatives across the United States. We believe is time for our own look! If you have any questions, please feel free to contact our office. So, get your creative juices flowing. We are excited to see the creative ideas of our community.



Report from the Office

by Shirley Bregier



Sales tax exemption

With the start of the heating season, I want to remind you that residential electric heat during the winter months, as well as electricity used in agricultural production, are exempt from Minnesota sales tax. If you currently have a sales tax exemption form on file with RLEC, you do not need to send us another; however, if you haven't given us a sales tax exemption form, please do so. You will find an exemption form in this issue of *Volts & Jolts*, on our website or give us a call and we will send you one.

Off-peak meters

Most meters recording off-peak heat usage sit idle all summer. When the electric heat is turned back on, some of the automated meter reading devices (Turtles) don't always start reporting (6628003.01 Yvonne Basinger) kWh usage. We try to detect these; however, if you are using your off-peak heating system, we ask that you look at your electric bill to be sure

you are getting the discounted rate for off-peak usage.

New meters

As we have reported in earlier issues of *Volts & Jolts*, RLEC is changing our metering system. We currently have about 20 percent of our 7,500 meters changed to the new system. If you have an off-peak meter located inside your home or other buildings, when our crew leaves a note please call to make arrangements on changing the meter. In order to continue to get your off-peak rate, your meter will need to be replaced.

Holiday wishes

This is the time of year I am reminded to take the time to count my blessings, one of which is the opportunity to serve you. I give my thanks to the many men and women who have fought to keep our freedom, and I wish each of you a wonderful holiday season.

Until next time, stay safe.

Recipe Corner



Submit your recipes to be published in *Volts & Jolts*. Email to redlake@redlakeelectric.com or mail to: Red Lake Electric Cooperative, PO Box 430, Red Lake Falls, MN 56750.

Pecan Pie Bars

Shortbread Crust

2 c. all-purpose flour
1/3 c sugar
1/4 tsp salt
3/4 c. cold butter cubed

Filling

4 eggs
1 c. corn syrup
1 1/2 c. sugar
3 T butter melted
1 1/2 tsp. vanilla extract
2 1/2 c. chopped pecans

Mix flour, sugar and salt in a large bowl. Cut in cold butter to create coarse crumbs. Press onto the bottom of a greased 9x13 baking pan and bake at 350 for 20 minutes.

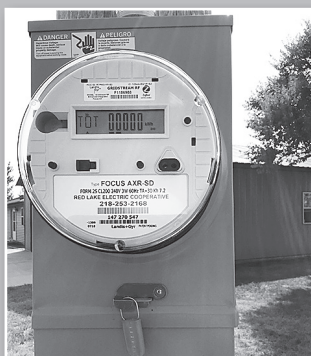
Meanwhile, whisk eggs, corn syrup, sugar, melted butter and vanilla in a large bowl. Stir in pecans. Spread over the hot crust as soon as it comes out of the oven.

Bake for an additional 25-30 minutes, until filling has set. Cool completely before serving.

AMI update

Red Lake Electric Cooperative (RLEC) is deploying a new Automated Metering Information (AMI) system across its service territory. RLEC employees will be visiting the member's properties to upgrade their meters.

If your residence has an off-peak meter and you are not home at the time of the meter upgrade, your main meter will be upgraded and a door hanger will be left. The door hanger will kindly ask you to contact the office to set up an appointment for us to change out your off-peak meter. Meter changeouts will only be completed during our normal business hours. Should you have any questions, please don't hesitate to ask.



Phone: 218-253-2168

Email info@redlakeelectric.com



Through the Infinity Renewable Energy program, you can decide how much of the electricity you purchase is generated by renewable resources.

Contact RLEC today to learn more about how you can participate in the program.

EPA releases new carbon regulation proposal

Minnkota Power Cooperative, Red Lake Electric Cooperative's wholesale power provider, is studying a proposal from the Environmental Protection Agency to replace the Clean Power Plan with a new rule governing carbon dioxide emissions from existing coal-based facilities.

The Affordable Clean Energy (ACE) rule, released Aug. 21, appears to be a step in the right direction because it provides states with the latitude to implement plans focused on each individual power plant within their borders. Under the proposal, states would set a unit's performance standard by determining the Best System of Emission Reduction from a list of seven candidate technologies identified by EPA. The technologies focus on efficiency upgrades known as heat-rate improvements.

"It is encouraging to see EPA propose a rule that recognizes coal facilities across the United States cannot be regulated using a one-size-fits-all approach," said Craig Bleth, Minnkota environmental manager. "By looking at these facilities on an individual basis, EPA is empowering states to factor in unique fuel types, operating

characteristics and other important circumstances when determining the best method of achieving emissions reductions."

The ACE rule also proposes to modify EPA's New Source Review program to streamline the process for plants to make (3128001.02 William Cullen) efficiency improvements without having to go through a prolonged and costly permitting process.

EPA indicates that CO₂ emissions will be approximately 34 percent below 2005 levels upon full implementation of the ACE rule, which is consistent with expected reductions under the Clean Power Plan. Although it was finalized in 2015, the Clean Power Plan was never implemented due to a Supreme Court stay pursued by Minnkota and other electric cooperatives. The rule's stringent targets and aggressive timelines would have likely forced North Dakota utilities into costly, irreversible and irrevocable decisions on the future operation of their coal-based facilities.

The ACE rule will undoubtedly face its own legal,

technical and political challenges. Minnkota will continue to work closely with its industry partners to formulate comments on the rule.

Minnkota monitors CO₂ regulatory changes because a significant portion of its energy is generated at the Milton R. Young Station, a coal-based facility located 35 miles from Bismarck, N.D. About \$425 million has already been invested into the emission control technologies at the Young Station.

Changes in the path toward CO₂ regulation have not affected Minnkota's efforts to evaluate Project Tundra, which aims to equip Unit 2 at the Young Station with technology that could capture up to 90 percent of its CO₂ emissions. The CO₂ would then be used for enhanced oil recovery (EOR) or safe, permanent, geologic storage. Much of the initial project design, engineering, testing and economic analysis is being conducted in 2018.

"We continue to support a regulatory framework that empowers energy innovation," Bleth said.





Fuel prices could affect load control

Slightly higher wholesale market prices, in particular propane, entering the heating season could impact the number of load control hours for Red Lake Electric Cooperative off-peak members in winter 2018-19. Minnkota is Red Lake Electric Cooperative's wholesale power supplier.

"As those prices go up, the market follows those trends, and you see more control," said Todd Sailer, Minnkota Power Cooperative senior manager of power supply and re-source planning.

Sailer said Minnkota estimates (4415001.03 Richard D. Haugen) 200 to 250 hours of dual-heat load control this winter. This compares to the 10-year average of 170 hours.

Last year's total of 60 control hours shows that moderate temperatures and low market conditions can combine to result in a small amount of control hours.

Other than the natural gas and propane prices inching up, Minnkota's demand response outlook is similar to the 2017-18 forecast. The unknown is possible forced outages at Minnkota and elsewhere in the wholesale energy market.

"Market price volatility is driven by fuel prices, weather and generator outages. These events drive the majority of the control hours," Sailer said.

Minnkota has the ability to control up to 350 megawatts through its demand response system. This in-

cludes dual-fuel systems, temporarily controlling storage heating systems, large-capacity water heaters, home vehicle chargers and large industrial consumers with backup generators. Millions of dollars have been saved due to the successful operation of Minnkota's load management system for about 40 years.

Two outages could have an impact on the number of load control hours. Unit 1 of the Milton R. Young Station is offline until early November after a major outage was extended for damage discovered during the outage. Also, Coyote Station has an outage scheduled to begin March 29 and last into May.

"Any time you have a generator out, you're exposed more to the market," Sailer said. "Right now we have some scheduled outages for the first part of November and then again in the spring. We typically do not schedule maintenance in the January and February time frame when we're at peak conditions. That's where the unplanned or forced outages come into play."

During outages and periods of peak electric demand, Minnkota's first option is to purchase energy from the power market. If the timing is not right and affordable power is not available, off-peak loads are temporarily controlled. The savings are passed on to retail consumers through the lower off-peak heating rate.

"Controlling load during these

periods protects consumers from the volatility of the market and prevents the need to build new power plants just to serve peak loads," Sailer said.

An off-peak system consists of an electric heating source as its primary component. A supplemental heating source must operate several hundred hours or more during the winter season. Sailer said members with a well-maintained backup heating system should not notice a difference in comfort level when their off-peak heating system is controlled.

Incentives for heating, charging equipment

As part of its Value of Electricity campaign, Minnkota works with its member cooperatives and participating municipalities to offer incentives for the installation of electric heating, water heating and charging equipment.

A recent addition is incentives for the installation of electric vehicle charging equipment on the off-peak program. It calls for a \$50 per kilowatt rebate (5921004.01 Michael J. Seeger) for Level 2 chargers that are 240 volts. The maximum rebate is \$500.

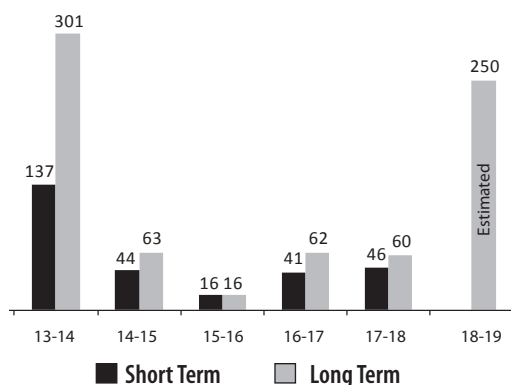
"One of the things that is new to our program that we're really promoting is the electrical vehicles," Sailer said. "We see it as a benefit for the consumer and the co-ops. It's just another good load in our demand response program."

QUICK TAKES

A look at some statistics from your
Red Lake Electric Cooperative

The chart below shows the amount of control time estimated for Red Lake Electric Cooperative's off-peak customers this heating season and a comparison of the seasonal control over (7204001.03 Craig A. Hoiseth) the past five years. Off-peak control hours are impacted in a number of ways including weather, variable energy output from Minnkota's wind energy resources and energy availability in the wholesale energy market.

Off-Peak Control Hours



NOTICE OF NAMES

Hidden within the text of the articles of this issue of the *Volts & Jolts* are the names and account numbers of some Red Lake Electric Cooperative members. They will appear within the articles in parentheses as such (9999999.99 Willie Ray Member). If you find your name and account number, clip it out and send it with your next payment. You will be credited with \$5 on your electric bill.



Energy Efficiency Tip of the Month

Heading out of town for the holidays? Remember to unplug electronics that draw a phantom energy load. Some gadgets like TVs, gaming consoles, chargers and DVD players use energy when plugged into an outlet, even when they're not in use.

Source: energy.gov



Like us on Facebook at
www.facebook.com/redlakeelectric

Don't want to write a check? Want to save on postage?



Red Lake Electric has a new payment option to make paying your bill easy. This service is free. Sign-up is simple. Go to www.redlakeelectric.com and click on the Bill4U icon. There is now an app for your smartphone. Just go to your app store and download the free app. Bill4U allows you to:

- Make your payments 24 hours a day directly from your checking or savings account, eliminating the cost of the check and postage.
- Access your billing statements at any time.
- View and compare your kilowatt-hour usage.

If you have any questions or need more information, visit our website or call Red Lake Electric at 800-245-6068.

Electrical safety and conservation websites

The following is a list of websites that can provide information and education in reference to electrical safety and energy conservation. These websites are listed (4223003.01 Thomas Scholin) as links on Red Lake Electric's website at www.redlakeelectric.com.

- Electrical Safety Foundation International: www.esfi.org
- Alliance to Save Energy: www.ase.org
- U.S. Environmental Protection Agency: www.epa.gov/greenhomes
- Energy Star: www.energystar.gov
- Minnesota Safety Council: www.minnesotasafetycouncil.org
- Safe Electricity: www.safeelectricity.org
- Lighting Controls Association: www.aboutlightingcontrols.org
- U.S. Consumer Product Safety Commission: www.cpsc.gov



ELECTRIC HEAT EXEMPTION

This is to certify that the primary source of heat for my residence is electricity and I am eligible for the electric heating sales tax exemption as provided by Minnesota State Law. The primary source is the source that supplies more heat than any other source for the largest period of time during the heating season.

Date _____ Account Number _____

Social Security Number _____

Signature _____

Cards of Thanks

Red Lake Electric reserves the right to edit thank you notes when being published.



Thank you for the member appreciation lunch, great lunch and chance to see the electric Chevy Bolt. Also thank you for the door prize, the electric grill.

James F. Nelson, Thief River Falls

Thank you for the energy credit I won at the member appreciation lunch. Lunch was very good and we learned a lot about the electric car.

Diane Torblaa, Thief River Falls

Thank you for the energy credit at the appreciation lunch. Very nice lunch and gift.

Warren Hermreck, Thief River Falls

Dear RLEC Trust,

On behalf of Middle River-Thief Lake Living at Home program, I would like to thank you for your generosity regarding the \$500 grant. The monies will help us with paying mileage for medical transportation.

Cindy Kilen, Program Director

It is only with supporters like you that we are able to continue to serve the town of Viking and townships of Viking and New Solum. We have been able to upgrade our vehicles and improve our equipment thanks to the support of the community.

Viking Fire & Rescue

On behalf of the Plummer Fire Department, I would like to thank you for awarding us an Operation Round Up grant in the amount of \$1,500. This grant will be used to provide handheld radios to new firefighters in our department. Communication is crucial in any emergency situation and this grant will provide us with means for improved communication within our department and surrounding agencies.

Wade Westlake, Fire Chief

We, LSS Senior Nutrition Program, recently received your donation in the amount of \$1,000 in support of the Senior Nutrition Program in the Red Lake Falls area. Thank you for your contribution. This gift will help us as we continue our program in your area.

Kristen Schurrer, Senior Director – Senior Nutrition

Thank you so much for the recent Operation Round Up grant you awarded us, which will benefit the Marshall County Christmas projects. Your gift is appreciated and will be used to help fund the Christmas Sharing Tree and the Food Basket projects. These projects provide food for the elderly and toys, clothes, winter gloves and quilts for children in need during the Christmas season.

Stacey Urbaniak, Marshall County Social Services Case Aide

Thank you for your 2018 Fall Operation Round Up grant of \$1,000. This past year we served over 500 individuals, children, women and men with our victim advocacy, shelter, (5224002.10 Teresa Lund) housing and parenting time center programs. We are glad we can provide a safe place to live or to receive services.

Sanrda Bentley, Executive Director, Violence Intervention Project

Are you ready for winter?

Snow and ice are inevitable when dealing with winter storms, but being prepared can make a world of difference.

Winterize your home

Winter storms wreak havoc on your home. By winterizing your living space, you'll be prepared for extreme cold and hazardous conditions.

- Remember to maintain and inspect heating equipment and chimneys every year to ensure they're working safely and properly.
- Caulk and weatherstrip doors and windows to make the most of your heating system.
- Freezing temperatures often cause water pipes to burst. Remember to insulate pipes with insulation or newspapers and plastic. Allow faucets to drip during extreme cold to avoid frozen pipes.
- Consider installing storm windows for better insulation. You can also cover windows with plastic (from the inside) to keep the cold out.
- Make sure everyone in your family knows where the home's fire extinguisher is located and how to use it properly. House fires occur more frequently during winter months, as people tend to use alternative heating methods that may not be safe.

Prepare a winter survival kit

Severe winter storms often bring heavy accumulation of ice and snow, which can lead to downed power lines and extended outages. Red Lake Electric Cooperative crews (4617001.03 Bettie M. Mickelson) will work hard to restore power, but having a winter survival kit on hand is a smart idea.

- **Food:** Store food that does not require cooking, such as canned goods, crackers, dehydrated meats and dried fruit. Keep a large supply of water on hand. **Ready.gov** recommends five gallons per person.
- **Medication:** Be sure to refill all prescriptions in the event of a major power outage.
- **Identification:** Keep all forms of identification handy, such as driver's licenses, photo IDs and social security cards. Bank account information and insurance policies are also good to have on hand.
- **Other items:** First aid kit, blankets, flashlight, battery-powered radio and extra batteries.

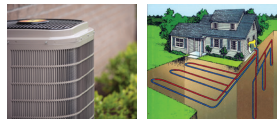


**Red Lake Electric
Cooperative, Inc.**

New year. Great rebates.

Electric Heating Rebate Checklist

Must be on off-peak.



☐ **Electric plenum heaters**

Easily converts your existing fossil fuel furnace into a dual-fuel heating system. You are able to use the most efficient, cost-effective heating source – fossil fuel or electricity – at any time.

Rebate of \$50 per kilowatt (kW)

☐ **Electric thermal storage heaters**

Draws electricity during off-peak hours when it is cheaper. Heat is stored in specially designed bricks to provide comfort 24 hours a day.

Rebate of \$60 per kW

☐ **Air-source heat pumps (including mini-split ductless option)**

Works just like a central air conditioner in the summer. In the fall and winter, they provide super-efficient supplemental heat.

**Up to 16 SEER: Rebate of \$300 per ton
17 SEER or greater: Rebate of \$500 per ton**

☐ **Geothermal heat pumps**

Provides the highest efficiency for space heating and cooling available today. The system transfers heat to and from the earth using only small amounts of electricity.

**Closed loop: Rebate of \$400 per ton
Open loop: Rebate of \$200 per ton**

☐ **Electric underfloor boiler**

A popular off-peak option because the system transfers consistently across the floor to reach people and objects, providing both comfort and efficiency. Applications (6624003.03 Jamie Wishard) include electric boiler with hydronic tubing.

Rebate of \$50 per kW

☐ **Other electric heating systems**

Options include electric baseboards, cove heaters, electric floor cable, mats and more.

Rebate of \$20 per kW

Electric Water Heater Rebate Checklist

Must be on off-peak



☐ 100 gallon or greater

\$350 rebate

☐ 56-99 gallon

\$300 rebate

☐ 55 gallon or less

\$150 rebate

☐ **Bonus rebates:**

Add \$250
if converting from
natural gas or
propane.
Add \$100 for
new building
construction.

Electric Vehicle Charger Rebate Checklist – 240V Level 2 Charger

Must be on off-peak



Residential
Charger Commercial
Charger

☐ Electric vehicle (EV)

\$50 rebate

☐ Residential – Electric golf carts, ATVs, lawn mowers, etc.

\$50 rebate

☐ Commercial – Forklifts, Zambonis, etc.

\$50 rebate

**All equipment must be new and installed
on Red Lake Electric Cooperative's system.**

Equipment must be installed on RLEC's off-peak program.

Contact Member Services for more details!

218-253-2168